
OXY GRAND JUNCTION EBUSINESS

**Cascade Creek 697-09-50A
GRAND VALLEY
Garfield County , Colorado**

Cement Surface Casing
10-Sep-2010

Job Site Documents

The Road to Excellence Starts with Safety

Sold To #: 344034	Ship To #: 2806428	Quote #:	Sales Order #: 7622901
Customer: OXY GRAND JUNCTION EBUSINESS	Customer Rep: Silva, Marco		
Well Name: Cascade Creek	Well #: 697-09-50A	API/UWI #:	
Field: GRAND VALLEY	City (SAP): PARACHUTE	County/Parish: Garfield	State: Colorado
Contractor: H&P Drilling	Rig/Platform Name/Num: H&P 330		
Job Purpose: Cement Surface Casing			
Well Type: Development Well	Job Type: Cement Surface Casing		
Sales Person: DUNNING, DUSTIN	Srv Supervisor: HONE, AARON	MBU ID Emp #:	381285

Job Personnel

HES Emp Name	Exp Hrs	Emp #	HES Emp Name	Exp Hrs	Emp #	HES Emp Name	Exp Hrs	Emp #
BORSZICH, STEPHEN A	15	412388	GAMBLE, BENJAMIN T	15	446666	HONE, AARON D	15	381285
MAGERS, MICHAEL Gerard	15	339439	SIMINEO, JEROD M	15	479954	WEAVER, CARLTON Russell	15	457698

Equipment

HES Unit #	Distance-1 way	HES Unit #	Distance-1 way	HES Unit #	Distance-1 way	HES Unit #	Distance-1 way
10744648C	120 mile	10822535	120 mile	10856450	120 mile	10856464	120 mile
10867322	120 mile	10867423	120 mile	10897887	120 mile	10998508	120 mile
10998512	120 mile	11259886	120 mile				

Job Hours

Date	On Location Hours	Operating Hours	Date	On Location Hours	Operating Hours	Date	On Location Hours	Operating Hours
9/10/10	15	11						

TOTAL Total is the sum of each column separately

Job

Job Times

Formation Name	Formation Depth (MD)	Top	Bottom	Called Out	Date	Time	Time Zone
Form Type			BHST	On Location	10 - Sep - 2010	06:00	MST
Job depth MD	2710. ft		Job Depth TVD	Job Started	10 - Sep - 2010	12:42	MST
Water Depth			Wk Ht Above Floor	Job Completed	10 - Sep - 2010	18:59	MST
Perforation Depth (MD)	From		To	Departed Loc	10 - Sep - 2010	21:00	MST

Well Data

Description	New / Used	Max pressure psig	Size in	ID in	Weight lbm/ft	Thread	Grade	Top MD ft	Bottom MD ft	Top TVD ft	Bottom TVD ft
-------------	------------	-------------------	---------	-------	---------------	--------	-------	-----------	--------------	------------	---------------

Sales/Rental/3rd Party (HES)

Description	Qty	Qty uom	Depth	Supplier
PLUG,CMTG, TOP, 9 5/8, HWE, 8.16 MIN/9.06 MA	1	EA		
R/A DENSOMETER W/CHART RECORDER, /JOB, ZI	1	JOB		
PORT. DATA ACQUIS. W/OPTICEM RT W/HES	1	EA		
ADC (AUTO DENSITY CTRL) SYS, /JOB, ZI	1	JOB		

Tools and Accessories

Type	Size	Qty	Make	Depth	Type	Size	Qty	Make	Depth	Type	Size	Qty	Make
Guide Shoe					Packer					Top Plug	9.625	1	
Float Shoe					Bridge Plug					Bottom Plug			
Float Collar					Retainer					SSR plug set			
Insert Float										Plug Container	9.625	1	
Stage Tool										Centralizers			

Miscellaneous Materials

Gelling Agt	Conc	Surfactant	Conc	Acid Type	Qty	Conc	%
Treatment Fld	Conc	Inhibitor	Conc	Sand Type	Size	Qty	

Fluid Data									
Stage/Plug #: 1									
Fluid #	Stage Type	Fluid Name	Qty	Qty uom	Mixing Density lbm/gal	Yield ft ³ /sk	Mix Fluid Gal/sk	Rate bbl/min	Total Mix Fluid Gal/sk
1	Water Spacer		20.00	bbl	8.33	.0	.0	.0	
2	Super Flush 101	SUPER FLUSH 101 - SBM (12199)	20.00	bbl	10.	.0	.0	.0	
3	Water Spacer		20.00	bbl	.	.0	.0	.0	
4	VersaCem Lead Cement	VERSACEM (TM) SYSTEM (452010)	1060.0	sacks	12.3	2.33	12.62		12.62
	12.62 Gal	FRESH WATER							
5	VersaCem Tail Cement	VERSACEM (TM) SYSTEM (452010)	160.0	sacks	12.8	2.07	10.67		10.67
	10.67 Gal	FRESH WATER							
6	Displacement		205.3	bbl	.	.0	.0	.0	
7	Topout Cement	HALCEM (TM) SYSTEM (452986)	15.0	sacks	12.5	1.97	10.96		10.96
	10.96 Gal	FRESH WATER							
Calculated Values		Pressures		Volumes					
Displacement	5	Shut In: Instant		Lost Returns	YES	Cement Slurry		Pad	
Top Of Cement	SURFACE	5 Min		Cement Returns	123	Actual Displacement		Treatment	
Frac Gradient		15 Min		Spacers	80	Load and Breakdown		Total Job	
Rates									
Circulating	7	Mixing		5	Displacement		5	Avg. Job	5
Cement Left In Pipe	Amount	53.92 ft	Reason	Shoe Joint					
Frac Ring # 1 @	ID	Frac ring # 2 @	ID	Frac Ring # 3 @	ID	Frac Ring # 4 @	ID		
The Information Stated Herein Is Correct				Customer Representative Signature					

The Road to Excellence Starts with Safety

Sold To #: 344034		Ship To #: 2806428		Quote #:		Sales Order #: 7622901	
Customer: OXY GRAND JUNCTION EBUSINESS				Customer Rep: Silva, Marco			
Well Name: Cascade Creek			Well #: 697-09-50A		API/UWI #:		
Field: GRAND VALLEY		City (SAP): PARACHUTE		County/Parish: Garfield		State: Colorado	
Legal Description:							
Lat: N 0 deg. OR N 0 deg. 0 min. 0 secs.				Long: E 0 deg. OR E 0 deg. 0 min. 0 secs.			
Contractor: H&P Drilling			Rig/Platform Name/Num: H&P 330				
Job Purpose: Cement Surface Casing					Ticket Amount:		
Well Type: Development Well			Job Type: Cement Surface Casing				
Sales Person: DUNNING, DUSTIN			Srvc Supervisor: HONE, AARON			MBU ID Emp #: 381285	

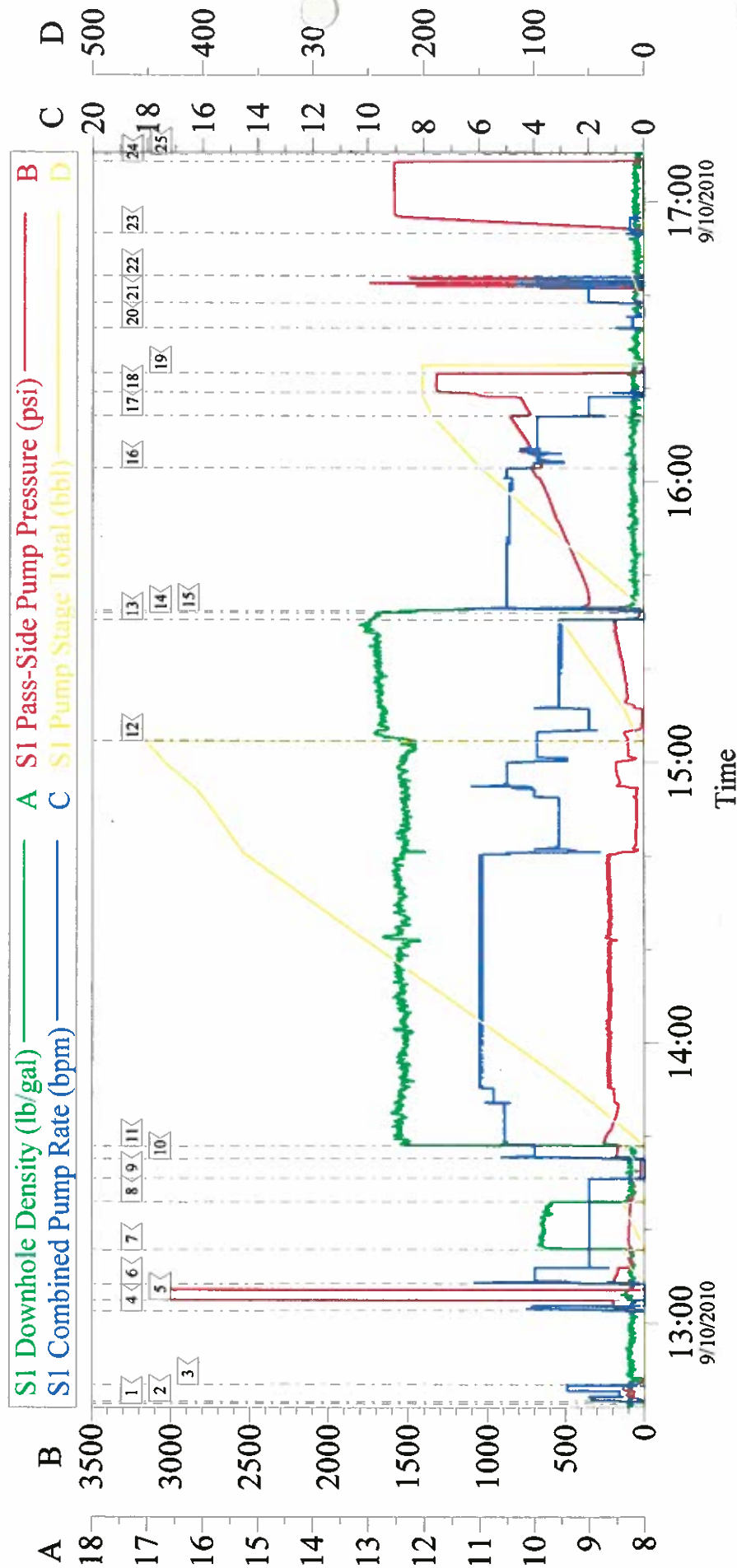
Activity Description	Date/Time	Cht #	Rate bbl/ min	Volume bbl		Pressure psig		Comments
				Stage	Total	Tubing	Casing	
Call Out	09/10/2010 01:30							
Pre-Convoy Safety Meeting	09/10/2010 03:20							
Crew Leave Yard	09/10/2010 03:30							
Arrive At Loc	09/10/2010 06:00							SF TRUCK ON LOCATION
Assessment Of Location Safety Meeting	09/10/2010 06:10							WIRELINE AND FRAC ON LOCATION. RIG RUNNING CASING.
Pre-Rig Up Safety Meeting	09/10/2010 06:20							
Rig-Up Equipment	09/10/2010 06:30							
Pre-Job Safety Meeting	09/10/2010 12:20							
Start Job	09/10/2010 12:42							HOLE- 14 3/4" TD- 2730', CASING- 9 5/8" 36# J-55 TP- 2710' SJ- 53.92' PARASITE- 2519' MUD- 9.2#
Prime Pumps	09/10/2010 12:43		3	6			110.0	FILL LINES TO FLOOR.
Shutdown	09/10/2010 12:46							COLLAR ON CASING HAD DENTS IN IT. HEAD WOULDN'T SEEL. FIXED COLLAR.
Prime Pumps	09/10/2010 13:02		4	3			197.0	HEAD SEALED, PROBLEM FIXED.
Test Lines	09/10/2010 13:04							3090 PSI.
Pump Spacer	09/10/2010 13:08		4	20			160.0	FRESH WATER.

Activity Description	Date/Time	Cht #	Rate bbl/min	Volume bbl		Pressure psig		Comments
				Stage	Total	Tubing	Casing	
Pump Spacer	09/10/2010 13:15		2	20			87.0	SUPERFLUSH
Pump Spacer	09/10/2010 13:25		2	10			85.0	FRESH WATER
Shutdown	09/10/2010 13:30							CELLAR PUMP COULDN'T KEEP UP. HAD TO SHUT DOWN PER CUSTOMERS REQUEST TO CATCH UP.
Resume	09/10/2010 13:35		4	10			180.0	FINISHED PUMPING LAST WATER SPACER.
Pump Lead Cement	09/10/2010 13:37		6	440			232.0	VERSACEM- 1060 SKS, 12.3, 2.33, 12.62 105 LBS. TUFF FIBER. LOST RETURNS 60 BBLs. AWAY. RETURNED AT 350 BBLs. AWAY.
Pump Tail Cement	09/10/2010 15:04		3	59			125.0	VERSACEM- 160 SKS, 12.8, 2.11, 10.67
Shutdown	09/10/2010 15:30							HAD TROUBLE WITH CELLAR PUMP KEEPING UP. HAD TO ADJUST RATE MANY TIMES THROUGH JOB.
Drop Top Plug	09/10/2010 15:32							PLUG AWAY
Pump Displacement	09/10/2010 15:32		5	205.3			715.0	FRESH WATER. GOT RETURNS 60 BBLs INTO DISPLACEMENT.
Slow Rate	09/10/2010 16:02		4	150			837.0	
Slow Rate	09/10/2010 16:14		2	195			711.0	
Bump Plug	09/10/2010 16:19		2	205.3			775.0	PLUG LANDED. PUMPED TO 1350 PSI. 11 SF TRUCK HOURS.
Check Floats	09/10/2010 16:23							FLOATS HELD
Clean Lines	09/10/2010 16:32		1	1			.0	PUMPED WATER INTO CELLAR TO MAKE SURE LINE WAS CLEAN
Pump Water	09/10/2010 16:38		4	10			1200. 0	PUMP SUGAR WATER DOWN PARASITE STRING.

Cementing Job Log

Activity Description	Date/Time	Cht #	Rate bbl/min	Volume bbl		Pressure psig		Comments
				Stage	Total	Tubing	Casing	
Shutdown	09/10/2010 16:44							
Pressure Test	09/10/2010 16:53							CASING TEST TO 1500 PSI.
Release Casing Pressure	09/10/2010 17:08							CASING TEST SUCCESSFUL.
End Job	09/10/2010 17:10							122 BBLs. CEMENT TO SURFACE. CEMENT FELL.
Other	09/10/2010 17:10							DURING WHOLE JOB WE WERE GETTING HUGE GAS BUBBLES TO SURFACE. SAFETY MAN ON LOCATION TESTED CO2 LEVELS AT 45 PPM. THE 9.3 MUD TURNED VERY THICK. SAMPLE OF MUD TAKEN.
Start Job	09/10/2010 18:44							
Pump Spacer	09/10/2010 18:44		1	1			.0	
Pump Cement	09/10/2010 18:46		2	5.3			23.0	HALCEM- 15 SKS, 12.5, 1.97, 10.96
Shutdown	09/10/2010 18:52							1 BBL CEMENT TO SURFACE
Clean Lines	09/10/2010 18:55							
End Job	09/10/2010 18:59							
Pre-Rig Down Safety Meeting	09/10/2010 19:20							
Rig-Down Equipment	09/10/2010 19:30							
Pre-Convoy Safety Meeting	09/10/2010 20:50							
Crew Leave Location	09/10/2010 21:00							THANK YOU FOR USING HALLIBURTON.

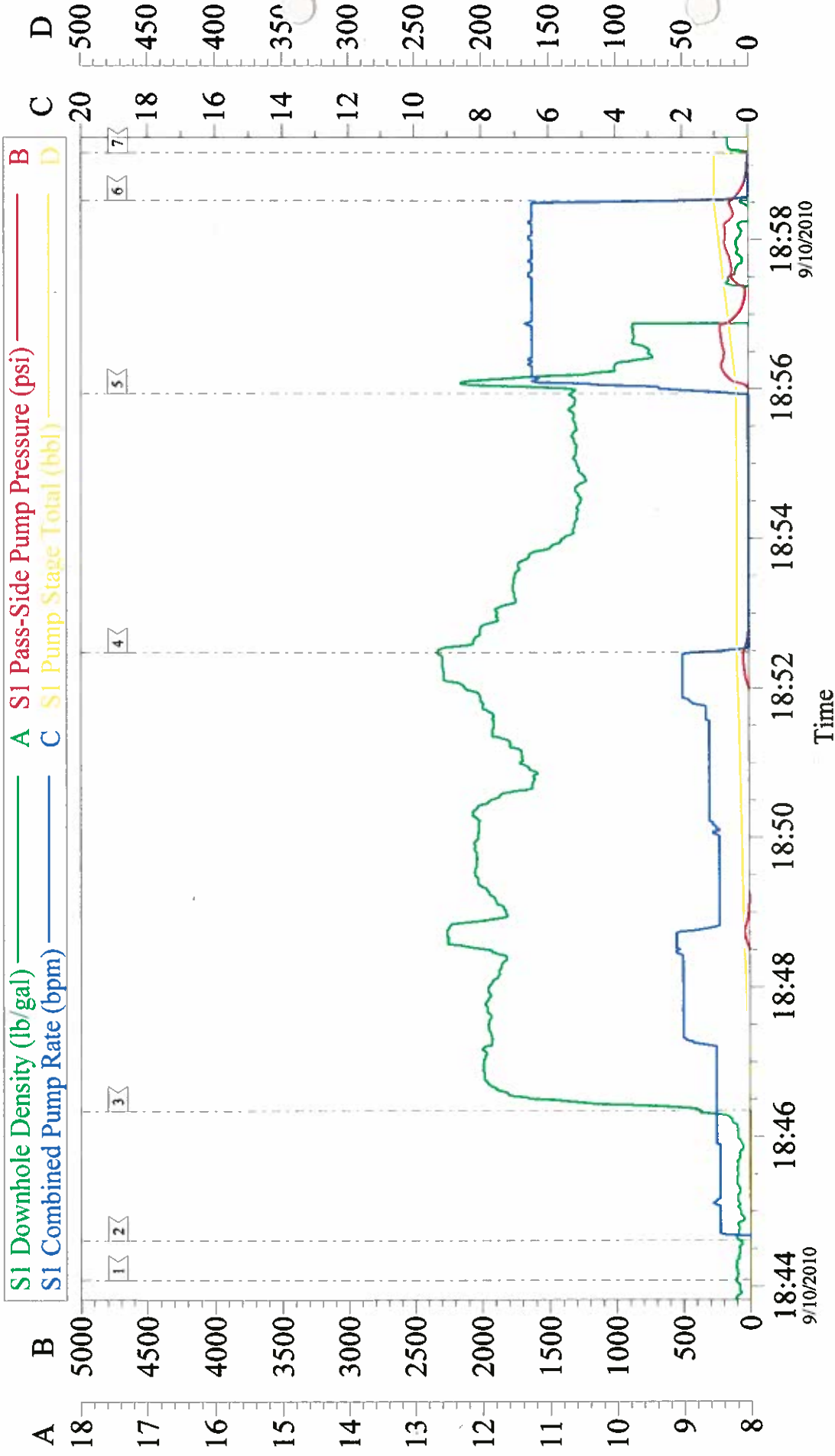
OXY 9 5/8" SURFACE



Local Event Log			
1	START JOB	12:42:51	2
4	FILL LINES	13:02:41	5
7	PUMP SUPERFLUSH	13:15:42	8
10	RESUME SPACER	13:35:10	11
13	SHUT DOWN	15:30:30	14
16	SLOW RATE	16:02:58	17
19	CHECK FLOATS	16:23:17	20
22	SHUT DOWN	16:44:08	23
25	END JOB	17:10:13	
3	SHUT DOWN	12:43:19	6
6	PUMP WATER SPACER	13:04:56	9
9	SHUT DOWN	13:25:53	12
12	PUMP TAIL CEMENT	13:37:54	15
15	PUMP DISPLACEMENT	15:32:01	18
18	BUMP PLUG	16:14:09	21
21	PUMP DOWN PARASITE	16:32:59	24
24	RELEASE PRESSURE	16:53:14	
		17:08:40	

Customer: OXY	Job Date: 10-Sep-2010	Sales Order #: 7622901
Well Description: CC 697-09-50A	Job Type: SURFACE	ADC Used: YES
Company Rep: MARCO SILVA	Cement Supervisor: AARON HONE	Elite # / Operator: 6/ RUSTY WEAVER

OXY TOP OUT



Customer: OXY	Job Date: 10-Sep-2010	Sales Order #: 7622901
Well Description: CC 697-09-50A	Job Type: TOP OUT	ADC Used: YES
Company Rep: MARCO SILVA	Cement Supervisor: AARON HONE	Elite # / Operator: 6/ RUSTY WEAVER