

Gunderson 12-10A

Isolate Completion Interval

1. Set CIBP @ 2600'.
2. Dump bail 2 sacks of cement on top of CIBP.

Isolate TOG

3. CBL dated 6/20/96 indicates that the top of cement is at 2590', above the top of gas at 2631'.

Isolate BTW

4. Perforate 4-1/2" casing at 1140' (100' below BTW at 1040').
5. Set cement retainer at 1090'.
6. Sting into retainer and squeeze 50 cuft of cement below retainer.
7. Unsting from retainer and equalize 14 cuft of cement on top of retainer.

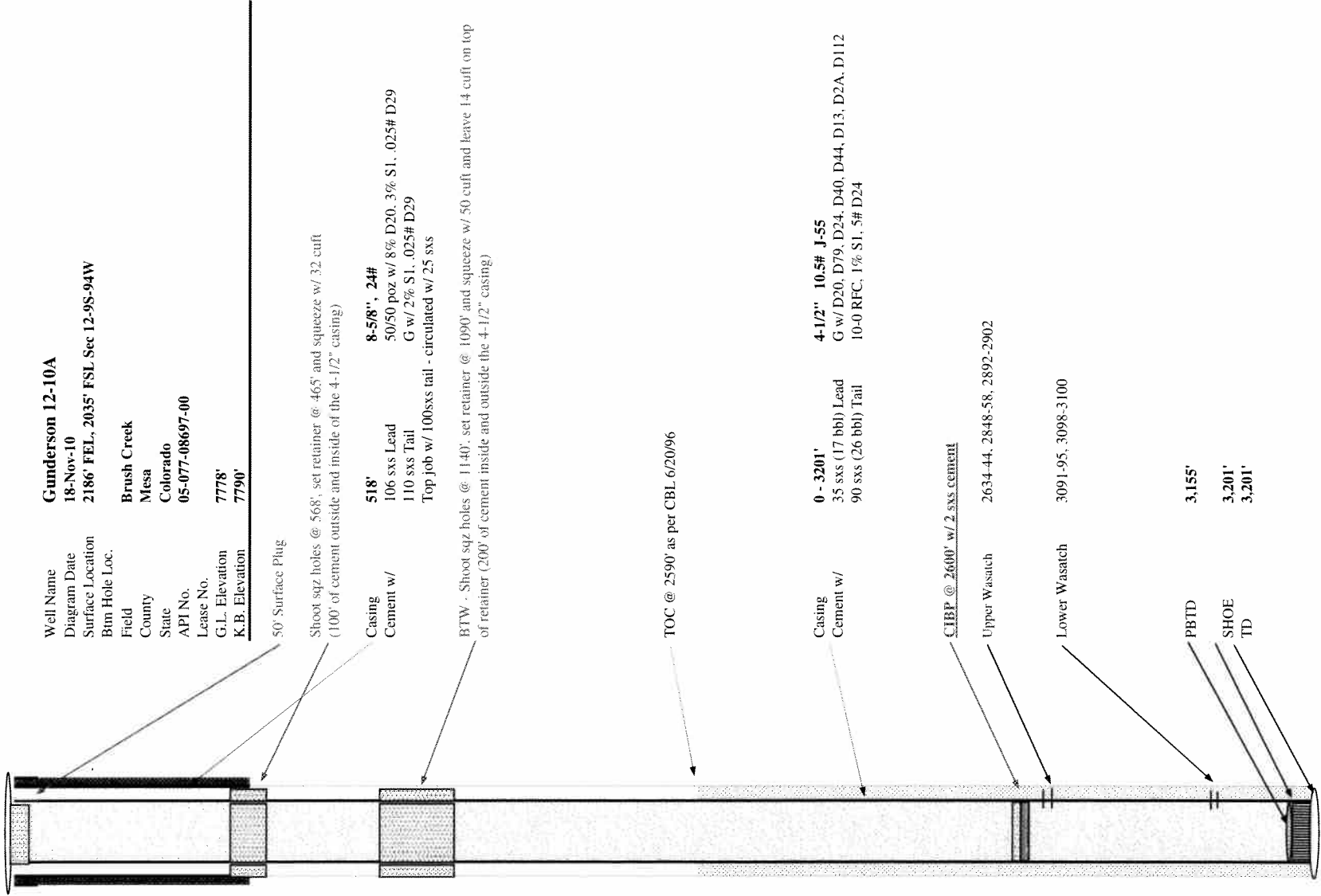
Note: Steps 6 and 7 will leave 200' of cement both inside and outside the casing.

Isolate Surface Casing & Set Surface Plug

8. Perforate 4-1/2" casing at 568'.
9. Set cement retainer at 465'.
10. Sting into retainer and squeeze 32 cuft of cement. This will circulate cement on the inside and outside of the 4-1/2" casing from 568' to 465'.
11. Unsting from retainer, raise tubing to 50' and equalize 5 cuft of cement inside of 4-1/2" casing from 50' to surface.
12. Cut off casings 5' below ground level, weld on metal cap and install surface marker.



Well Bore Schematic
Proposed Abandonment





Well Bore Schematic

No scale

