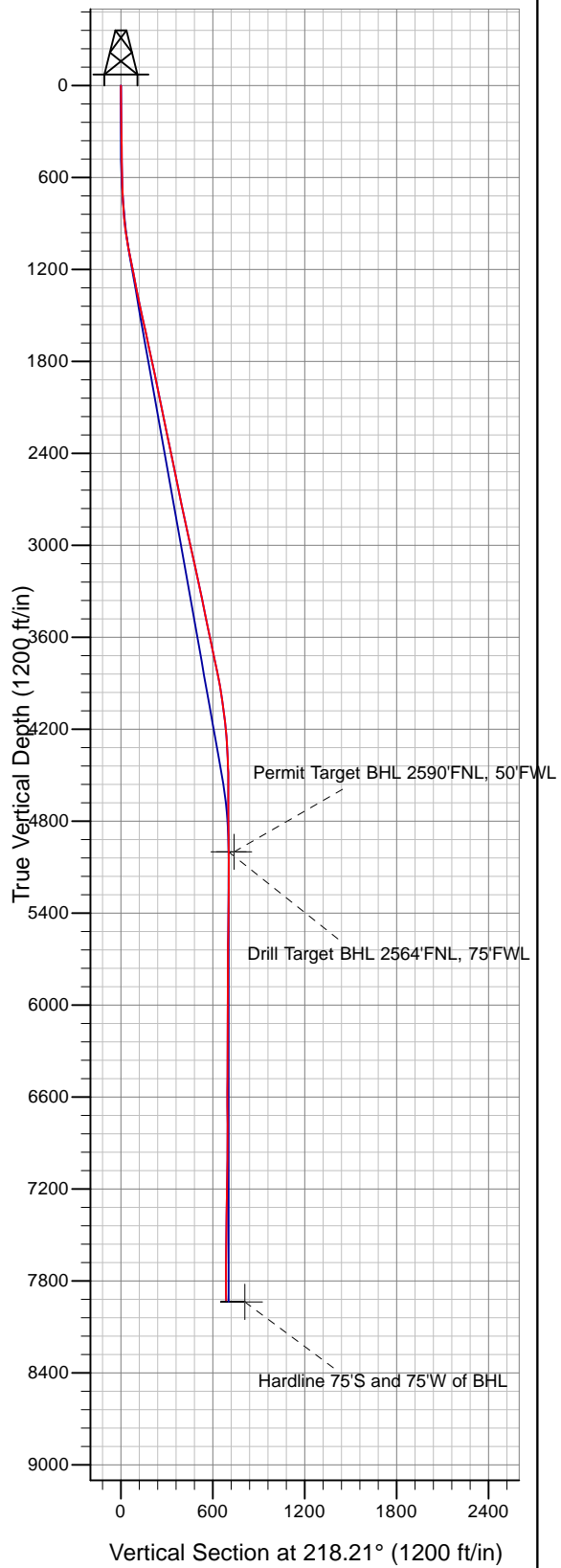


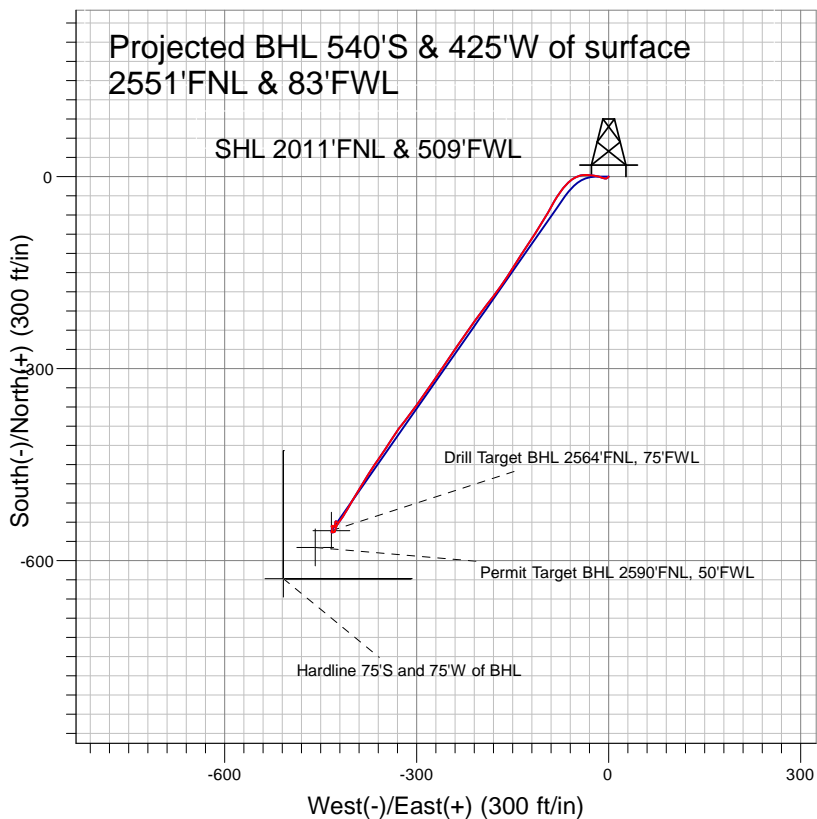
Well Name: **Davis 0-4-9**

Surface Location: Davis 4-2-9 Pad Sec. 9-T2N-R66W
 North American Datum 1983 , US State Plane 1983 , Colorado Northern Zone
 Ground Elevation: 4880.0

+N/-S+E/-W	Northing	Easting	Latitude	Longitude	Slot
0.0	0.0	1299856.85 3198493.16	40° 9' 15.552 N	104° 47' 23.532 W	
Original Well Elev WELL @ 4892.0ft (Original Well Elev)					



EnCana Oil & Gas Weld County CO



LEGEND

- Davis 0-4-9, Wellbore #1, Plan#1 (6-14-10) V0
- Wellbore #1
- Survey #1

Final Survey Plot

Projected Final Survey -
 7996'MD & 7926'TVD @ 687' VS
 0.7 deg Inc 191.3 deg AZ

Project: SEC.9-T2N-R66W
 Site: Davis 4-2-9 Pad Sec. 9-T2N-R66W
 Well: Davis 0-4-9
 Plan: Wellbore #1



EnCana Oil & Gas Weld County CO

SEC.9-T2N-R66W

Davis 4-2-9 Pad Sec. 9-T2N-R66W

Davis 0-4-9

Wellbore #1

Survey: Survey #1

Standard Survey Report

27 August, 2010

Company:	EnCana Oil & Gas Weld County CO	Local Co-ordinate Reference:	Well Davis 0-4-9
Project:	SEC.9-T2N-R66W	TVD Reference:	WELL @ 4892.0ft (Original Well Elev)
Site:	Davis 4-2-9 Pad Sec. 9-T2N-R66W	MD Reference:	WELL @ 4892.0ft (Original Well Elev)
Well:	Davis 0-4-9	North Reference:	True
Wellbore:	Wellbore #1	Survey Calculation Method:	Minimum Curvature
Design:	Wellbore #1	Database:	EDM den0-adp01 Server Data

Project	SEC.9-T2N-R66W, Weld County, Colorado		
Map System:	US State Plane 1983	System Datum:	Mean Sea Level
Geo Datum:	North American Datum 1983		Using Well Reference Point
Map Zone:	Colorado Northern Zone		Using geodetic scale factor

Site	Davis 4-2-9 Pad Sec. 9-T2N-R66W				
Site Position:		Northing:	1,299,857.04ft	Latitude:	40° 9' 15.552 N
From:	Lat/Long	Easting:	3,198,515.52ft	Longitude:	104° 47' 23.244 W
Position Uncertainty:	0.0 ft	Slot Radius:	"	Grid Convergence:	0.46 °

Well	Davis 0-4-9					
Well Position	+N/-S	0.0 ft	Northing:	1,299,856.85 ft	Latitude:	40° 9' 15.552 N
	+E/-W	0.0 ft	Easting:	3,198,493.16 ft	Longitude:	104° 47' 23.532 W
Position Uncertainty		0.0 ft	Wellhead Elevation:	ft	Ground Level:	4,880.0 ft

Wellbore	Wellbore #1				
Magnetics	Model Name	Sample Date	Declination (°)	Dip Angle (°)	Field Strength (nT)
	IGRF2010	6/14/2010	8.99	66.88	53,105

Design	Wellbore #1				
Audit Notes:					
Version:	1.0	Phase:	ACTUAL	Tie On Depth:	0.0
Vertical Section:	Depth From (TVD) (ft)	+N/-S (ft)	+E/-W (ft)	Direction (°)	
	0.0	0.0	0.0	218.21	

Survey Program		Date	8/27/2010		
From (ft)	To (ft)	Survey (Wellbore)	Tool Name	Description	
121.0	7,996.0	Survey #1 (Wellbore #1)	MWD	MWD - Standard	

Survey										
Measured Depth (ft)	Inclination (°)	Azimuth (°)	Vertical Depth (ft)	+N/-S (ft)	+E/-W (ft)	Vertical Section (ft)	Dogleg Rate (°/100ft)	Build Rate (°/100ft)	Turn Rate (°/100ft)	
0.0	0.00	0.00	0.0	0.0	0.0	0.0	0.00	0.00	0.00	
121.0	0.90	226.30	121.0	-0.7	-0.7	0.9	0.74	0.74	0.00	
212.0	0.70	230.50	212.0	-1.5	-1.6	2.2	0.23	-0.22	4.62	
303.0	0.80	242.90	303.0	-2.1	-2.6	3.3	0.21	0.11	13.63	
395.0	0.80	229.10	395.0	-2.9	-3.7	4.5	0.21	0.00	-15.00	
486.0	1.50	281.10	486.0	-3.0	-5.3	5.7	1.31	0.77	57.14	
577.0	3.40	286.60	576.9	-2.0	-9.1	7.2	2.10	2.09	6.04	
669.0	5.00	288.20	668.6	0.0	-15.5	9.6	1.74	1.74	1.74	
758.0	6.90	276.50	757.1	1.8	-24.5	13.7	2.52	2.13	-13.15	
809.0	6.90	276.50	807.8	2.5	-30.6	17.0	0.00	0.00	0.00	
868.0	7.40	267.50	866.3	2.7	-37.9	21.3	2.08	0.85	-15.25	
963.0	9.10	245.10	960.3	-0.7	-50.8	32.0	3.79	1.79	-23.58	
1,057.0	10.60	225.10	1,053.0	-9.9	-63.7	47.2	3.95	1.60	-21.28	

Company:	EnCana Oil & Gas Weld County CO	Local Co-ordinate Reference:	Well Davis 0-4-9
Project:	SEC.9-T2N-R66W	TVD Reference:	WELL @ 4892.0ft (Original Well Elev)
Site:	Davis 4-2-9 Pad Sec. 9-T2N-R66W	MD Reference:	WELL @ 4892.0ft (Original Well Elev)
Well:	Davis 0-4-9	North Reference:	True
Wellbore:	Wellbore #1	Survey Calculation Method:	Minimum Curvature
Design:	Wellbore #1	Database:	EDM den0-adp01 Server Data

Survey

Measured Depth (ft)	Inclination (°)	Azimuth (°)	Vertical Depth (ft)	+N/-S (ft)	+E/-W (ft)	Vertical Section (ft)	Dogleg Rate (°/100ft)	Build Rate (°/100ft)	Turn Rate (°/100ft)
1,153.0	11.20	216.10	1,147.3	-23.7	-75.5	65.3	1.88	0.63	-9.38
1,247.0	11.10	208.70	1,239.5	-39.0	-85.2	83.4	1.53	-0.11	-7.87
1,341.0	12.10	210.90	1,331.6	-55.4	-94.6	102.0	1.16	1.06	2.34
1,436.0	11.80	210.20	1,424.5	-72.3	-104.6	121.5	0.35	-0.32	-0.74
1,530.0	12.70	214.10	1,516.4	-89.2	-115.2	141.4	1.30	0.96	4.15
1,625.0	11.90	213.00	1,609.2	-106.1	-126.4	161.5	0.88	-0.84	-1.16
1,719.0	12.80	212.30	1,701.0	-123.0	-137.3	181.5	0.97	0.96	-0.74
1,813.0	11.60	212.30	1,792.9	-139.8	-147.9	201.3	1.28	-1.28	0.00
1,908.0	12.00	213.10	1,885.9	-156.1	-158.4	220.6	0.45	0.42	0.84
2,002.0	11.90	214.90	1,977.8	-172.3	-169.2	240.1	0.41	-0.11	1.91
2,097.0	11.60	217.60	2,070.9	-187.9	-180.7	259.4	0.66	-0.32	2.84
2,191.0	12.00	217.50	2,162.9	-203.1	-192.4	278.6	0.43	0.43	-0.11
2,286.0	11.20	216.10	2,255.9	-218.4	-203.8	297.7	0.89	-0.84	-1.47
2,381.0	12.00	217.70	2,349.0	-233.7	-215.3	316.8	0.91	0.84	1.68
2,475.0	11.80	213.40	2,441.0	-249.4	-226.6	336.1	0.97	-0.21	-4.57
2,570.0	11.60	213.20	2,534.0	-265.5	-237.2	355.3	0.21	-0.21	-0.21
2,664.0	11.40	214.50	2,626.1	-281.1	-247.6	374.0	0.35	-0.21	1.38
2,758.0	11.50	215.70	2,718.2	-296.4	-258.3	392.7	0.27	0.11	1.28
2,853.0	12.00	213.70	2,811.2	-312.3	-269.3	412.0	0.68	0.53	-2.11
2,947.0	13.10	213.20	2,903.0	-329.3	-280.6	432.3	1.18	1.17	-0.53
3,042.0	12.80	216.10	2,995.6	-346.8	-292.7	453.6	0.75	-0.32	3.05
3,136.0	12.30	215.90	3,087.3	-363.3	-304.7	474.0	0.53	-0.53	-0.21
3,231.0	11.60	220.10	3,180.3	-378.8	-316.8	493.6	1.17	-0.74	4.42
3,325.0	11.90	213.70	3,272.3	-394.1	-328.2	512.7	1.42	0.32	-6.81
3,419.0	11.20	213.90	3,364.4	-409.8	-338.7	531.5	0.75	-0.74	0.21
3,514.0	11.80	212.90	3,457.5	-425.6	-349.1	550.4	0.67	0.63	-1.05
3,608.0	12.20	215.50	3,549.4	-441.8	-360.1	569.9	0.72	0.43	2.77
3,703.0	12.20	211.20	3,642.3	-458.5	-371.2	589.8	0.96	0.00	-4.53
3,797.0	12.40	212.40	3,734.1	-475.5	-381.7	609.7	0.35	0.21	1.28
3,891.0	11.40	211.80	3,826.1	-491.9	-392.0	629.0	1.07	-1.06	-0.64
3,986.0	9.70	210.50	3,919.5	-506.8	-401.0	646.3	1.81	-1.79	-1.37
4,080.0	8.50	209.60	4,012.3	-519.7	-408.5	661.0	1.29	-1.28	-0.96
4,175.0	7.30	213.20	4,106.4	-530.8	-415.2	674.0	1.37	-1.26	3.79
4,269.0	5.80	216.20	4,199.8	-539.7	-421.3	684.6	1.64	-1.60	3.19
4,363.0	3.40	202.70	4,293.5	-546.1	-425.2	692.1	2.78	-2.55	-14.36
4,458.0	3.20	198.40	4,388.3	-551.2	-427.1	697.3	0.33	-0.21	-4.53
4,553.0	1.00	197.60	4,483.3	-554.5	-428.2	700.6	2.32	-2.32	-0.84
4,648.0	0.20	32.20	4,578.3	-555.1	-428.4	701.2	1.26	-0.84	-174.11
4,742.0	0.20	96.60	4,672.3	-555.0	-428.1	700.9	0.23	0.00	68.51
4,836.0	0.40	265.50	4,766.3	-555.1	-428.3	701.1	0.64	0.21	179.68
4,931.0	0.90	253.90	4,861.3	-555.3	-429.3	701.9	0.54	0.53	-12.21
5,025.0	0.70	254.80	4,955.3	-555.7	-430.6	703.0	0.21	-0.21	0.96
5,069.8	0.84	260.80	5,000.0	-555.8	-431.2	703.4	0.36	0.31	13.39
Drill Target BHL 2564'FNL, 75'FWL									
5,070.2	0.84	260.80	5,000.5	-555.8	-431.2	703.4	0.00	0.00	0.00
Permit Target BHL 2590'FNL, 50'FWL									
5,120.0	1.00	265.50	5,050.2	-555.9	-432.0	704.0	0.36	0.33	9.45
5,214.0	0.30	346.00	5,144.2	-555.7	-432.9	704.4	1.06	-0.74	85.64
5,309.0	0.50	351.90	5,239.2	-555.1	-433.0	703.9	0.21	0.21	6.21
5,403.0	1.10	6.40	5,333.2	-553.7	-432.9	702.9	0.67	0.64	15.43
5,497.0	0.40	67.60	5,427.2	-552.7	-432.5	701.8	1.03	-0.74	65.11
5,592.0	0.70	20.00	5,522.2	-552.1	-432.0	701.0	0.55	0.32	-50.11
5,686.0	0.70	7.90	5,616.2	-550.9	-431.8	700.0	0.16	0.00	-12.87
5,781.0	0.40	15.20	5,711.2	-550.1	-431.6	699.2	0.32	-0.32	7.68

Company:	EnCana Oil & Gas Weld County CO	Local Co-ordinate Reference:	Well Davis 0-4-9
Project:	SEC.9-T2N-R66W	TVD Reference:	WELL @ 4892.0ft (Original Well Elev)
Site:	Davis 4-2-9 Pad Sec. 9-T2N-R66W	MD Reference:	WELL @ 4892.0ft (Original Well Elev)
Well:	Davis 0-4-9	North Reference:	True
Wellbore:	Wellbore #1	Survey Calculation Method:	Minimum Curvature
Design:	Wellbore #1	Database:	EDM den0-adp01 Server Data

Survey

Measured Depth (ft)	Inclination (°)	Azimuth (°)	Vertical Depth (ft)	+N/-S (ft)	+E/-W (ft)	Vertical Section (ft)	Dogleg Rate (°/100ft)	Build Rate (°/100ft)	Turn Rate (°/100ft)
5,875.0	0.50	338.60	5,805.2	-549.4	-431.6	698.6	0.32	0.11	-38.94
5,969.0	0.60	332.20	5,899.2	-548.5	-432.0	698.2	0.12	0.11	-6.81
6,065.0	0.70	330.80	5,995.2	-547.6	-432.5	697.8	0.11	0.10	-1.46
6,159.0	0.50	347.80	6,089.2	-546.7	-432.9	697.3	0.28	-0.21	18.09
6,254.0	0.40	34.00	6,184.2	-546.0	-432.8	696.7	0.38	-0.11	48.63
6,349.0	0.40	93.00	6,279.2	-545.7	-432.3	696.2	0.41	0.00	62.11
6,443.0	0.30	80.30	6,373.2	-545.7	-431.7	695.8	0.13	-0.11	-13.51
6,538.0	0.40	78.60	6,468.2	-545.6	-431.2	695.4	0.11	0.11	-1.79
6,632.0	0.30	88.40	6,562.2	-545.5	-430.6	695.0	0.12	-0.11	10.43
6,728.0	0.30	166.80	6,658.2	-545.8	-430.3	695.0	0.40	0.00	81.67
6,822.0	0.40	164.30	6,752.2	-546.3	-430.1	695.3	0.11	0.11	-2.66
6,917.0	0.30	121.00	6,847.2	-546.8	-429.8	695.5	0.29	-0.11	-45.58
7,011.0	0.50	117.60	6,941.2	-547.1	-429.3	695.4	0.21	0.21	-3.62
7,105.0	0.40	48.50	7,035.2	-547.1	-428.7	695.0	0.55	-0.11	-73.51
7,200.0	0.80	24.20	7,130.2	-546.2	-428.1	694.0	0.49	0.42	-25.58
7,294.0	1.40	16.20	7,224.1	-544.5	-427.5	692.3	0.66	0.64	-8.51
7,389.0	1.30	359.60	7,319.1	-542.3	-427.2	690.4	0.42	-0.11	-17.47
7,483.0	1.00	3.60	7,413.1	-540.5	-427.2	688.9	0.33	-0.32	4.26
7,577.0	0.70	15.30	7,507.1	-539.1	-427.0	687.7	0.37	-0.32	12.45
7,672.0	0.40	72.50	7,602.1	-538.4	-426.5	686.9	0.62	-0.32	60.21
7,766.0	0.30	99.30	7,696.1	-538.4	-426.0	686.5	0.20	-0.11	28.51
7,861.0	0.60	118.70	7,791.1	-538.7	-425.3	686.3	0.35	0.32	20.42
7,951.0	0.70	191.30	7,881.1	-539.4	-425.0	686.7	0.86	0.11	80.67
7,996.0	0.70	191.30	7,926.1	-540.0	-425.1	687.2	0.00	0.00	0.00

Hardline 75'S and 75'W of BHL

Wellbore Targets

Target Name	Dip Angle (°)	Dip Dir. (°)	TVD (ft)	+N/-S (ft)	+E/-W (ft)	Northing (ft)	Easting (ft)	Latitude	Longitude
- hit/miss target									
- Shape									
Drill Target BHL 2564	0.00	0.00	5,000.0	-553.2	-433.4	1,299,300.22	3,198,064.23	40° 9' 10.085 N	104° 47' 29.113 W
- survey misses target center by 3.4ft at 5069.8ft MD (5000.0 TVD, -555.8 N, -431.2 E)									
- Point									
Permit Target BHL 25	0.00	0.00	5,000.0	-579.2	-458.4	1,299,274.00	3,198,039.39	40° 9' 9.828 N	104° 47' 29.436 W
- survey misses target center by 35.9ft at 5070.2ft MD (5000.4 TVD, -555.8 N, -431.2 E)									
- Point									
Hardline 75'S and 75'W	0.00	0.00	7,937.0	-628.2	-508.4	1,299,224.63	3,197,989.83	40° 9' 9.344 N	104° 47' 30.079 W
- survey misses target center by 121.9ft at 7996.0ft MD (7926.1 TVD, -540.0 N, -425.1 E)									
- Polygon									
Point 1			7,937.0	0.0	0.0	1,299,224.63	3,197,989.83		
Point 2			7,937.0	0.0	200.0	1,299,226.23	3,198,189.82		
Point 3			7,937.0	0.0	0.0	1,299,224.63	3,197,989.83		
Point 4			7,937.0	200.0	0.0	1,299,424.61	3,197,988.23		

Checked By: _____ Approved By: _____ Date: _____