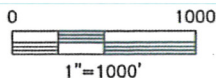
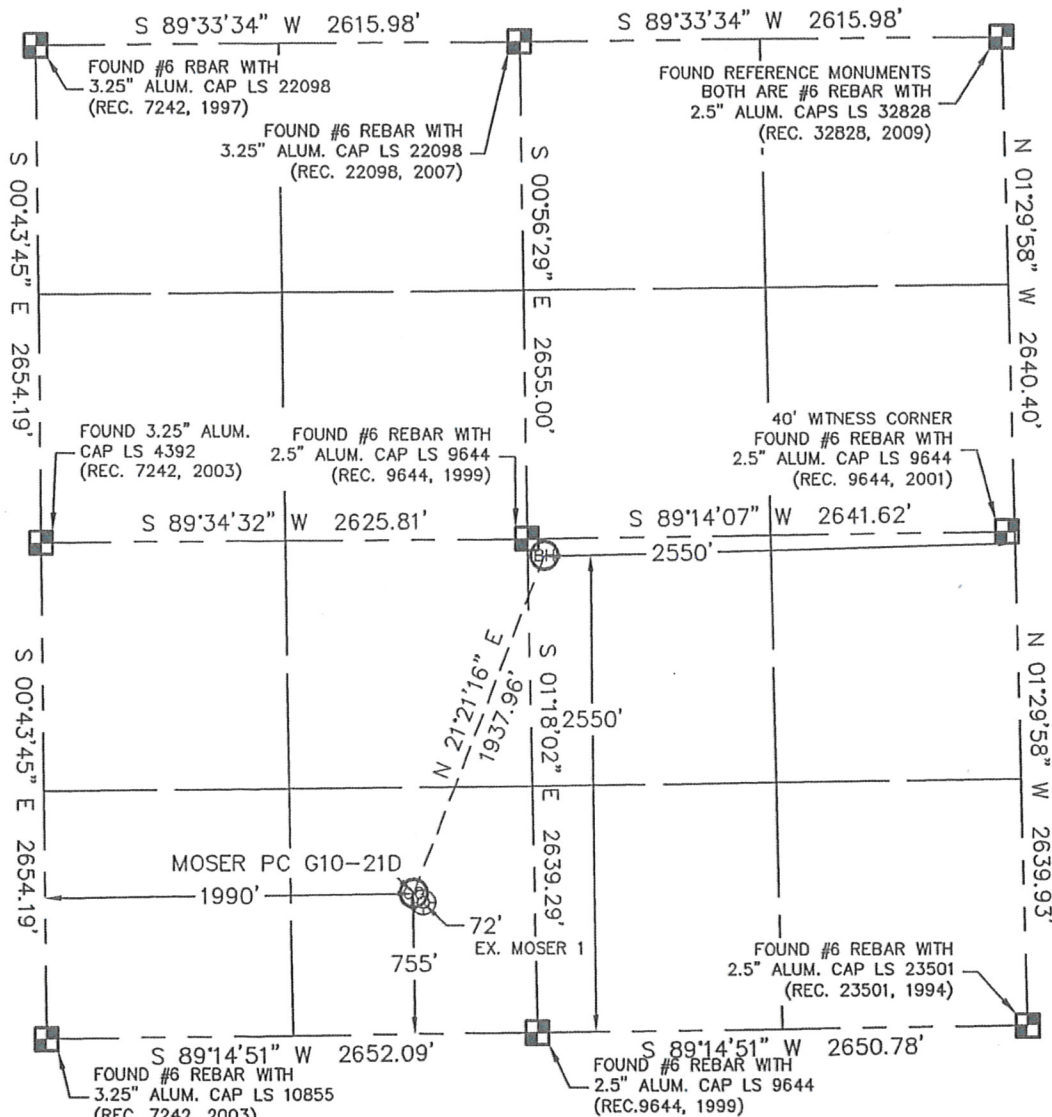


WELL LOCATION CERTIFICATE

THIS MAP DOES NOT REPRESENT A BOUNDARY SURVEY

SECTION: 10
TOWNSHIP: 4N
RANGE: 65W



In accordance with a request from Beau Fritz with Noble Energy Inc. Lat40°, LLC has determined the surface location of the MOSER PC G10-21D to be 755' from the SOUTH line and 1990' from the WEST line and the bottom hole to be 2550' from the SOUTH line and 2550' from the EAST line as measured at right angles from the section lines of Section 10, Township 4 North, Range 65 West of the Sixth Principal Meridian, County of Weld, State of Colorado.

I hereby state that this Well Location Certificate was prepared by me, or under my direct supervision, that the fieldwork was completed on 9-2-10, for and on behalf of Noble Energy Inc. That this is not a Land Survey Plat or an Improvement Survey Plat, and that it is not to be relied upon for establishment of fence, building, or other future improvement lines.

NOTE:

- 1) Bearings shown are Grid Bearings of the Colorado State Plane Coordinate System, North Zone, North American Datum 1983/2007. The lineal dimensions as contained herein are based upon the "U.S. Survey Foot."
- 2) Ground elevations are based on an observed GPS elevation (NAVD 1988 DATUM).
- 3) NEAREST EXISTING WELL: MOSER 1 72'
- 4) IMPROVEMENTS: See LOCATION DRAWING for all visible improvements within 400' of disturbed area.
- 5) SURFACE USE: CROP IRRIGATED
- 6) INSTRUMENT OPERATOR: BRIAN BRINKMAN

NOTE

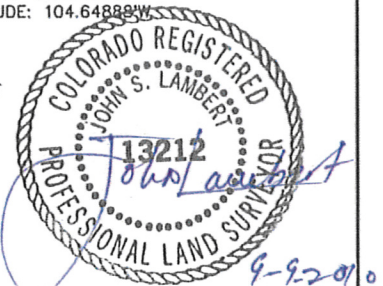
According to Colorado law, you must commence any legal action based upon any defect in this W.L.C. within three years after you discover such defect. In no event, may any action based upon any defect in this survey be commenced more than ten years after the date of the certificate shown hereon. (13-80-105 C.R.S.)

LEGEND

- = ALIQUOT MONUMENT AS DESCRIBED
- = CALCULATED POSITION

SURFACE LOCATION
LATITUDE: 40.32180°N
LONGITUDE: 104.65147°W
PDOP: 1.7
ELEV: 4697
1/4, 1/4: SE1/4SW1/4
NEAREST PROPERTY LINE: 655' EAST

BOTTOM HOLE
LATITUDE: 40.32673°N
LONGITUDE: 104.64888°W



John S. Lambert—On behalf of Lat40°, LLC
Colorado Licensed Professional
Land Surveyor No. 13212 PROJECT#: 2010096

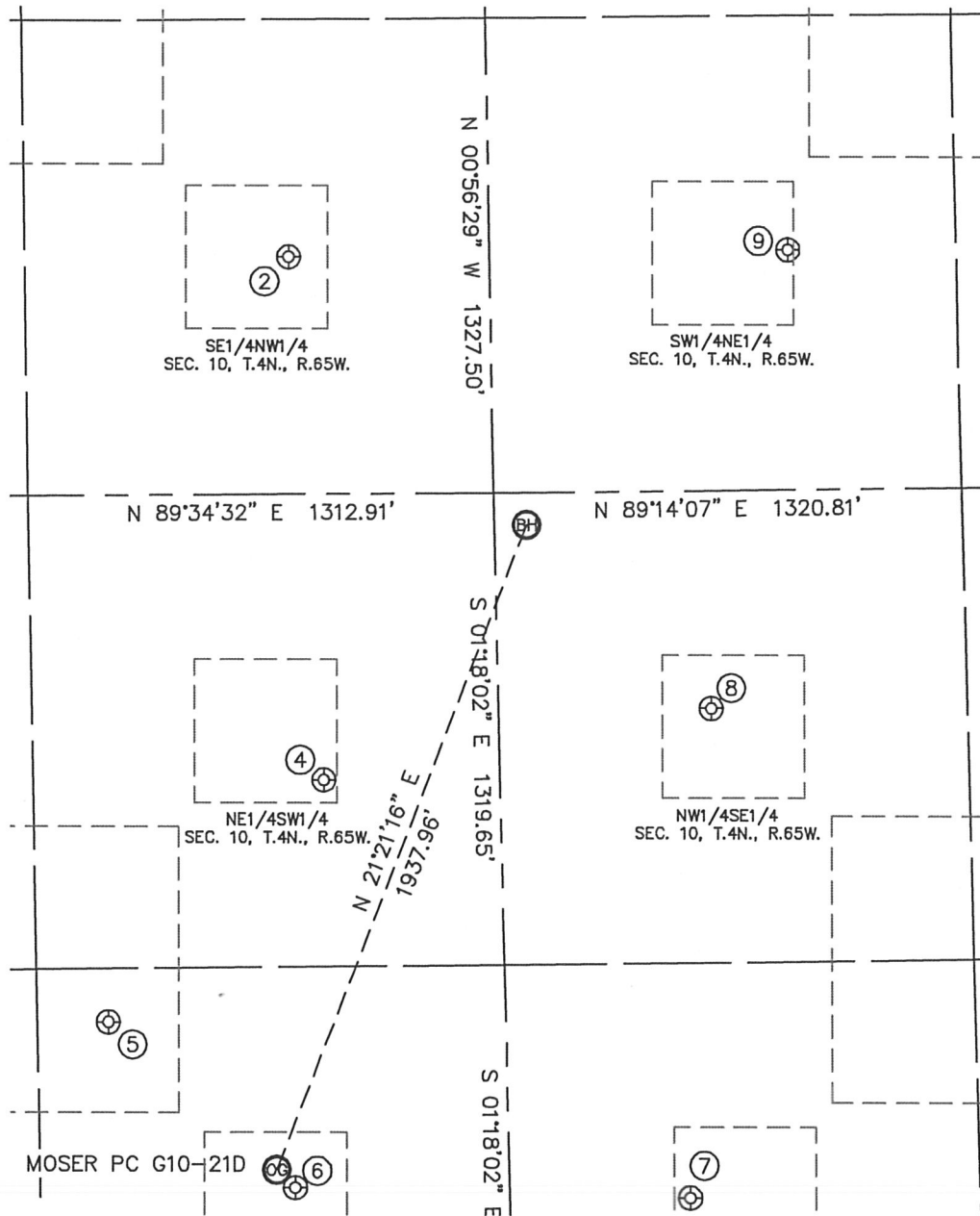
Lat40°, LLC

1635 Foxtrail Drive, Suite 325

Loveland, CO 80538

SITE SKETCH

MOSER PC G10-21D

SECTION: 10
TOWNSHIP: 4N
RANGE: 65W

④
MOSER 10-31
NE1/4SW1/4
1843' FSL
2136' FWL
LAT-40.32479°N
LONG-104.65096°W
PDOP: 2.4
ELEV: 4684

⑤
MOSER 10-35
SE1/4SW1/4
1173' FSL
1520' FWL
LAT-40.32295°N
LONG-104.65316°W
PDOP: 2.2
ELEV: 4698

⑥
MOSER 1
SE1/4SW1/4
704' FSL
2041' FWL
LAT-40.32166°N
LONG-104.65129°W
PDOP: 2.7
ELEV: 4698

⑦
BOULTER 10-43
SW1/4SE1/4
663' FSL
2141' FEL
LAT-40.32156°N
LONG-104.64730°W
PDOP: 2.1
ELEV: 4683

⑧
WAGNER 10-1
NW1/4SE1/4
2031' FSL
2044' FEL
LAT-40.32532°N
LONG-104.64703°W
PDOP: 2.2
ELEV: 4680

②
GIRVAN 22-10
SE1/4NW1/4
1992' FNL
2057' FWL
LAT-40.32880°N
LONG-104.65126°W
PDOP: 2.2
ELEV: 4680

⑨
HSR-MEAD 7-10
SW1/4NE1/4
1980' FNL
1792' FEL
LAT-40.32883°N
LONG-104.64620°W
PDOP: 1.4
ELEV: 4676

