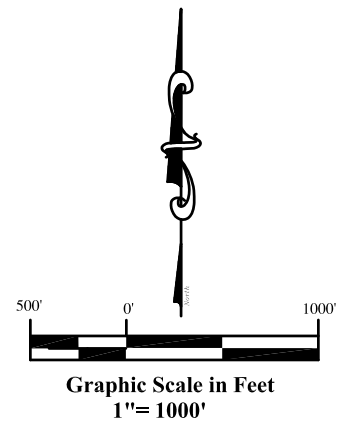
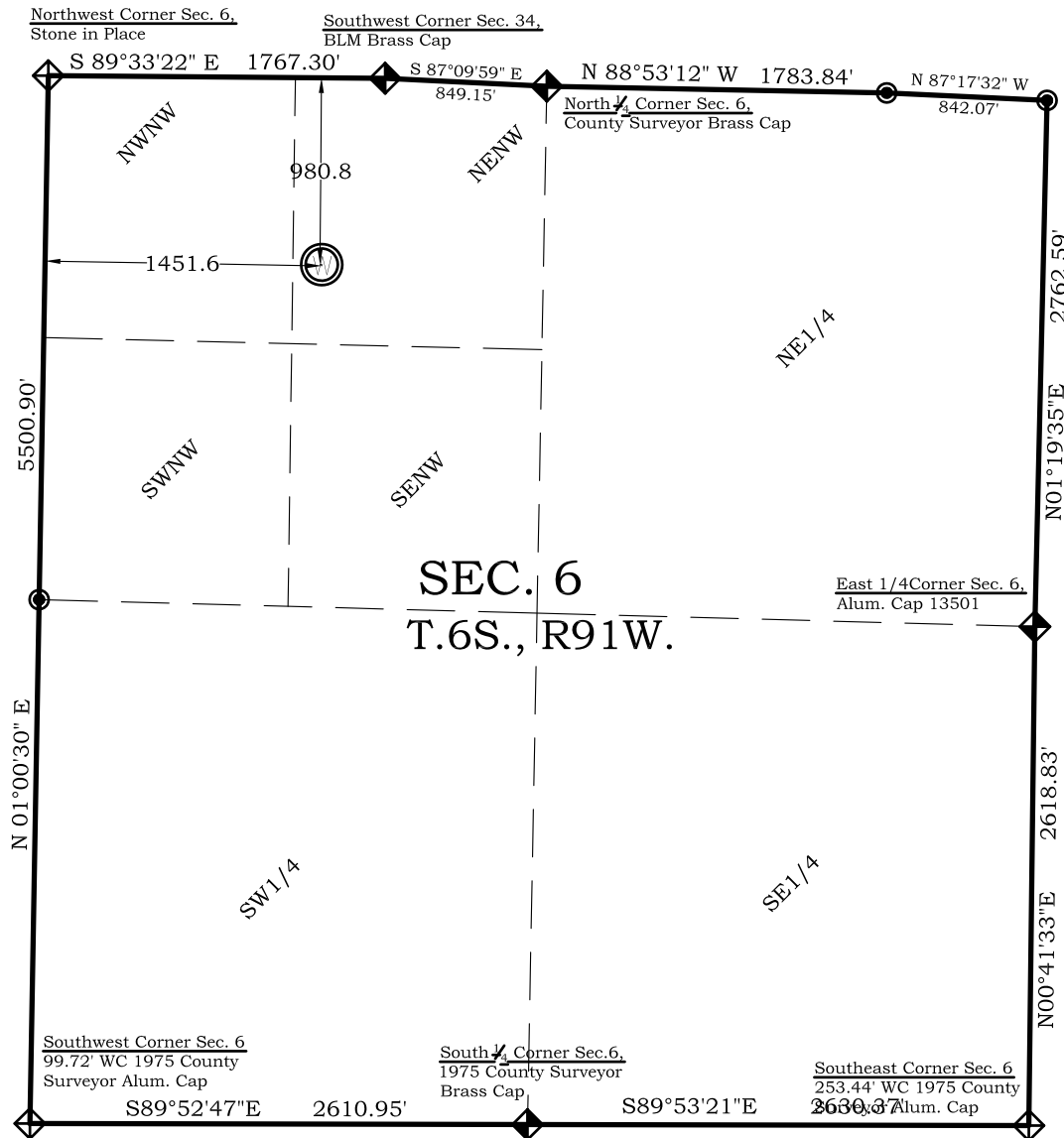


# As Drilled Well Location Plat

## Maves A1

### Section 6, Township 6 South, Range 91 West



#### Legend

- ◈ - Field Surveyed Section Corner
- ◈ - Field Surveyed Quarter Corner
- - Calculated Section Corner Location

#### Maves A1 As Drilled Surface Location

981' FNL  
1452' FWL  
Gnd El= 5760.8

#### NAD83

Lat: 39.561463775°N  
Long: 107.601747393°W

#### NAD27

Lat: 39.561483147°N  
Long: 107.601134119°W

UTM 13 NORTH

#### NAD 1983

Northing  
14377658.915  
Easting  
907107.179

#### Prepared For Antero Resources

As Drilled Maves A1 Well Situate in The NW $\frac{1}{4}$  Section 6,  
Township 6 South, Range 91 West of the 6 th. Principal  
Meridian, County of Garfield, State of Colorado

#### SURVEYOR'S CERTIFICATE

I, SCOTT E. AIBNER, A REGISTERED LAND SURVEYOR, LICENSED UNDER THE LAWS OF THE STATE OF COLORADO DO HEREBY CERTIFY THAT THE SURVEY SHOWN HEREON WAS PREPARED BY RIVER VALLEY SURVEY, INC. FOR ANTERO RESOURCES, BY ME OR UNDER MY DIRECT SUPERVISION AND THAT THIS PLAT IS A TRUE REPRESENTATION THEREOF.

BY:

SCOTT E. AIBNER, COLORADO REG. NO. 31143

#### Notes:

1. LATITUDE AND LONGITUDE COORDINATES ARE DIFFERENTIALLY CORRECTED AND BASED ON PUBLISHED NGS CONTROL STATION "WDP-5". SYSTEM: UTM ZONE: 13 NORTH DATUM: NAD 1983 (CONUS)
2. ELEVATIONS ARE BASED ON NAVD OF 1983.
3. ALL BOTTOM AND TOP HOLE LOCATIONS ARE MEASURED 90 DEGREES FROM SECTION LINE.
4. USGS QUADRANGLE MAP "SILT".
5. CURRENT SURFACE LAND USE: OPEN RANGE LANDS.
6. PDOP AT THE TIME OF LOCATION OF SURFACE WELL = 2.8



**River Valley Survey, Inc.**  
110 East 3rd. Street, Suite 207  
Rifle, Colorado 81650  
Ph: 970-625-5775

**Project:** Maves A PAD

**Field Date:** 09-10-10

**Date:** 09-30-2010

**Scale:** 1"= 1000'

**Sheet:** 1 of 1

#### Well As Drilled Location Plat Prepared For Antero Resources

**Situate In:**  
NW $\frac{1}{4}$  Section 6, T6S., R. 91 W. of the  
6th P.M., Garfield County, Colorado

