
ANADARKO PETROLEUM CORP - EBUS

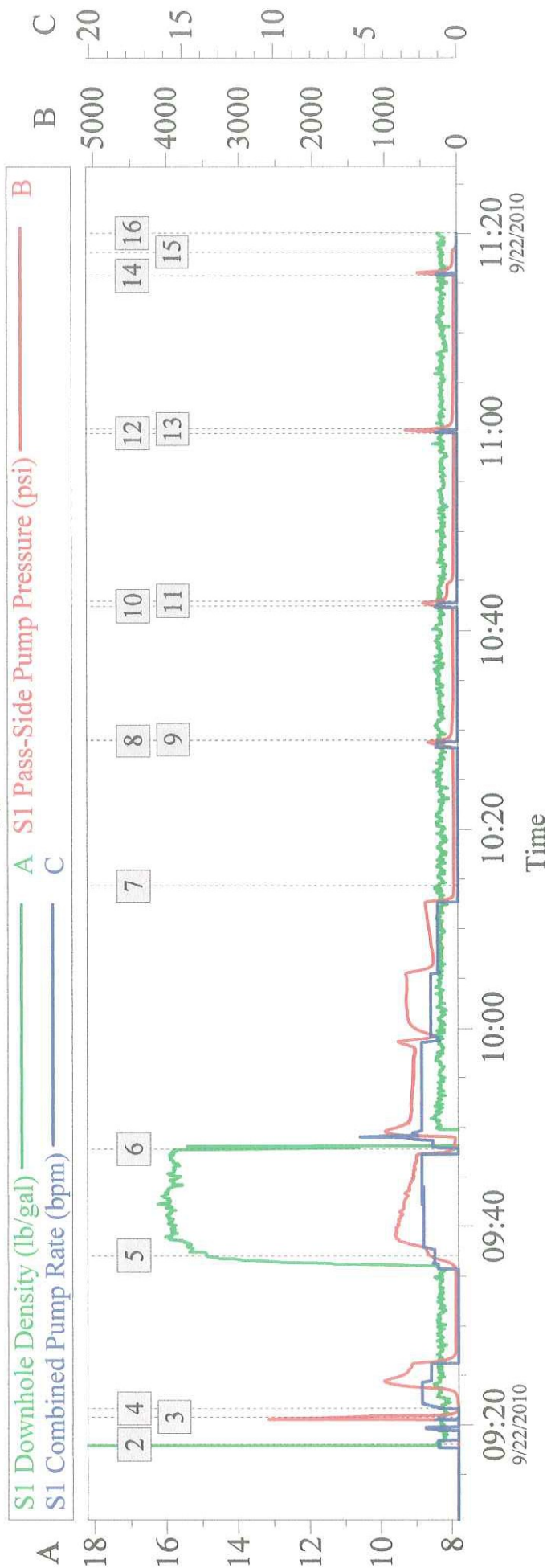
**Stromberger 43-12 #1
WATTENBERG
Weld County , Colorado**

Squeeze Hole in Casing

Job Site Documents

Customer

Job Type



Global Event Log

Intersection	SDD	SPPP	SCPR	Intersection	SDD	SPPP	SCPR
2 Start Job	09:18:01	8.332	1.304	3 Test Lines	09:20:47	8.270	1507
4 Pump Spacer 1	09:21:39	8.310	6.304	5 Pump Cement	09:37:03	14.85	397.3
6 Pump Displacement	09:47:49	13.38	46.30	7 Shutdown	10:14:17	8.320	53.30
8 Pump Displacement	10:28:56	8.330	274.2	9 Shutdown	10:29:05	8.370	170.3
10 Pump Displacement	10:42:28	8.350	264.4	11 Shutdown	10:42:58	8.320	295.2
12 Pump Displacement	10:59:53	8.230	41.30	13 Shutdown	11:00:19	8.220	361.2
14 Pump Displacement	11:15:43	8.140	39.30	15 End Job	11:18:09	8.200	54.30
16 Ending Job	11:20:05	8.280	-7.696				

Customer:	Job Date:	Sales Order #:
Well Description:	Job Type:	ADC Used:
Company Rep:	Cement Supervisor:	Elite #:

The Road to Excellence Starts with Safety

Sold To #: 300466	Ship To #: 2808799	Quote #:	Sales Order #: 7653175
Customer: ANADARKO PETROLEUM CORP - EBUS		Customer Rep: COLE, BOB	
Well Name: Stromberger		Well #: 43-12 #1	API/UWI #:
Field: WATTENBERG	City (SAP): GILCREST	County/Parish: Weld	State: Colorado
Legal Description:			
Lat:		Long:	
Contractor: ?		Rig/Platform Name/Num:	
Job Purpose: Squeeze Hole in Casing			Ticket Amount:
Well Type: Producing Well		Job Type: Squeeze Hole in Casing	
Sales Person: FLING, MATTHEW		Srv Supervisor: SIMS, DENNIS	MBU ID Emp #: 158880

Activity Description	Date/Time	Cht #	Rate bbl/min	Volume bbl		Pressure psig		Comments
				Stage	Total	Tubing	Casing	
Call Out	09/22/2010 06:00							
Arrive at Location from Service Center	09/22/2010 08:00							
Rig-Up Equipment	09/22/2010 08:10							
Pre-Job Safety Meeting	09/22/2010 09:00							
Start Job	09/22/2010 09:18							
Establish Rate	09/22/2010 09:21		1.5		3		660.0	
Pump Cement	09/22/2010 09:37		2		21		400.0	100 SKS 15.8 PREM. CEMENT
Pump Displacement	09/22/2010 09:47		2		38		300.0	
Stop Pumping	09/22/2010 10:14						100.0	
Start Squeeze	09/22/2010 10:28		0.5		0.5		400.0	
Pump Displacement	09/22/2010 10:29		0.5				500.0	
Stop Pumping	09/22/2010 10:45							
Pump Displacement	09/22/2010 10:45		0.25				550.0	
End Job	09/22/2010 11:20							

The Road to Excellence Starts with Safety

Sold To #: 300466			Ship To #: 2808799			Quote #:			Sales Order #: 7653175										
Customer: ANADARKO PETROLEUM CORP - EBUS						Customer Rep: COLE, BOB													
Well Name: Stromberger				Well #: 43-12 #1				API/UWI #:											
Field: WATTENBERG		City (SAP): GILCREST		County/Parish: Weld				State: Colorado											
Contractor: ?				Rig/Platform Name/Num:															
Job Purpose: Squeeze Hole in Casing																			
Well Type: Producing Well					Job Type: Squeeze Hole in Casing														
Sales Person: FLING, MATTHEW				Srvc Supervisor: SIMS, DENNIS			MBU ID Emp #: 158880												
Job Personnel																			
HES Emp Name		Exp Hrs	Emp #	HES Emp Name		Exp Hrs	Emp #	HES Emp Name		Exp Hrs	Emp #								
HALE, ROBERT E		4	470588	SIMS, DENNIS A		4	158880	THOMPSON, STEVEN Darrin		4	445340								
Equipment																			
HES Unit #	Distance-1 way		HES Unit #	Distance-1 way		HES Unit #	Distance-1 way		HES Unit #	Distance-1 way									
10948695	25 mile		11106651	25 mile		11341988C	25 mile												
Job Hours																			
Date	On Location Hours		Operating Hours	Date	On Location Hours		Operating Hours	Date	On Location Hours		Operating Hours								
9/22/09	4		2																
TOTAL							Total is the sum of each column separately												
Job						Job Times													
Formation Name								Date	Time	Time Zone									
Formation Depth (MD)		Top			Bottom			Called Out	22 - Sep - 2010	06:00	MST								
Form Type				BHST				On Location	22 - Sep - 2010	08:00	MST								
Job depth MD		2592. ft		Job Depth TVD		2591. ft		Job Started	22 - Sep - 2010	09:45	MST								
Water Depth				Wk Ht Above Floor		3. ft		Job Completed	22 - Sep - 2010	11:45	MST								
Perforation Depth (MD)		From	900.00 ft		To	901.00 ft		Departed Loc	22 - Sep - 2010	13:00	MST								
Well Data																			
Description		New / Used	Max pressure psig	Size in	ID in	Weight lbm/ft	Thread		Grade	Top MD ft	Bottom MD ft	Top TVD ft	Bottom TVD ft						
Production Casing		Used		4.5	4.052	10.5				.	7298.	.							
Tools and Accessories																			
Type	Size	Qty	Make	Depth	Type	Size	Qty	Make	Depth	Type	Size	Qty	Make						
Guide Shoe					Packer					Top Plug									
Float Shoe					Bridge Plug					Bottom Plug									
Float Collar					Retainer					SSR plug set									
Insert Float										Plug Container									
Stage Tool										Centralizers									
Miscellaneous Materials																			
Gelling Agt				Conc		Surfactant				Conc			Acid Type			Qty		Conc	%
Treatment Fld				Conc		Inhibitor				Conc			Sand Type			Size		Qty	
Fluid Data																			
Stage/Plug #: 1																			
Fluid #	Stage Type		Fluid Name				Qty	Qty uom	Mixing Density lbm/gal	Yield ft3/sk	Mix Fluid Gal/sk	Rate bbl/min	Total Mix Fluid Gal/sk						

Stage/Plug #: 1									
Fluid #	Stage Type	Fluid Name	Qty	Qty uom	Mixing Density lbm/gal	Yield ft ³ /sk	Mix Fluid Gal/sk	Rate bbl/min	Total Mix Fluid Gal/sk
1	INJECTION FLUID		5.00	bbl	8.3			2.0	
2	15.8 # Premium	CMT - PREMIUM - CLASS G, 94 LB SK (100003685)	100.0	sacks	15.8	1.17	4.98		4.98
	94 lbm	CMT - PREMIUM - CLASS G REG OR TYPE V, BULK (100003685)							
	2 %	CALCIUM CHLORIDE, PELLET, 50 LB (101509387)							
	4.98 Gal	FRESH WATER							
3	FRESH WATER DISPLACEMENT		40.00	bbl	8.33			2.0	
Calculated Values		Pressures		Volumes					
Displacement		Shut In: Instant		Lost Returns		Cement Slurry		Pad	
Top Of Cement		5 Min		Cement Returns		Actual Displacement		Treatment	
Frac Gradient		15 Min		Spacers		Load and Breakdown		Total Job	
Rates									
Circulating		Mixing		Displacement		Avg. Job			
Cement Left In Pipe	Amount	66 ft	Reason	Shoe Joint					
Frac Ring # 1 @	ID	Frac ring # 2 @	ID	Frac Ring # 3 @	ID	Frac Ring # 4 @	ID		
The Information Stated Herein Is Correct				Customer Representative Signature					