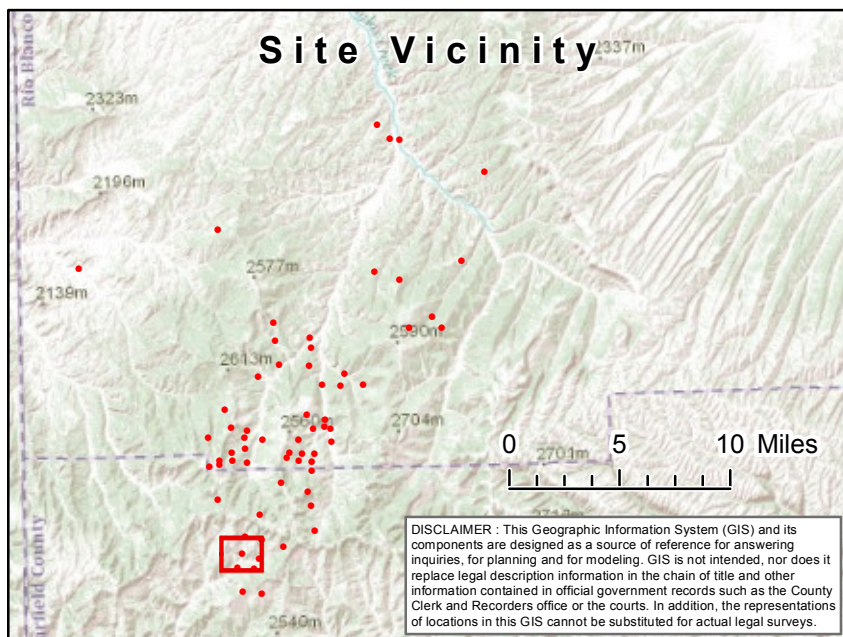


API #: 05-045-06408	Land Type: Rangeland	Receptor Name Unnamed Tributary, East Branch, West Creek
Legal: NWSE, Sec. 29, T5SR102W	Soil Type: Loam	Receptor Distance: 212 Feet
Sensitive Area (Y/N): Y		Receptor Type: Intermittent/Ephemeral



Aerial Site Detail Map

Location:
7715 DOUGLAS PASS UNIT (05-045-06408)
EnCana Oil and Gas (USA) Inc.

Legend

- Well Pad
- Roads
- PLSS**
 - Township
 - Section
 - CO Headwaters-Plateau Watershed Boundary
 - Lower White River Watershed Boundary
- Hydrography**
 - Gauging Station
 - Spring/Seep
 - + Water Intake/Outflow
 - Waterfall
 - Well
 - Lake/Pond
 - Perennial Stream
 - Intermittent/Ephemeral Stream
 - Ditch/Canal/Aqueduct
 - Stream Connector
 - Artificial Flow Path
 - 500' Hydrography Buffer



0 250 500 1,000 Feet

