

HALLIBURTON

Gamma Ray C.C.L.
Cement Bond V.D.L.

Company Noble Energy Inc.
Well Wells Ranch USX AA 35-06
Field Wattenberg
County Weld State Colorado

Company Noble Energy Inc.
Well Wells Ranch USX AA 35-06
Field Wattenberg
County Weld State Colorado
API No.: 05-123-25881-00 Serv #: 5955758
Location: 1979' FNL & 2026' FWL
SE SW Other Services

Sec: 35 Twp: 6N Rge: 63W

Permanent Datum GL Elevation 4765
Log Measured From KB 13 Ft. above perm. datum
Drilling Measured From KB Elevation
K.B. 4778
D.F. 4778
G.L. 4765

Date @ Time Logged June 13, 2008
Run No. One
Depth - Driller 6896
Depth - Logger 6815
Bottom - Logged Interval 6813
Top - Log Interval 1032
Max. Recorded Temp. NOT RECORDED
CEMENTING DATA Surface Protection String Production String Liner

Date / Time Cemented
Primary / Squeeze
Expected Compressive Strength
Cement Volume
Cement Type / Weight
Formulation
Mud Type / Mud Wgt.

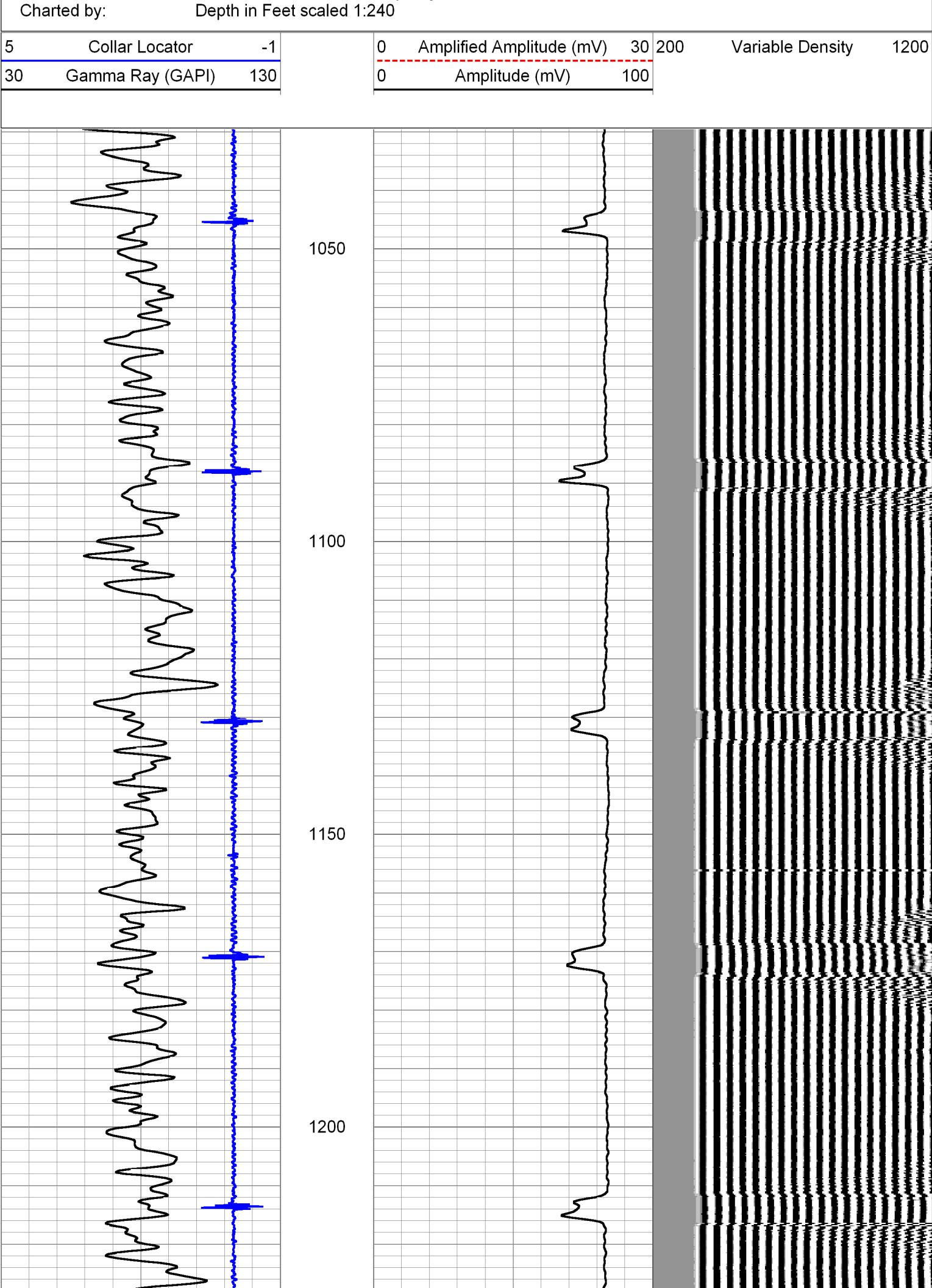
psi@ hrs psi@ hrs psi@ hrs psi@ hrs

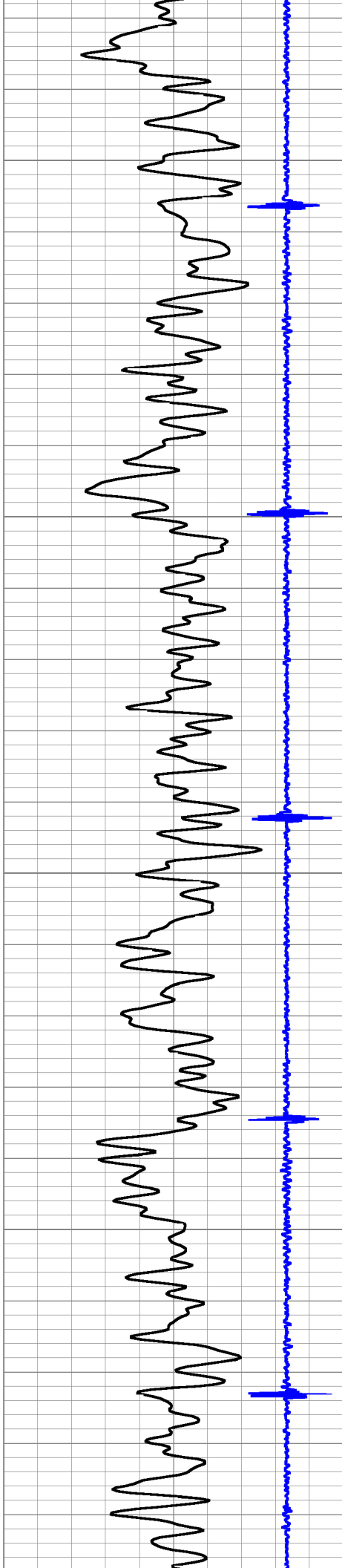
Run Number Bit From To Size Weight From To
4.5 11.6 TD Surface

Comments

Corrected uphole 4 ft to correlate to PSI openhole
dated June 6, 2008

Database File: wells ranch usx aa 35-06.db
Dataset Pathname: pass2
Presentation Format: cbldig
Dataset Creation: Fri Jun 13 15:15:41 2008 by Log Halliburton Casedho



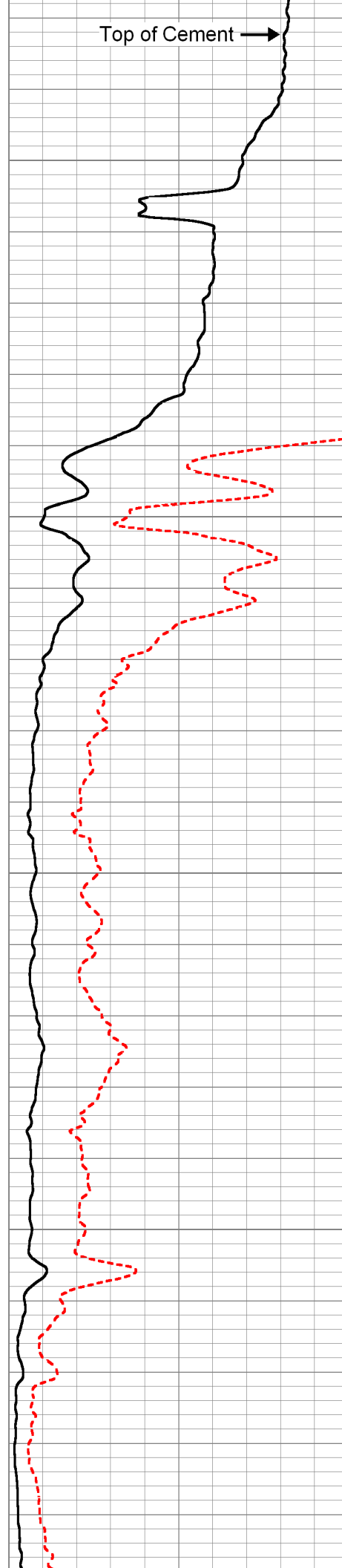


1250

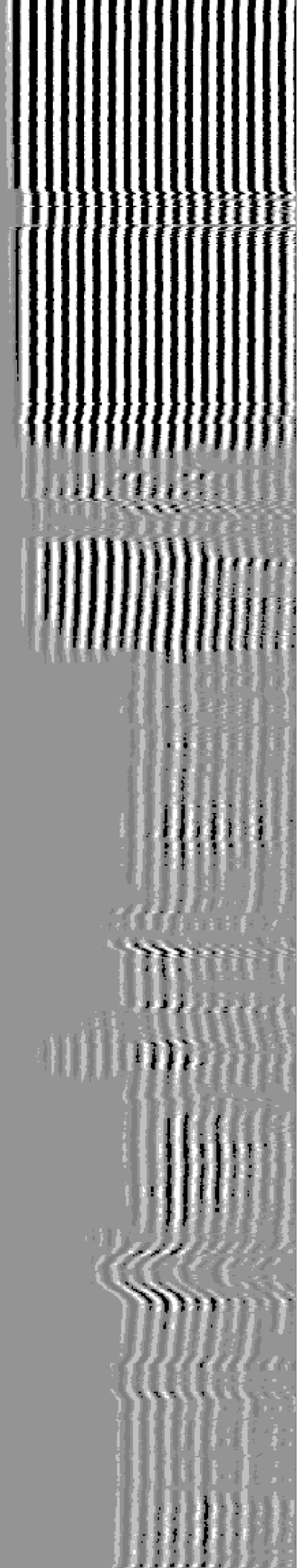
1300

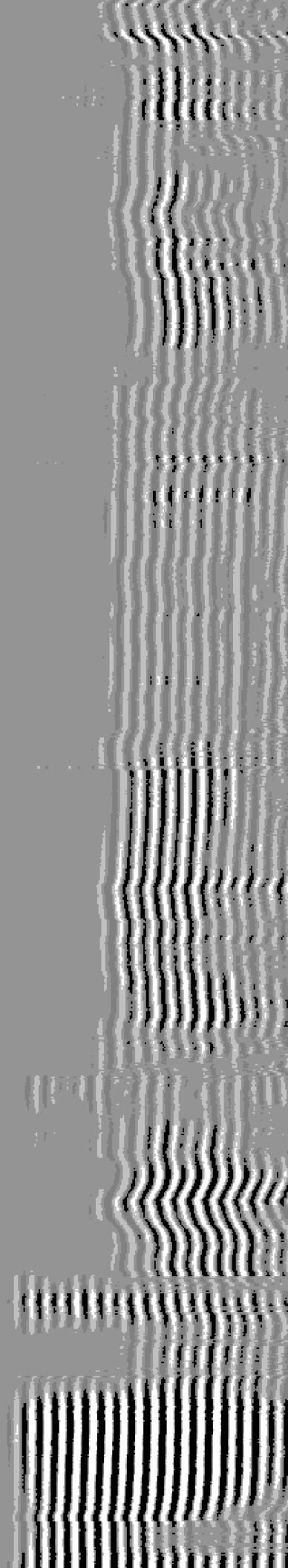
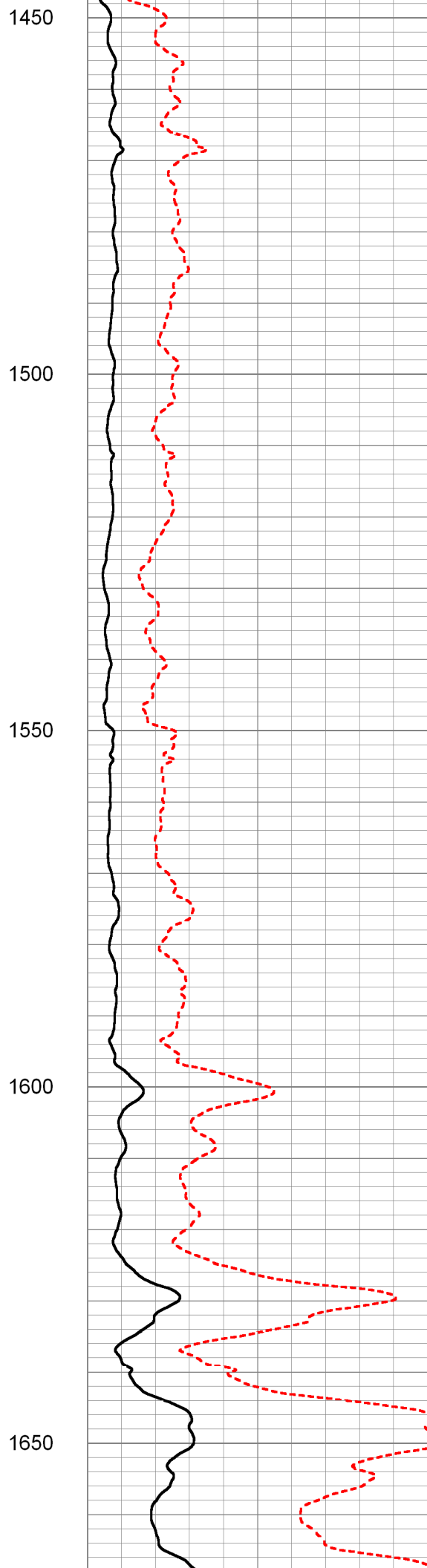
1350

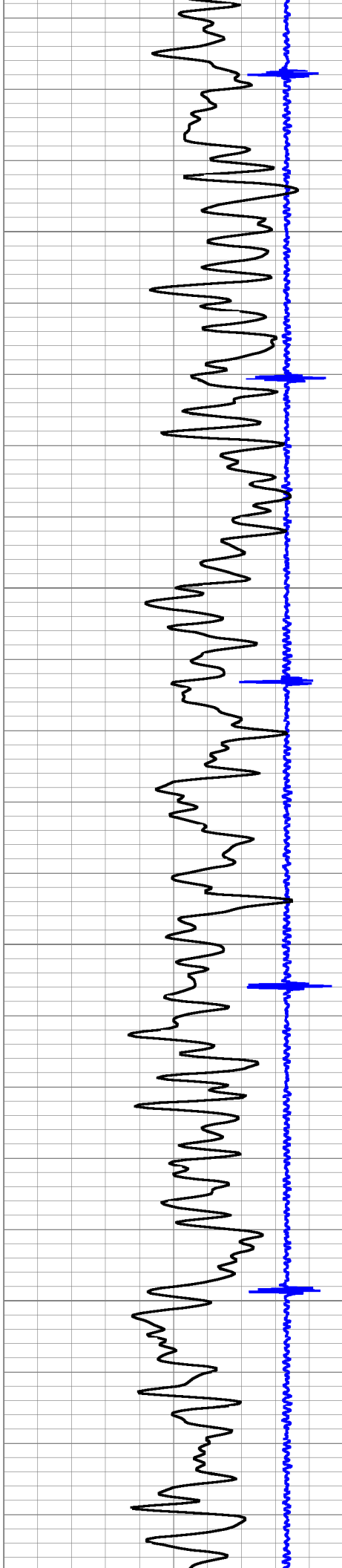
1400



Top of Cement →





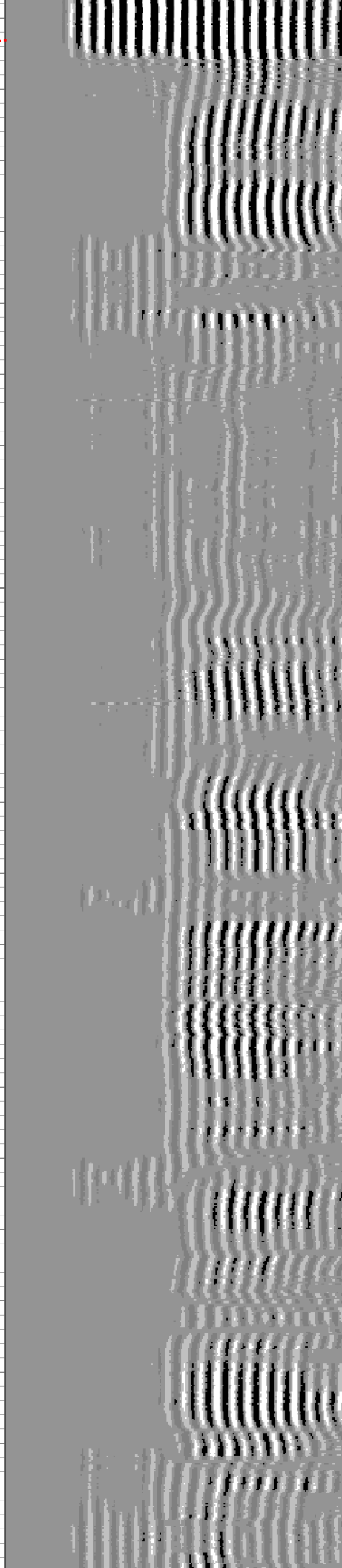
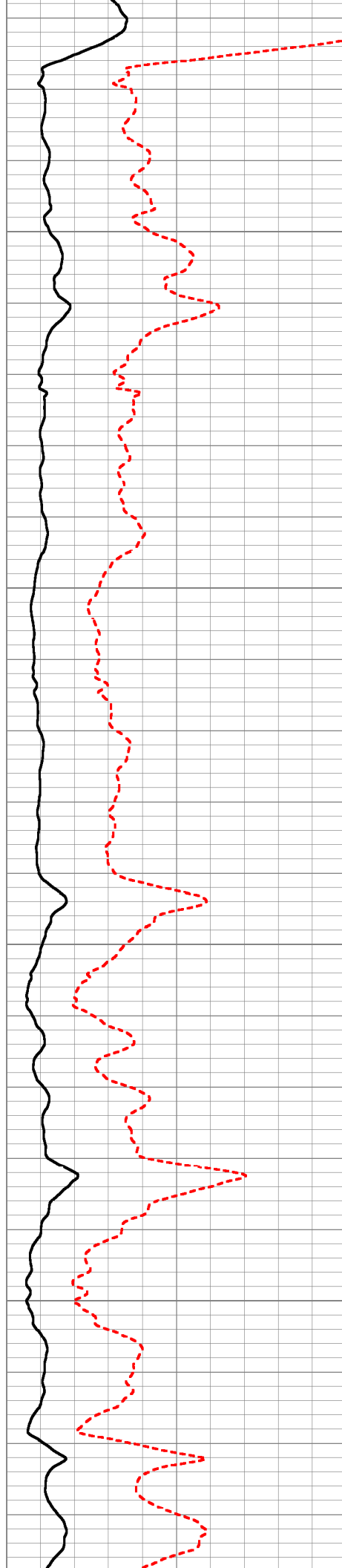


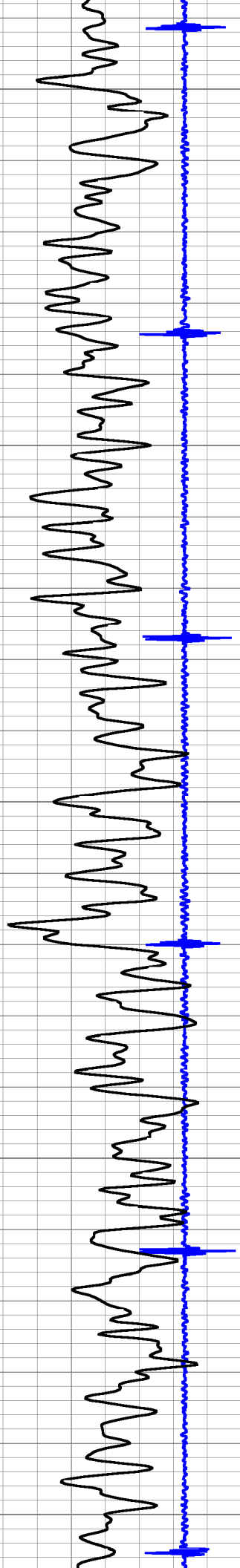
1700

1750

1800

1850





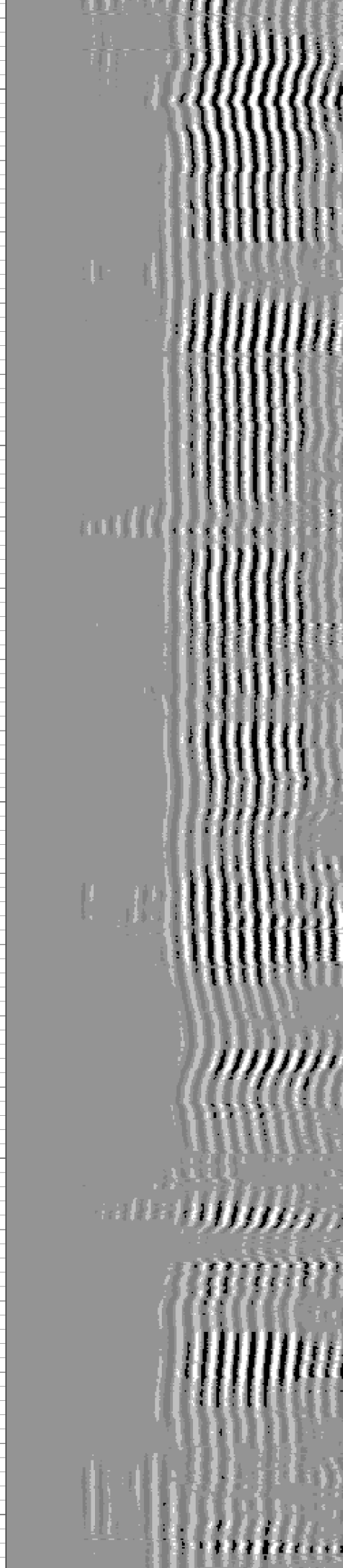
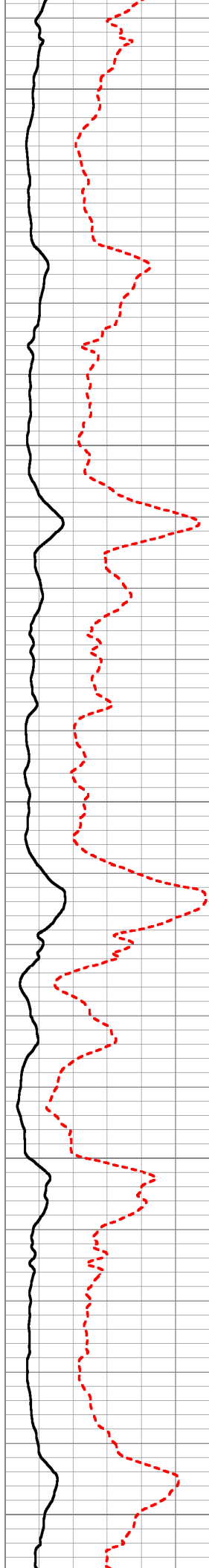
1900

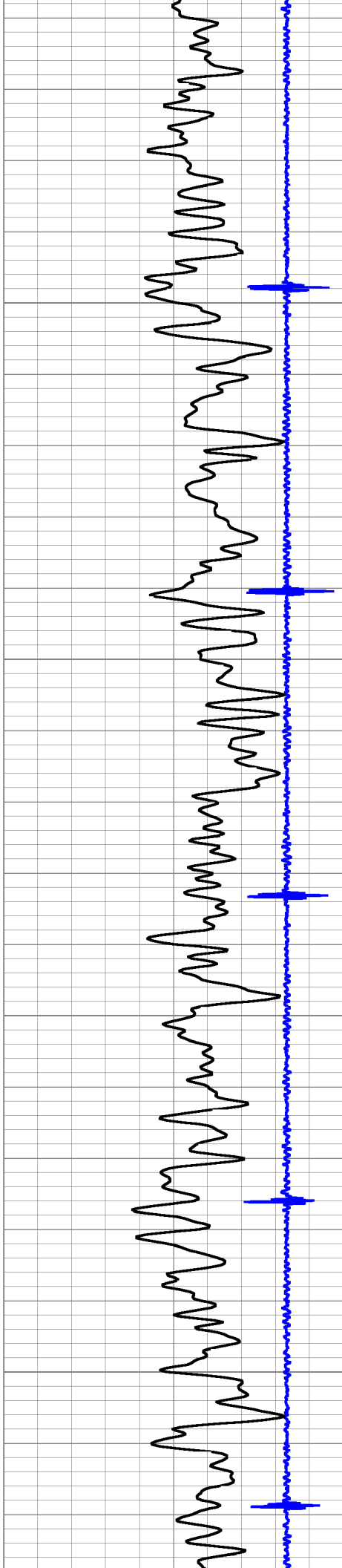
1950

2000

2050

2100



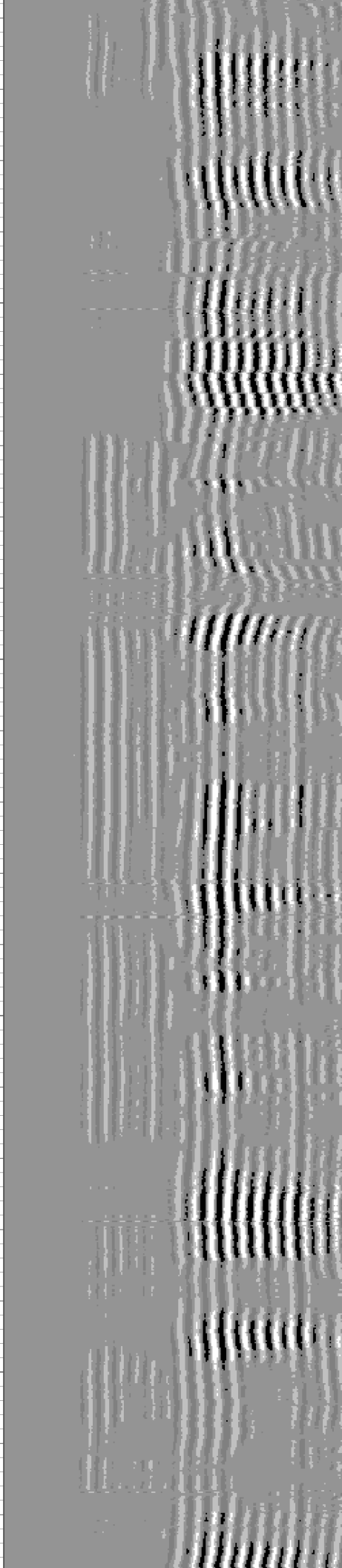
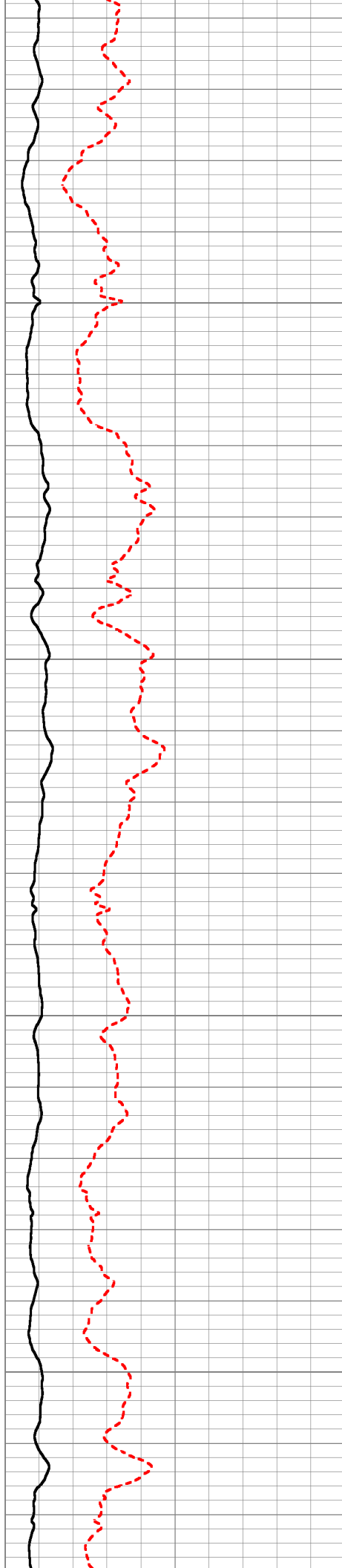


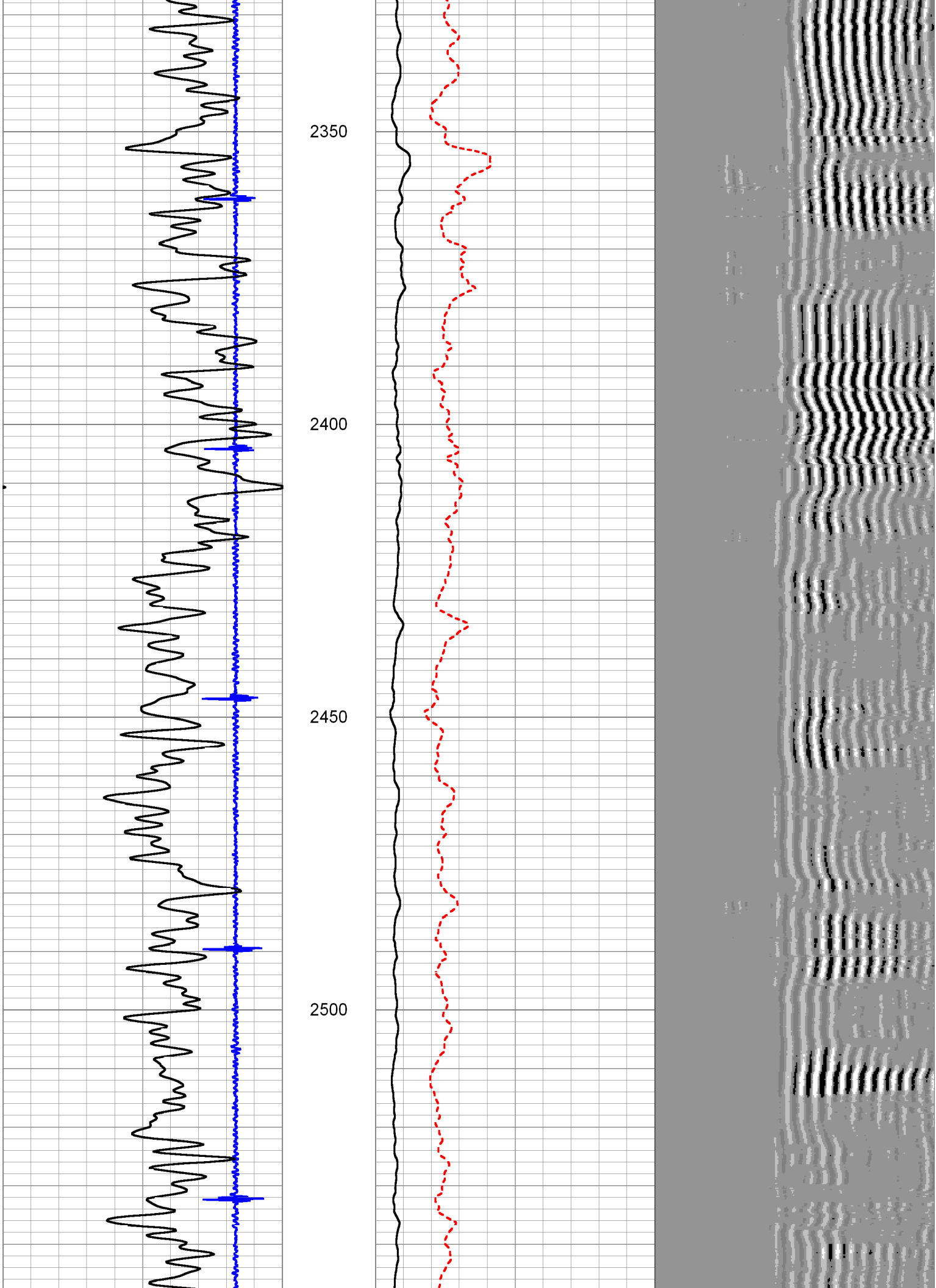
2150

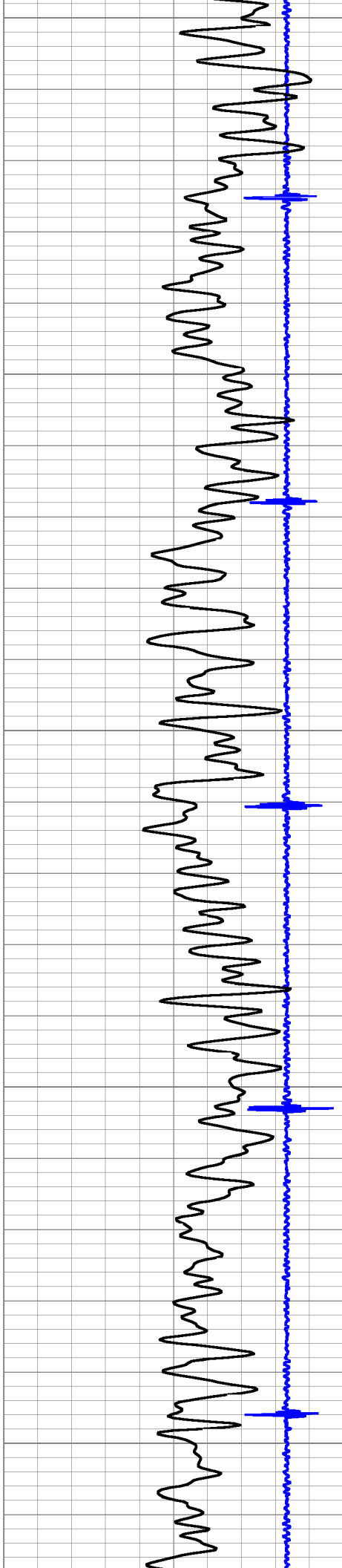
2200

2250

2300







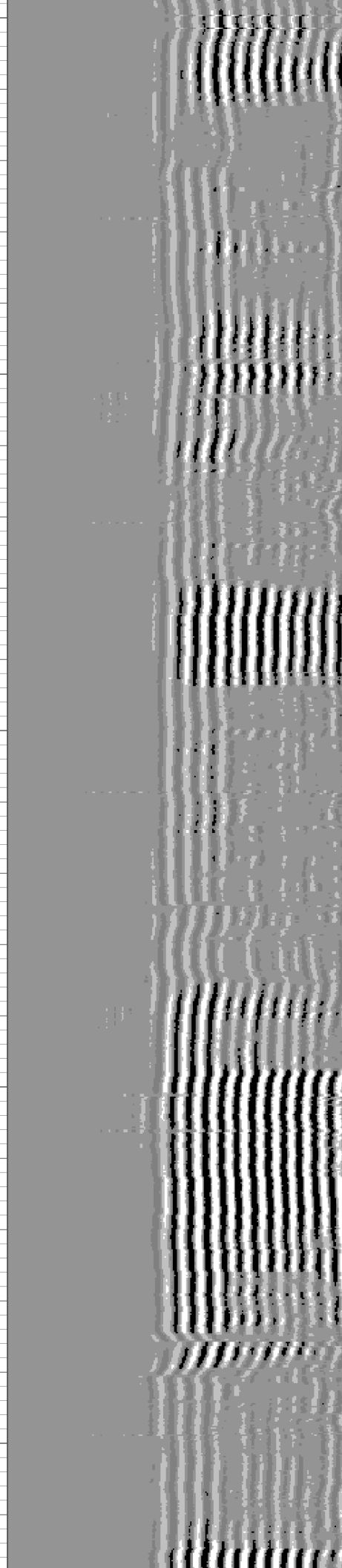
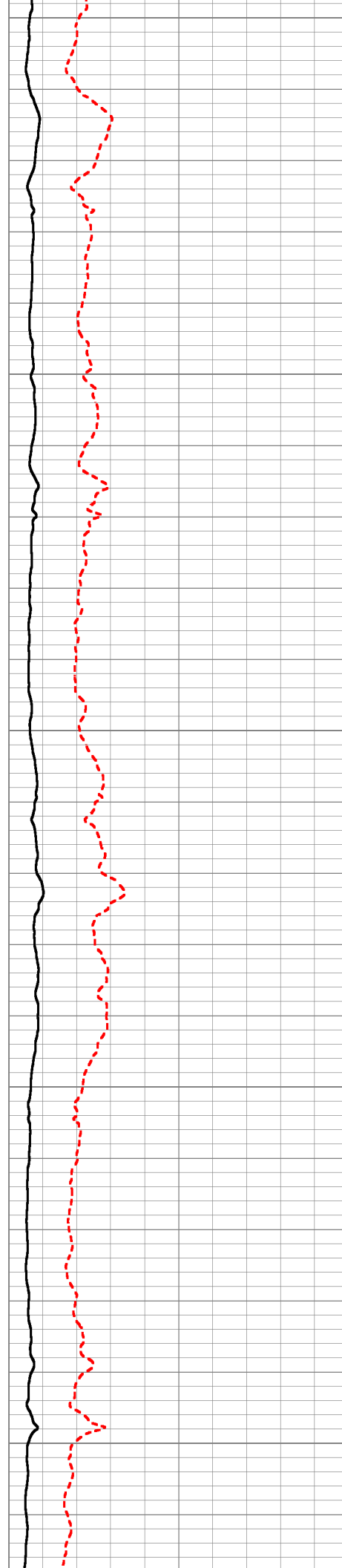
2550

2600

2650

2700

2750



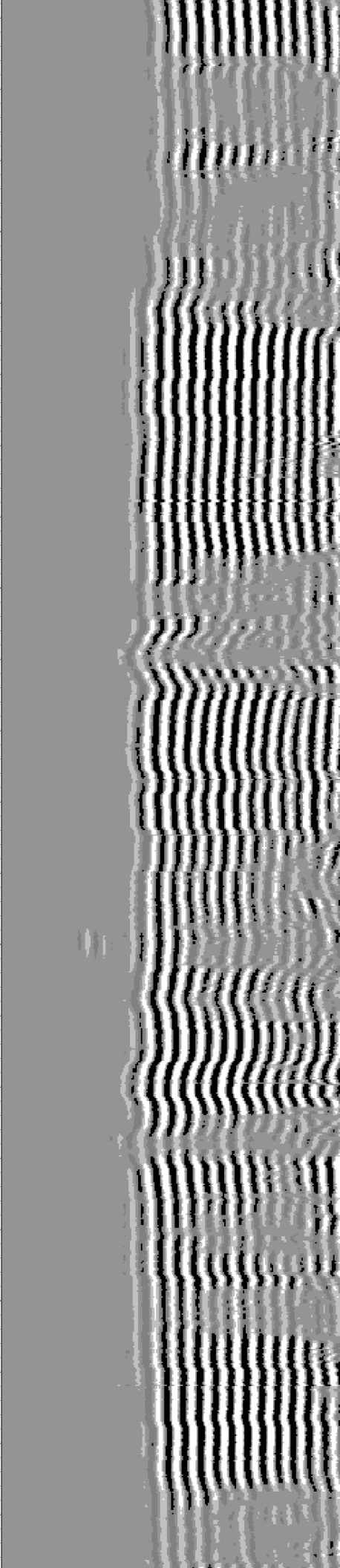
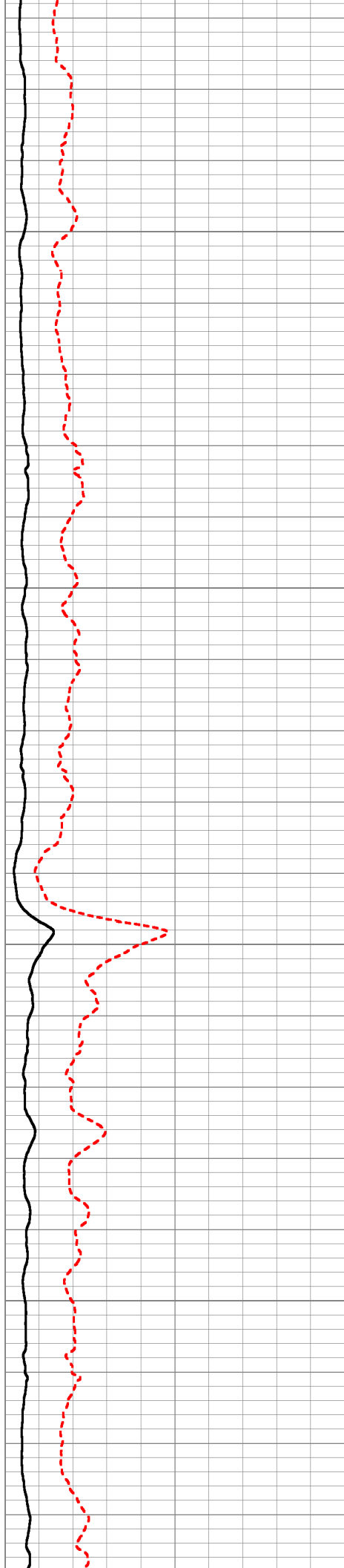


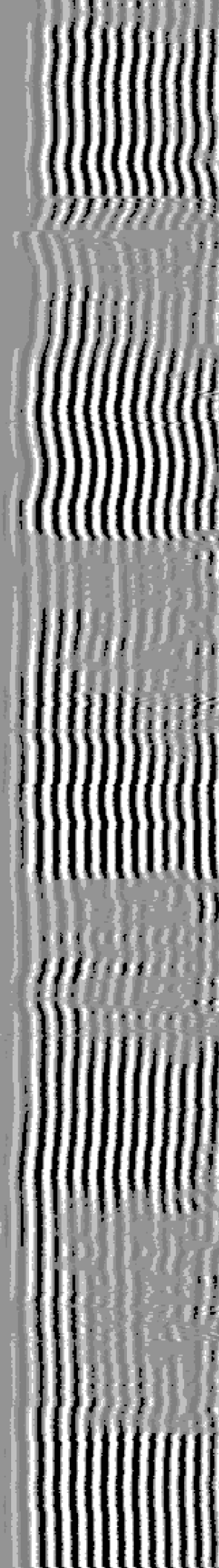
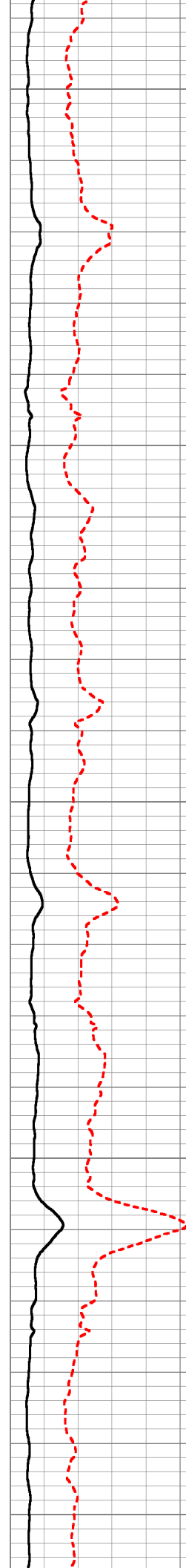
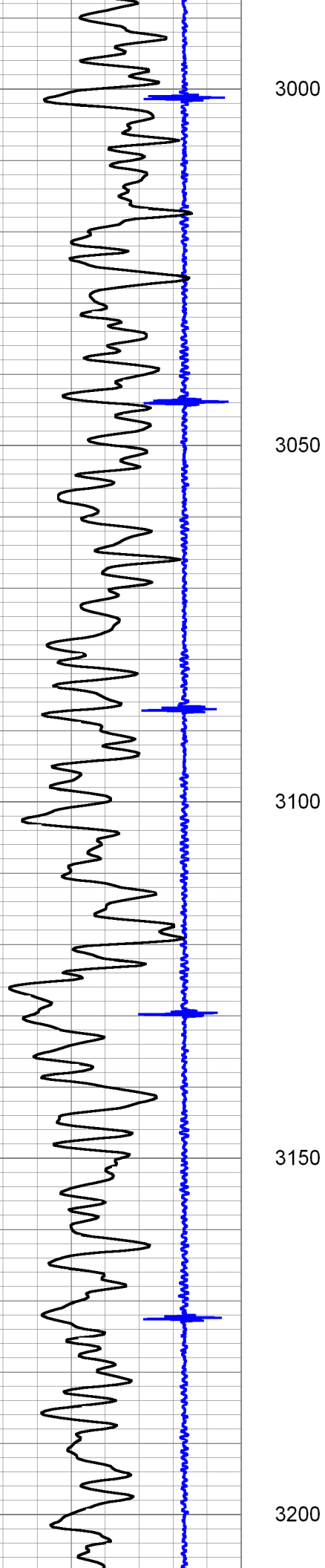
2800

2850

2900

2950





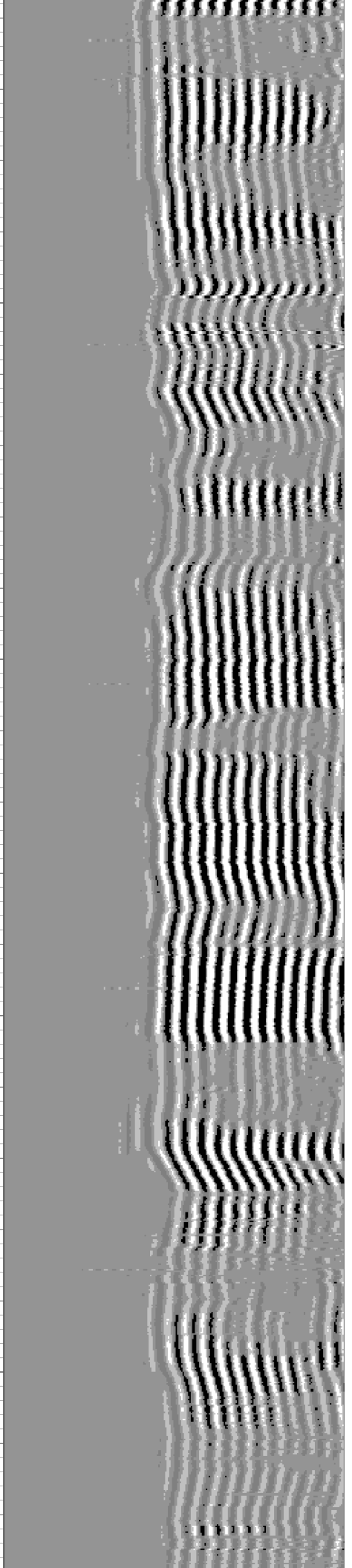
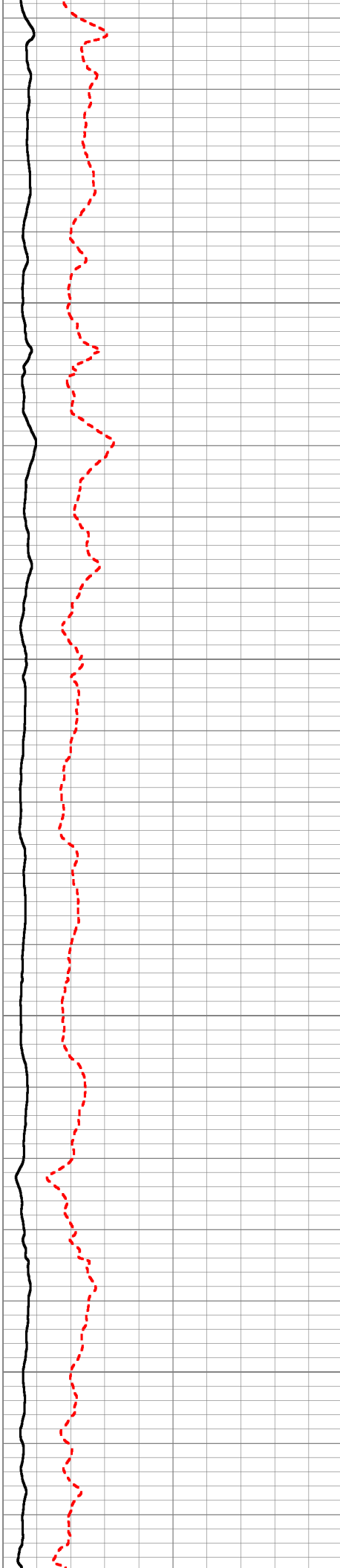


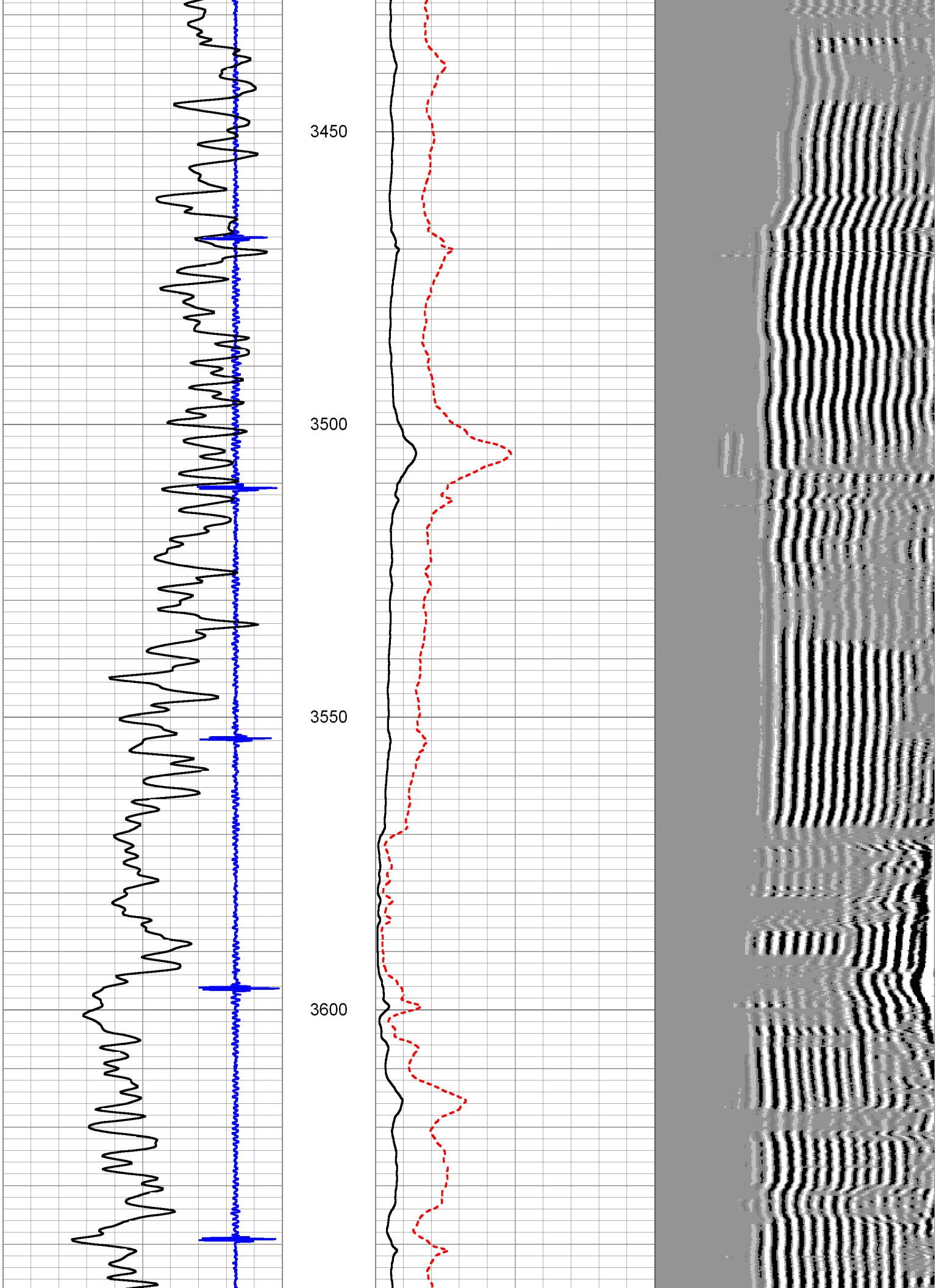
3250

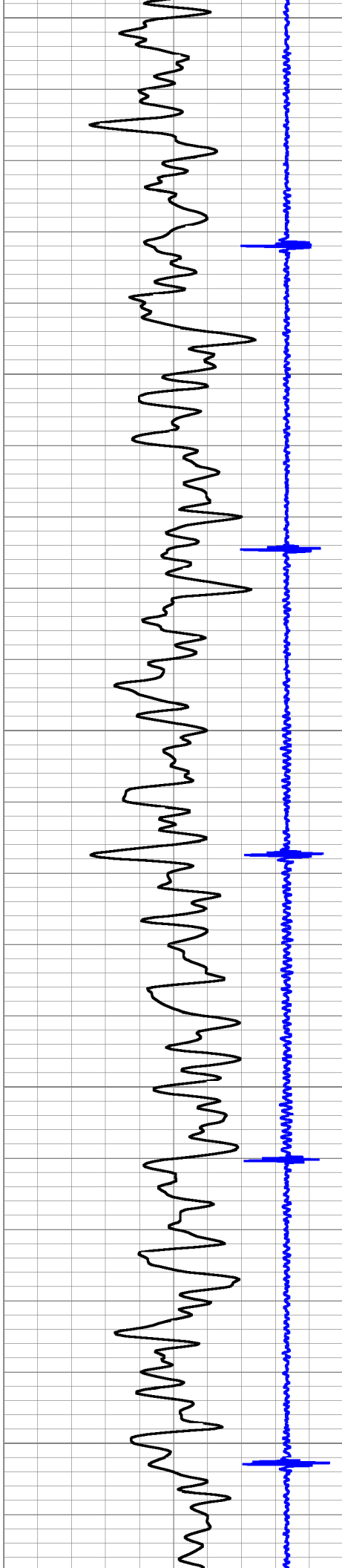
3300

3350

3400







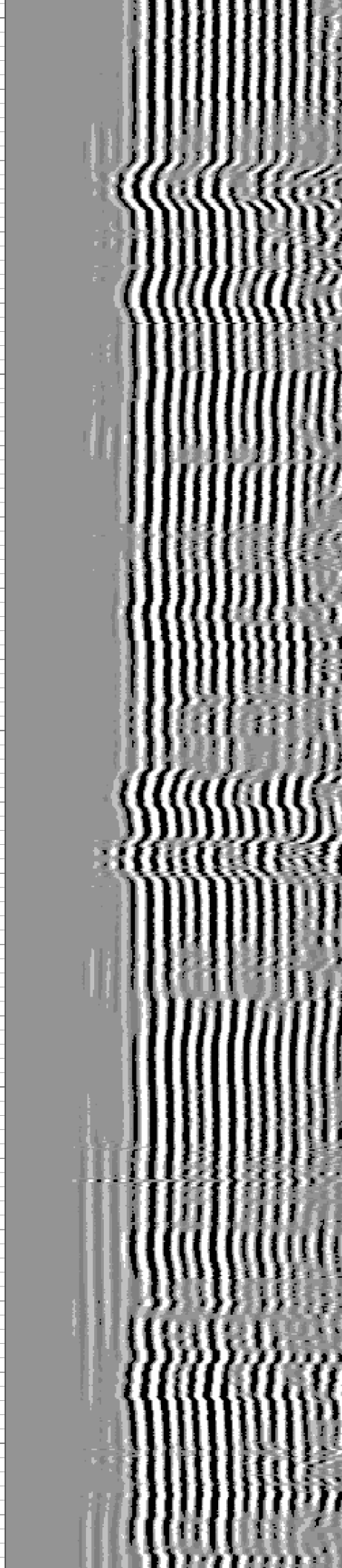
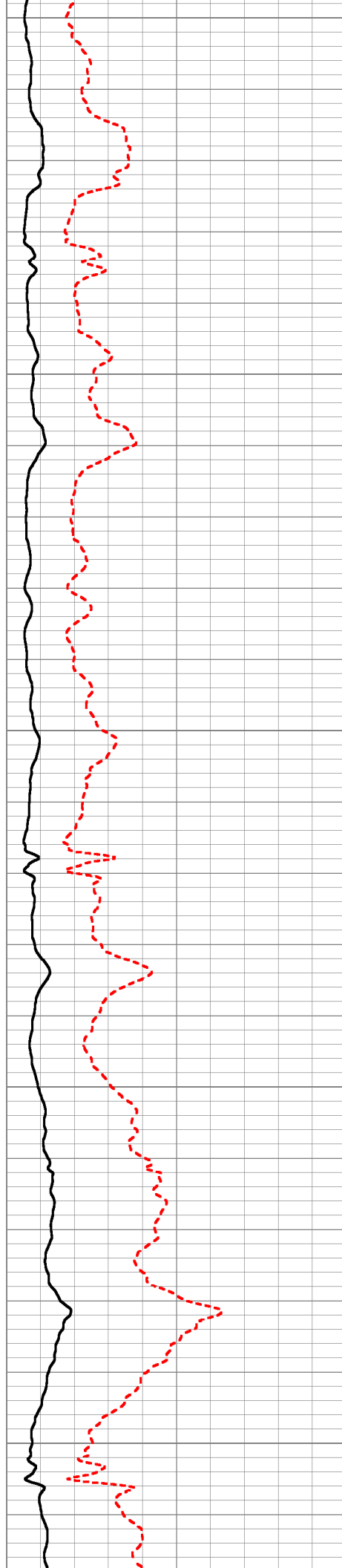
3650

3700

3750

3800

3850



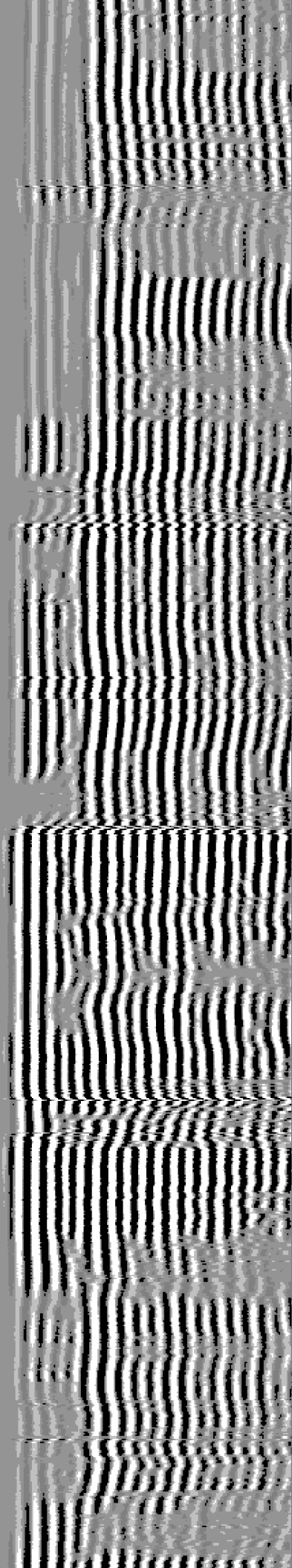
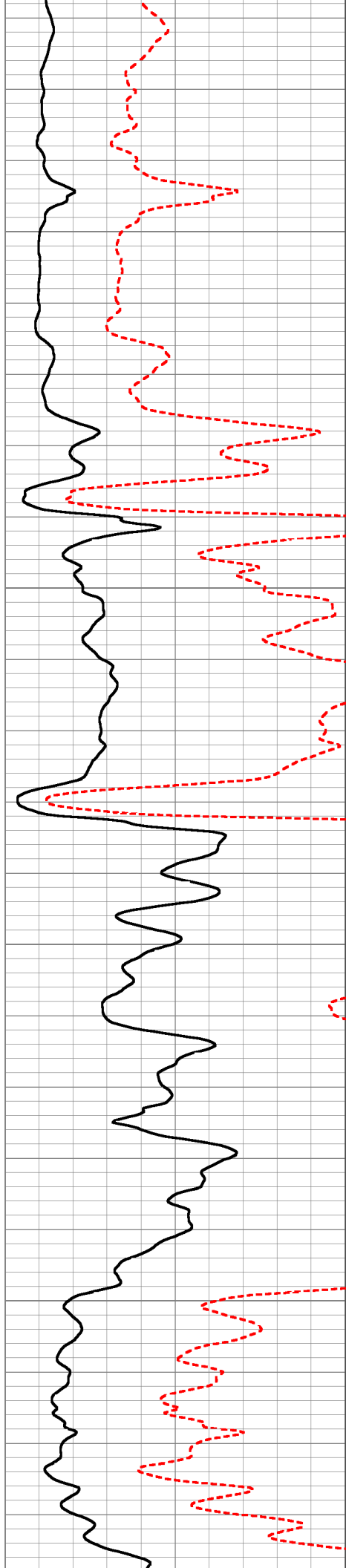


3900

3950

4000

4050





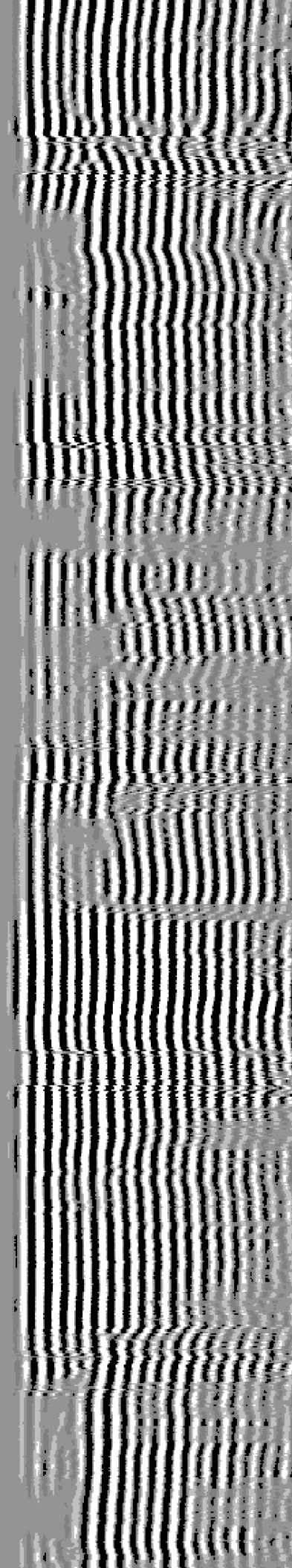
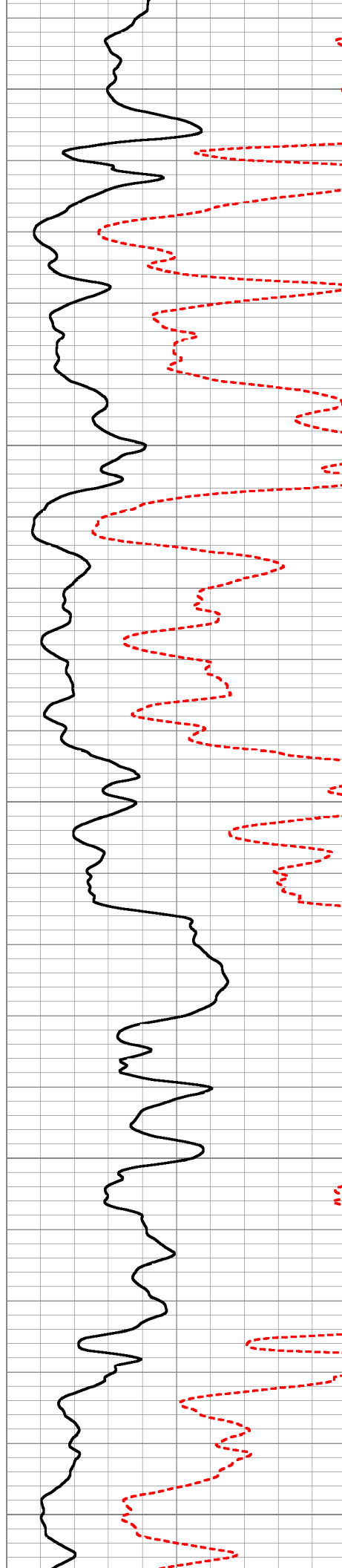
4100

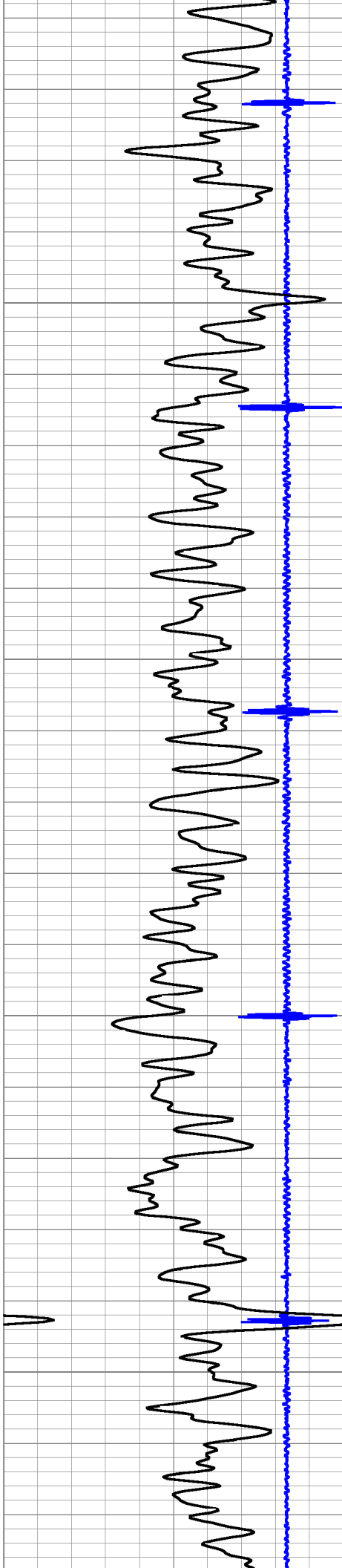
4150

4200

4250

4300



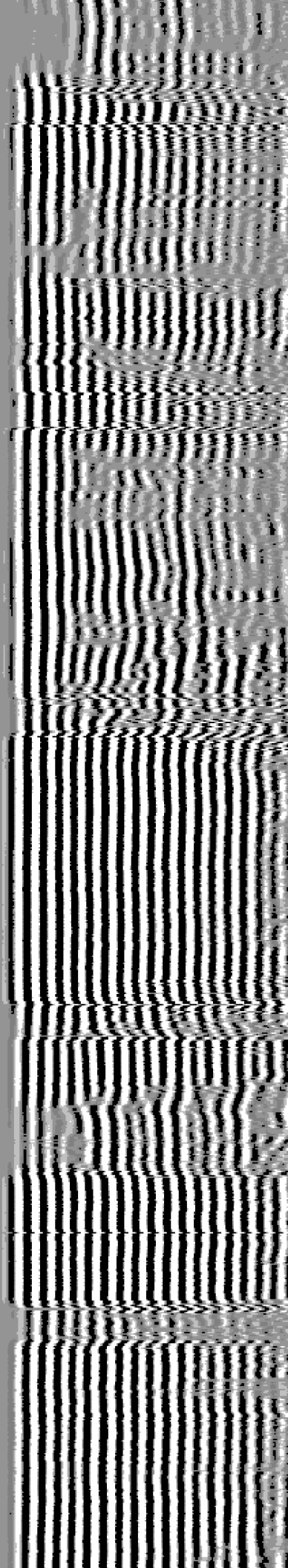
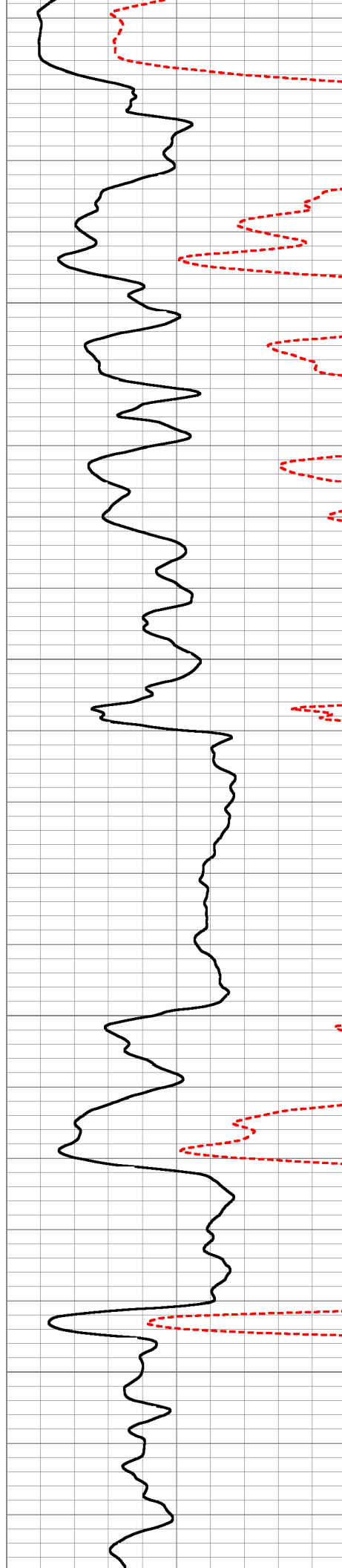


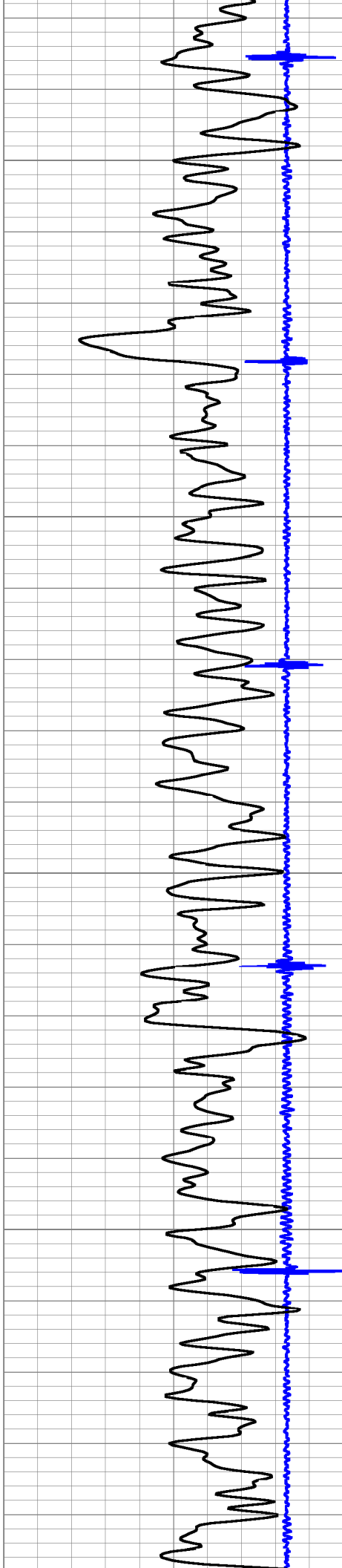
4350

4400

4450

4500



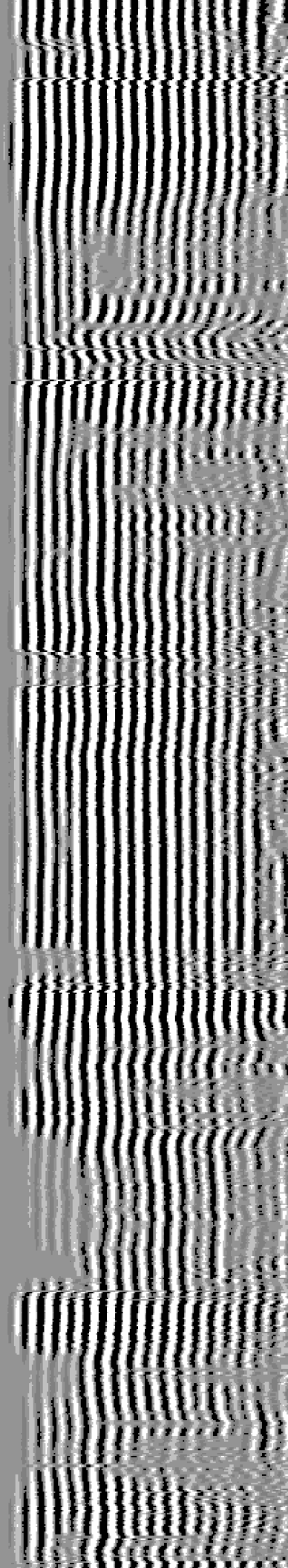
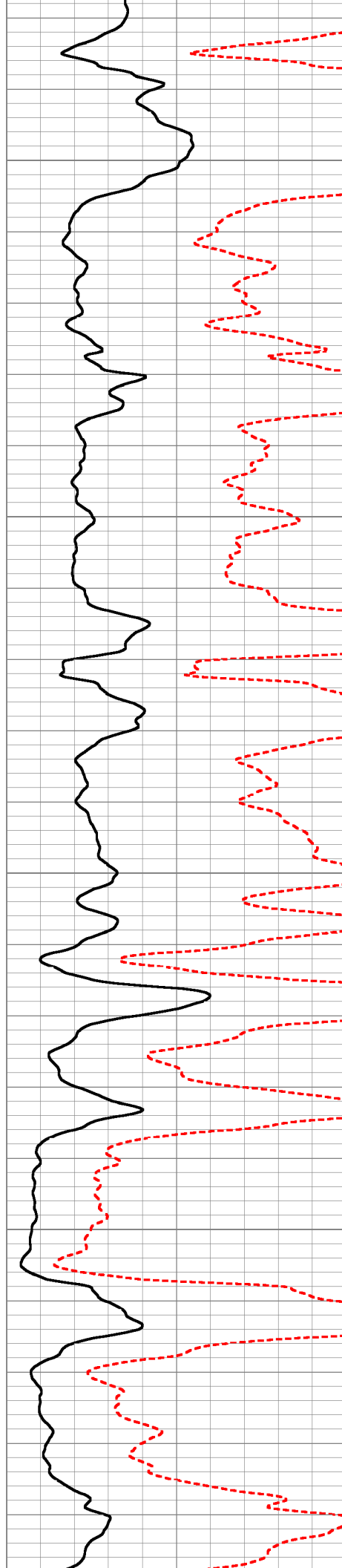


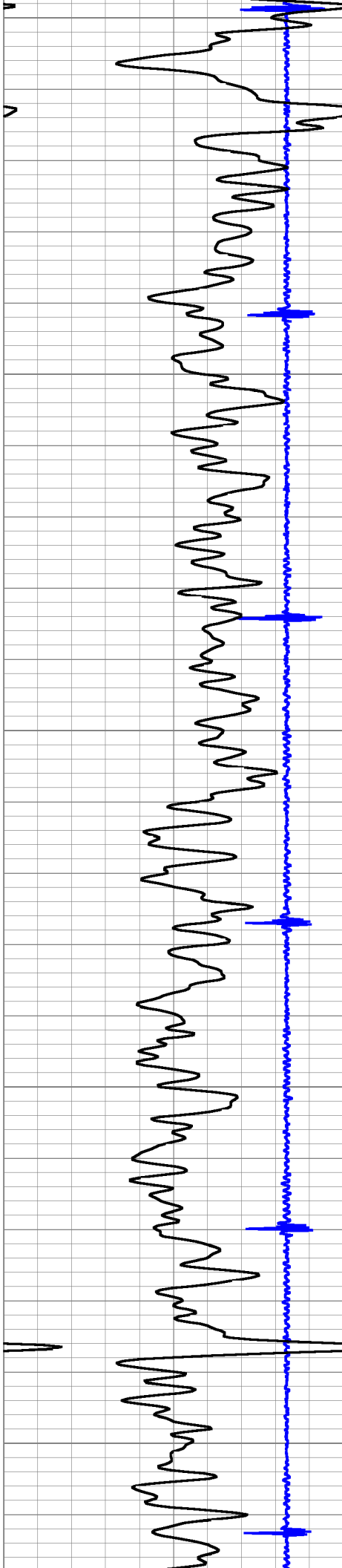
4550

4600

4650

4700





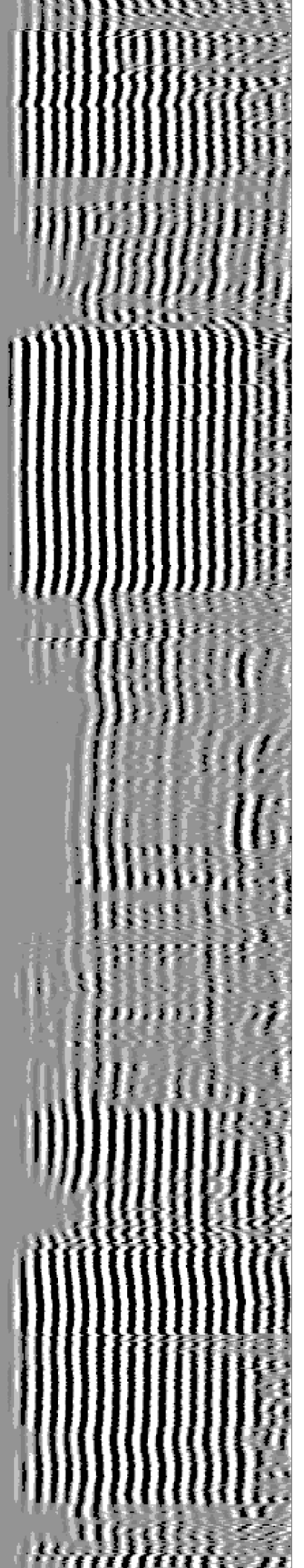
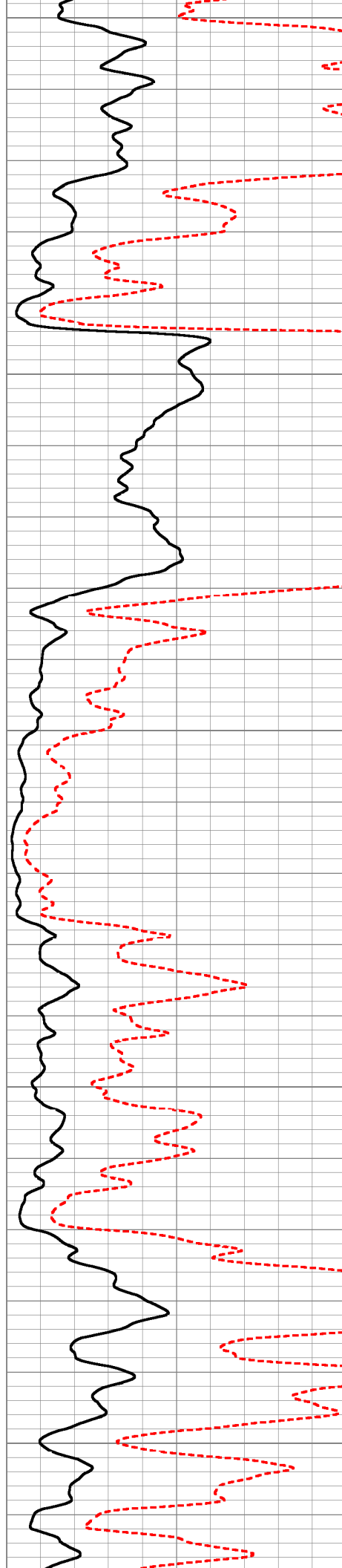
4750

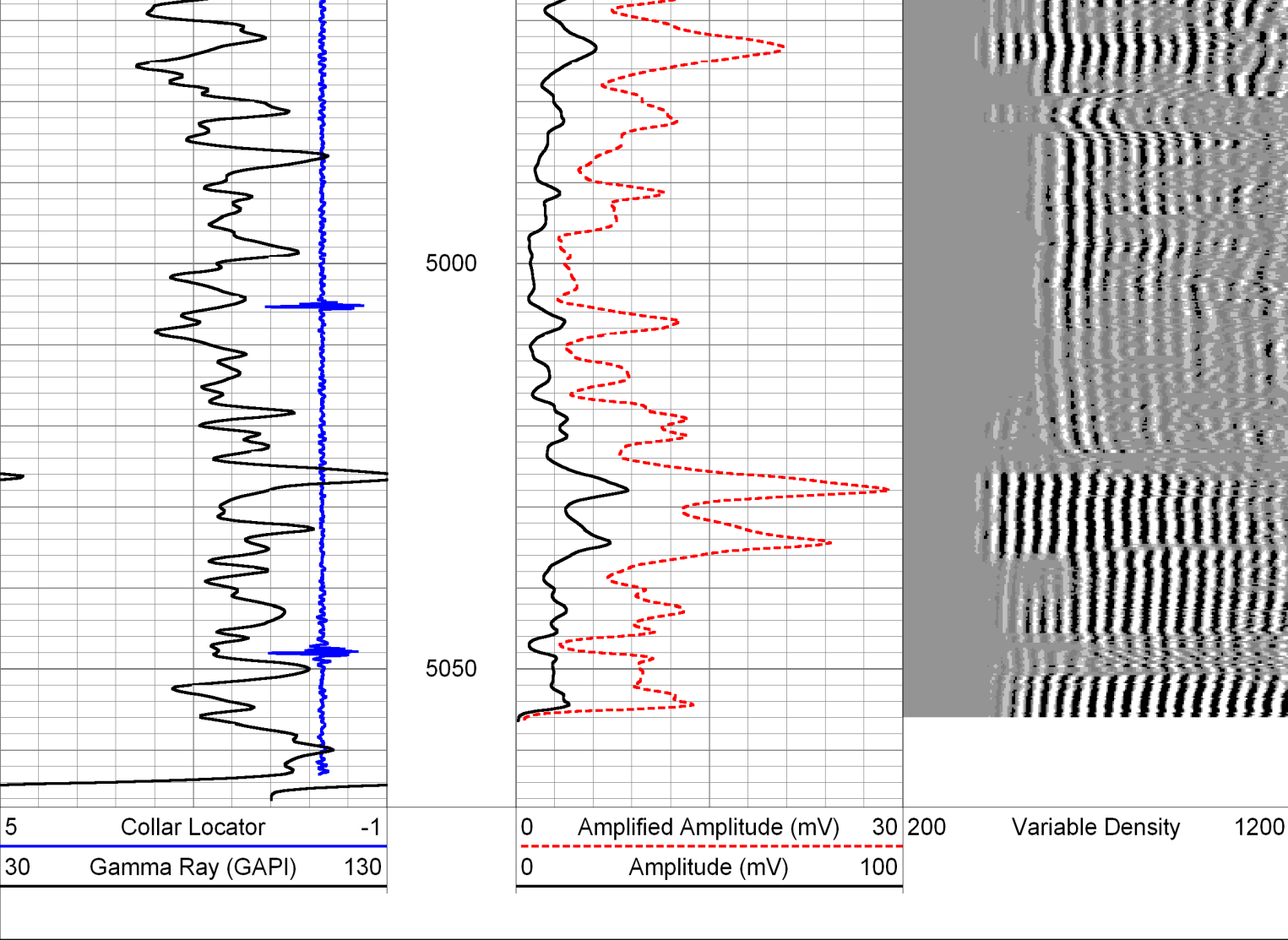
4800

4850

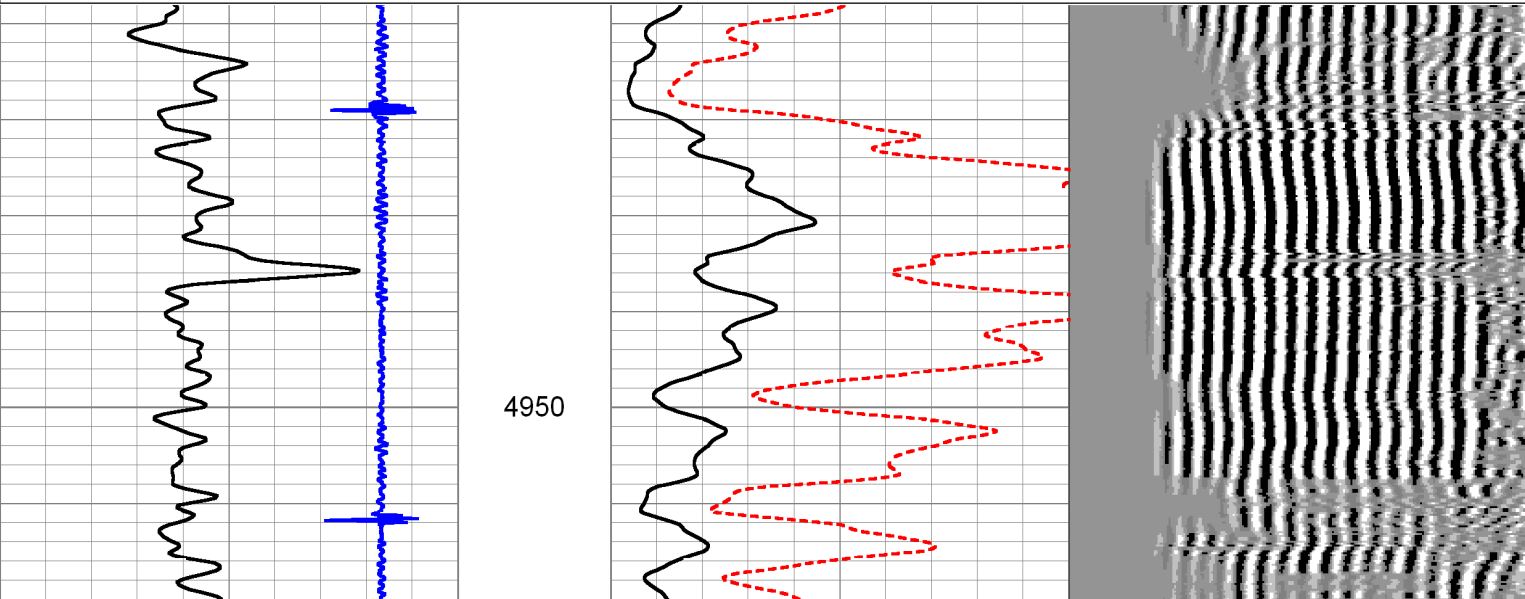
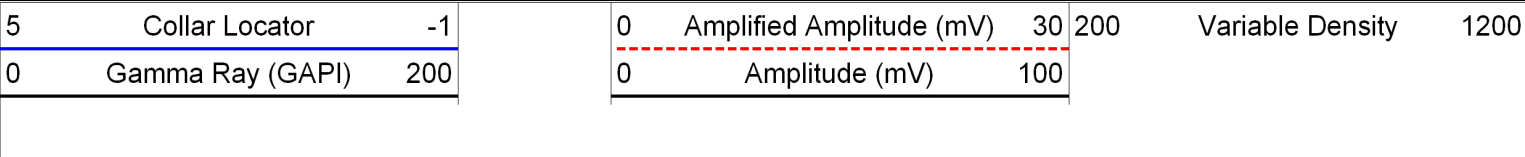
4900

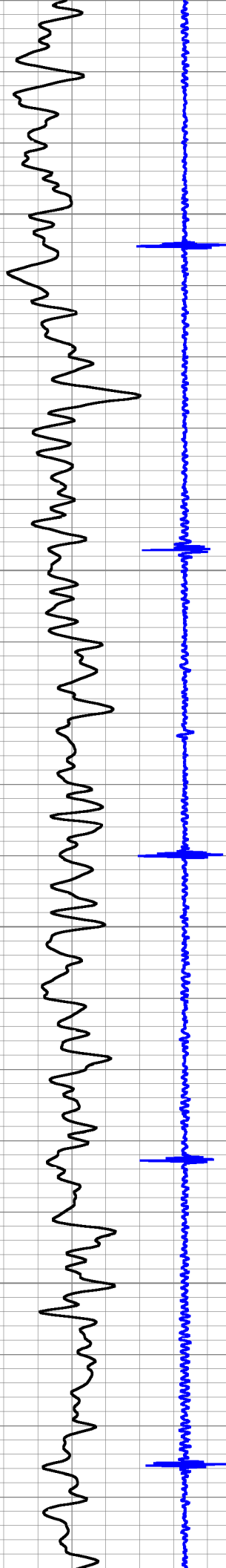
4950





Database File: wells ranch usx aa 35-06.db
Dataset Pathname: pass1
Presentation Format: cbldig
Dataset Creation: Fri Jun 13 14:54:44 2008 by Log Halliburton Casedho
Charted by: Depth in Feet scaled 1:240



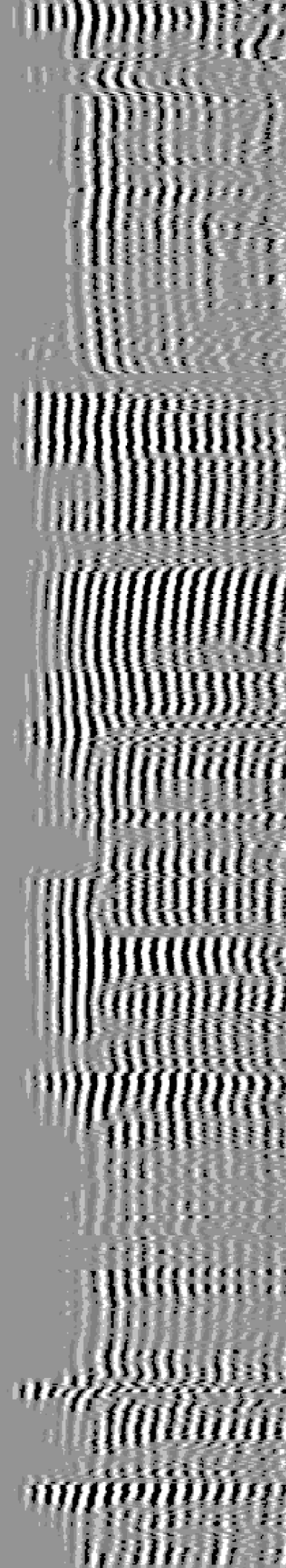
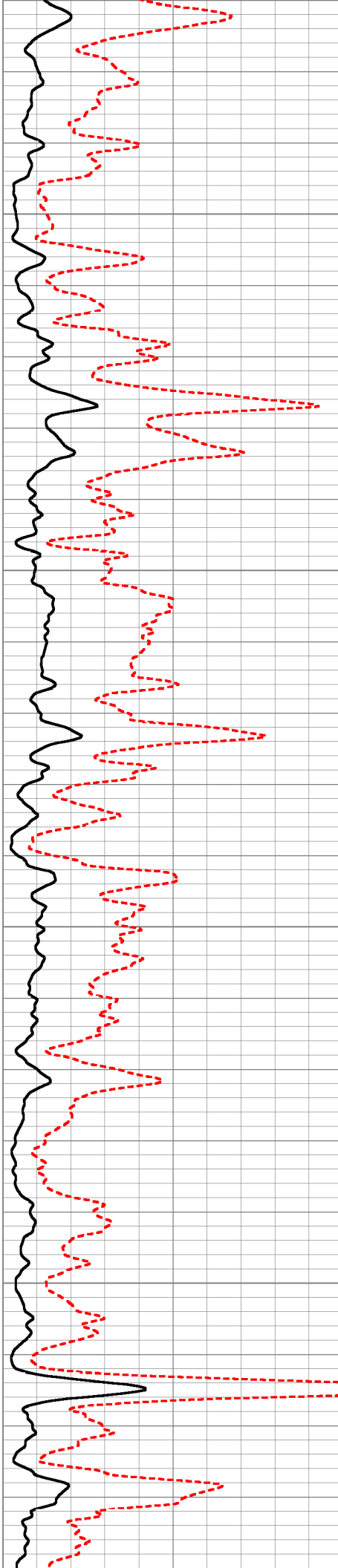


5000

5050

5100

5150





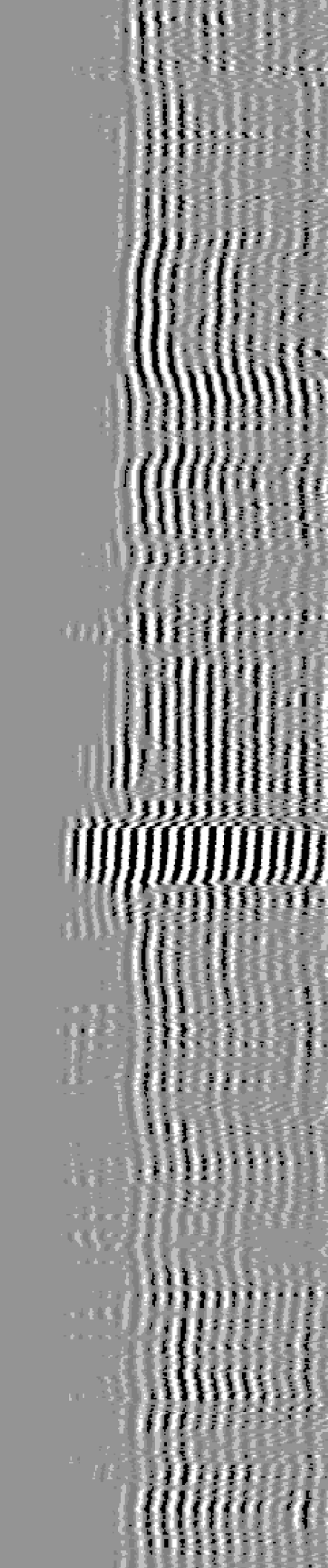
5200

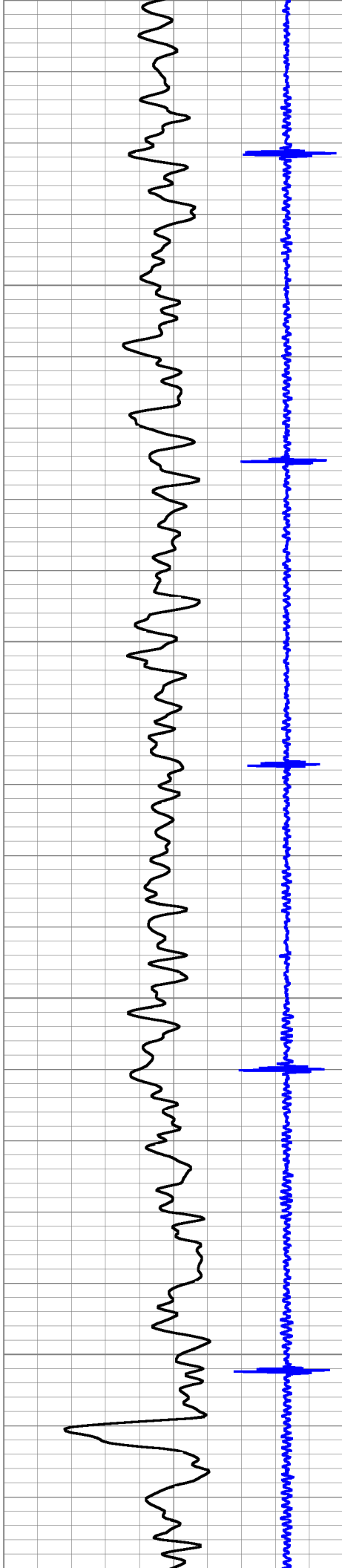
5250

5300

5350

5400



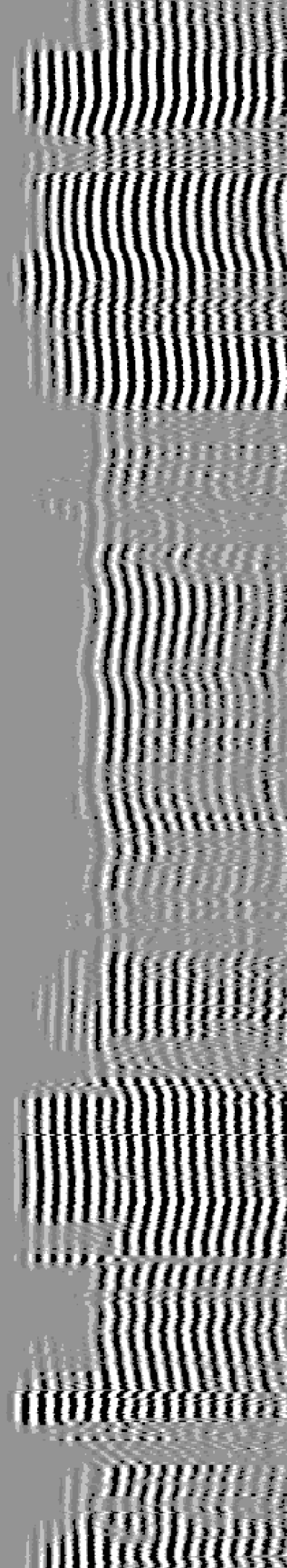
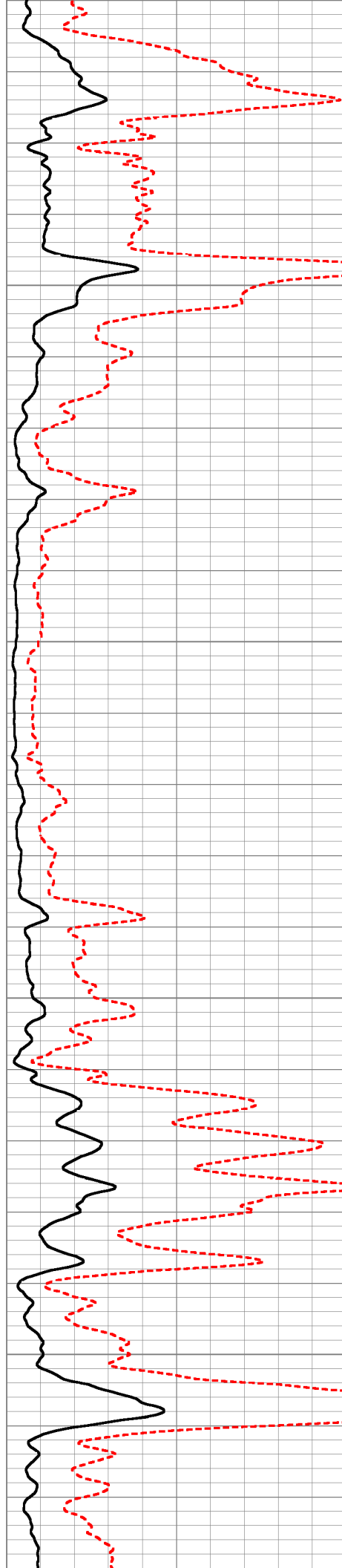


5450

5500

5550

5600





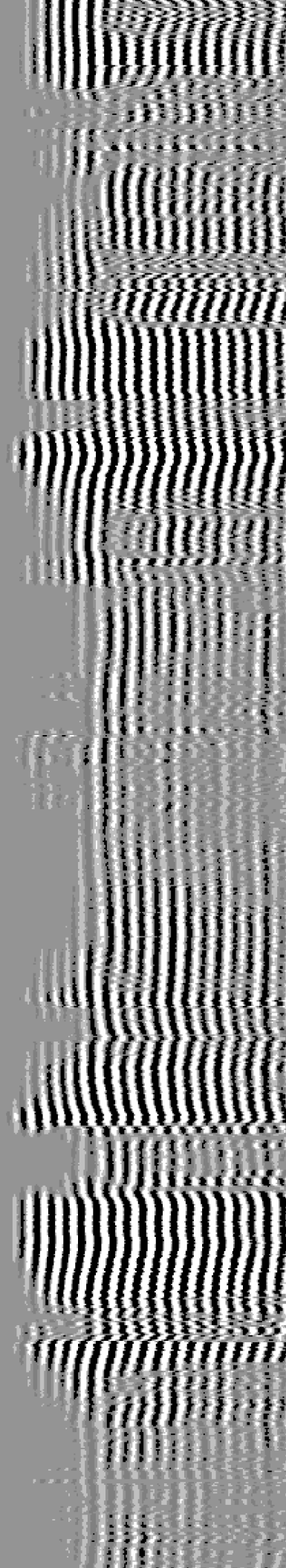
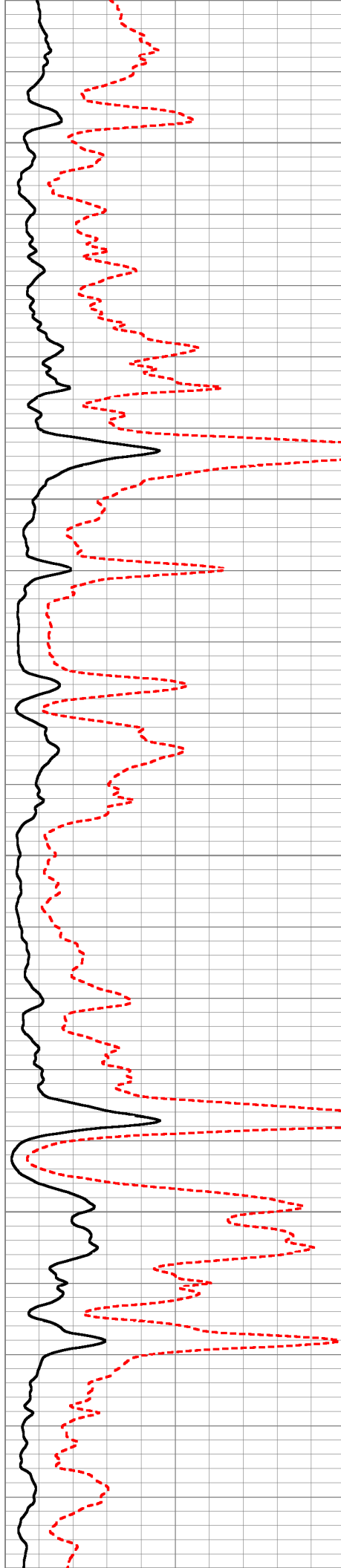
5650

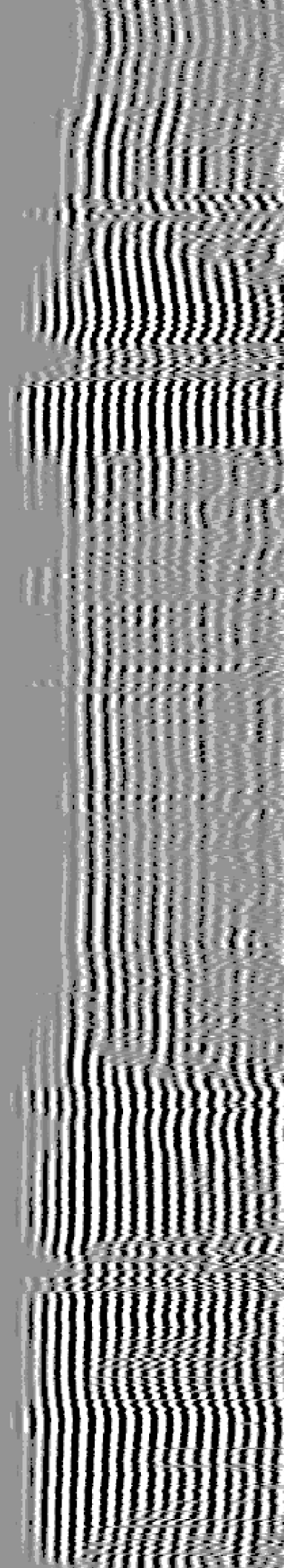
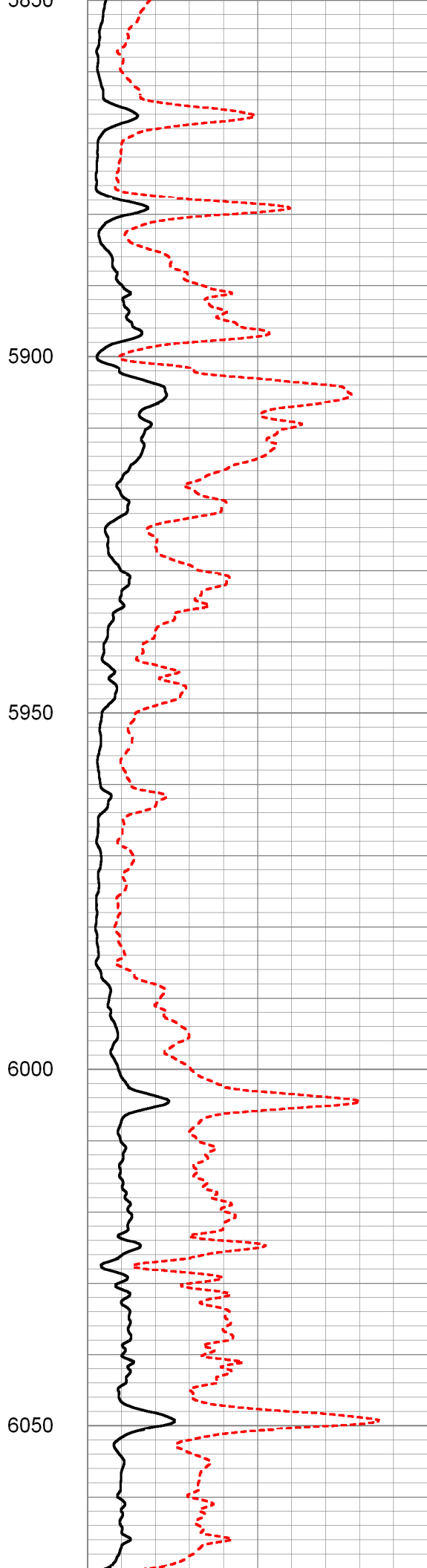
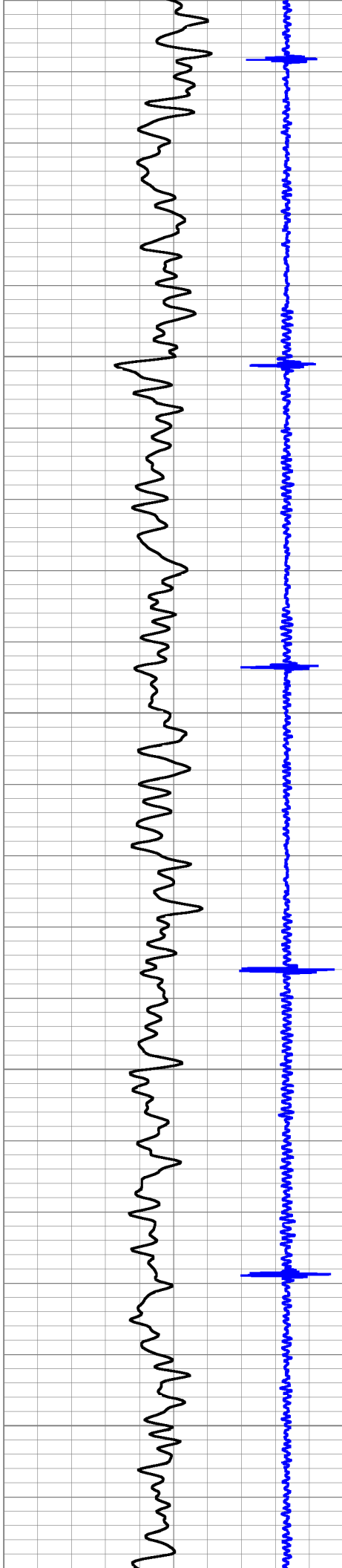
5700

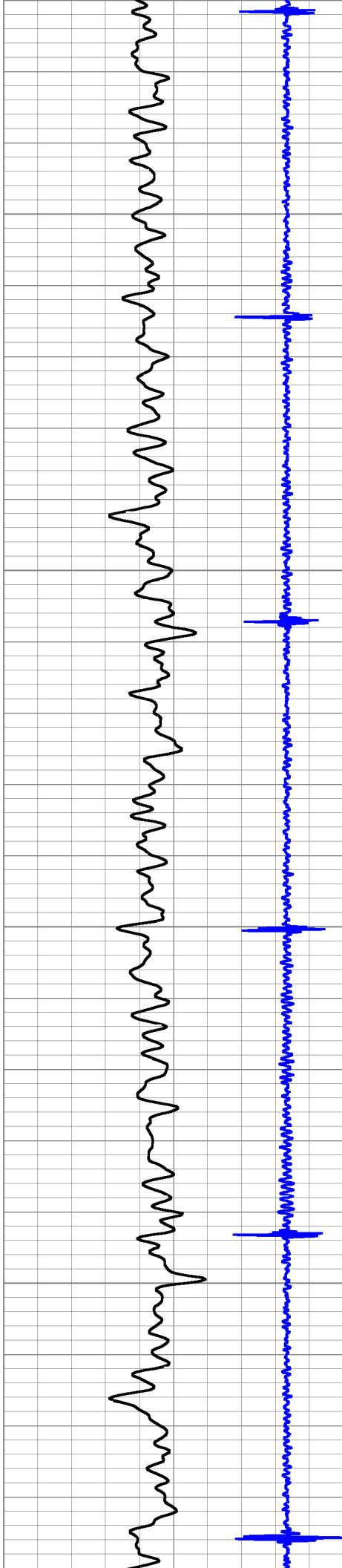
5750

5800

5850





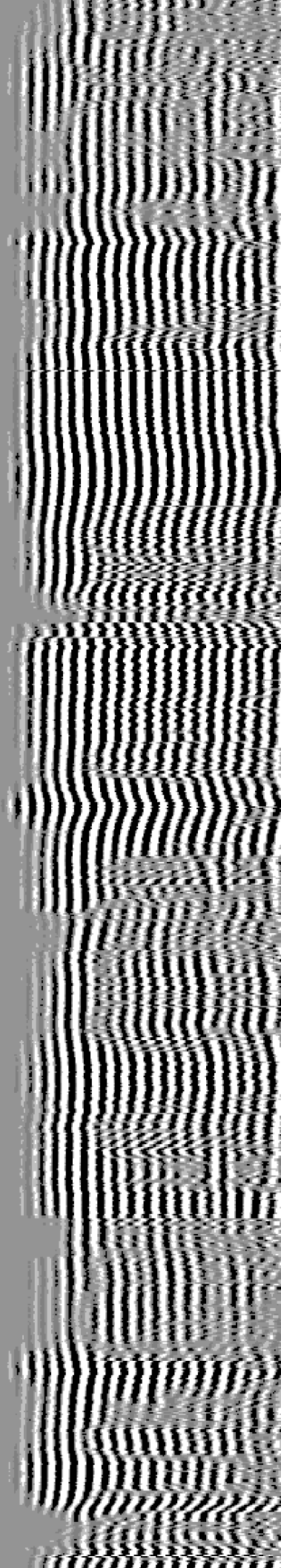
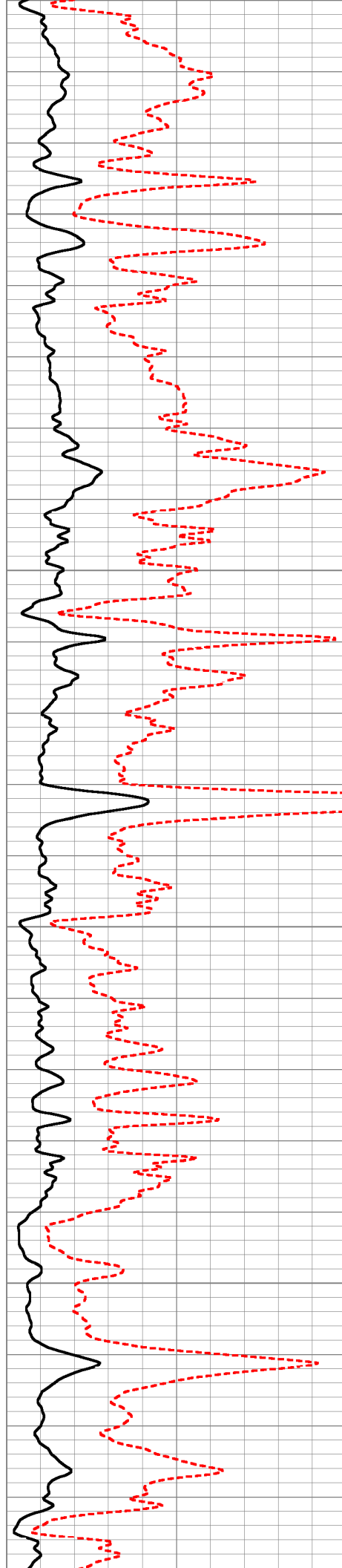


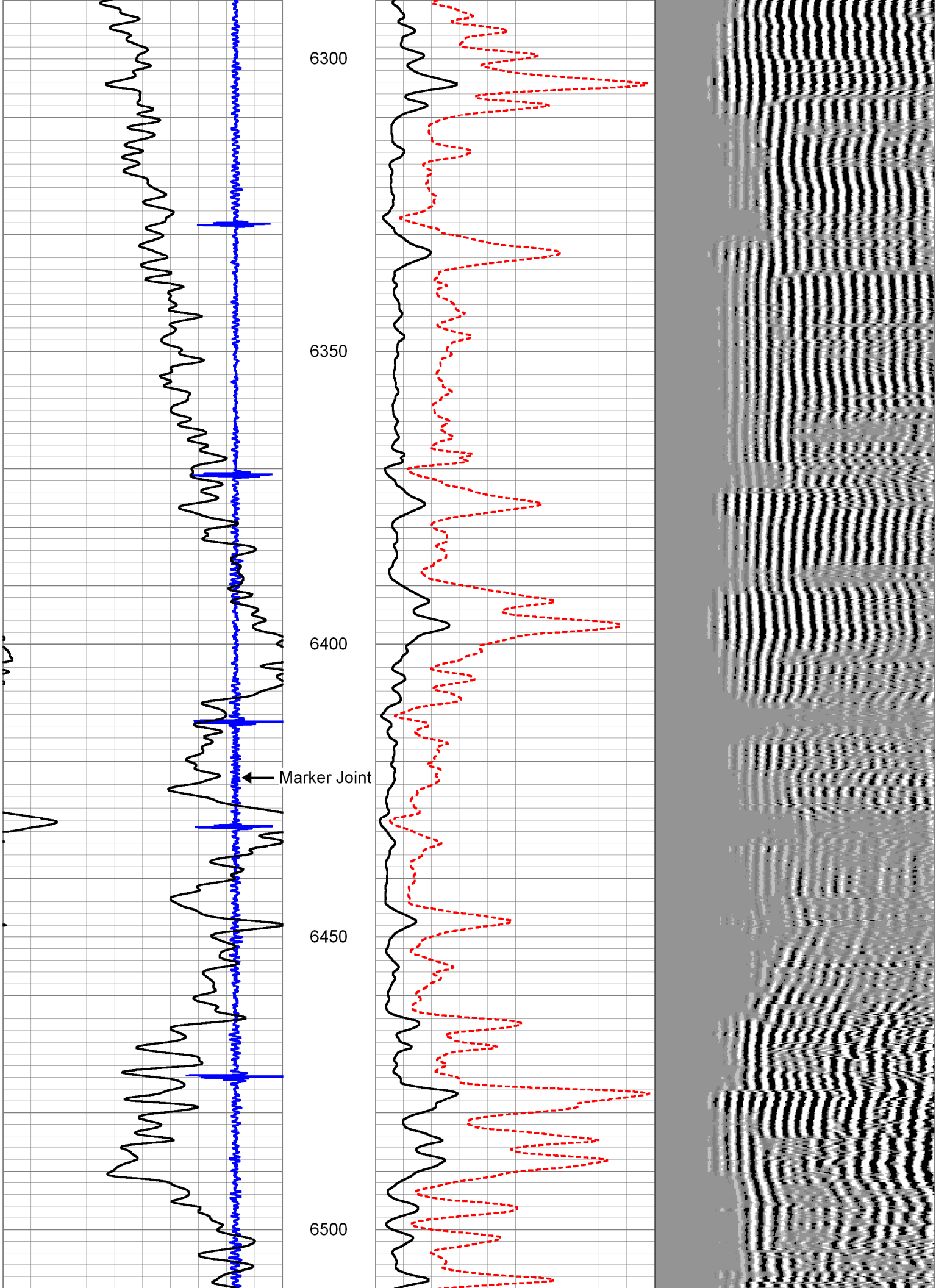
6100

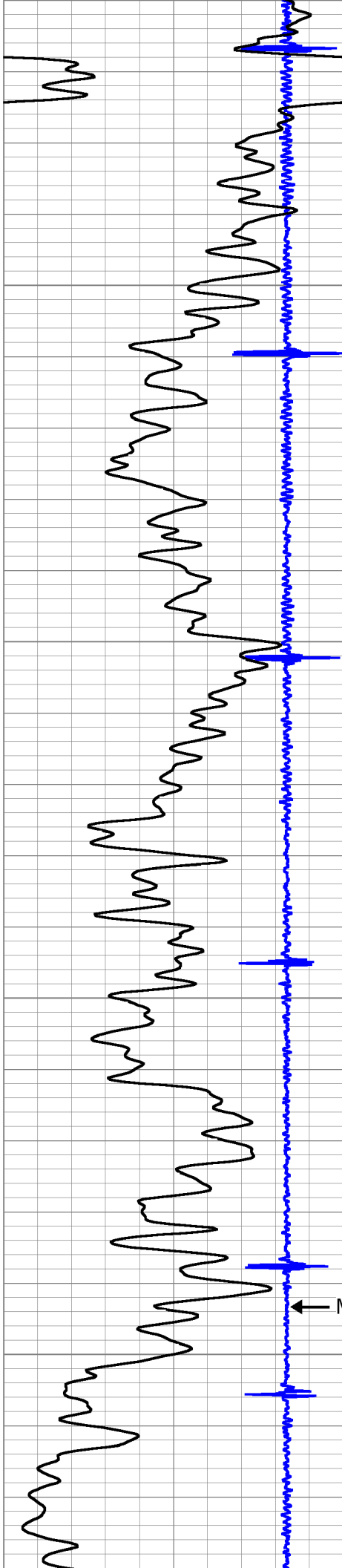
6150

6200

6250







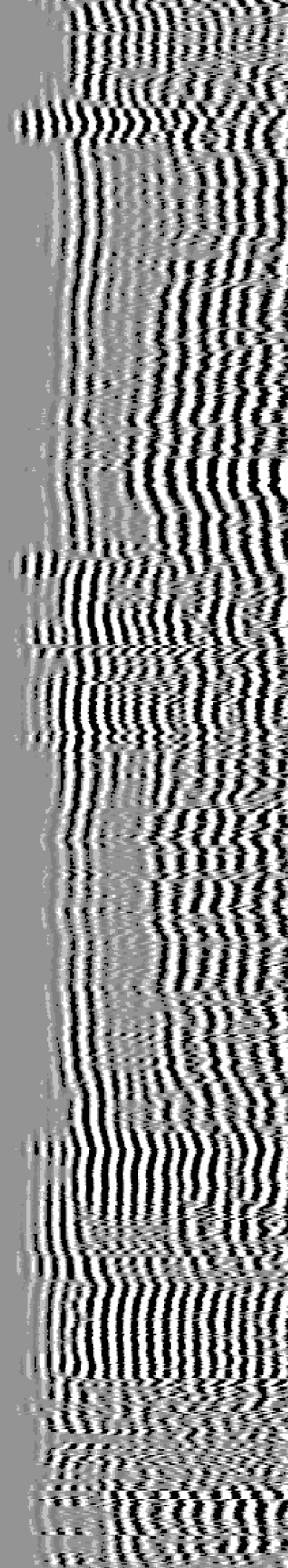
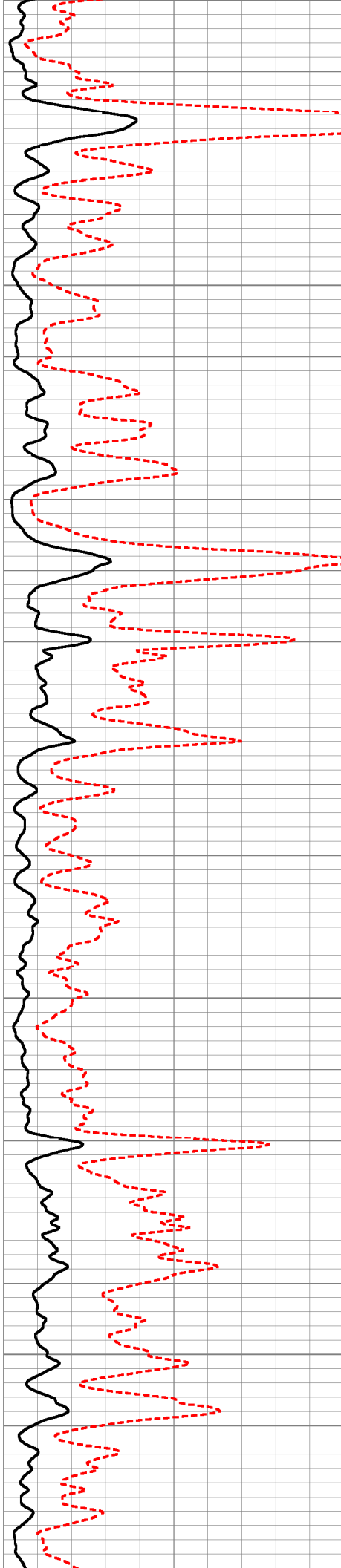
6550

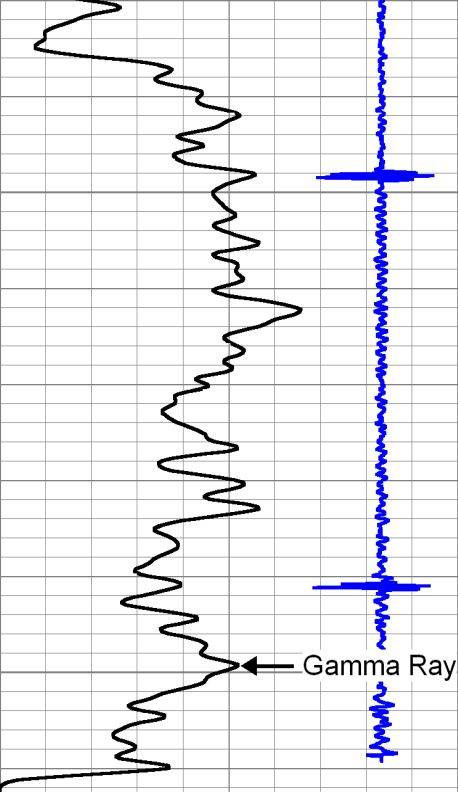
6600

6650

6700

Marker Joint

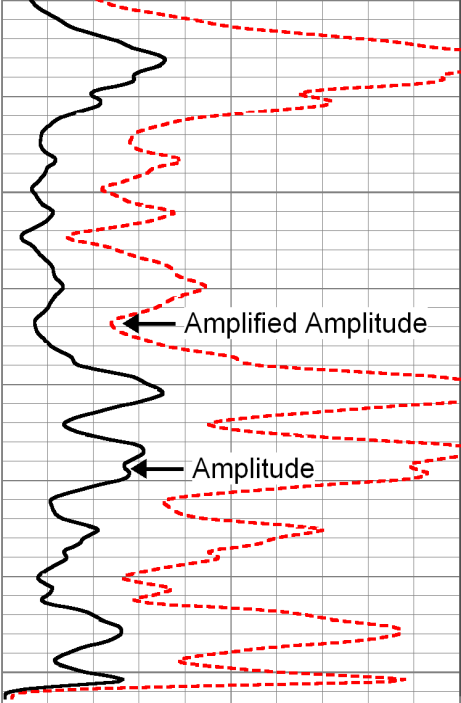




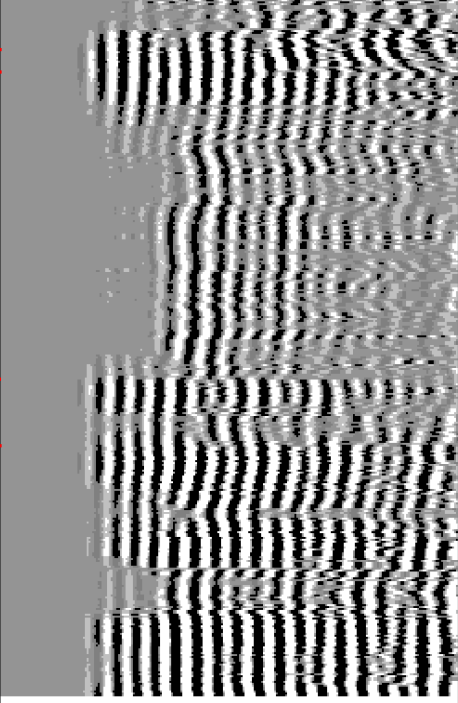
5	Collar Locator	-1
0	Gamma Ray (GAPI)	200

6750

6800



0	Amplified Amplitude (mV)	30
0	Amplitude (mV)	100



200	Variable Density	1200
-----	------------------	------