

CEMENT BOND
GAMMA RAY
LOG

Well Hill Ranch 23-12

Field	Purgatorie River
1	1
2	2
3	3
4	4
5	5
6	6
7	7
8	8
9	9
10	10
11	11
12	12
13	13
14	14
15	15
16	16
17	17
18	18
19	19
20	20
21	21
22	22
23	23
24	24
25	25
26	26
27	27
28	28
29	29
30	30
31	31
32	32
33	33
34	34
35	35
36	36
37	37
38	38
39	39
40	40
41	41
42	42
43	43
44	44
45	45
46	46
47	47
48	48
49	49
50	50
51	51
52	52
53	53
54	54
55	55
56	56
57	57
58	58
59	59
60	60
61	61
62	62
63	63
64	64
65	65
66	66
67	67
68	68
69	69
70	70
71	71
72	72
73	73
74	74
75	75
76	76
77	77
78	78
79	79
80	80
81	81
82	82
83	83
84	84
85	85
86	86
87	87
88	88
89	89
90	90
91	91
92	92
93	93
94	94
95	95
96	96
97	97
98	98
99	99
100	100

County Las Animas State CO

Location: API #: 05 071 09476 00

temp

SEC 23 TWP 34S RGE 67W	Elevation
------------------------	-----------

CompanyXTO Energy Inc.
Well Hill Ranch 23-12
Field Purgatorie River
County Las Animas
State CO

Permanent Datum	Ground Level
Log Measured From	Ground Level
Drilling Measured From	Ground Level

Elevation 7785

K.B.	---
D.F.	----
G.L.	7785'

Date _____

Run Number	One
0150	

2430	23301
------	-------

bottom added interval	2316'
bottom logict	2020

Top Log Interval	Surface
------------------	---------

Open Hole Size	7 7/8"
----------------	--------

Type Fluid	Water
------------	-------

density / viscosity

Estimated Cement Ton	10761
Max. Recouped 1c11p.	132F

time Well Ready	Portable M
-----------------	------------

Time Loader on Bottom	3:45PM
-----------------------	--------

Equipment Number	T0698
------------------	-------

| Location | Trinidad |

Recorded By	J Sisneros
-------------	------------

Witnessed by	
Borahole Beach	

Run Number	Bit	From	To
Deleting records			

[illegible]

--	--	--	--

[illegible]

Surface String	8 5/8"	
----------------	--------	--

rot. String		

Production string	5 1/2"	
-------------------	--------	--

--	--	--

<<< Fold Here >>>

All interpretations are opinions based on inferences from electrical or other measurements and we cannot and do not guarantee the accuracy or correctness of any interpretation, and we shall not, except in the case of gross or willful negligence on our part, be liable or responsible for any loss, costs, damages, or expenses incurred or sustained by anyone resulting from any interpretation made by any of our officers, agents or employees. These interpretations are also subject to our general terms and conditions set out in our current Price Schedule.

Comments

Lorencito, follow main road past compressor 2.2 miles, take right (right just before XTO hill), @ Y stay right up hill, drive thru lorencito 14-19 location, @ Top of hill take hard left, drive thru Lorencito 9-24 location, take third left, drive thru one location, at Y stay straight, drive thru HREAST 14-14, drive thru HR 23-04, take next left, drive thru two locations, deadend on location.

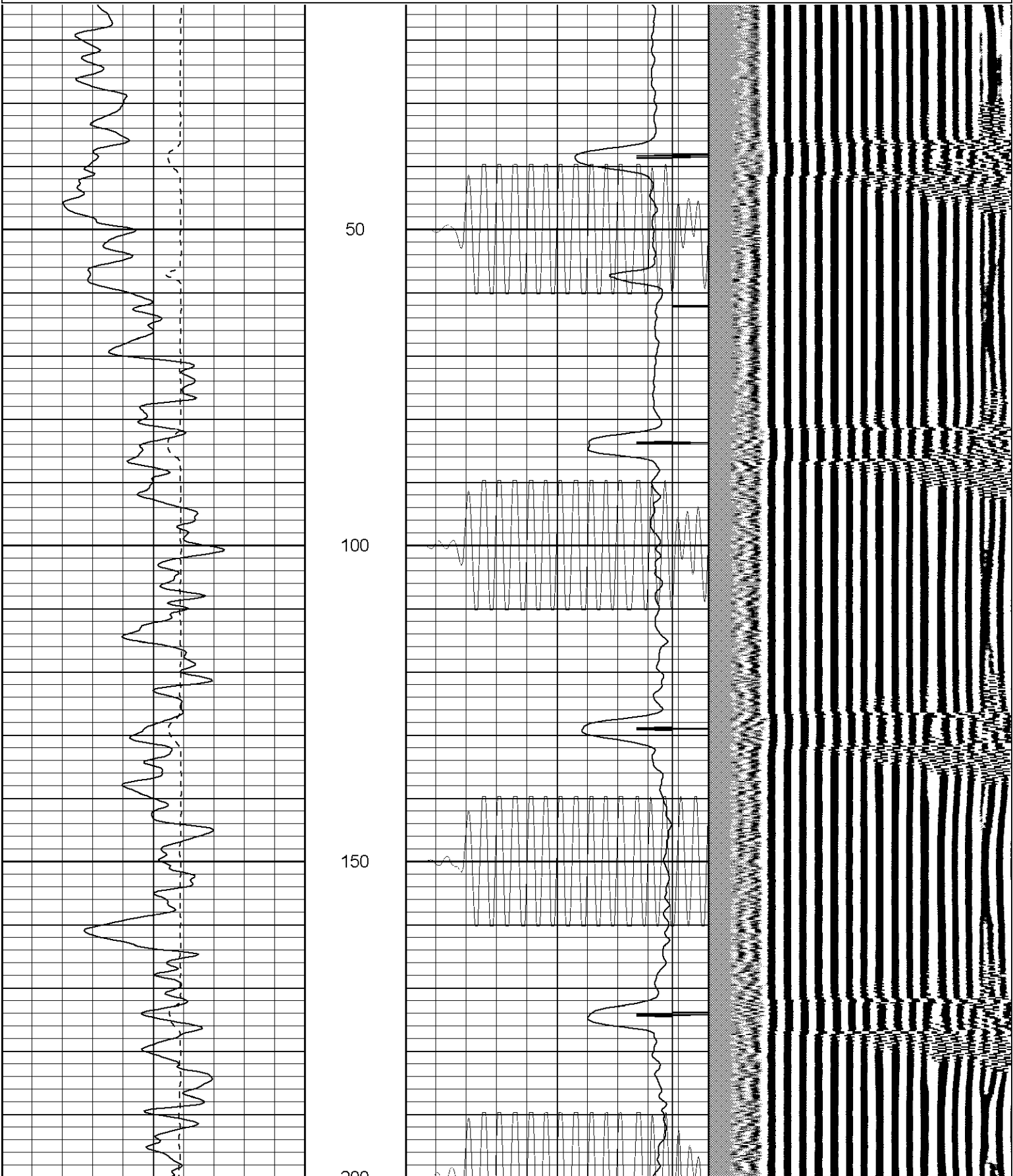
Due to down hole conditions Tool Spikes From 2100'-2250' Repeated a few times while logging.

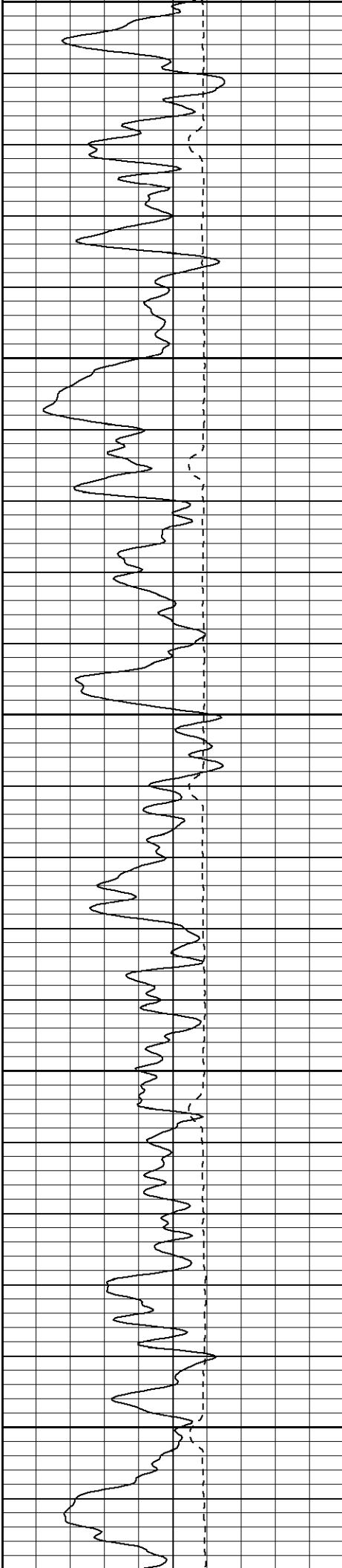


Black Lick, Pa.
Mercer, Pa.
Wooster, Oh.
Cleveland, Ok.
Trinidad, Co.

Main Pass

0	GR (GAPI)	200	15	CCL	-2	200	WVF5FT	1200
400	TT3FT (usec)	200	0	AMP3FT (mV)	100			
			200	WVF5FT	1200			





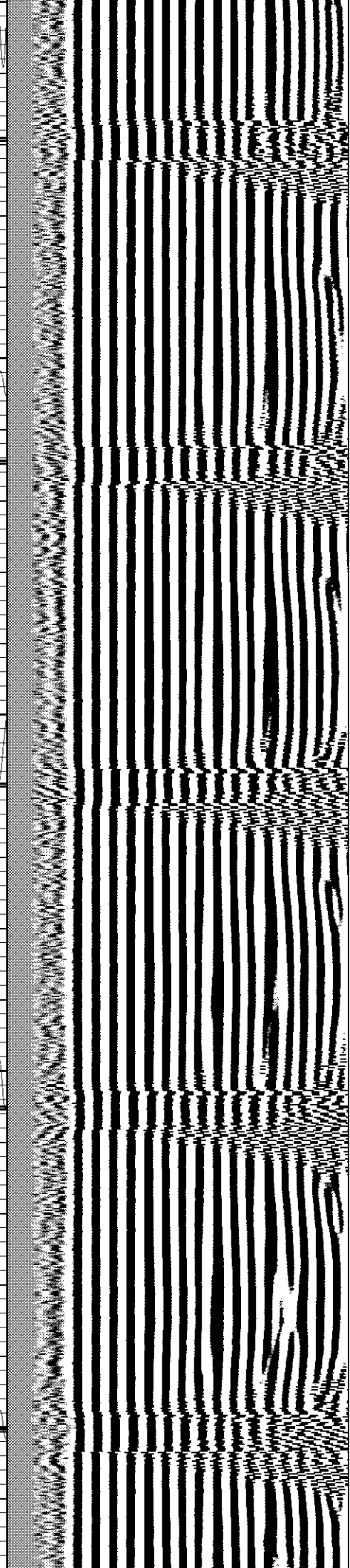
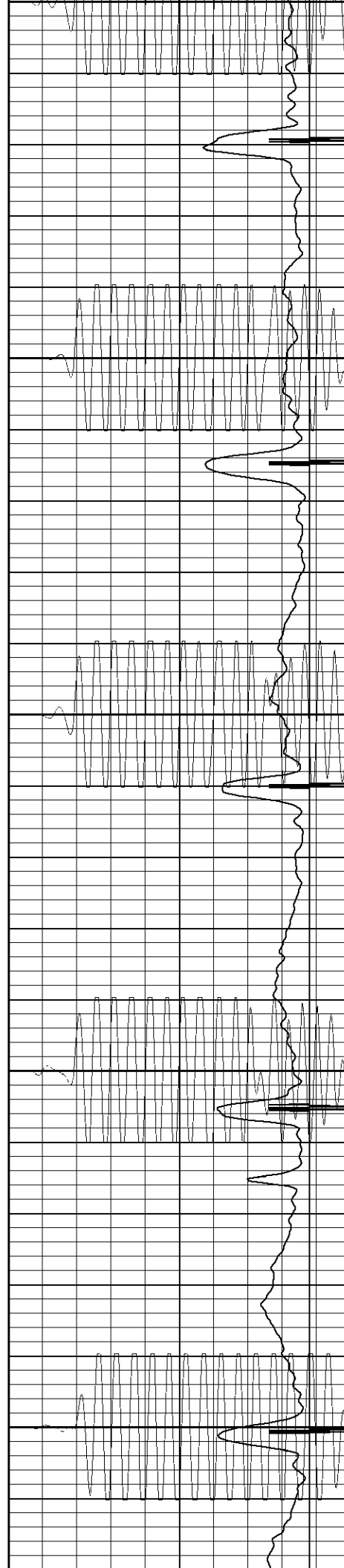
200

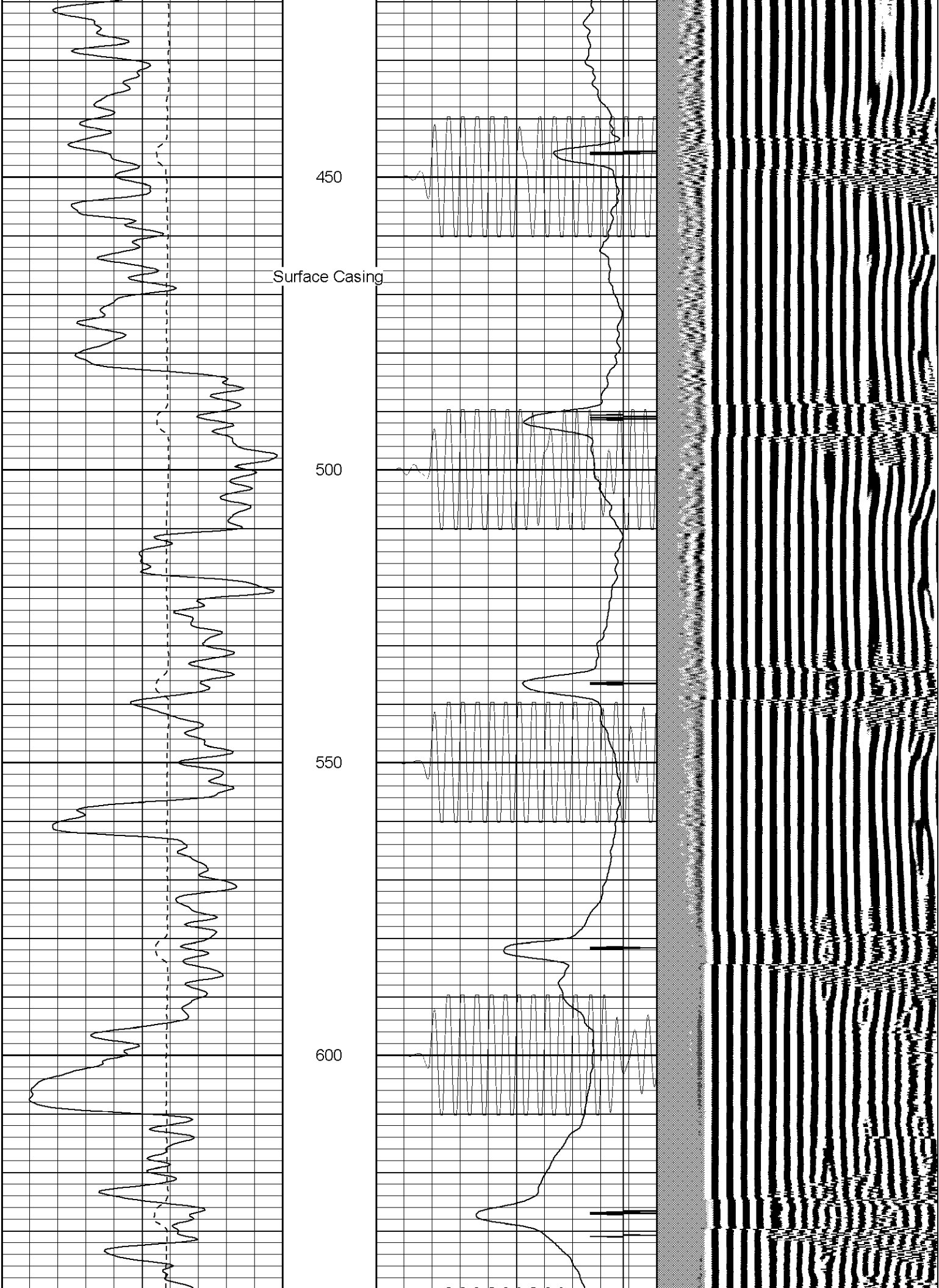
250

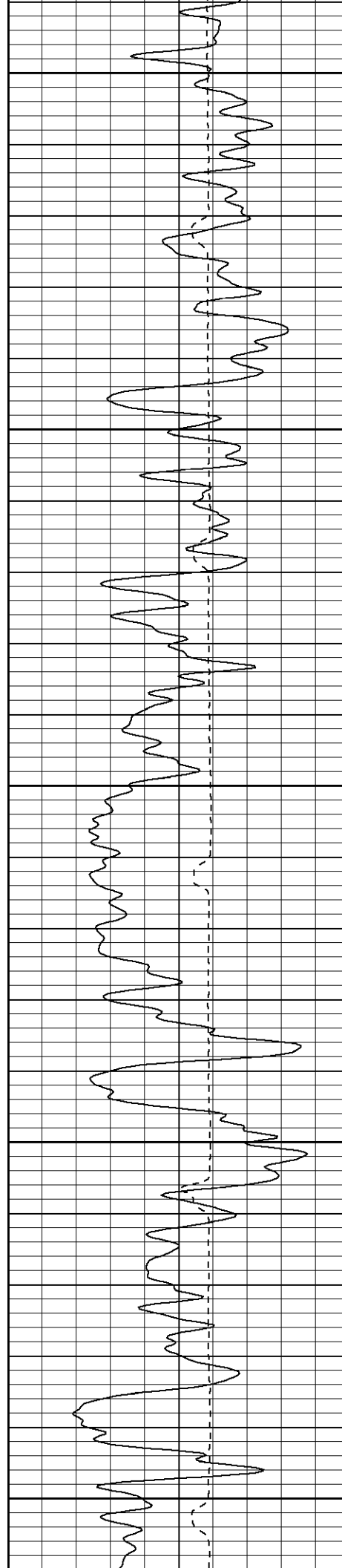
300

350

400







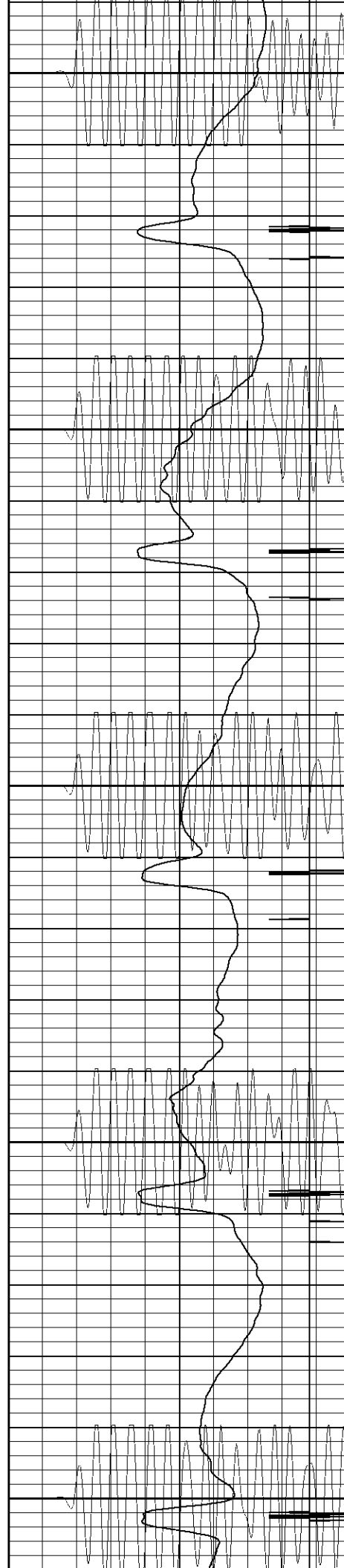
650

700

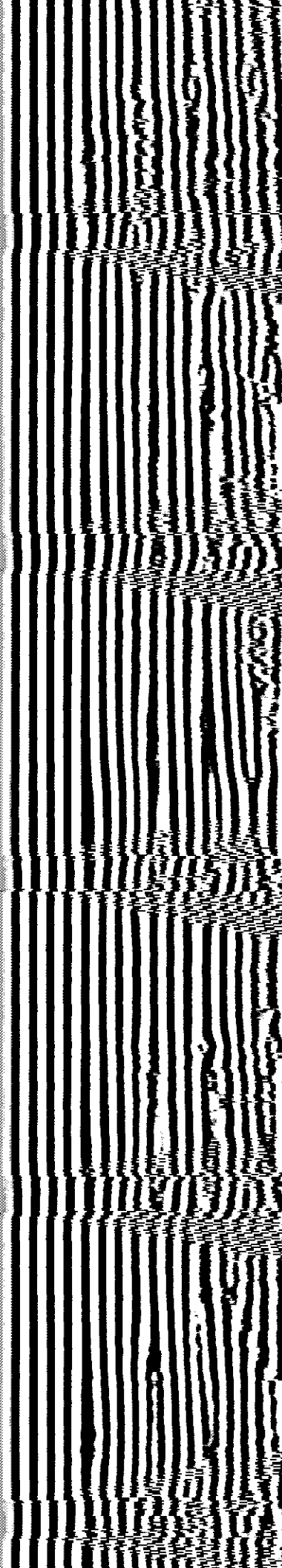
750

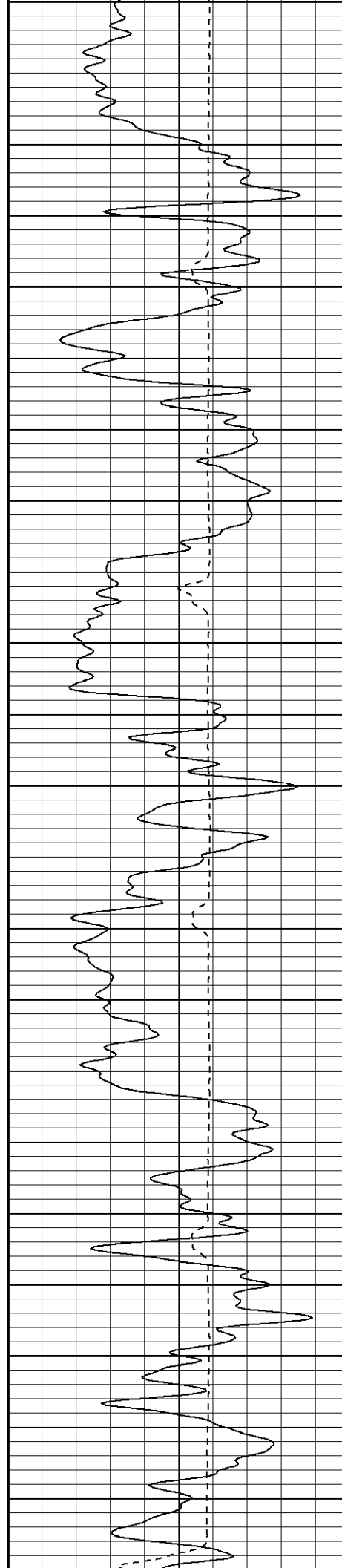
800

850



650 700 750 800 850



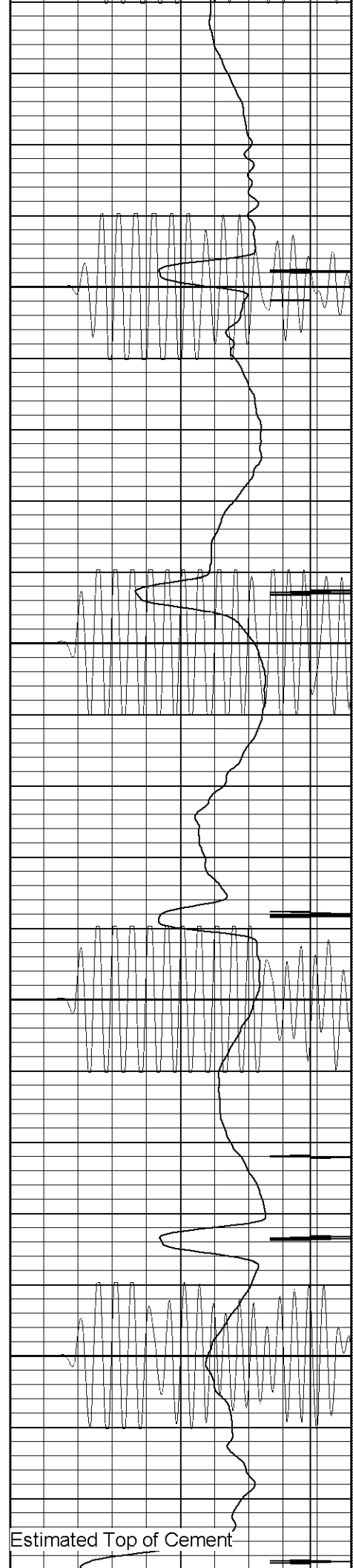


900

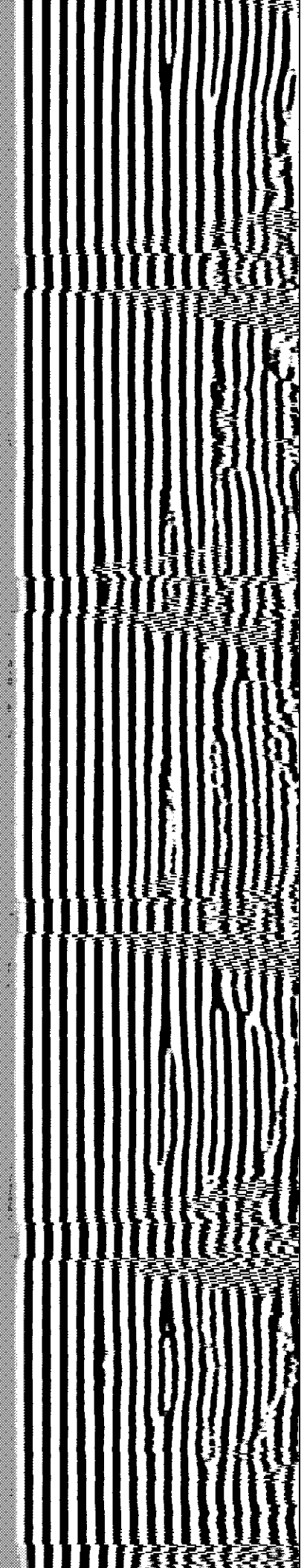
950

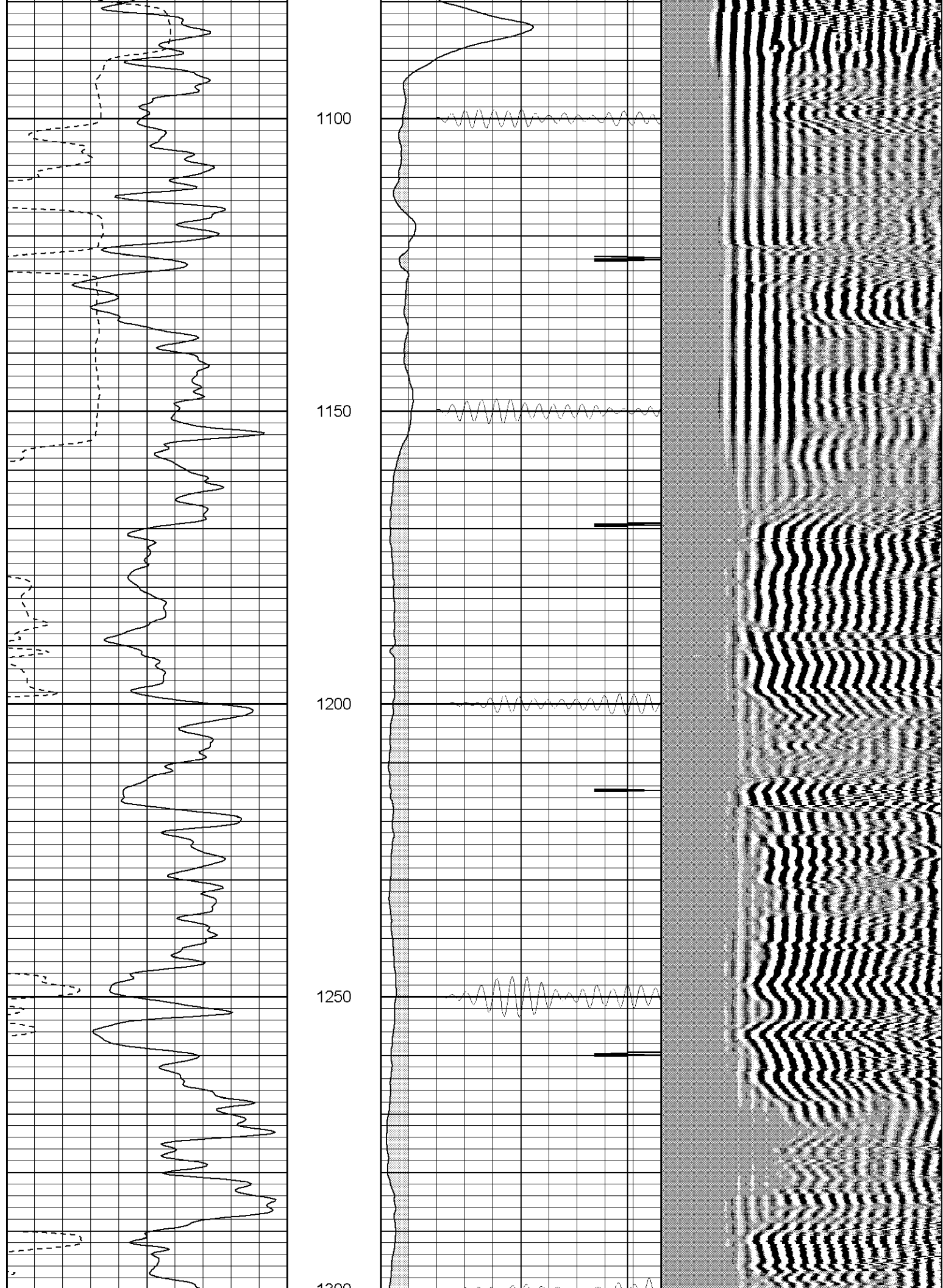
1000

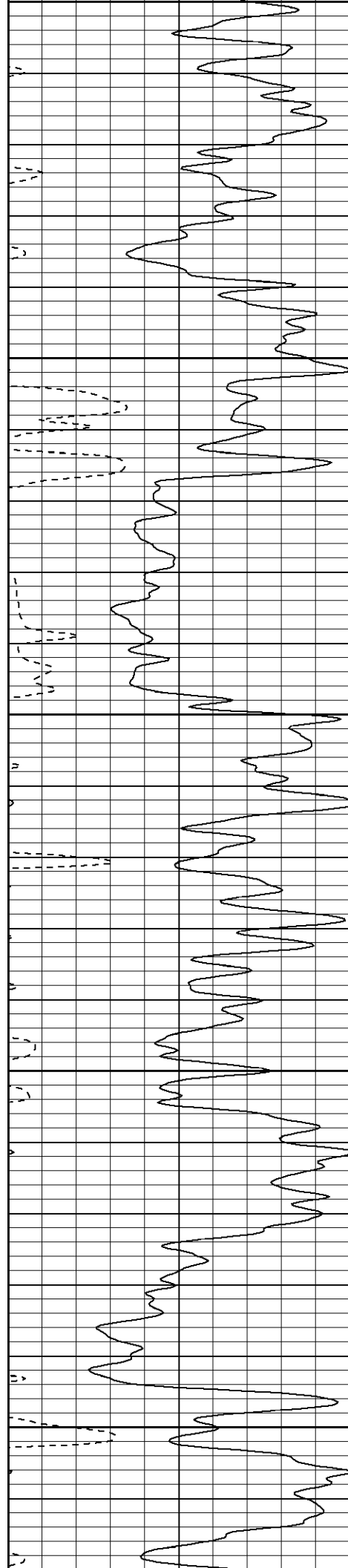
1050



Estimated Top of Cement







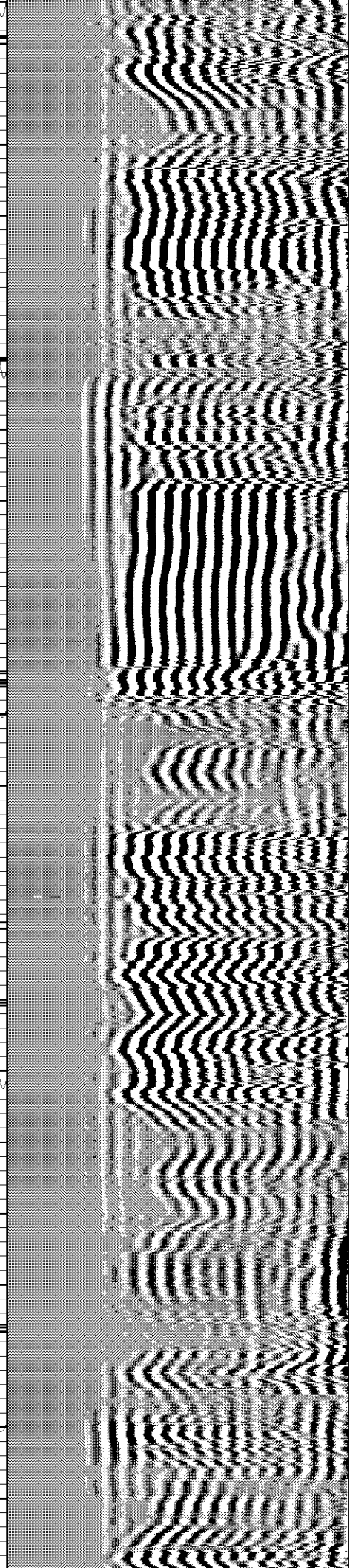
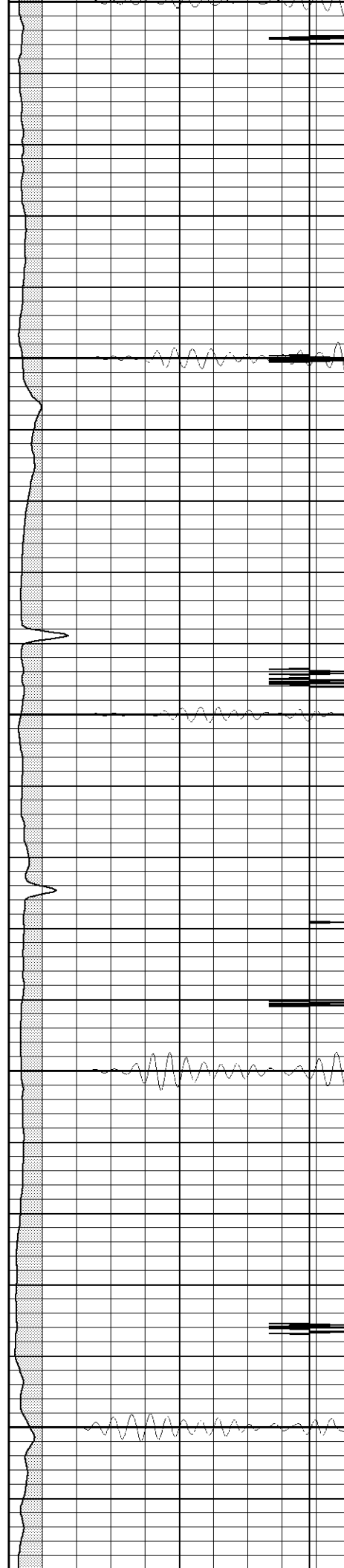
1300

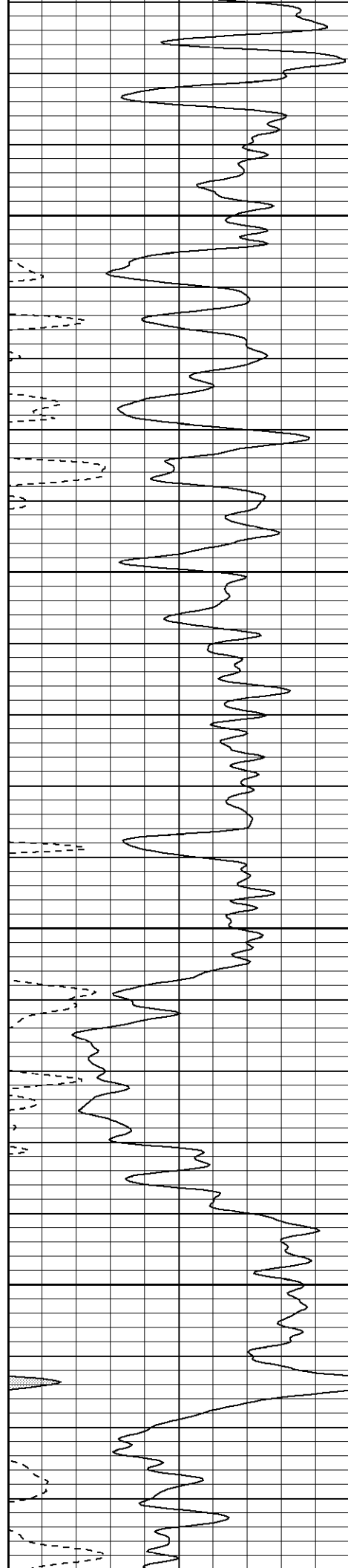
1350

1400

1450

1500



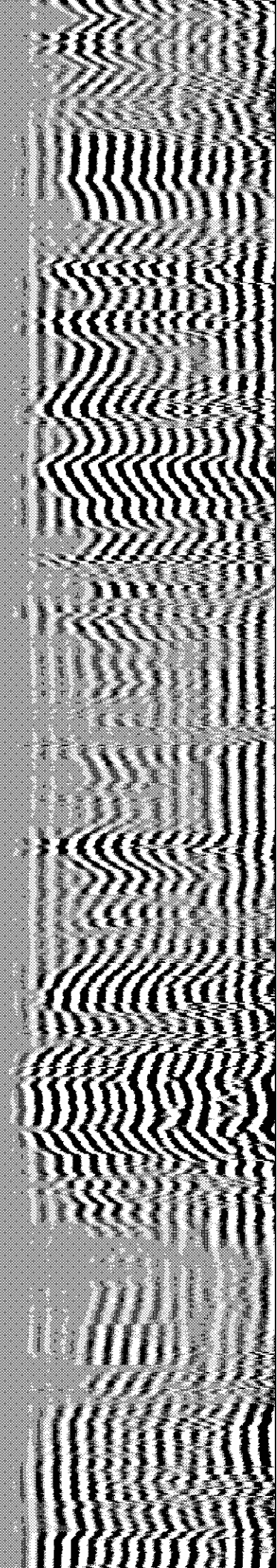
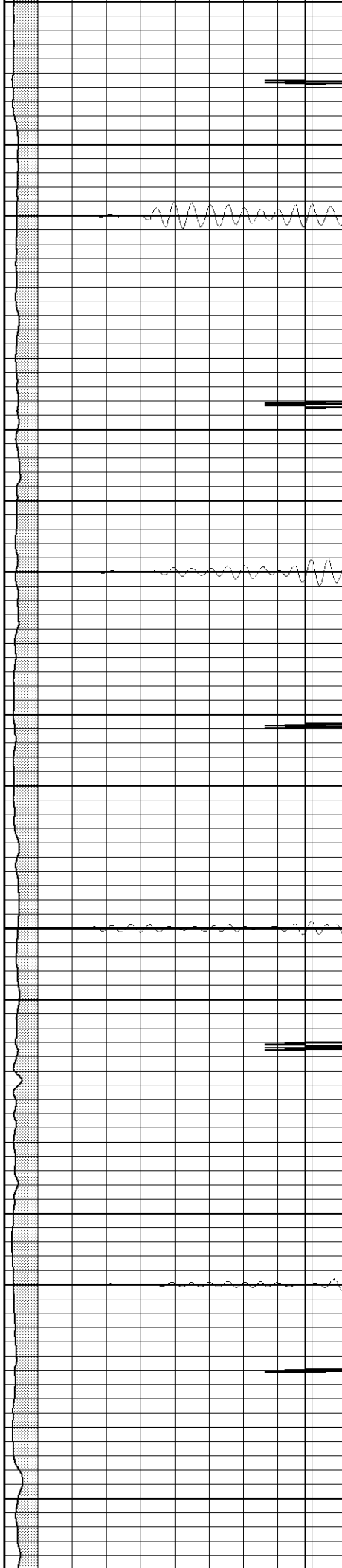


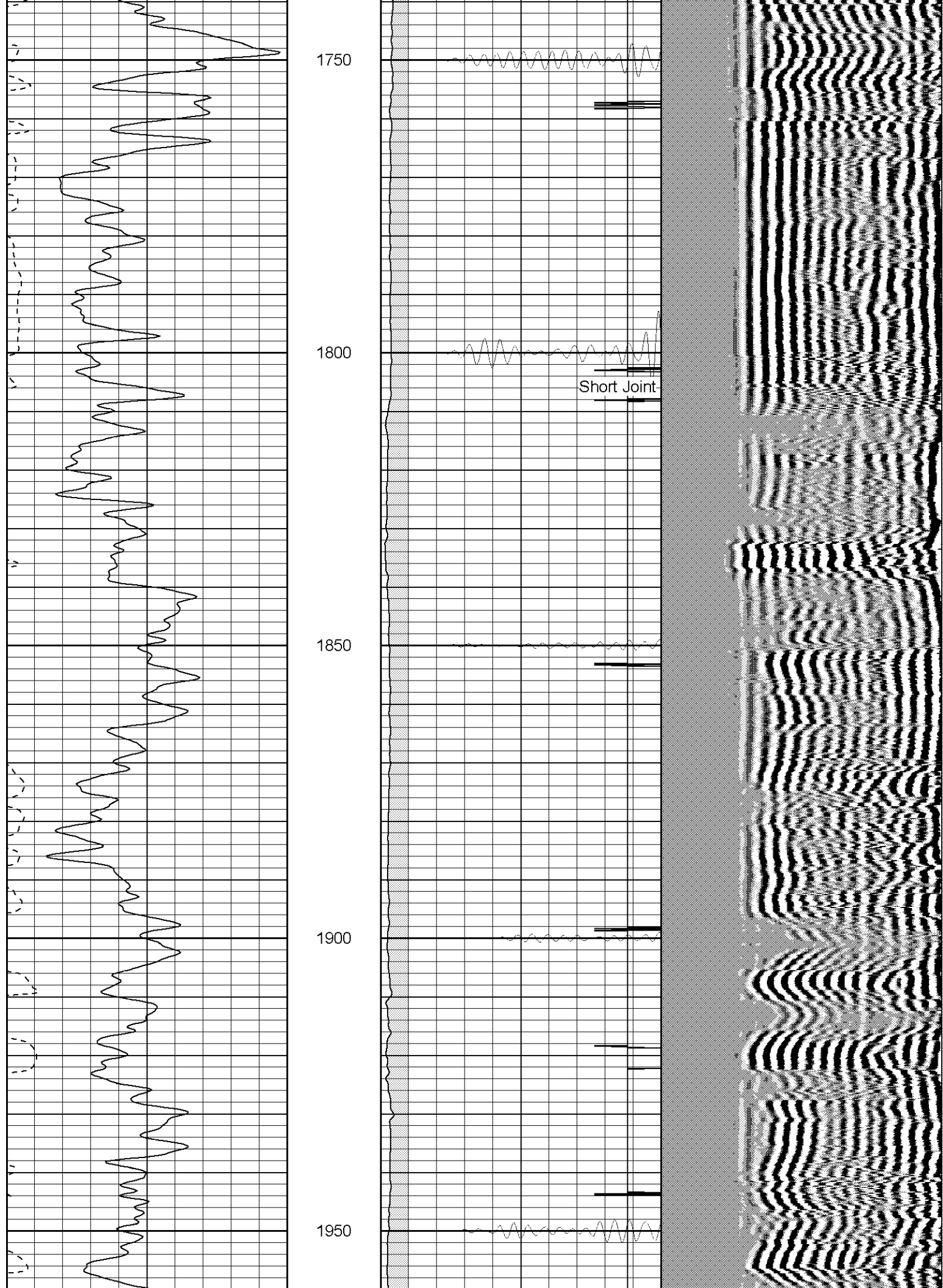
1550

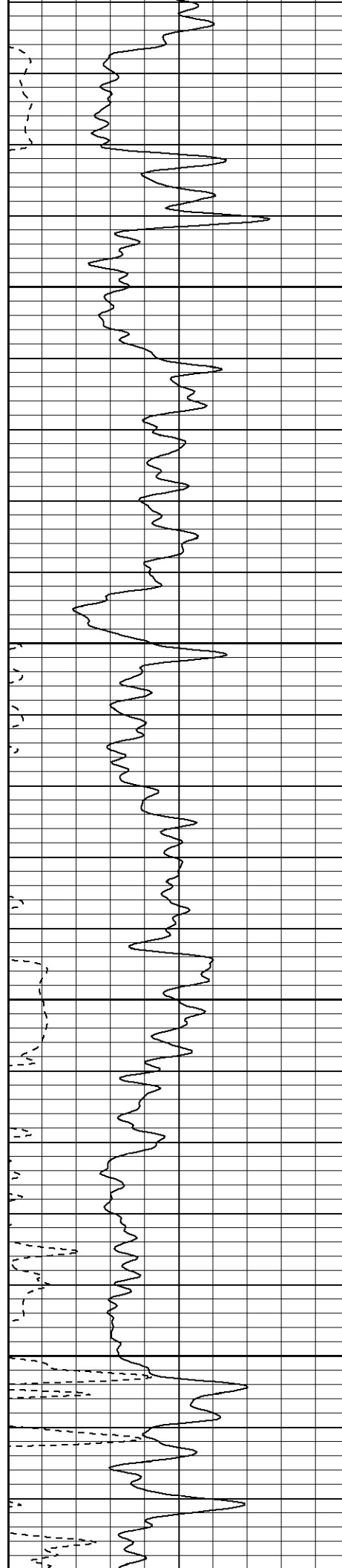
1600

1650

1700





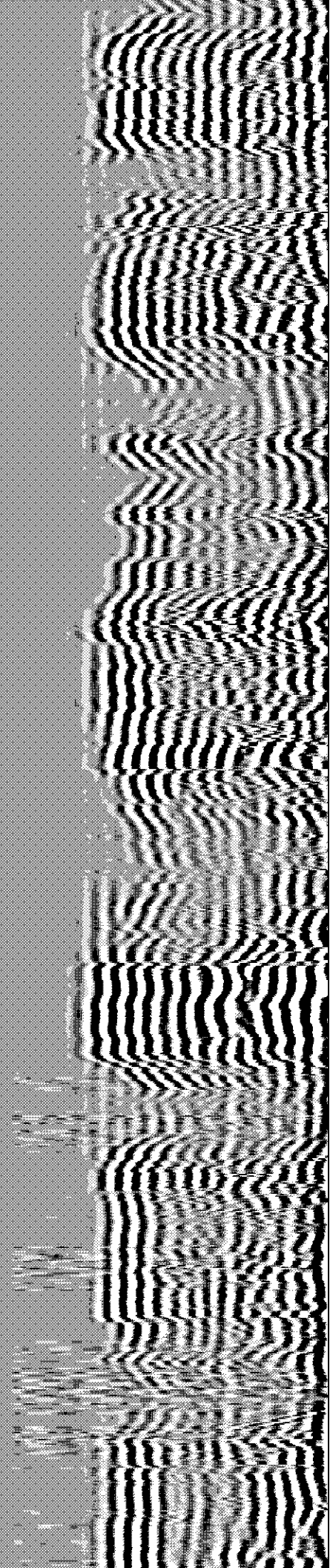


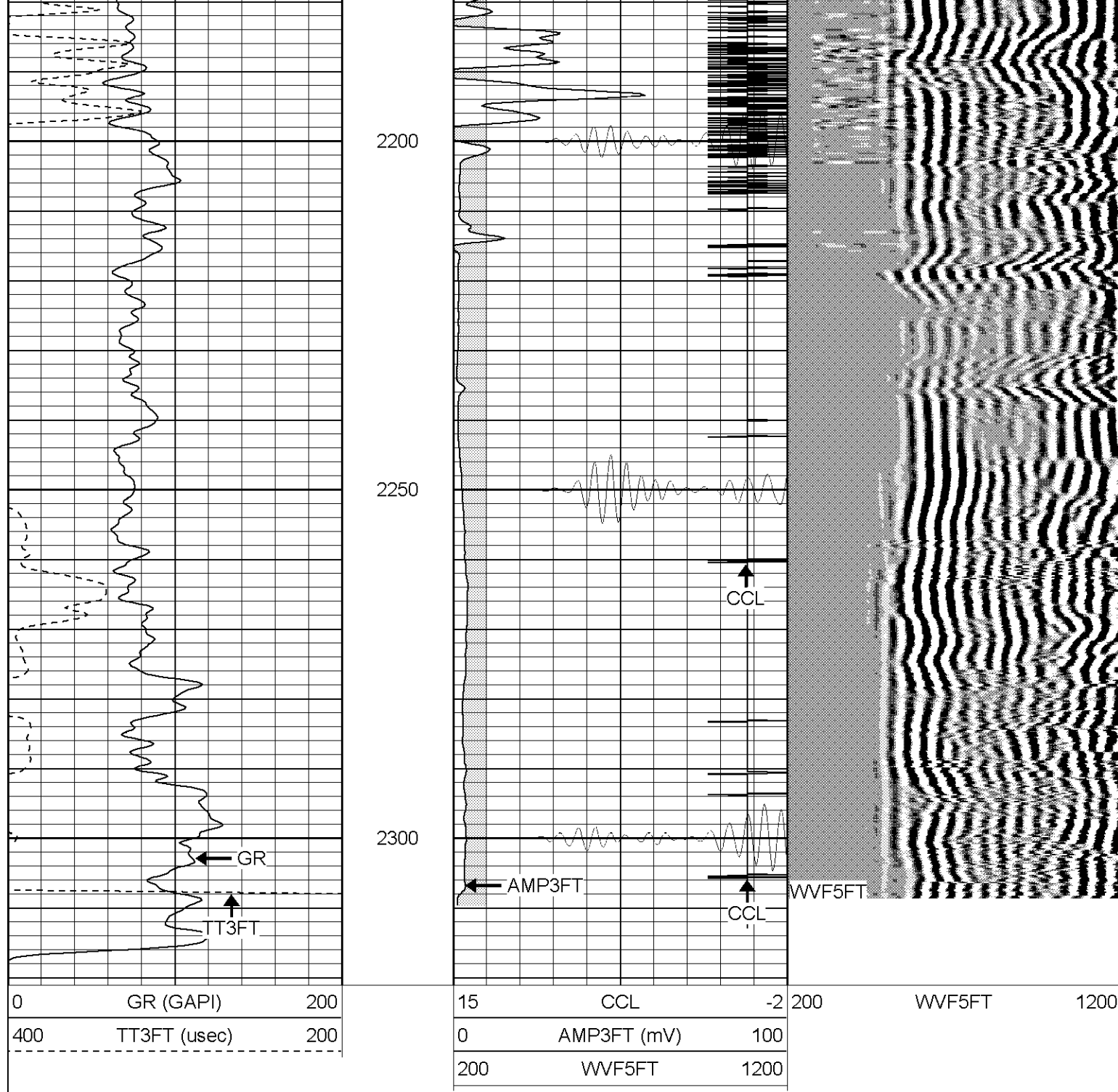
2000

2050

2100

2150





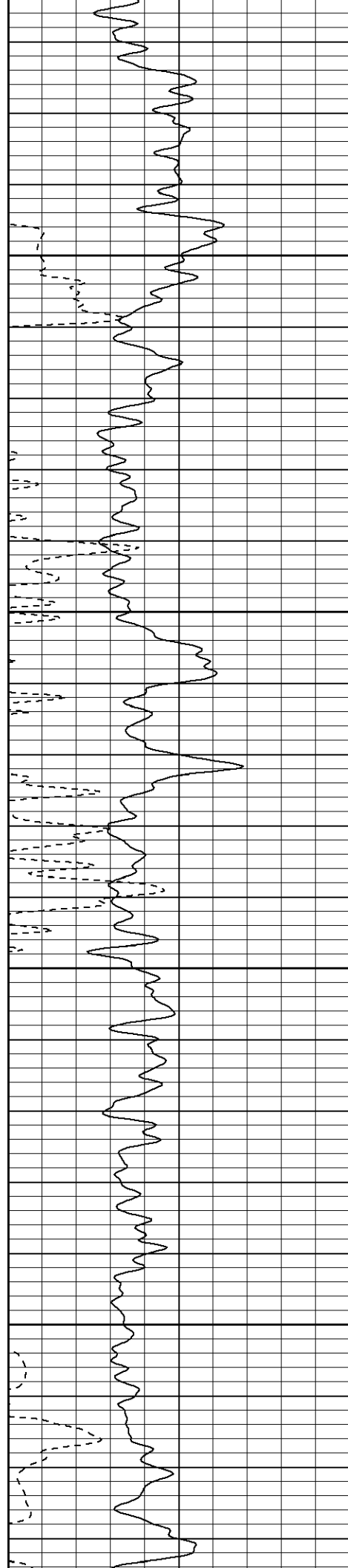
SUPERIOR

Black Lick, Pa.
Mercer, Pa.
Wooster, Oh.
Cleveland, Ok.
Trinidad, Co.

Repeat Section

Database File: hr2312043008b.db
Dataset Pathname: pass1.1
Presentation Format: sclbrt
Dataset Creation: Wed Apr 30 16:59:04 2008 by Calc Open-Cased 070814
Charted by: Depth in Feet scaled 1:240





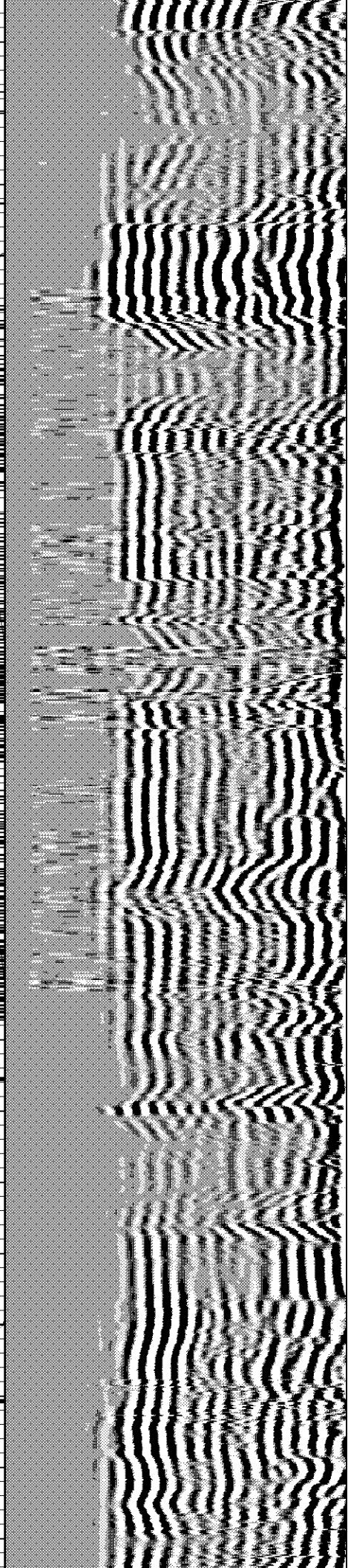
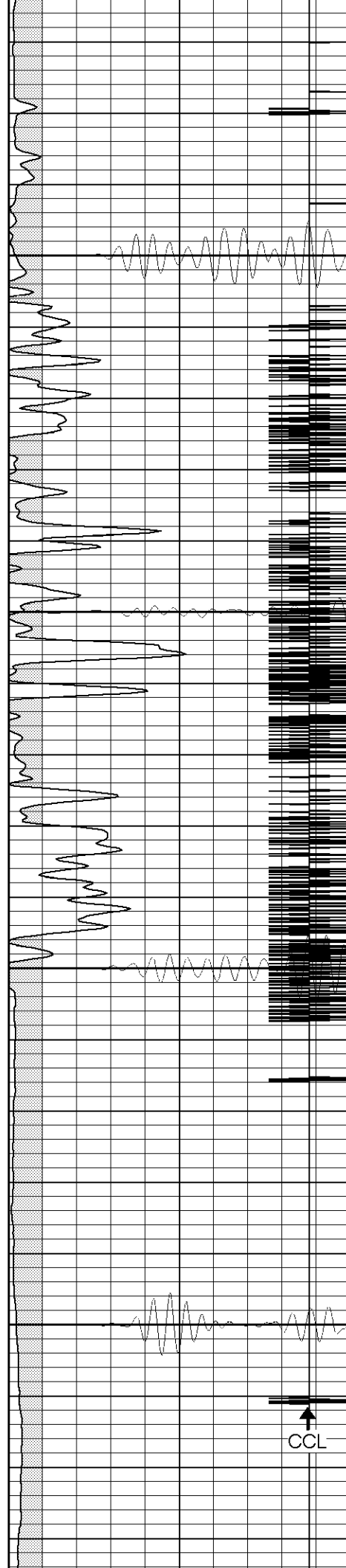
2100

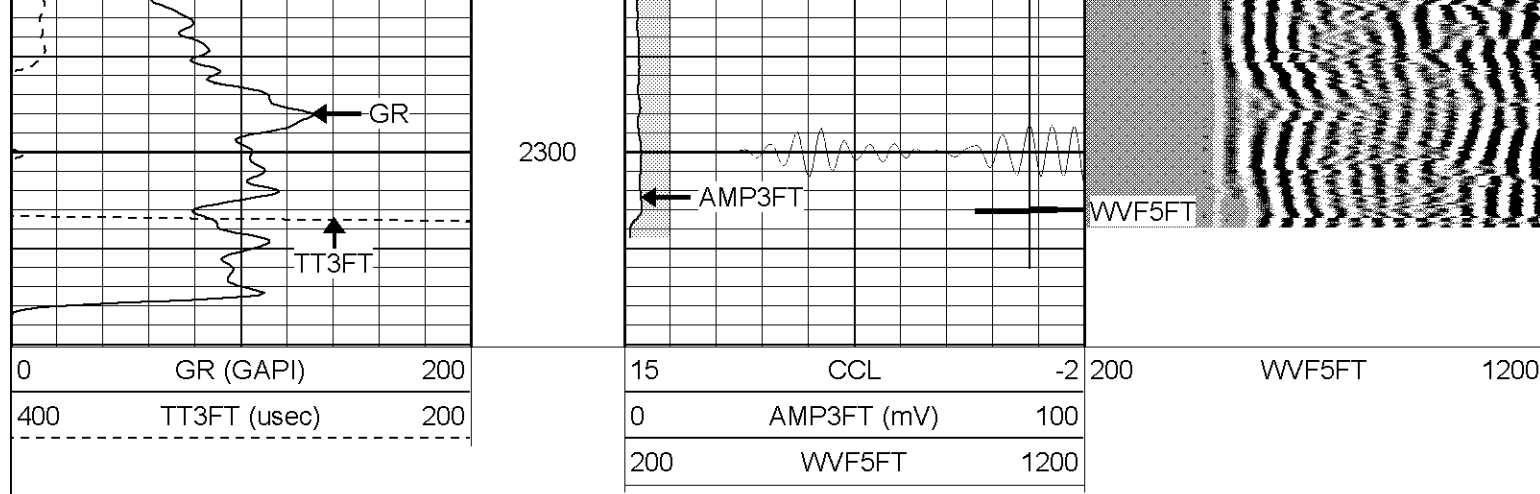
2150

2200

2250

CCL





Calibration Report

Database File: hr2312043008b.db
 Dataset Pathname: pass1
 Dataset Creation: Wed Apr 30 15:48:28 2008 by Log Open-Cased 070814

Gamma Ray Calibration Report

Serial Number: Slimhole
 Tool Model: SH
 Performed: Mon Apr 28 11:42:58 2008

Calibrator Value: 1.0 GAPI

Background Reading: 0.0 cps
 Calibrator Reading: 1.0 cps

Sensitivity: 1.1000 GAPI/cps

Segmented Cement Bond Log Calibration Report

Serial Number: 0001
 Tool Model: ProbeRadII

Calibration Casing Diameter: 5.500 in
 Calibration Depth: 269.932 ft

Master Calibration, performed Wed Apr 30 15:42:30 2008:

	Raw (v)		Calibrated (mv)		Results	
	Zero	Cal	Zero	Cal	Gain	Offset
3'	-0.008	2.056	1.000	85.000	40.689	1.326
CAL	-0.003	1.756				
5'	-0.008	2.083	1.000	85.000	40.171	1.306
SUM						
S1	-0.011	1.923	0.000	85.000	43.938	0.493
S2	-0.010	1.939	0.000	85.000	43.613	0.420
S3	-0.008	2.086	0.000	85.000	40.590	0.334
S4	-0.010	2.217	0.000	85.000	38.175	0.367
S5	-0.012	2.253	0.000	85.000	37.538	0.441
S6	-0.011	2.174	0.000	85.000	38.891	0.447
S7	-0.011	2.064	0.000	85.000	40.964	0.435
S8	-0.012	1.991	0.000	85.000	42.454	0.491

Internal Reference Calibration, performed Wed Jan 16 14:13:59 2008:

Raw (v)	Calibrated (v)	Results
---------	----------------	---------

	Zero	Cal	Zero	Cal	Gain	Offset
CAL	0.000	0.000	-0.003	1.756	1.000	0.000

Air Zero Calibration, performed Wed Apr 30 15:41:35 2008:

	Raw (v)	Calibrated (v)	Results
	Zero	Zero	Offset
3'	-0.008	0.000	0.000
5'	-0.008	0.000	0.001
SUM			
S1	-0.011	0.000	-0.000
S2	-0.009	0.000	-0.000
S3	-0.009	0.000	0.001
S4	-0.010	0.000	0.000
S5	-0.012	0.000	-0.000
S6	-0.011	0.000	0.000
S7	-0.011	0.000	0.000
S8	-0.012	0.000	0.000