



SUPERIOR
Black Lick, Pa.
Mercer, Pa.
Wooster, Oh.
Cleveland, Ok.
Trinidad, Co.

DUAL INDUCTION LOG

Company XTO Energy Inc.
Well Hill Ranch 23-12
Field Purgatoire River
County Las Animas State Colorado

Location: API # : 05 071 09476 00

2521' FSL & 577' FWL

SEC 23 TWP 34S RGE 67W

Permanent Datum Ground Level Elevation 7785'
Log Measured From Ground Level
Drilling Measured From Ground Level

Other Services
CDL
NEUTRON
Elevation
K.B. -----
D.F. -----
G.L. 7785'

Date 4-25-08

Run Number One

Depth Driller 2450'

Depth Logger 2448'

Bottom Logged Interval 2446'

Top Log Interval Surface Casing

Casing Driller 8 5/8" @ 467'

Casing Logger 467'

Bit Size 7 7/8"

Type Fluid in Hole Water

Density / Viscosity ///

pH / Fluid Loss ///

Source of Sample ///

Rm @ Meas. Temp ///

Rmf @ Meas. Temp ///

Rmc @ Meas. Temp ///

Source of Rmf / Rmc ///

Rm @ BHT ///

Time Circulation Stopped 12:00 P.M.

Time Logger on Bottom 2:15 P.M.

Maximum Recorded Temperature 114 DEG F

Equipment Number T697

Location Trinidad

Recorded By J. Cappellucci

Witnessed By Mr. Don Johnson

<<< Fold Here >>>

All interpretations are opinions based on inferences from electrical or other measurements and we cannot and do not guarantee the accuracy or correctness of any interpretation, and we shall not, except in the case of gross or willful negligence on our part, be liable or responsible for any loss, costs, damages, or expenses incurred or sustained by anyone resulting from any interpretation made by any of our officers, agents or employees. These interpretations are also subject to our general terms and conditions set out in our current Price Schedule.

Comments

Well Directions:
Lorencito, 2.2 miles past Compressor station take right,
at next Y stay right up hill, At top of hill take hard left,
take third left, stay right at Hill Ranch 14-14, drive through one location,
take next left, drive through two locations, dead end on location.

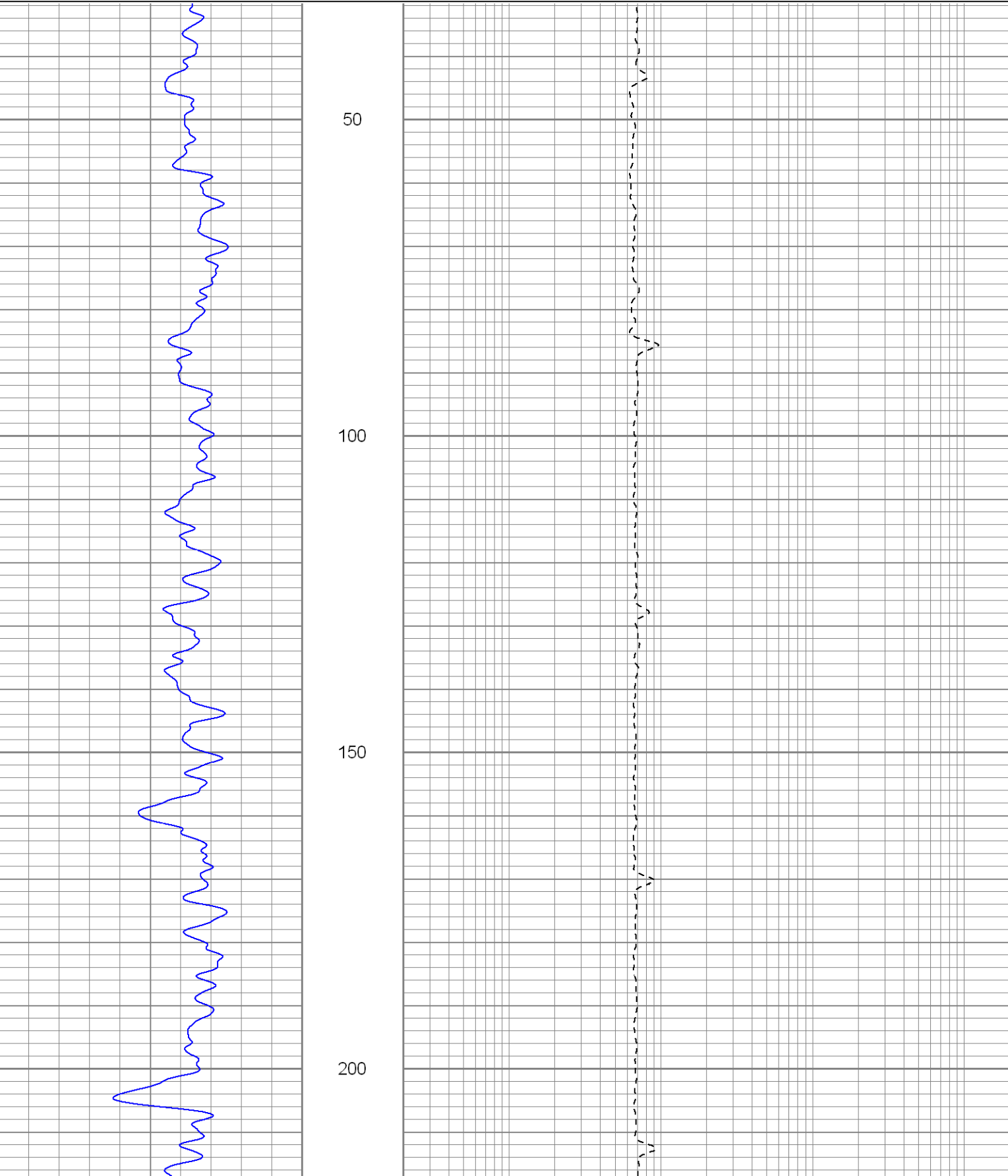


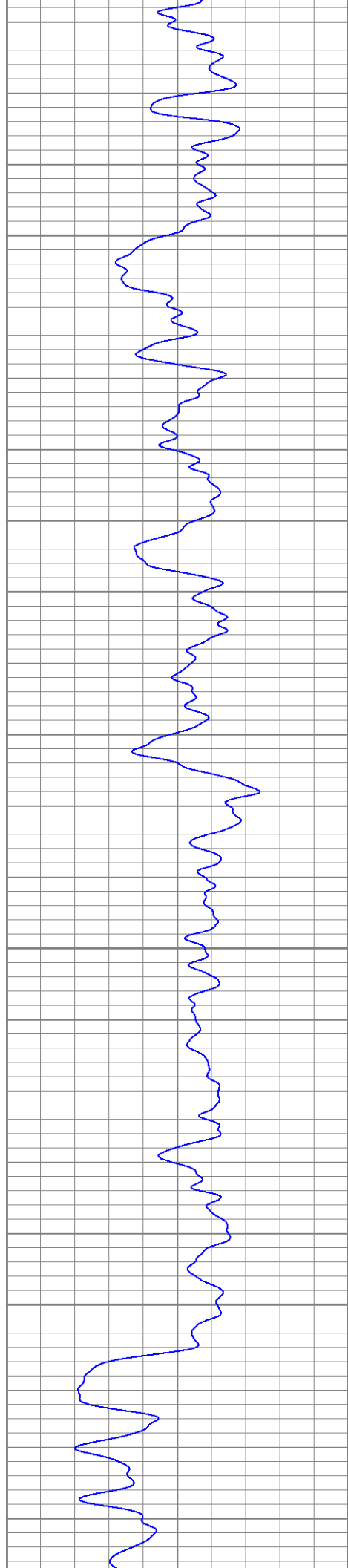
SUPERIOR
Black Lick, Pa.
Mercer, Pa.
Wooster, Oh.
Cleveland, Ok.
Trinidad, Co.

Main Pass

Database File: xtohr2312.db
Dataset Pathname: pass4.1
Presentation Format: dil
Dataset Creation: Fri Apr 25 17:10:34 2008 by Calc Open-Cased 070814
Charted by: Depth in Feet scaled 1:240

0	GR (GAPI)	200	0.2	RILM (Ohm-m)	2000
-200	SP (mV)	0	0.2	RILD (Ohm-m)	2000
			0.2	RLL3 (Ohm-m)	2000



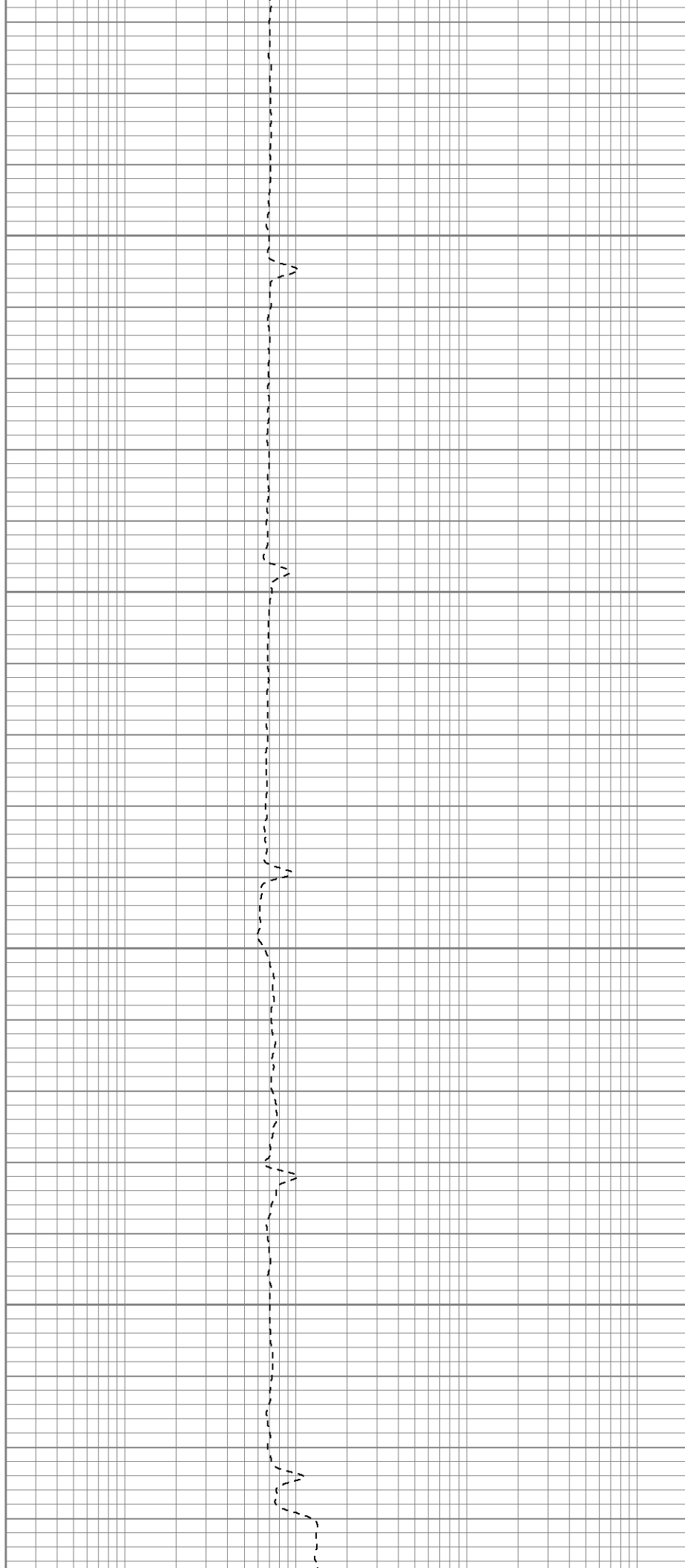


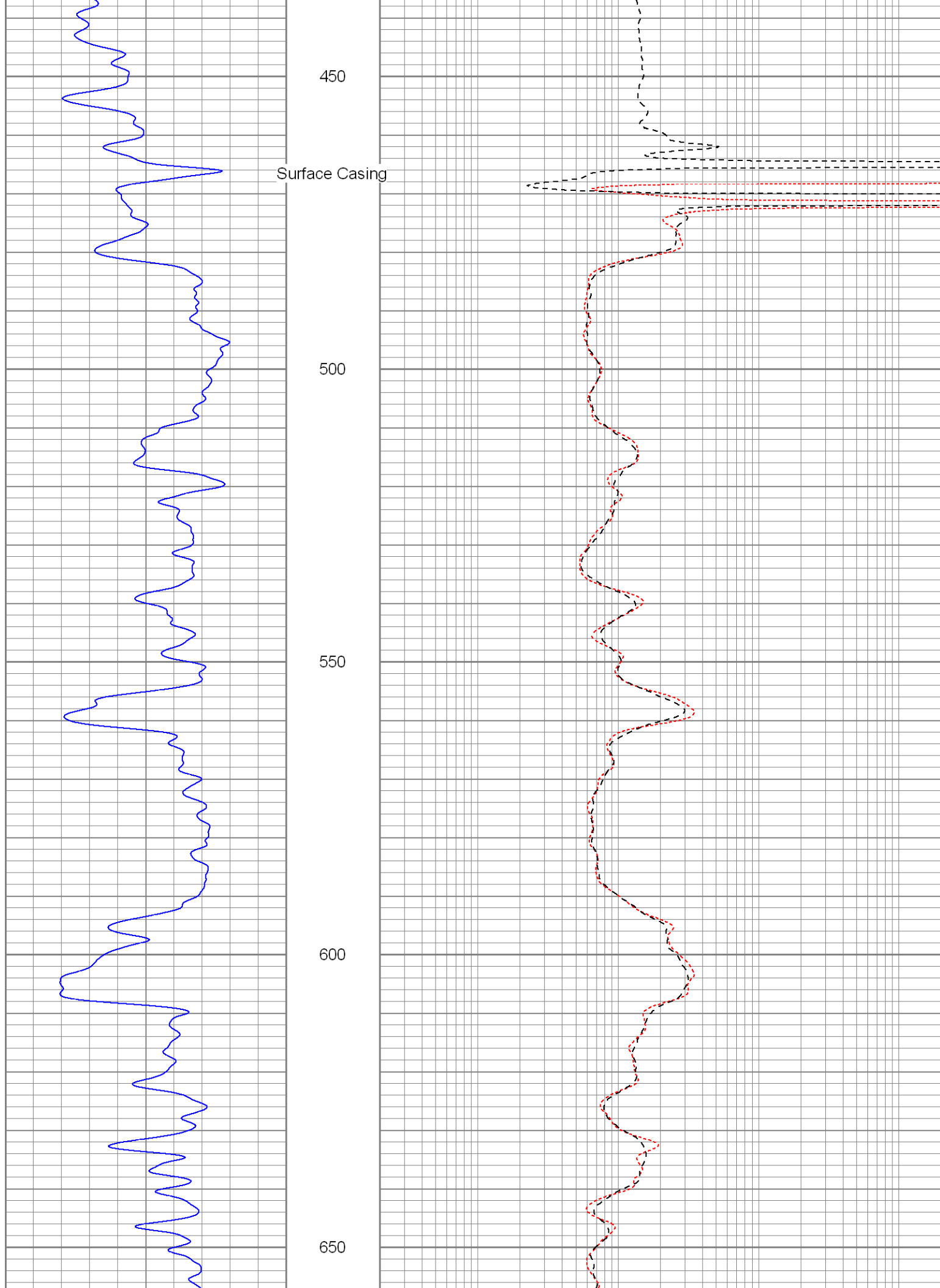
250

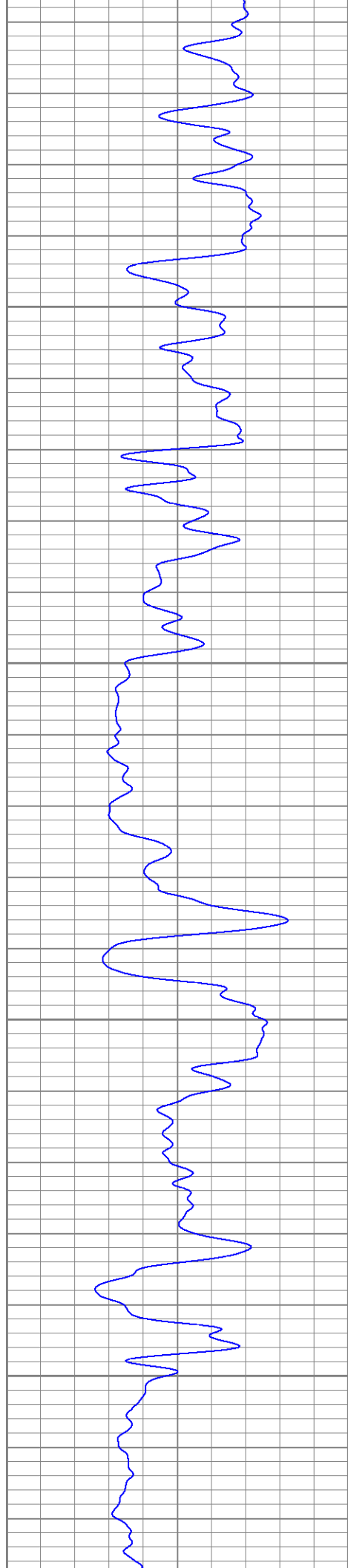
300

350

400





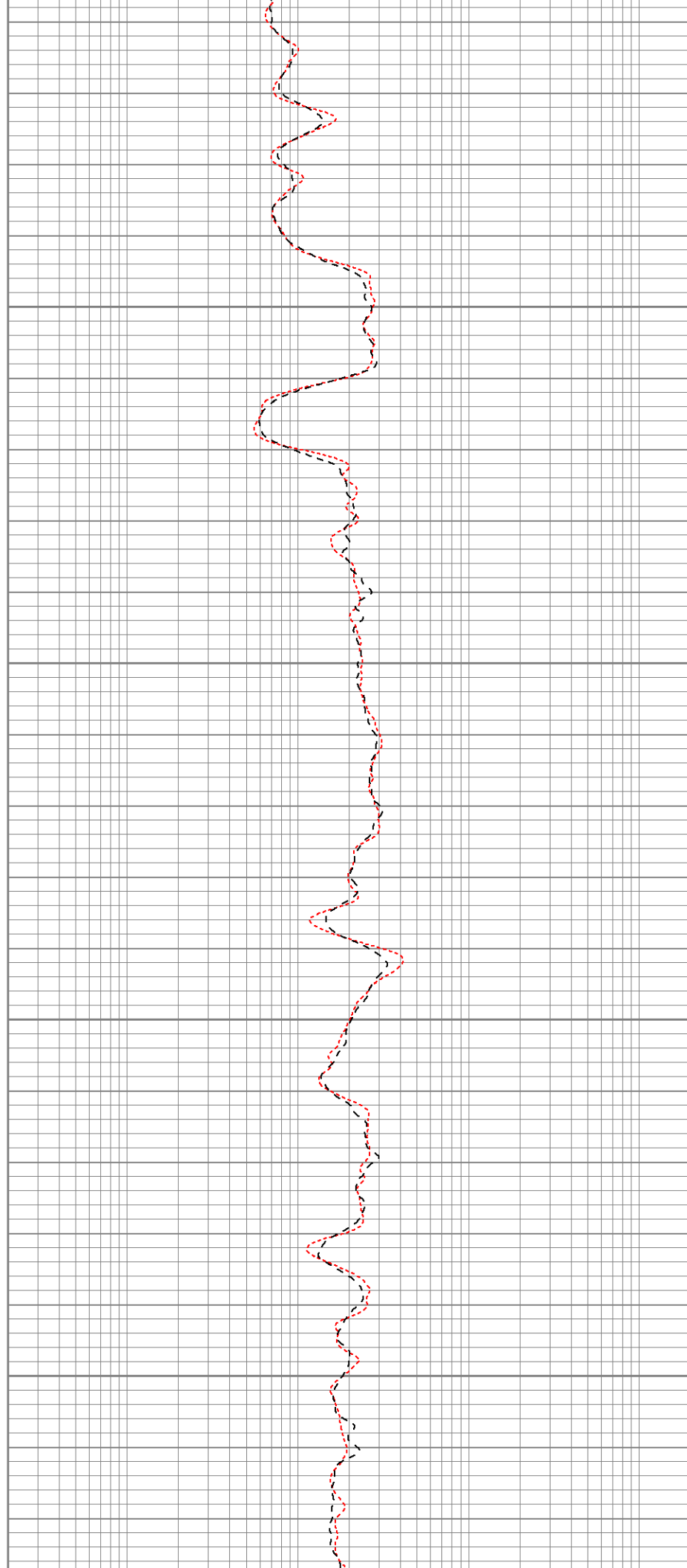


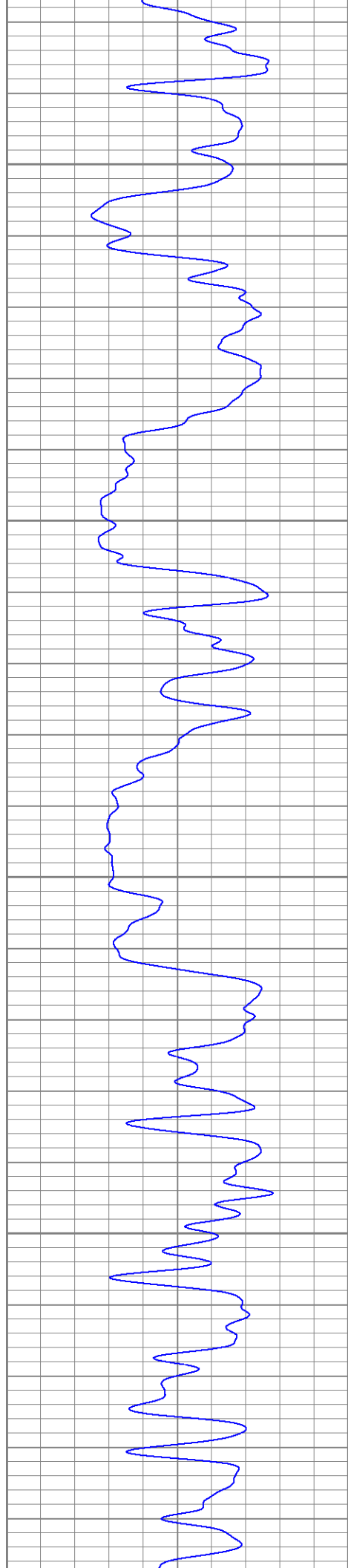
700

750

800

850



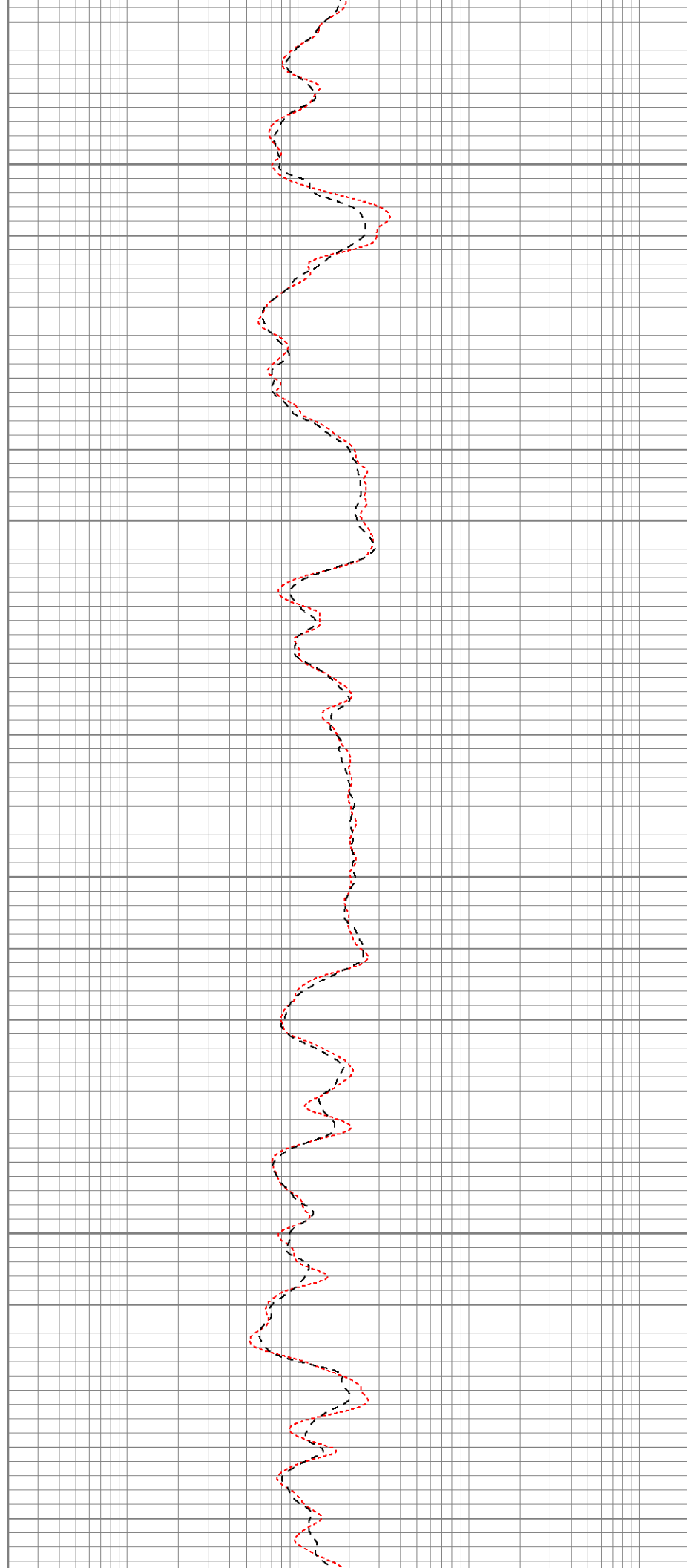


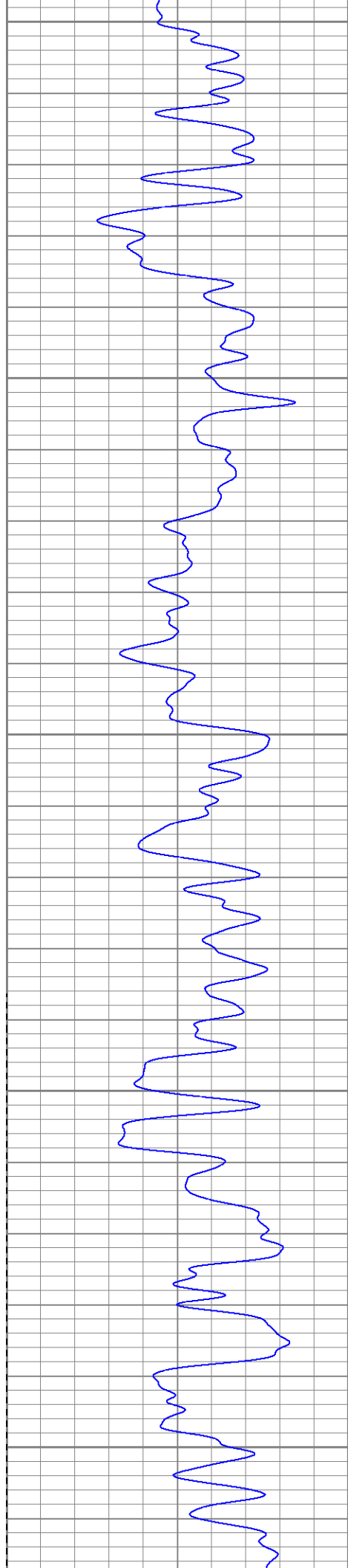
900

950

1000

1050





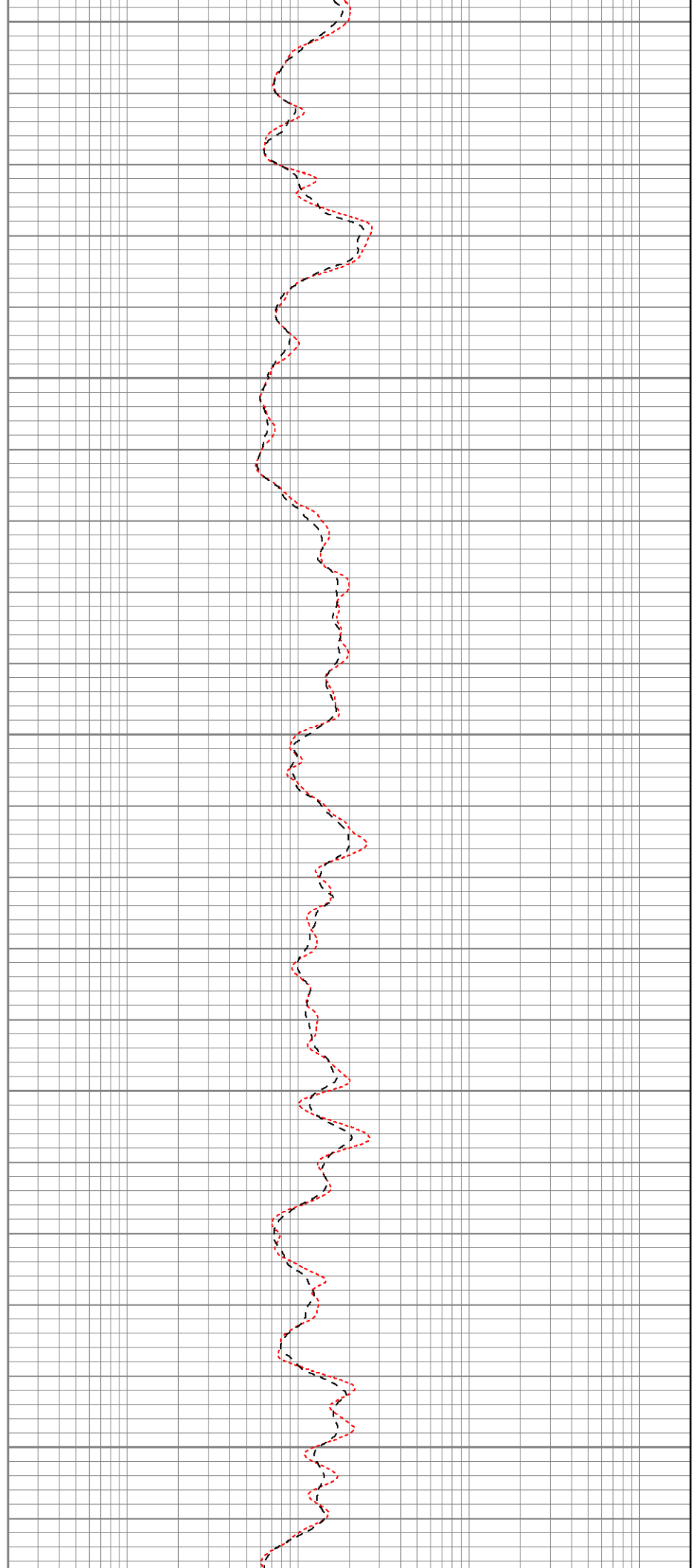
1100

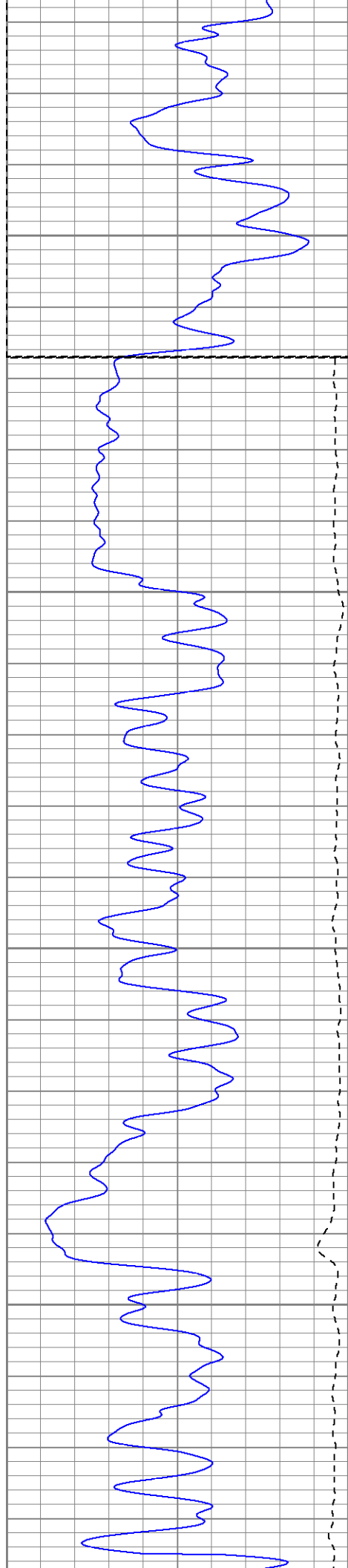
1150

1200

1250

1300





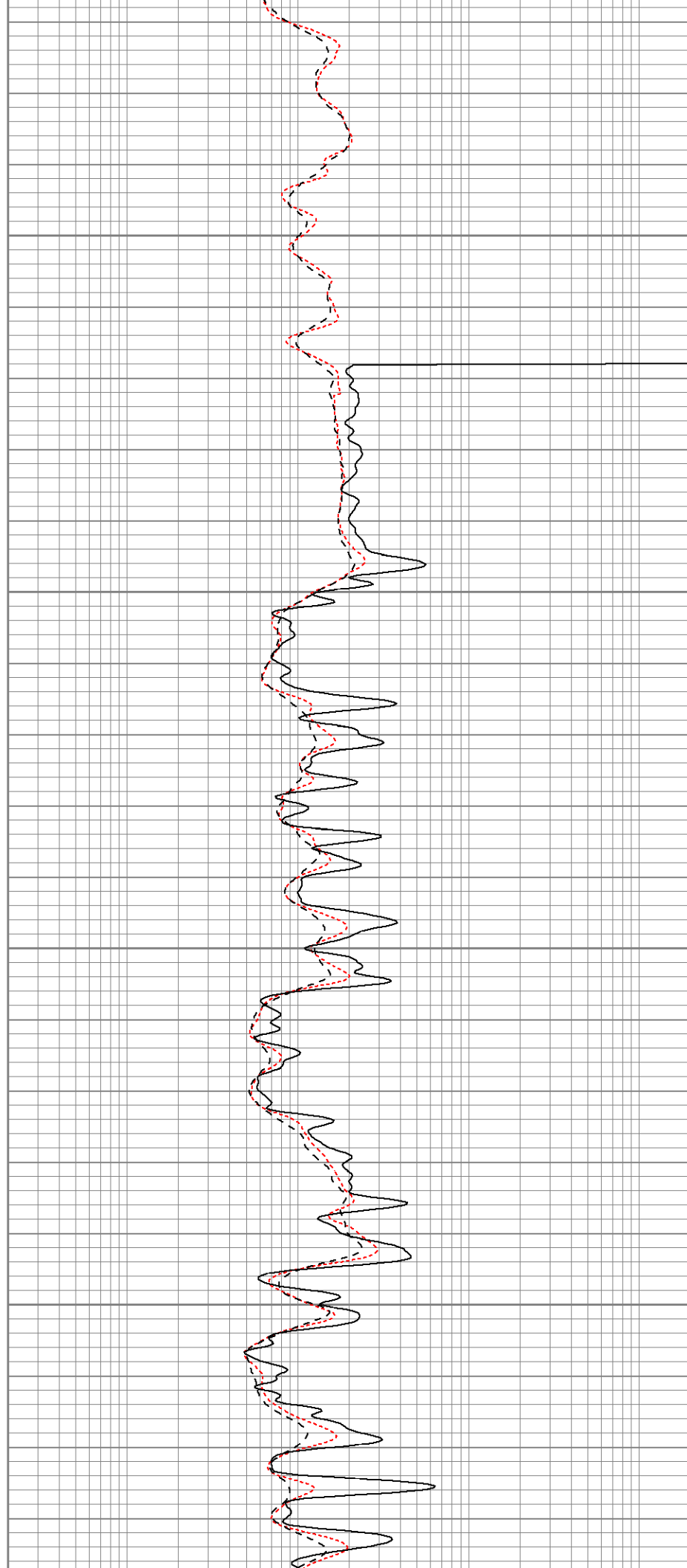
1350

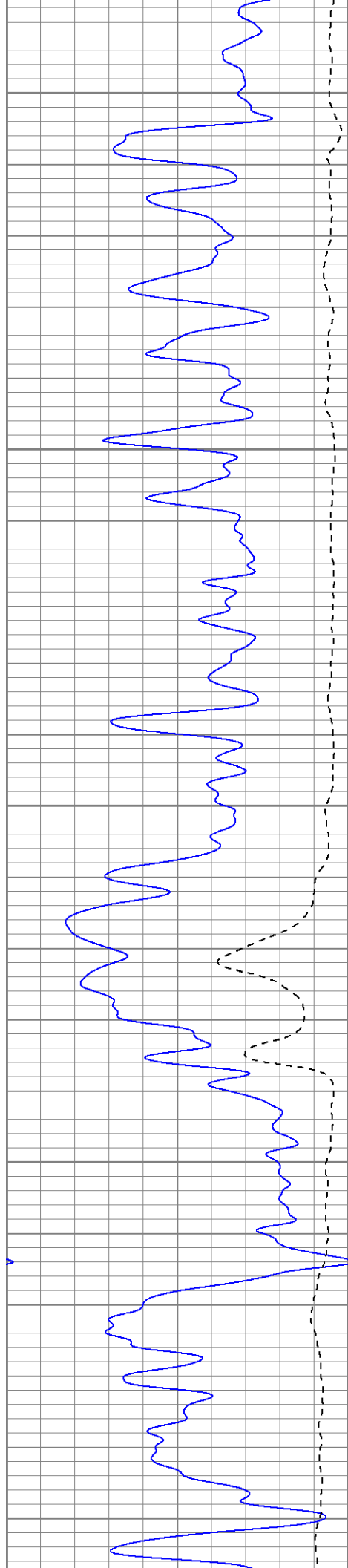
Fluid Level

1400

1450

1500





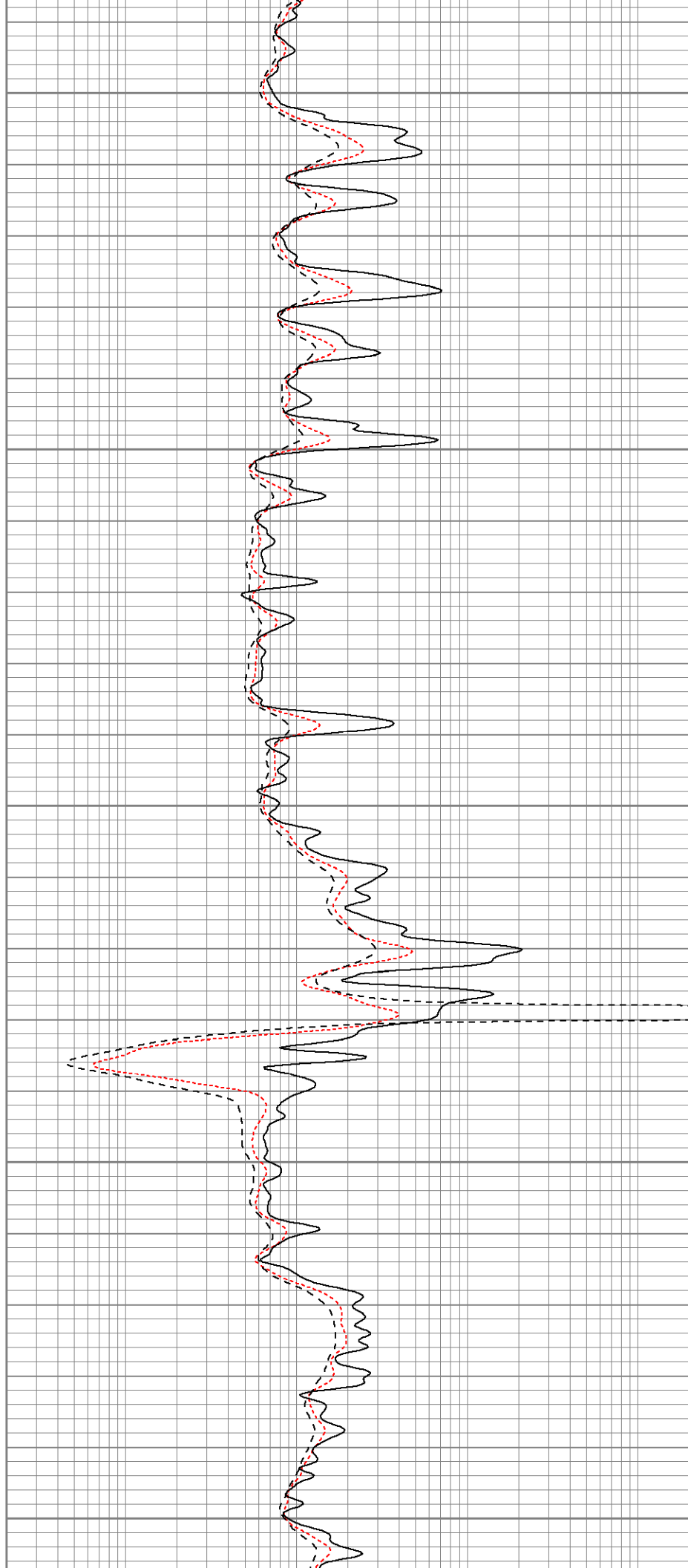
1550

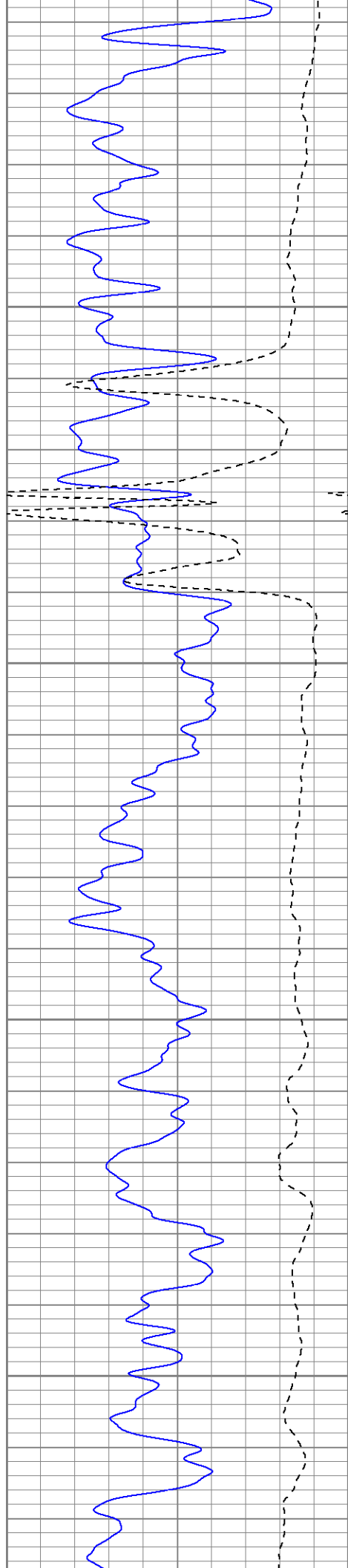
1600

1650

1700

1750



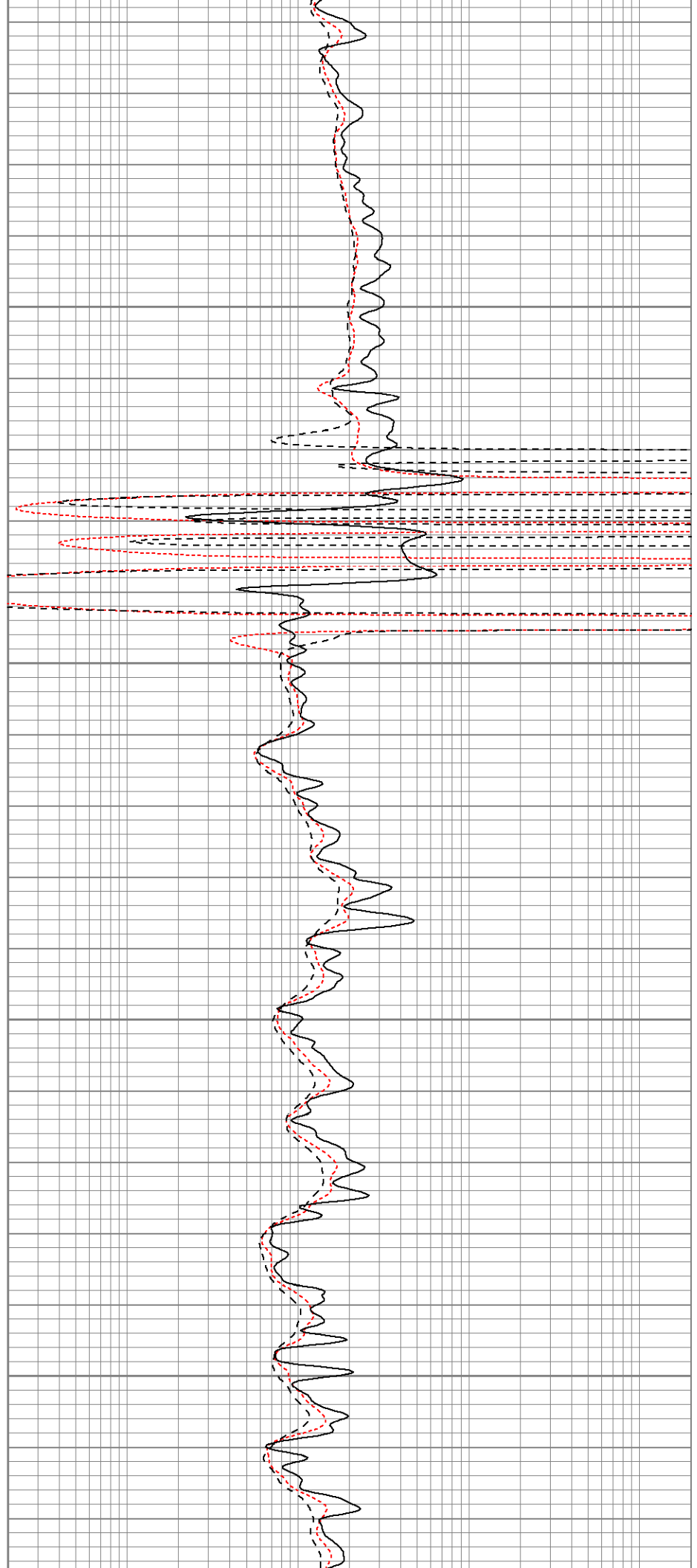


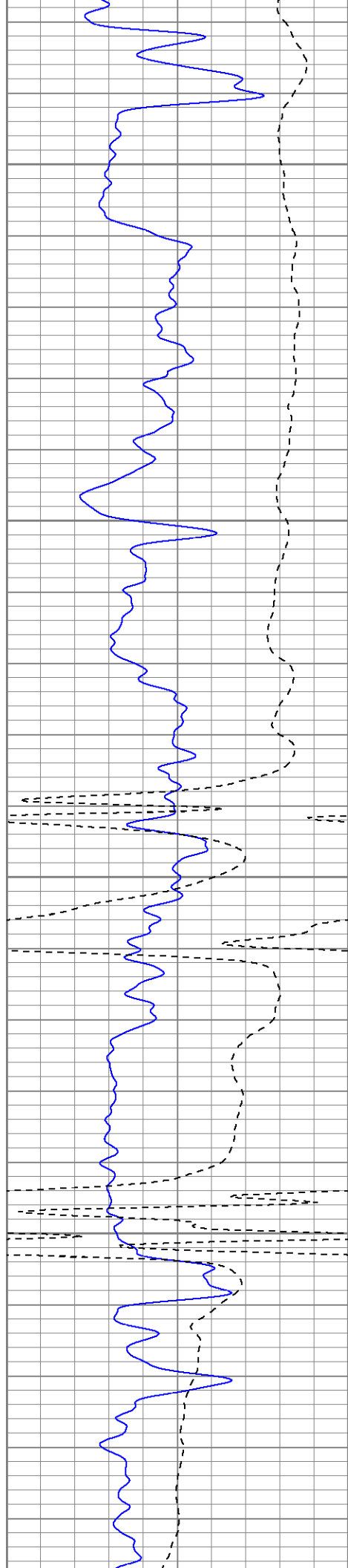
1800

1850

1900

1950



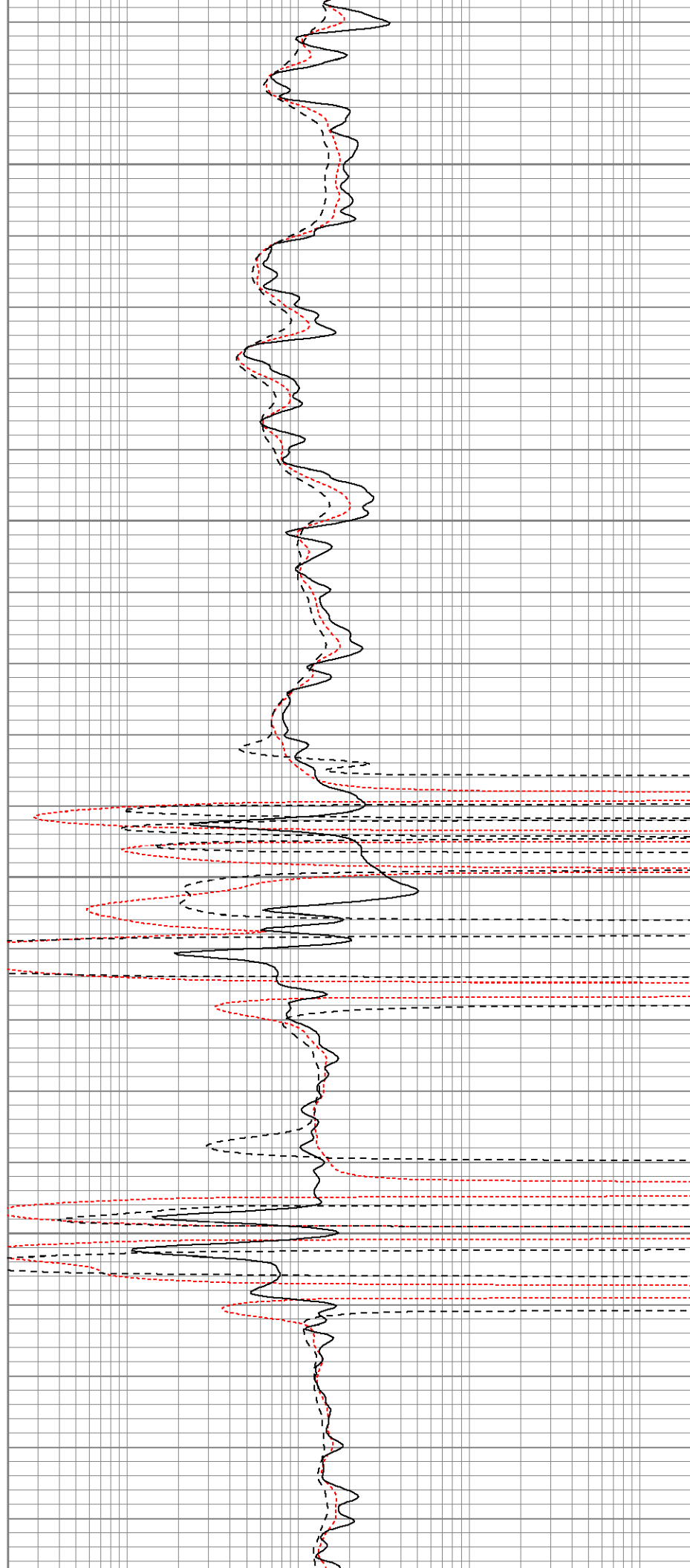


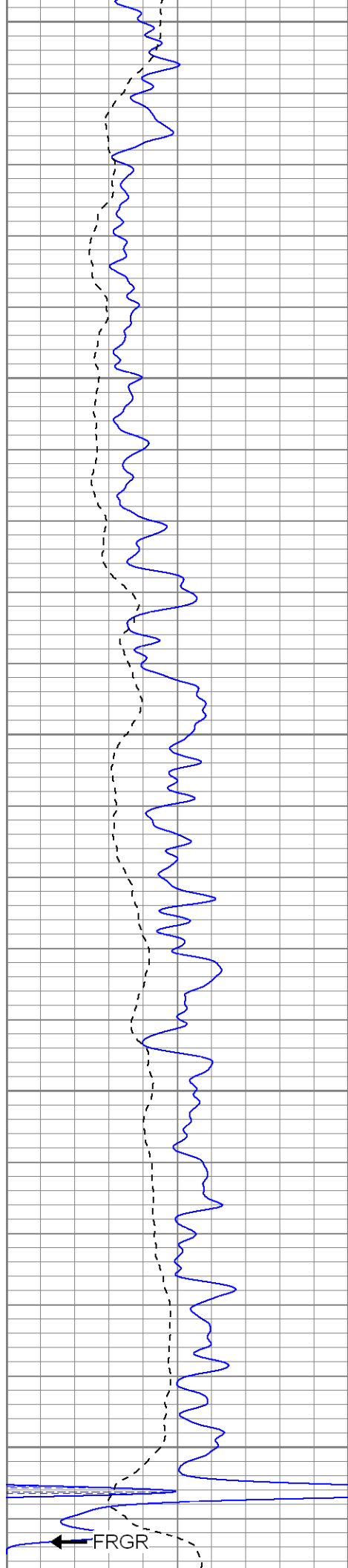
2000

2050

2100

2150





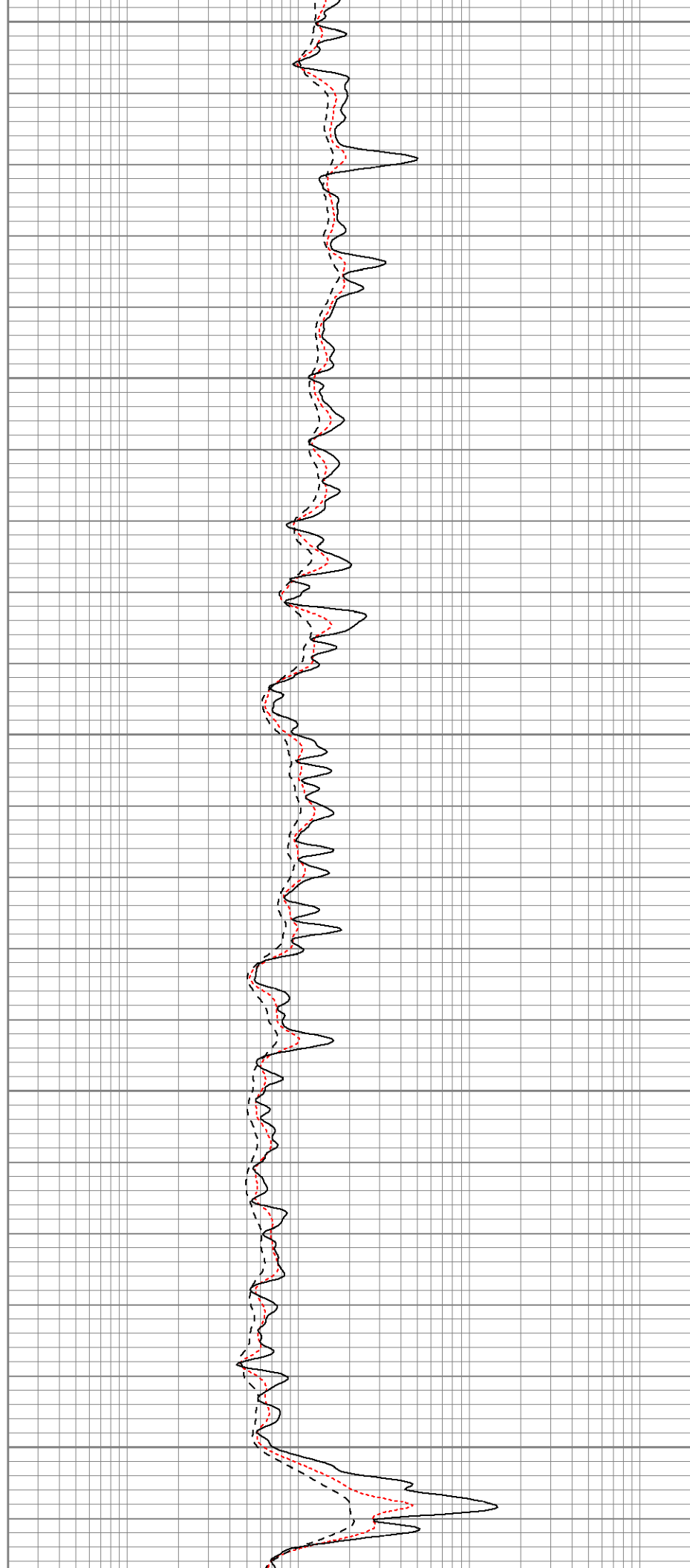
2200

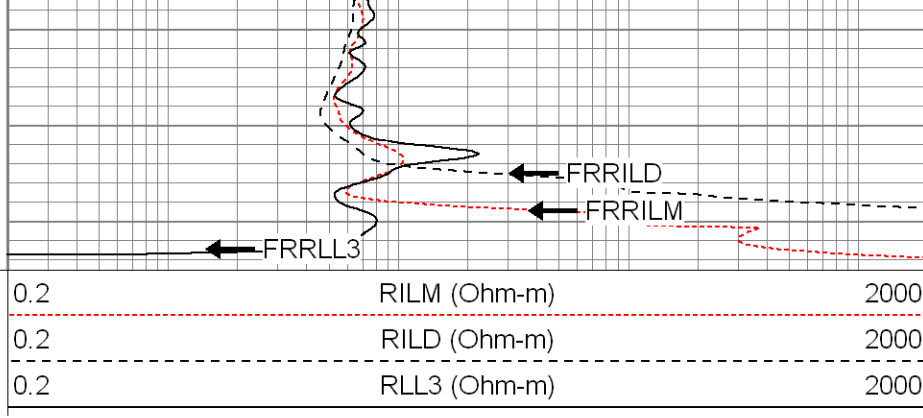
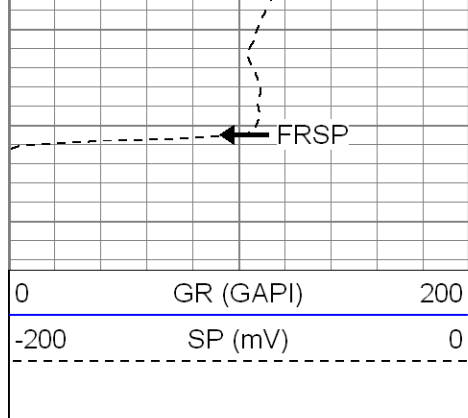
2250

2300

2350

2400



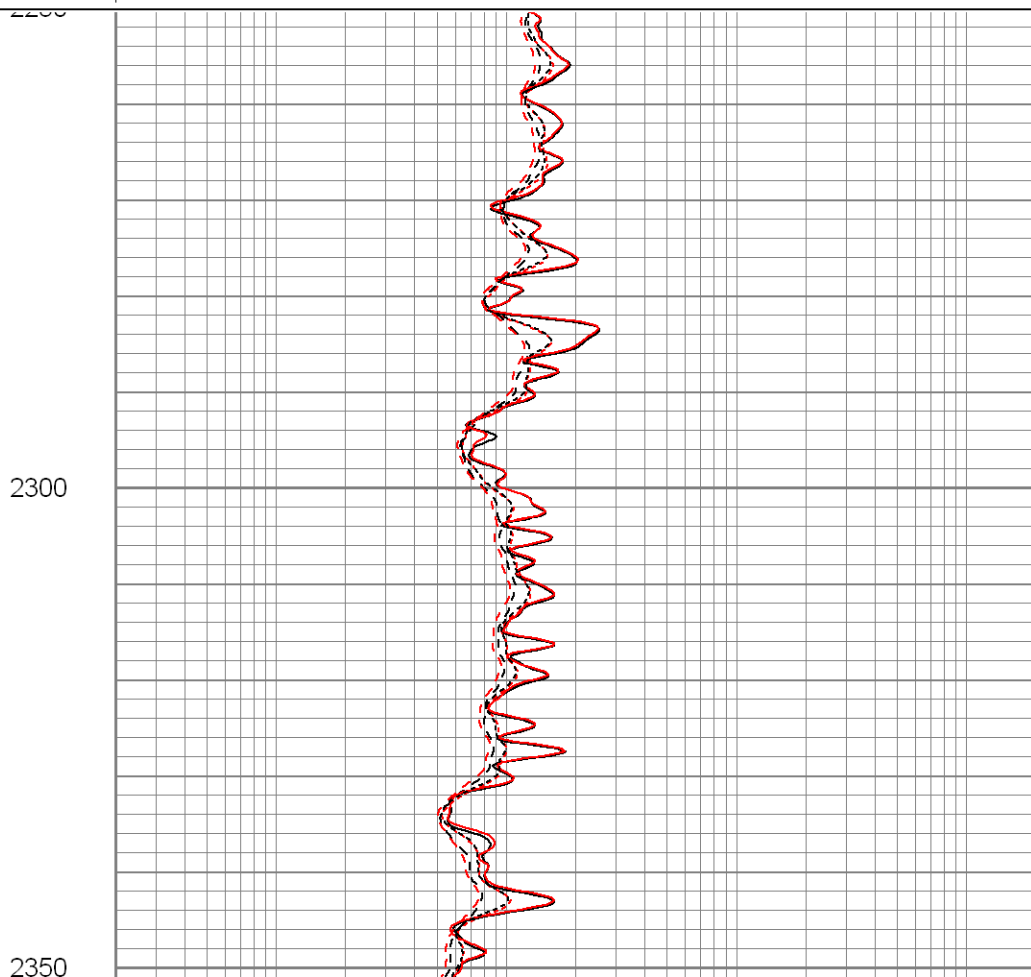
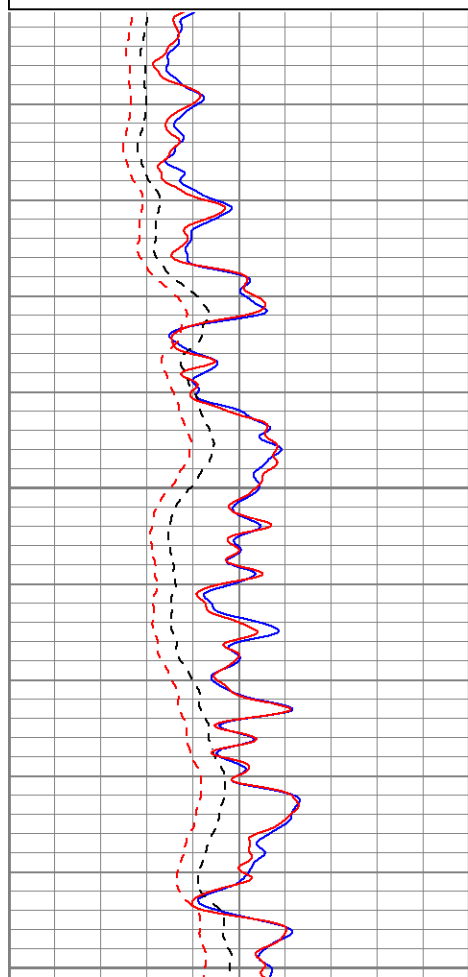
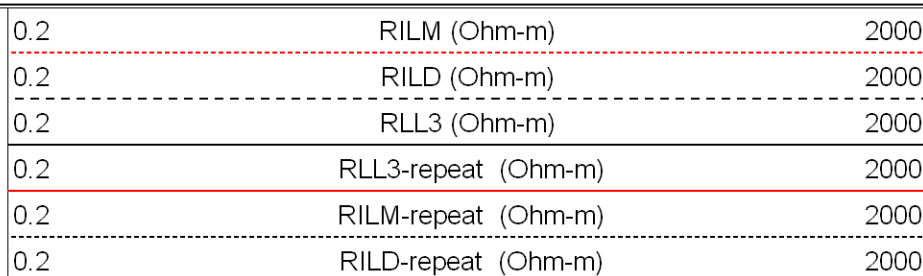
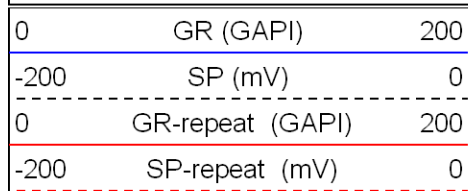


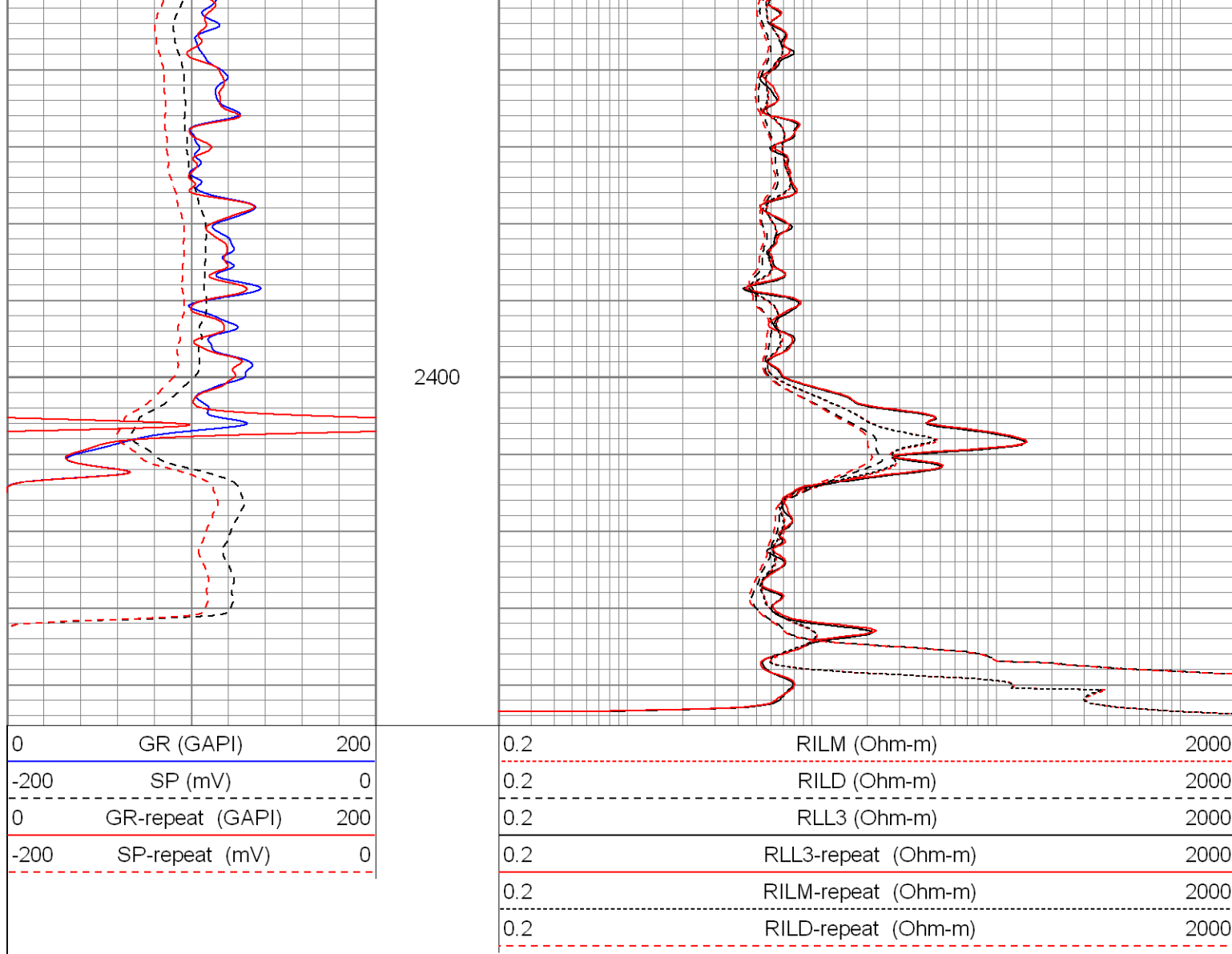
SUPERIOR

Black Lick, Pa.
Mercer, Pa.
Wooster, Oh.
Cleveland, Ok.
Trinidad, Co.

Repeat Pass

Database File: xtohr2312.db
Dataset Pathname: pass2.1
Presentation Format: dil
Dataset Creation: Fri Apr 25 15:16:06 2008 by Calc Open-Cased 070814
Charted by: Depth in Feet scaled 1:240





Calibration Report										
Database File:		xtohr2312.db								
Dataset Pathname:		pass1								
Dataset Creation:		Fri Apr 25 14:16:09 2008 by Log Open-Cased 070814								
Dual Induction Calibration Report										
Serial-Model:		5375-G								
Surface Cal Performed:		Tue Apr 01 11:00:37 2008								
Downhole Cal Performed:		Tue Apr 01 11:01:24 2008								
Surface Calibration										
		Readings					References			
Loop:	Air	Loop		Air	Loop		m	b		
Deep	0.001	0.620	V	0.000	500.000	mmho-m	807.237	-0.611		
Medium	0.003	0.742	V	0.000	550.000	mmho-m	743.848	-2.179		
Internal:	Zero	Cal		Zero	Cal		m	b		
Deep	0.001	0.620	V	0.000	500.000	mmho-m	807.141	-0.502		
Medium	0.003	0.742	V	0.000	550.000	mmho-m	743.959	-2.189		
Downhole Calibration										
		Readings					References			
Loop:	Air	Loop		Air	Loop		m	b		

Readings				References			Results	
Internal:	Zero	Cal		Zero	Cal		m	b
Deep	-0.493	500.241	mmho-m	-0.108	499.951	mmho-m	0.999	0.384
Medium	0.182	550.341	mmho-m	0.009	549.927	mmho-m	1.000	-0.172
Shallow	2.506	0.008	V	500.000	2.000	Ohm-m	124.000	-3.000
Temperature Calibration Report								
Serial Number:		2542T						
Tool Model:		CDLP						
Performed:		Wed Apr 09 15:14:20 2008						
			Reference	Reading				
Low Reference:		55.00	degF	3.11	V			
High Reference:		160.00	degF	5.35	V			
Gain:		46.88						
Offset:		-90.78						
Delta Spacing		1						
Compensated Density Calibration Report								
Serial-Model:		2542-T2						
Source / Verifier:		/						
Master Calibration Performed:		Fri Apr 04 08:43:29 2008						
Master Calibration								
		Density		Far Detector		Near Detector		
Magnesium		1.710	g/cc		725.64	339.44	cps	
Aluminum		2.590	g/cc		162.65	232.88	cps	
Spine Angle = 75.86				Density/Spine Ratio = 0.571				
		Size		Reading				
Small Ring		8.00	in		1.33	V		
Large Ring		14.00	in		2.67	V		
Gamma Ray Calibration Report								
Serial Number:		2001						
Tool Model:		OH						
Performed:		Fri Apr 04 09:53:13 2008						
Calibrator Value:		1.0	GAPI					
Background Reading:		0.0	cps					
Calibrator Reading:		1.0	cps					
Sensitivity:		0.2500	GAPI/cps					
Neutron Calibration Report								
Serial Number:		5108						
Tool Model:		PROBE						
Performed:		Wed Apr 09 15:10:14 2008						
Calibrator Value:		1	NAPI					
Calibrator Reading:		1	cps					
Sensitivity:		1	NAPI/cps					

[illegible]