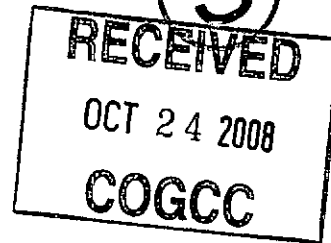


BLANCO

Geological Services LLC



Scale 1:240 (5"=100') Imperial



KL

Well Name: **Magnum 43-26** ✓
Location: **NE/SE Sec 26 T32N R68W** ✓
Licence Number: **05-071-09182-00**
Spud Date: **08/05/08**
Surface Coordinates: **1784' FSL & 213' FEL**

Region: **Purgatoire River**
Drilling Completed: **08/06/08**

Bottom Hole Coordinates:

Ground Elevation (ft): **8383'** K.B. Elevation (ft): **8388'**
Logged Interval (ft): **1100'** To: **3050'** Total Depth (ft): **3050'**
Formation: **Raton / Vermejo / Trinidad**
Type of Drilling Fluid: **Aerated Water**

Printed by STRIP.LOG from WellSight Systems 1-800-447-1534 www.WellSight.com

OPERATOR

Company: **Pioneer Natural Resources USA, Inc.**
Address: **1401 17th Street Suite 1200**
Denver CO 80202

GEOLOGIST

Name: **Robert Wick, Leo Carrasco, Jonh Castellano.**
Company: **BLANCO Geological Services LLC**
Address: **806 Robinson Ave.**
Trinidad CO 81020
(719) 846-3364

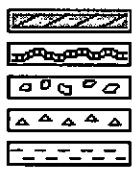
Rig

Pense Rig # 3

Comments

8 5/8" #24 Surface Casing set to 1047'

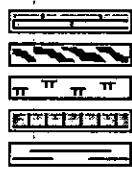
ROCK TYPES



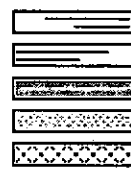
Anhy
Bent
Brec
Cht
Clyst



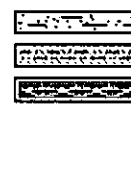
Coal
Congl
Dol
Gyp
Igne



Lmst
Meta
Mrlst
Salt
Shale



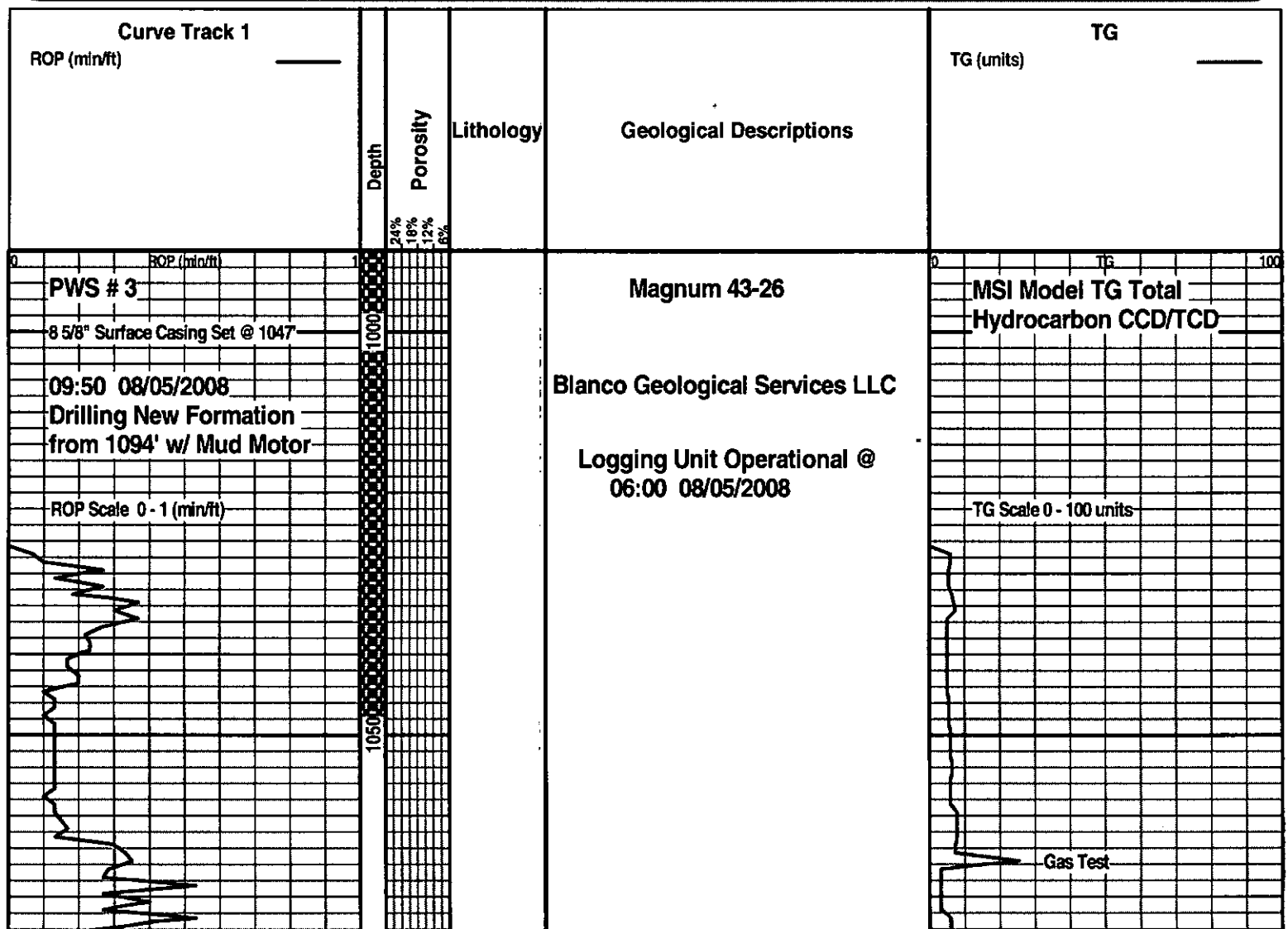
Shcol
Shgy
Sltst
Ss
Till

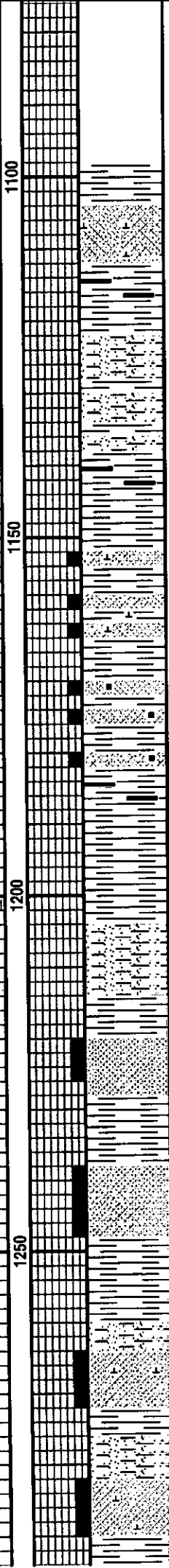
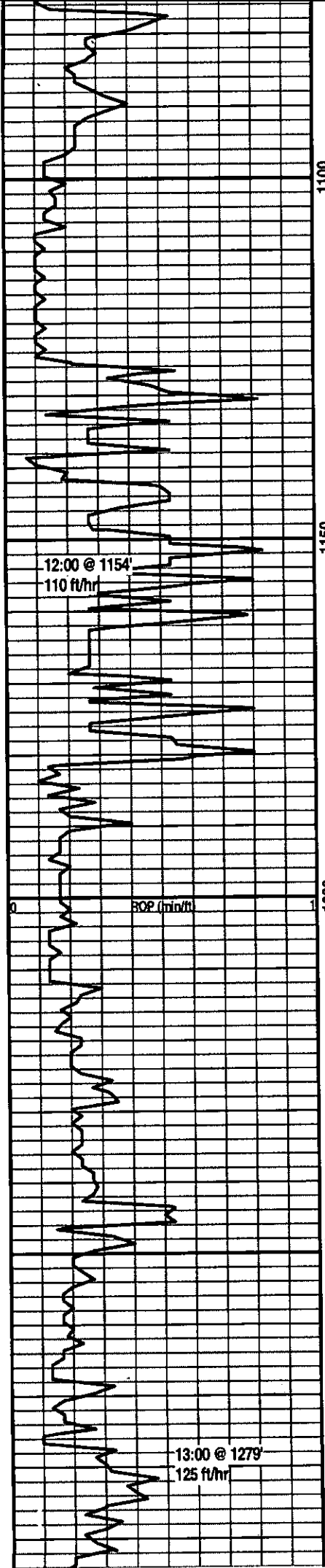


sandysh
Clayey ss
Carb sh

MINERAL		FOSSIL		TEXTURE
Anhy	Gyp	Algae	Ostra	Sltstrg
Arggrn	Hvymin	Amph	Pelec	Ssstrg
Arg	Kaol	Belm	Pellet	
Bent	Marl	Bioclst	Pisolite	
Bit	Minxl	Brach	Plant	
Breccfrag	Nodule	Bryozoa	Strom	
Calc	Phos	Cephal		
Carb	Pyr	Coral	STRINGER	
Chtdk	Salt	Crin	Anhy	
Chtlt	Sandy	Echin	Arg	
Dol	Silt	Fish	Bent	
Feldspar	Sil	Foram	Coal	
Ferrpel	Sulphur	Fossil	Dol	
Ferr	Tuff	Gastro	Gyp	
Glau		Oolite	Ls	
			Mrst	

POROSITY TYPE	<input checked="" type="checkbox"/> Vuggy	ROUNDING	<input checked="" type="checkbox"/> Spotted	<input checked="" type="checkbox"/> Cv-v
<input checked="" type="checkbox"/> Earthy		<input checked="" type="checkbox"/> Rounded	<input checked="" type="checkbox"/> Ques	<input checked="" type="checkbox"/> Cv-c
<input checked="" type="checkbox"/> Fenest	SORTING	<input checked="" type="checkbox"/> Subrnd	<input checked="" type="checkbox"/> Dead	
<input checked="" type="checkbox"/> Fracture	<input checked="" type="checkbox"/> Well	<input checked="" type="checkbox"/> Subang	INTERVALS	EVENTS
<input checked="" type="checkbox"/> Inter	<input checked="" type="checkbox"/> Moderate	<input checked="" type="checkbox"/> Angular	<input checked="" type="checkbox"/> Core	<input checked="" type="checkbox"/> Rft
<input checked="" type="checkbox"/> Moldic	<input checked="" type="checkbox"/> Poor	OIL SHOWS	<input checked="" type="checkbox"/> Dst	<input checked="" type="checkbox"/> Sidewall
<input checked="" type="checkbox"/> Organic		<input checked="" type="checkbox"/> Even	<input checked="" type="checkbox"/> Srfcsg	<input checked="" type="checkbox"/> Srfcsg
<input checked="" type="checkbox"/> Pinpoint				





Began Sampling @ 1100'

SS: pred wh, lt gy, m-cr gr, sbmd-sbang, p srt, p por, calc, tr mic. Coal stringer.

SNDYSH: lt bm, lt-m gy, frm, sbblky, sl calc, intb w/ m gy, sbblky-blky, hd, sl sndy, ppty, n calc, SH.

SS: lt gy, firm, f-m gr, p srt, p por, calc, abnt mic, intb W/ m gy, sbblky, sl calc, ppty, sl sndy SH.

SS: lt gy, firm, f gr, sbmd, mor srt, mod por, sl calc, carb mat incl.

SH: m-drk gy, subblky, firm, sbppty, n calc, sl sndy ip, blk, firm, sbblk, waxy, conch frac COAL.

SNDYSH: lt-m gy, firm, sbblky, n calc, w/ m gy, sbblky-blky, firm, sl sndy, ppty, n calc, SH.

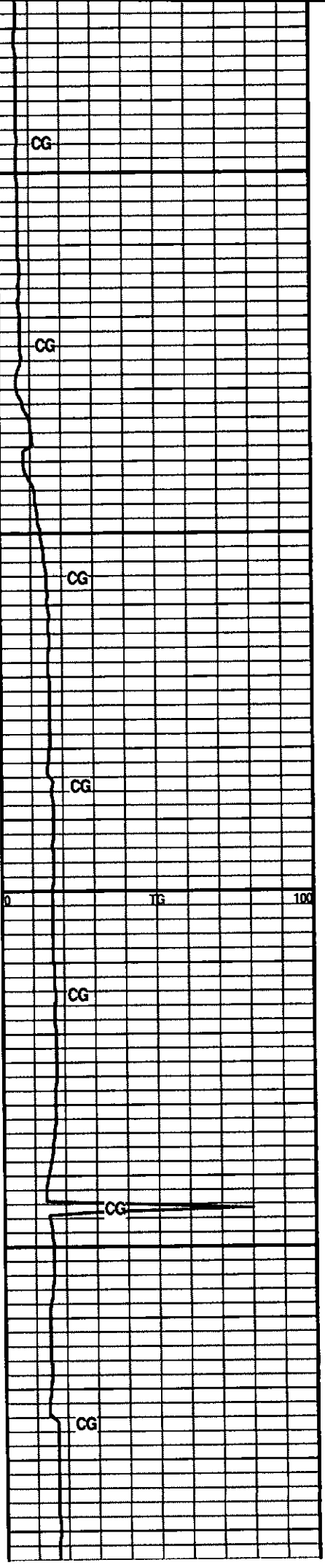
SS: wh, lt gy, qtzd, firm, f-m gr, sbmd, sbang, calc, mod srt, p por.

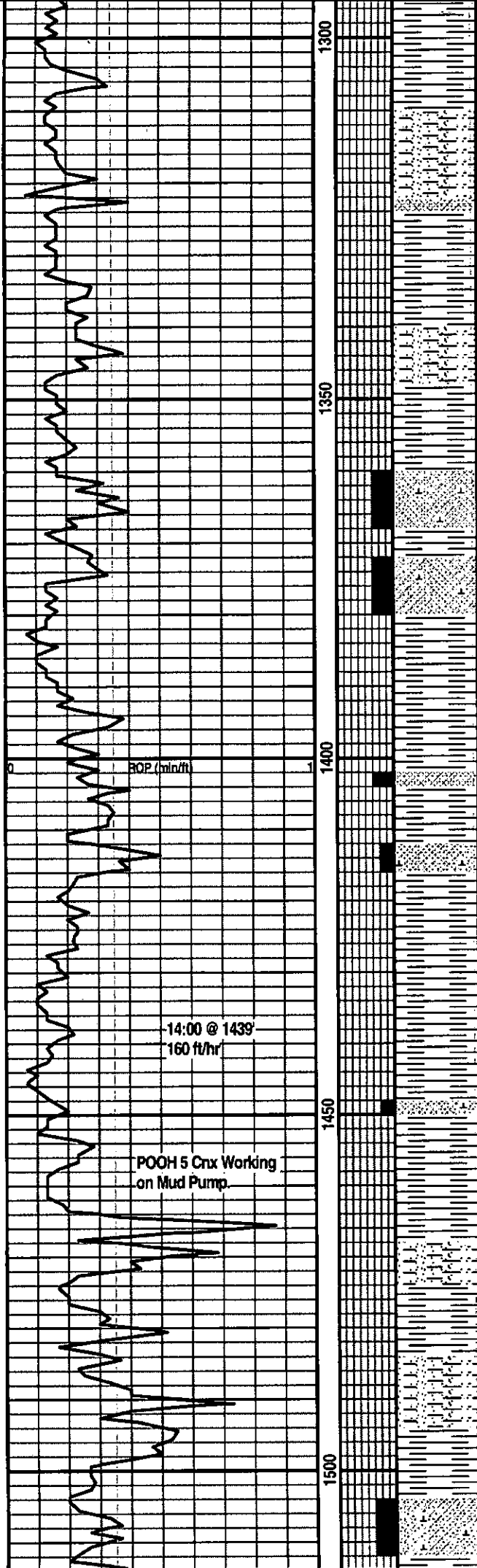
SS: wh, lt gy, qtzd, firm, f-m gr, sbmd, sbang, calc, mod srt, p por, abnt 1st m gr qtz.

SH: m gy, firm, sbblky, sbppty, n calc, sl sndy, grdg to SNDYSH.

SS: wh, lt gy, firm, f-m gr, sbmd, sbang, calc, mod srt, p por.

SS: wh, lt gy, firm, pred m gr, sbmd, sbang, calc, mod srt, p por.





SH: lt-m gy, firm, blkly-sbbilky, subplty, n calc, sl sndy grd to SNDYSH.

SNDYSH: lt-m gy, firm, sbbilky, n calc, w/ m gy, sbbilky-blky, firm, sl sndy, plty, n calc, SH.

SH: lt-m gy, firm, blkly-sbbilky, subplty, n calc, sl sndy.

SH: lt-m gy, firm, blkly-sbbilky, subplty, n calc, w/ lt gy, firm, f-m gr, sbmd, calc, reg srt, reg por, SS.

SS: lt gy, firm-hd, f gr, sbang, mod srt, mod por, calc, tr mic.

SH: lt-m gy, firm, blkly-sbbilky, subplty, n calc.

SH: lt gy, firm, sbbilky, sbplty, n calc, sl sndy, w/lt gy, wh ip, firm, f gr, sbang, calc, mod srt, mod por SS.

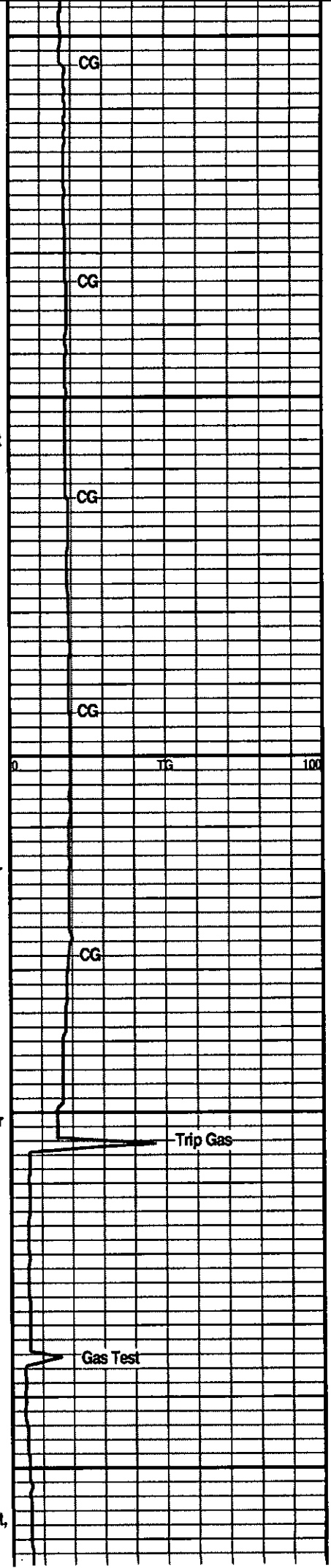
SH: drk gy-blky, sft, sbbilky, plty, n calc.

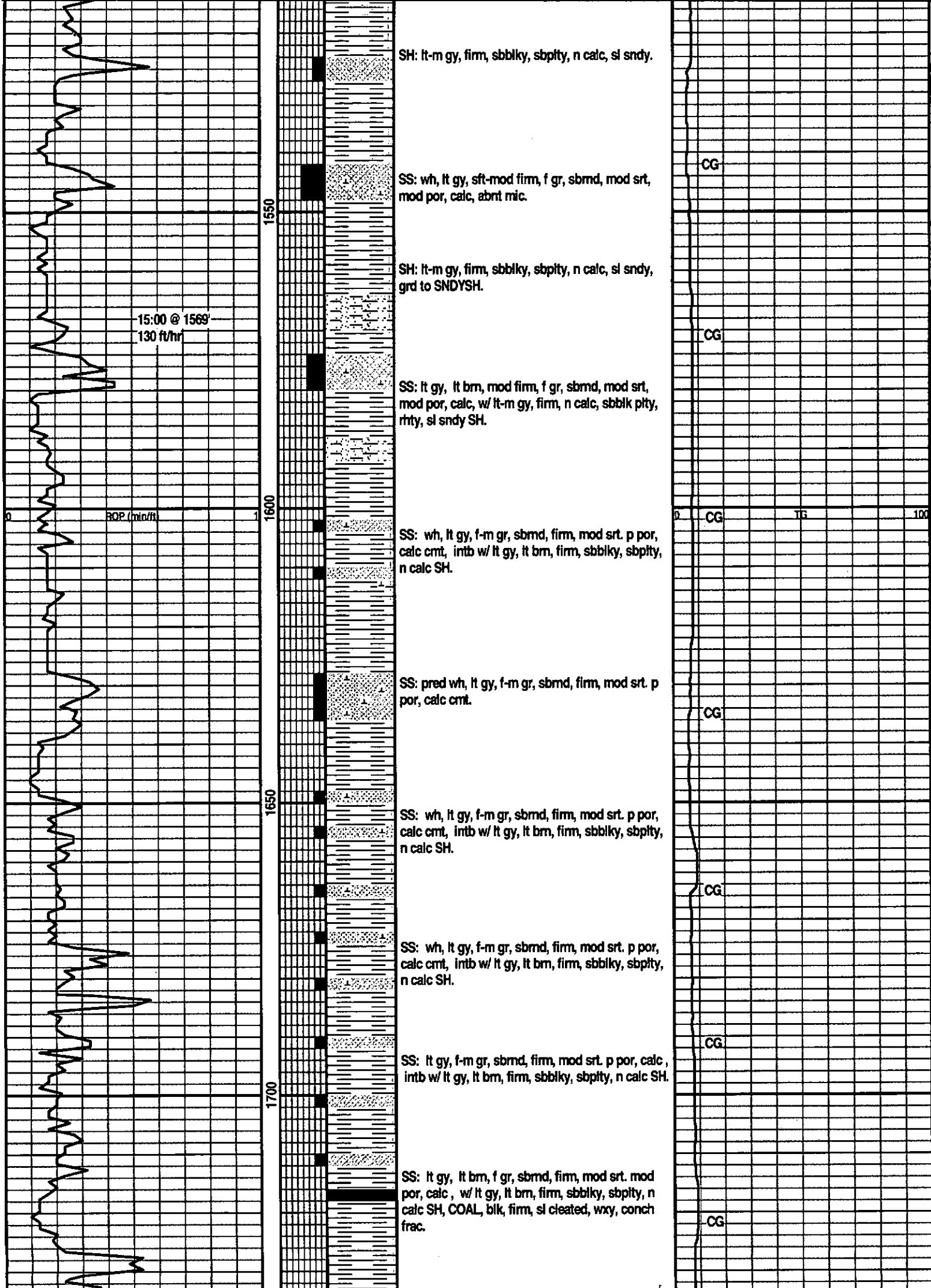
SH: lt gy, firm, sbbilky, sbplty, n calc, sl sndy, w/lt gy, wh ip, firm, f gr, sbang, calc, mod srt, mod por SS.

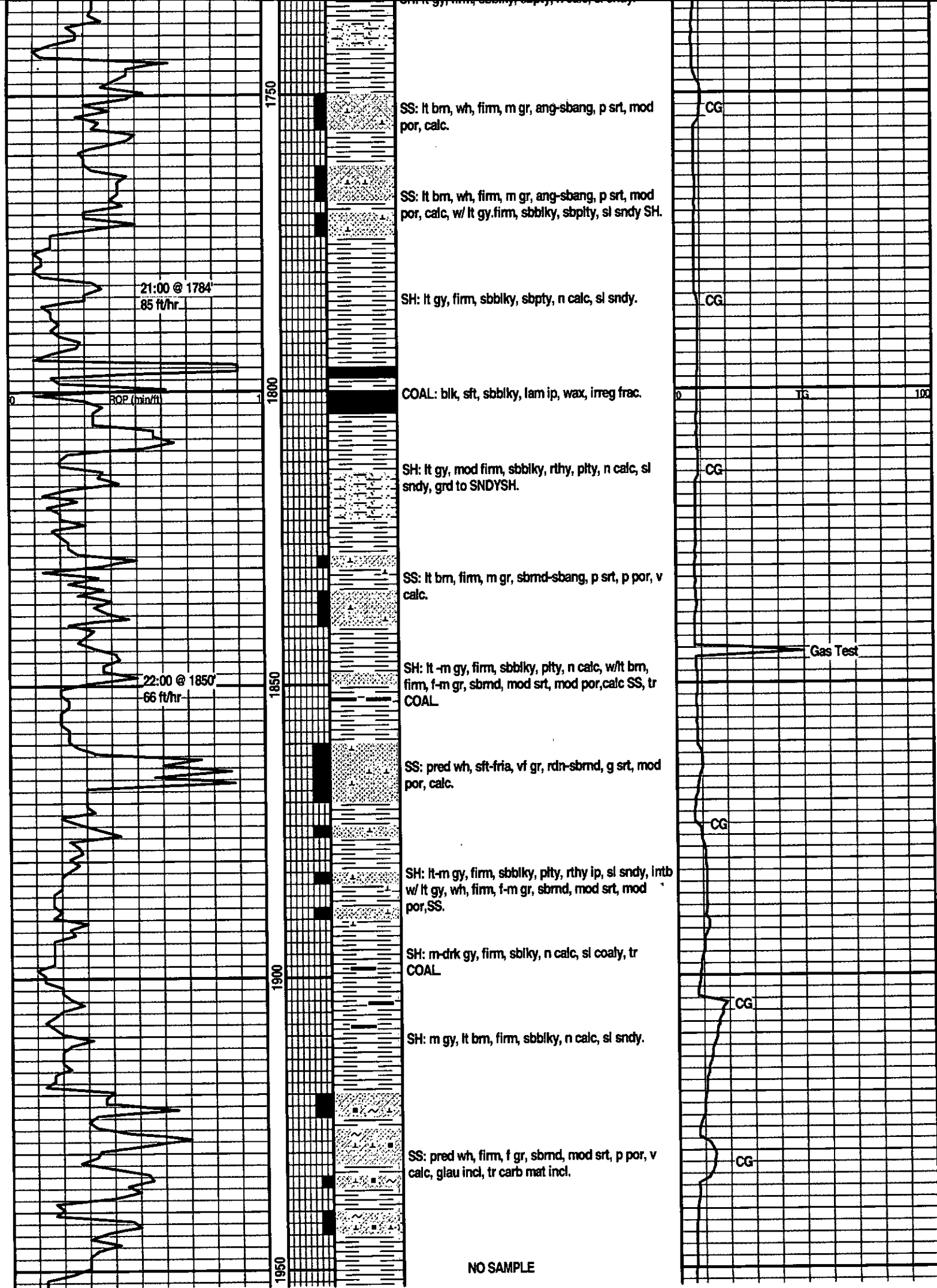
SH: lt gy, firm, sbbilky, sbplty, n calc, sl sndy, grd to SNDYSH.

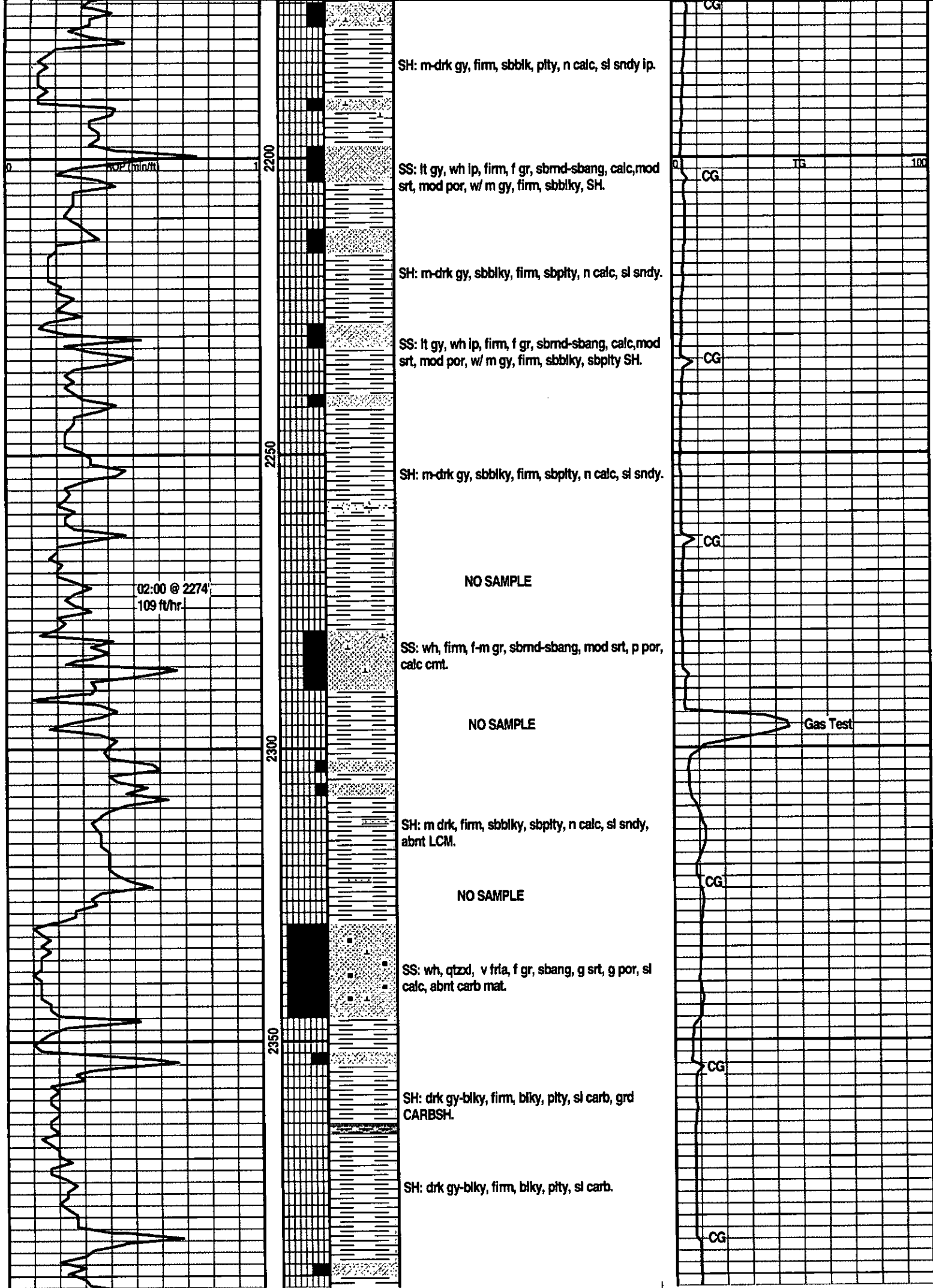
SNDYSH: lt-m gy, firm, sbbilky, n calc, w/ drk gy, sbbilky-blky, sft-firm, sl sndy, plty, n calc, SH.

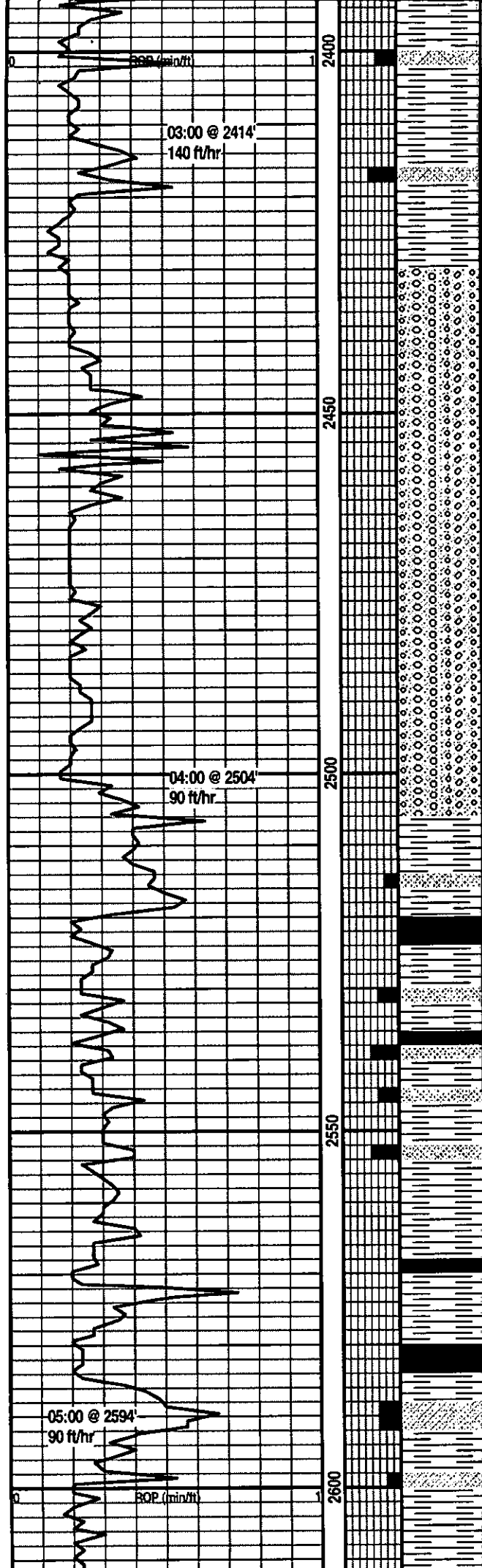
SS: pred wh, sft-v trla, f-m gr, sbmd-sbang, p srt, reg por, v cal.











NO SAMPLE RECOVERY

SH: lt-m gy, firm, sbbilky-biky, sbity, sl sndy, n calc, w/ lt-m gy, firm, f gr, sbmd, mod srt, mod por, SS.

2440' Basal Conglomerate

CONGL: clr, lt gy-bm, fri-p cons, m-c gr, sbmd-md, p srt, wk calc cmt, sil cmt ip, ark,qtz, g por, tr lt gy, firm, sl sndy SH.

CONGL: clr, lt gy-bm, fri-p cons, m-c gr, sbmd-md, p srt, wk calc cmt, sil cmt ip, ark,qtz, g por.

BASE R. CONG 2506'

NO SAMPLE

2520' Vermejo Formation

NO SAMPLE

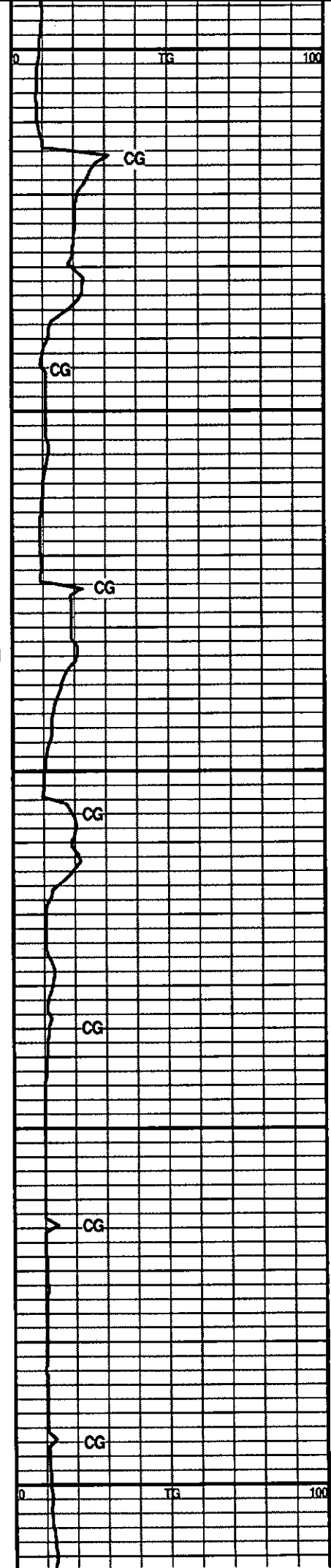
SH: drk gy, firm, sbbilky, sbpity, v sndy, w/ drk gy, firm, f g, sbmd, mod srt, mod por, n calc.

SH: drk gy, firm, sbbilky, sbpity, v sndy, w/ drk gy, firm, f g, sbmd, mod srt, mod por, n calc.

SH: drk gy, blk ip, sbbilky, subpity, v coaly.

SH: drk gy, blk ip, sbbilky, subpity, v coaly.

NO SAMPLE



NO SAMPLE

COAL: blk, firm-hd, blkly, w cleated, conch frac.

SH: drk gy-blk, hd, blkly - sbbly, pty, tr COAL, intb w/ lt bm, m gr, firm, sbang, mod srt, p por, v calc SS.

SH: drk gy-blk, hd, blkly - sbbly, pty, intb w/ lt bm, f-vf gr, firm, sbmd, mod srt, mod por, v calc SS.

SH: drk gy-blk, hd, sbbly, pty, w/ lt bm, f-vf gr, firm, sbmd, mod srt, mod por, calc SS.

SH: m gy, firm-hd, sbbly, pty, n calc, w/ lt bm, firm, m gr, sbmd, mod srt, p por, v calc, tr carb mat incl, SS.

SH: m gy, firm-hd, sbbly, pty, n calc, w/ lt bm, firm, m gr, sbmd, mod srt, p por, v calc, tr carb mat incl, SS.

SS: lt bm, firm, m gr, sbmd, mod srt, p por, v calc, tr carb mat incl.

SS: lt bm, firm, m gr, sbmd, mod srt, p por, v calc, tr carb mat incl.

SS: lt gy, wh ip, firm, f-m gr, sbmd, mod srt, p por, mtx calc, tr carb mat incl.

SH: m gy, firm-hd, sbbly, pty, n calc, w/ lt gy, wh ip, firm, f-m gr, sbmd, mod srt, p por, mtx calc, tr carb mat incl, SS

06:00 @ 2687'
93ft/hr

SCALE CHANGE

ROP Scale 0 - 2 (min/ft)

ROP (min/ft)

07:00 @ 2804'
117 ft/hr

CG

CG

CG

CG

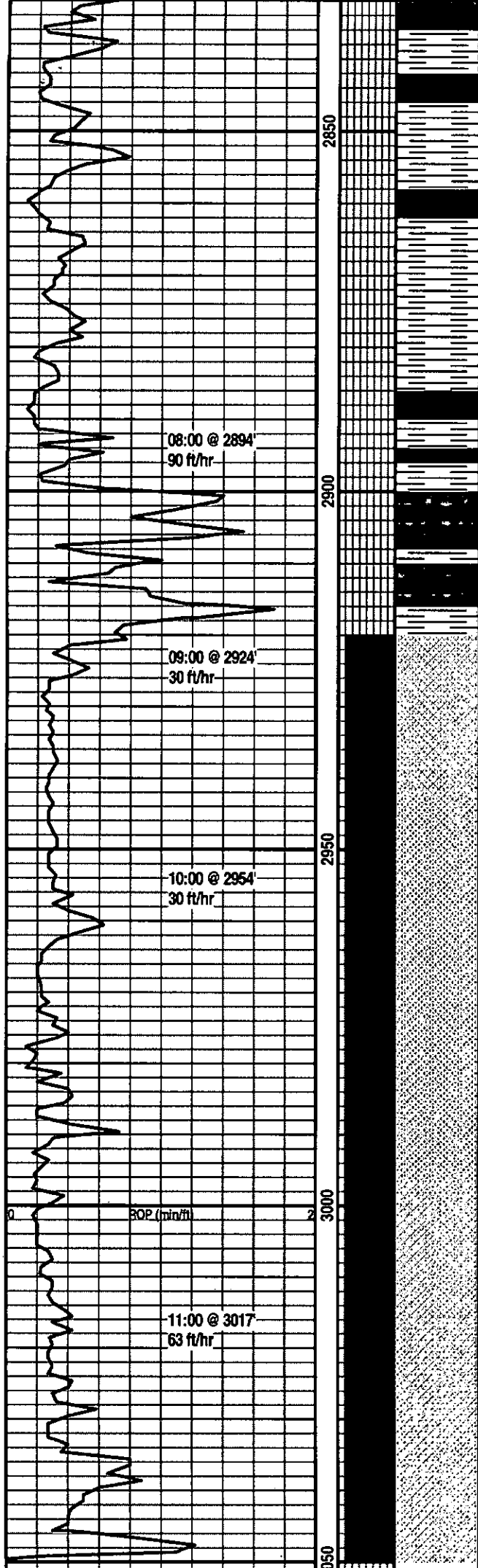
CG

CG

CG

TG

CG



COAL: blk, v hd, blk, irreg frac, waxy, w/ m gy, firm-hd, sbblky, pty, n calc, SH.

COAL: blk, v hd, blk, irreg frac, waxy.

SH: m gy, firm-hd, sbblky, pty, n calc.

COAL: blk, v hd, blk, irreg frac, waxy, w/ m gy, firm-hd, sbblky, pty, n calc, SH.

Possible Top Trinidad @ 2920'

Lost Return @ 2924'

SS: milky wh, clr, f-vf gr, sbang-sbrmd, unconso, calc, w srt, g por.

Due to drilling conditions no sample recovery.

Due to drilling conditions no sample recovery.

SCALE CHANGE

TG Scale 0 - 1000 units

TG

1000

CG

CG

CG

CG

CG

CG

TG

1000

TD @ 3050' 12:15 hrs

08/06/08

Magnum 43 26