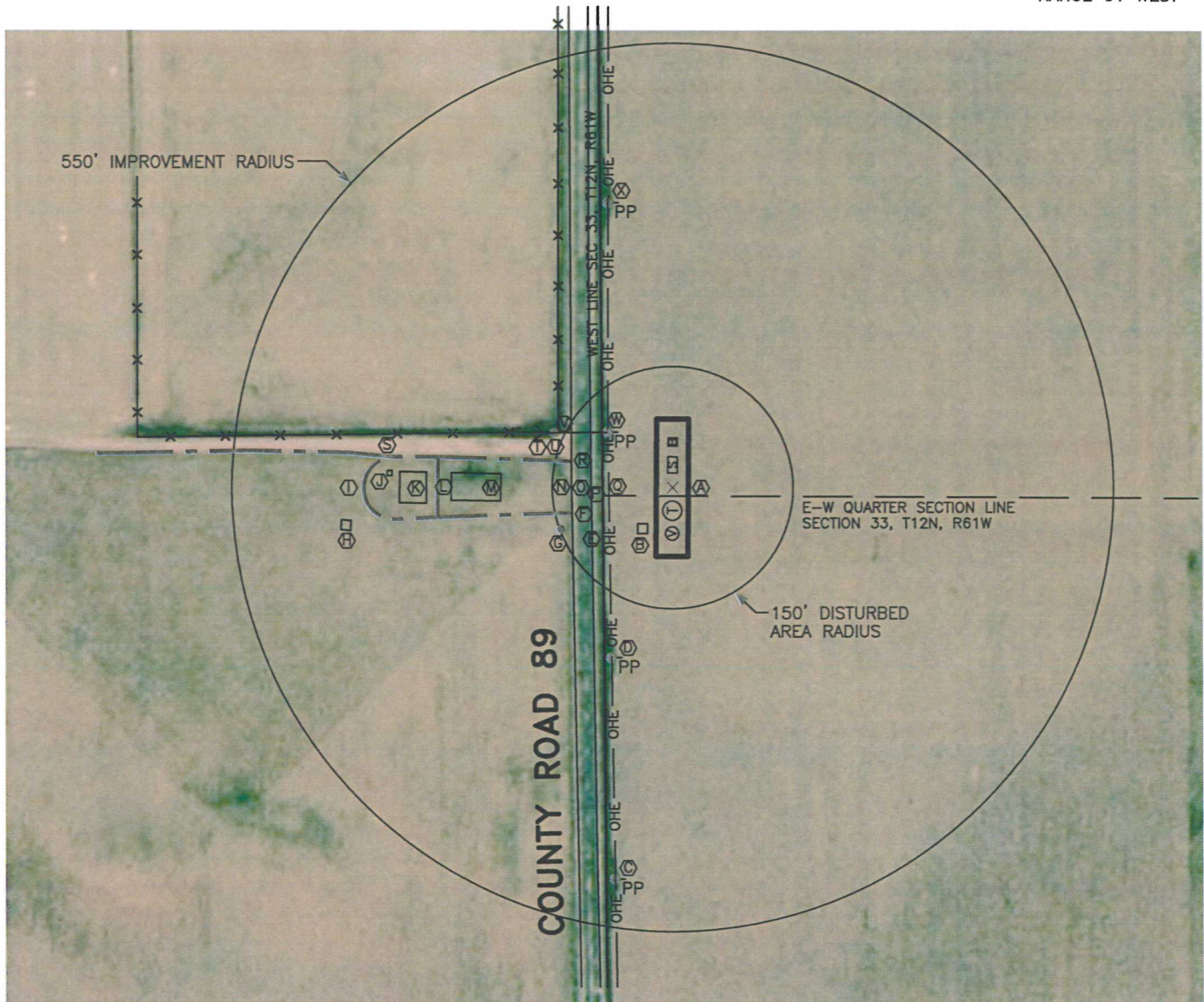


# PRODUCTION FACILITY LOCATION DRAWING

THIS MAP DOES NOT REPRESENT A BOUNDARY SURVEY

LOYD PC GD33-13

SECTION 33  
TOWNSHIP 12 NORTH  
RANGE 61 WEST



REFERENCE POINT LOCATION:  
LATITUDE: 40.96575N  
LONGITUDE: 104.21977W  
ELEV: 5256'  
PDOP: 1.7  
DATE: 8/18/10  
OPERATOR: DARREN VEAL  
SW1/4NW1/4  
FNL: 2647'  
FWL: 88'  
DISTANCE TO WELL: ~2097' SE  
ASSOCIATED NEW WELLS:  
LOYD PC GD33-13  
ASSOCIATED EXISTING WELLS:  
NONE

## LEGEND:

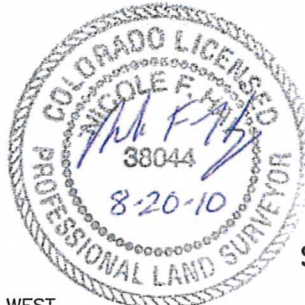
- × REFERENCE POINT
- ① PROPOSED TANK
- ⊙ PROPOSED WATER VAULT
- ▣ PROPOSED SEPARATOR
- PROPOSED BURNER

ALL DISTANCES ARE APPROXIMATE

## IMPROVEMENTS:

- |   |                                 |   |                          |
|---|---------------------------------|---|--------------------------|
| Ⓐ | E-W QUARTER SEC LINE 10' SOUTH  | Ⓔ | CL 8' DIRT TRAIL 350' NW |
| Ⓑ | VALVE AREA 55' SW               | Ⓣ | DOWN GUY 178' NW         |
| Ⓒ | POWER POLE 490' SW              | Ⓤ | BRACE POLE 163' NW       |
| Ⓓ | POWER POLE 224' SW              | Ⓥ | FENCE CORNER 159' NW     |
| Ⓔ | GAS MARKER 98' SW               | Ⓦ | POWER POLE 106' NW       |
| Ⓕ | CL 20' GRAVEL ROAD 129' SW      | Ⓧ | POWER POLE 362' NW       |
| Ⓖ | GAS MARKER 149' SW              |   |                          |
| Ⓗ | VALVE AREA 403' SW              |   |                          |
| Ⓢ | CL 20' GRAVEL ROAD 386' WEST    |   |                          |
| Ⓣ | BURNER 351' NW                  |   |                          |
| Ⓥ | SEPARATOR 307' WEST             |   |                          |
| Ⓦ | CL 20' GRAVEL ROAD 294' WEST    |   |                          |
| Ⓧ | TANK SITE 214' WEST             |   |                          |
| Ⓨ | WEST EDGE OF ASPHALT 126' WEST  |   |                          |
| Ⓩ | EAST EDGE OF ASPHALT 102' WEST  |   |                          |
| ⓐ | PROPERTY LINE 88' WEST          |   |                          |
| ⓑ | OVERHEAD ELECTRIC LINE 80' WEST |   |                          |
| Ⓒ | CL 20' GRAVEL ROAD 130' NW      |   |                          |

THE NEAREST PUBLIC ROAD IS APPROXIMATELY 102' WEST  
THE NEAREST PROPERTY LINE IS APPROXIMATELY 88' WEST  
THE NEAREST BUILDING IS APPROXIMATELY 1398' NW  
THE NEAREST RAILROAD TRACKS ARE 5280+  
THE NEAREST OVERHEAD UTILITY LINE IS APPROXIMATELY 80' WEST



SCALE: 1"=200'  
0 100 200  
SCALE IN FEET