

LOCATION DRAWING

VEGETATION:
CRP

SURFACE USE:
NON CROP LAND

GROUND SLOPE <10%

ORLANDO HILL 26-44-8-61

LATITUDE: 40.627640

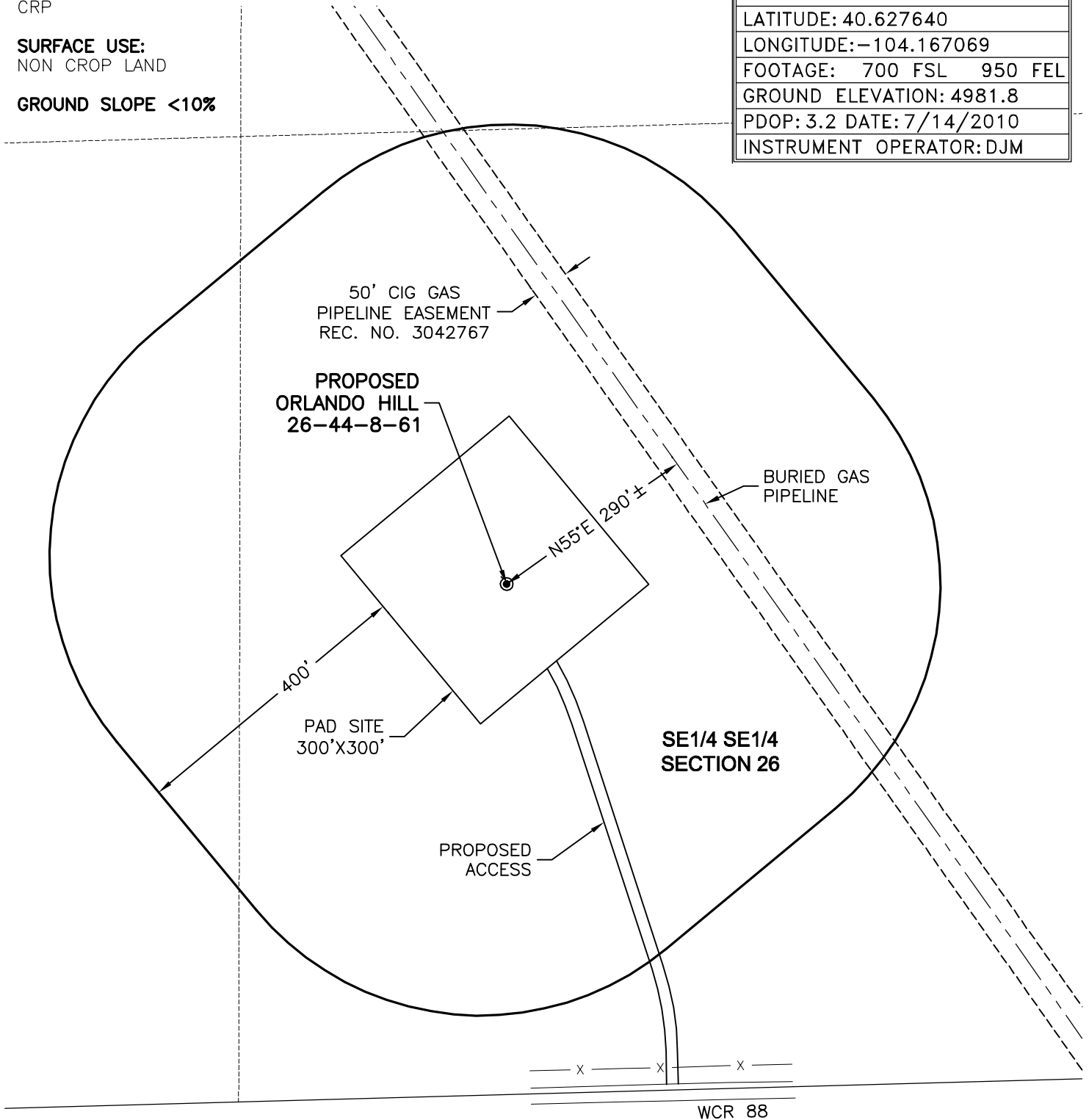
LONGITUDE: -104.167069

FOOTAGE: 700 FSL 950 FEL

GROUND ELEVATION: 4981.8

PDOP: 3.2 DATE: 7/14/2010

INSTRUMENT OPERATOR: DJM



North

0 200 400

Graphic Scale in Feet
1 Inch = 200 feet

DISTURBANCE ACREAGE:
3.5± DRILLING OPERATIONS
1.5± INTERIM RECLAIM

7/14/10



LAND SURVEYING AND MAPPING
LAFAYETTE - WINTER PARK
Ph 303 666 0379 Fx 303 665 6320

CARRIZO OIL & GAS, INC
ORLANDO HILL 26-44-8-61

SE1/4 SE1/4 SEC. 26 T8N R61W
6th PM WELD COUNTY COLORADO