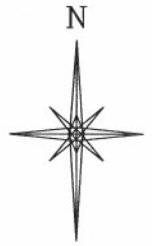
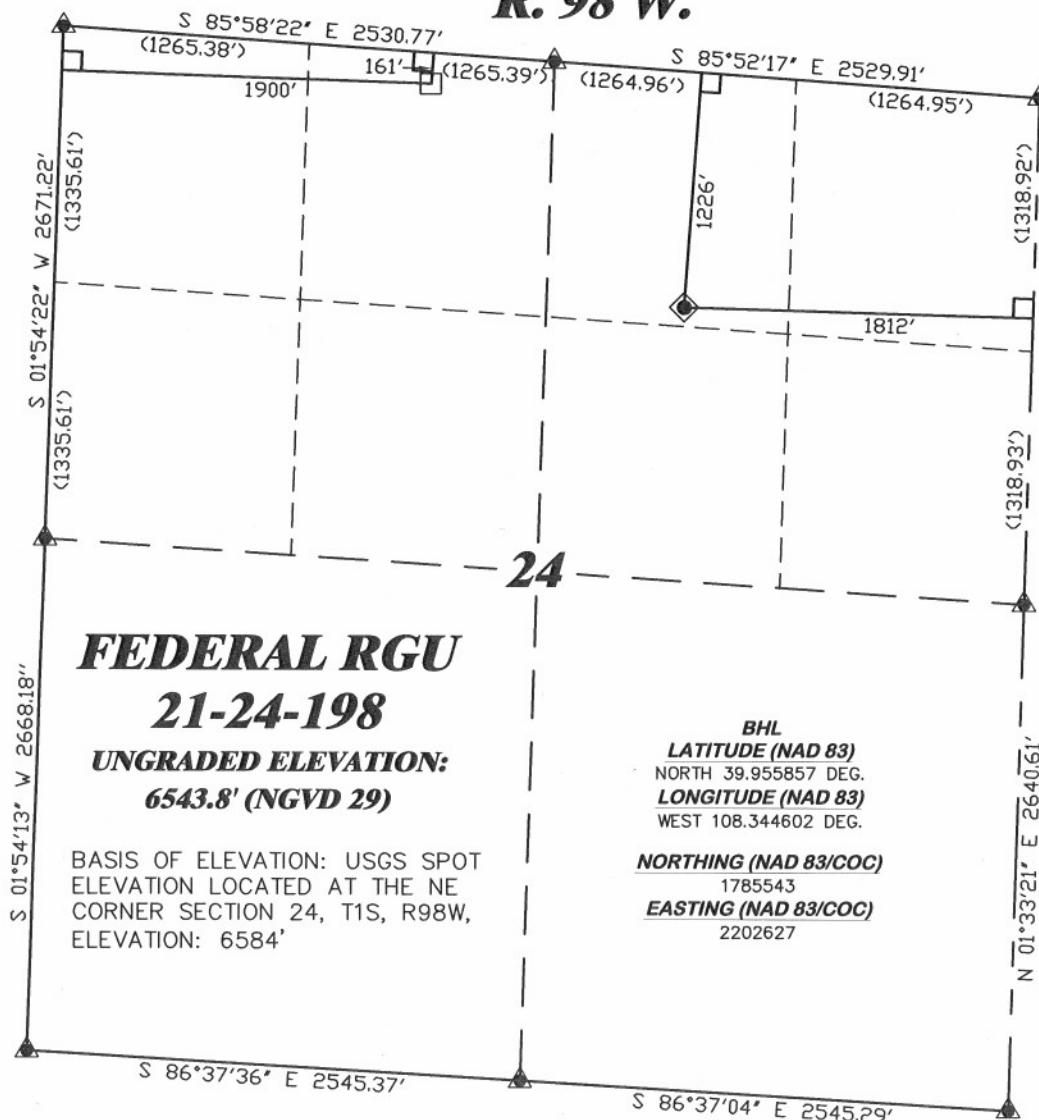


**R. 98 W.**



SCALE 1" = 1000'

**T. 1 S.**



**LATITUDE (NAD 83)**

NORTH 39.952786 DEG.

**LONGITUDE (NAD 83)**

WEST 108.339784 DEG.

**NORTHING (NAD 83/COC)**

1784382.36

**EASTING (NAD 83/COC)**

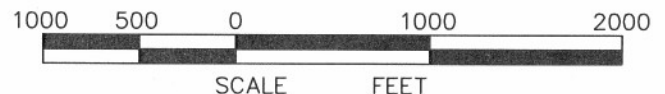
2203942.61

**BASIS OF BEARING/DATUM**  
SPCS CO NORTH NAD 27  
BASED ON NGS TRIANGULATION  
STATION "BINER"

**NOTES**

NON CROP, RANGELAND  
EXISTING WELL FEATURES WITHIN  
400' RADIUS OF WELL SITE.

GPS OPERATOR JOHN RICHARDSON  
OBSERVED A PDOP OF 1.7.  
ALL GPS OBSERVATIONS ARE IN  
COMPLIANCE WITH COGCC RULE No.215.



**SURVEYOR'S STATEMENT**

I, CLEMENT R. WILLIAMS, OF ROCK SPRINGS, WYOMING, HEREBY STATE: THIS MAP WAS MADE FROM NOTES TAKEN DURING AN ACTUAL FIELD SURVEY DONE UNDER MY DIRECT SUPERVISION ON JANUARY 26, 2010 AND THAT THIS PLAT CORRECTLY SHOWS THE LOCATION OF FEDERAL RGU 21-24-198 AS STAKED ON THE GROUND. FIELD SURVEY DATUM IS NAD 27 COLORADO NORTH STATE PLANE. VALUES HAVE BEEN COVERED TO NAD 83 COLORADO CENTRAL STATE PLANE FOR THE PURPOSES OF THIS PLAT.

**LEGEND**

- ◆ WELL LOCATION
- BOTTOM HOLE LOC. (APPROX)
- FOUND MONUMENT
- ▲ PREVIOUSLY FOUND MONUMENT
- L DENOTES 90° TIE



FEDERAL RGU 31-24-198 PAD

**DRG** RIFFIN & ASSOCIATES, INC.  
(307) 362-5028 1414 ELK ST., ROCK SPRINGS, WY 82901

**PLAT OF DRILLING LOCATION  
FOR  
WILLIAMS PRODUCTION RMT COMPANY**  
**1226' F/NL & 1812' F/EL, SECTION 24,  
T. 1 S., R. 98 W., 6th P.M.  
RIO BLANCO COUNTY, COLORADO**

DRAWN: 3/4/10 - MMM

SCALE: 1" = 1000'

REVISED: 3/24/10 - MMM

DRG JOB No. 17084

REVISED DATUM

EXHIBIT 1