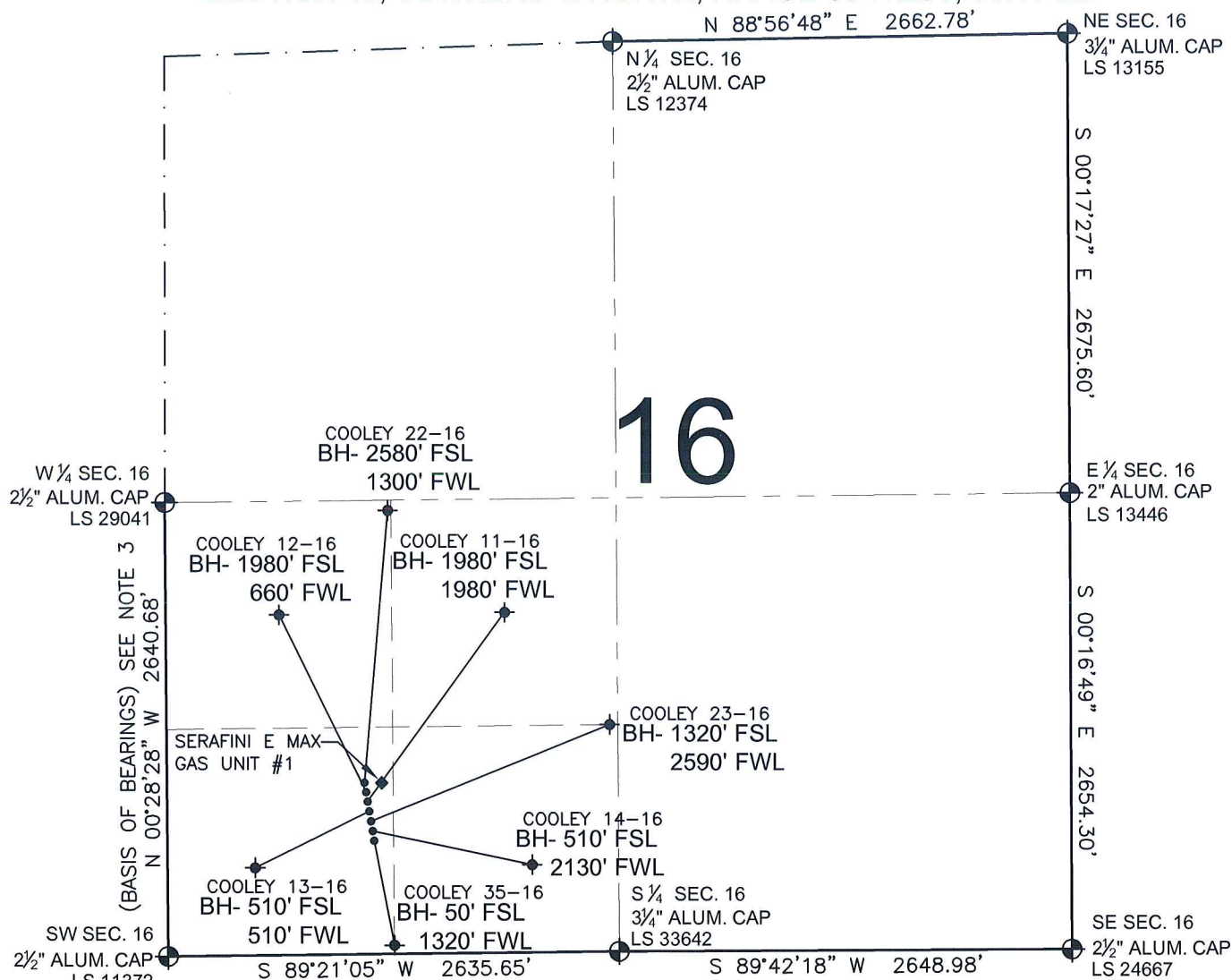


PAD DRAWING - COOLEY 7 PAD

SECTION 16, TOWNSHIP 2 NORTH, RANGE 68 WEST, 6TH P.M.



LEGEND

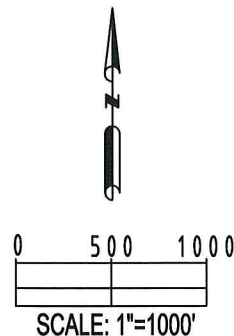
- (Circle with cross) = EXISTING MONUMENT (Diamond with cross) = BOTTOM HOLE BH= BOTTOM HOLE
 (Solid circle) = PROPOSED WELL (Diamond) = EXISTING WELL

NOTES:

COOLEY 35-16 TO BE AT 939' FSL, 1161' FWL.
 BOTTOM HOLE AT 50' FSL & 1320' FWL.
 COOLEY 14-16 TO BE AT 949' FSL, 1159' FWL.
 BOTTOM HOLE AT 510' FSL & 2130' FWL.
 COOLEY 23-16 TO BE AT 958' FSL, 1157' FWL.
 BOTTOM HOLE AT 1320' FSL & 2590' FWL.
 COOLEY 13-16 TO BE AT 968' FSL, 1156' FWL.
 BOTTOM HOLE AT 510' FSL & 510' FWL.
 COOLEY 11-16 TO BE AT 978' FSL, 1154' FWL.
 BOTTOM HOLE AT 1980' FSL & 1980' FWL.
 COOLEY 12-16 TO BE AT 988' FSL, 1153' FWL.
 BOTTOM HOLE AT 1980' FSL & 660' FWL.
 COOLEY 22-16 TO BE AT 998' FSL, 1151' FWL.
 BOTTOM HOLE AT 2580' FSL & 1300' FWL.
 SERAFINI E MAX GAS UNIT #1 IS 998' FSL, 2101' FWL.

NOTES:

- THIS SURVEY WAS DONE BY GPS METHODS AND CONFORMS TO THE MINIMUM STANDARDS SET BY THE C.O.G.C.C., RULE NO. 215
- ELEVATIONS SHOWN AT THE WELL HEAD, AS WELL AS HORIZONTAL CONTROL, ARE BASED ON GPS-RTK VALUES DERIVED FROM DOING 2-HOUR STATIC GPS SESSIONS AND REDUCTIONS USING O.P.U.S. SOLUTIONS.
VERTICAL = NAVD88; HORIZONTAL = NAD83/92
- THE BEARINGS SHOWN HEREON ARE BASED ON GPS OBSERVATIONS BETWEEN THE MONUMENTS SHOWN HEREON AS FOUND ON THE FIELD DATE BELOW.
- DISTANCES SHOWN ARE AT GROUND LEVEL, AS MEASURED IN THE FIELD, WITH TIES TO WELLS MEASURED AT A PERPENDICULAR TO SECTION LINES.



REVISIONS

INITIAL	DATE

PREPARED BY:

PFS

Petroleum Field Services, LLC
1801 W. 13th Ave.
Denver, CO 80204



KERR-MCGEE OIL & GAS ONSHORE LP

FIELD DATE:
04-20-10

DRAWING DATE:
04-21-10

BY:
SMF

PAD NAME:
COOLEY 7 PAD

SURFACE LOCATION:

WELD COUNTY, COLORADO
SW 1/4 SW 1/4, SEC. 16, T2N, R68W