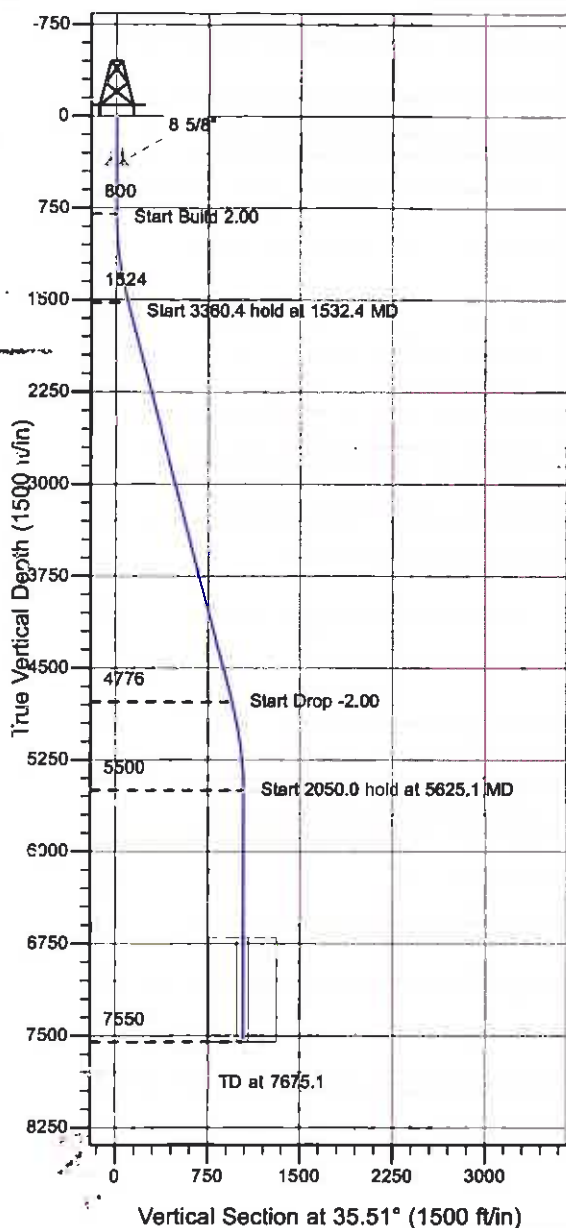


ENSIGN

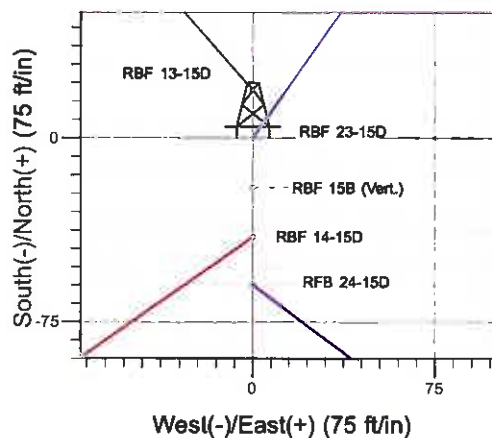
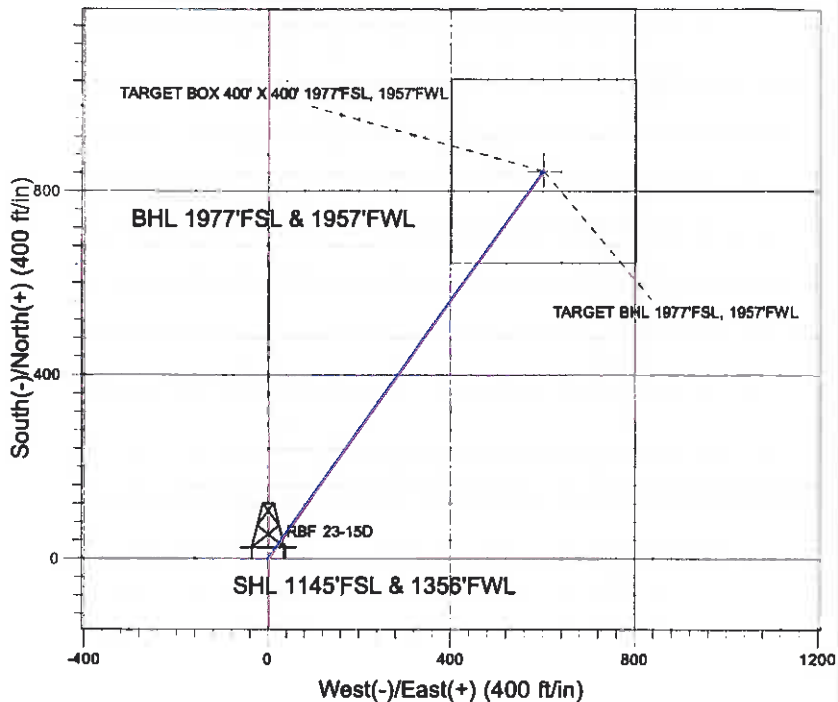
Directional

Well Name: RBF 23-15D

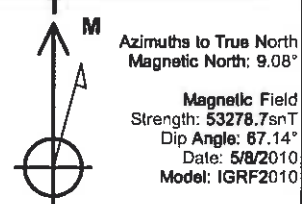
Surface Location: RBF 24-15D Pad Sec.15-T6N-R67W
 North American Datum 1983 , US State Plane 1983 , Colorado Northern Zone
 Ground Elevation: 4781.0
 +N/-S+E/-W Northing Easting Latitude Longitude Slot
 0.0 0.01419315.31 3171308.65 40° 28' 58.040 N 104° 53' 2.954 W
 Original Well Elev WELL @ 4794.0ft (Original Well Elev)



Synergy Resources



RBF 24-15D Pad Sec.15-T6N-R67W
 RBF 23-15D
 Plan #1 (5-8-10)
 18:05, May 12 2010



WELLBORE TARGET DETAILS (LAT/LONG)

Name	TVD	+N/-S	+E/-W	Latitude	Longitude	Shape
TARGET BHL 1977'FSL, 1957'FWL	5500.0	843.3	601.7	40° 29' 6.374 N	104° 52' 55.168 W	Point
TARGET BOX 400' X 400' 1977'FSL, 1957'FWL	6700.0	843.3	601.7	40° 29' 6.373 N	104° 52' 55.167 W	Rectangle (Sides: L400.0 W400.0)

SECTION DETAILS

Sec	MD	Inc	Azi	TVD	+N/-S	+E/-W	DLeg	TFace	VSec	Target
1	0.0	0.00	0.00	0.0	0.0	0.0	0.00	0.00	0.0	
2	800.0	0.00	0.00	800.0	0.0	0.0	0.00	0.00	0.0	
3	1532.4	14.65	35.51	1524.4	75.8	54.1	2.00	35.51	93.1	
4	4892.7	14.65	35.51	4775.6	767.5	547.6	0.00	0.00	942.9	
5	5625.1	0.00	0.00	5500.0	843.3	601.7	2.00	180.00	1036.0	TARGET BHL 1977'FSL, 1957'FWL
6	7675.1	0.00	0.00	7550.0	843.3	601.7	0.00	0.00	1036.0	



Directional

Synergy Resources

SEC.15-T6N-R67W

RBF 24-15D Pad Sec.15-T6N-R67W

RBF 23-15D

Wellbore #1

Plan: Plan #1 (5-8-10)

Standard Planning Report

12 May, 2010

ENSIGN Directional

ENSIGN DIRECTIONAL Planning Report

Database:	EDM den0-adp01 Server Data	Local Co-ordinate Reference:	Well RBF 23-15D
Company:	Synergy Resources	TVD Reference:	WELL @ 4794.0ft (Original Well Elev)
Project:	SEC.15-T6N-R67W	MD Reference:	WELL @ 4794.0ft (Original Well Elev)
Site:	RBF 24-15D Pad Sec.15-T6N-R67W	North Reference:	True
Well:	RBF 23-15D	Survey Calculation Method:	Minimum Curvature
Wellbore:	Wellbore #1		
Design:	Plan #1 (5-8-10)		

Project	SEC.15-T6N-R67W, Weld County, Colorado		
Map System:	US State Plane 1983	System Datum:	Mean Sea Level
Geo Datum:	North American Datum 1983		
Map Zone:	Colorado Northern Zone		Using geodetic scale factor

Site		RBF 24-15D Pad Sec.15-T6N-R67W			
Site Position:		Northing:	1,419,255.21 ft	Latitude:	40° 28' 57.446 N
From:	Lat/Long	Easting:	3,171,309.35 ft	Longitude:	104° 53' 2.951 W
Position Uncertainty:	0.0 ft	Slot Radius:	"	Grid Convergence:	0.40 °

Well	RBF 23-15D					
Well Position	+N/-S	60.1 ft	Northing:	1,419,315.31 ft	Latitude:	40° 28' 58.040 N
	+E/-W	-0.3 ft	Easting:	3,171,308.65 ft	Longitude:	104° 53' 2.954 W
Position Uncertainty	0.0 ft	Wellhead Elevation:	ft	Ground Level:	4,781.0 ft	

Wellbore	Wellbore #1				
Magnetics	Model Name	Sample Date	Declination (")	Dip Angle (")	Field Strength (nT)
	IGRF2010	5/8/2010	9.09	67.14	53,279

Design	Plan #1 (5-8-10)			
Audit Notes:				
Version:	Phase:	PROTOTYPE	Tie On Depth:	0.0
Vertical Section:	Depth From (TVD) (ft)	+N/-S (ft)	+E/-W (ft)	Direction (")
	0.0	0.0	0.0	35.51

Plan Sections										
Measured Depth (ft)	Inclination (°)	Azimuth (°)	Vertical Depth (ft)	+N/-S (ft)	+E/-W (ft)	Dogleg Rate ("/100ft)	Build Rate ("/100ft)	Turn Rate ("/100ft)	TFO (")	Target
0.0	0.00	0.00	0.0	0.0	0.0	0.00	0.00	0.00	0.00	
800.0	0.00	0.00	800.0	0.0	0.0	0.00	0.00	0.00	0.00	
1,532.4	14.65	35.51	1,524.4	75.8	54.1	2.00	2.00	0.00	35.51	
4,892.7	14.65	35.51	4,775.8	767.5	547.6	0.00	0.00	0.00	0.00	
5,625.1	0.00	0.00	5,500.0	843.3	601.7	2.00	-2.00	0.00	180.00	TARGET BHL 1977
7,675.1	0.00	0.00	7,550.0	843.3	601.7	0.00	0.00	0.00	0.00	

Database: EDM den0-adp01 Server Data
 Company: Synergy Resources
 Project: SEC.15-T6N-R67W
 Site: RBF 24-15D Pad Sec.15-T6N-R67W
 Well: RBF 23-15D
 Wellbore: Wellbore #1
 Design: Plan #1 (5-8-10)

Local Co-ordinate Reference: Well RBF 23-15D
 TVD Reference: WELL @ 4794.0ft (Original Well Elev)
 MD Reference: WELL @ 4794.0ft (Original Well Elev)
 North Reference: True
 Survey Calculation Method: Minimum Curvature

Planned Survey

Measured Depth (ft)	Inclination (°)	Azimuth (°)	Vertical Depth (ft)	+N/-S (ft)	+E/-W (ft)	Vertical Section (ft)	Dogleg Rate (°/100ft)	Build Rate (°/100ft)	Turn Rate (°/100ft)
0.0	0.00	0.00	0.0	0.0	0.0	0.0	0.00	0.00	0.00
40.0	0.00	0.00	40.0	0.0	0.0	0.0	0.00	0.00	0.00
80.0	0.00	0.00	80.0	0.0	0.0	0.0	0.00	0.00	0.00
120.0	0.00	0.00	120.0	0.0	0.0	0.0	0.00	0.00	0.00
160.0	0.00	0.00	160.0	0.0	0.0	0.0	0.00	0.00	0.00
200.0	0.00	0.00	200.0	0.0	0.0	0.0	0.00	0.00	0.00
240.0	0.00	0.00	240.0	0.0	0.0	0.0	0.00	0.00	0.00
280.0	0.00	0.00	280.0	0.0	0.0	0.0	0.00	0.00	0.00
320.0	0.00	0.00	320.0	0.0	0.0	0.0	0.00	0.00	0.00
360.0	0.00	0.00	360.0	0.0	0.0	0.0	0.00	0.00	0.00
400.0	0.00	0.00	400.0	0.0	0.0	0.0	0.00	0.00	0.00
8 5/8"									
440.0	0.00	0.00	440.0	0.0	0.0	0.0	0.00	0.00	0.00
480.0	0.00	0.00	480.0	0.0	0.0	0.0	0.00	0.00	0.00
520.0	0.00	0.00	520.0	0.0	0.0	0.0	0.00	0.00	0.00
560.0	0.00	0.00	560.0	0.0	0.0	0.0	0.00	0.00	0.00
600.0	0.00	0.00	600.0	0.0	0.0	0.0	0.00	0.00	0.00
640.0	0.00	0.00	640.0	0.0	0.0	0.0	0.00	0.00	0.00
680.0	0.00	0.00	680.0	0.0	0.0	0.0	0.00	0.00	0.00
720.0	0.00	0.00	720.0	0.0	0.0	0.0	0.00	0.00	0.00
760.0	0.00	0.00	760.0	0.0	0.0	0.0	0.00	0.00	0.00
800.0	0.00	0.00	800.0	0.0	0.0	0.0	0.00	0.00	0.00
840.0	0.80	35.51	840.0	0.2	0.2	0.3	2.00	2.00	0.00
880.0	1.60	35.51	880.0	0.9	0.6	1.1	2.00	2.00	0.00
920.0	2.40	35.51	920.0	2.0	1.5	2.5	2.00	2.00	0.00
960.0	3.20	35.51	959.9	3.6	2.6	4.5	2.00	2.00	0.00
1,000.0	4.00	35.51	999.8	5.7	4.1	7.0	2.00	2.00	0.00
1,040.0	4.80	35.51	1,039.7	8.2	5.8	10.0	2.00	2.00	0.00
1,080.0	5.60	35.51	1,079.6	11.1	7.9	13.7	2.00	2.00	0.00
1,120.0	6.40	35.51	1,119.3	14.5	10.4	17.9	2.00	2.00	0.00
1,160.0	7.20	35.51	1,159.1	18.4	13.1	22.6	2.00	2.00	0.00
1,200.0	8.00	35.51	1,198.7	22.7	16.2	27.9	2.00	2.00	0.00
1,240.0	8.80	35.51	1,238.3	27.5	19.6	33.7	2.00	2.00	0.00
1,280.0	9.60	35.51	1,277.8	32.7	23.3	40.1	2.00	2.00	0.00
1,320.0	10.40	35.51	1,317.1	38.3	27.3	47.1	2.00	2.00	0.00
1,360.0	11.20	35.51	1,356.4	44.4	31.7	54.6	2.00	2.00	0.00
1,400.0	12.00	35.51	1,395.6	51.0	36.4	62.6	2.00	2.00	0.00
1,440.0	12.80	35.51	1,434.7	58.0	41.3	71.2	2.00	2.00	0.00
1,480.0	13.60	35.51	1,473.6	65.4	46.7	80.3	2.00	2.00	0.00
1,520.0	14.40	35.51	1,512.4	73.3	52.3	90.0	2.00	2.00	0.00
1,532.4	14.65	35.51	1,524.4	75.8	54.1	93.1	2.00	2.00	0.00
1,560.0	14.65	35.51	1,551.2	81.5	58.1	100.1	0.00	0.00	0.00
1,600.0	14.65	35.51	1,589.9	89.7	64.0	110.2	0.00	0.00	0.00
1,640.0	14.65	35.51	1,628.6	97.9	69.9	120.3	0.00	0.00	0.00
1,680.0	14.65	35.51	1,667.3	106.2	75.8	130.4	0.00	0.00	0.00
1,720.0	14.65	35.51	1,706.0	114.4	81.6	140.6	0.00	0.00	0.00
1,760.0	14.65	35.51	1,744.7	122.7	87.5	150.7	0.00	0.00	0.00
1,800.0	14.65	35.51	1,783.4	130.9	93.4	160.8	0.00	0.00	0.00
1,840.0	14.65	35.51	1,822.1	139.1	99.3	170.9	0.00	0.00	0.00
1,880.0	14.65	35.51	1,860.8	147.4	105.1	181.0	0.00	0.00	0.00
1,920.0	14.65	35.51	1,899.5	155.6	111.0	191.1	0.00	0.00	0.00
1,960.0	14.65	35.51	1,938.2	163.8	116.9	201.2	0.00	0.00	0.00
2,000.0	14.65	35.51	1,976.9	172.1	122.8	211.4	0.00	0.00	0.00
2,040.0	14.65	35.51	2,015.6	180.3	128.6	221.5	0.00	0.00	0.00

ENSIGN Directional

ENSIGN DIRECTIONAL Planning Report

Database:	EDM den0-adp01 Server Data	Local Co-ordinate Reference:	Well RBF 23-15D
Company:	Synergy Resources	TVD Reference:	WELL @ 4794.0ft (Original Well Elev)
Project:	SEC.15-T6N-R67W	MD Reference:	WELL @ 4794.0ft (Original Well Elev)
Site:	RBF 24-15D Pad Sec.15-T6N-R67W	North Reference:	True
Well:	RBF 23-15D	Survey Calculation Method:	Minimum Curvature
Wellbore:	Wellbore #1		
Design:	Plan #1 (5-8-10)		

Planned Survey										
Measured Depth (ft)	Inclination (°)	Azimuth (°)	Vertical Depth (ft)	+N/-S (ft)	+E/-W (ft)	Vertical Section (ft)	Dogleg Rate (°/100ft)	Build Rate (°/100ft)	Turn Rate (°/100ft)	
2,080.0	14.65	35.51	2,054.3	188.5	134.5	231.6	0.00	0.00	0.00	
2,120.0	14.65	35.51	2,093.0	196.8	140.4	241.7	0.00	0.00	0.00	
2,160.0	14.65	35.51	2,131.7	205.0	146.3	251.8	0.00	0.00	0.00	
2,200.0	14.65	35.51	2,170.4	213.2	152.1	261.9	0.00	0.00	0.00	
2,240.0	14.65	35.51	2,209.1	221.5	158.0	272.0	0.00	0.00	0.00	
2,280.0	14.65	35.51	2,247.8	229.7	163.9	282.2	0.00	0.00	0.00	
2,320.0	14.65	35.51	2,286.5	237.9	169.7	292.3	0.00	0.00	0.00	
2,360.0	14.65	35.51	2,325.2	246.2	175.6	302.4	0.00	0.00	0.00	
2,400.0	14.65	35.51	2,363.9	254.4	181.5	312.5	0.00	0.00	0.00	
2,440.0	14.65	35.51	2,402.6	262.6	187.4	322.6	0.00	0.00	0.00	
2,480.0	14.65	35.51	2,441.3	270.9	193.2	332.7	0.00	0.00	0.00	
2,520.0	14.65	35.51	2,480.0	279.1	199.1	342.9	0.00	0.00	0.00	
2,560.0	14.65	35.51	2,518.7	287.3	205.0	353.0	0.00	0.00	0.00	
2,600.0	14.65	35.51	2,557.4	295.6	210.9	363.1	0.00	0.00	0.00	
2,640.0	14.65	35.51	2,596.1	303.8	216.7	373.2	0.00	0.00	0.00	
2,680.0	14.65	35.51	2,634.8	312.0	222.6	383.3	0.00	0.00	0.00	
2,720.0	14.65	35.51	2,673.4	320.3	228.5	393.4	0.00	0.00	0.00	
2,760.0	14.65	35.51	2,712.1	328.5	234.4	403.5	0.00	0.00	0.00	
2,800.0	14.65	35.51	2,750.8	336.7	240.2	413.7	0.00	0.00	0.00	
2,840.0	14.65	35.51	2,789.5	345.0	246.1	423.8	0.00	0.00	0.00	
2,880.0	14.65	35.51	2,828.2	353.2	252.0	433.9	0.00	0.00	0.00	
2,920.0	14.65	35.51	2,866.9	361.4	257.9	444.0	0.00	0.00	0.00	
2,960.0	14.65	35.51	2,905.6	369.7	263.7	454.1	0.00	0.00	0.00	
3,000.0	14.65	35.51	2,944.3	377.9	269.6	464.2	0.00	0.00	0.00	
3,040.0	14.65	35.51	2,983.0	386.1	275.5	474.3	0.00	0.00	0.00	
3,080.0	14.65	35.51	3,021.7	394.4	281.4	484.5	0.00	0.00	0.00	
3,120.0	14.65	35.51	3,060.4	402.6	287.2	494.6	0.00	0.00	0.00	
3,160.0	14.65	35.51	3,099.1	410.8	293.1	504.7	0.00	0.00	0.00	
3,200.0	14.65	35.51	3,137.8	419.1	299.0	514.8	0.00	0.00	0.00	
3,240.0	14.65	35.51	3,176.5	427.3	304.9	524.9	0.00	0.00	0.00	
3,280.0	14.65	35.51	3,215.2	435.5	310.7	535.0	0.00	0.00	0.00	
3,320.0	14.65	35.51	3,253.9	443.8	316.6	545.1	0.00	0.00	0.00	
3,360.0	14.65	35.51	3,292.6	452.0	322.5	555.3	0.00	0.00	0.00	
3,400.0	14.65	35.51	3,331.3	460.3	328.4	565.4	0.00	0.00	0.00	
3,440.0	14.65	35.51	3,370.0	468.5	334.2	575.5	0.00	0.00	0.00	
3,480.0	14.65	35.51	3,408.7	476.7	340.1	585.6	0.00	0.00	0.00	
3,520.0	14.65	35.51	3,447.4	485.0	346.0	595.7	0.00	0.00	0.00	
3,560.0	14.65	35.51	3,486.1	493.2	351.9	605.8	0.00	0.00	0.00	
3,600.0	14.65	35.51	3,524.8	501.4	357.7	616.0	0.00	0.00	0.00	
3,640.0	14.65	35.51	3,563.5	509.7	363.6	626.1	0.00	0.00	0.00	
3,680.0	14.65	35.51	3,602.2	517.9	369.5	636.2	0.00	0.00	0.00	
3,720.0	14.65	35.51	3,640.9	526.1	375.4	646.3	0.00	0.00	0.00	
3,760.0	14.65	35.51	3,679.6	534.4	381.2	656.4	0.00	0.00	0.00	
3,800.0	14.65	35.51	3,718.3	542.6	387.1	666.5	0.00	0.00	0.00	
3,840.0	14.65	35.51	3,757.0	550.8	393.0	676.6	0.00	0.00	0.00	
3,880.0	14.65	35.51	3,795.7	559.1	398.9	686.8	0.00	0.00	0.00	
3,920.0	14.65	35.51	3,834.4	567.3	404.7	696.9	0.00	0.00	0.00	
3,960.0	14.65	35.51	3,873.1	575.5	410.6	707.0	0.00	0.00	0.00	
4,000.0	14.65	35.51	3,911.8	583.8	416.5	717.1	0.00	0.00	0.00	
4,040.0	14.65	35.51	3,950.5	592.0	422.4	727.2	0.00	0.00	0.00	
4,080.0	14.65	35.51	3,989.2	600.2	428.2	737.3	0.00	0.00	0.00	
4,120.0	14.65	35.51	4,027.9	608.5	434.1	747.4	0.00	0.00	0.00	
4,160.0	14.65	35.51	4,066.6	616.7	440.0	757.6	0.00	0.00	0.00	
4,200.0	14.65	35.51	4,105.3	624.9	445.9	767.7	0.00	0.00	0.00	

ENSIGN Directional

ENSIGN DIRECTIONAL Planning Report

Database:	EDM den0-adp01 Server Data	Local Co-ordinate Reference:	Well RBF 23-15D
Company:	Synergy Resources	TVD Reference:	WELL @ 4794.0ft (Original Well Elev)
Project:	SEC.15-T6N-R67W	MD Reference:	WELL @ 4794.0ft (Original Well Elev)
Site:	RBF 24-15D Pad Sec.15-T6N-R67W	North Reference:	True
Well:	RBF 23-15D	Survey Calculation Method:	Minimum Curvature
Wellbore:	Wellbore #1		
Design:	Plan #1 (5-8-10)		

Planned Survey

Measured Depth (ft)	Inclination (°)	Azimuth (°)	Vertical Depth (ft)	+N/-S (ft)	+E/-W (ft)	Vertical Section (ft)	Dogleg Rate (°/100ft)	Build Rate (°/100ft)	Turn Rate (°/100ft)
4,240.0	14.65	35.51	4,144.0	633.2	451.7	777.8	0.00	0.00	0.00
4,280.0	14.65	35.51	4,182.7	641.4	457.6	787.9	0.00	0.00	0.00
4,320.0	14.65	35.51	4,221.4	649.6	463.5	798.0	0.00	0.00	0.00
4,360.0	14.65	35.51	4,260.1	657.9	469.4	808.1	0.00	0.00	0.00
4,400.0	14.65	35.51	4,298.8	666.1	475.2	818.3	0.00	0.00	0.00
4,440.0	14.65	35.51	4,337.5	674.3	481.1	828.4	0.00	0.00	0.00
4,480.0	14.65	35.51	4,376.2	682.6	487.0	838.5	0.00	0.00	0.00
4,520.0	14.65	35.51	4,414.9	690.8	492.9	848.6	0.00	0.00	0.00
4,560.0	14.65	35.51	4,453.6	699.0	498.7	858.7	0.00	0.00	0.00
4,600.0	14.65	35.51	4,492.3	707.3	504.6	868.8	0.00	0.00	0.00
4,640.0	14.65	35.51	4,531.0	715.5	510.5	878.9	0.00	0.00	0.00
4,680.0	14.65	35.51	4,569.7	723.7	516.4	889.1	0.00	0.00	0.00
4,720.0	14.65	35.51	4,608.4	732.0	522.2	899.2	0.00	0.00	0.00
4,760.0	14.65	35.51	4,647.1	740.2	528.1	909.3	0.00	0.00	0.00
4,800.0	14.65	35.51	4,685.8	748.4	534.0	919.4	0.00	0.00	0.00
4,840.0	14.65	35.51	4,724.5	756.7	539.8	929.5	0.00	0.00	0.00
4,880.0	14.65	35.51	4,763.2	764.9	545.7	939.6	0.00	0.00	0.00
4,892.7	14.65	35.51	4,775.6	767.5	547.6	942.9	0.00	0.00	0.00
4,920.0	14.10	35.51	4,802.0	773.0	551.5	949.6	2.00	-2.00	0.00
4,960.0	13.30	35.51	4,840.8	780.8	557.0	959.1	2.00	-2.00	0.00
5,000.0	12.50	35.51	4,879.8	788.0	562.2	968.0	2.00	-2.00	0.00
5,040.0	11.70	35.51	4,918.9	794.9	567.1	976.4	2.00	-2.00	0.00
5,080.0	10.90	35.51	4,958.2	801.2	571.6	984.3	2.00	-2.00	0.00
5,120.0	10.10	35.51	4,997.5	807.2	575.9	991.5	2.00	-2.00	0.00
5,160.0	9.30	35.51	5,036.9	812.7	579.8	998.3	2.00	-2.00	0.00
5,200.0	8.50	35.51	5,076.4	817.7	583.4	1,004.5	2.00	-2.00	0.00
5,240.0	7.70	35.51	5,116.0	822.3	586.7	1,010.1	2.00	-2.00	0.00
5,280.0	6.90	35.51	5,155.7	826.4	589.6	1,015.2	2.00	-2.00	0.00
5,320.0	6.10	35.51	5,195.5	830.1	592.2	1,019.7	2.00	-2.00	0.00
5,360.0	5.30	35.51	5,235.3	833.4	594.6	1,023.7	2.00	-2.00	0.00
5,400.0	4.50	35.51	5,275.1	836.1	596.5	1,027.1	2.00	-2.00	0.00
5,440.0	3.70	35.51	5,315.0	838.5	598.2	1,030.0	2.00	-2.00	0.00
5,480.0	2.90	35.51	5,354.9	840.3	599.5	1,032.3	2.00	-2.00	0.00
5,520.0	2.10	35.51	5,394.9	841.8	600.6	1,034.0	2.00	-2.00	0.00
5,560.0	1.30	35.51	5,434.9	842.7	601.2	1,035.2	2.00	-2.00	0.00
5,600.0	0.50	35.51	5,474.9	843.2	601.6	1,035.8	2.00	-2.00	0.00
5,625.1	0.00	0.00	5,500.0	843.3	601.7	1,036.0	2.00	-2.00	0.00
TARGET BHL 1977'FSL, 1957'FWL									
5,640.0	0.00	0.00	5,514.9	843.3	601.7	1,036.0	0.00	0.00	0.00
5,680.0	0.00	0.00	5,554.9	843.3	601.7	1,036.0	0.00	0.00	0.00
5,720.0	0.00	0.00	5,594.9	843.3	601.7	1,036.0	0.00	0.00	0.00
5,760.0	0.00	0.00	5,634.9	843.3	601.7	1,036.0	0.00	0.00	0.00
5,800.0	0.00	0.00	5,674.9	843.3	601.7	1,036.0	0.00	0.00	0.00
5,840.0	0.00	0.00	5,714.9	843.3	601.7	1,036.0	0.00	0.00	0.00
5,880.0	0.00	0.00	5,754.9	843.3	601.7	1,036.0	0.00	0.00	0.00
5,920.0	0.00	0.00	5,794.9	843.3	601.7	1,036.0	0.00	0.00	0.00
5,960.0	0.00	0.00	5,834.9	843.3	601.7	1,036.0	0.00	0.00	0.00
6,000.0	0.00	0.00	5,874.9	843.3	601.7	1,036.0	0.00	0.00	0.00
6,040.0	0.00	0.00	5,914.9	843.3	601.7	1,036.0	0.00	0.00	0.00
6,080.0	0.00	0.00	5,954.9	843.3	601.7	1,036.0	0.00	0.00	0.00
6,120.0	0.00	0.00	5,994.9	843.3	601.7	1,036.0	0.00	0.00	0.00
6,160.0	0.00	0.00	6,034.9	843.3	601.7	1,036.0	0.00	0.00	0.00
6,200.0	0.00	0.00	6,074.9	843.3	601.7	1,036.0	0.00	0.00	0.00
6,240.0	0.00	0.00	6,114.9	843.3	601.7	1,036.0	0.00	0.00	0.00

ENSIGN Directional

ENSIGN DIRECTIONAL Planning Report

Database:	EDM den0-adp01 Server Data	Local Co-ordinate Reference:	Well RBF 23-15D
Company:	Synergy Resources	TVD Reference:	WELL @ 4794.0ft (Original Well Elev)
Project:	SEC.15-T6N-R67W	MD Reference:	WELL @ 4794.0ft (Original Well Elev)
Site:	RBF 24-15D Pad Sec.15-T6N-R67W	North Reference:	True
Well:	RBF 23-15D	Survey Calculation Method:	Minimum Curvature
Wellbore:	Wellbore #1		
Design:	Plan #1 (5-8-10)		

Planned Survey

Measured Depth (ft)	Inclination (")	Azimuth (")	Vertical Depth (ft)	+N/-S (ft)	+E/-W (ft)	Vertical Section (ft)	Dogleg Rate ("/100ft)	Build Rate ("/100ft)	Turn Rate ("/100ft)
6,280.0	0.00	0.00	6,154.9	843.3	601.7	1,036.0	0.00	0.00	0.00
6,320.0	0.00	0.00	6,194.9	843.3	601.7	1,036.0	0.00	0.00	0.00
6,360.0	0.00	0.00	6,234.9	843.3	601.7	1,036.0	0.00	0.00	0.00
6,400.0	0.00	0.00	6,274.9	843.3	601.7	1,036.0	0.00	0.00	0.00
6,440.0	0.00	0.00	6,314.9	843.3	601.7	1,036.0	0.00	0.00	0.00
6,480.0	0.00	0.00	6,354.9	843.3	601.7	1,036.0	0.00	0.00	0.00
6,520.0	0.00	0.00	6,394.9	843.3	601.7	1,036.0	0.00	0.00	0.00
6,560.0	0.00	0.00	6,434.9	843.3	601.7	1,036.0	0.00	0.00	0.00
6,600.0	0.00	0.00	6,474.9	843.3	601.7	1,036.0	0.00	0.00	0.00
6,640.0	0.00	0.00	6,514.9	843.3	601.7	1,036.0	0.00	0.00	0.00
6,680.0	0.00	0.00	6,554.9	843.3	601.7	1,036.0	0.00	0.00	0.00
6,720.0	0.00	0.00	6,594.9	843.3	601.7	1,036.0	0.00	0.00	0.00
6,760.0	0.00	0.00	6,634.9	843.3	601.7	1,036.0	0.00	0.00	0.00
6,800.0	0.00	0.00	6,674.9	843.3	601.7	1,036.0	0.00	0.00	0.00
6,825.1	0.00	0.00	6,700.0	843.3	601.7	1,036.0	0.00	0.00	0.00
TARGET BOX 400' X 400' 1977'FSL, 1957'FWL									
6,840.0	0.00	0.00	6,714.9	843.3	601.7	1,036.0	0.00	0.00	0.00
6,880.0	0.00	0.00	6,754.9	843.3	601.7	1,036.0	0.00	0.00	0.00
6,920.0	0.00	0.00	6,794.9	843.3	601.7	1,036.0	0.00	0.00	0.00
6,960.0	0.00	0.00	6,834.9	843.3	601.7	1,036.0	0.00	0.00	0.00
7,000.0	0.00	0.00	6,874.9	843.3	601.7	1,036.0	0.00	0.00	0.00
7,040.0	0.00	0.00	6,914.9	843.3	601.7	1,036.0	0.00	0.00	0.00
7,080.0	0.00	0.00	6,954.9	843.3	601.7	1,036.0	0.00	0.00	0.00
7,120.0	0.00	0.00	6,994.9	843.3	601.7	1,036.0	0.00	0.00	0.00
7,160.0	0.00	0.00	7,034.9	843.3	601.7	1,036.0	0.00	0.00	0.00
7,200.0	0.00	0.00	7,074.9	843.3	601.7	1,036.0	0.00	0.00	0.00
7,240.0	0.00	0.00	7,114.9	843.3	601.7	1,036.0	0.00	0.00	0.00
7,280.0	0.00	0.00	7,154.9	843.3	601.7	1,036.0	0.00	0.00	0.00
7,320.0	0.00	0.00	7,194.9	843.3	601.7	1,036.0	0.00	0.00	0.00
7,360.0	0.00	0.00	7,234.9	843.3	601.7	1,036.0	0.00	0.00	0.00
7,400.0	0.00	0.00	7,274.9	843.3	601.7	1,036.0	0.00	0.00	0.00
7,440.0	0.00	0.00	7,314.9	843.3	601.7	1,036.0	0.00	0.00	0.00
7,480.0	0.00	0.00	7,354.9	843.3	601.7	1,036.0	0.00	0.00	0.00
7,520.0	0.00	0.00	7,394.9	843.3	601.7	1,036.0	0.00	0.00	0.00
7,560.0	0.00	0.00	7,434.9	843.3	601.7	1,036.0	0.00	0.00	0.00
7,600.0	0.00	0.00	7,474.9	843.3	601.7	1,036.0	0.00	0.00	0.00
7,640.0	0.00	0.00	7,514.9	843.3	601.7	1,036.0	0.00	0.00	0.00
7,675.1	0.00	0.00	7,550.0	843.3	601.7	1,036.0	0.00	0.00	0.00

Targets

Target Name	Dip Angle (")	Dip Dir. (")	TVD (ft)	+N/-S (ft)	+E/-W (ft)	Northing (ft)	Easting (ft)	Latitude	Longitude
- hit/miss target									
- Shape									
TARGET BOX 400' X	0.00	0.00	6,700.0	843.3	601.7	1,420,162.74	3,171,904.46	40° 29' 6.373 N	104° 52' 55.167 W
- plan hits target center									
- Rectangle (sides W400.0 H400.0 D850.0)									
TARGET BHL 1977F.	0.00	0.00	5,500.0	843.3	601.7	1,420,162.77	3,171,904.43	40° 29' 6.374 N	104° 52' 55.168 W
- plan hits target center									
- Point									



ENSIGN DIRECTIONAL

Planning Report

Database:	EDM den0-adp01 Server Data	Local Co-ordinate Reference:	Well RBF 23-15D
Company:	Synergy Resources	TVD Reference:	WELL @ 4794.0ft (Original Well Elev)
Project:	SEC.15-T6N-R67W	MD Reference:	WELL @ 4794.0ft (Original Well Elev)
Site:	RBF 24-15D Pad Sec.15-T6N-R67W	North Reference:	True
Well:	RBF 23-15D	Survey Calculation Method:	Minimum Curvature
Wellbore:	Wellbore #1		
Design:	Plan #1 (5-8-10)		

Casing Points

Measured Depth (ft)	Vertical Depth (ft)	Name	Casing Diameter (")	Hole Diameter (")
400.0	400.0	8 5/8"	8-5/8	12-1/4



Directional

Synergy Resources

SEC.15-T6N-R67W

RBF 24-15D Pad Sec.15-T6N-R67W

RBF 23-15D

Wellbore #1

Plan #1 (5-8-10)

Anticollision Report

12 May, 2010

Company:	Synergy Resources	Local Co-ordinate Reference:	Well RBF 23-15D
Project:	SEC.15-T6N-R67W	TVD Reference:	WELL @ 4794.0ft (Original Well Elev)
Reference Site:	RBF 24-15D Pad Sec.15-T6N-R67W	MD Reference:	WELL @ 4794.0ft (Original Well Elev)
Site Error:	0.0ft	North Reference:	True
Reference Well:	RBF 23-15D	Survey Calculation Method:	Minimum Curvature
Well Error:	0.0ft	Output errors are at	2.00 sigma
Reference Wellbore	Wellbore #1	Database:	EDM den0-adp01 Server Data
Reference Design:	Plan #1 (5-8-10)	Offset TVD Reference:	Offset Datum

Reference	Plan #1 (5-8-10)		
Filter type:	NO GLOBAL FILTER: Using user defined selection & filtering criteria		
Interpolation Method:	MD Interval 100.0ft	Error Model:	ISCWSA
Depth Range:	Unlimited	Scan Method:	Closest Approach 3D
Results Limited by:	Maximum center-center distance of 2,000.0ft	Error Surface:	Elliptical Conic
Warning Levels Evaluated at:	2.00 Sigma		

Survey Tool Program	Date 5/12/2010			
From (ft)	To (ft)	Survey (Wellbore)	Tool Name	Description
0.0	7,675.1	Plan #1 (5-8-10) (Wellbore #1)	MWD	MWD - Standard

Summary						
Site Name	Reference Measured Depth (ft)	Offset Measured Depth (ft)	Distance Between Centres (ft)	Distance Between Ellipses (ft)	Separation Factor	Warning
Offset Well - Wellbore - Design						
RBF 24-15D Pad Sec.15-T6N-R67W						
RBF 13-15D - Wellbore #1 - Plan #1 (5-8-10)	600.0	600.0	19.7	17.2	8.053	CC, ES
RBF 13-15D - Wellbore #1 - Plan #1 (5-8-10)	700.0	699.4	21.0	18.1	7.278	SF
RBF 15B (Vert.) - Wellbore #1 - Design #1	800.0	799.0	20.0	16.7	5.999	CC, ES
RBF 15B (Vert.) - Wellbore #1 - Design #1	900.0	899.0	21.5	17.7	5.672	SF

Offset Design RBF 24-15D Pad Sec.15-T6N-R67W - RBF 13-15D - Wellbore #1 - Plan #1 (5-8-10)											
Survey Program: O-MWD											
Reference	Offset	Semi Major Axis		Distance		Minimum Separation		Separation Factor	Warning		
Measured Depth (ft)	Vertical Depth (ft)	Measured Depth (ft)	Vertical Depth (ft)	Reference (ft)	Offset (ft)	Highside Toolface (°)	Offset Wellbore Centre +N/-S (ft)	+E/-W (ft)	Between Centres (ft)	Between Ellipses (ft)	
0.0	0.0	0.0	0.0	0.0	0.0	-0.81	19.7	-0.3	19.7		
100.0	100.0	100.0	100.0	0.1	0.1	-0.81	19.7	-0.3	19.7	19.5	0.20 100.616
200.0	200.0	200.0	200.0	0.3	0.3	-0.81	19.7	-0.3	19.7	19.0	0.65 30.500
300.0	300.0	300.0	300.0	0.5	0.5	-0.81	19.7	-0.3	19.7	18.6	1.09 17.975
400.0	400.0	400.0	400.0	0.8	0.8	-0.81	19.7	-0.3	19.7	18.1	1.54 12.742
500.0	500.0	500.0	500.0	1.0	1.0	-0.81	19.7	-0.3	19.7	17.7	1.99 9.869
600.0	600.0	600.0	600.0	1.2	1.2	-0.81	19.7	-0.3	19.7	17.2	2.44 8.053 CC, ES
700.0	700.0	699.4	699.4	1.4	1.4	-3.86	21.0	-1.4	21.0	18.1	2.89 7.278 SF
800.0	800.0	798.6	798.5	1.7	1.7	-10.95	24.9	-4.8	25.4	22.0	3.34 7.601
900.0	900.0	897.4	896.9	1.9	1.9	-56.33	31.3	-10.4	32.1	28.3	3.79 8.486
1,000.0	999.8	995.4	994.2	2.1	2.2	-67.89	40.2	-18.2	41.5	37.2	4.23 9.788
1,100.0	1,099.5	1,092.8	1,090.1	2.4	2.4	-78.42	51.5	-26.1	54.5	49.8	4.69 11.604
1,200.0	1,198.7	1,188.5	1,184.4	2.6	2.6	-86.89	65.0	-39.9	71.7	66.6	5.16 13.843
1,300.0	1,297.5	1,283.0	1,276.6	2.9	3.1	-93.31	80.7	-53.6	93.3	87.6	5.71 16.336
1,400.0	1,395.6	1,378.2	1,368.8	3.2	3.5	-98.36	98.2	-69.0	118.8	112.3	6.30 18.816
1,500.0	1,493.1	1,473.9	1,461.5	3.6	4.0	-102.79	116.1	-84.6	145.4	138.5	6.95 20.937
1,600.0	1,589.9	1,569.1	1,553.8	4.0	4.4	-106.80	133.8	-100.1	173.7	166.1	7.65 22.706
1,700.0	1,686.6	1,664.3	1,646.0	4.4	4.9	-110.05	151.5	-115.8	202.7	194.4	8.39 24.160
1,800.0	1,783.4	1,759.4	1,738.2	4.9	5.3	-112.40	169.3	-131.1	232.2	223.0	9.15 25.366
1,900.0	1,880.1	1,854.8	1,830.4	5.3	5.8	-114.23	187.0	-146.6	261.9	252.0	9.93 26.371
2,000.0	1,976.9	1,949.8	1,922.7	5.8	6.3	-115.69	204.7	-162.1	291.8	281.1	10.72 27.216
2,100.0	2,073.6	2,045.0	2,014.9	6.3	6.8	-116.87	222.4	-177.7	321.9	310.4	11.52 27.933
2,200.0	2,170.4	2,140.2	2,107.1	6.8	7.2	-117.86	240.2	-193.2	352.1	339.7	12.33 28.546

CC - Min centre to center distance or convergent point, SF - min separation factor, ES - min ellipse separation

Company:	Synergy Resources	Local Co-ordinate Reference:	Well RBF 23-15D
Project:	SEC.15-T6N-R67W	TVD Reference:	WELL @ 4794.0ft (Original Well Elev)
Reference Site:	RBF 24-15D Pad Sec.15-T6N-R67W	MD Reference:	WELL @ 4794.0ft (Original Well Elev)
Site Error:	0.0ft	North Reference:	True
Reference Well:	RBF 23-15D	Survey Calculation Method:	Minimum Curvature
Well Error:	0.0ft	Output errors are at	2.00 sigma
Reference Wellbore:	Wellbore #1	Database:	EDM den0-adp01 Server Data
Reference Design:	Plan #1 (5-8-10)	Offset TVD Reference:	Offset Datum

Offset Design RBF 24-15D Pad Sec.15-T6N-R67W - RBF 13-15D - Wellbore #1 - Plan #1 (5-8-10)														Offset Site Error:	0.0 ft
Survey Program: 0-MWD														Offset Well Error:	0.0 ft
Measured Depth (ft)	Vertical Depth (ft)	Measured Depth (ft)	Vertical Depth (ft)	Reference (ft)	Offset (ft)	Semi Major Axis (ft)	Highside Toolface (°)	Offset Wellbore Centre +N-S (ft)	+E-W (ft)	Between Centres (ft)	Between Ellipses (ft)	Minimum Separation (ft)	Separation Factor	Warning	
2,300.0	2,267.1	2,235.4	2,199.3	7.3	7.7	-118.89		257.9	-208.7	382.3	369.2	13.15	29.079		
2,400.0	2,363.9	2,330.5	2,291.6	7.8	8.2	-119.39		275.6	-224.2	412.6	398.6	13.97	29.542		
2,500.0	2,460.6	2,425.7	2,383.8	8.3	8.7	-120.00		293.3	-239.7	443.0	428.2	14.79	29.949		
2,600.0	2,557.4	2,520.9	2,476.0	8.8	9.2	-120.54		311.1	-255.2	473.4	457.7	15.62	30.308		
2,700.0	2,654.1	2,616.1	2,568.2	9.3	9.7	-121.00		328.8	-270.7	503.8	487.3	16.45	30.628		
2,800.0	2,750.8	2,711.3	2,660.4	9.8	10.2	-121.42		346.5	-286.2	534.2	517.0	17.28	30.914		
2,900.0	2,847.6	2,806.5	2,752.7	10.3	10.7	-121.79		364.2	-301.7	564.7	546.8	18.12	31.171		
3,000.0	2,944.3	2,901.8	2,844.9	10.8	11.1	-122.12		382.0	-317.2	595.2	576.3	18.95	31.404		
3,100.0	3,041.1	2,998.6	2,937.1	11.3	11.6	-122.42		399.7	-332.7	625.7	605.9	19.79	31.615		
3,200.0	3,137.8	3,092.0	3,029.3	11.9	12.1	-122.69		417.4	-348.2	656.3	635.8	20.63	31.807		
3,300.0	3,234.6	3,187.2	3,121.6	12.4	12.6	-122.94		435.1	-363.7	686.8	665.3	21.47	31.983		
3,400.0	3,331.3	3,282.4	3,213.8	12.9	13.1	-123.17		452.8	-379.2	717.3	695.0	22.32	32.144		
3,500.0	3,428.1	3,377.5	3,306.0	13.4	13.6	-123.38		470.8	-394.8	747.9	724.7	23.16	32.293		
3,600.0	3,524.8	3,472.7	3,398.2	13.9	14.1	-123.57		488.3	-410.3	778.5	754.5	24.00	32.431		
3,700.0	3,621.6	3,567.9	3,490.5	14.4	14.6	-123.75		506.0	-425.8	809.1	784.2	24.85	32.558		
3,800.0	3,718.3	3,663.1	3,582.7	15.0	15.1	-123.91		523.8	-441.3	839.6	813.9	25.70	32.676		
3,900.0	3,815.1	3,758.3	3,674.9	15.5	15.6	-124.06		541.5	-456.8	870.2	843.7	26.54	32.786		
4,000.0	3,911.8	3,853.5	3,767.1	16.0	16.1	-124.21		559.2	-472.3	900.8	873.4	27.39	32.889		
4,100.0	4,008.6	3,948.8	3,859.3	16.5	16.6	-124.34		577.0	-487.8	931.4	903.2	28.24	32.985		
4,200.0	4,105.3	4,043.8	3,951.6	17.0	17.1	-124.46		594.7	-503.3	962.0	932.9	29.09	33.075		
4,300.0	4,202.1	4,139.0	4,043.8	17.6	17.6	-124.58		612.4	-518.8	992.6	962.7	29.93	33.160		
4,400.0	4,298.8	4,234.2	4,136.0	18.1	18.1	-124.69		630.1	-534.3	1,023.2	992.4	30.78	33.239		
4,500.0	4,395.6	4,329.4	4,228.2	18.6	18.6	-124.80		647.9	-549.8	1,053.8	1,022.2	31.63	33.314		
4,600.0	4,492.3	4,424.5	4,320.5	19.1	19.1	-124.89		665.6	-565.3	1,084.5	1,052.0	32.48	33.385		
4,700.0	4,589.1	4,519.7	4,412.7	19.6	19.6	-124.99		683.3	-580.8	1,115.1	1,081.7	33.33	33.452		
4,800.0	4,685.8	4,614.9	4,504.9	20.2	20.1	-125.07		701.0	-596.3	1,145.7	1,111.5	34.18	33.515		
4,900.0	4,782.6	4,710.1	4,597.1	20.7	20.6	-125.19		718.8	-611.9	1,176.3	1,141.3	35.04	33.570		
5,000.0	4,879.8	4,805.6	4,689.7	21.1	21.1	-125.70		736.6	-627.4	1,205.8	1,169.9	35.89	33.597		
5,100.0	4,977.8	4,901.7	4,782.8	21.4	21.6	-126.02		754.4	-643.1	1,233.4	1,196.7	36.70	33.607		
5,200.0	5,076.4	5,032.7	4,910.3	21.7	22.1	-126.16		776.9	-662.7	1,257.8	1,220.3	37.52	33.520		
5,300.0	5,175.6	5,169.7	5,045.0	22.0	22.6	-126.26		795.7	-679.2	1,277.3	1,239.1	38.22	33.418		
5,400.0	5,275.1	5,308.8	5,182.8	22.2	22.9	-126.33		809.9	-691.5	1,291.6	1,252.8	38.81	33.279		
5,500.0	5,374.9	5,449.5	5,323.0	22.4	23.2	-126.37		819.0	-699.5	1,300.8	1,261.6	39.29	33.112		
5,600.0	5,474.9	5,591.0	5,464.4	22.5	23.4	-126.39		822.9	-703.0	1,304.8	1,265.1	39.65	32.909		
5,700.0	5,574.9	5,701.5	5,574.9	22.6	23.5	-90.89		823.1	-703.1	1,305.0	1,265.1	39.80	32.704		
5,800.0	5,674.9	5,801.5	5,674.9	22.7	23.6	-90.89		823.1	-703.1	1,305.0	1,264.8	40.16	32.496		
5,900.0	5,774.9	5,901.5	5,774.9	22.8	23.8	-90.89		823.1	-703.1	1,305.0	1,264.5	40.42	32.287		
6,000.0	5,874.9	6,001.5	5,874.9	23.0	23.9	-90.89		823.1	-703.1	1,305.0	1,264.3	40.68	32.079		
6,100.0	5,974.9	6,101.5	5,974.9	23.1	24.0	-90.89		823.1	-703.1	1,305.0	1,264.0	40.95	31.870		
6,200.0	6,074.9	6,201.5	6,074.9	23.2	24.1	-90.89		823.1	-703.1	1,305.0	1,263.7	41.22	31.662		
6,300.0	6,174.9	6,301.5	6,174.9	23.3	24.2	-90.89		823.1	-703.1	1,305.0	1,263.5	41.49	31.454		
6,400.0	6,274.9	6,401.5	6,274.9	23.4	24.4	-90.89		823.1	-703.1	1,305.0	1,263.2	41.76	31.247		
6,500.0	6,374.9	6,501.5	6,374.9	23.6	24.5	-90.89		823.1	-703.1	1,305.0	1,262.9	42.04	31.040		
6,600.0	6,474.9	6,601.5	6,474.9	23.7	24.6	-90.89		823.1	-703.1	1,305.0	1,262.6	42.32	30.833		
6,700.0	6,574.9	6,701.5	6,574.9	23.8	24.7	-90.89		823.1	-703.1	1,305.0	1,262.4	42.61	30.628		
6,800.0	6,674.9	6,801.5	6,674.9	24.0	24.9	-90.89		823.1	-703.1	1,305.0	1,262.1	42.89	30.423		
6,900.0	6,774.9	6,901.5	6,774.9	24.1	25.0	-90.89		823.1	-703.1	1,305.0	1,261.8	43.18	30.219		
7,000.0	6,874.9	7,001.5	6,874.9	24.2	25.1	-90.89		823.1	-703.1	1,305.0	1,261.5	43.48	30.015		
7,100.0	6,974.9	7,101.5	6,974.9	24.4	25.2	-90.89		823.1	-703.1	1,305.0	1,261.2	43.77	29.813		
7,200.0	7,074.9	7,201.5	7,074.9	24.5	25.4	-90.89		823.1	-703.1	1,305.0	1,260.9	44.07	29.611		
7,300.0	7,174.9	7,301.5	7,174.9	24.6	25.5	-90.89		823.1	-703.1	1,305.0	1,260.6	44.37	29.411		
7,400.0	7,274.9	7,401.5	7,274.9	24.8	25.7	-90.89		823.1	-703.1	1,305.0	1,260.3	44.67	29.211		

CC - Min centre to center distance or convergent point, SF - min separation factor, ES - min ellipse separation



ENSIGN DIRECTIONAL

Anticollision Report

Company:	Synergy Resources	Local Co-ordinate Reference:	Well RBF 23-15D
Project:	SEC.15-T6N-R67W	TVD Reference:	WELL @ 4794.0ft (Original Well Elev)
Reference Site:	RBF 24-15D Pad Sec.15-T6N-R67W	MD Reference:	WELL @ 4794.0ft (Original Well Elev)
Site Error:	0.0ft	North Reference:	True
Reference Well:	RBF 23-15D	Survey Calculation Method:	Minimum Curvature
Well Error:	0.0ft	Output errors are at	2.00 sigma
Reference Wellbore	Wellbore #1	Database:	EDM den0-adp01 Server Data
Reference Design:	Plan #1 (5-8-10)	Offset TVD Reference:	Offset Datum

Offset Design RBF 24-15D Pad Sec.15-T6N-R67W - RBF 13-15D - Wellbore #1 - Plan #1 (5-8-10)													Offset Site Error:	0.0 ft
Survey Program: 0-MWD													Offset Well Error:	0.0 ft
Reference		Offset		Semi Major Axis			Distance						Warning	
Measured Depth (ft)	Vertical Depth (ft)	Measured Depth (ft)	Vertical Depth (ft)	Reference (ft)	Offset (ft)	Highside Toolface (°)	Offset Wellbore Centre +N-S (ft)	Offset Wellbore Centre +E-W (ft)	Between Centres (ft)	Between Ellipses (ft)	Minimum Separation (ft)	Separation Factor		
7,500.0	7,374.9	7,501.5	7,374.9	24.9	25.8	-90.89	823.1	-703.1	1,305.0	1,260.0	44.98	29.013		
7,600.0	7,474.9	7,601.5	7,474.9	25.1	25.9	-90.89	823.1	-703.1	1,305.0	1,259.7	45.29	28.816		
7,675.1	7,550.0	7,676.6	7,550.0	25.2	26.0	-90.89	823.1	-703.1	1,305.0	1,259.4	45.52	28.669		

Company:	Synergy Resources	Local Co-ordinate Reference:	Well RBF 23-15D
Project:	SEC.15-T6N-R67W	TVD Reference:	WELL @ 4794.0ft (Original Well Elev)
Reference Site:	RBF 24-15D Pad Sec.15-T6N-R67W	MD Reference:	WELL @ 4794.0ft (Original Well Elev)
Site Error:	0.0ft	North Reference:	True
Reference Well:	RBF 23-15D	Survey Calculation Method:	Minimum Curvature
Well Error:	0.0ft	Output errors are at	2.00 sigma
Reference Wellbore	Wellbore #1	Database:	EDM den0-adp01 Server Data
Reference Design:	Plan #1 (5-8-10)	Offset TVD Reference:	Offset Datum

Offset Design RBF 24-15D Pad Sec.15-T6N-R67W - RBF 15B (Vert.) - Wellbore #1 - Design #1													Offset Site Error:	0.0 ft
Survey Program: 0-MWD													Offset Well Error:	0.0 ft
Reference	Offset	Semi Major Axis		Distance		Minimum		Separation		Warning				
Measured Depth (ft)	Vertical Depth (ft)	Measured Depth (ft)	Vertical Depth (ft)	Reference (ft)	Offset (ft)	Highside Toolface (°)	Offset Wellbore Centre +N-S (ft)	+E-W (ft)	Between Centres (ft)	Between Ellipses (ft)	Minimum Separation (ft)	Separation Factor		
0.0	0.0	0.0	0.0	0.0	0.0	180.00	-20.0	0.0	20.1					
100.0	100.0	99.0	99.0	0.1	0.1	180.00	-20.0	0.0	20.0	19.8	0.19	102.984		
200.0	200.0	199.0	199.0	0.3	0.3	180.00	-20.0	0.0	20.0	19.4	0.64	31.171		
300.0	300.0	299.0	299.0	0.5	0.5	180.00	-20.0	0.0	20.0	18.9	1.09	18.343		
400.0	400.0	399.0	399.0	0.8	0.8	180.00	-20.0	0.0	20.0	18.5	1.54	12.995		
500.0	500.0	499.0	499.0	1.0	1.0	180.00	-20.0	0.0	20.0	18.0	1.99	10.062		
600.0	600.0	599.0	599.0	1.2	1.2	180.00	-20.0	0.0	20.0	17.6	2.44	8.209		
700.0	700.0	699.0	699.0	1.4	1.4	180.00	-20.0	0.0	20.0	17.1	2.89	6.932		
800.0	800.0	799.0	799.0	1.7	1.7	180.00	-20.0	0.0	20.0	16.7	3.34	5.999 CC, ES		
900.0	900.0	899.0	899.0	1.9	1.9	147.18	-20.0	0.0	21.5	17.7	3.79	5.872 SF		
1,000.0	999.8	998.8	998.8	2.1	2.1	153.39	-20.0	0.0	26.0	21.8	4.23	6.150		
1,100.0	1,099.5	1,098.5	1,098.5	2.4	2.3	159.92	-20.0	0.0	34.1	29.4	4.68	7.281		
1,200.0	1,198.7	1,197.7	1,197.7	2.6	2.6	165.11	-20.0	0.0	45.7	40.6	5.12	8.930		
1,300.0	1,297.5	1,296.5	1,296.5	2.9	2.8	168.83	-20.0	0.0	61.0	55.4	5.55	10.977		
1,400.0	1,395.8	1,394.8	1,394.8	3.2	3.0	171.43	-20.0	0.0	79.8	73.8	5.98	13.329		
1,500.0	1,493.1	1,492.1	1,492.1	3.6	3.2	173.25	-20.0	0.0	102.1	95.7	6.41	15.919		
1,600.0	1,589.9	1,588.9	1,588.9	4.0	3.4	174.57	-20.0	0.0	127.1	120.2	6.86	18.519		
1,700.0	1,686.6	1,685.6	1,685.6	4.4	3.7	175.47	-20.0	0.0	152.3	144.9	7.32	20.786		
1,800.0	1,783.4	1,782.4	1,782.4	4.9	3.9	176.11	-20.0	0.0	177.5	169.7	7.79	22.772		
1,900.0	1,880.1	1,879.1	1,879.1	5.3	4.1	176.60	-20.0	0.0	202.7	194.4	8.27	24.523		
2,000.0	1,976.9	1,975.9	1,975.9	5.8	4.3	176.98	-20.0	0.0	228.0	219.2	8.74	26.077		
2,100.0	2,073.6	2,072.6	2,072.6	6.3	4.5	177.28	-20.0	0.0	253.2	244.0	9.22	27.483		
2,200.0	2,170.4	2,169.4	2,169.4	6.8	4.7	177.52	-20.0	0.0	278.5	268.8	9.70	28.706		
2,300.0	2,267.1	2,266.1	2,266.1	7.3	5.0	177.73	-20.0	0.0	303.8	293.6	10.18	29.827		
2,400.0	2,363.9	2,362.9	2,362.9	7.8	5.2	177.91	-20.0	0.0	329.0	318.4	10.67	30.842		
2,500.0	2,460.6	2,459.6	2,459.6	8.3	5.4	178.05	-20.0	0.0	354.3	343.1	11.15	31.765		
2,600.0	2,557.4	2,556.4	2,556.4	8.8	5.6	178.18	-20.0	0.0	379.6	367.9	11.64	32.608		
2,700.0	2,654.1	2,653.1	2,653.1	9.3	5.8	178.30	-20.0	0.0	404.8	392.7	12.13	33.380		
2,800.0	2,750.8	2,749.8	2,749.8	9.8	6.1	178.40	-20.0	0.0	430.1	417.5	12.62	34.090		
2,900.0	2,847.6	2,846.6	2,846.6	10.3	6.3	178.49	-20.0	0.0	455.4	442.3	13.11	34.744		
3,000.0	2,944.3	2,943.3	2,943.3	10.8	6.5	178.57	-20.0	0.0	480.7	467.1	13.60	35.350		
3,100.0	3,041.1	3,040.1	3,040.1	11.3	6.7	178.64	-20.0	0.0	506.0	491.9	14.09	35.912		
3,200.0	3,137.8	3,136.8	3,136.8	11.9	6.9	178.70	-20.0	0.0	531.2	516.7	14.58	36.434		
3,300.0	3,234.6	3,233.6	3,233.6	12.4	7.1	178.78	-20.0	0.0	556.5	541.5	15.07	36.921		
3,400.0	3,331.3	3,330.3	3,330.3	12.9	7.4	178.82	-20.0	0.0	581.8	566.2	15.57	37.376		
3,500.0	3,428.1	3,427.1	3,427.1	13.4	7.6	178.86	-20.0	0.0	607.1	591.0	16.06	37.802		
3,600.0	3,524.8	3,523.8	3,523.8	13.9	7.8	178.91	-20.0	0.0	632.4	615.8	16.55	38.202		
3,700.0	3,621.6	3,620.6	3,620.6	14.4	8.0	178.95	-20.0	0.0	657.7	640.6	17.05	38.577		
3,800.0	3,718.3	3,717.3	3,717.3	15.0	8.2	178.99	-20.0	0.0	682.9	665.4	17.54	38.931		
3,900.0	3,815.1	3,814.1	3,814.1	15.5	8.4	179.03	-20.0	0.0	708.2	690.2	18.04	39.264		
4,000.0	3,911.8	3,910.8	3,910.8	16.0	8.7	179.06	-20.0	0.0	733.5	715.0	18.53	39.579		
4,100.0	4,008.6	4,007.6	4,007.6	16.5	8.9	179.09	-20.0	0.0	758.8	739.8	19.03	39.877		
4,200.0	4,105.3	4,104.3	4,104.3	17.0	9.1	179.12	-20.0	0.0	784.1	764.6	19.52	40.159		
4,300.0	4,202.1	4,201.1	4,201.1	17.6	9.3	179.15	-20.0	0.0	809.4	789.3	20.02	40.427		
4,400.0	4,298.8	4,297.8	4,297.8	18.1	9.5	179.17	-20.0	0.0	834.6	814.1	20.52	40.681		
4,500.0	4,395.6	4,394.6	4,394.6	18.6	9.8	179.20	-20.0	0.0	859.9	838.9	21.01	40.923		
4,600.0	4,492.3	4,491.3	4,491.3	19.1	10.0	179.22	-20.0	0.0	885.2	863.7	21.51	41.153		
4,700.0	4,589.1	4,588.1	4,588.1	19.6	10.2	179.24	-20.0	0.0	910.5	888.5	22.01	41.373		
4,800.0	4,685.8	4,684.8	4,684.8	20.2	10.4	179.26	-20.0	0.0	935.8	913.3	22.50	41.582		
4,900.0	4,782.6	4,781.6	4,781.6	20.7	10.6	179.28	-20.0	0.0	961.1	938.1	23.01	41.772		
5,000.0	4,879.8	4,878.8	4,878.8	21.1	10.8	179.31	-20.0	0.0	986.4	960.9	23.54	41.927		
5,100.0	4,977.8	4,976.8	4,976.8	21.4	11.1	179.32	-20.0	0.0	1,004.3	980.3	24.03	41.793		

CC - Min centre to center distance or covergent point, SF - min separation factor, ES - min ellipse separation



ENSIGN DIRECTIONAL

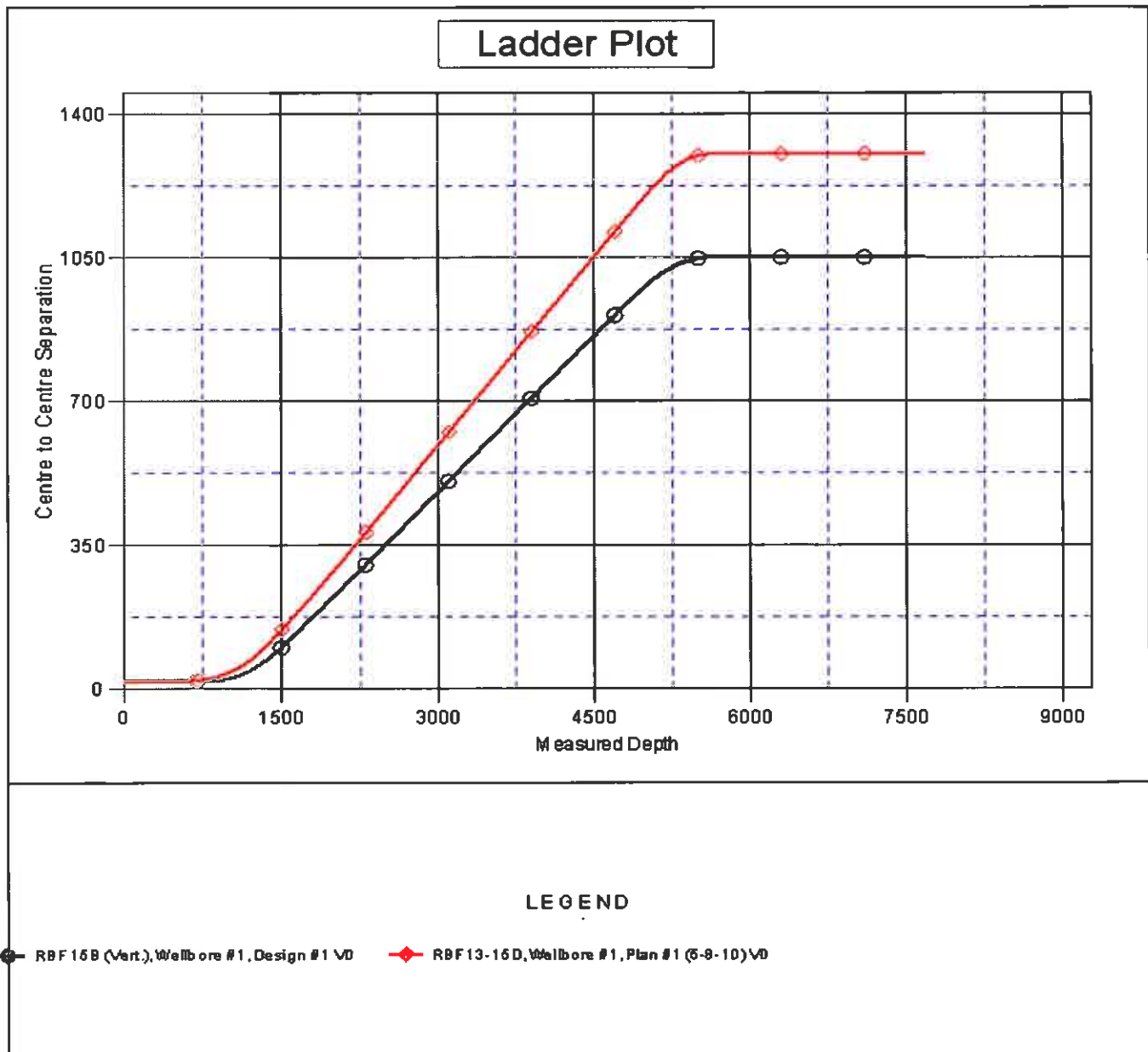
Anticollision Report

Company:	Synergy Resources	Local Co-ordinate Reference:	Well RBF 23-15D
Project:	SEC.15-T6N-R87W	TVD Reference:	WELL @ 4794.0ft (Original Well Elev)
Reference Site:	RBF 24-15D Pad Sec.15-T6N-R67W	MD Reference:	WELL @ 4794.0ft (Original Well Elev)
Site Error:	0.0ft	North Reference:	True
Reference Well:	RBF 23-15D	Survey Calculation Method:	Minimum Curvature
Well Error:	0.0ft	Output errors are at	2.00 sigma
Reference Wellbore	Wellbore #1	Database:	EDM den0-adp01 Server Data
Reference Design:	Plan #1 (5-8-10)	Offset TVD Reference:	Offset Datum

Offset Design RBF 24-15D Pad Sec.15-T6N-R87W - RBF 15B (Vert.) - Wellbore #1 - Design #1													Offset Site Error:	0.0 ft
Survey Program: 0-MWD													Offset Well Error:	0.0 ft
Measured Depth (ft)	Vertical Depth (ft)	Measured Depth (ft)	Vertical Depth (ft)	Reference (ft)	Offset (ft)	Highside Toolface (°)	Offset Wellbore Centre +N/-S (ft)	+E/-W (ft)	Between Centres (ft)	Between Ellipses (ft)	Minimum Separation (ft)	Separation Factor	Warning	
5,200.0	5,076.4	5,075.4	5,075.4	21.7	11.3	179.34	-20.0	0.0	1,020.9	996.4	24.49	41.678		
5,300.0	5,175.8	5,174.6	5,174.6	22.0	11.5	179.35	-20.0	0.0	1,033.9	1,009.0	24.92	41.486		
5,400.0	5,275.1	5,274.1	5,274.1	22.2	11.7	179.36	-20.0	0.0	1,043.5	1,018.2	25.31	41.222		
5,500.0	5,374.9	5,373.9	5,373.9	22.4	12.0	179.36	-20.0	0.0	1,049.6	1,023.9	25.67	40.890		
5,600.0	5,474.9	5,473.9	5,473.9	22.5	12.2	179.37	-20.0	0.0	1,052.2	1,026.2	25.89	40.491		
5,700.0	5,574.9	5,573.9	5,573.9	22.6	12.4	-145.13	-20.0	0.0	1,052.3	1,026.0	26.36	39.929		
5,800.0	5,674.9	5,673.9	5,673.9	22.7	12.6	-145.13	-20.0	0.0	1,052.3	1,025.6	26.77	39.316		
5,900.0	5,774.9	5,773.9	5,773.9	22.8	12.9	-145.13	-20.0	0.0	1,052.3	1,025.2	27.18	38.720		
6,000.0	5,874.9	5,873.9	5,873.9	23.0	13.1	-145.13	-20.0	0.0	1,052.3	1,024.7	27.59	38.140		
6,100.0	5,974.9	5,973.9	5,973.9	23.1	13.3	-145.13	-20.0	0.0	1,052.3	1,024.3	28.01	37.576		
6,200.0	6,074.9	6,073.9	6,073.9	23.2	13.5	-145.13	-20.0	0.0	1,052.3	1,023.9	28.42	37.027		
6,300.0	6,174.9	6,173.9	6,173.9	23.3	13.7	-145.13	-20.0	0.0	1,052.3	1,023.5	28.84	36.493		
6,400.0	6,274.9	6,273.9	6,273.9	23.4	14.0	-145.13	-20.0	0.0	1,052.3	1,023.1	29.25	35.973		
6,500.0	6,374.9	6,373.9	6,373.9	23.6	14.2	-145.13	-20.0	0.0	1,052.3	1,022.7	29.67	35.466		
6,600.0	6,474.9	6,473.9	6,473.9	23.7	14.4	-145.13	-20.0	0.0	1,052.3	1,022.2	30.09	34.973		
6,700.0	6,574.9	6,573.9	6,573.9	23.8	14.6	-145.13	-20.0	0.0	1,052.3	1,021.8	30.51	34.482		
6,800.0	6,674.9	6,673.9	6,673.9	24.0	14.9	-145.13	-20.0	0.0	1,052.3	1,021.4	30.93	34.023		
6,900.0	6,774.9	6,773.9	6,773.9	24.1	15.1	-145.13	-20.0	0.0	1,052.3	1,021.0	31.35	33.567		
7,000.0	6,874.9	6,873.9	6,873.9	24.2	15.3	-145.13	-20.0	0.0	1,052.3	1,020.6	31.77	33.121		
7,100.0	6,974.9	6,973.9	6,973.9	24.4	15.5	-145.13	-20.0	0.0	1,052.3	1,020.1	32.19	32.686		
7,200.0	7,074.9	7,073.9	7,073.9	24.5	15.8	-145.13	-20.0	0.0	1,052.3	1,019.7	32.62	32.262		
7,300.0	7,174.9	7,173.9	7,173.9	24.6	16.0	-145.13	-20.0	0.0	1,052.3	1,019.3	33.04	31.849		
7,400.0	7,274.9	7,273.9	7,273.9	24.8	16.2	-145.13	-20.0	0.0	1,052.3	1,018.9	33.47	31.445		
7,500.0	7,374.9	7,373.9	7,373.9	24.9	16.4	-145.13	-20.0	0.0	1,052.3	1,018.4	33.89	31.050		
7,600.0	7,474.9	7,473.9	7,473.9	25.1	16.7	-145.13	-20.0	0.0	1,052.3	1,018.0	34.32	30.665		
7,675.1	7,550.0	7,549.0	7,549.0	25.2	16.8	-145.13	-20.0	0.0	1,052.3	1,017.7	34.64	30.382		

Company:	Synergy Resources	Local Co-ordinate Reference:	Well RBF 23-15D
Project:	SEC.15-T6N-R67W	TVD Reference:	WELL @ 4794.0ft (Original Well Elev)
Reference Site:	RBF 24-15D Pad Sec.15-T6N-R67W	MD Reference:	WELL @ 4794.0ft (Original Well Elev)
Site Error:	0.0ft	North Reference:	True
Reference Well:	RBF 23-15D	Survey Calculation Method:	Minimum Curvature
Well Error:	0.0ft	Output errors are at	2.00 sigma
Reference Wellbore	Wellbore #1	Database:	EDM den0-adp01 Server Data
Reference Design:	Plan #1 (5-8-10)	Offset TVD Reference:	Offset Datum

Reference Depths are relative to WELL @ 4794.0ft (Original Well Elev) Coordinates are relative to: RBF 23-15D
 Offset Depths are relative to Offset Datum
 Central Meridian Is 105° 30' 0.000 W °
 Coordinate System Is US State Plane 1983, Colorado Northern Zone
 Grid Convergence at Surface Is: 0.40°



ENSIGN Directional

ENSIGN DIRECTIONAL Anticollision Report

Company: Synergy Resources
Project: SEC.15-T6N-R67W
Reference Site: RBF 24-15D Pad Sec.15-T6N-R67W
Site Error: 0.0ft
Reference Well: RBF 23-15D
Well Error: 0.0ft
Reference Wellbore: Wellbore #1
Reference Design: Plan #1 (5-8-10)

Local Co-ordinate Reference: Well RBF 23-15D
TVD Reference: WELL @ 4794.0ft (Original Well Elev)
MD Reference: WELL @ 4794.0ft (Original Well Elev)
North Reference: True
Survey Calculation Method: Minimum Curvature
Output errors are at: 2.00 sigma
Database: EDM den0-adp01 Server Data
Offset TVD Reference: Offset Datum

Reference Depths are relative to WELL @ 4794.0ft (Original Well Elev) Coordinates are relative to: RBF 23-15D

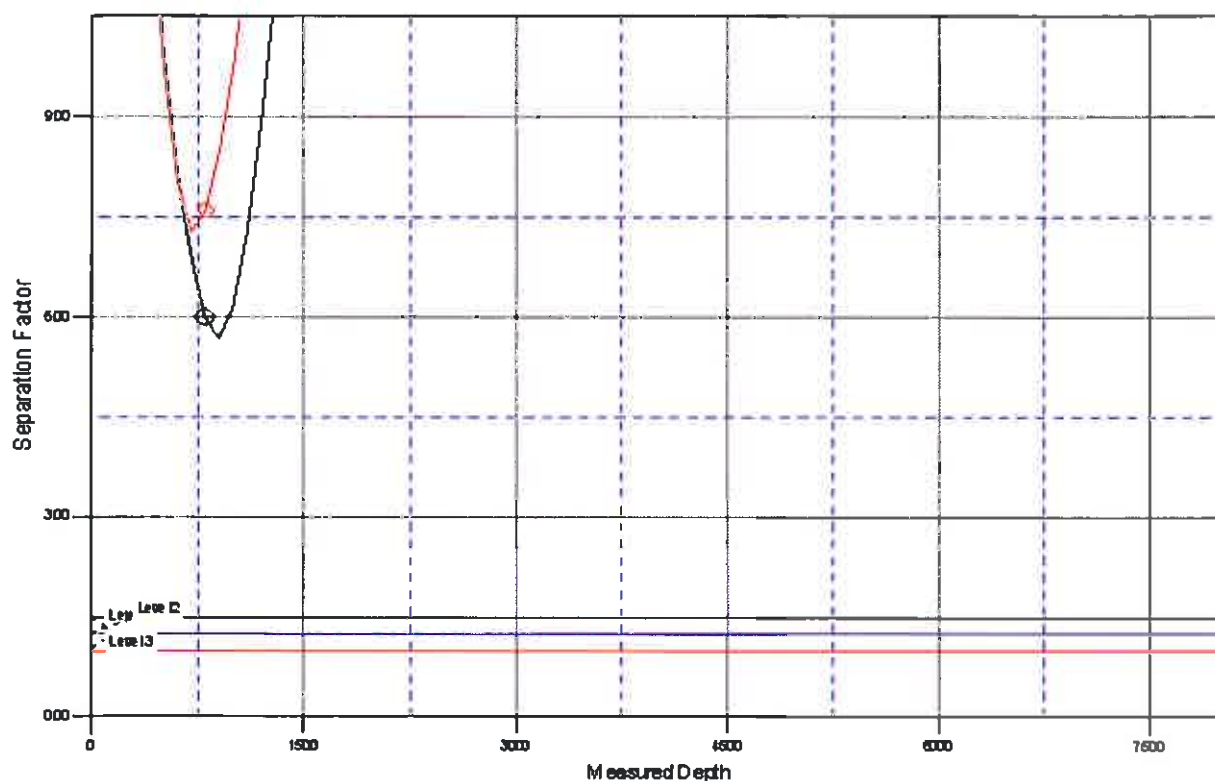
Offset Depths are relative to Offset Datum

Coordinate System is US State Plane 1983, Colorado Northern Zone

Central Meridian is 105° 30' 0.000 W °

Grid Convergence at Surface is: 0.40°

Separation Factor Plot



LEGEND

● RBF 15B (Vert.), Wellbore #1, Design #1 VD ◆ RBF 13-15D, Wellbore #1, Plan #1 (5-8-10) VD