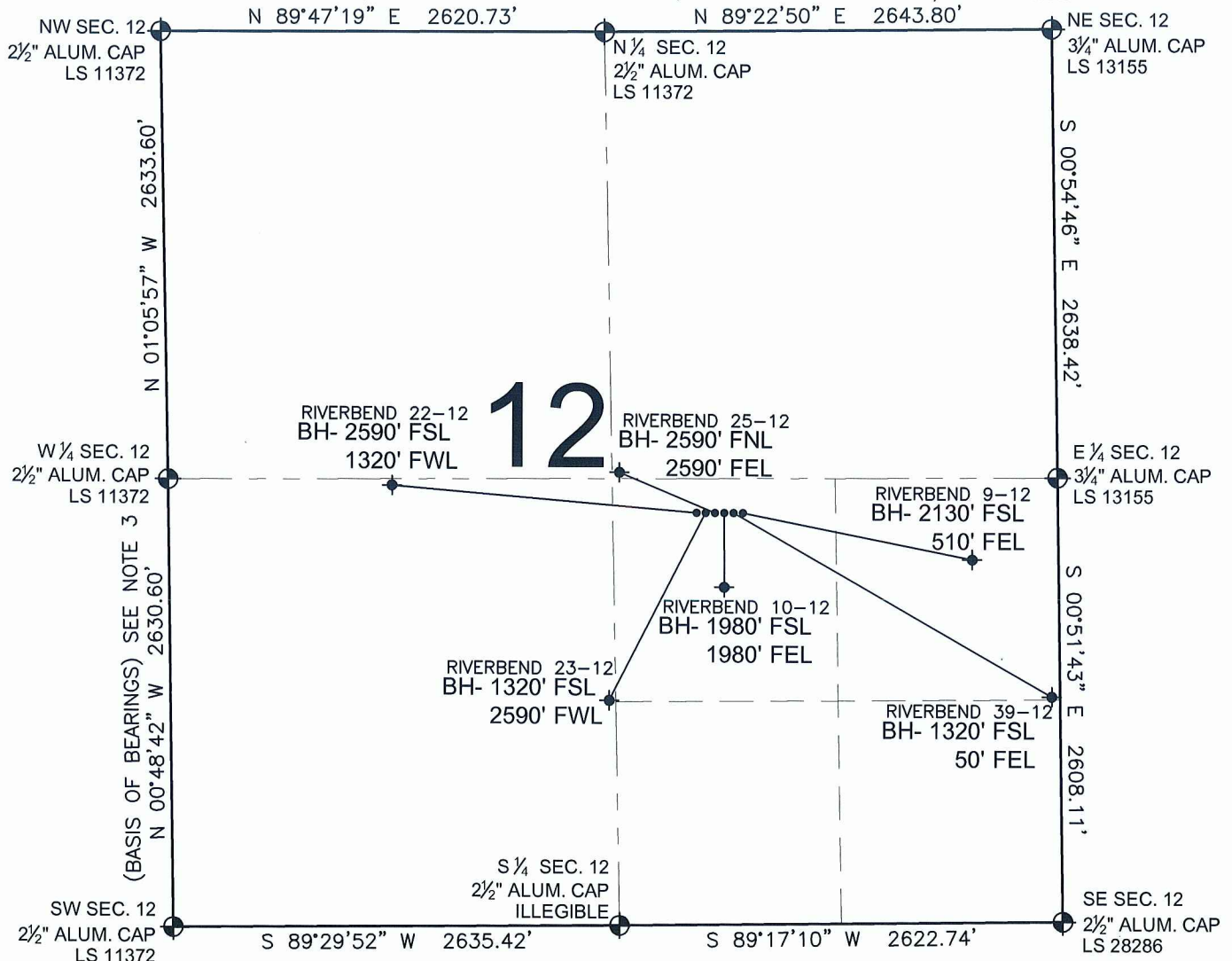


PAD DRAWING - RIVERBEND 6 PAD

SECTION 12, TOWNSHIP 1 NORTH, RANGE 67 WEST, 6TH P.M.



LEGEND

- = EXISTING MONUMENT
 = BOTTOM HOLE
 BH= BOTTOM HOLE
 = PROPOSED WELL
 = EXISTING WELL

NOTES:

- THIS SURVEY WAS DONE BY GPS METHODS AND CONFORMS TO THE MINIMUM STANDARDS SET BY THE C.O.G.C.C., RULE NO. 215
- ELEVATIONS SHOWN AT THE WELL HEAD, AS WELL AS HORIZONTAL CONTROL, ARE BASED ON GPS-RTK VALUES DERIVED FROM DOING 2-HOUR STATIC GPS SESSIONS AND REDUCTIONS USING O.P.U.S. SOLUTIONS.
VERTICAL = NAVD88; HORIZONTAL = NAD83/92
- THE BEARINGS SHOWN HEREON ARE BASED ON GPS OBSERVATIONS BETWEEN THE MONUMENTS SHOWN HEREON AS FOUND ON THE FIELD DATE BELOW.
- DISTANCES SHOWN ARE AT GROUND LEVEL, AS MEASURED IN THE FIELD, WITH TIES TO WELLS MEASURED AT A PERPENDICULAR TO SECTION LINES.

NOTES:

- RIVERBEND 22-12 TO BE AT 2419' FSL, 2139' FEL.
 BOTTOM HOLE AT 2590' FSL & 1320' FWL.
 RIVERBEND 23-12 TO BE AT 2419' FSL, 2123' FEL.
 BOTTOM HOLE AT 1320' FSL & 2590' FWL.
 RIVERBEND 25-12 TO BE AT 2419' FSL, 2107' FEL.
 BOTTOM HOLE AT 2590' FNL & 2590' FEL.
 RIVERBEND 10-12 TO BE AT 2419' FSL, 2091' FEL.
 BOTTOM HOLE AT 1980' FSL & 1980' FEL.
 RIVERBEND 39-12 TO BE AT 2419' FSL, 2075' FEL.
 BOTTOM HOLE AT 1320' FSL & 50' FEL.
 RIVERBEND 9-12 TO BE AT 2419' FSL, 2059' FEL.
 BOTTOM HOLE AT 2130' FEL & 510' FEL.

0 500 1000

SCALE: 1"=1000'

REVISIONS

| INITIAL | DATE |
|---------|------|
| | |
| | |
| | |
| | |
| | |
| | |

PREPARED BY:

PFS

Petroleum Field Services, LLC
1801 W. 13th Ave.
Denver, CO 80204



KERR-MCGEE OIL & GAS ONSHORE LP

FIELD DATE:
04-27-10

DRAWING DATE:
05-04-10

BY:
SMF

PAD NAME:
RIVERBEND 6 PAD

SURFACE LOCATION:
WELD COUNTY, COLORADO
NW 1/4 SE 1/4, SEC. 12, T1N, R67W