

Berry Petroleum Company

1999 Broadway, Suite 3700
Denver, CO 80202

Main (303) 999-4400
Fax (303) 999-4401

www.bry.com

June 10, 2010

Mr. Bob Weaver
Encana Oil & Gas (USA) Inc.
370 17th Street, Suite 1700
Denver, CO 80202

RE: 30 Day Notice Requirement (Rule 305 and 306)
Long Ridge 10B M15 595, 06D, 11D,
10D, 15B, 02B, 02D
J15 595 Pad - NWSE Section 15-5S-95W
Garfield County, Colorado

Dear Bob,

Please be advised that Berry Petroleum Company will be re-filing permits with the Colorado Oil and Gas Conservation Commission for the above-referenced wells.

- There have been no changes on land use and lease description.
- The pad has been built and the pit has been constructed and lined.
- Conductors have been set.
- One well has been drilled to T.D .
- No rig is on-site at this time.
- The re-files will not require any expansion and/or additional surface disturbance of the pad.
- The location does not require a variance from any of the rules listed in Rule 306.d. (1). (A).(ii).
- The location is not in a restricted surface occupancy area or in a sensitive wildlife habitat area.

Pursuant to Rule 305 and 306, the enclosed notification is required as part of the permitting process. Please sign and date where indicated and return to my attention.

Please contact me at 303.999.4246 if you have any questions.

Thank you for your assistance in this matter.

Very truly yours,

Patsy Branson
Senior Landman

:enclosures

cc: Janni Keidel
Land Well file

NOTICE REQUIREMENTS (RULE 305)
(J15 595 Pad)

**Re: Well Name – Long Ridge 10B J15 595, 06B, 11D,
10D, 15B, 02B, 02D – drilled from well pad located in
the NWSE of Section 15, 5S 95W, Garfield County, CO**

In accordance with the Colorado Oil and Gas Conservation Commission for Notices of Oil and Gas Operations, Rule 305, the following information is required to be provided:

- Operations on the above referenced wells are estimated to commence on September 15, 2010.
- The operator will be: Berry Petroleum Company
1999 Broadway, Suite # 3700
Denver, Colorado 80202
(303) 999-4400
- You may contact: Patsy Branson, Senior Landman at (303) 999-4246,
if you have any questions regarding this notice.

Long Ridge 10B J15 595 – API #05-045-11291-00

The legal description of the lands upon which operations will be conducted are:

Surface Hole: 1,696' FSL and 1,976' FEL, Sec. 15, T5S, R95W

Bottom Hole: 2,310' FSL and 2,310' FEL, Sec. 15, T5S, R95W
Garfield County, Colorado.

Long Ridge 06D J15 595 – API #05-045-11287-00

The legal description of the lands upon which operations will be conducted are:

Surface Hole: 1,682' FSL and 1,970' FEL, Sec. 15, T5S, R95W

Bottom Hole: 2,310' FNL and 2,310' FWL, Sec. 15, T5S, R95W
Garfield County, Colorado.

Page 2

J15 595 Pad (7 wells)

Encana Oil & Gas (USA Inc.)

June 10, 2010

Long Ridge 11D J15 595 – API #05-045-11290-00

The legal description of the lands upon which operations will be conducted are:

Surface Hole: 1,668' FSL and 1,963' FEL, Sec. 15, T5S, R95W

Bottom Hole: 1,650' FSL and 2,310' FWL, Sec. 15, T5S, R95W
Garfield County, Colorado.

Long Ridge 10D J15 595 – API #05-045-11292-00

The legal description of the lands upon which operations will be conducted are:

Surface Hole: 1,655' FSL and 1,957' FEL, Sec. 15, T5S, R95W

Bottom Hole: 1,650' FSL and 1,650' FEL, Sec. 15, T5S, R95W
Garfield County, Colorado.

Long Ridge 15B J15 595 – API #05-045-11289-00

The legal description of the lands upon which operations will be conducted are:

Surface Hole: 1,641' FSL and 1,950' FEL, Sec. 15, T5S, R95W

Bottom Hole: 990' FSL and 2,310' FEL, Sec. 15, T5S, R95W
Garfield County, Colorado.

Long Ridge 02B J15 595 – API #05-045-11174-00

The legal description of the lands upon which operations will be conducted are:

Surface Hole: 1,628' FSL and 1,944' FEL, Sec. 15, T5S, R95W

Bottom Hole: 330' FNL and 2,310' FEL, Sec. 22, T5S, R95W
Garfield County, Colorado.

Long Ridge 02D J15 595 – API #05-045-11295-00

The legal description of the lands upon which operations will be conducted are:

Surface Hole: 1,614' FSL and 1,937' FEL, Sec. 15, T5S, R95W

Bottom Hole: 990' FNL and 1,650' FEL, Sec. 22, T5S, R95W
Garfield County, Colorado.

Page 3
J15 595 Pad (7 wells)
Encana Oil & Gas (USA Inc.)
June 10, 2010

- The surface owner has the responsibility for notifying any affected tenant of the proposed operations.
- A brochure describing surface owner rights is available upon request from:
Colorado Oil and Gas Conservation Commission
1120 Lincoln Street
Suite 801
Denver, Co 80203

By signing below, the surface owner waives the above notification requirements of Rule 305.

Encana Oil & Gas (U.S.A.) Inc.

By: _____

Printed Name: _____

Title: _____

Date: _____

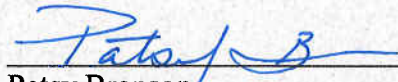
SURFACE OWNER CONSULTATION (RULE 306)
(J15 595 Pad)

Berry Petroleum Company confirms that the Surface Owner Consultation requirements of Rule 306 have been completed or waived for the following proposed well pad.

**Re: Well Name – Long Ridge 10B J15 595, 06B, 11D,
10D, 15B, 02B, 02D – drilled from well pad located in the
NWSE of Section 15, 5S 95W, Garfield County, CO**

Road Description: Existing roadway use and new construction as required for access was previously agreed upon by all parties.

Berry Petroleum Company



Patsy Branson
Senior Landman

6/10/10

Date

EnCana Oil & Gas (USA) Inc.

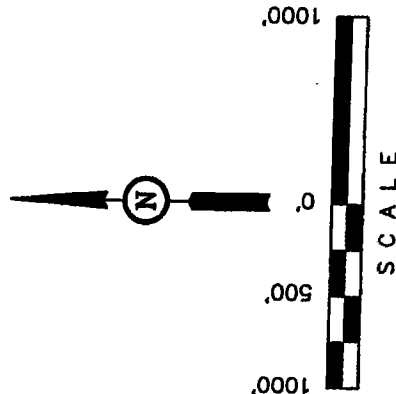
Well location, N. PARACHUTE EF10B J15 595,
located as shown in the NW 1/4 SE 1/4 of
Section 15, T5S, R95W, 6th P.M., Garfield
County, Colorado.

BASIS OF ELEVATION

SPOT ELEVATION AT THE NORTHWEST CORNER OF SECTION 30, T5S, R95W, 6th P.M. TAKEN FROM THE FORKED GULCH QUADRANGLE, COLORADO, GARFIELD COUNTY, 7.5 MINUTE SERIES (TOPOGRAPHICAL MAP) PUBLISHED BY THE UNITED STATES DEPARTMENT OF THE INTERIOR, GEOLOGICAL SURVEY. SAID ELEVATION IS MARKED AS BEING 5966 FEET.

BASIS OF BEARINGS

BASIS OF BEARINGS IS A G.P.S. OBSERVATION.

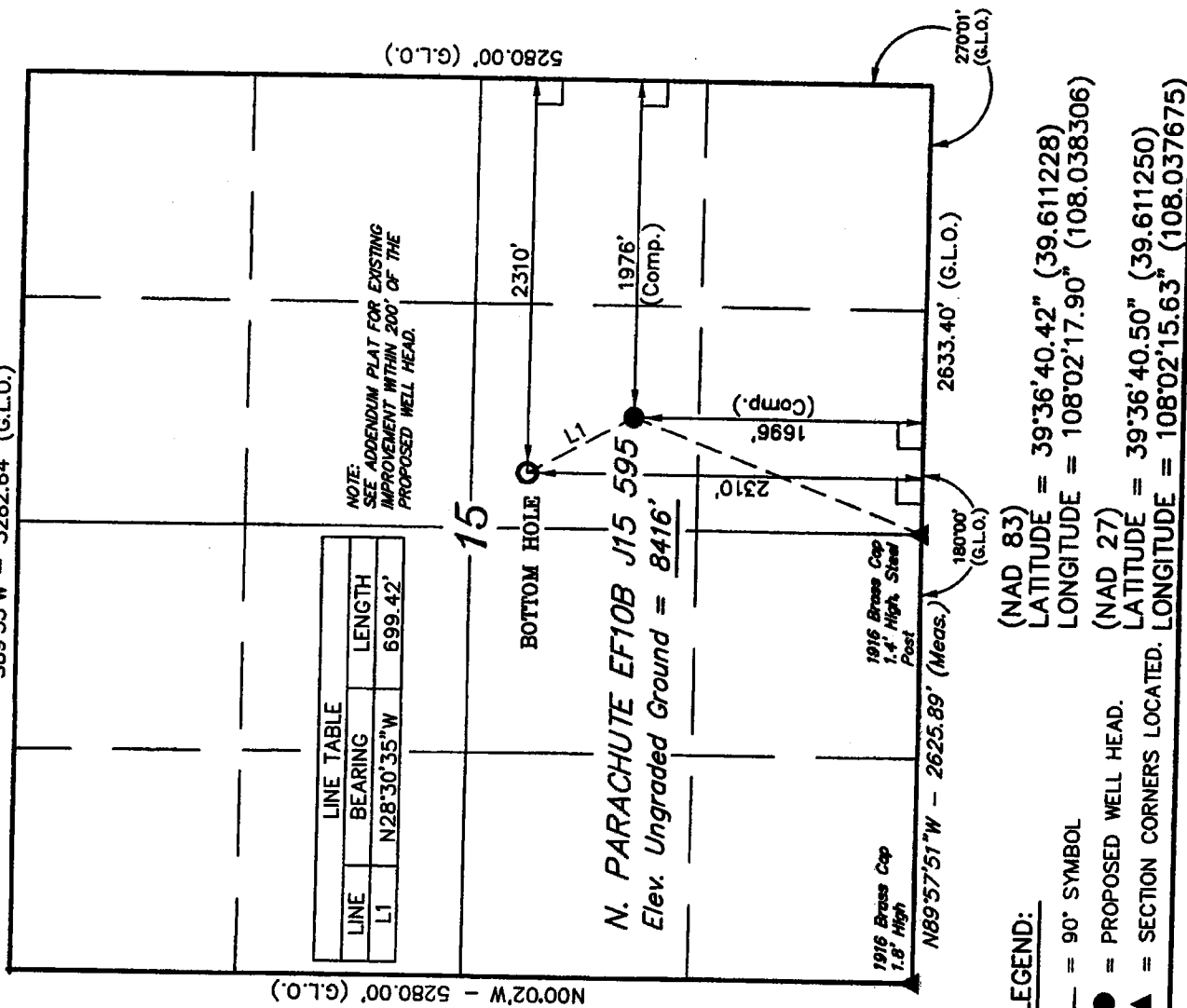


THIS IS TO CERTIFY THAT THE ABOVE STATED NOTES WERE PREPARED FROM
THE ACTUAL SURVEY FIELD NOTES OF ACTUAL SUPERVISOR OR UNDER MY
SUPERVISION AND THAT THE SAME ARE TRUE AND CORRECT TO THE
BEST OF MY KNOWLEDGE AND BELIEF.

Revised: 08-18-05 D.R.B.

UTAH ENGINEERING & LAND SURVEYING
85 SOUTH 200 EAST - VERNAL, UTAH 84078
(435) 789-1017

SCALE	1" = 1000'	DATE SURVEYED:	DATE DRAWN:
PARTY		06-22-05	08-12-05
		REFERENCES	
	G.O. B.H. D.R.B.	G.O. PLAT	
WEATHER		FILE	
	WARM		EnCana OIL & GAS (USA) INC



EnCana Oil & Gas (USA) INC.

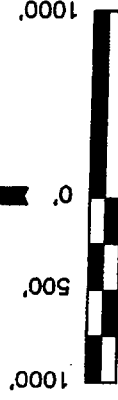
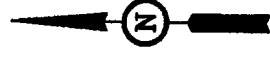
Well location, N. PARACHUTE EF06D J15 595, located as shown in the NW 1/4 SE 1/4 of Section 15, T5S, R95W, 6th P.M., Garfield County, Colorado.

BASIS OF ELEVATION

SPOT ELEVATION AT THE NORTHWEST CORNER OF SECTION 30, T5S, R95W, 6th P.M. TAKEN FROM THE FORKED GULCH QUADRANGLE, COLORADO, GARFIELD COUNTY, 7.5 MINUTE SERIES (TOPOGRAPHICAL MAP) PUBLISHED BY THE UNITED STATES DEPARTMENT OF THE INTERIOR, GEOLOGICAL SURVEY. SAID ELEVATION IS MARKED AS BEING 5966 FEET.

BASIS OF BEARINGS

BASIS OF BEARINGS IS A G.P.S. OBSERVATION.



SCALE

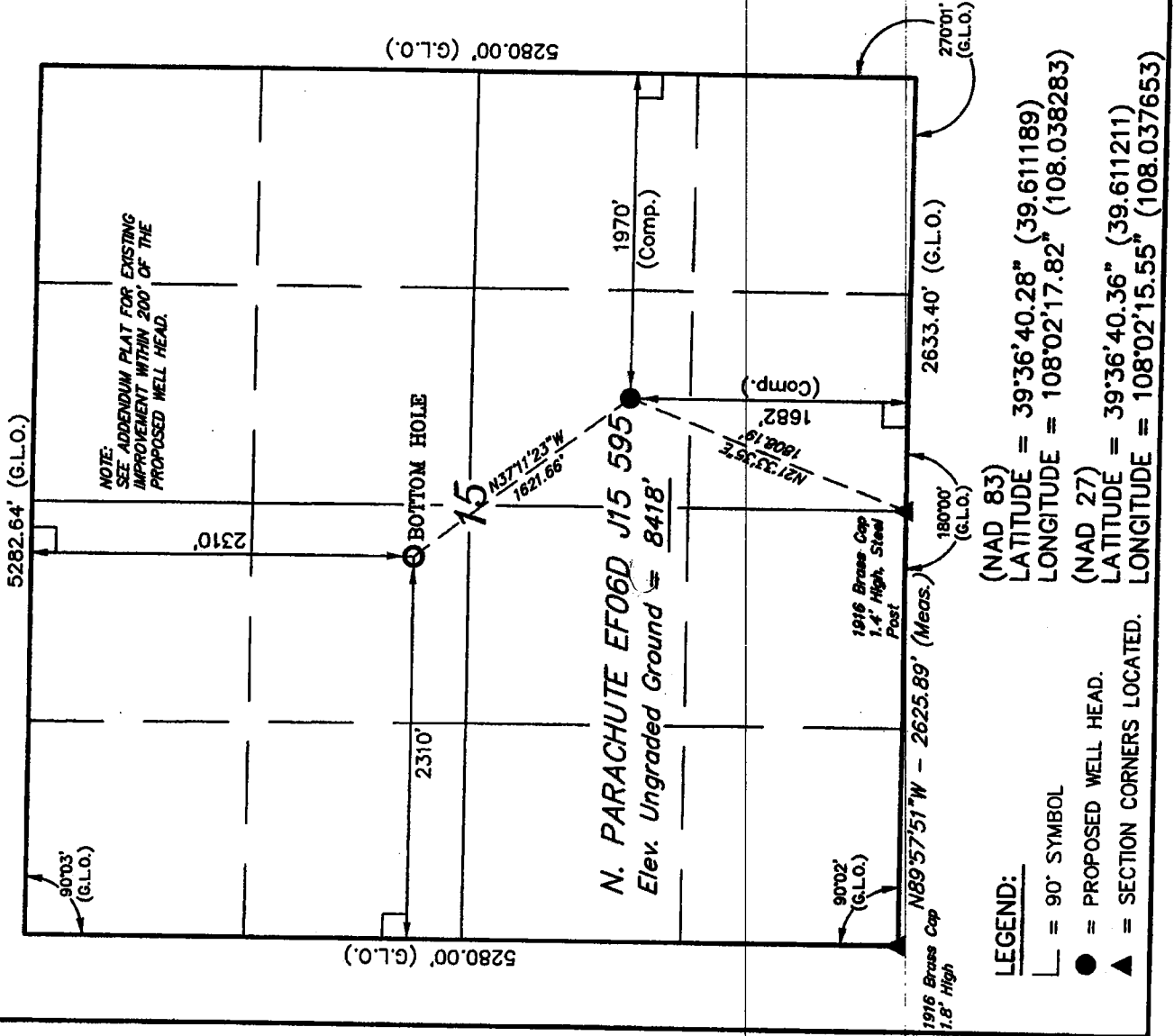
CERTIFICATE L. K. KA
THIS IS TO CERTIFY THAT THE SURVEY WAS PREPARED FROM FIELD NOTES OF ACTUAL SURVEYS MADE BY ME OR UNDER MY SUPERVISION AND THAT THE SAME ARE TRUE AND CORRECT TO THE BEST OF MY KNOWLEDGE AND BELIEF.
REGISTERED LAND SURVEYOR
STATE OF COLORADO
No. 1017

Revised: 08-18-05 D.R.B.

UNTIAH ENGINEERING & LAND SURVEYING
85 SOUTH 200 EAST - VERNAL, UTAH 84078
(435) 789-1017

SCALE 1" = 1000'	DATE SURVEYED: 06-22-05	DATE DRAWN: 08-12-05
PARTY G.O. B.H. D.R.B.	REFERENCES G.L.O. PLAT	
WEATHER WARM	FILE	EnCana Oil & Gas (USA) INC.

T5S, R95W, 6th P.M.



T5S, R95W, 6th P.M.

BERRY PETROLEUM COMPANY

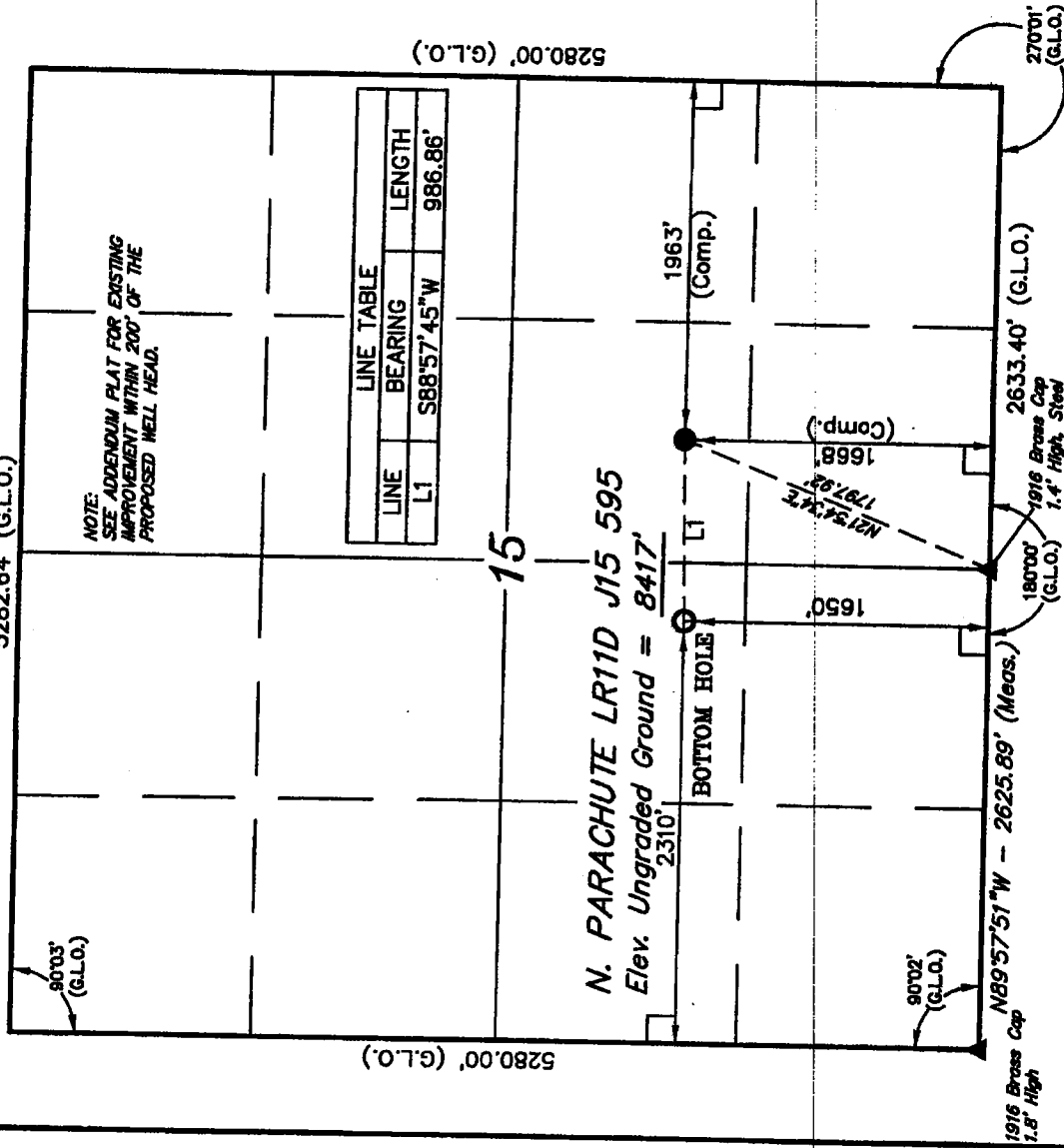
Well location, N. PARACHUTE LR11D J15 595, located as shown in the NW 1/4 SE 1/4 of Section 15, T5S, R95W, 6th P.M., Garfield County, Colorado.

BASIS OF ELEVATION

SPOT ELEVATION AT THE NORTHWEST CORNER OF SECTION 30, T5S, R95W, 6th P.M. TAKEN FROM THE FORKED GULCH QUADRANGLE, COLORADO, GARFIELD COUNTY, 7.5 MINUTE SERIES (TOPOGRAPHICAL MAP) PUBLISHED BY THE UNITED STATES DEPARTMENT OF THE INTERIOR, GEOLOGICAL SURVEY. SAID ELEVATION IS MARKED AS BEING 5966 FEET.

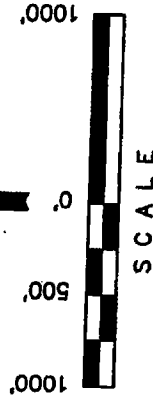
BASIS OF BEARINGS

BASIS OF BEARINGS IS A G.P.S. OBSERVATION.



LEGEND:

- = 90° SYMBOL
 - = PROPOSED WELL HEAD.
 - ▲ = SECTION CORNERS LOCATED.
- (NAD 83)
LATITUDE = 39°36'40.15" (39.611153)
LONGITUDE = 108°02'17.74" (108.038261)
- (NAD 27)
LATITUDE = 39°36'40.23" (39.611175)
LONGITUDE = 108°02'15.47" (108.037631)



CERTIFICATE

THIS IS TO CERTIFY THAT THE ABOVE PLAT WAS PREPARED FROM FIELD NOTES OF ACTUAL SURVEYS AND BEARS THE ENDORSEMENT OF MY SUPERVISION AND THAT THE SAME ARE TRUE AND CORRECT TO THE BEST OF MY KNOWLEDGE AND BELIEF.

REGISTERED LAND SURVEYOR
STATE OF COLORADO
No. 17289

Revised: 06-27-06 D.R.B.

UTAH ENGINEERING & HARD SURVEYING
85 SOUTH 200 EAST - VERNAL, UTAH 84078
(435) 789-1017

SCALE 1" = 1000'	DATE SURVEYED: 06-22-05	DATE DRAWN: 08-12-05
PARTY G.O. B.H. D.R.B.	REFERENCES G.L.O. PLAT	
WEATHER WARM	FILE	
		BERRY PETROLEUM COMPANY

EnCana Oil & Gas (USA) INC.

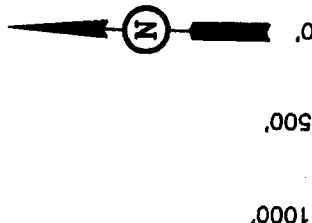
Well location, N. PARACHUTE EF10D J15 595, located as shown in the NW 1/4 SE 1/4 of Section 15, T5S, R95W, 6th P.M., Garfield County, Colorado.

BASIS OF ELEVATION

SPOT ELEVATION AT THE NORTHWEST CORNER OF SECTION 30, T5S, R95W, 6th P.M. TAKEN FROM THE FORKED GULCH QUADRANGLE, COLORADO, GARFIELD COUNTY, 7.5 MINUTE SERIES (TOPOGRAPHICAL MAP) PUBLISHED BY THE UNITED STATES DEPARTMENT OF THE INTERIOR, GEOLOGICAL SURVEY. SAID ELEVATION IS MARKED AS BEING 5966 FEET.

BASIS OF BEARINGS

BASIS OF BEARINGS IS A G.P.S. OBSERVATION.



SCALE

CERTIFICATE I. KAY
THIS IS TO CERTIFY THAT THE SURVEYING WAS PREPARED FROM FIELD NOTES OF ACTUAL MEASUREMENTS MADE BY ME OR UNDER MY SUPERVISION AND THAT THE SAME ARE TRUE AND CORRECT TO THE BEST OF MY KNOWLEDGE AND BELIEF.
REGISTERED LAND SURVEYOR
STATE OF COLORADO

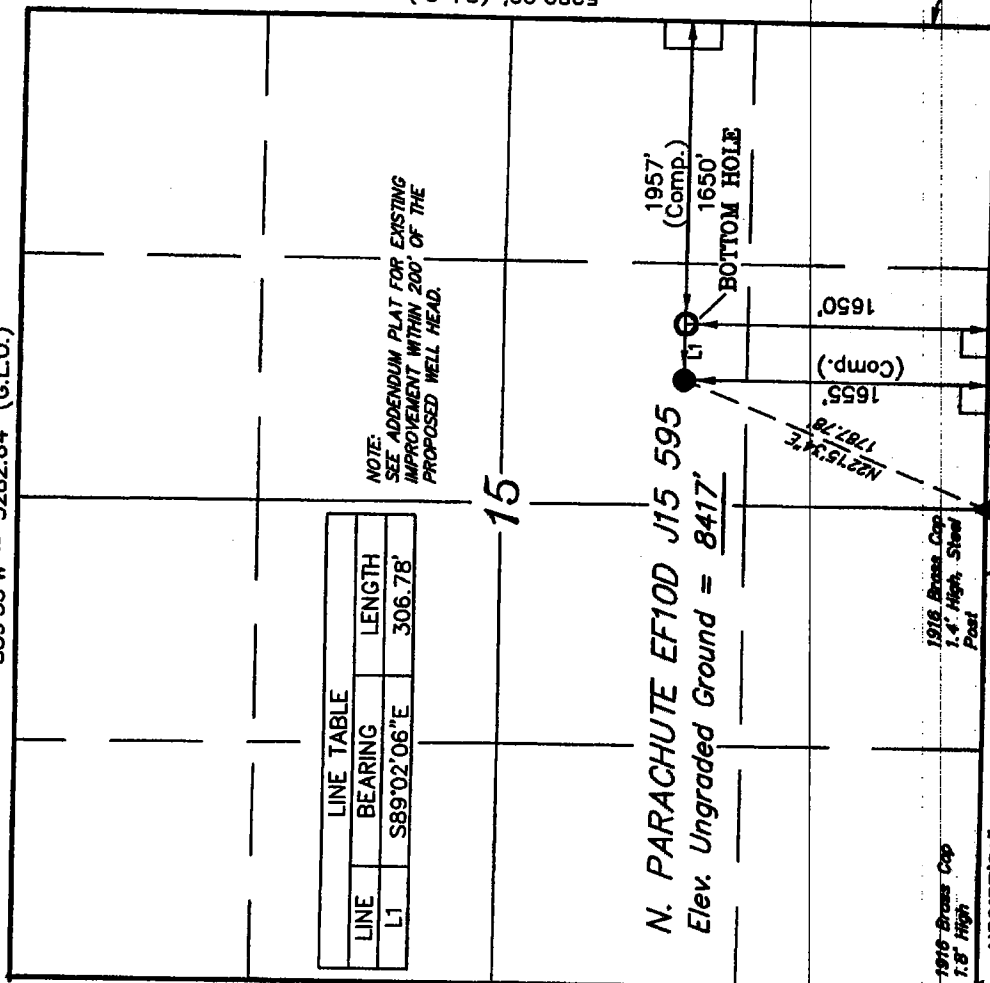
Revised: 08-18-05 D.R.B.

UTAH ENGINEERING & LAND SURVEYING
85 SOUTH 200 EAST - VERNAL, UTAH 84078
(435) 789-1017

SCALE 1" = 1000'	DATE SURVEYED: 06-22-05	DATE DRAWN: 08-12-05
PARTY G.O. B.H. D.R.B.	REFERENCES G.L.O. PLAT	
WEATHER WARM	FILE	
EnCana Oil & Gas (USA) INC.		

T5S, R95W, 6th P.M.

S89°55'W - 5282.64' (G.L.O.)



N00°02'W - 5280.00' (G.L.O.)

LINE	BEARING	LENGTH
L1	S89°02'06"E	306.78'

NOTE:
SEE ADDENDUM PLAT FOR EXISTING
IMPROVEMENT WITHIN 200' OF THE
PROPOSED WELL HEAD.

N. PARACHUTE EF10D J15 595
Elev. Ungraded Ground = 8417'

1957'
(Comp.)

1650'
BOTTOM HOLE

1650'
(Comp.)

1650'

1916 Brass Cap
1.8" High
N89°57'51"W - 2625.89' (Meas.)

18000' (G.L.O.)

2633.40' (G.L.O.)

2700' (G.L.O.)

(NAD 83)
LATITUDE = 39°36'40.01" (39.611114)
LONGITUDE = 108°02'17.66" (108.038239)

(NAD 27)
LATITUDE = 39°36'40.09" (39.611136)
LONGITUDE = 108°02'15.39" (108.037608)

LEGEND:

— = 90° SYMBOL

● = PROPOSED WELL HEAD.

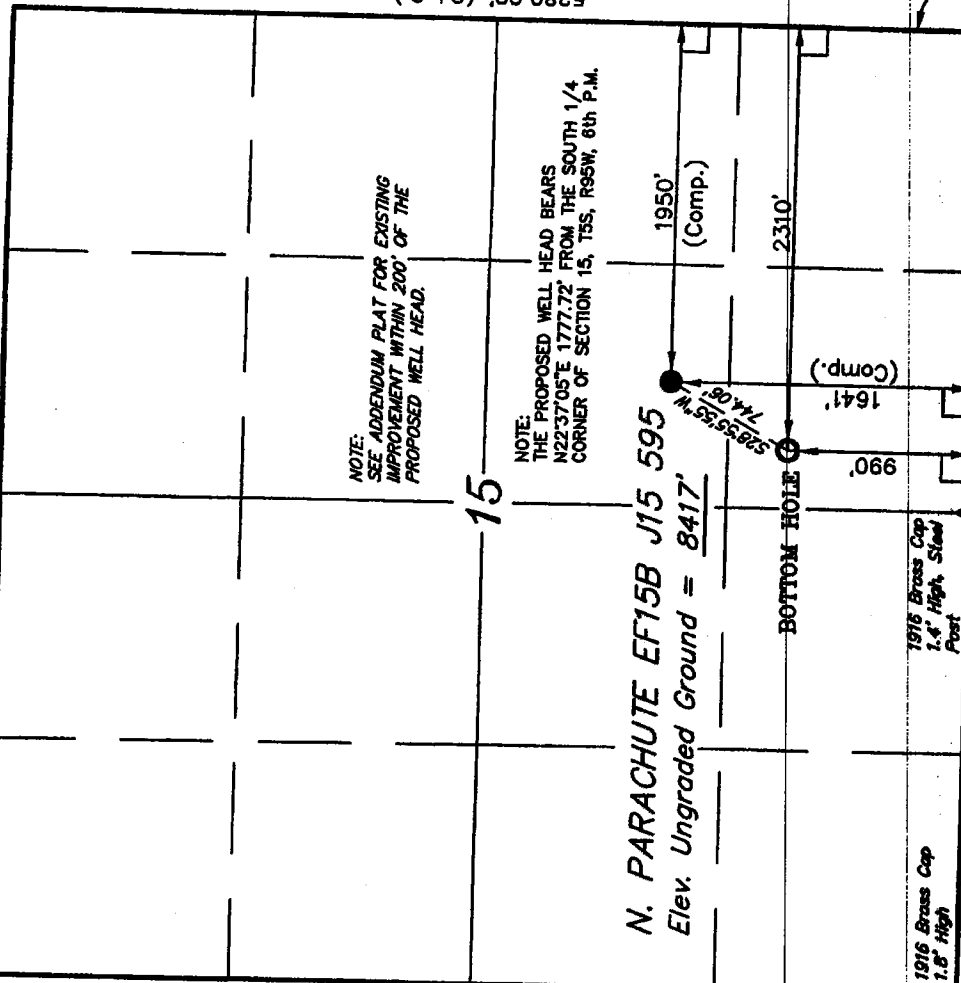
▲ = SECTION CORNERS LOCATED.

T5S, R95W, 6th P.M.

EnCana Oil & Gas (USA) INC.

Well location, N. PARACHUTE EF15B J15 595, located as shown in the NW 1/4 SE 1/4 of Section 15, T5S, R95W, 6th P.M., Garfield County, Colorado.

S89°55'W - 5282.64' (G.L.O.)



N00°02'W - 5280.00' (G.L.O.)

NOTE:
SEE APPENDIX PLAT FOR EXISTING
IMPROVEMENT WITHIN 200' OF THE
PROPOSED WELL HEAD.

NOTE:
THE PROPOSED WELL HEAD BEARS
N22°37'05"E 1777.72' FROM THE SOUTH 1/4
CORNER OF SECTION 15, T5S, R95W, 6th P.M.

N. PARACHUTE EF15B J15 595
Elev. Ungraded Ground = 8417'

BOTTOM HOLE

1916 Brass Cap
1.8' High

1916 Brass Cap
1.4' High, Steel
Post

N89°57'51'W - 2625.89' (Meas.)

180°00' (G.L.O.)

2633.40' (G.L.O.)

2700' (G.L.O.)

(NAD 83)
LATITUDE = 39°36'39.88" (39.611078)
LONGITUDE = 108°02'17.58" (108.038217)

(NAD 27)
LATITUDE = 39°36'39.96" (39.611100)
LONGITUDE = 108°02'15.31" (108.037586)

LEGEND:

— = 90° SYMBOL

● = PROPOSED WELL HEAD.

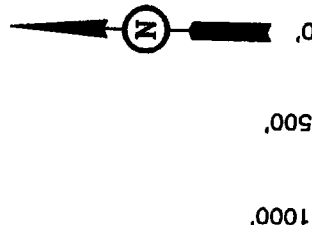
▲ = SECTION CORNERS LOCATED.

BASIS OF ELEVATION

SPOT ELEVATION AT THE NORTHWEST CORNER OF SECTION 30, T5S, R95W, 6th P.M. TAKEN FROM THE FORKED GULCH QUADRANGLE, COLORADO, GARFIELD COUNTY, 7.5 MINUTE SERIES (TOPOGRAPHICAL MAP) PUBLISHED BY THE UNITED STATES DEPARTMENT OF THE INTERIOR, GEOLOGICAL SURVEY. SAID ELEVATION IS MARKED AS BEING 5966 FEET.

BASIS OF BEARINGS

BASIS OF BEARINGS IS A G.P.S. OBSERVATION.



SCALE

CERTIFICATE: L. KAY
THIS IS TO CERTIFY THAT THE ABOVE MAP WAS PREPARED FROM FIELD NOTES OF ACTUAL SURVEYS MADE BY ME OR UNDER MY SUPERVISION AND THAT THE SAME ARE TRUE AND CORRECT TO THE BEST OF MY KNOWLEDGE AND BELIEF.

REGISTERED LAND SURVEYOR
STATE OF UTAH NO. 17140
JAN 17 1992

Revised: 08-18-05 D.R.B.

UTAH ENGINEERING & LAND SURVEYING 85 SOUTH 200 EAST - VERNAL, UTAH 84078 (435) 789-1017			
SCALE 1" = 1000'	DATE SURVEYED: 06-22-05	DATE DRAWN: 08-12-05	
PARTY G.O. B.H. D.R.B.	REFERENCES G.L.O. PLAT		
WEATHER WARM	FILE		
EnCana Oil & Gas (USA) INC.			

S89°55'W - 5282.64' (G.L.O.)

T5S, R95W, 6th P.M.

(NAD 83)
LATITUDE = 39°36'39.75" (39.611042)
LONGITUDE = 108°02'17.50" (108.038194)
(NAD 27)
LATITUDE = 39°36'39.83" (39.611064)
LONGITUDE = 108°02'15.23" (108.037564)

15

N. PARACHUTE EF02B J15 595
Elev. Ungraded Ground = 8417'

1944'
(Comp.)

1628' (Comp.)

NOTE:
SEE ADDENDUM PLAT FOR EXISTING
IMPROVEMENT WITHIN 200' OF THE
PROPOSED WELL HEAD.

1916 Brass Cap
1.8' High

1916 Brass Cap
1.4' High, Steel
Post

N89°57'51"W - 2625.89' (Meas.)

180°00' (G.L.O.)
BOTTOM HOLE

2633.40' (G.L.O.)

2310'

90°01' (G.L.O.)

89°59' (G.L.O.)

N00°02'W - 5280.00' (G.L.O.)

5280.00' - (G.L.O.)

EnCana Oil & Gas (USA) INC.

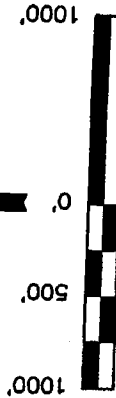
Well location, N. PARACHUTE EF02B J15 595, located as shown in the NW 1/4 SE 1/4 of Section 15, T5S, R95W, 6th P.M., Garfield County, Colorado.

BASIS OF ELEVATION

SPOT ELEVATION AT THE NORTHWEST CORNER OF SECTION 30, T5S, R95W, 6th P.M. TAKEN FROM THE FORKED GULCH QUADRANGLE, COLORADO, GARFIELD COUNTY, 7.5 MINUTE SERIES (TOPOGRAPHICAL MAP) PUBLISHED BY THE UNITED STATES DEPARTMENT OF THE INTERIOR, GEOLOGICAL SURVEY. SAID ELEVATION IS MARKED AS BEING 5966 FEET.

BASIS OF BEARINGS

BASIS OF BEARINGS IS A G.P.S. OBSERVATION.



SCALE

CERTIFICATE

THIS IS TO CERTIFY THAT THE PLAT WAS PREPARED FROM FIELD NOTES OF ACTUAL SURVEYING AND UNDER MY SUPERVISION AND THAT THE SAME ARE TRUE AND CORRECT TO THE BEST OF MY KNOWLEDGE AND BELIEF

REGISTERED LAND SURVEYOR

STATE OF COLORADO

Revised: 08-18-05 D.R.B.

UNTAEH ENGINEERING & LAND SURVEYING

85 SOUTH 200 EAST - VERNAL, UTAH 84078

(435) 789-1017

SCALE 1" = 1000'	DATE SURVEYED: 06-22-05	DATE DRAWN: 08-12-05
PARTY G.O. B.H. D.R.B.	REFERENCES G.L.O. PLAT	
WEATHER WARM	FILE	
EnCana Oil & Gas (USA) INC.		

S89°55'W - 5282.64' (G.L.O.)

T5S, R95W, 6th P.M.

(NAD 83)
LATITUDE = 39°36'39.61" (39.611003)
LONGITUDE = 108°02'17.41" (108.038169)
(NAD 27)
LATITUDE = 39°36'39.69" (39.611025)
LONGITUDE = 108°02'15.14" (108.037539)

15

N. PARACHUTE EF02D J15 595
Elev. Ungraded Ground = 8417'

NOTE:
SEE ADDENDUM PLAT FOR EXISTING
IMPROVEMENT WITHIN 200' OF THE
PROPOSED WELL HEAD.

1916 Brass Cap
1.8" High

1916 Brass Cap
1.4" High, Steel
Post

N89°57'51"W - 2625.89' (Meas.)

180°00' (G.L.O.)

N27°30'34"E
1757.71'
1614' (Comp.)
S08°16'48"E 2620.18'

1937'
(Comp.)

2633.40' (G.L.O.)

89°58' (G.L.O.)

90°01' (G.L.O.)

1650'

BOTTOM HOLE

LEGEND:

— = 90° SYMBOL

● = PROPOSED WELL HEAD.

▲ = SECTION CORNERS LOCATED. Sec. 22

EnCana Oil & Gas (USA) INC.

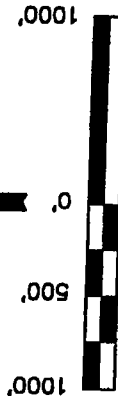
Well location, N. PARACHUTE EF02D J15 595, located as shown in the NW 1/4 SE 1/4 of Section 15, T5S, R95W, 6th P.M., Garfield County, Colorado.

BASIS OF ELEVATION

SPOT ELEVATION AT THE NORTHWEST CORNER OF SECTION 30, T5S, R95W, 6th P.M. TAKEN FROM THE FORKED GULCH QUADRANGLE, COLORADO, GARFIELD COUNTY, 7.5 MINUTE SERIES (TOPOGRAPHICAL MAP) PUBLISHED BY THE UNITED STATES DEPARTMENT OF THE INTERIOR, GEOLOGICAL SURVEY. SAID ELEVATION IS MARKED AS BEING 5966 FEET.

BASIS OF BEARINGS

BASIS OF BEARINGS IS A G.P.S. OBSERVATION.



SCALE

CERTIFICATION

THIS IS TO CERTIFY THAT THE SURVEY WAS CONDUCTED FROM FIELD NOTES OF ACTUAL SURVEYING BEARS OF UNDER MY SUPERVISION AND THAT THE SAME ARE TRUE AND CORRECT TO THE BEST OF MY KNOWLEDGE AND BELIEF.

REGISTERED LAND SURVEYOR
UNIVERSITY OF COLORADO
STATE OF COLORADO

UNTAH ENGINEERING & LAND SURVEYING

85 SOUTH 200 EAST - VERNAL, UTAH 84078
(435) 788-1017

SCALE
1" = 1000'

DATE SURVEYED:
06-22-05

DATE DRAWN:
08-12-05

PARTY

G.O. B.H.

D.R.B.

REFERENCES

G.L.O. PLAT

FILE

WEATHER
WARM

EnCana Oil & Gas (USA) INC.

