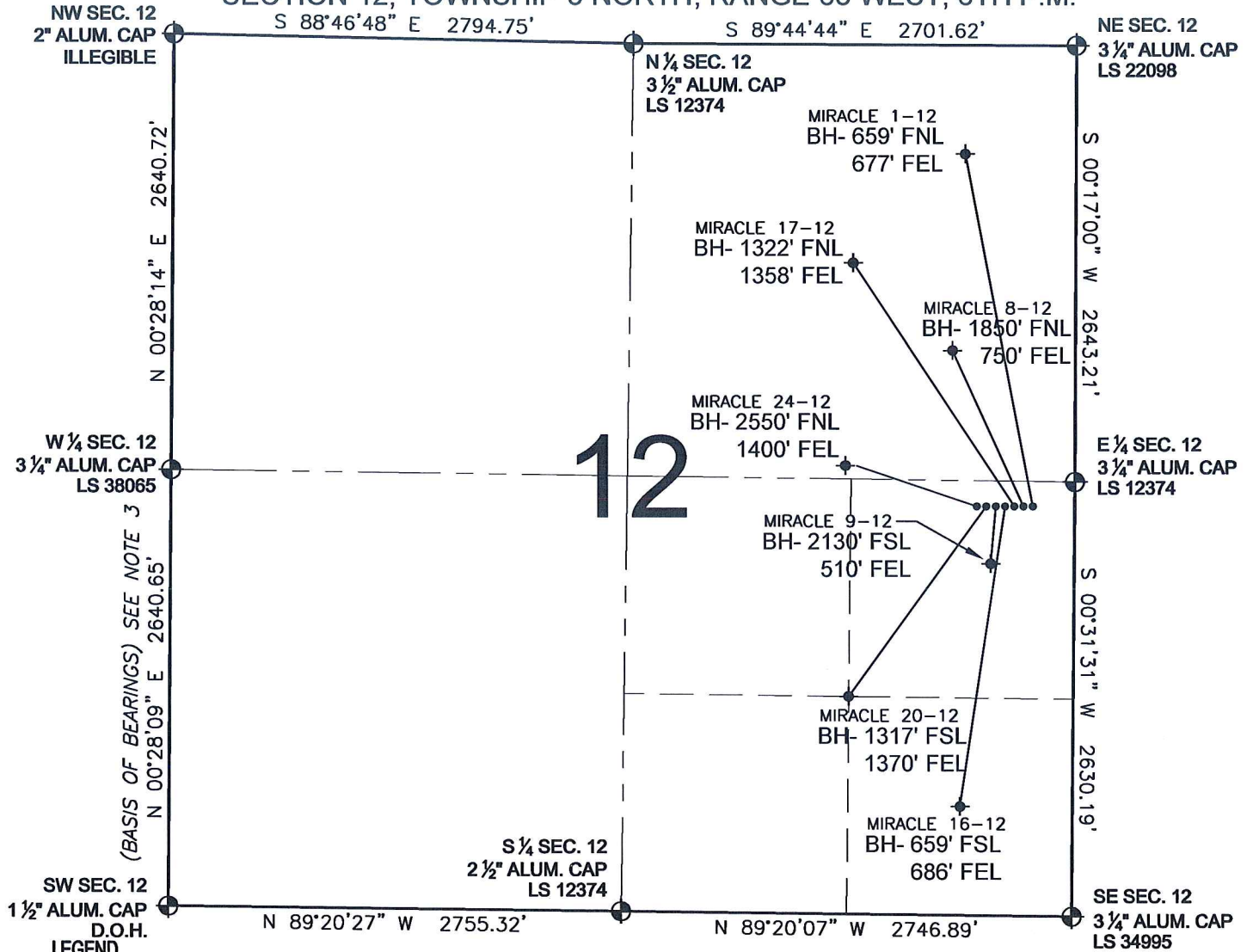


PAD DRAWING - MIRACLE 7 PAD

SECTION 12, TOWNSHIP 5 NORTH, RANGE 68 WEST, 6TH P.M.



LEGEND

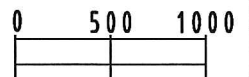
- ⊕ = EXISTING MONUMENT
- ⊙ = PROPOSED WELL
- ⬮ = BOTTOM HOLE
- ⬮ = EXISTING WELL
- BH= BOTTOM HOLE

NOTES:

- THIS SURVEY WAS DONE BY GPS METHODS AND CONFORMS TO THE MINIMUM STANDARDS SET BY THE C.O.G.C.C., RULE NO. 215 (PDOP VALUE IS LESS THAN 6.0, LATITUDE AND LONGITUDE ARE ACCURATE TO 5 DECIMAL PLACES, AND GPS OBSERVATIONS ARE DIFFERENTIAL AND DONE BY QUALIFIED PERSONNEL.)
- ELEVATIONS SHOWN AT THE WELL HEAD, AS WELL AS HORIZONTAL CONTROL, ARE BASED ON GPS-RTK VALUES DERIVED FROM DOING 2-HOUR STATIC GPS SESSIONS AND REDUCTIONS USING O.P.U.S. SOLUTIONS.
VERTICAL = NAVD88; HORIZONTAL = NAD83/92
- THE BEARINGS SHOWN HEREON ARE BASED ON GPS OBSERVATIONS BETWEEN THE MONUMENTS SHOWN HEREON AS FOUND ON THE FIELD DATE BELOW.
- DISTANCES SHOWN ARE AT GROUND LEVEL, AS MEASURED IN THE FIELD, WITH TIES TO WELLS MEASURED AT A PERPENDICULAR TO SECTION LINES.

NOTES:

- MIRACLE 24-12 TO BE AT 2480' FSL, 335' FEL.
- BOTTOM HOLE AT 2550' FNL & 1400' FEL.
- MIRACLE 17-12 TO BE AT 2480' FSL, 295' FEL.
- BOTTOM HOLE AT 1322' FNL & 1358' FEL.
- MIRACLE 8-12 TO BE AT 2480' FSL, 285' FEL.
- BOTTOM HOLE AT 1850' FNL & 750' FEL.
- MIRACLE 1-12 TO BE AT 2480' FSL, 275' FEL.
- BOTTOM HOLE AT 659' FNL & 677' FEL.
- MIRACLE 20-12 TO BE AT 2480' FSL, 325' FEL.
- BOTTOM HOLE AT 1317' FSL & 1370' FEL.
- MIRACLE 9-12 TO BE AT 2480' FSL, 315' FEL.
- BOTTOM HOLE AT 2130' FSL & 510' FEL.
- MIRACLE 16-12 TO BE AT 2480' FSL, 305' FEL.
- BOTTOM HOLE AT 659' FSL & 686' FEL.



SCALE: 1"=1000'

REVISIONS

INITIAL	DATE
SMF	02-11-10
SMF	03-12-10

PREPARED BY:



KERR-MCGEE OIL & GAS ONSHORE LP

FIELD DATE:
01-26-10

DRAWING DATE:
01-27-10

BY:
SMF

PAD NAME:

MIRACLE 7 PAD

SURFACE LOCATION:

LARIMER COUNTY, COLORADO
NE 1/4 SE 1/4, SEC. 12, T5N, R68W