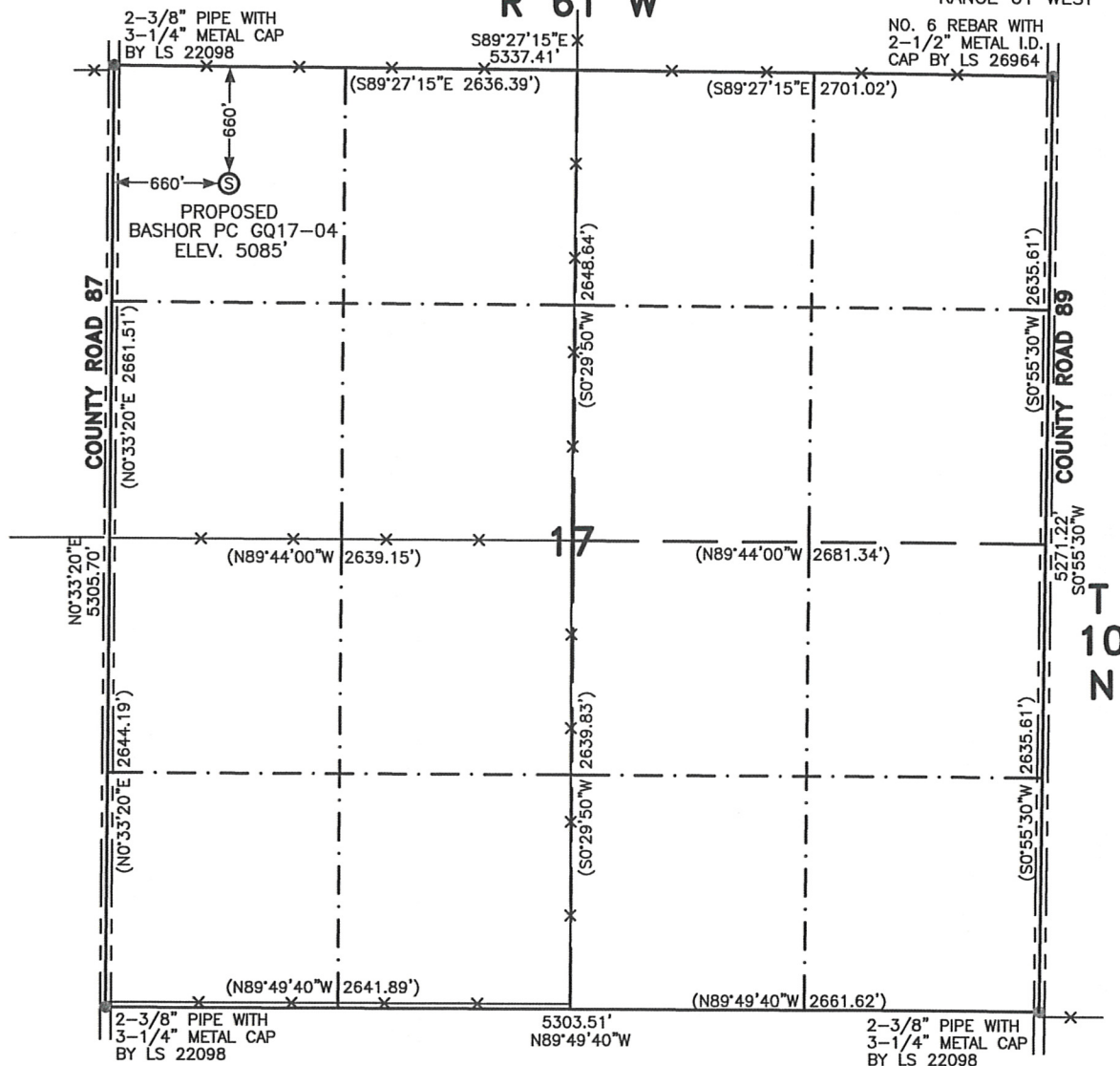


WELL LOCATION CERTIFICATE**THIS MAP DOES NOT REPRESENT A BOUNDARY SURVEY**SECTION 17
TOWNSHIP 10 NORTH
RANGE 61 WEST**R 61 W**

SCALE: 1"=1000'

0 500 1000



SCALE IN FEET

IN ACCORDANCE WITH A REQUEST FROM RYAN ANTONIO - NOBLE ENERGY INC. LEIBERT-McATEE & ASSOCIATES, INC HAS DETERMINED THE LOCATION OF THE BASHOR PC GQ17-04 WELL TO BE 660' FNL AND 660' FWL, AS MEASURED AT NINETY (90) DEGREES FROM THE SECTION LINES OF SECTION 17, TOWNSHIP 10 NORTH, RANGE 61 WEST, 6TH PRINCIPAL MERIDIAN, WELD COUNTY, COLORADO.

I HEREBY CERTIFY THAT THIS WELL LOCATION CERTIFICATE WAS PREPARED BY ME, OR UNDER MY DIRECT SUPERVISION. THAT THE FIELD WORK WAS COMPLETED ON 4/23/2010, FOR AND ON BEHALF OF NOBLE ENERGY INC, THAT IT IS NOT A LAND SURVEY PLAT OR AN IMPROVEMENT SURVEY PLAT, AND THAT IT IS NOT TO BE RELIED UPON FOR ESTABLISHMENT OF FENCE, BUILDING, OR OTHER FUTURE IMPROVEMENT LINES.

NOTES:

- 1) BASIS OF BEARINGS FOR THIS MAP ARE BASED UPON GPS OBSERVATIONS MADE ON 4/23/2010 BETWEEN MONUMENT LOCATED AT THE NORTHWEST SECTION CORNER AND THE NORTHEAST SECTION CORNER OF SAID SECTION AND WITH ALL BEARINGS SHOWN HEREON RELATIVE THERETO.
- 2) ELEVATIONS ARE BASED UPON AA 169 BENCHMARK IN THE NE1/4 OF SECTION 32, T11N, R61W ELEV=5122.96' NGVD29 DATUM.
- 3) SEE VISIBLE IMPROVEMENTS EXHIBIT FOR ALL IMPROVEMENTS WITHIN 600'.
- 4) THE LOCATION FALLS IN PASTURE.

LATITUDE & LONGITUDE (NAD 83):

LATITUDE: N 40.83965

LONGITUDE: W 104.23772

PDOP: 1.8

QUARTER-QUARTER: NW1/4NW1/4

NEAREST PROPERTY LINE: 660' NORTH

LEGEND

⑤ PROPOSED SURFACE LOCATION

== == == ROAD

-x-x- FENCE

CALCULATED DIMENSIONS
ARE IN PARENTHESESGPS OPERATOR: DARREN VEAL
DWG NO. 308-10

NOTICE: According to Colorado law you MUST commence any legal action based upon any defect in the W.L.C. within three years after you first discover such defect. In no event may only action based upon any defect in this W.L.C. be commenced more than ten years from this sold date of the certification shown hereon.



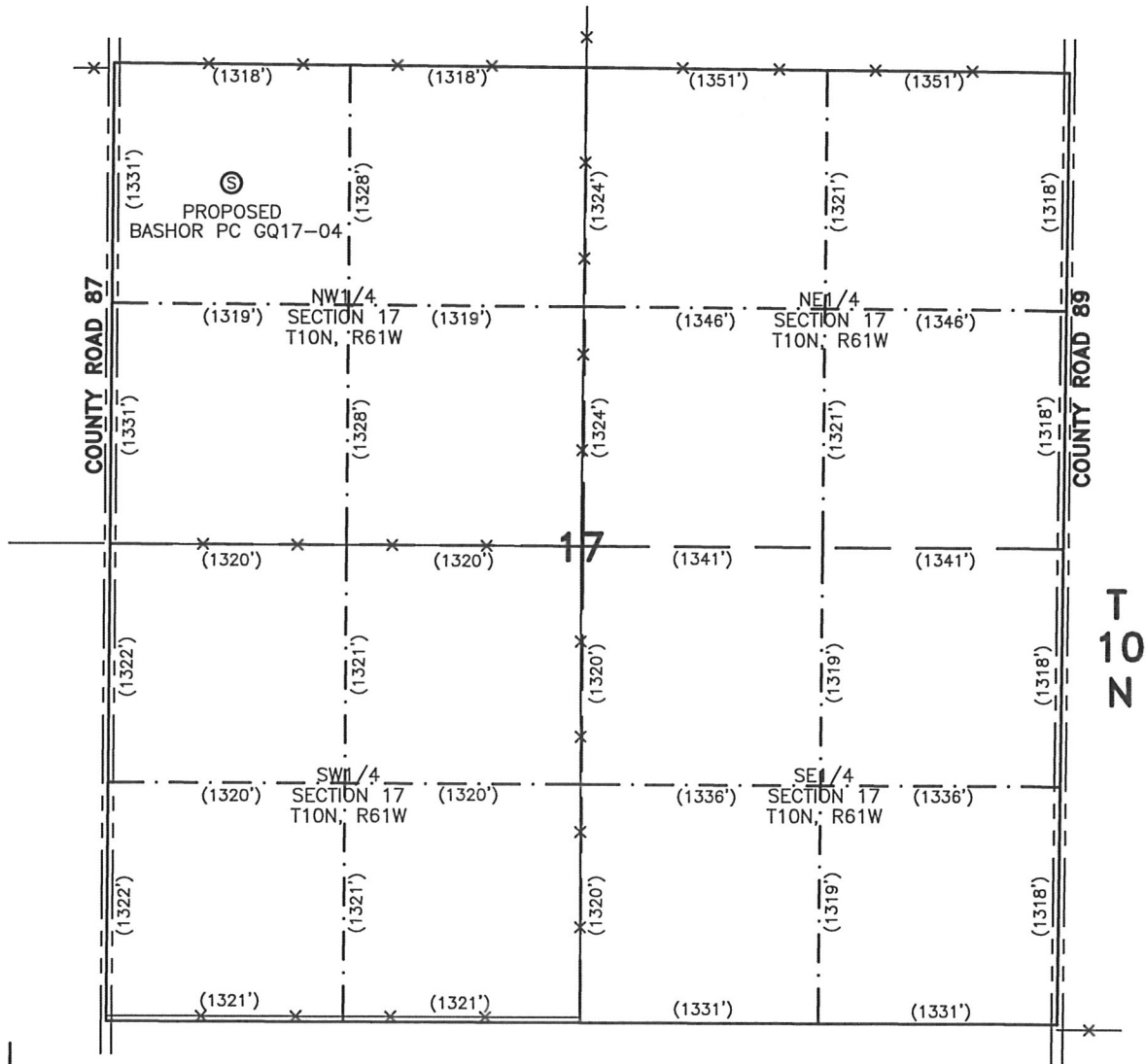
COMPLETED 4-26-10

NICOLE F. HAY
FOR AND ON BEHALF OF
LEIBERT-McATEE & ASSOCIATES, INC
P.L.S. 38044

SITE SKETCH – BASHOR PC GQ17-04

R 61 W

SECTION 17
TOWNSHIP 10 NORTH
RANGE 61 WEST



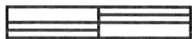
NOTES:

1) THIS SKETCH DOES NOT REPRESENT A BOUNDARY SURVEY.



SCALE: 1"=1000'

0 500 1000



SCALE IN FEET

LEGEND

Ⓢ PROPOSED SURFACE LOCATION

== ROAD

—x— FENCE

CALCULATED DIMENSIONS
ARE IN PARENTHESES