

TABLE 1
SOIL SAMPLE ANALYTICAL RESULTS
LECLERG 31-22 (API No. 05-123-20341)
WELD COUNTY
PETROLEUM DEVELOPMENT CORPORATION

Sample ID	Depth (ft bgs)	Date Sampled	Benzene (mg/kg)	Toluene (mg/kg)	Ethyl- benzene (mg/kg)	Xylenes (mg/kg)	TPH (mg/kg)
B01	4	09/10/2008	NA	NA	NA	NA	<100
E01	4	09/11/2008	NA	NA	NA	NA	<100
N01	2	09/10/2008	NA	NA	NA	NA	<100
N02	4	09/11/2008	NA	NA	NA	NA	<100
S01	2	09/10/2008	NA	NA	NA	NA	<100
S02	4	09/11/2008	NA	NA	NA	NA	<100
W01	4	09/11/2008	NA	NA	NA	NA	<100
COGCC Sensitive Area Standard			NS	NS	NS	NS	1000

Notes: < - less than stated laboratory reporting limit
TPH - Total Petroleum Hydrocarbons (C6-C28)

API - American Petroleum Institute

Bold numbers indicate result equalled or exceeded standard.

COGCC Sensitive Area Standard is taken from COGCC Table 910-1, prior to April 1, 2009.

NA - Not Analyzed

NS - No Standard

mg/kg - milligrams per kilogram

ft bgs - feet below ground surface

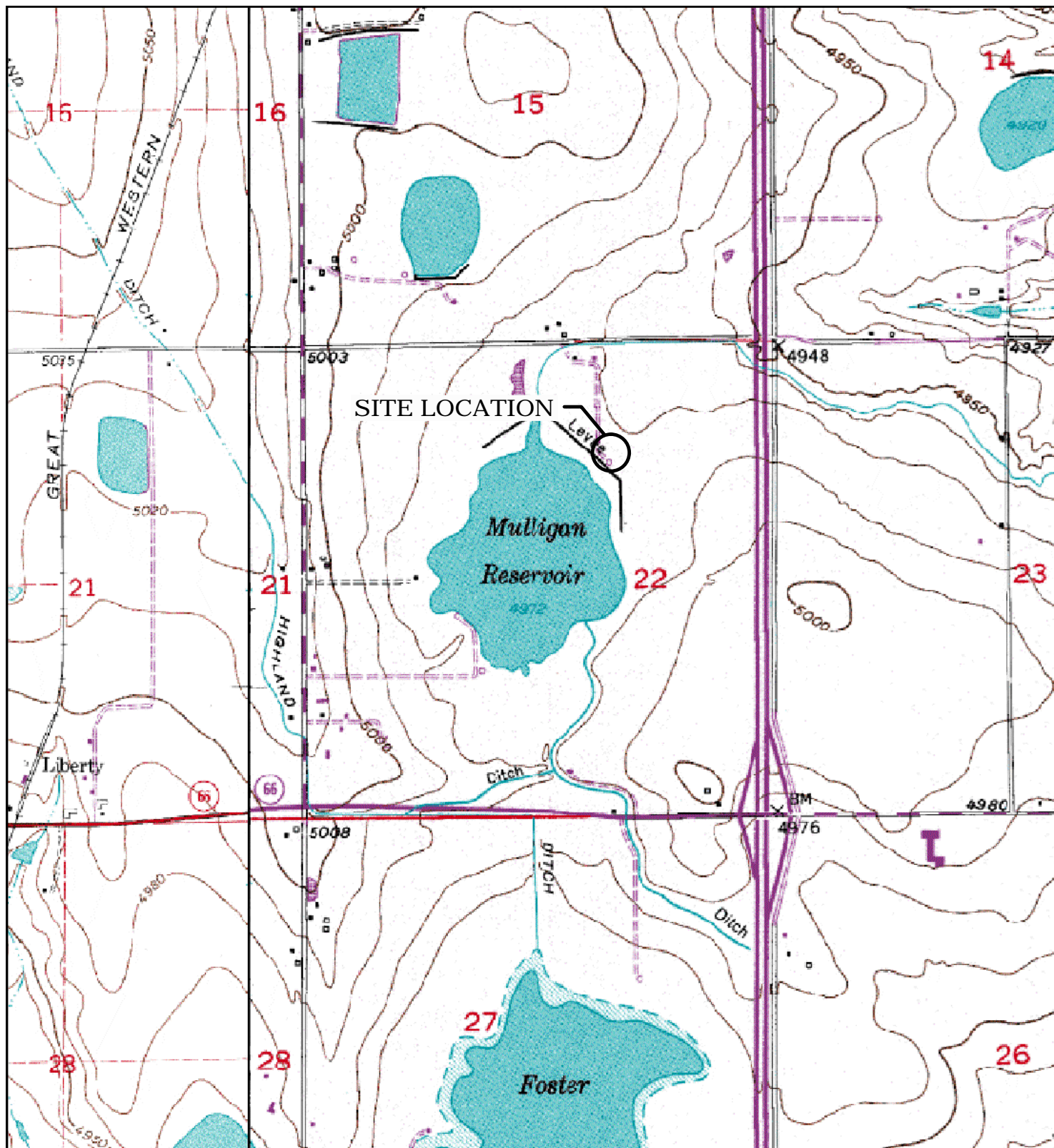


TABLE 2
GROUNDWATER ANALYTICAL AND FIELD PARAMETERS
LECLERG 31-22 (API No. 123-20341)
WELD COUNTY
PETROLEUM DEVELOPMENT CORPORATION

Sample ID	Date Sampled	Benzene (ug/L)	Toluene (ug/L)	Ethyl-benzene (ug/L)	Xylenes (ug/L)	Depth to Water (ft btoc)
GW01	09/11/2008	580	810	140	1200	NM
MW04	03/04/2009	<1.0	<1.0	<1.0	<1.0	4.86
	06/18/2009	<1.0	<1.0	<1.0	<1.0	4.14
	09/24/2009	<1.0	<1.0	<1.0	<1.0	6.45
	12/08/2009	<1.0	<1.0	<1.0	<1.0	4.81
MW05	03/04/2009	<1.0	<1.0	<1.0	<1.0	4.02
MW05R	07/24/2009	<1.0	<1.0	<1.0	<1.0	NM
	09/24/2009	<1.0	<1.0	<1.0	<1.0	4.25
	12/08/2009	<1.0	<1.0	<1.0	<1.0	2.87
MW06	03/04/2009	<1.0	<1.0	<1.0	<1.0	4.67
	06/18/2009	<1.0	<1.0	<1.0	<1.0	3.81
	09/24/2009	<1.0	<1.0	<1.0	<1.0	6.23
	12/08/2009	<1.0	<1.0	<1.0	<1.0	4.98
Basic Standards for Groundwater:		5	560	700	1400	

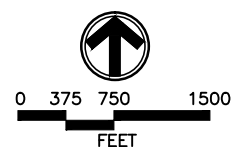
Notes: < - less than ug/L - micrograms per Liter NA - Not Analyzed/Not Available
ft btoc - feet below top of casing NM - Not measured API - American Petroleum Institute
Basic Standards for Groundwater are taken from the Colorado Department of Health and Environment -
Water Quality Control Commission Regulation 41, effective 4/1/2009.
Bold numbers indicate result equaled or exceeded standard.





LEGEND

○ SITE LOCATION



SOURCE: TOPOZONE.COM
USGS 7.5" QUADRANGLE
(NAD27)

FIGURE 1
SITE LOCATION MAP
LECLERG 31-22
NWNE 22 3N 68W
WELD COUNTY, CO
PETROLEUM DEVELOPMENT CORPORATION



PDC0816201_SL 9/08

