

WELL LOCATION CERTIFICATE

NW CRN SEC. 20
2.5"AC LS 34985

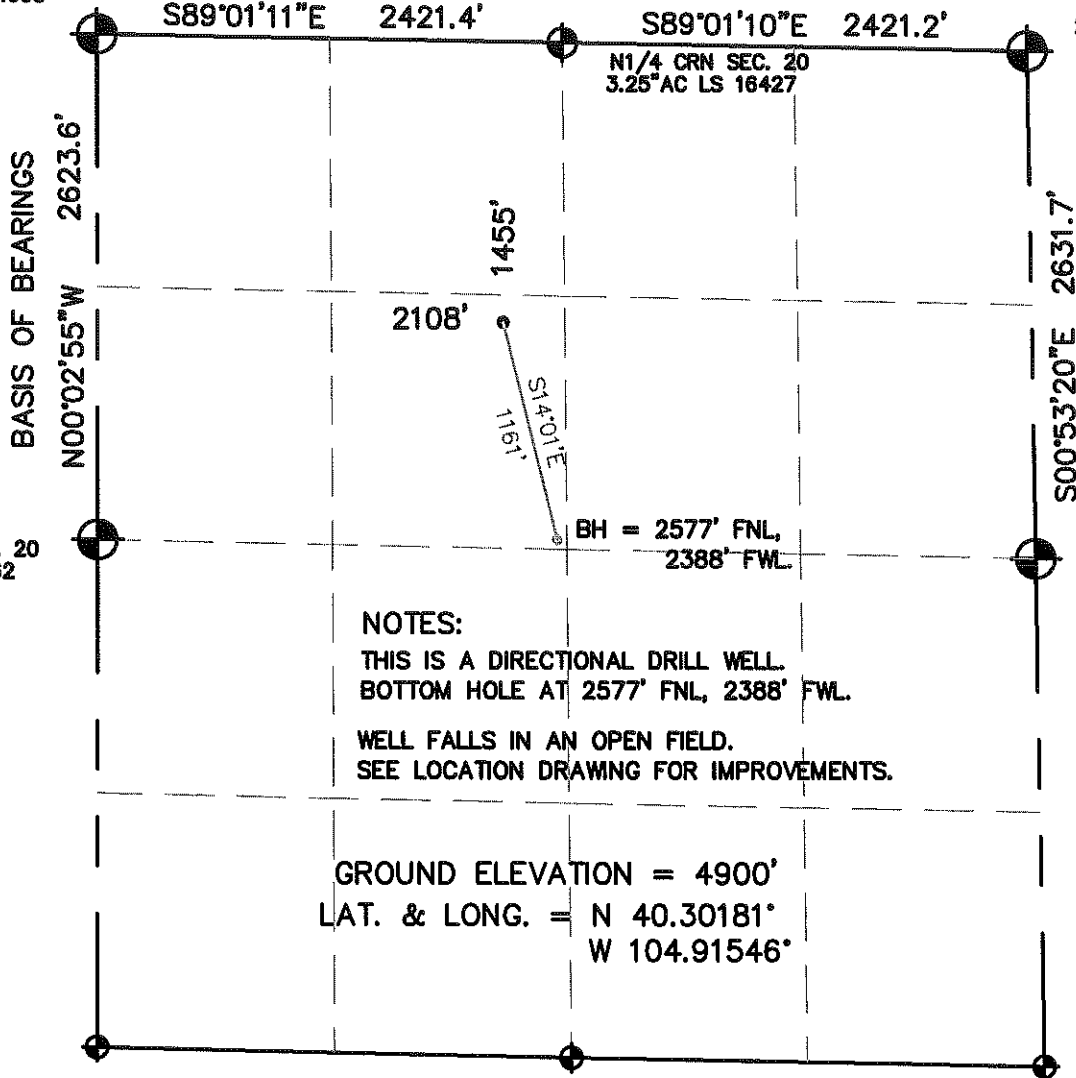
SECTION 20, TOWNSHIP 4 NORTH, RANGE 67 WEST, 6TH P.M.

NE CRN SEC 20
2.5"AC LS 23513

N1/4 CRN SEC. 20
3.25"AC LS 16427

W1/4 CRN SEC. 20
2.5"AC LS 30462

E1/4 CRN SEC. 20
2.5"AC LS 30462



NOTES:

THIS IS A DIRECTIONAL DRILL WELL.
BOTTOM HOLE AT 2577' FNL, 2388' FWL.

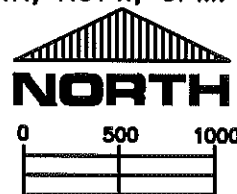
WELL FALLS IN AN OPEN FIELD.
SEE LOCATION DRAWING FOR IMPROVEMENTS.

GROUND ELEVATION = 4900'
LAT. & LONG. = N 40.30181°
W 104.91546°

I HEREBY STATE TO PETROLEUM DEV. CORP. THAT THIS WELL LOCATION CERTIFICATE
FOR THE WELL BROWN 200D IS LOCATED 1455' FNL & 2108' FWL, SEC. 20, T4N, R67W, 6PM.

LEGEND

- = FOUND MONUMENT
- = PROPOSED WELL
- = IMPROVEMENTS (AS LABELED)



SCALE 1" = 1000'

ELEVATION SOURCE = USGS 7.5' QUAD.MAP CONTOURS
NGVD 1929 DATUM.

LAT. & LONG. ARE DIFFERENTIALLY CORRECTED (NAD'83)
USING (DGPS) WITH (PDOP) VALUES LESS THAN SIX (6).

SHOWN DISTANCES ARE FIELD MEASURED - EXTERIOR SECTION LINES
ARE DRAWN TO SCALE (BEST APPROX. OR FOUND MONUMENT).

THOMAS G. CARLSON, PLS 24657
HORSESHOE SURVEYING, LLC

THIS IS NOT A MONUMENTED BOUNDARY SURVEY, IT IS ONLY A
DRAWING INTENDED TO DEPICT THE WELL LOCATION TO SECTION LINES.

DISTANCES TO WELL SHOWN PERPENDICULAR
TO SECTION LINES.

PREPARED BY: HORSESHOE SURVEYING, LLC PO BOX 150458 LAKEWOOD, CO 80215 (720)872-0196		WELL NAME: BROWN 200D	
DRAWING DATE: 12-21-09		LOCATION: WELD COUNTY, CO NW1/4, SEC. 20, T4N, R67W, 6TH P.M.	
FIELD DATE: 12-21-09	BY: TGC	CHKD:	JOB NO. SHEET NO. 1 OF 1