

Map Unit Description

Weld County, Colorado, Southern Part

3 Aquolls and Aquents, gravelly substratum

Setting

Elevation: 4000 to 7200 feet
Mean annual precipitation: 12 to 18 inches
Mean annual air temperature: 45 to 55 degrees F
Frost-free period: 80 to 155 days

Composition

Aquolls and similar soils: 55 percent
Aquents, gravelly substratum, and similar soils: 30 percent

Description of Aquolls

Setting

Landform: Swales, streams, flood plains
Down-slope shape: Linear
Across-slope shape: Linear
Parent material: Recent alluvium

Properties and Qualities

Slope: 0 to 3 percent
Drainage class: Poorly drained
Capacity of the most limiting layer to transmit water (Ksat): Moderately high or high (0.20 to 2.00 in/hr)
Depth to water table: About 6 to 48 inches
Frequency of flooding: Frequent
Frequency of ponding: None
Calcium carbonate maximum: 0 percent
Gypsum maximum: 0 percent
Available water capacity: Moderate (about 8.0 inches)

Interpretive Groups

Land capability (non irrigated): 6w
Ecological site: Salt Meadow (R067BY035CO)

Typical Profile

0 to 48 inches: loam
48 to 60 inches: gravelly sand

Description of Aquents, gravelly substratum

Setting

Landform: Stream terraces
Down-slope shape: Linear
Across-slope shape: Linear
Parent material: Recent alluvium

Properties and Qualities

Slope: 0 to 3 percent
Drainage class: Poorly drained
Capacity of the most limiting layer to transmit water (Ksat): Moderately high or very high (0.57 to 19.98 in/hr)
Depth to water table: About 6 to 24 inches
Frequency of flooding: Frequent
Frequency of ponding: None
Calcium carbonate maximum: 10 percent
Gypsum maximum: 0 percent
Available water capacity: Moderate (about 6.6 inches)

Interpretive Groups

Land capability classification (irrigated): 6w
Land capability (non irrigated): 6w
Ecological site: Salt Meadow (R067BY035CO)

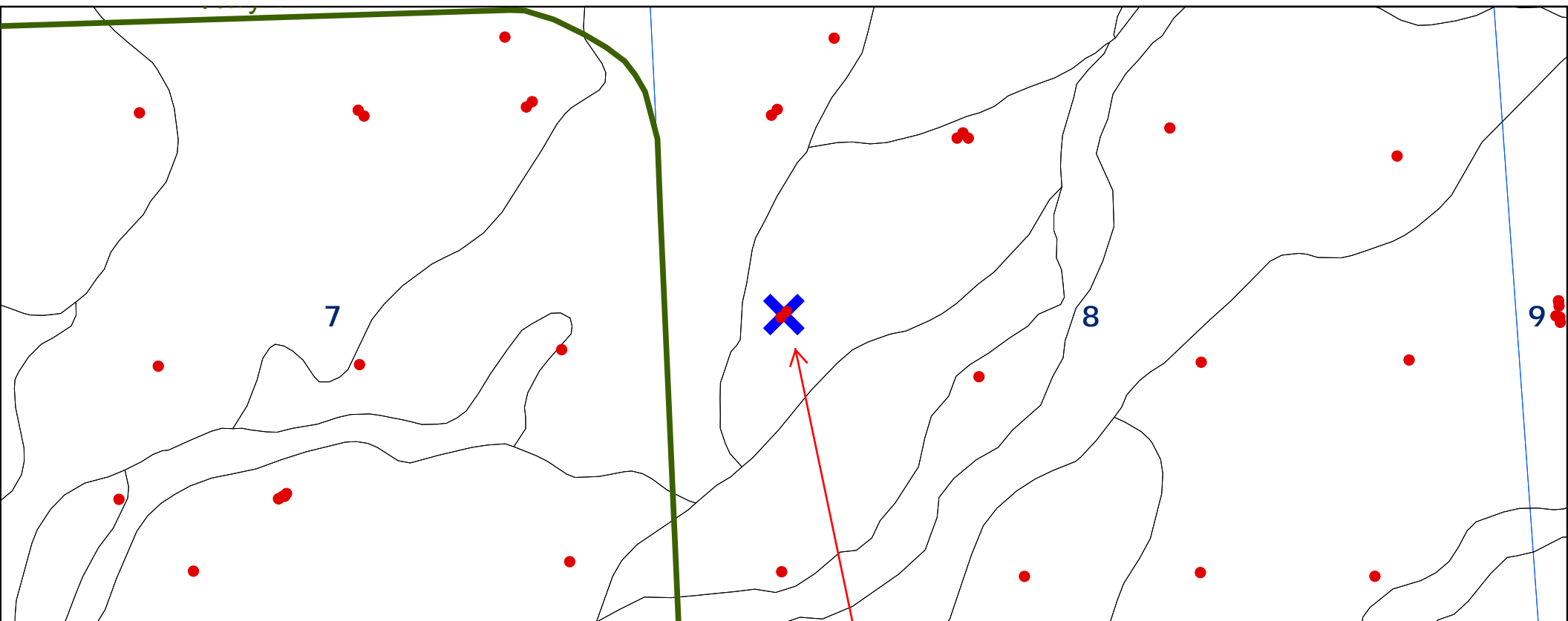
Typical Profile

0 to 48 inches: variable
48 to 60 inches: very gravelly sand

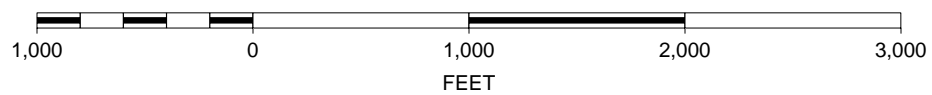
Map Unit Description

Weld County, Colorado, Southern Part

Aquolls and Aquents, gravelly substratum



SCALE 1 : 10,683



K. P. Kauffman Company, Inc.

RML #12-8-19

NWSW Section 8-T4N-R66W

Weld Co., Colorado

