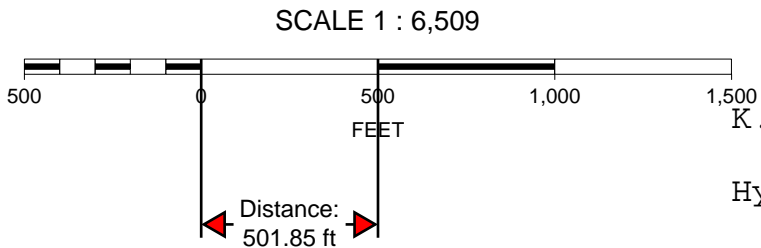
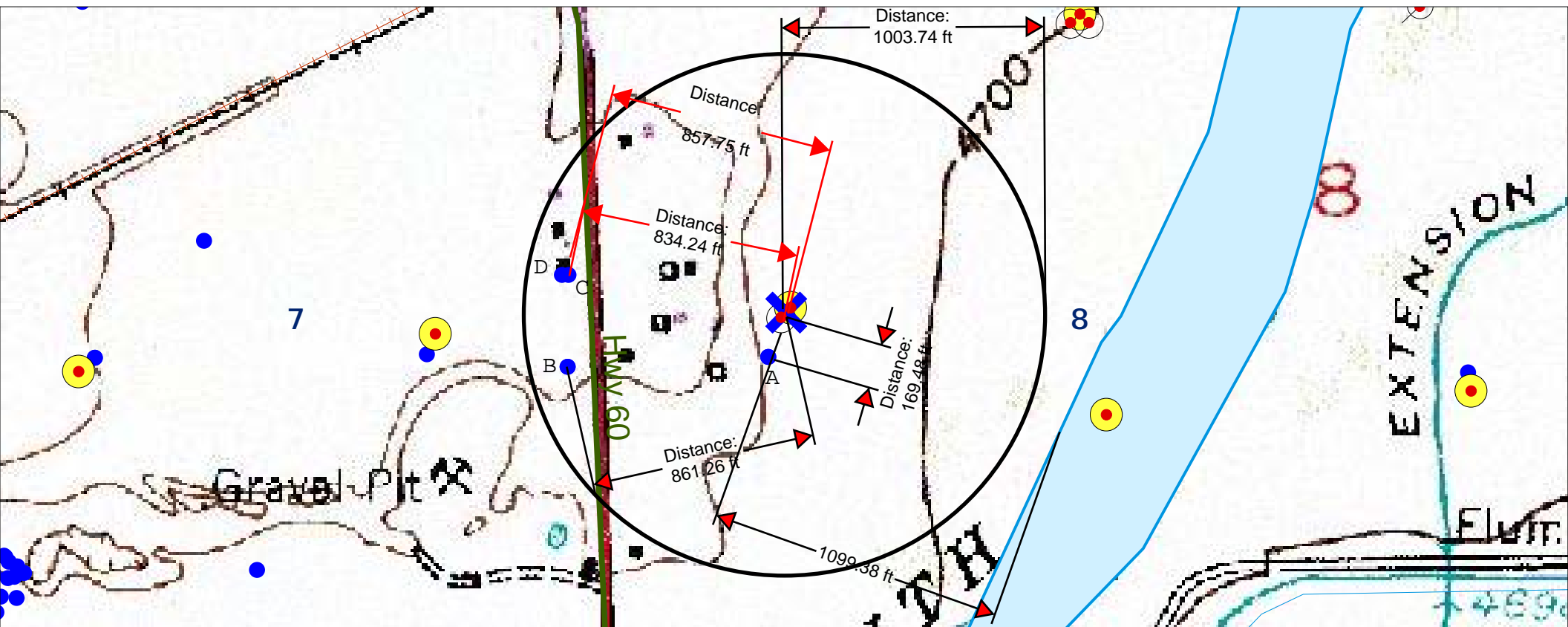


Water wells within 1000' radius: irrigation well A bearing S 169.48'; domestic well B bearing WSW 861.26'; domestic well C bearing W 834.24'; domestic well D bearing W 857.75'; South Platte River bearing SE at 1099.38'



K. P. Kauffman Company, Inc.

Hydrology map, including surface waters and water wells

RML #12-8-19

NWSW section 8-T4N-R66W

Weld Co., Colorado