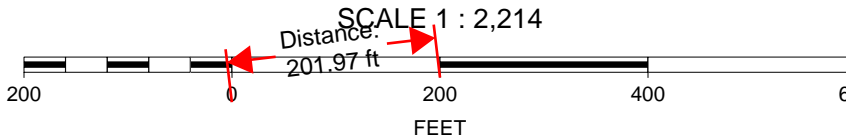
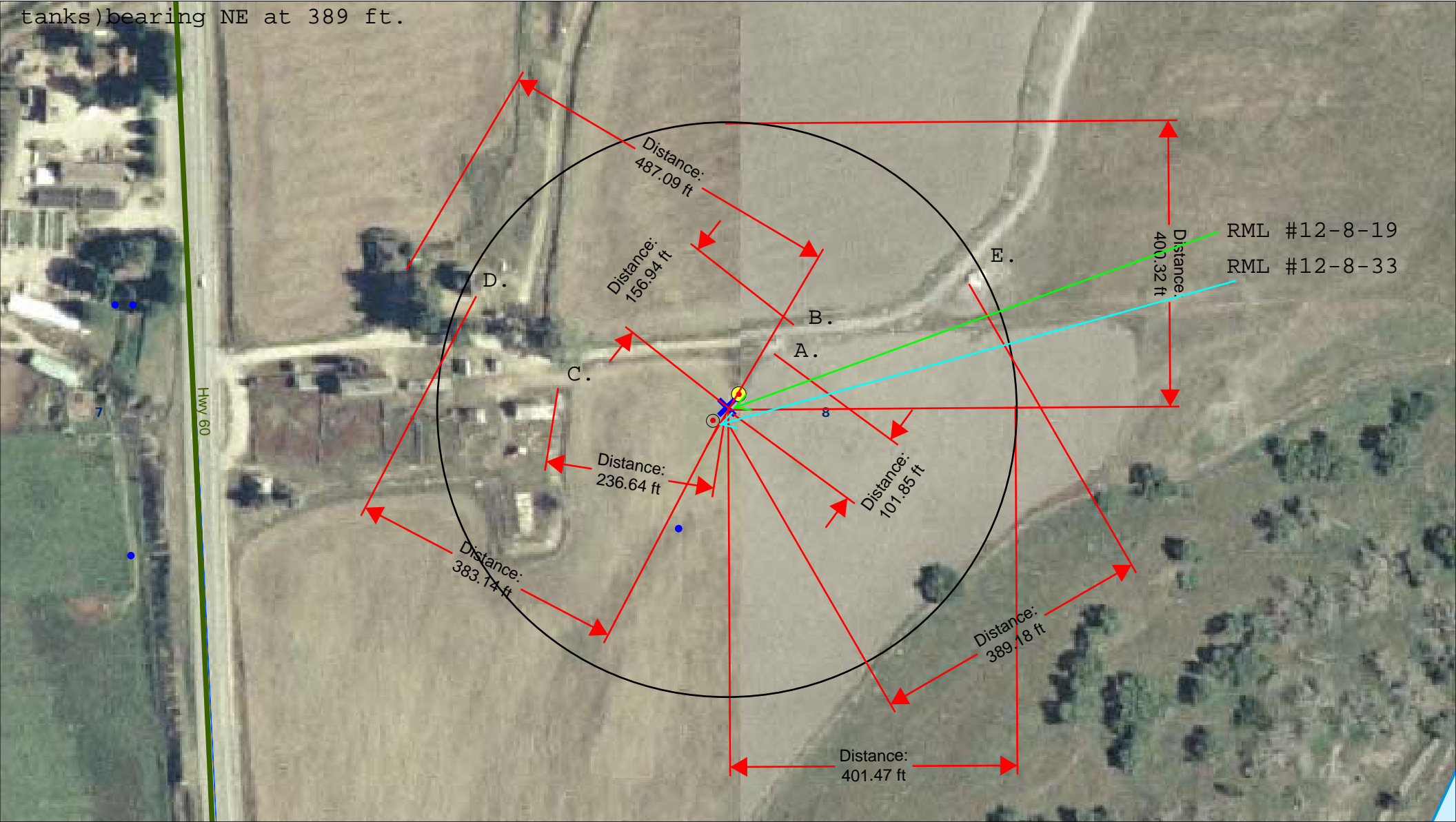


Visible improvements: A. separator bearing NE at 102 ft.; B. water tank bearing NE at 157 ft.; C. farm outbuilding bearing W at 237 ft.; D. house bearing NW at 383 ft.; E. tank battery (oil tanks)bearing NE at 389 ft.



K. P. Kauffman Company, Inc.  
Well location map; visible improvements in 400'  
Edkam #3-28(API 05-123-11889)-RML #12-8 well pad  
(#12-8-19, #12-8-33 wells)  
NWSW section 8-T4N-R66W  
Weld Co., Colorado

