

WILLIAMS PRODUCTION RMT COMPANY

Well location, PUCKETT GM 34-31, located as shown in the NW 1/4 SE 1/4 of Section 31, T6S, R96W, 6th P.M., Garfield County, Colorado.

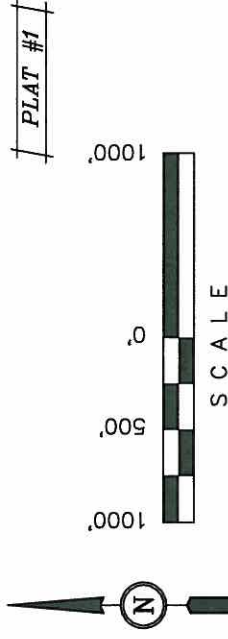
T6S, R96W, 6th P.M.

BASIS OF ELEVATION

SPOT ELEVATION AT THE NORTHWEST CORNER OF SECTION 30, T5S, R95W, 6th P.M. TAKEN FROM THE FORKED GULCH QUADRANGLE, COLORADO, GARFIELD COUNTY, 7.5 MINUTE SERIES (TOPOGRAPHICAL MAP) PUBLISHED BY THE UNITED STATES DEPARTMENT OF THE INTERIOR, GEOLOGICAL SURVEY. SAID ELEVATION IS MARKED AS BEING 5966 FEET.

BASIS OF BEARINGS

BASIS OF BEARINGS IS A G.P.S. OBSERVATION.



CERTIFICATE

THIS IS TO CERTIFY THAT THE ABOVE PLAT WAS PREPARED AND LOCATION AS SHOWN WAS STAKED ON THE GROUND FROM FIELD NOTES OF ACTUAL SURVEYS MADE BY ME OR UNDER MY SUPERVISION AND THAT THE SAME ARE TRUE AND CORRECT TO THE BEST OF MY KNOWLEDGE AND BELIEF.

REGISTERED LAND SURVEYOR
REGISTRATION NO. 17492
STATE OF COLORADO

1912 Brass Cap
11" High
Lat: 39.473206
Long: 108.132189

UNTAH ENGINEERING & LAND SURVEYING

85 SOUTH 200 EAST - VERNAL, UTAH 84078
(435) 789-1017

SCALE 1" = 1000'	DATE SURVEYED: 12-02-09	DATE DRAWN: 02-08-10
PARTY B.B. B.J.	REFERENCES G.L.O. PLAT	
WEATHER COOL	FILE	
		WILLIAMS PRODUCTION RMT COMPANY

1912 Brass Cap
1.0" High
Lat: 39.487700
Long: 108.141758

1912 Brass Cap
1.5" High
Cap: 1.4" High
Lat: 39.486767
Long: 108.141744

WC 1912 Brass
Cap, 1.4" High
Lat: 39.473161
Long: 108.150919

WC 1920 Brass
Cap, 2.8" High
Lat: 39.481825
Long: 108.161617

1923 Brass Cap,
Pile of Stone
Lat: 39.463817
Long: 108.227472

CC 1912 Brass
Cap, 1.0" High,
Pile of Stone
Lat: 39.473153
Long: 108.159211

1912 Brass Cap
1.5" High
Cap: 1.4" High
Lat: 39.486767
Long: 108.141744

WC 1912 Brass
Cap, 1.4" High
Lat: 39.473161
Long: 108.150919

WC 1920 Brass
Cap, 2.8" High
Lat: 39.481825
Long: 108.161617

1923 Brass Cap,
Pile of Stone
Lat: 39.463817
Long: 108.227472

CC 1912 Brass
Cap, 1.0" High,
Pile of Stone
Lat: 39.473153
Long: 108.159211

1912 Brass Cap
1.5" High
Cap: 1.4" High
Lat: 39.486767
Long: 108.141744

WC 1912 Brass
Cap, 1.4" High
Lat: 39.473161
Long: 108.150919

WC 1920 Brass
Cap, 2.8" High
Lat: 39.481825
Long: 108.161617

1923 Brass Cap,
Pile of Stone
Lat: 39.463817
Long: 108.227472

CC 1912 Brass
Cap, 1.0" High,
Pile of Stone
Lat: 39.473153
Long: 108.159211

1912 Brass Cap
1.5" High
Cap: 1.4" High
Lat: 39.486767
Long: 108.141744

WC 1912 Brass
Cap, 1.4" High
Lat: 39.473161
Long: 108.150919

WC 1920 Brass
Cap, 2.8" High
Lat: 39.481825
Long: 108.161617

1923 Brass Cap,
Pile of Stone
Lat: 39.463817
Long: 108.227472

CC 1912 Brass
Cap, 1.0" High,
Pile of Stone
Lat: 39.473153
Long: 108.159211

1912 Brass Cap
1.5" High
Cap: 1.4" High
Lat: 39.486767
Long: 108.141744

WC 1912 Brass
Cap, 1.4" High
Lat: 39.473161
Long: 108.150919

WC 1920 Brass
Cap, 2.8" High
Lat: 39.481825
Long: 108.161617

1923 Brass Cap,
Pile of Stone
Lat: 39.463817
Long: 108.227472

CC 1912 Brass
Cap, 1.0" High,
Pile of Stone
Lat: 39.473153
Long: 108.159211

1912 Brass Cap
1.5" High
Cap: 1.4" High
Lat: 39.486767
Long: 108.141744

WC 1912 Brass
Cap, 1.4" High
Lat: 39.473161
Long: 108.150919

WC 1920 Brass
Cap, 2.8" High
Lat: 39.481825
Long: 108.161617

1923 Brass Cap,
Pile of Stone
Lat: 39.463817
Long: 108.227472

CC 1912 Brass
Cap, 1.0" High,
Pile of Stone
Lat: 39.473153
Long: 108.159211

1912 Brass Cap
1.5" High
Cap: 1.4" High
Lat: 39.486767
Long: 108.141744

WC 1912 Brass
Cap, 1.4" High
Lat: 39.473161
Long: 108.150919

WC 1920 Brass
Cap, 2.8" High
Lat: 39.481825
Long: 108.161617

1923 Brass Cap,
Pile of Stone
Lat: 39.463817
Long: 108.227472

CC 1912 Brass
Cap, 1.0" High,
Pile of Stone
Lat: 39.473153
Long: 108.159211

1912 Brass Cap
1.5" High
Cap: 1.4" High
Lat: 39.486767
Long: 108.141744

WC 1912 Brass
Cap, 1.4" High
Lat: 39.473161
Long: 108.150919

WC 1920 Brass
Cap, 2.8" High
Lat: 39.481825
Long: 108.161617

1923 Brass Cap,
Pile of Stone
Lat: 39.463817
Long: 108.227472

CC 1912 Brass
Cap, 1.0" High,
Pile of Stone
Lat: 39.473153
Long: 108.159211

1912 Brass Cap
1.5" High
Cap: 1.4" High
Lat: 39.486767
Long: 108.141744

WC 1912 Brass
Cap, 1.4" High
Lat: 39.473161
Long: 108.150919

WC 1920 Brass
Cap, 2.8" High
Lat: 39.481825
Long: 108.161617

LINE	BEARING	LENGTH
L1	N00°46'13"W	339.75'
L2	S89°57'42"W	264.66'
L3	N89°34'25"W	555.06'
L4	N00°59'47"W	472.36'

LINE TABLE

1923 Brass Cap,
Pile of Stone
Lat: 39.463817
Long: 108.227472

CC 1912 Brass
Cap, 1.0" High,
Pile of Stone
Lat: 39.473153
Long: 108.159211

1912 Brass Cap
1.5" High
Cap: 1.4" High
Lat: 39.486767
Long: 108.141744

WC 1912 Brass
Cap, 1.4" High
Lat: 39.473161
Long: 108.150919

WC 1920 Brass
Cap, 2.8" High
Lat: 39.481825
Long: 108.161617

1923 Brass Cap,
Pile of Stone
Lat: 39.463817
Long: 108.227472

CC 1912 Brass
Cap, 1.0" High,
Pile of Stone
Lat: 39.473153
Long: 108.159211

1912 Brass Cap
1.5" High
Cap: 1.4" High
Lat: 39.486767
Long: 108.141744

WC 1912 Brass
Cap, 1.4" High
Lat: 39.473161
Long: 108.150919

WC 1920 Brass
Cap, 2.8" High
Lat: 39.481825
Long: 108.161617

1923 Brass Cap,
Pile of Stone
Lat: 39.463817
Long: 108.227472

CC 1912 Brass
Cap, 1.0" High,
Pile of Stone
Lat: 39.473153
Long: 108.159211

1912 Brass Cap
1.5" High
Cap: 1.4" High
Lat: 39.486767
Long: 108.141744

WC 1912 Brass
Cap, 1.4" High
Lat: 39.473161
Long: 108.150919

WC 1920 Brass
Cap, 2.8" High
Lat: 39.481825
Long: 108.161617

1923 Brass Cap,
Pile of Stone
Lat: 39.463817
Long: 108.227472

CC 1912 Brass
Cap, 1.0" High,
Pile of Stone
Lat: 39.473153
Long: 108.159211

1912 Brass Cap
1.5" High
Cap: 1.4" High
Lat: 39.486767
Long: 108.141744

NOTE:
SEE CURRENT FOOTAGE PLAT FOR EXISTING
IMPROVEMENT WITHIN 400' OF THE PROPOSED
WELL HEAD.

PDOP = 3.1

NAD 83 (TARGET BOTTOM HOLE)	NAD 83 (SURFACE LOCATION)
LATITUDE = 39°28'33.77" (39.476047)	LATITUDE = 39°28'45.50" (39.479306)
LONGITUDE = 108°08'51.74" (108.147706)	LONGITUDE = 108°08'51.35" (108.147897)
STATE PLANE-(COLO. CENTRAL-NAD 83)	STATE PLANE-(COLO. CENTRAL-NAD 83)
N = 1609170.000	N = 1610355.426
E = 2252710.000	E = 2252775.359

LEGEND:

- = 90° SYMBOL
- = PROPOSED WELL HEAD.
- ▲ = SECTION CORNERS LOCATED.