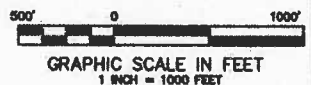
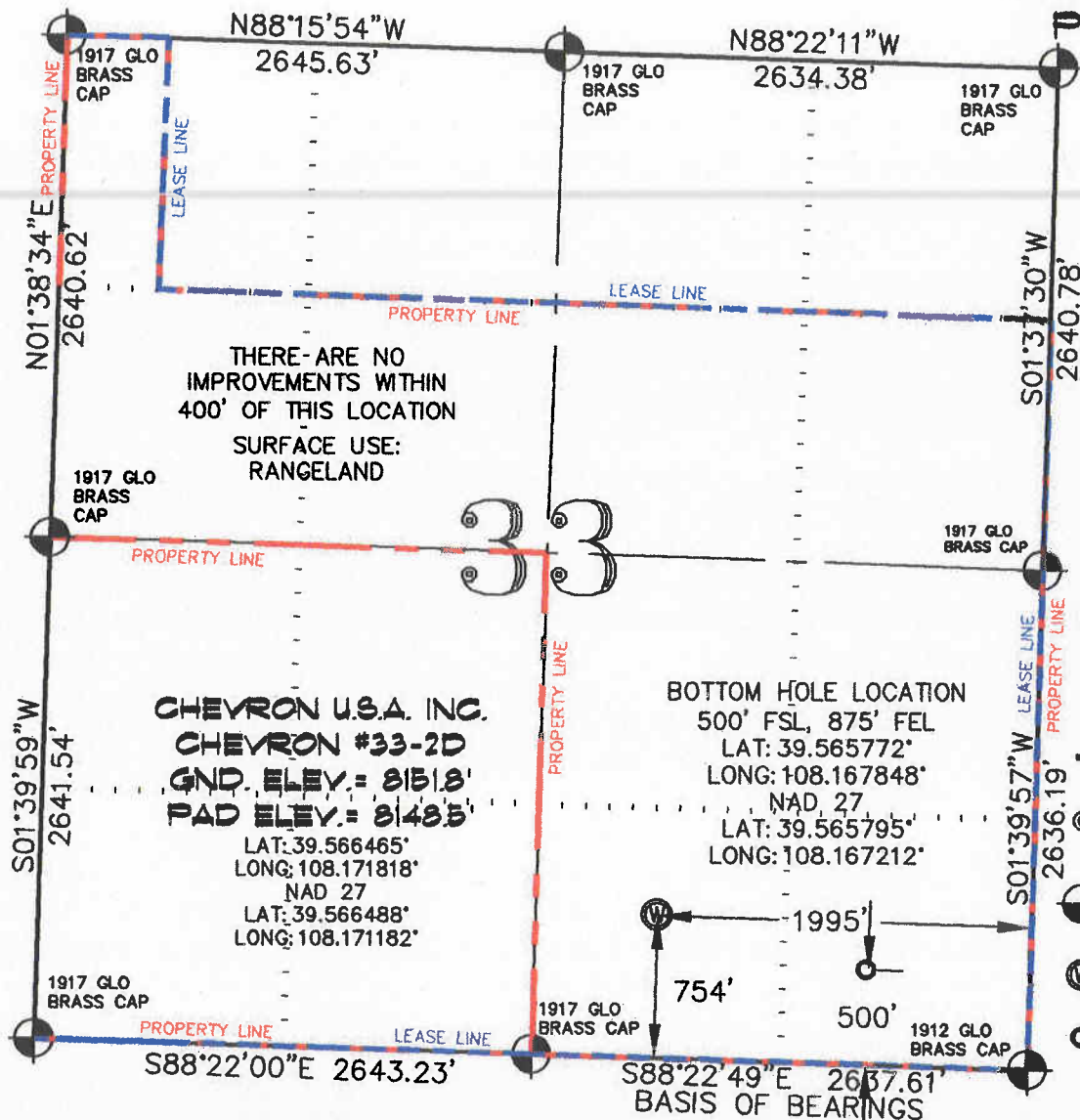


SEC. 33, T. 5 S., R. 96 W. OF THE 6TH P.M.

Chevron 033-596

Pad Location



**-LEGEND-**

- SECTION CORNER LOCATION BASED ON GLO RECORD INFORMATION
- ⊙ FIELD SURVEYED SECTION CORNER LOCATIONS
- ⊙ FIELD SURVEYED WELL LOCATION
- CALCULATED BOTTOM HOLE LOCATION

**THIS WELL LOCATION PLAT WAS PREPARED FOR BERRY PETROLEUM COMPANY TO LOCATE THE CHEVRON #33-2D WELL, 754 FEET FROM THE SOUTH LINE AND 1995 FEET FROM THE EAST LINE IN THE SW1/4 SE1/4 OF SECTION 33, T. 5 S., R. 96 W. OF THE 6TH P.M. GARFIELD COUNTY, COLORADO.**

**REFERENCE NOTES**

- 1) T. 5 S., R. 96 W., 6TH P.M. GLO PLAT.
- 2) U.S.G.S. QUAD: CIRLCE DOT GULCH, CO
- 3) ELEVATIONS BASED ON N.A.V.D. 1988
- 4) LATITUDES AND LONGITUDES ARE BASED ON NAD 83, COLORADO CENTRAL ZONE.
- 5) GPS OPERATOR ROBERT WOOD, OBSERVED A PDOP OF 2.2.
- 6) ALL GPS OBSERVATIONS ARE IN COMPLIANCE WITH COGCC RULE NO. 215.
- 7) SURFACE AND BOTTOM HOLE LOCATIONS ARE MEASURED 90° FROM SECTION LINES.

**SURVEYOR'S CERTIFICATE**

I, George R. Bauer: a Professional Land Surveyor in the State of Colorado do hereby certify that this Survey was made under my direct supervision, and that this Plat represents said Survey.



COLORADO P.L.S. 27925



**CONSTRUCTION SURVEYS, INC.**  
 0012 SUNRISE BLVD.  
 SILT, CO 81652  
 (970)876-5753

VIEW: 1G

SURVEYED: 06/26/06	SCALE: 1" = 1000'
DRAFTED: 02/05/10	DWG: BERRY\CHEV033-596
CHECKED: 02/17/10	SHEET: 1 of 11