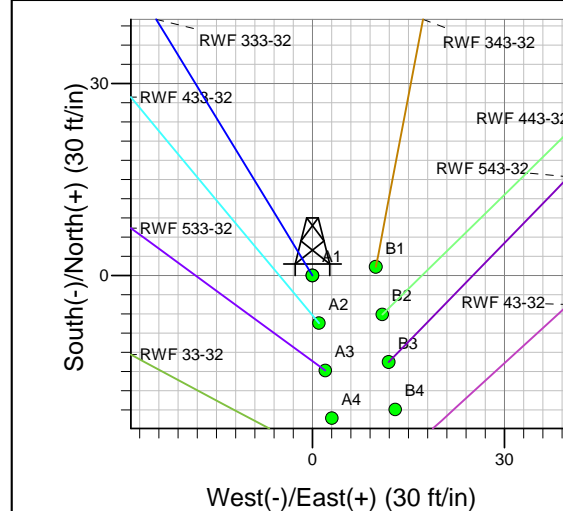
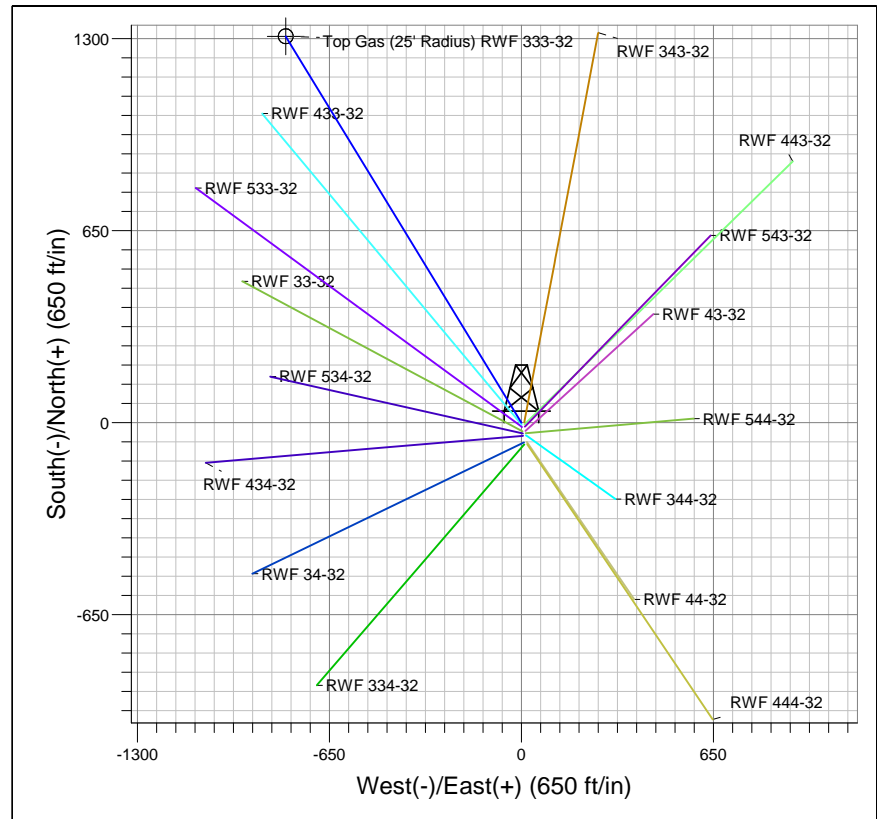
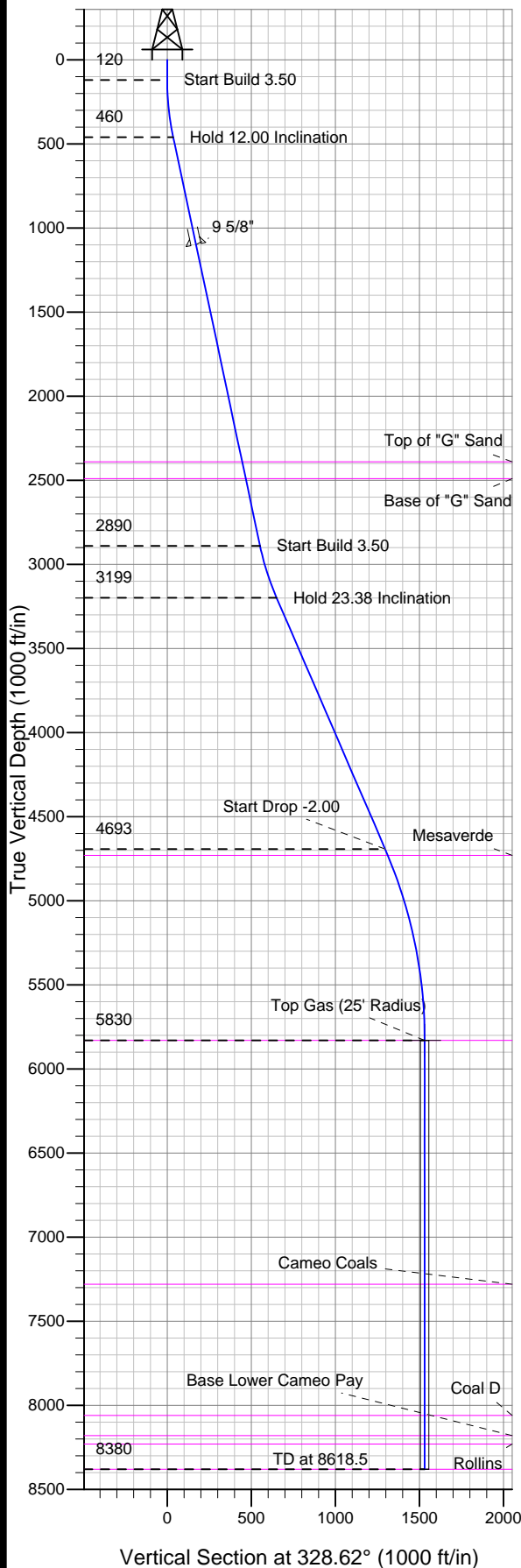




Well Name: RWF 333-32  
Surface Location: RWF 44-32 Pad  
North American Datum 1983 , US State Plane 1983 , Colorado Central Zone  
Ground Elevation: 6012.0  
+N/-S +E/-W Northing Easting Latitude Longitude Slot  
0.0 0.0 1607842.20 2321025.20 39° 28' 39.429 N 107° 54' 20.357 W A1  
KELLY BUSHING @ 6036.0ft (H&P (24' RKB) kjs)



Project: RU 32-06S-094W  
Site: RWF 44-32 Pad  
Well: RWF 333-32  
Plan #1 13Aug09 kjs

Azimuths to True North  
Magnetic North: 10.53°  
Magnetic Field  
Strength: 52512.6snT  
Dip Angle: 65.80°  
Date: 8/13/2009  
Model: IGRF2005-10

#### SECTION DETAILS

Sec	MD	Inc	Azi	TVD	+N/-S	+E/-W	DLeg	TFace	VSec	Target
1	0.0	0.00	0.00	0.0	0.0	0.0	0.00	0.00	0.0	
2	120.0	0.00	0.00	120.0	0.0	0.0	0.00	0.00	0.0	
3	462.9	12.00	328.62	460.4	30.5	-18.6	3.50	328.62	35.8	
4	2946.8	12.00	328.62	2890.0	471.4	-287.5	0.00	0.00	552.2	
5	3271.9	23.38	328.62	3199.3	555.7	-338.9	3.50	0.00	650.9	
6	4899.5	23.38	328.62	4693.2	1107.1	-675.2	0.00	0.00	1296.7	
7	6068.5	0.00	0.00	5830.0	1307.9	-797.6	2.00	180.00	1531.9	Top Gas (25' Radius) RWF 333-32
8	8618.5	0.00	0.00	8380.0	1307.9	-797.6	0.00	0.00	1531.9	

#### ANNOTATIONS

TVD	MD	Annotation
120.0	120.0	Start Build 3.50
460.4	462.9	Hold 12.00 Inclination
2890.0	2946.8	Start Build 3.50
3199.3	3271.9	Hold 23.38 Inclination
4693.2	4899.5	Start Drop -2.00
5830.0	6068.5	Top Gas
8380.0	8618.5	TD at 8618.5