

Burchfield - RWF 44-32 Drill Pad

RWF 444-32, RWF 44-32, RWF 434-32, RWF 534-32, RWF 33-32, RWF 533-32,
RWF 433-32, RWF 333-32, RWF 334-32, RWF 34-32, RWF 344-.32,
RWF 544-32, RWF 43-32, RWF 543-32, RWF 443-32, RWF 343-32

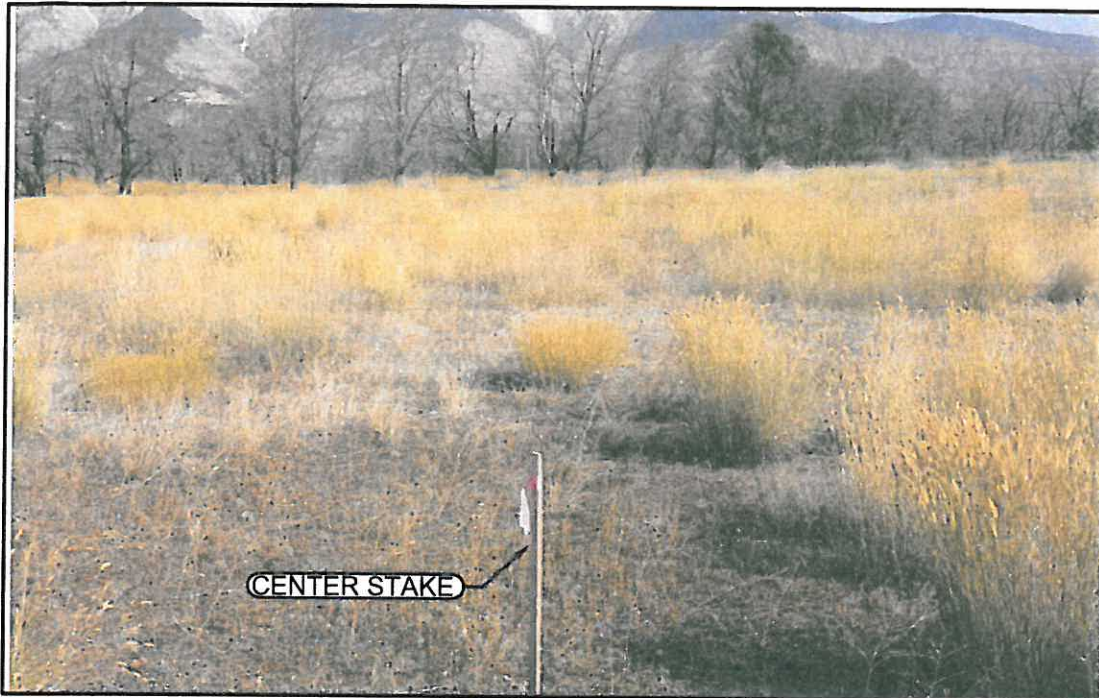


PHOTO: VIEW FROM PAD CENTER

CAMERA ANGLE: NORTH



PHOTO: VIEW FROM PAD CENTER

CAMERA ANGLE: EAST

136 East Third Street
Rifle, Colorado 81650
Ph. (970) 625-1330
Fax (970) 625-2773



BOOKCLIFF
Survey Services, Inc.

PHOTO DATE: 9/4/09
TAKEN BY: CWS
DRAWN BY: CWS
SHEET: 1 of 3
PROJECT: Williams

LOCATION PHOTOS Prepared for:
Williams. Williams Production, RMT
SE1/4 SE1/4, SECTION 32
T. 6 S., R. 94 W. of the 6th. P.M.
GARFIELD COUNTY, COLORADO

Burchfield - RWF 44-32 Drill Pad

RWF 444-32, RWF 44-32, RWF 434-32, RWF 534-32, RWF 33-32, RWF 533-32,
RWF 433-32, RWF 333-32, RWF 334-32, RWF 34-32, RWF 344-32,
RWF 544-32, RWF 43-32, RWF 543-32, RWF 443-32, RWF 343-32

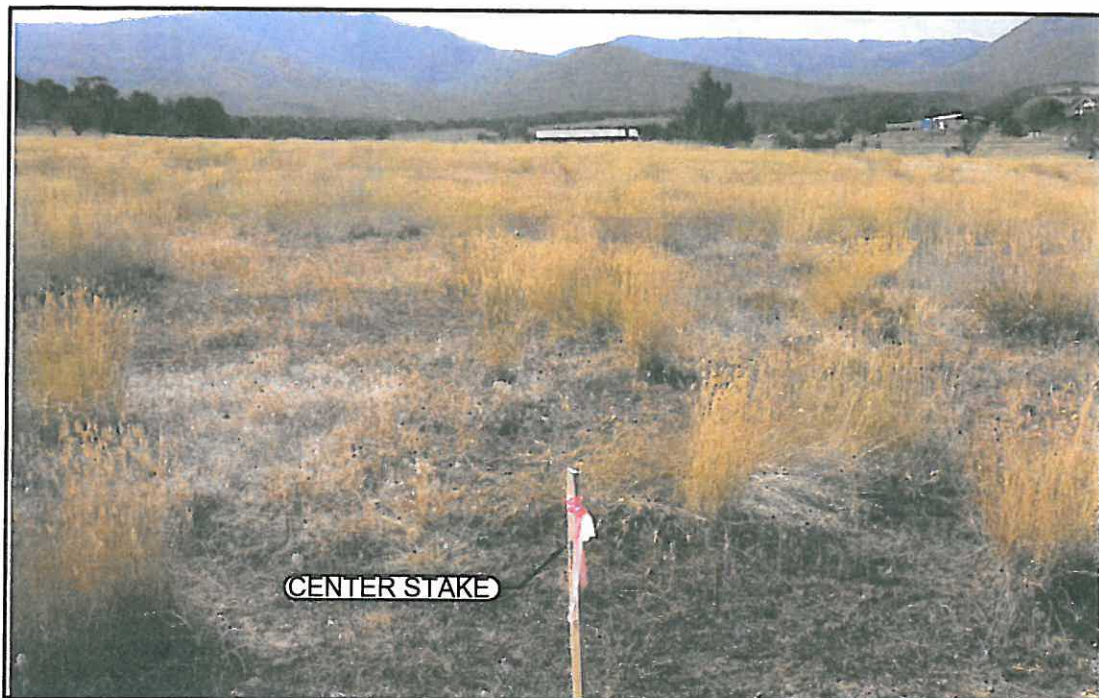


PHOTO: VIEW FROM PAD CENTER

CAMERA ANGLE: SOUTH



PHOTO: VIEW FROM PAD CENTER

CAMERA ANGLE: WEST

134 East Third Street
Rifle, Colorado 81650
Ph. (970) 625-1330
Fax (970) 625-2773



BOOKCLIFF
Survey Services, Inc.

PHOTO DATE: 9/4/09
TAKEN BY: CWS
DRAWN BY: CWS
SHEET: 2 of 3
PROJECT: Williams

LOCATION PHOTOS Prepared for:
Williams Williams Production, RMT
SE1/4 SE1/4, SECTION 32
T. 6 S., R. 94 W. of the 6th. P.M.
GARFIELD COUNTY, COLORADO

Burchfield - RWF 44-32 Drill Pad

RWF 444-32, RWF 44-32, RWF 434-32, RWF 534-32, RWF 33-32, RWF 533-32,
RWF 433-32, RWF 333-32, RWF 334-32, RWF 34-32, RWF 344-32,
RWF 544-32, RWF 43-32, RWF 543-32, RWF 443-32, RWF 343-32

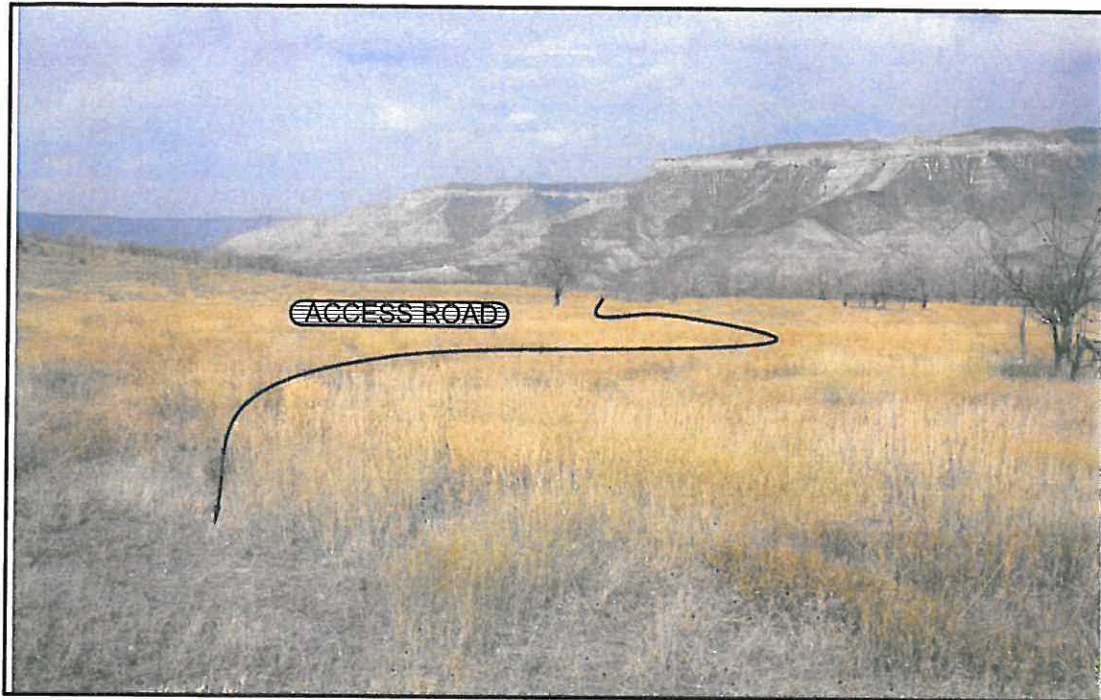


PHOTO: VIEW FROM WEST EDGE OF PAD

CAMERA ANGLE: NORTHWEST



PHOTO: VIEW FROM SOUTHWEST OF PAD

CAMERA ANGLE: NORTHEAST

136 East Third Street
Rifle, Colorado 81650
Ph: (970) 625-1330
Fax (970) 625-2773



BOOKCLIFF
Survey Services, Inc.

PHOTO DATE: 9/4/09
TAKEN BY: CWS
DRAWN BY: CWS
SHEET: 3 of 3
PROJECT: Williams

LOCATION PHOTOS Prepared for:
Williams Williams Production, RMT

SE1/4 SE1/4, SECTION 32
T. 6 S., R. 94 W. of the 6th. P.M.
GARFIELD COUNTY, COLORADO