



SUPERIOR
Black Lick, Pa.
Mercer, Pa.
Wooster, Oh.
Cleveland, Ok.
Trinidad, Co.

DUAL INDUCTION LOG

Company	XTO Energy Inc.	Company	XTO Energy Inc.
Well	Apache Canyon 26-02	Well	Apache Canyon 26-02
Field	Purgatoire River	Field	Purgatoire River
County	Las Animas	County	Las Animas
State	Colorado	State	Colorado
Location:	API # : 05 071 08813 00 234' FNL & 2495' FEL	Other Services cdl neutron	
Permanent Datum	SEC 26 TWP 34S RGE 68W	Elevation	
Log Measured From	Ground Level	K.B. -----	
Drilling Measured From	Ground Level	D.F. -----	
		G.L. 8044'	
Date	01-18-07		
Run Number	One		
Depth Driller	1945'		
Depth Logger	1941'		
Bottom Logged Interval	1939'		
Top Log Interval	Surface Casing		
Casing Driller	8 5/8" @ 500'		
Casing Logger	499'		
Bit Size	7 7/8"		
Type Fluid in Hole	Water		
Density / Viscosity	///		
pH / Fluid Loss	///		
Source of Sample	///		
Rm @ Meas. Temp	///		
Rmf @ Meas. Temp	///		
Rmc @ Meas. Temp	///		
Source of Rmf / Rmc	///		
Rm @ BHT	///		
Time Circulation Stopped	1:00 p.m.		
Time Logger on Bottom	2:50 p.m.		
Maximum Recorded Temperature	112		
Equipment Number	T701		
Location	Trinidad		
Recorded By	L. Smith		
Witnessed By	Mr. Don Johnson		

>>> Fold Here >>>

All interpretations are opinions based on inferences from electrical or other measurements and we cannot and do not guarantee the accuracy or correctness of any interpretation, and we shall not, except in the case of gross or willful negligence on our part, be liable or responsible for any loss, costs, damages, or expenses incurred or sustained by anyone resulting from any interpretation made by any of our officers, agents or employees. These interpretations are also subject to our general terms and conditions set out in our current Price Schedule.

Comments

GR logged to surface.
Bosque before Weston, stay on main rd.approx. 8 miles,
turn left at Monte Leone Canyon, then take first right, location is
at end of rd.



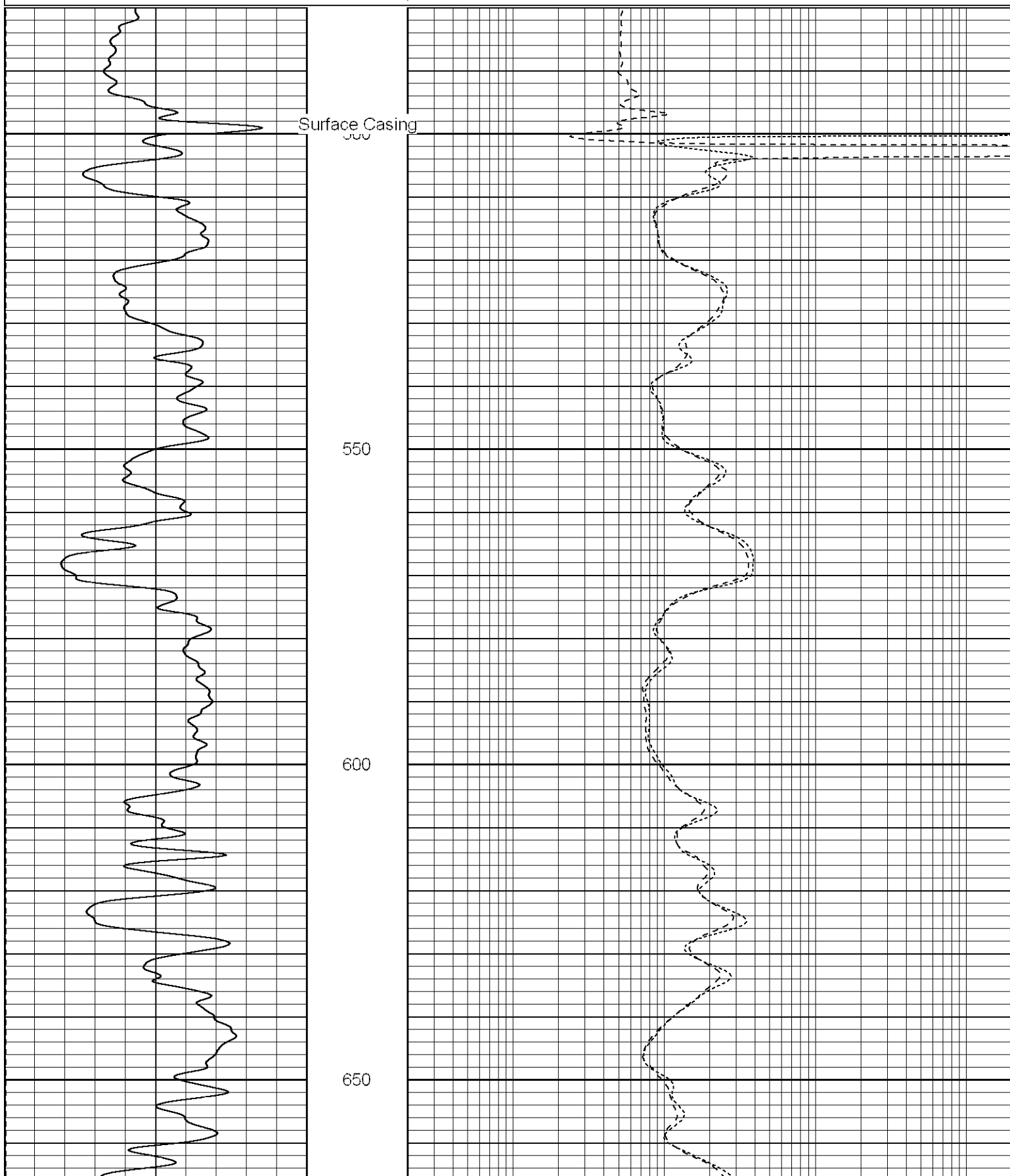
SUPERIOR
Black Lick, Pa.
Mercer, Pa.
Wooster, Oh.
Cleveland, Ok.
Trinidad, Co.

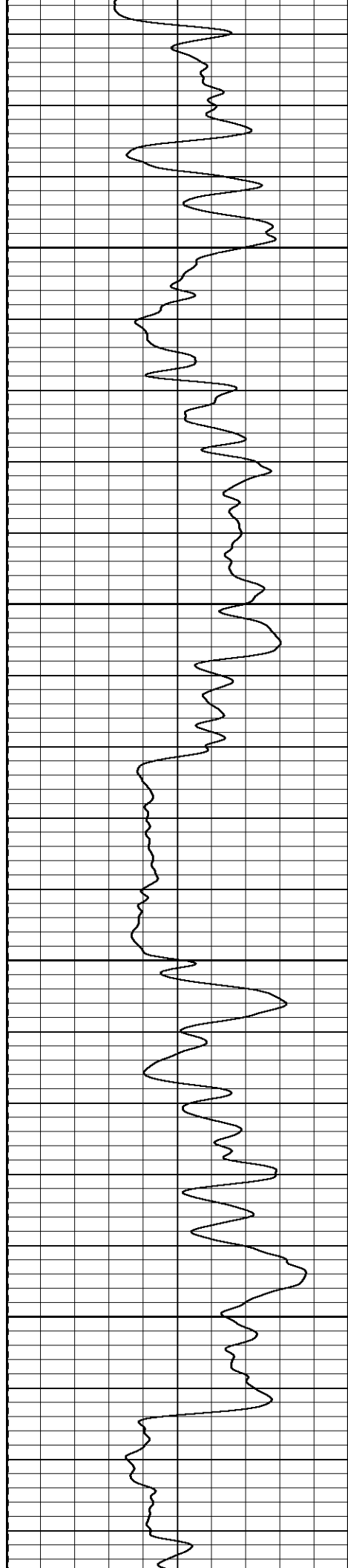
Main Pass

Database File: xtoac2602.db
Dataset Pathname: pass2.1
Presentation Format: dil
Dataset Creation: Thu Jan 18 16:19:17 2007 by Calc Open-Cased 060407
Charted by: Depth in Feet scaled 1:240

0	GR (GAPI)	200
-200	SP (mV)	0

0.2	RILD (Ohm-m)	2000
0.2	RILM (Ohm-m)	2000
0.2	RLL3 (Ohm-m)	2000



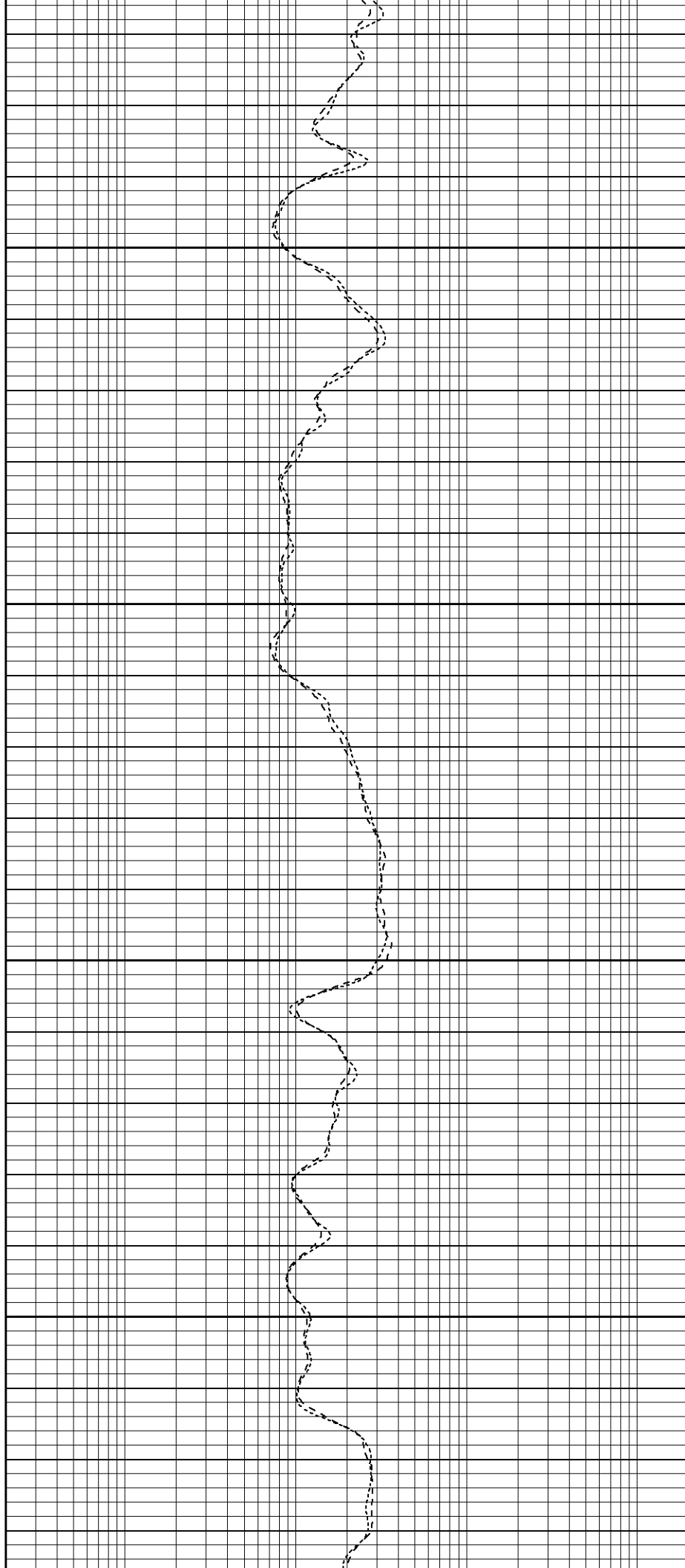


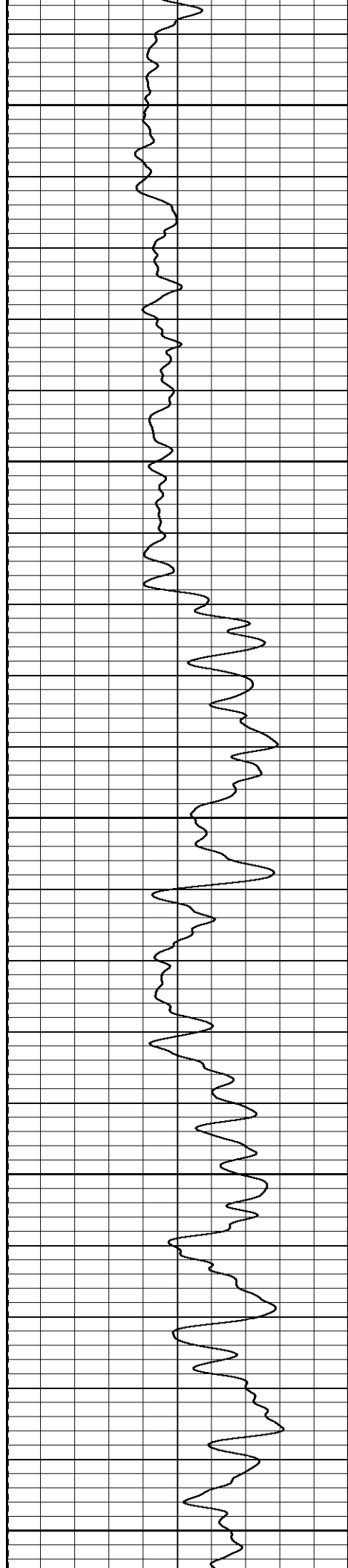
700

750

800

850





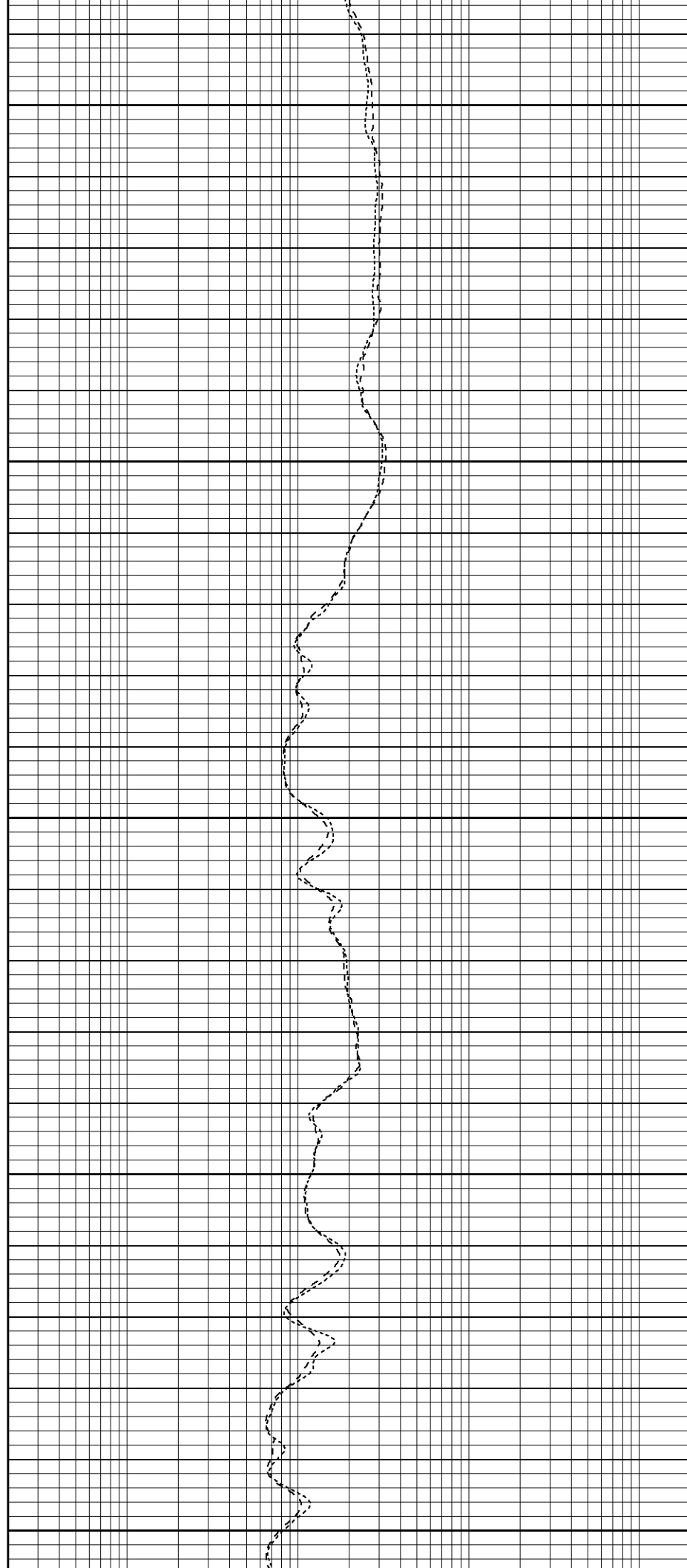
900

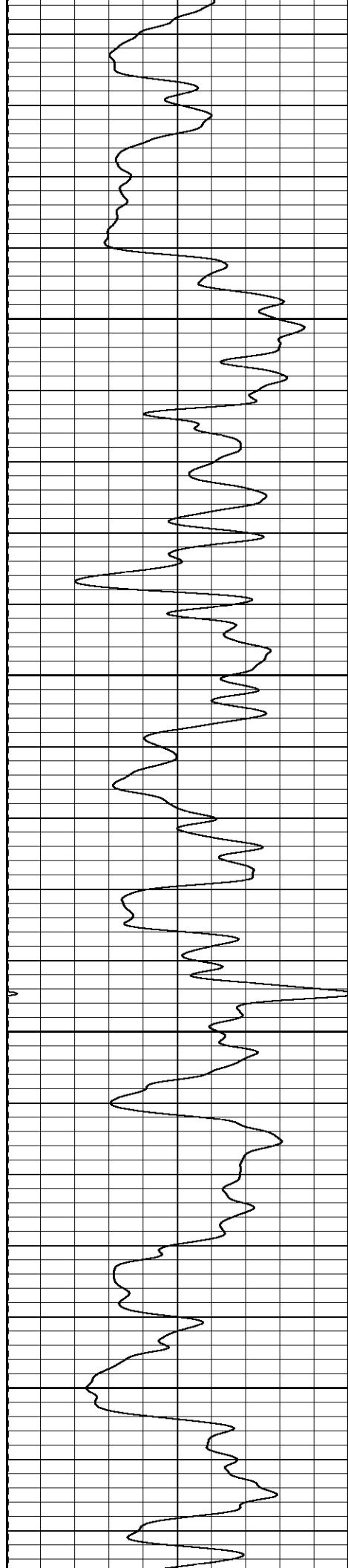
950

1000

1050

1100



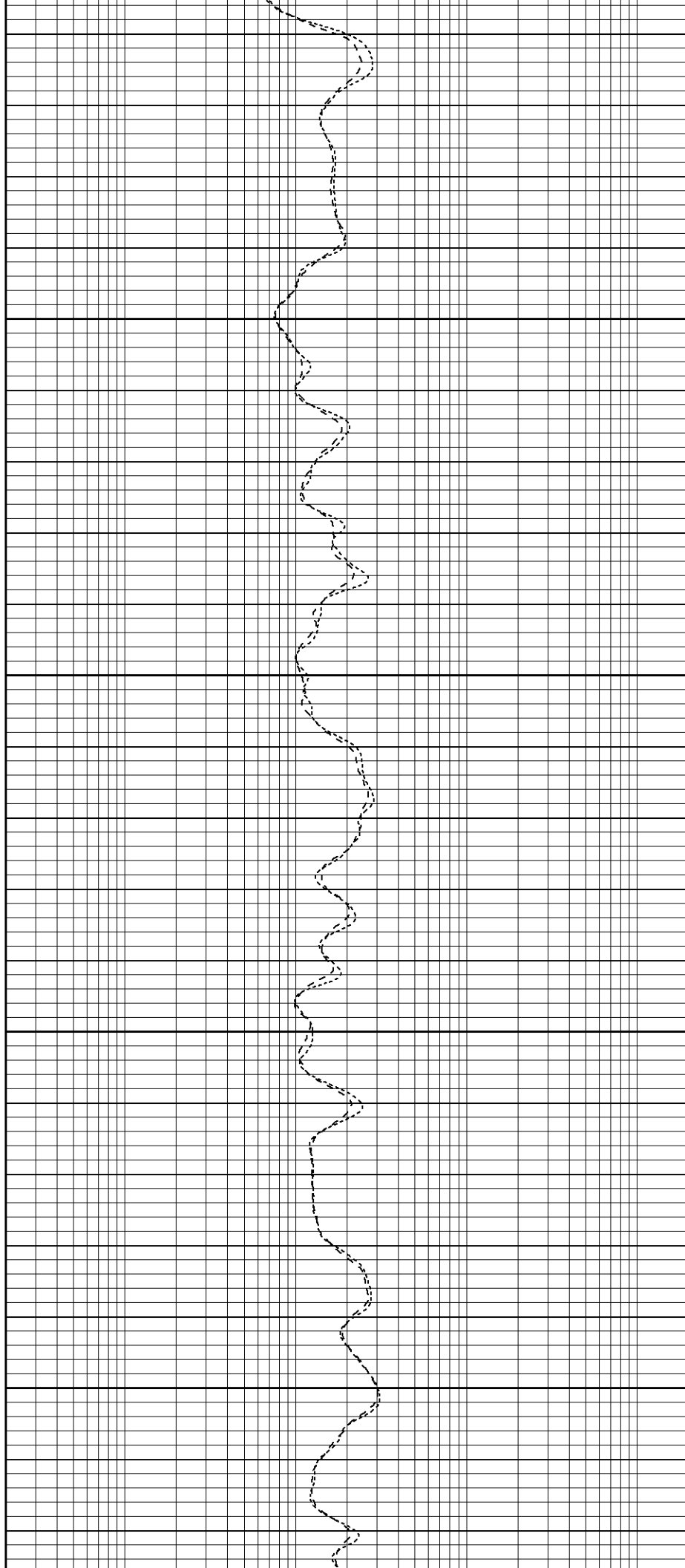


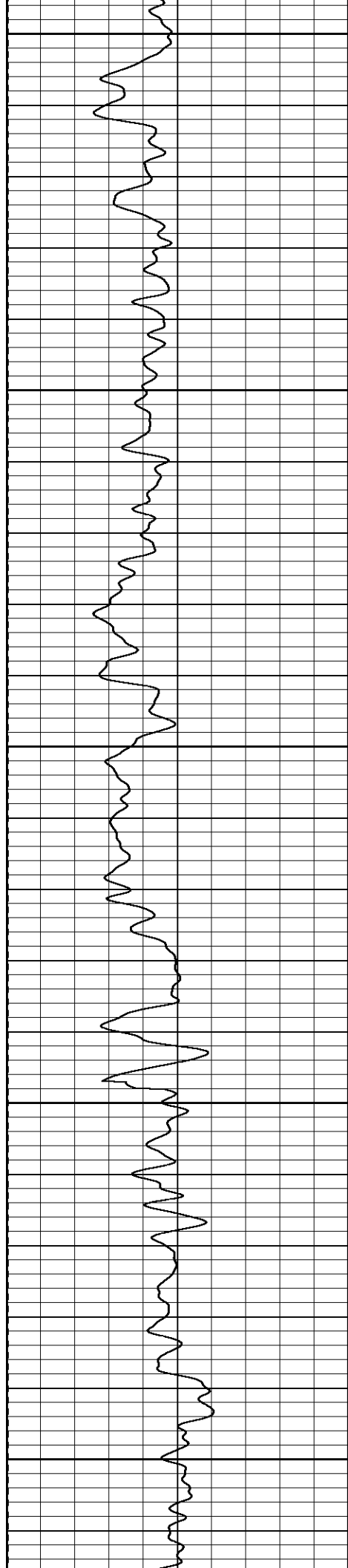
1150

1200

1250

1300





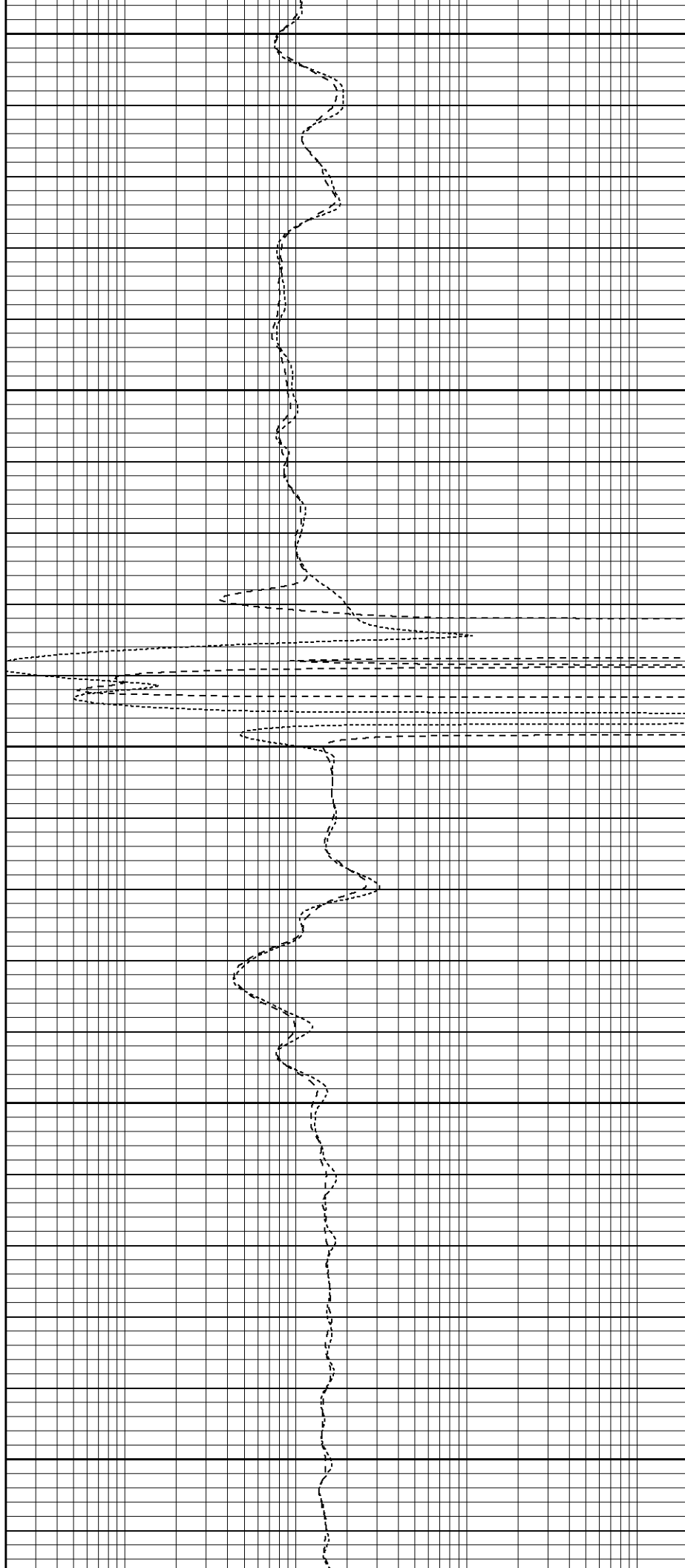
1550

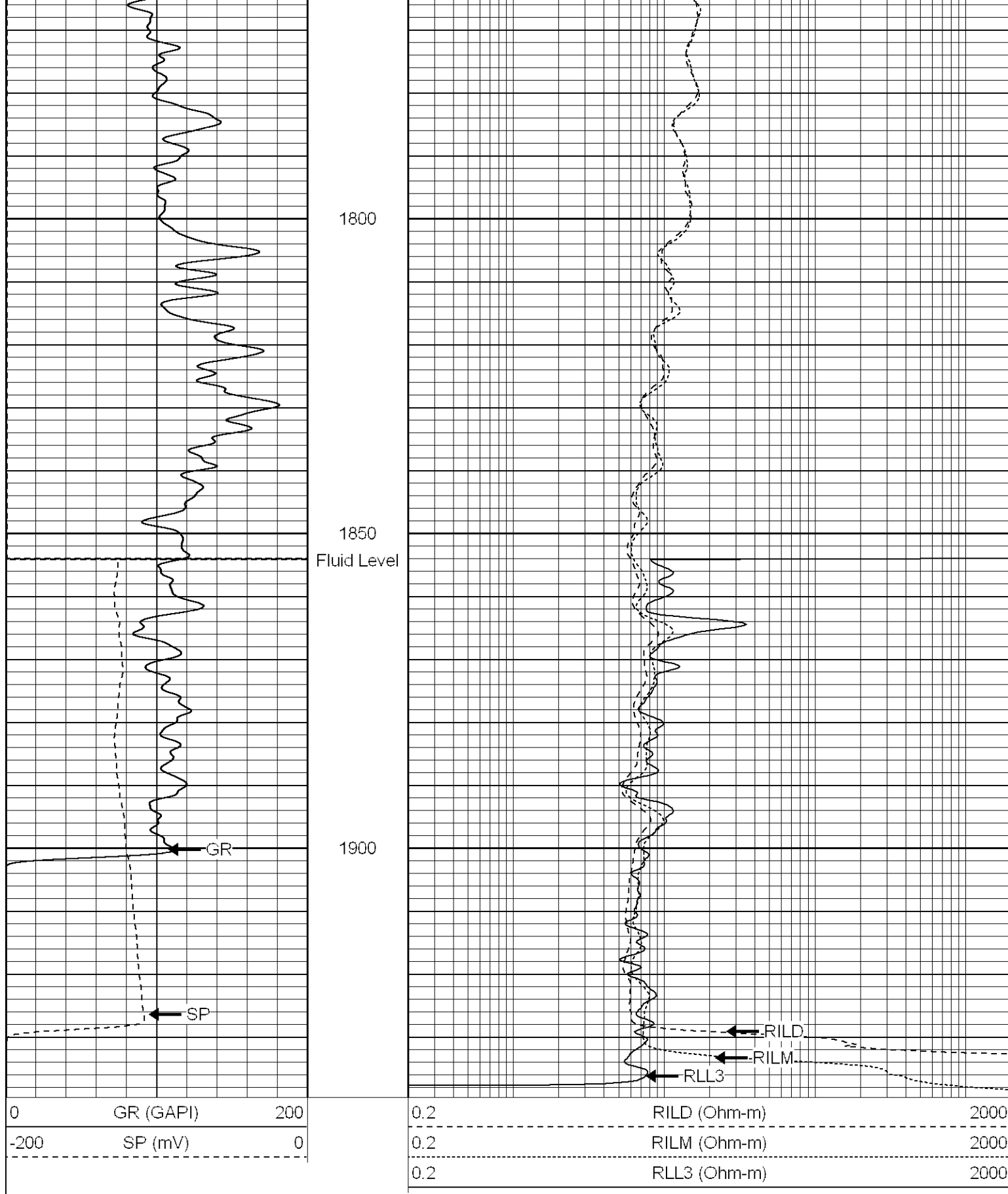
1600

1650

1700

1750





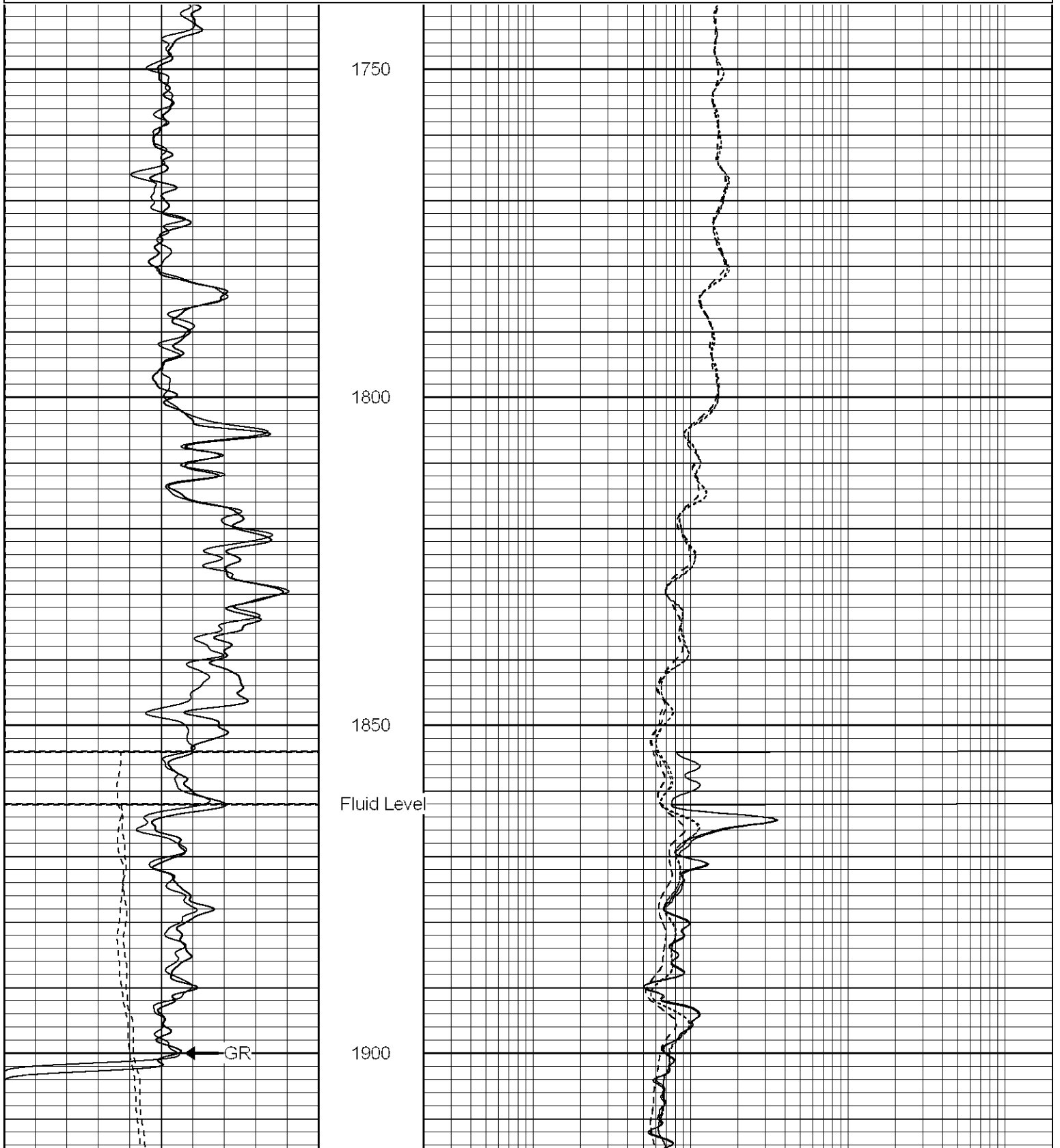
SUPERIOR
 Black Lick, Pa.
 Mercer, Pa.
 Wooster, Oh.
 Cleveland, Ok.
 Trinidad, Co.

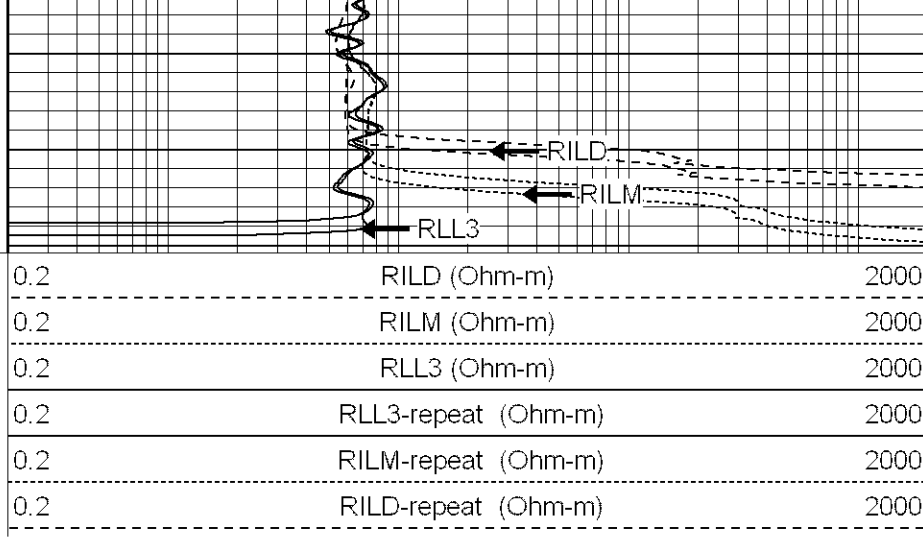
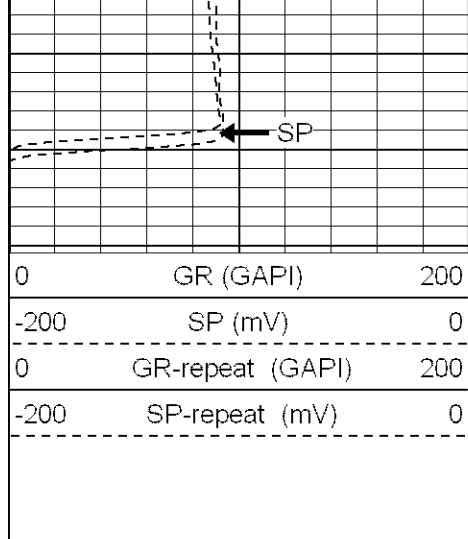
Repeat Pass

Dataset Pathname: pass1.1
Presentation Format: dil
Dataset Creation: Thu Jan 18 15:38:26 2007 by Calc Open-Cased 060407
Charted by: Depth in Feet scaled 1:240

0	GR (GAPI)	200
-200	SP (mV)	0
0	GR-repeat (GAPI)	200
-200	SP-repeat (mV)	0

0.2	RILD (Ohm-m)	2000
0.2	RILM (Ohm-m)	2000
0.2	RLL3 (Ohm-m)	2000
0.2	RLL3-repeat (Ohm-m)	2000
0.2	RILM-repeat (Ohm-m)	2000
0.2	RILD-repeat (Ohm-m)	2000





Calibration Report	
Database File:	xtoac2602.db
Dataset Pathname:	pass1
Dataset Creation:	Thu Jan 18 14:50:27 2007 by Log Open-Cased 060407

Dual Induction Calibration Report	
Serial-Model:	5375-G
Surface Cal Performed:	Tue Jan 09 13:17:43 2007
Downhole Cal Performed:	Tue Jan 09 13:18:11 2007

Surface Calibration								
Loop:	Readings			References			Results	
	Air	Loop		Air	Loop		m	b
Deep	0.007	0.625	V	0.000	500.000	mmho-m	809.614	-5.856
Medium	0.010	0.747	V	0.000	550.000	mmho-m	746.393	-7.503
Internal:	Zero	Cal		Zero	Cal		m	b
Deep	0.007	0.626	V	0.000	500.000	mmho-m	808.671	-5.957
Medium	0.010	0.747	V	0.000	550.000	mmho-m	745.979	-7.399

Downhole Calibration								
Internal:	Readings			References			Results	
	Zero	Cal		Zero	Cal		m	b
Deep	0.222	500.717	mmho-m	0.109	500.692	mmho-m	1.000	-0.114
Medium	-0.178	550.064	mmho-m	-0.100	550.205	mmho-m	1.000	0.077
Shallow	2.515	0.017	V	500.000	2.000	Ohm-m	179.332	-3.000

Compensated Density Calibration Report	
Serial-Model:	902-2.75POH
Source / Verifier:	/
Master Calibration Performed:	Thu Jan 11 14:44:29 2007

Master Calibration					
	Density		Far Detector		Near Detector
Magnesium	1.710	g/cc	1015.57	498.52	cps
Aluminum	2.585	g/cc	183.60	250.82	cps

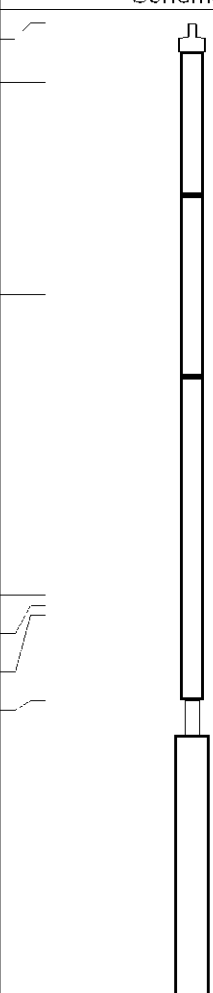
Aluminum	2.000	g/cc	100.00	200.02	cps
Spine Angle = 68.12			Density/Spine Ratio = 0.475		
	Size		Reading		
Small Ring	8.05	in	1.84	V	
Large Ring	17.00	in	4.32	V	

Neutron Calibration Report

Serial Number:	802	
Tool Model:	2.75POH	
Performed:	Wed Jan 10 07:15:31 2007	
Calibrator Value:	1	NAPI
Calibrator Reading:	1	cps
Sensitivity:	1	NAPI/cps

Gamma Ray Calibration Report

Serial Number:	804	
Tool Model:	2.75POH	
Performed:	Thu Jan 11 10:15:54 2007	
Calibrator Value:	1.0	GAPI
Background Reading:	0.0	cps
Calibrator Reading:	1.0	cps
Sensitivity:	0.8000	GAPI/cps

Sensor	Offset (ft)	Schematic	Description	Len (ft)	OD (in)	Wt (lb)
CHD	39.37		None	0.75	1.50	5.00
GR	37.84		GR-2.75POH (804) Probe	3.73	2.75	43.00
NEU	32.30		NEU-2.75POH (802) Probe Epithermal	4.75	2.75	58.00
LSD	24.47		CDL-2.75POH (902) Probe	8.43	2.75	106.00
DCAL	24.19					
SSD	23.95					
10pin	21.72		Probe	0.89	3.50	20.00

CILD SP	10.60 10.60		20.83	4.00	345.00
CILM	6.89				
RLL3	1.70				

Dataset: xtoac2602.db: field/well/run1/pass1
Total Length: 39.37 ft
Total Weight: 577.00 lb
O.D. 4.00 in