



**SUPERIOR**  
WELL SERVICES  
Black Lick, Pa.  
Mercer, Pa.  
Wooster, Oh.  
Cleveland, Ok.  
Trinidad, Co.

## CEMENT BOND LOG

Company XTO Energy Inc.  
Well Apache Canyon 29-04  
Field Purgatoire River  
County Las Animas State Colorado

Location: API # : 05 071 09281 00

1308' FNL & 564' FWL

SEC 29 TWP 34S RGE 67W

Permanent Datum Ground Level Elevation 8130'  
Log Measured From Ground Level  
Drilling Measured From Ground Level

Other Services  
temp  
Elevation  
K.B. -----  
D.F. -----  
G.L. 8130'

Date 9-19-07

Run Number	One		
Depth Driller	2725'		
Depth Logger	2621'		
Bottom Logged Interval	2617'		
Top Log Interval	Surface		
Open Hole Size	7 7/8"		
Type Fluid	Water		
Density / Viscosity	///		
Max. Recorded Temp.	116 DEG F		
Estimated Cement Top	Surface		
Time Well Ready	ROA		
Time Logger on Bottom	9:45 A.M.		
Equipment Number	T0701		
Location	Trinidad		
Recorded By	C. Sisneros		
Witnessed By	Mr. Billy Blatnick		

Borehole Record				Tubing Record			
Bit	From	To	Size	Weight	From	To	

Casing Record	Size	Wgt/Ft	Top	Bottom
Surface String	8 5/8"		00	494'
Prot. String				
Production String	5 1/2"		00	N/A
Liner				

>>> Fold Here >>>

All interpretations are opinions based on inferences from electrical or other measurements and we cannot and do not guarantee the accuracy or correctness of any interpretation, and we shall not, except in the case of gross or willful negligence on our part, be liable or responsible for any loss, costs, damages, or expenses incurred or sustained by anyone resulting from any interpretation made by any of our officers, agents or employees. These interpretations are also subject to our general terms and conditions set out in our current Price Schedule.

### Comments

First Bosque entrance, left up Little Bingham, at top of hill take second right, first right, drive thru Apache Canyon 29-06, at Y stay left to location.



**SUPERIOR**  
Black Lick, Pa.  
Mercer, Pa.  
Wooster, Oh.  
Cleveland, Ok.  
Trinidad, Co.

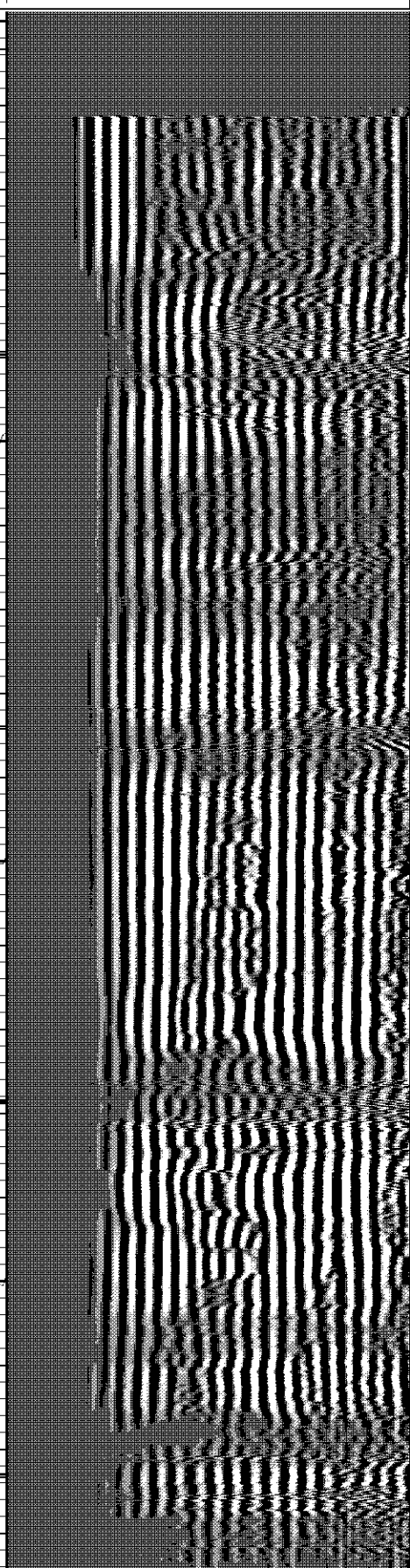
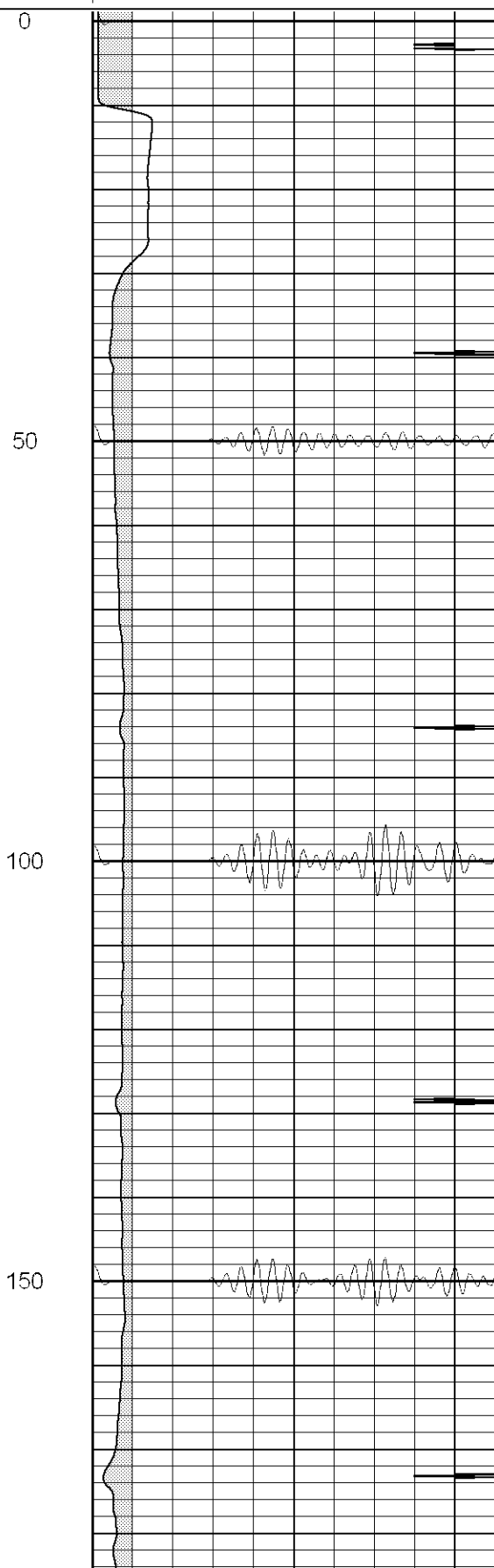
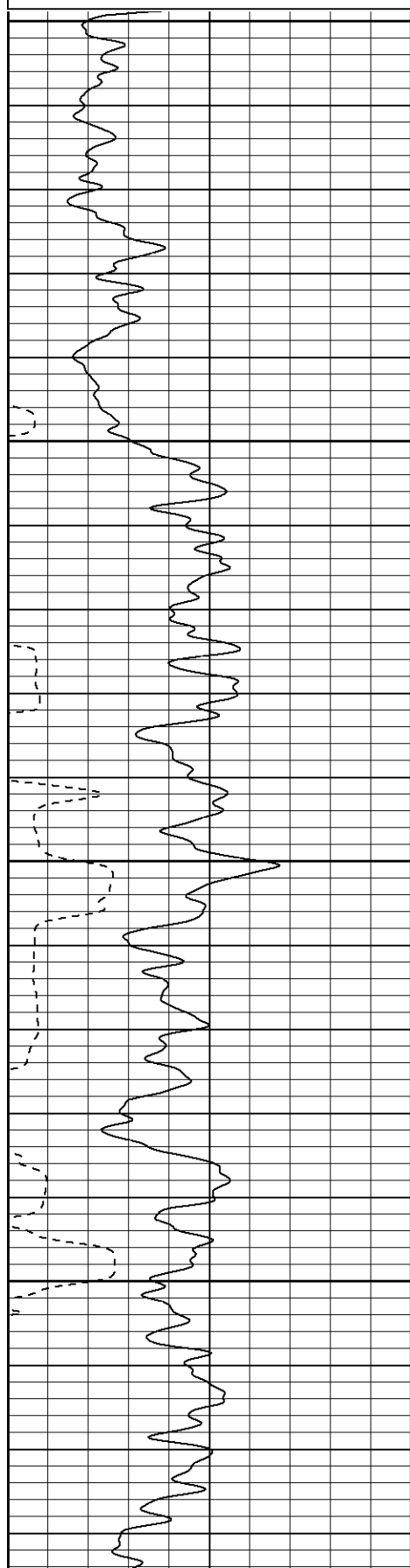
# Main Pass

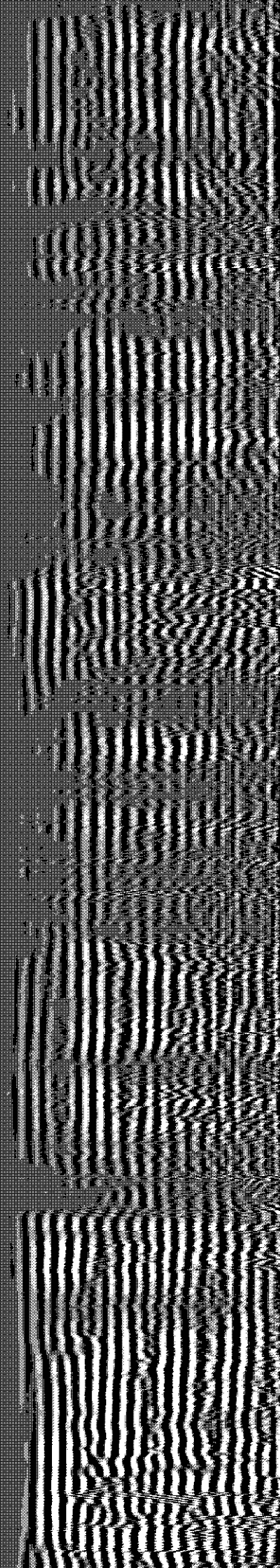
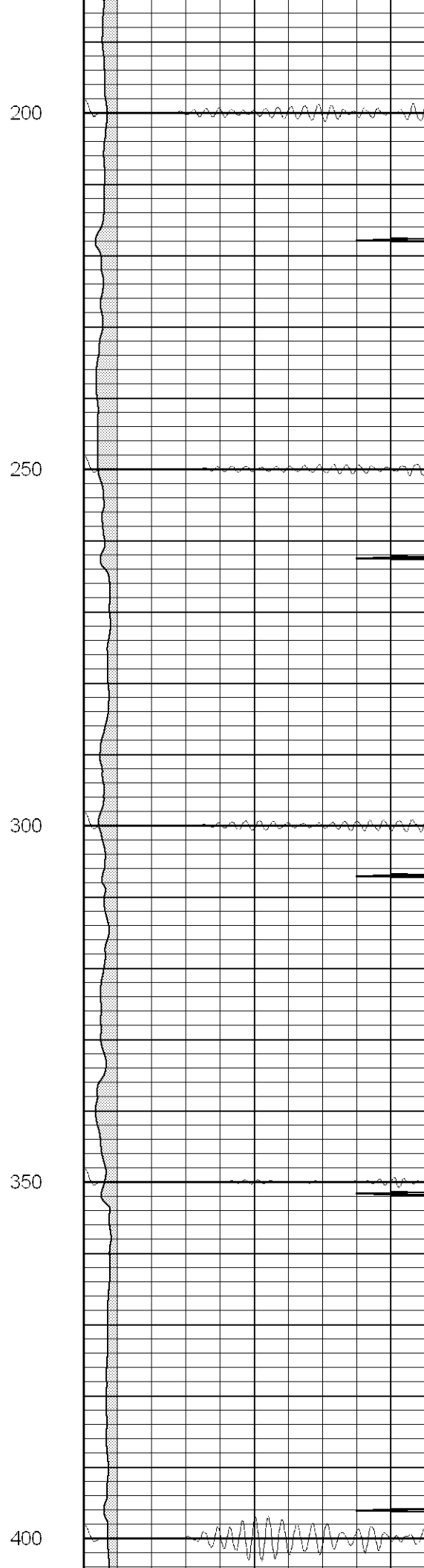
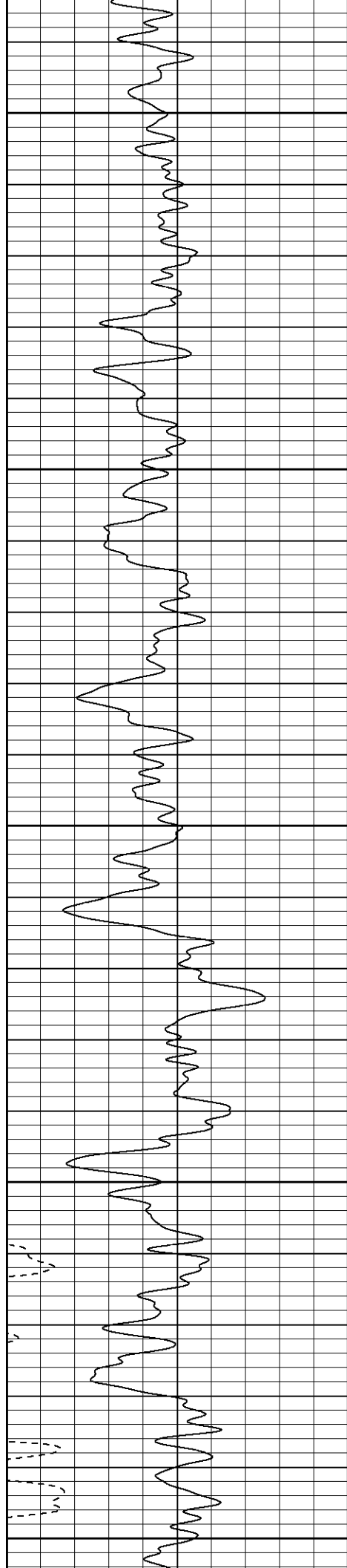
Database File: ac2904091907b.db  
Dataset Pathname: pass4  
Presentation Format: cblrt  
Dataset Creation: Wed Sep 19 10:21:11 2007 by Log Open-Cased 070508  
Charted by: Depth in Feet scaled 1:240

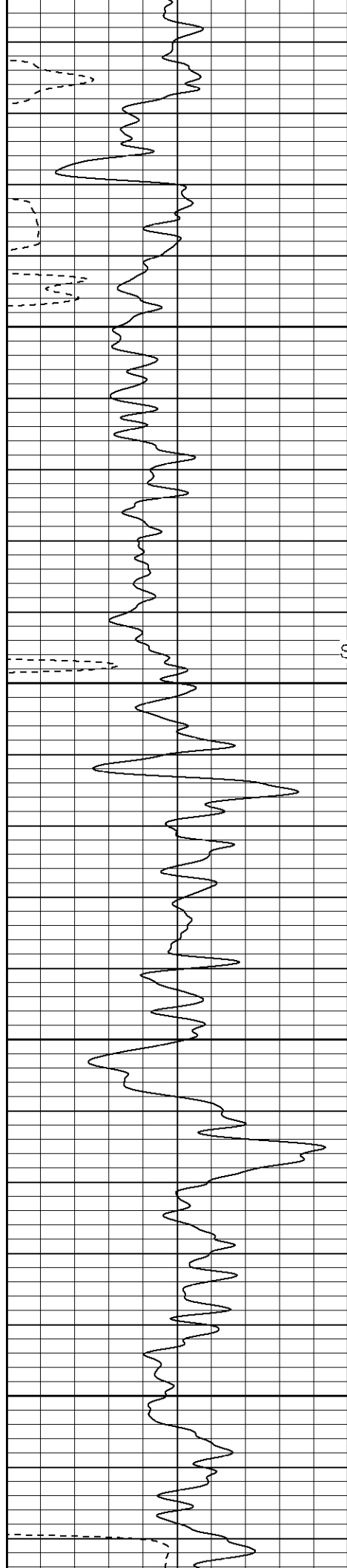
0	GR (GAPI)	200
400	TT3 (usec)	200

0	AMP3 (mV)	100
18	CCL	-2
100	CBL5	1200

200 Variable Density 1200







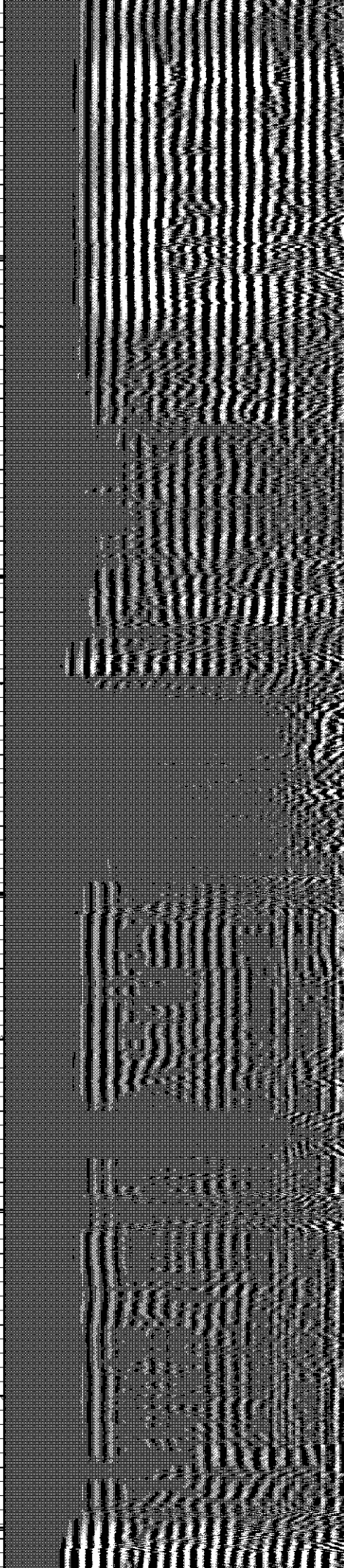
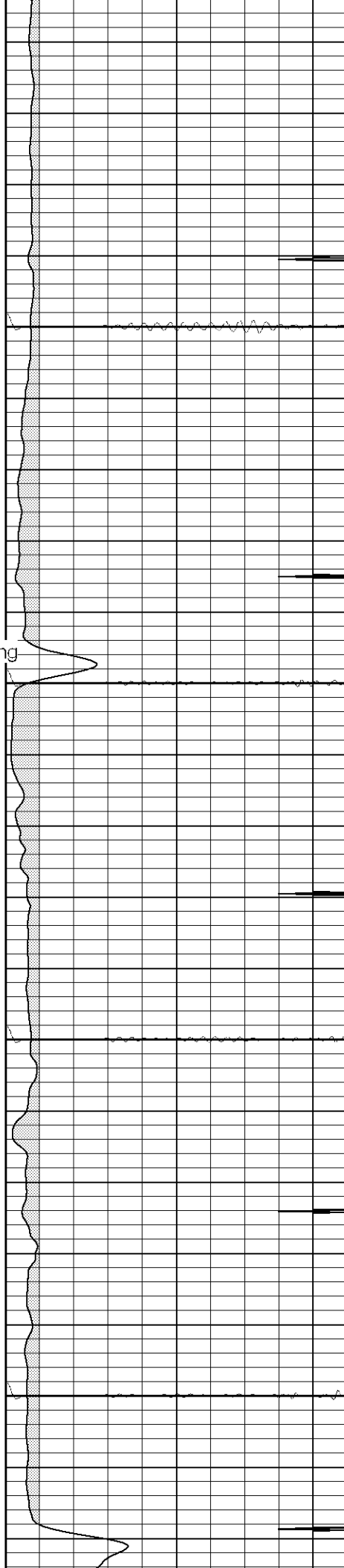
450

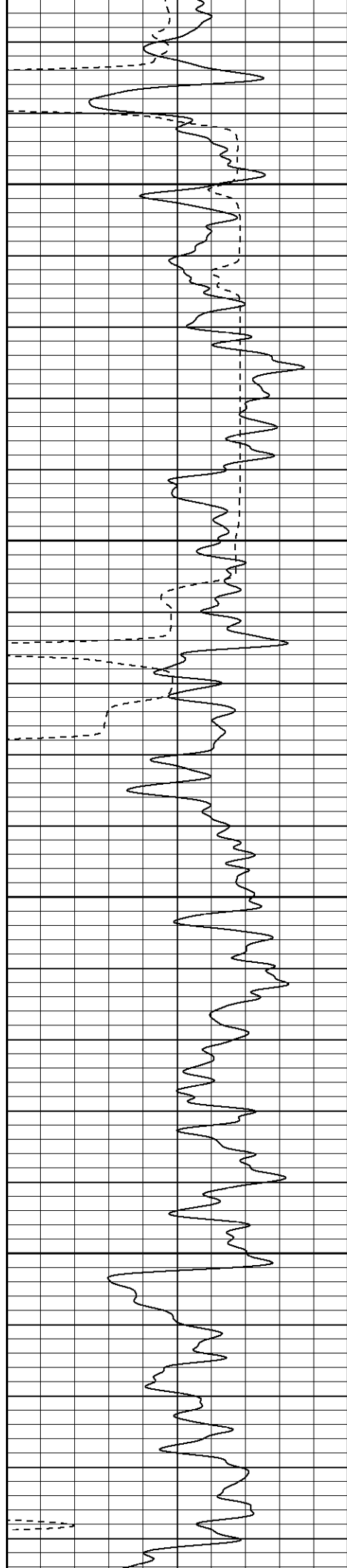
Surface Casing

500

550

600



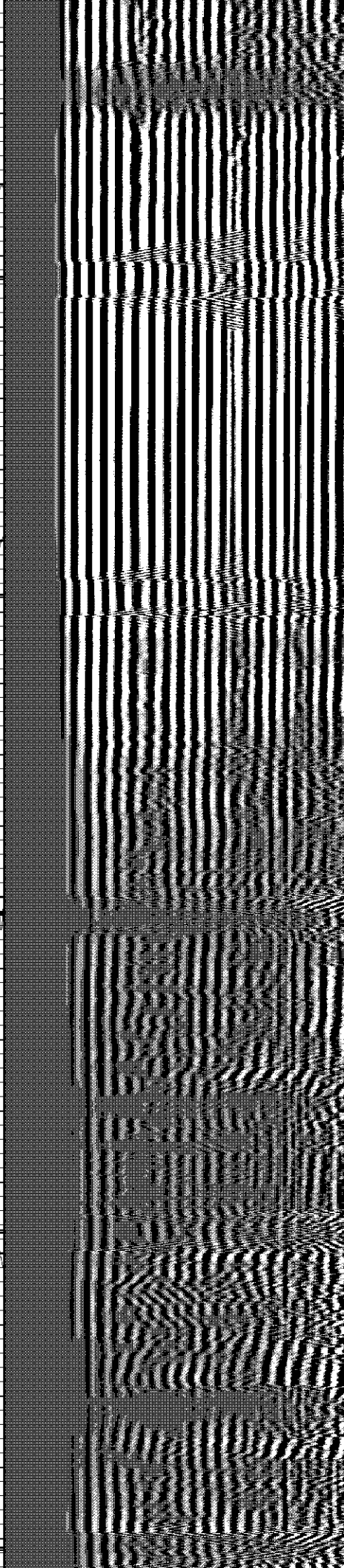
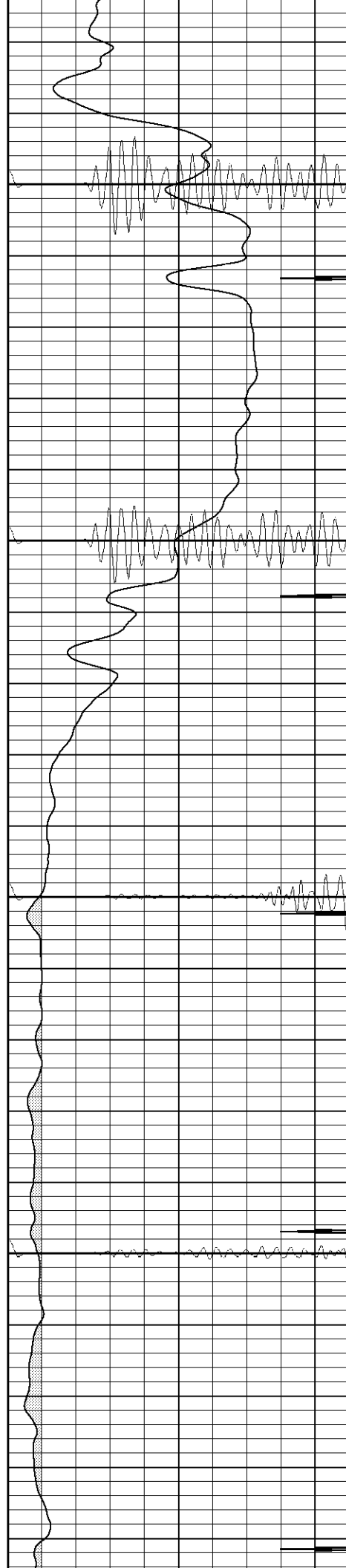


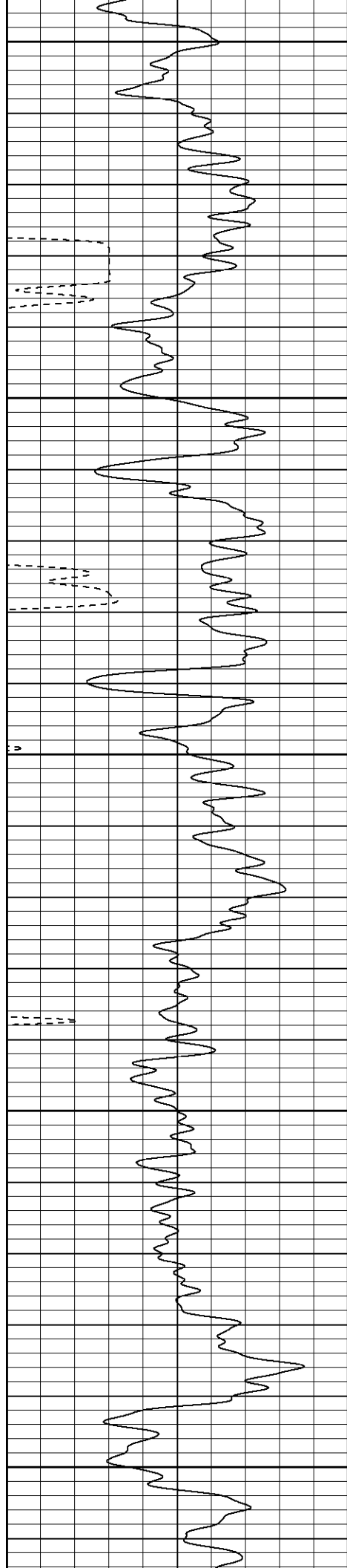
650

700

750

800





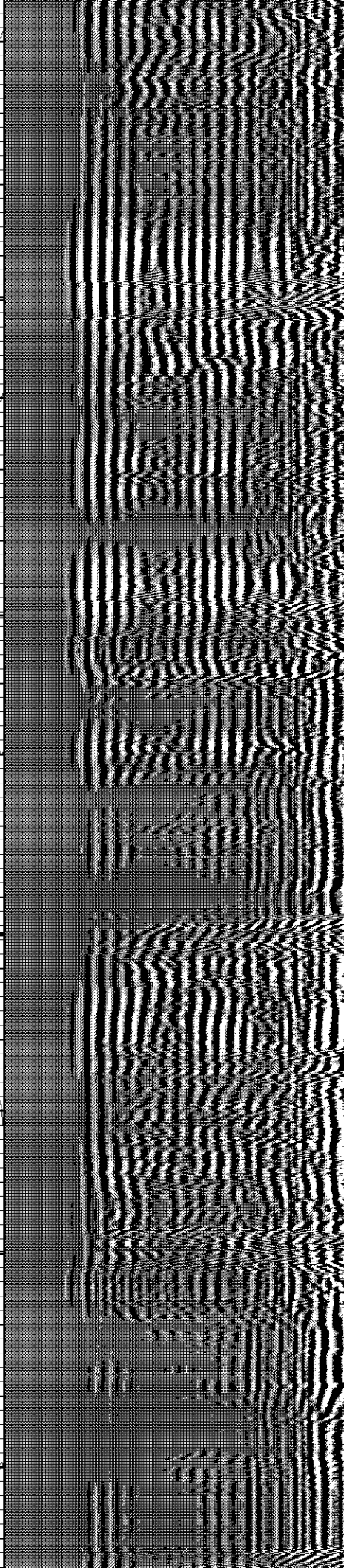
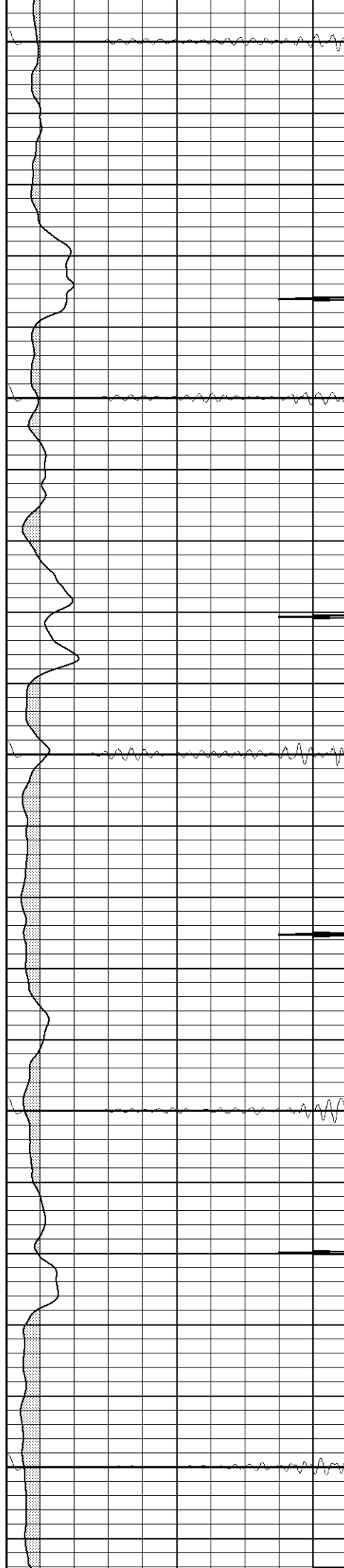
850

900

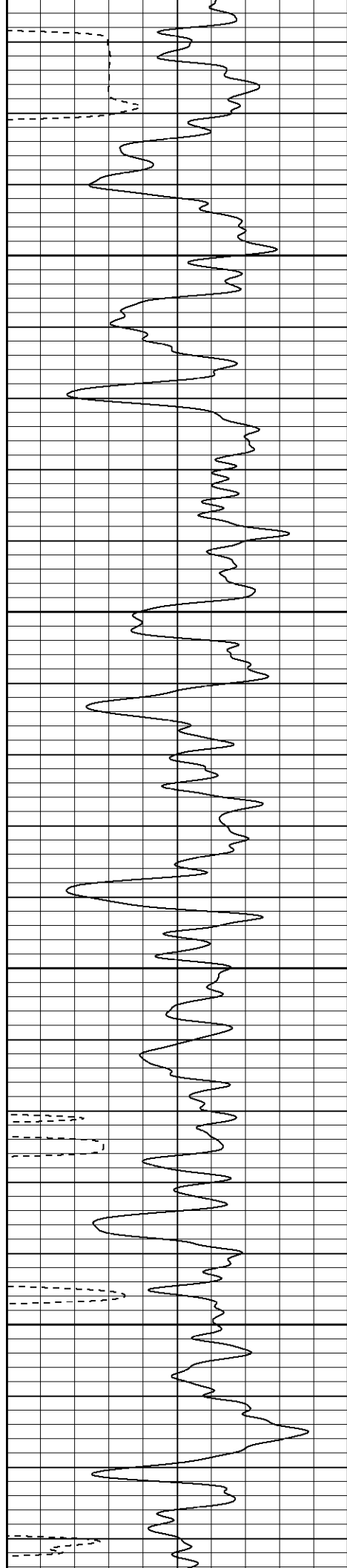
950

1000

1050





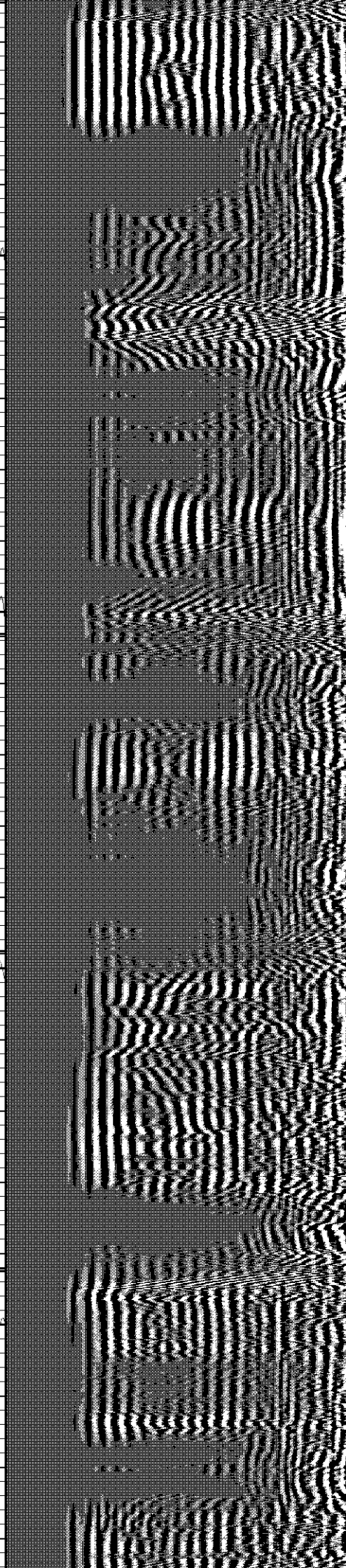
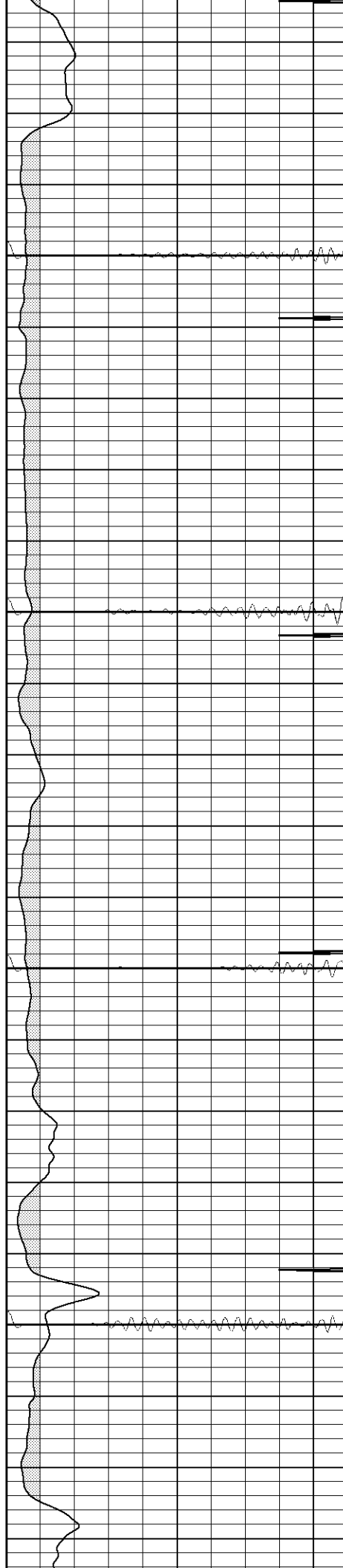


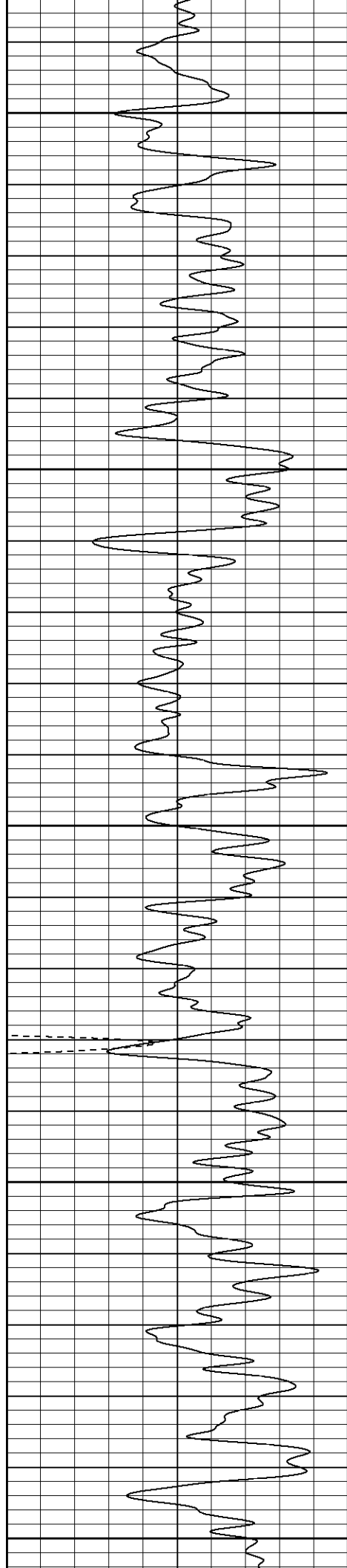
1100

1150

1200

1250





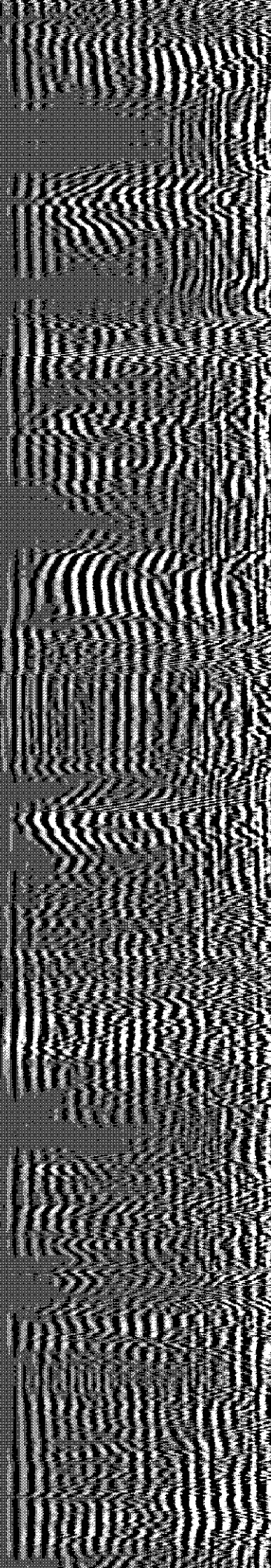
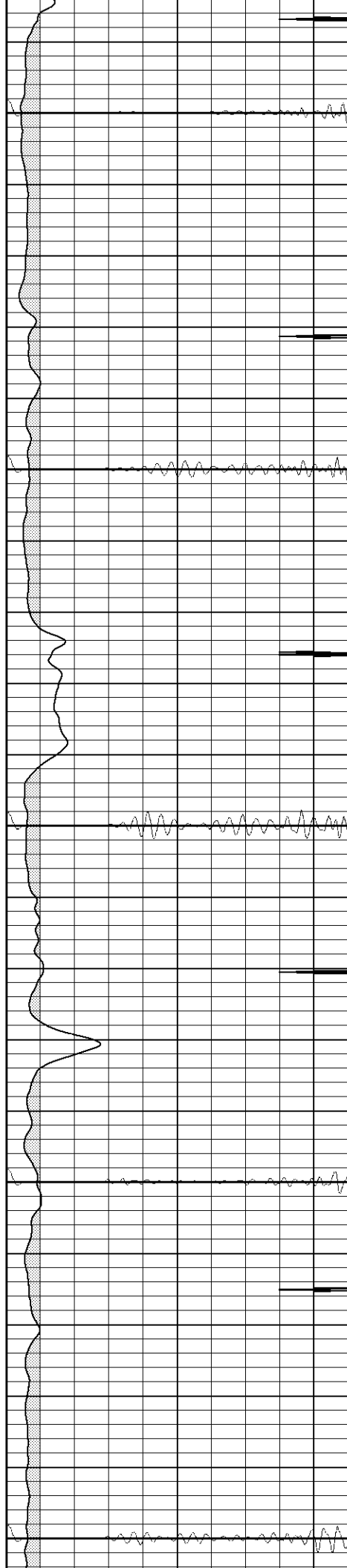
1300

1350

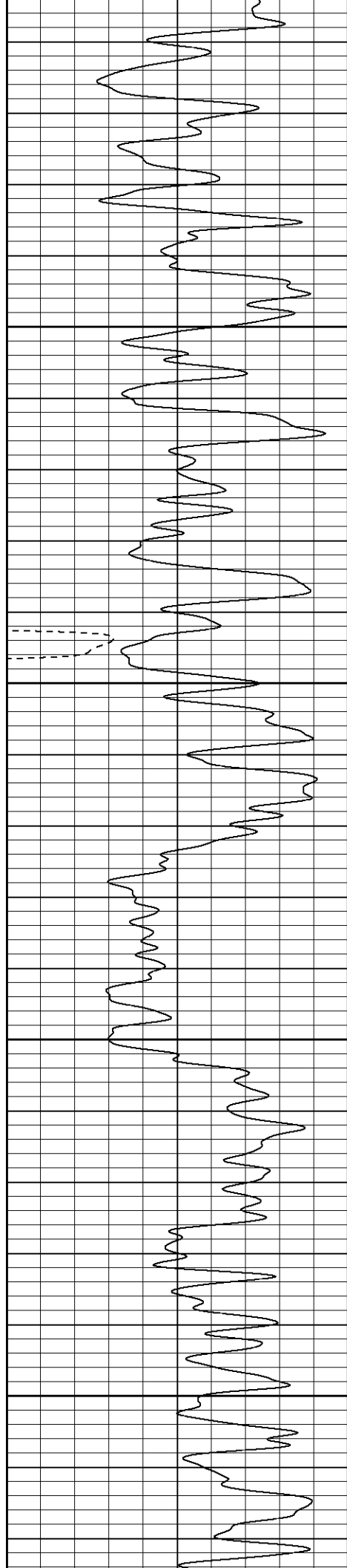
1400

1450

1500





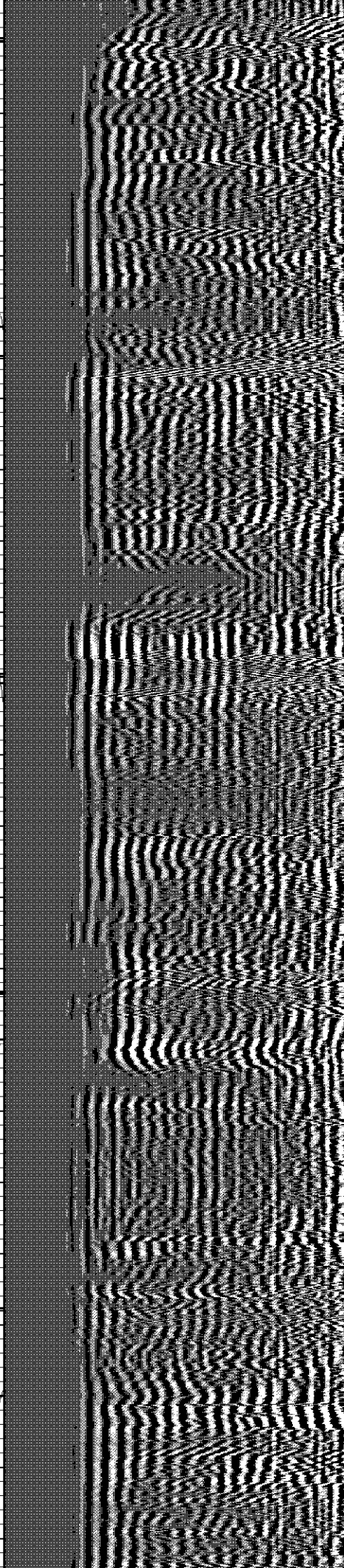
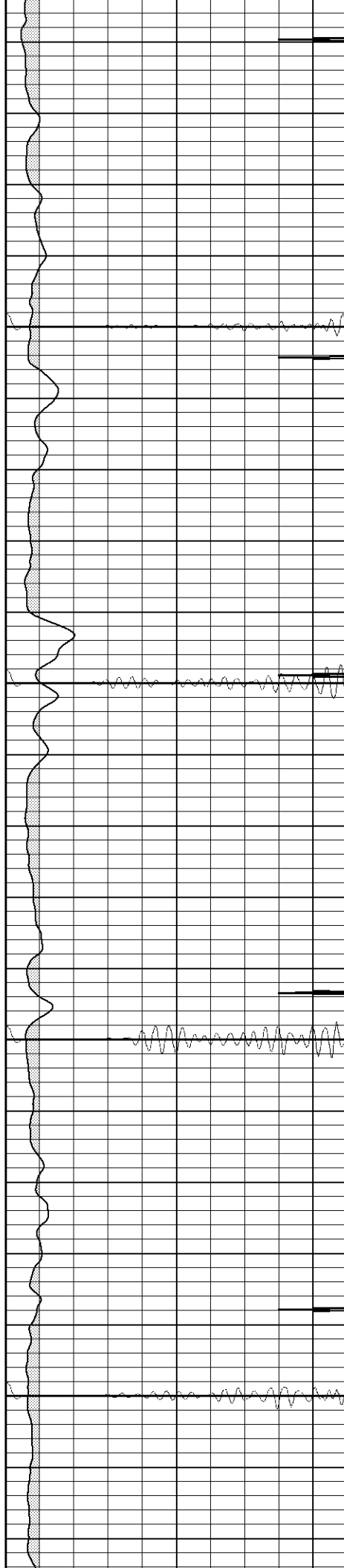


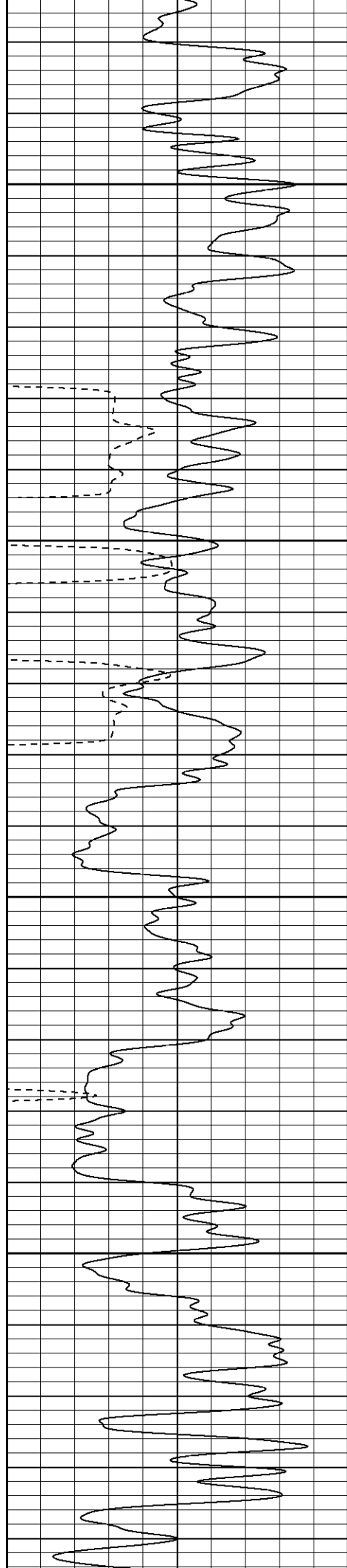
1550

1600

1650

1700



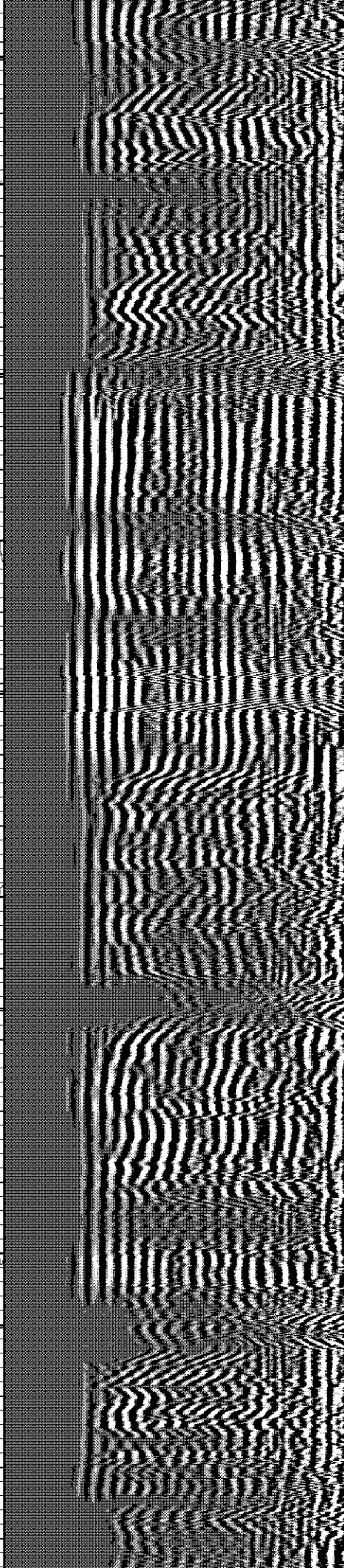
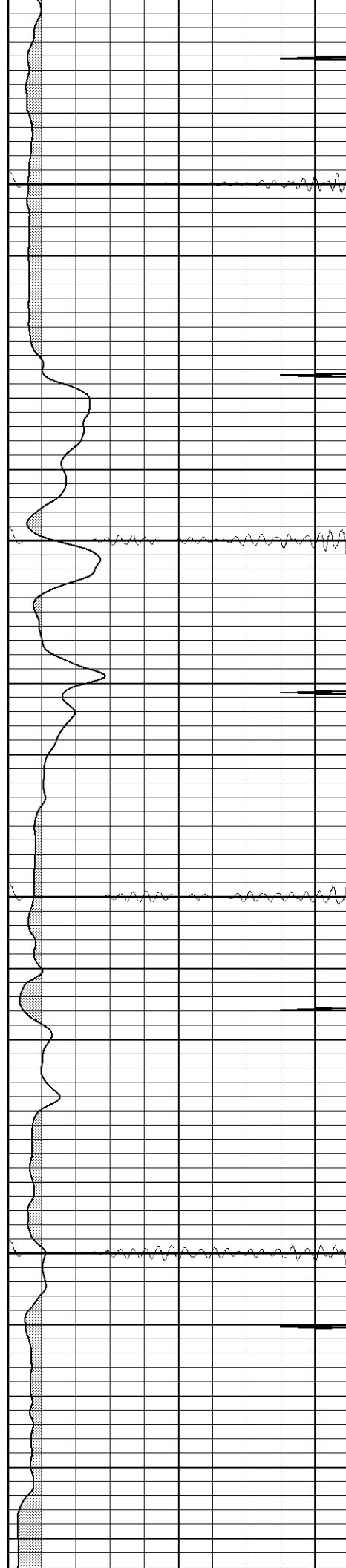


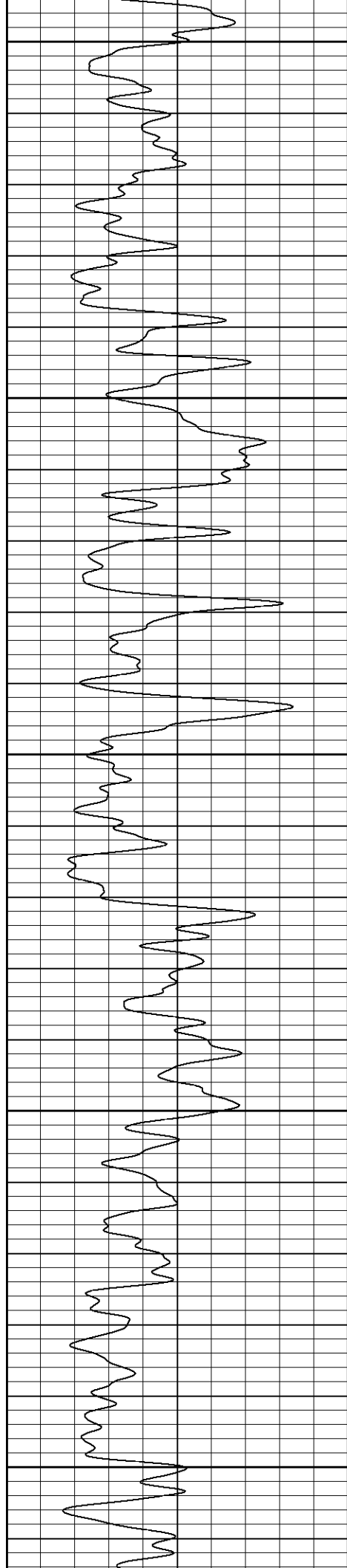
1750

1800

1850

1900





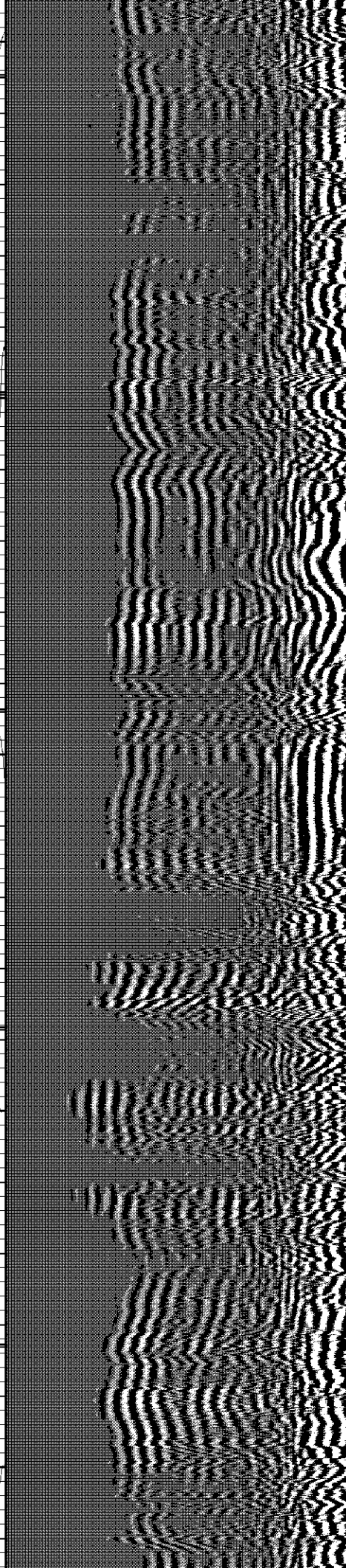
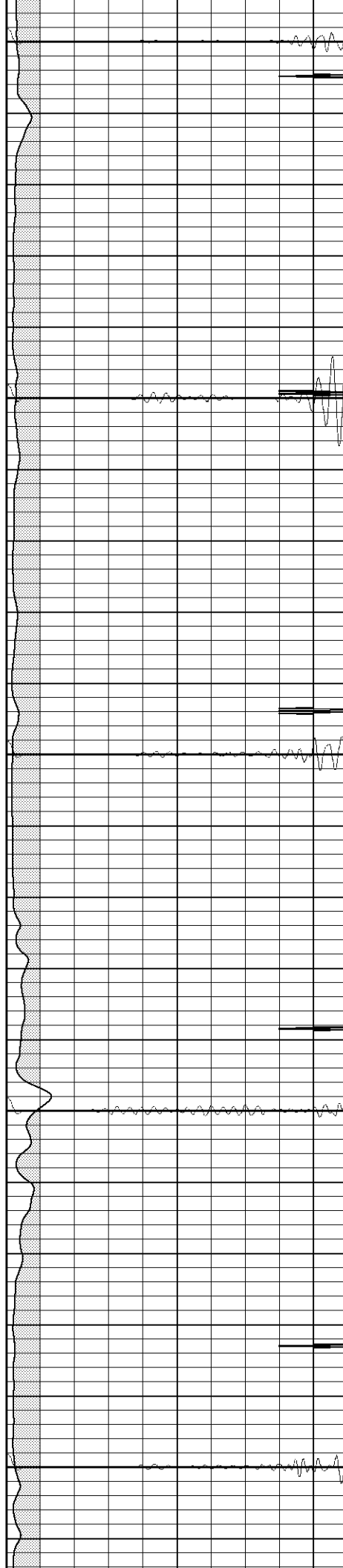
1950

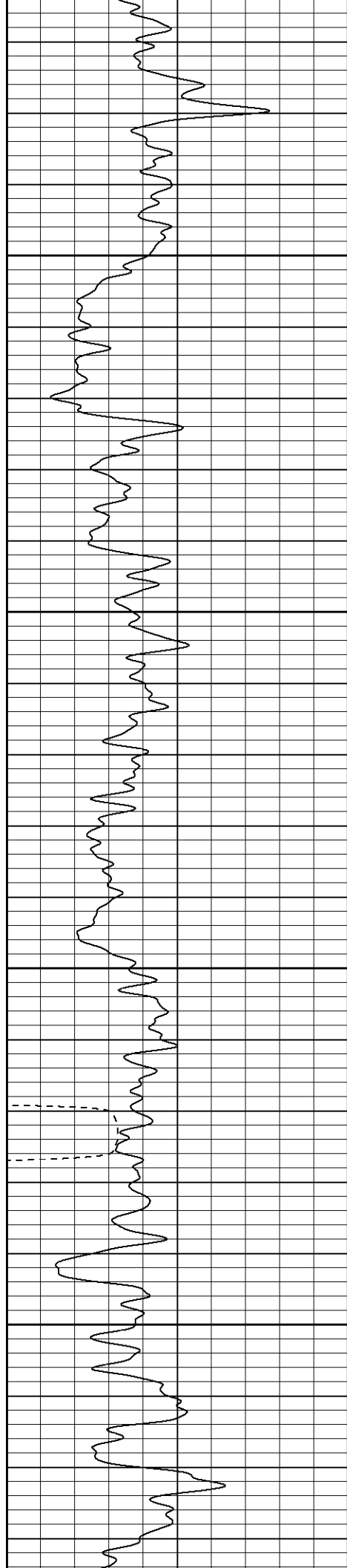
2000

2050

2100

2150



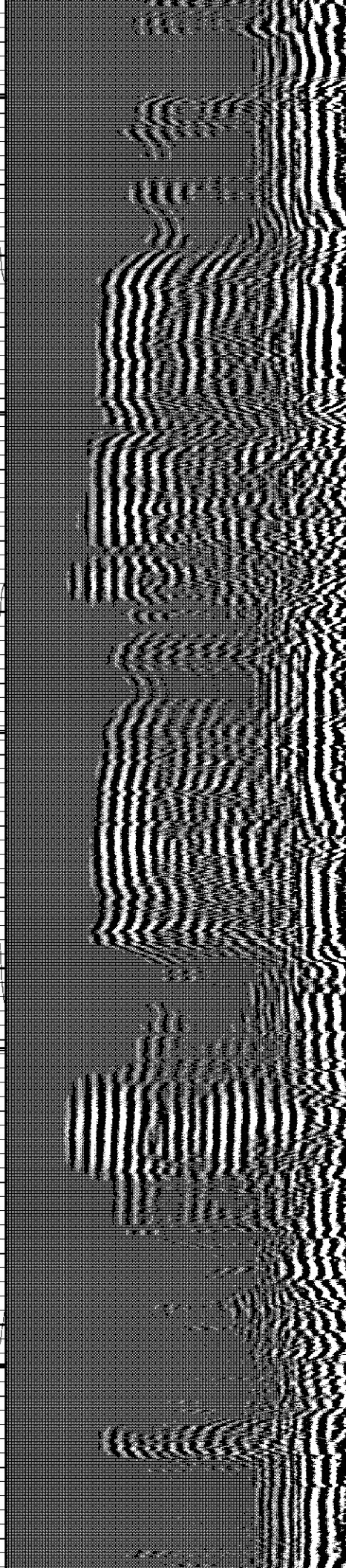
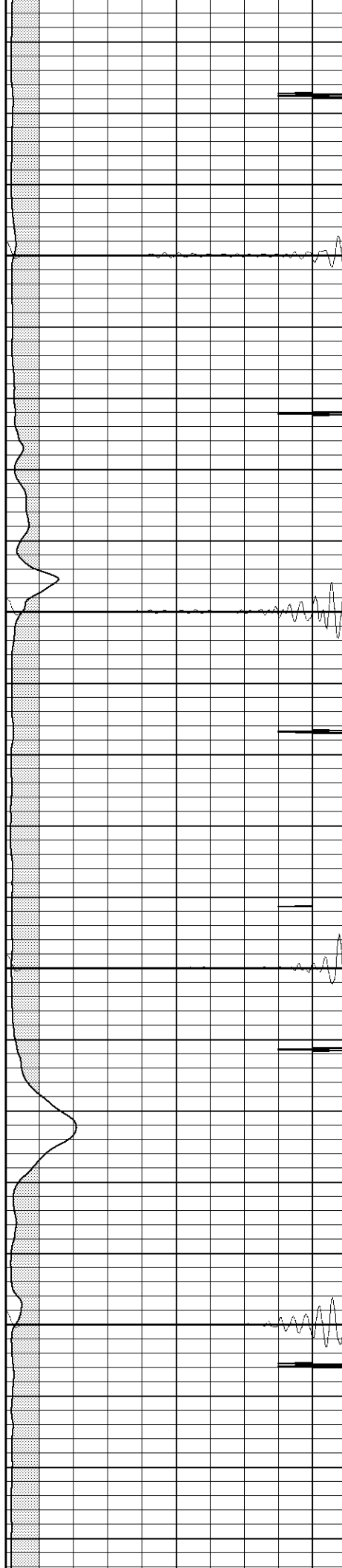


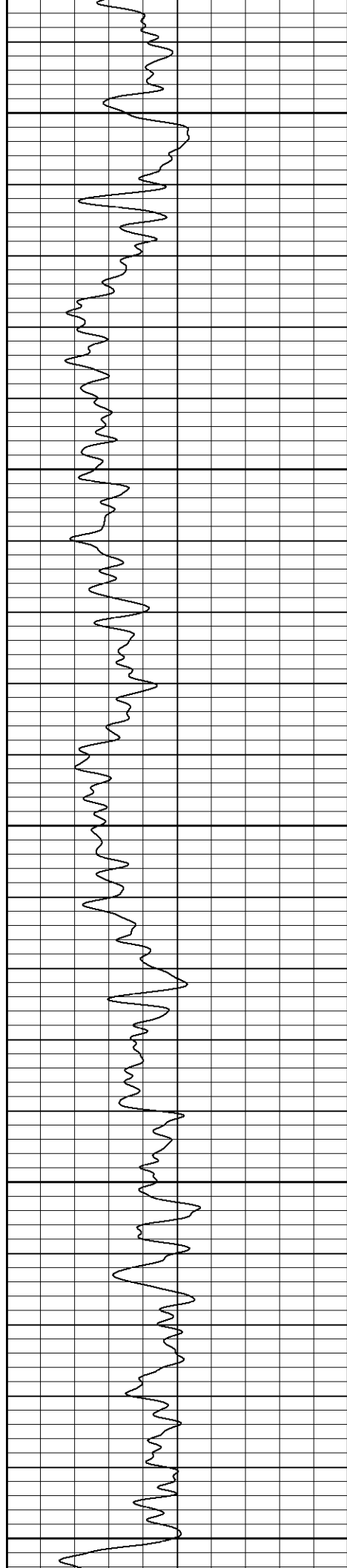
2200

2250

2300

2350





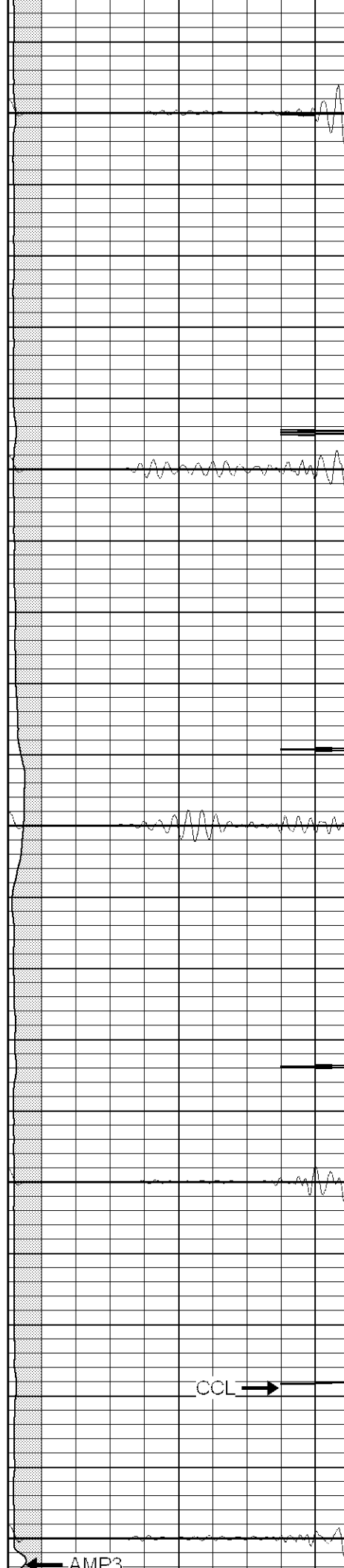
2400

2450

2500

2550

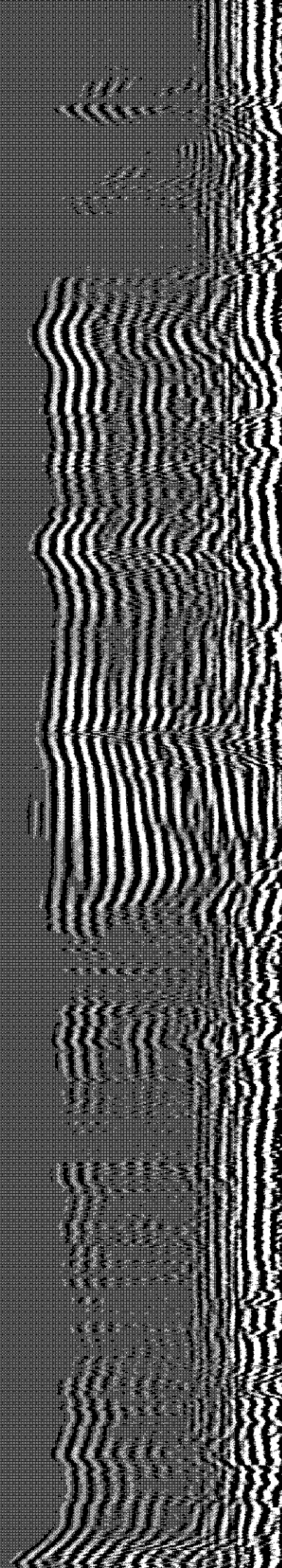
2600



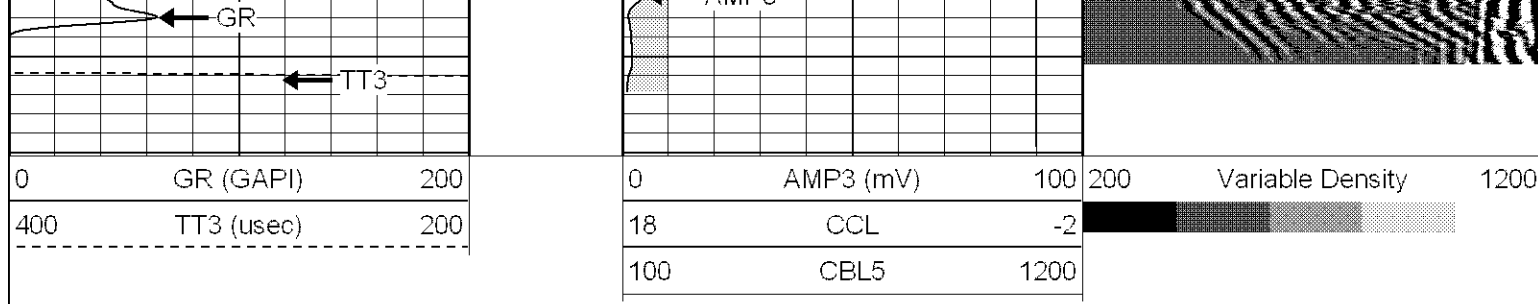
CCL →

← AMP3

CBL5





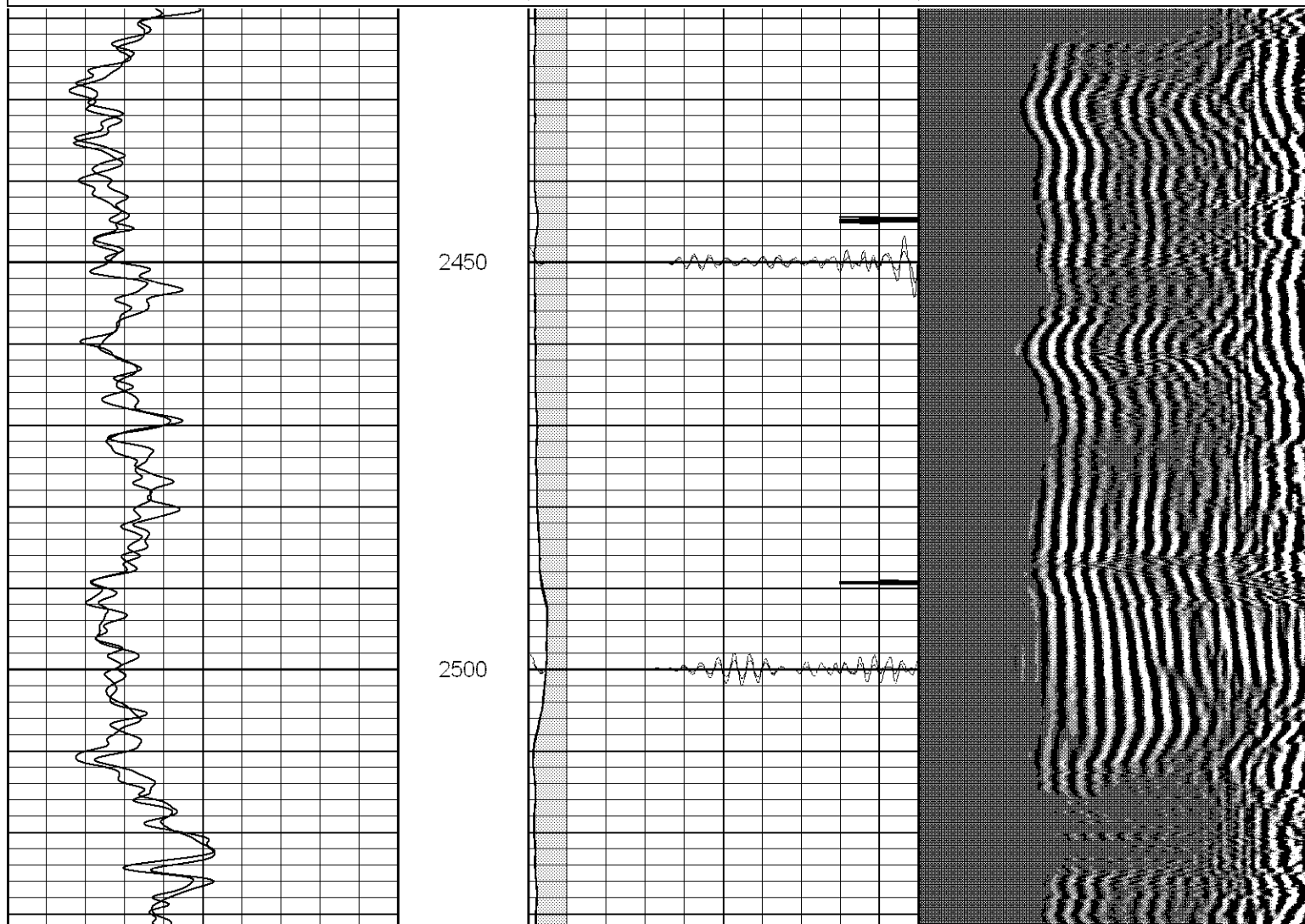
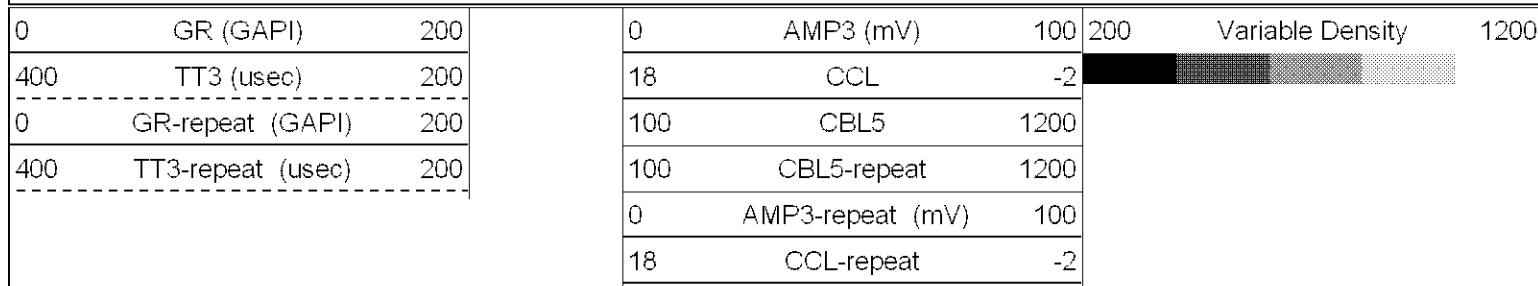


**SUPERIOR**

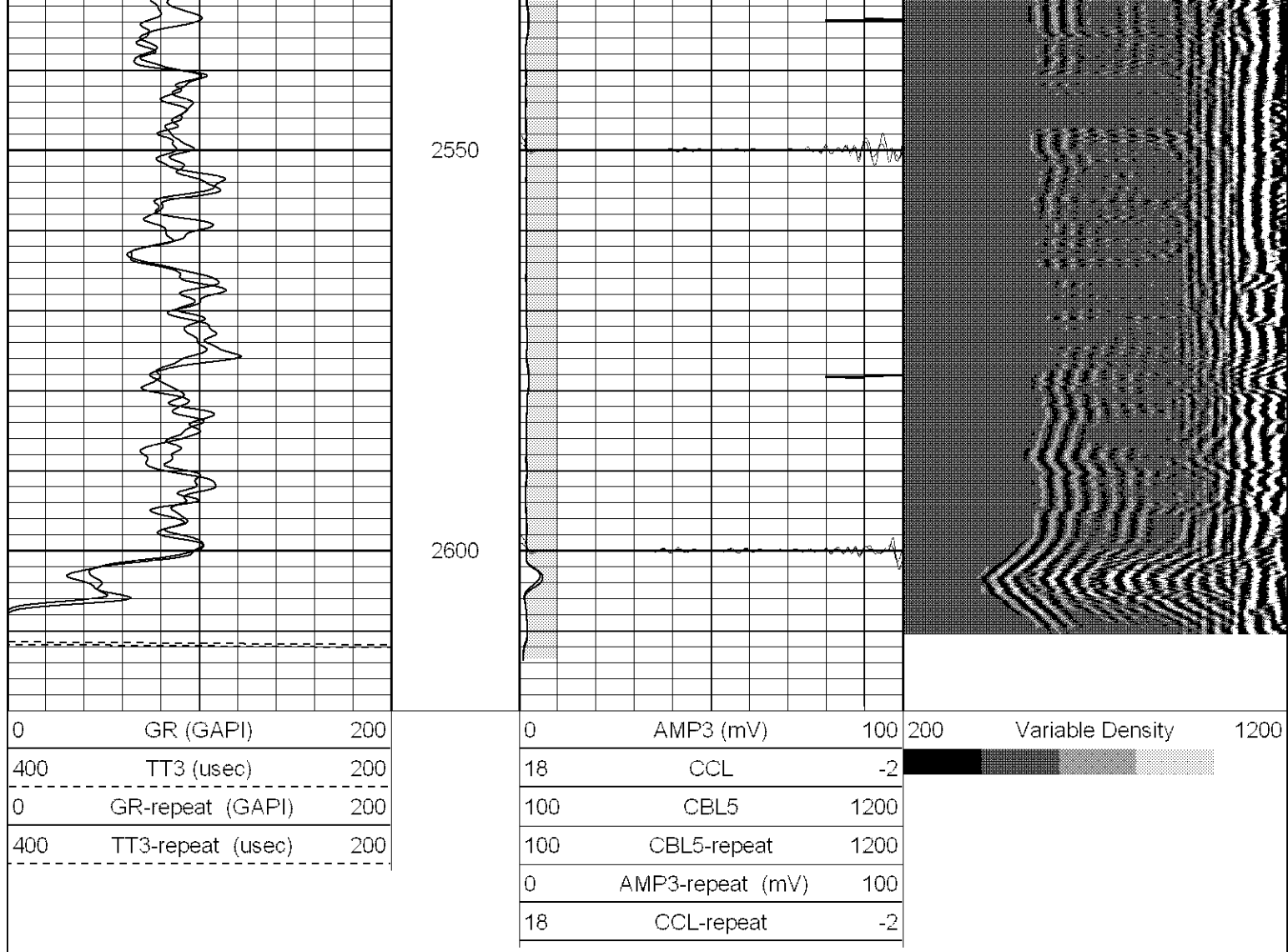
Black Lick, Pa.  
 Mercer, Pa.  
 Wooster, Oh.  
 Cleveland, Ok.  
 Trinidad, Co.

# Repeat Pass

Database File: ac2904091907b.db  
 Dataset Pathname: pass3  
 Presentation Format: cblrt  
 Dataset Creation: Wed Sep 19 10:12:36 2007 by Log Open-Cased 070508  
 Charted by: Depth in Feet scaled 1:240







### Calibration Report

Database File: ac2904091907b.db  
 Dataset Pathname: pass1  
 Dataset Creation: Wed Sep 19 09:57:38 2007 by Log Open-Cased 070508

### Cement Bond Log Calibration Report

Serial Number:	Titan3		
Tool Model:	T3		
Performed:	Tue Sep 04 15:18:52 2007		
Depth:	89.5842	ft	
Casing Diameter:	4.5	in	
	3' Spacing	5' Spacing	
Signal Zero:	1	1	mV
Calibrated Amplitude:	85	81.1961	mV
Reading at Signal Zero:	-0.003125	-0.00280762	V
Reading in Free Pipe:	1.22	1.50664	V
Gain:	68.6765	53.1294	
Offset:	1.21461	1.14917	

### Gamma Ray Calibration Report

Serial Number:	Titan3
Tool Model:	T3
Performed:	Tue Sep 04 15:18:18 2007

