



SUPERIOR
Black Lick, Pa.
Mercer, Pa.
Wooster, Oh.
Cleveland, Ok.
Trinidad, Co.

CEMENT BOND GAMMA RAY

Company XTO Energy Inc.
Well Apache Canyon 29-04
Field Purgatorie River
County Las Animas
State CO

Company XTO Energy Inc.

Well Apache Canyon 29-04

Field Purgatorie River

County Las Animas State CO

Location: API # : 05 071 09281 00

1308' FNL & 564' FWL

SEC 29 TWP 34S RGE 67W

Permanent Datum Ground Level Elevation 8130'
Log Measured From Ground Level
Drilling Measured From Ground Level

Other Services
TEMP
Elevation
K.B. -----
D.F. -----
G.L. 8130'

Date	8/28/07	one		
Run Number		2725'		
Depth Driller		2621'		
Bottom Logged Interval		2617'		
Top Log Interval		Surf.		
Open Hole Size		7 7/8"		
Type Fluid		water		
Density / Viscosity		///		
Max. Recorded Temp.		131F		
Estimated Cement Top		696'		
Time Well Ready		ROA		
Time Logger on Bottom		11:05		
Equipment Number		0703		
Location		Trinidad		
Recorded By		Worley		
Witnessed By				
Borehole Record				
Run Number	Bit	From	To	Size
				Weight
				From
				To
Casing Record	Size		Wgt/Ft	Top
Surface String	8 5/8"			00
Prot. String				
Production String	5 1/2"			00
Liner				NA

<<< Fold Here >>>

All interpretations are opinions based on inferences from electrical or other measurements and we cannot and do not guarantee the accuracy or correctness of any interpretation, and we shall not, except in the case of gross or willful negligence on our part, be liable or responsible for any loss, costs, damages, or expenses incurred or sustained by anyone resulting from any interpretation made by any of our officers, agents or employees. These interpretations are also subject to our general terms and conditions set out in our current Price Schedule.

Comments

First Bosque entrance, left on Little Bingham, at top take second right,
first right, drive thru on location, first left to location.



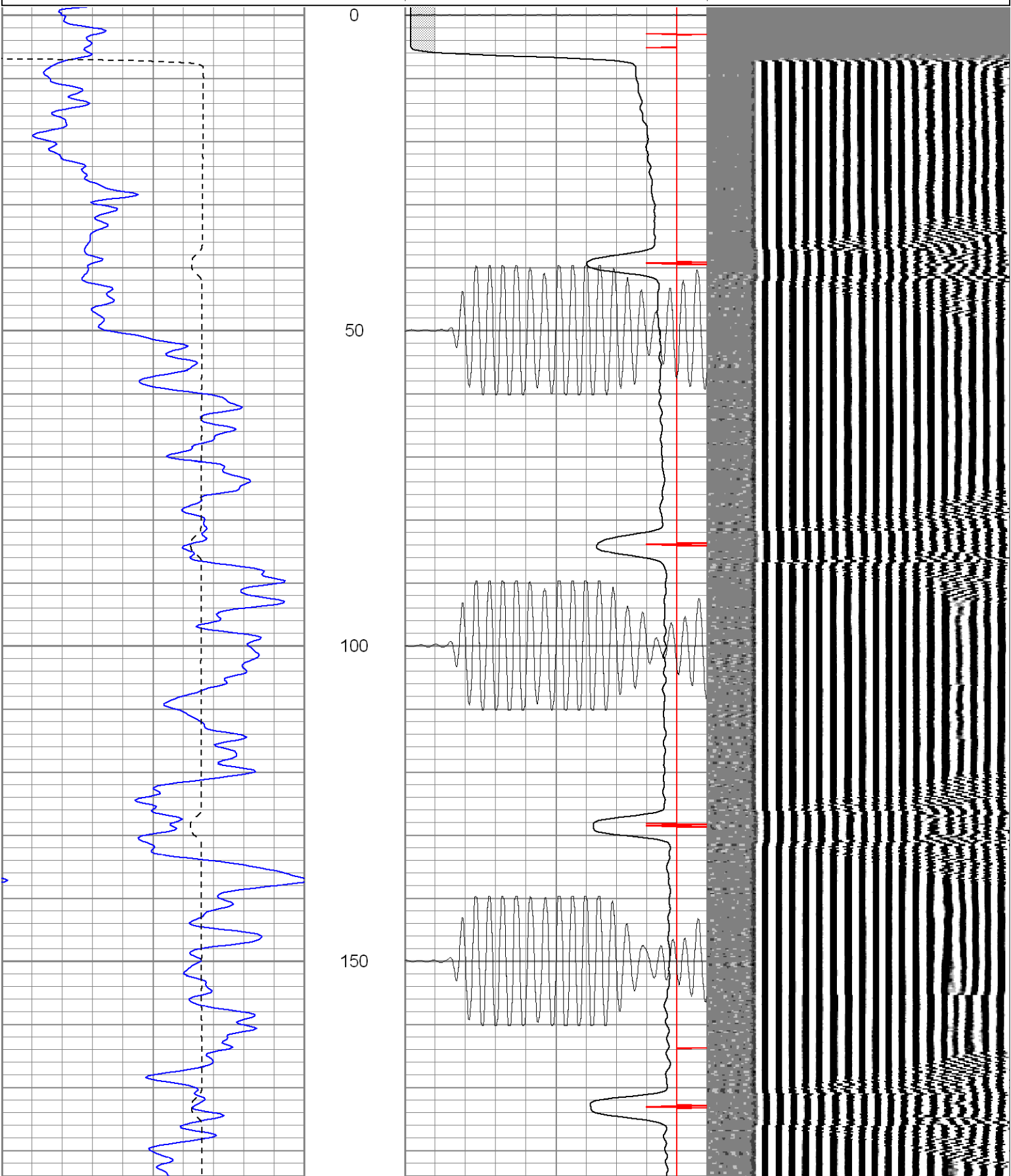
SUPERIOR

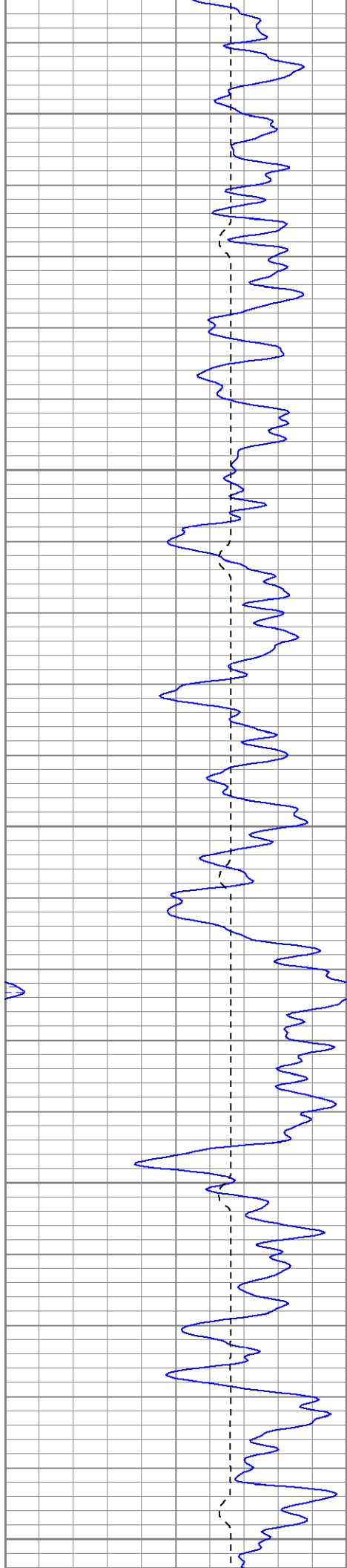
Black Lick, Pa.
Mercer, Pa.
Wooster, Oh.
Cleveland, Ok.
Trinidad, Co.

Main Pass

Database File: ac29-04b82807.db
Dataset Pathname: pass4.1
Presentation Format: cblrt
Dataset Creation: Tue Aug 28 12:54:13 2007 by Calc Std Casedhole 07051
Charted by: Depth in Feet scaled 1:240

0	GR (GAPI)	200	0	AMP3 (mV)	100	200	CBL5	1200
400	TT3 (usec)	200	18	CCL	-2			
			200	CBL5	1200			





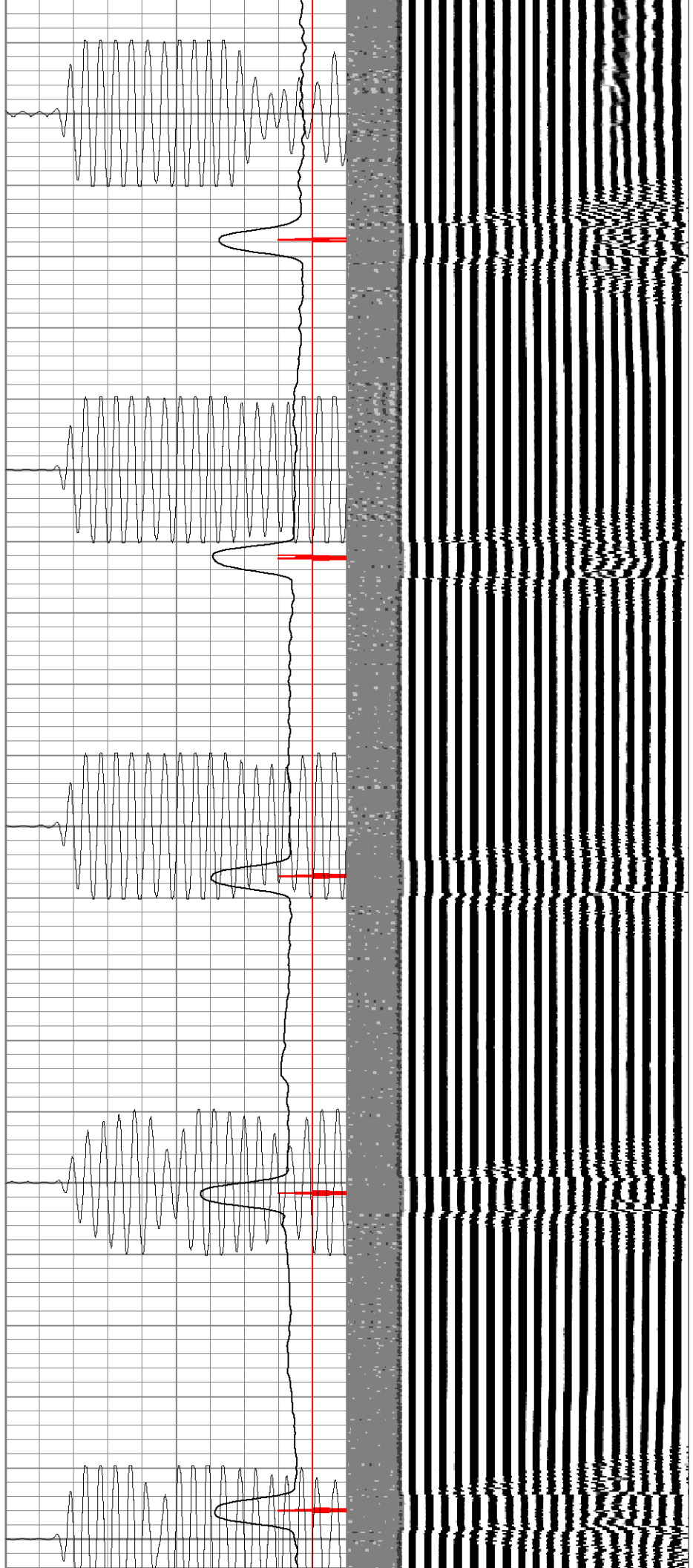
200

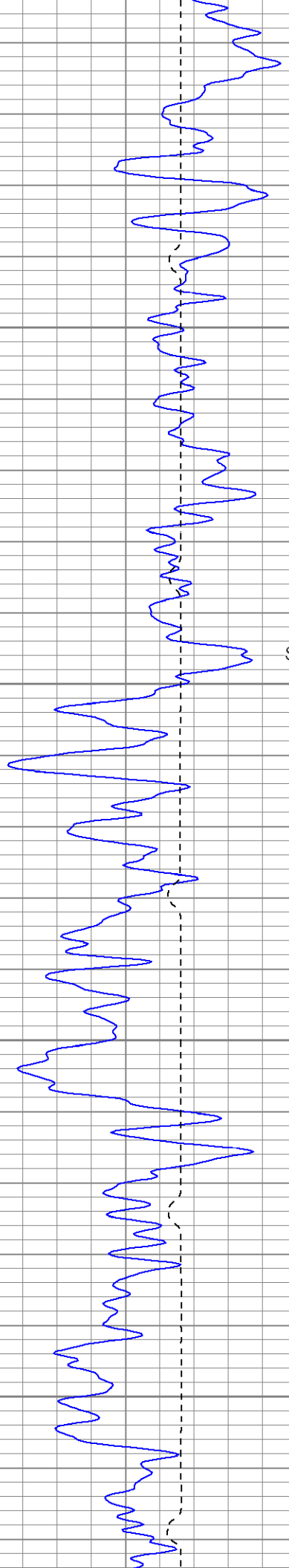
250

300

350

400





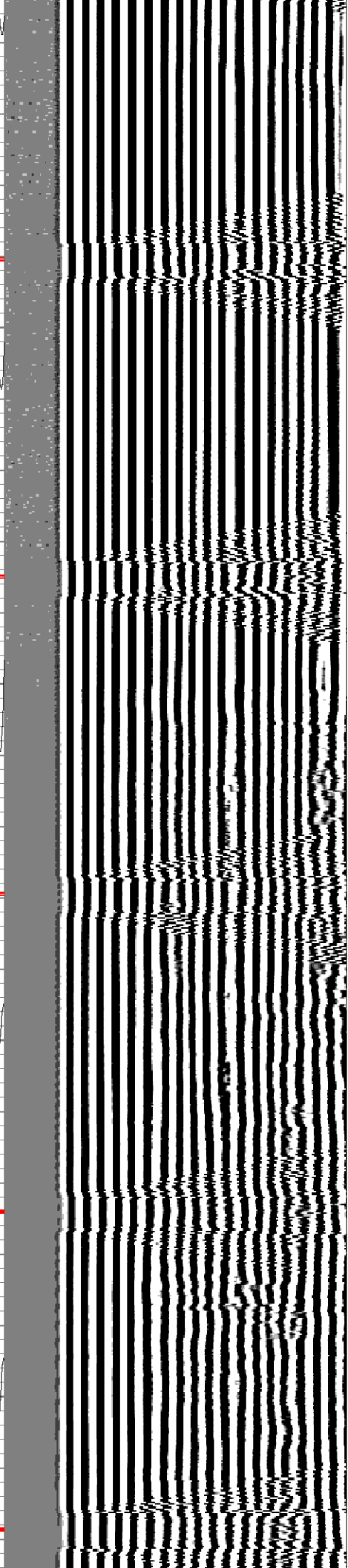
Surface Casing

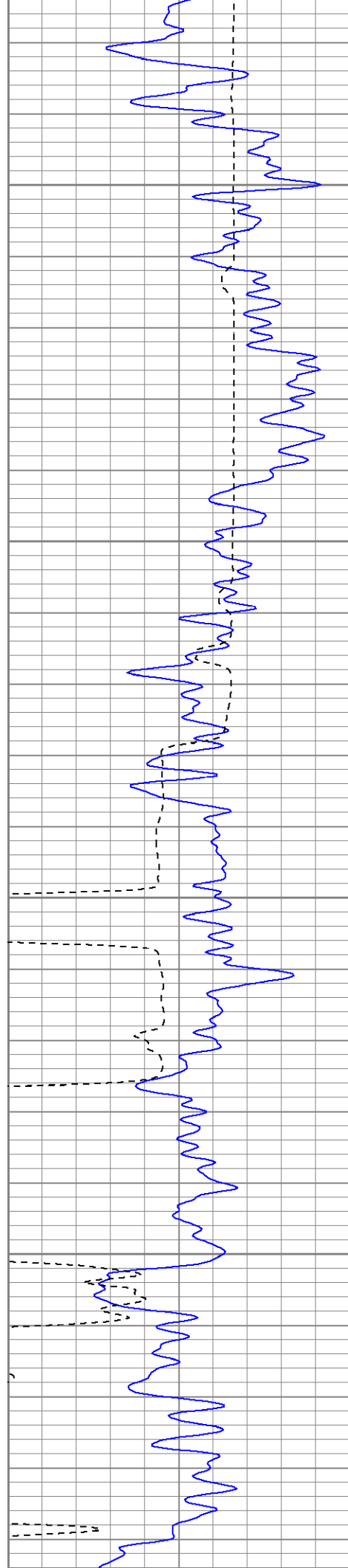
450

500

550

600





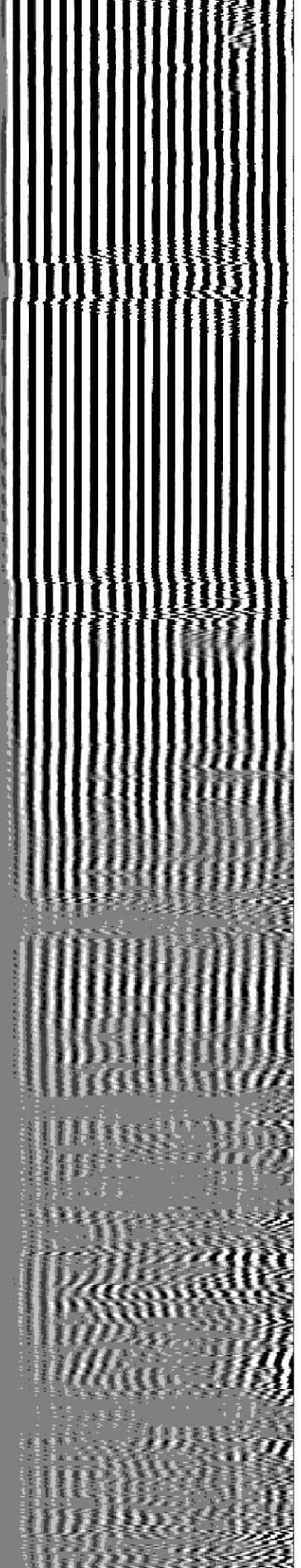
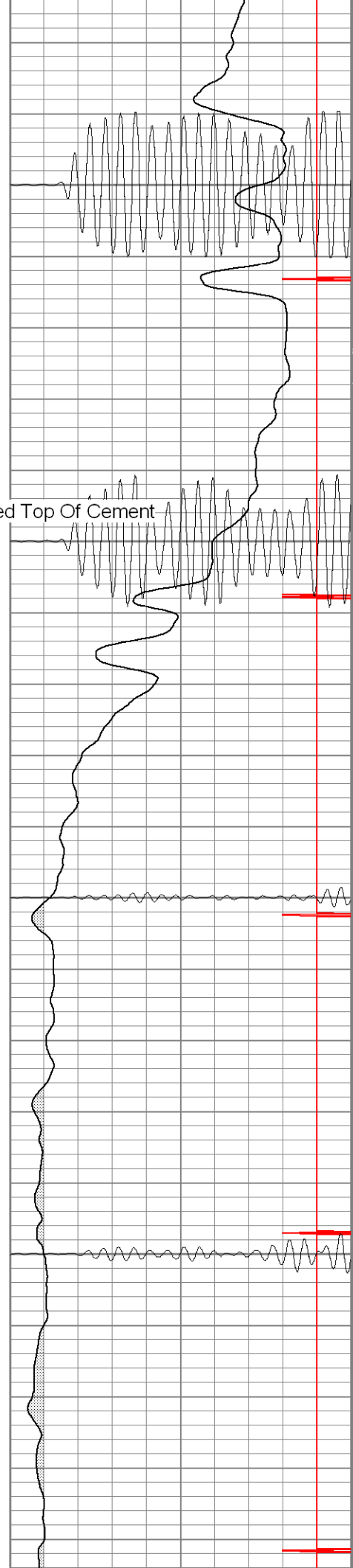
650

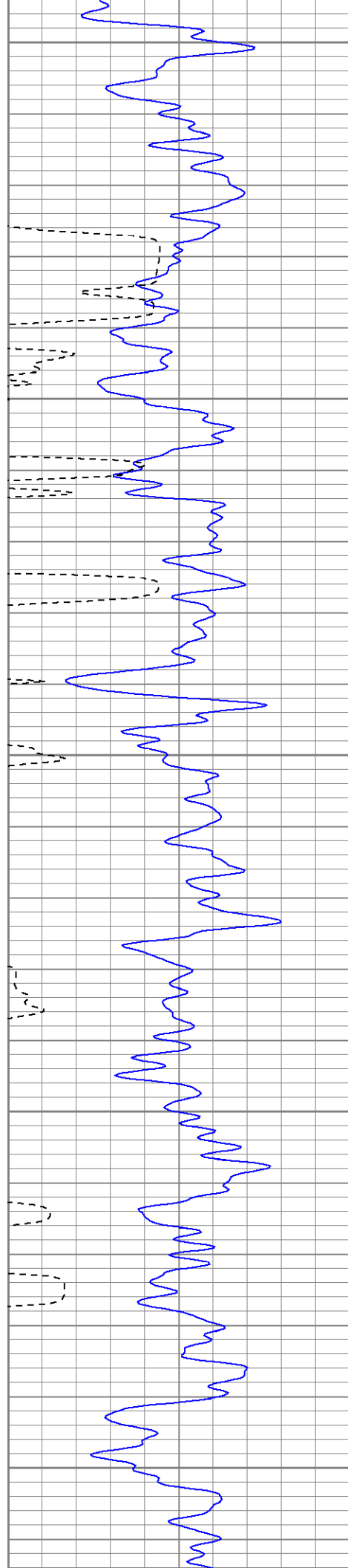
Estimated Top Of Cement

700

750

800





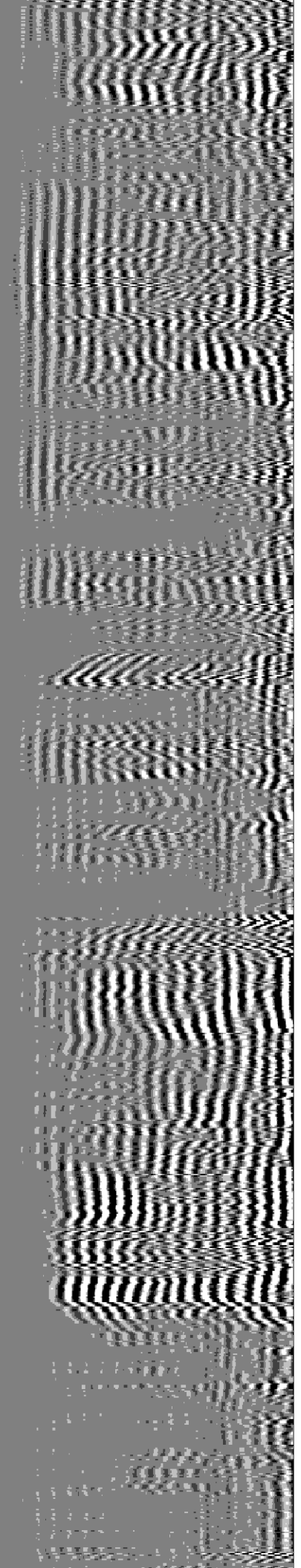
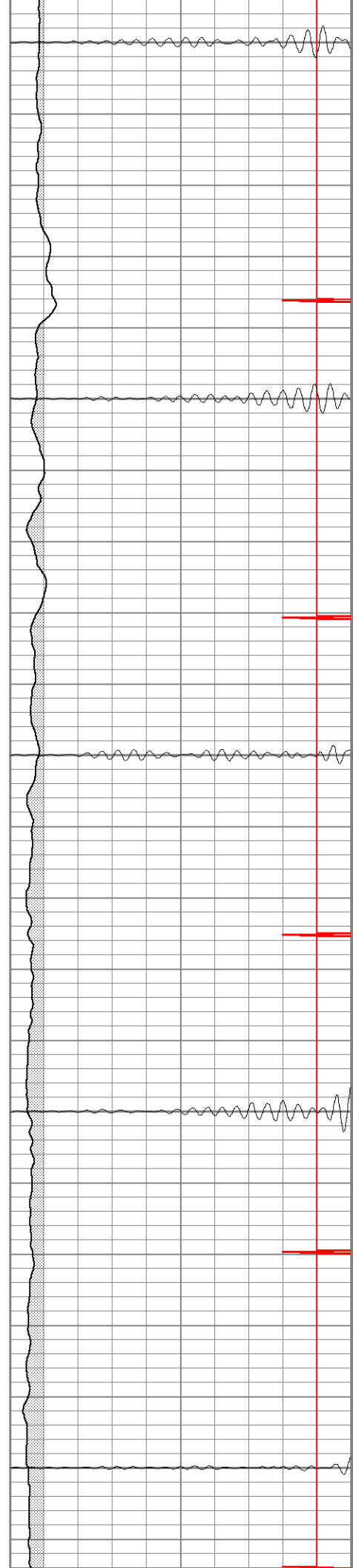
850

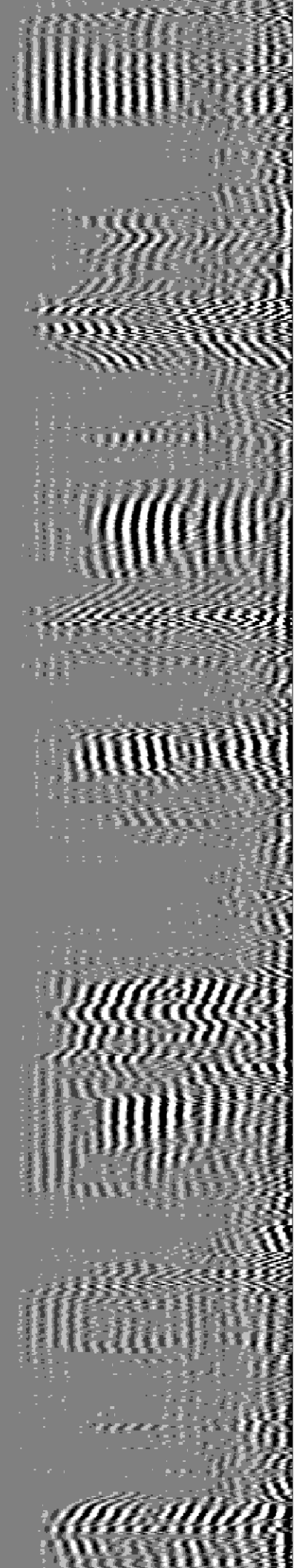
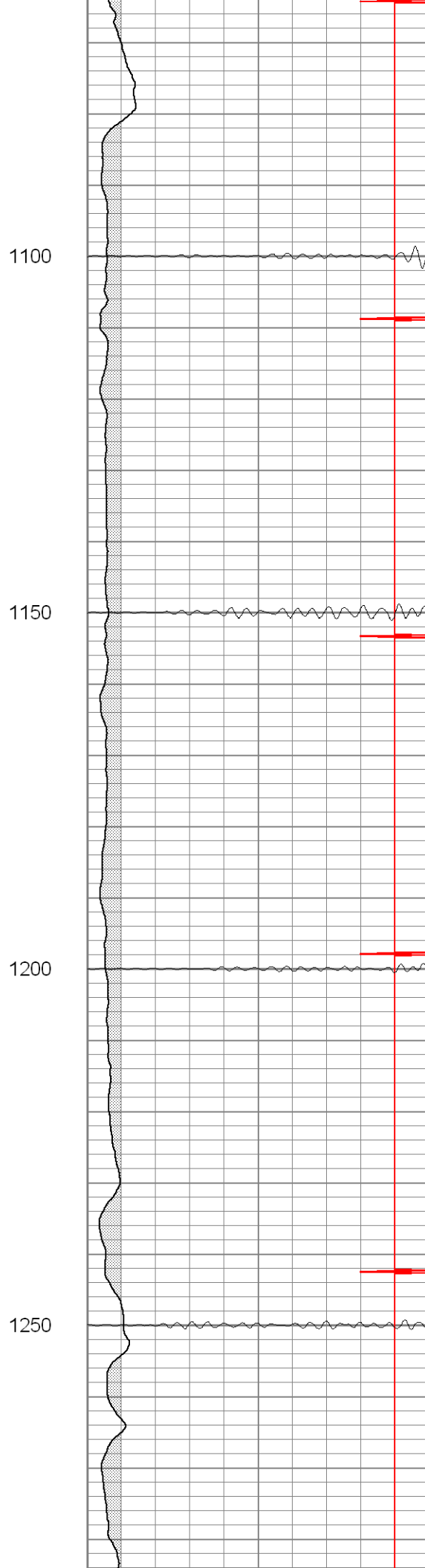
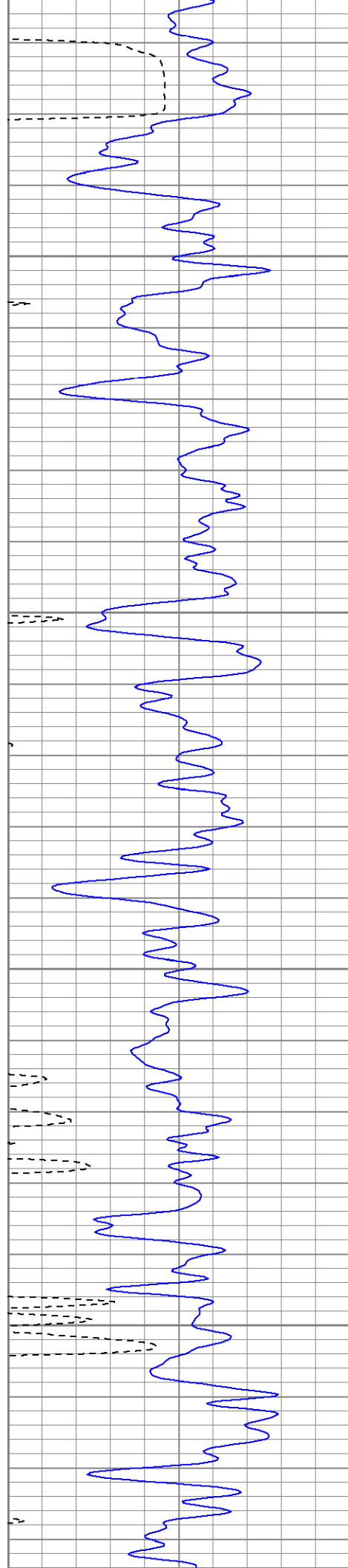
900

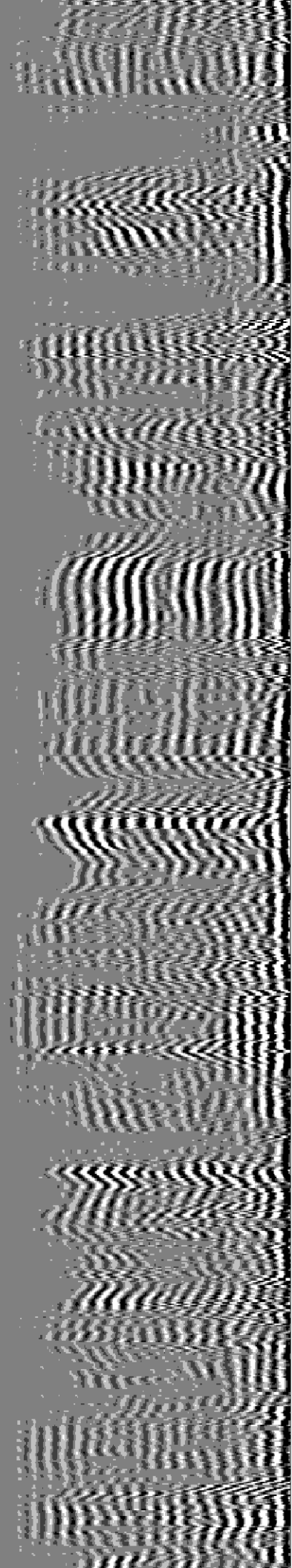
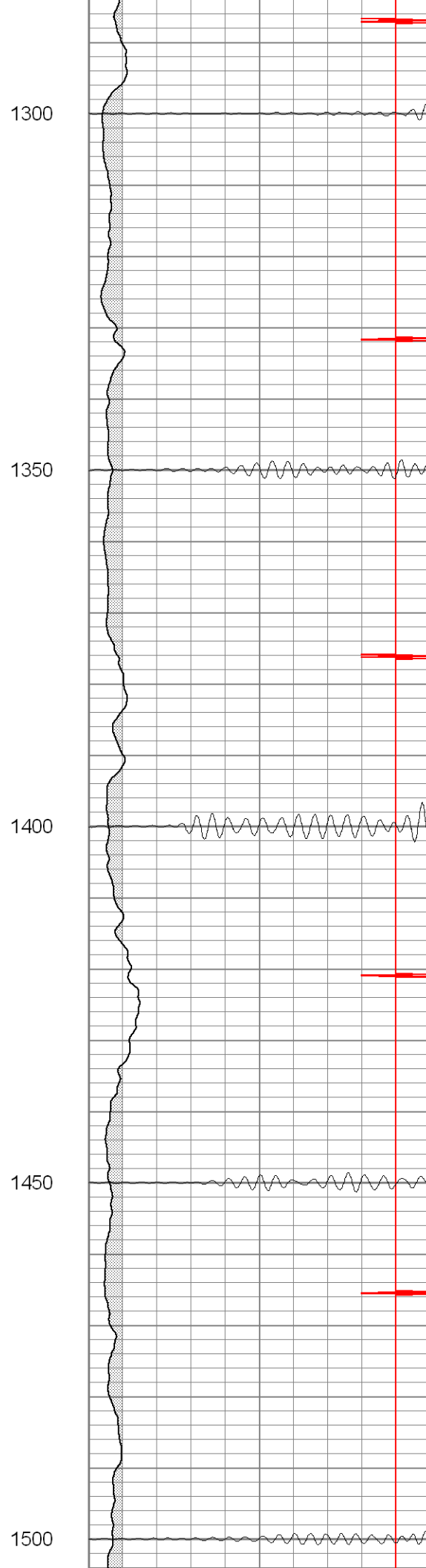
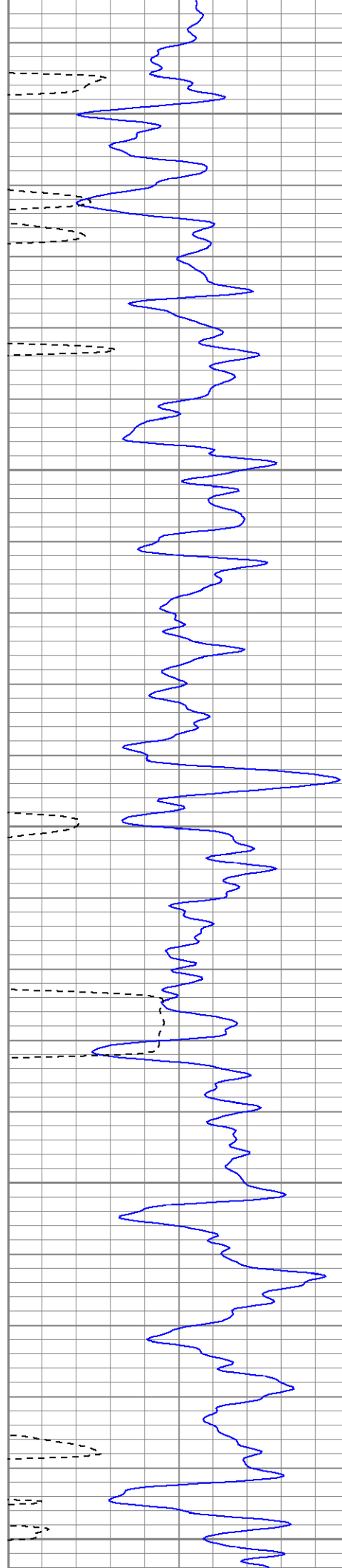
950

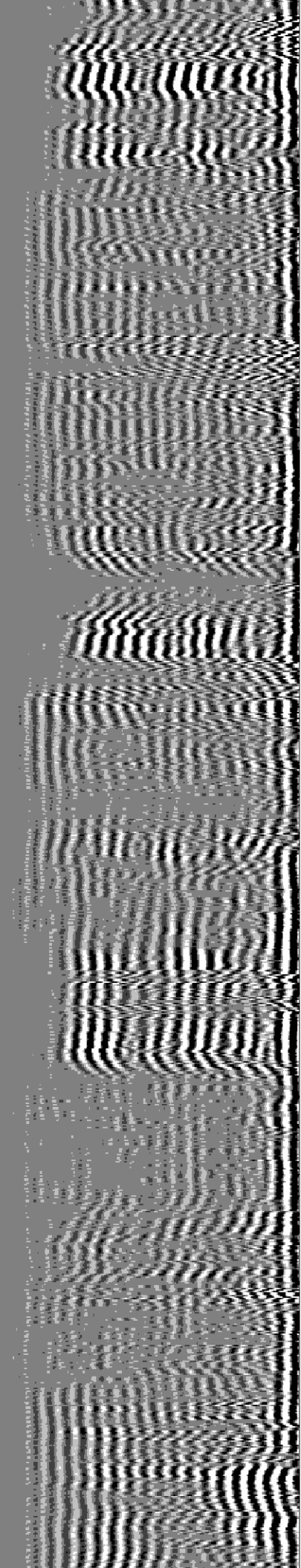
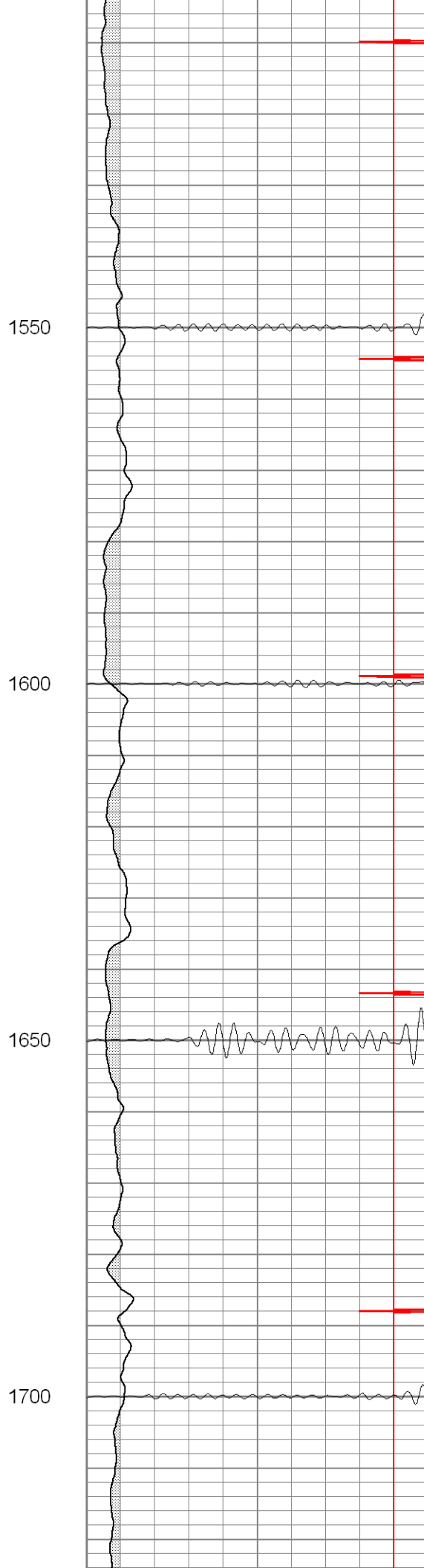
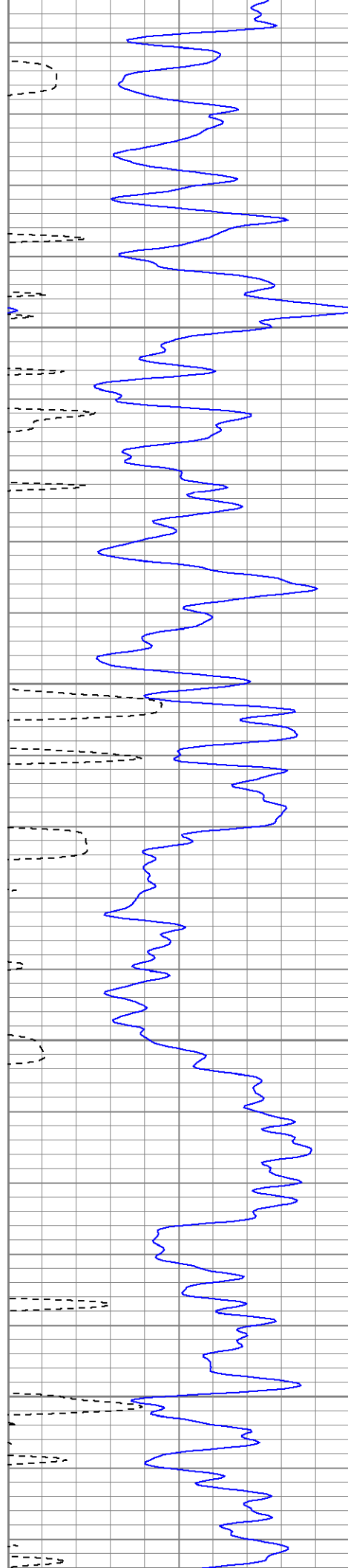
1000

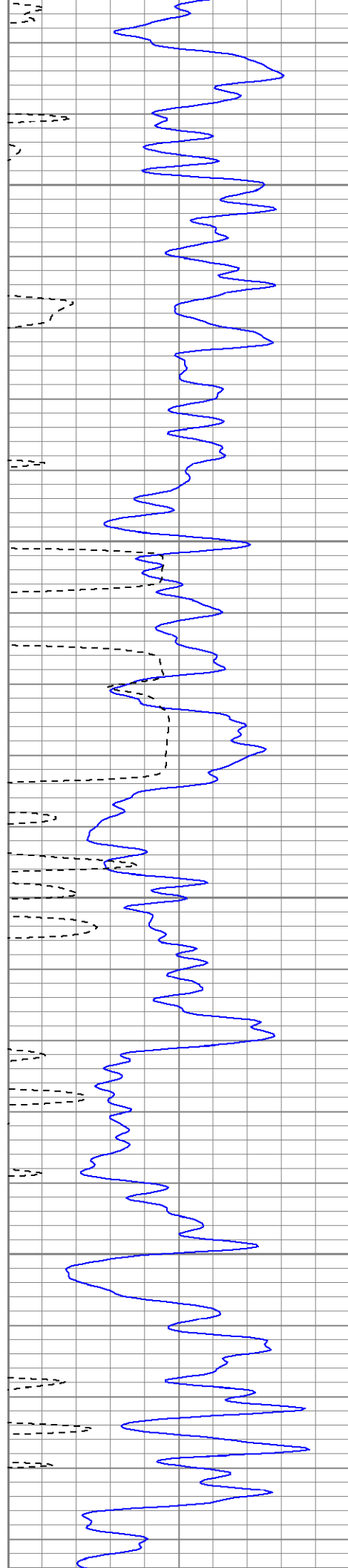
1050









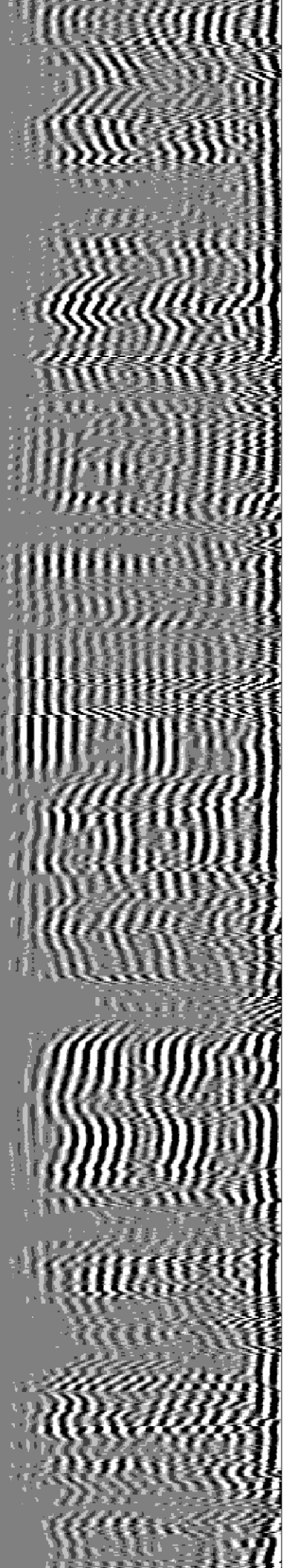


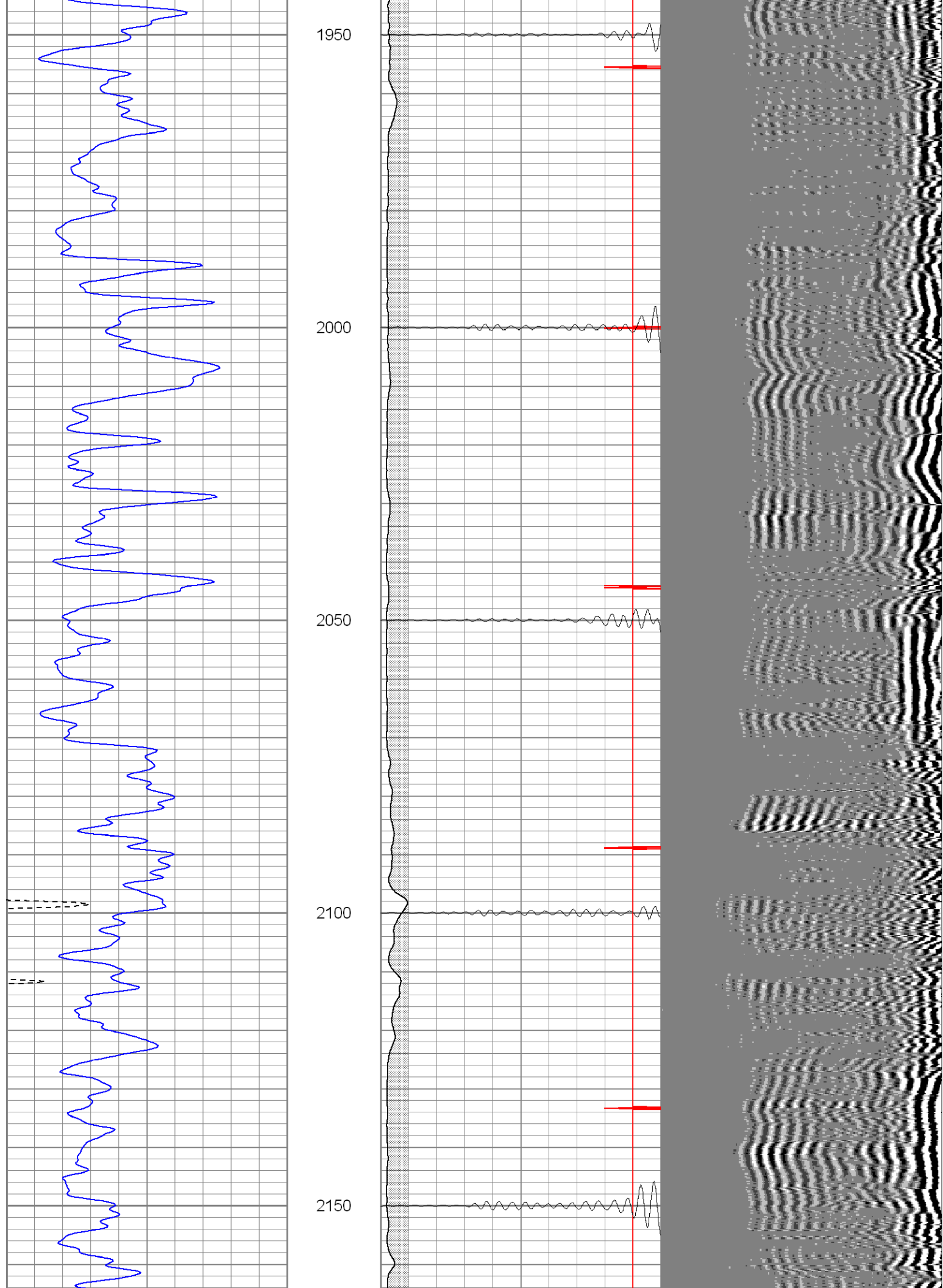
1750

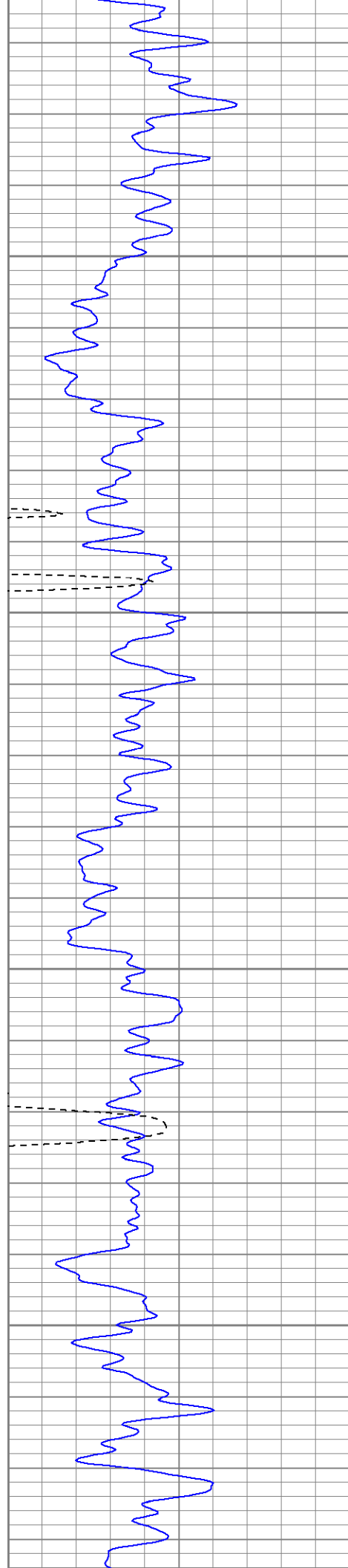
1800

1850

1900





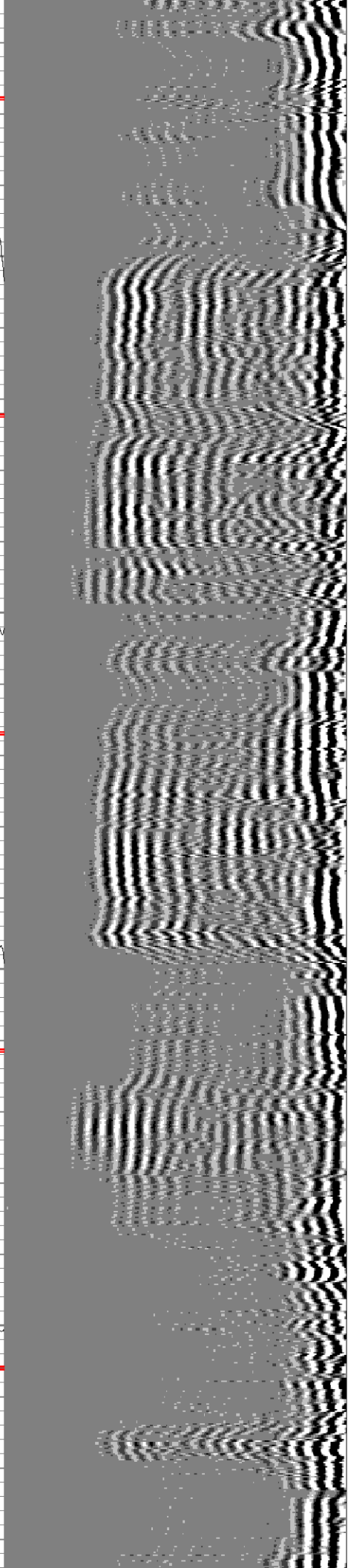
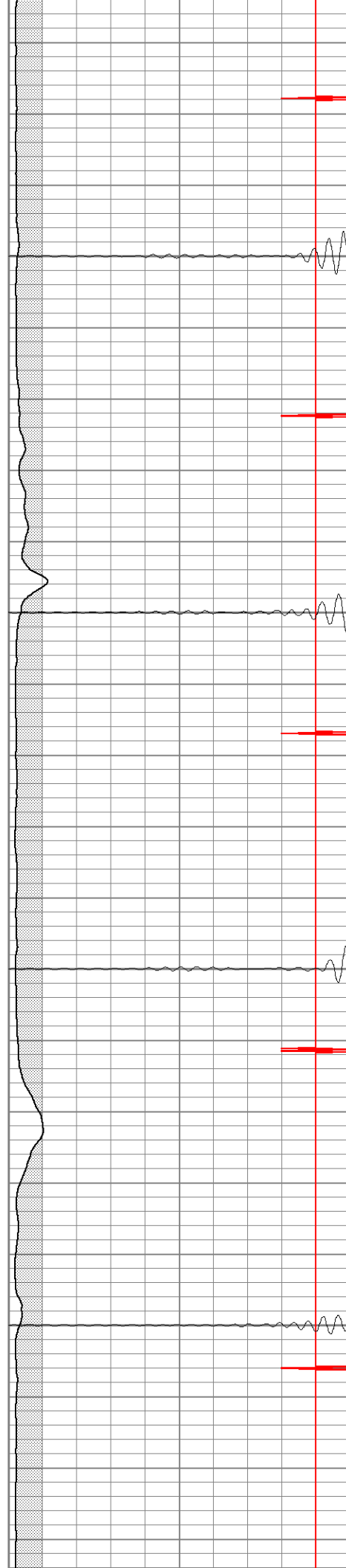


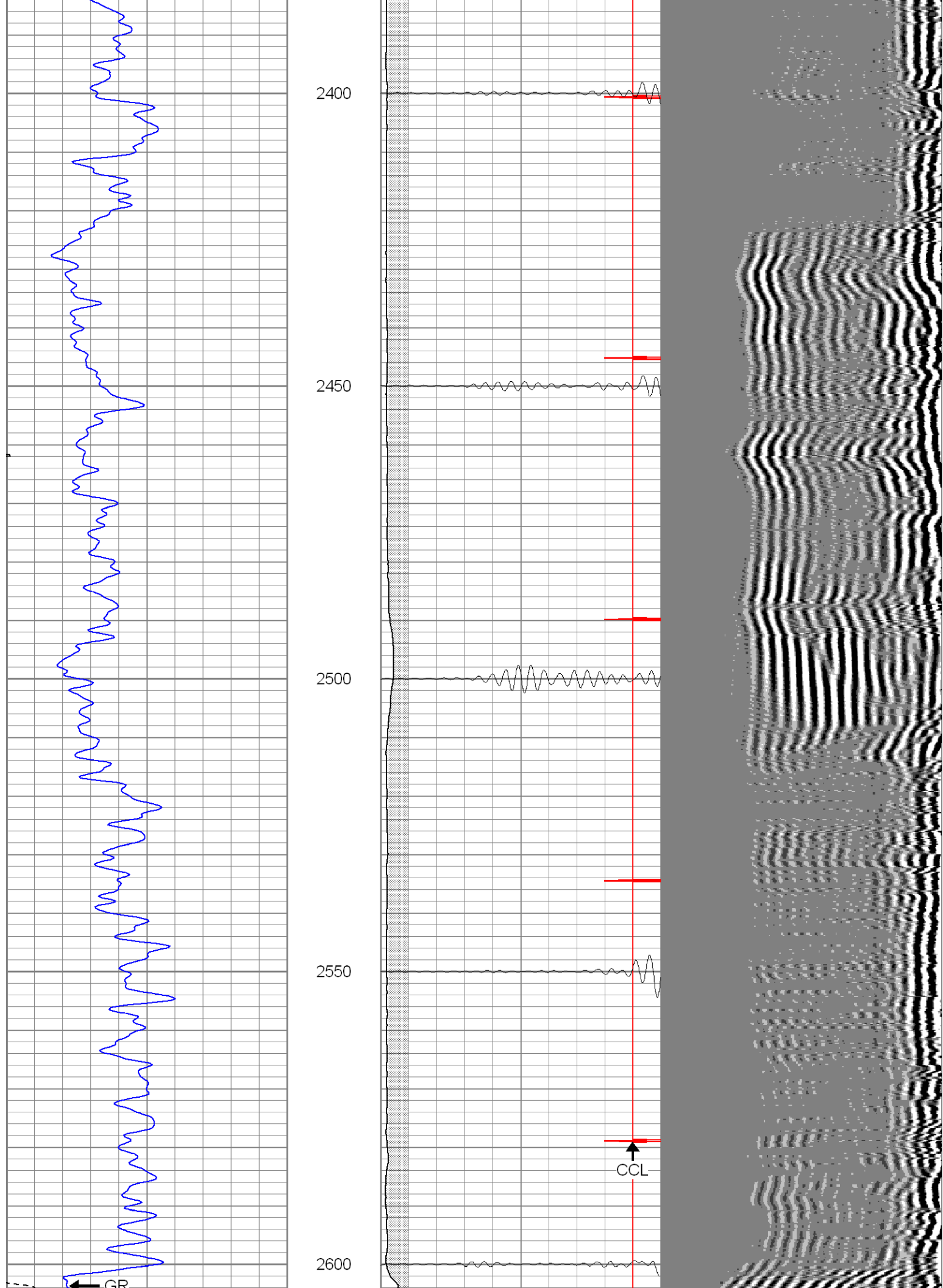
2200

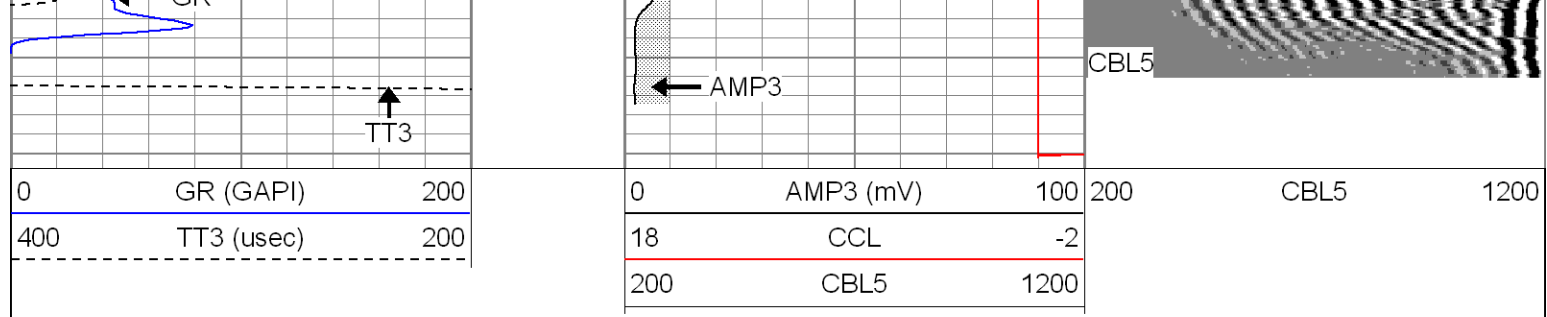
2250


2300

2350







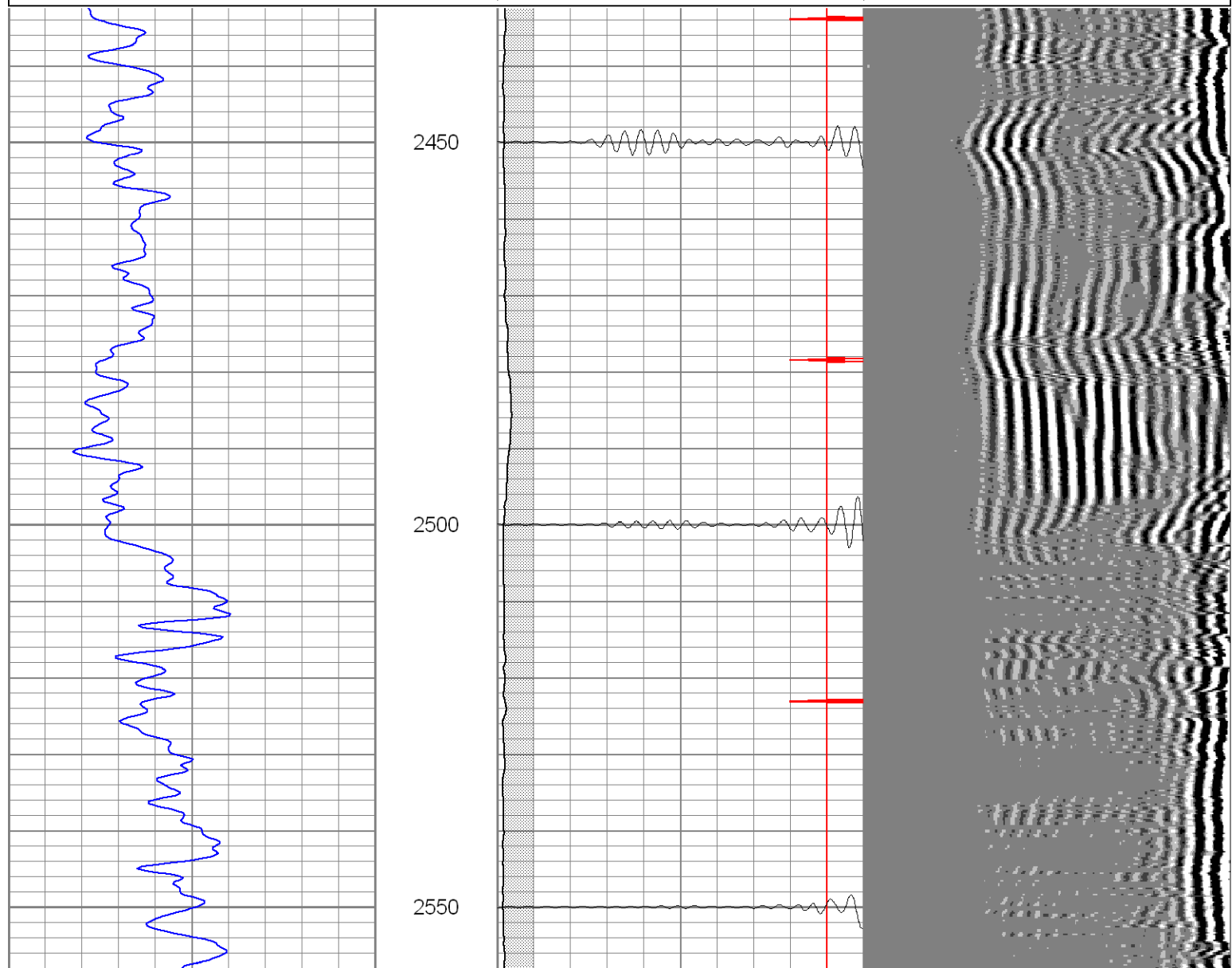
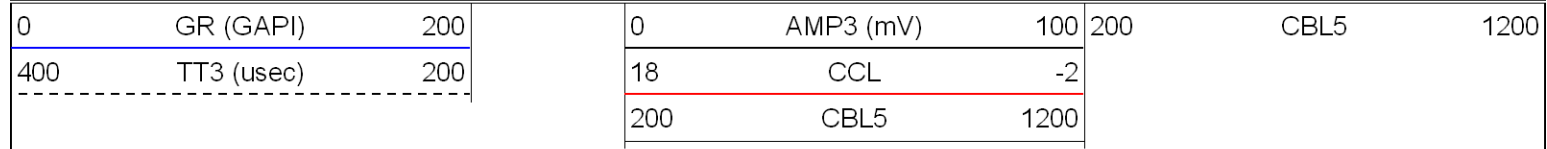


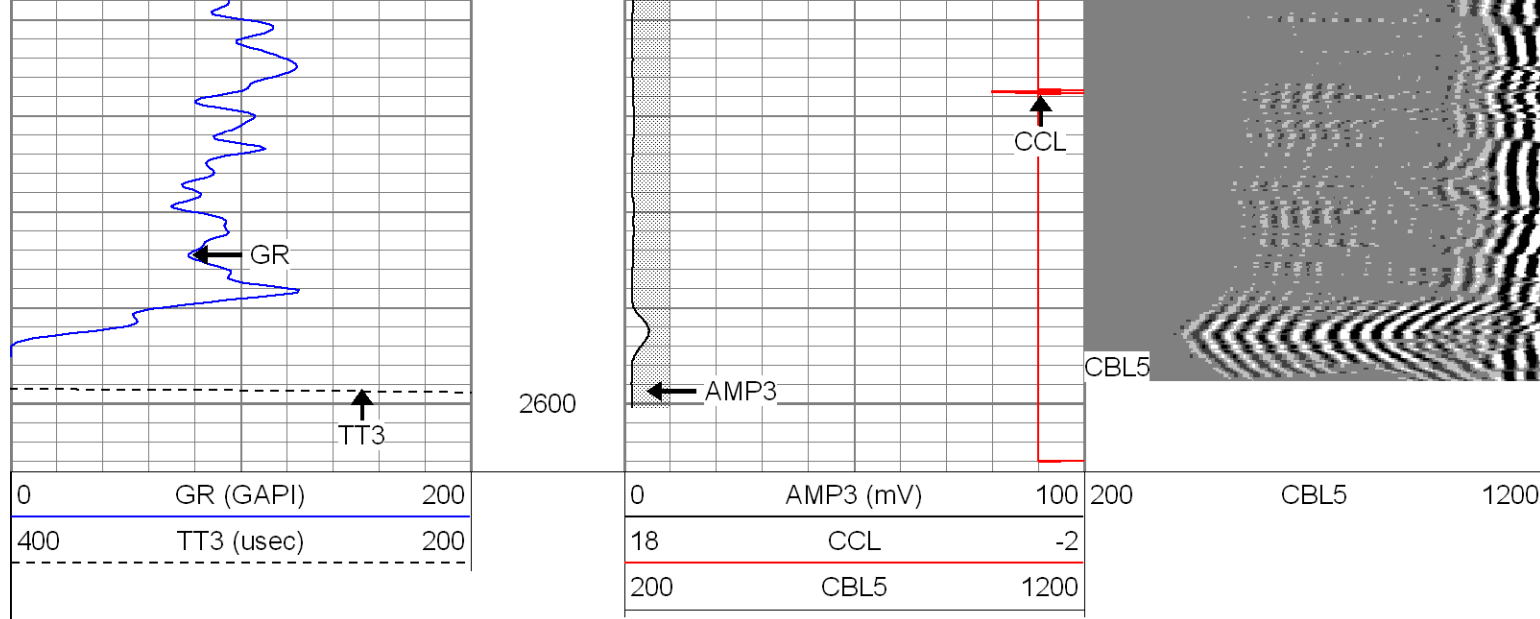
SUPERIOR
WELL SERVICES

Black Lick, Pa.
Mercer, Pa.
Wooster, Oh.
Cleveland, Ok.
Trinidad, Co.

Repeat Section

Database File: ac29-04b82807.db
 Dataset Pathname: pass1.1
 Presentation Format: cblrt
 Dataset Creation: Tue Aug 28 12:58:37 2007 by Calc Std Casedhole 07051
 Charted by: Depth in Feet scaled 1:240





Calibration Report

Database File: ac29-04b82807.db
 Dataset Pathname: pass1.1
 Dataset Creation: Tue Aug 28 12:58:37 2007 by Calc Std Casedhole 07051

Cement Bond Log Calibration Report

Serial Number:	Titan2		
Tool Model:	T2		
Performed:	Tue Aug 28 10:56:35 2007		
Depth:	0	ft	
Casing Diameter:	0	in	
	3' Spacing	5' Spacing	
Signal Zero:	0	0	mV
Calibrated Amplitude:	85	85	mV
Reading at Signal Zero:	-0.04	0	V
Reading in Free Pipe:	1.8	1.6	V
Gain:	46.1957	53.125	
Offset:	1.84783	0	

Gamma Ray Calibration Report

Serial Number:	TITAN2	
Tool Model:	T2	
Performed:	Tue Aug 28 10:56:46 2007	
Calibrator Value:	1.0	GAPI
Background Reading:	0.0	cps
Calibrator Reading:	1.0	cps
Sensitivity:	1.5000	GAPI/cps