

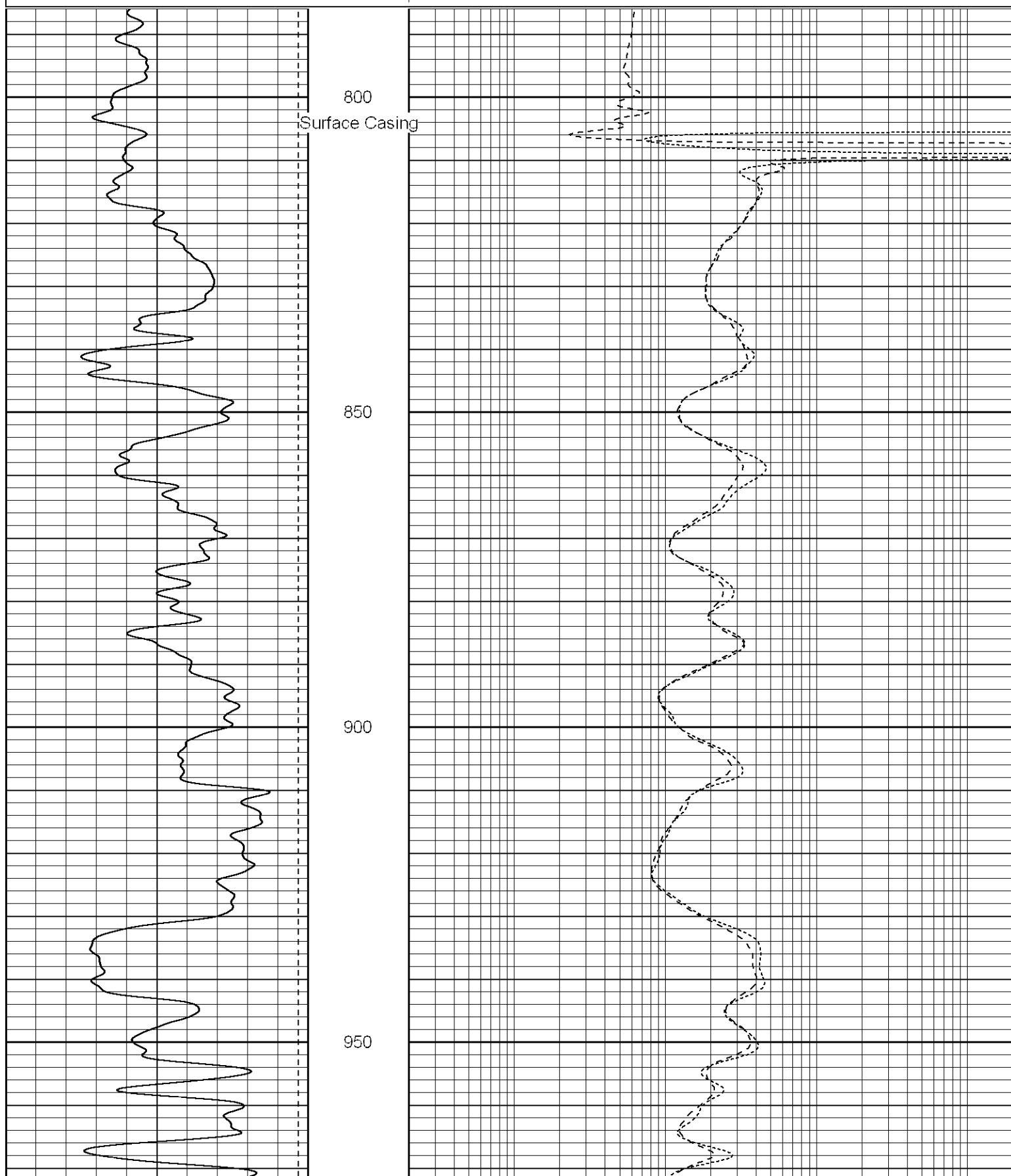
Pattern

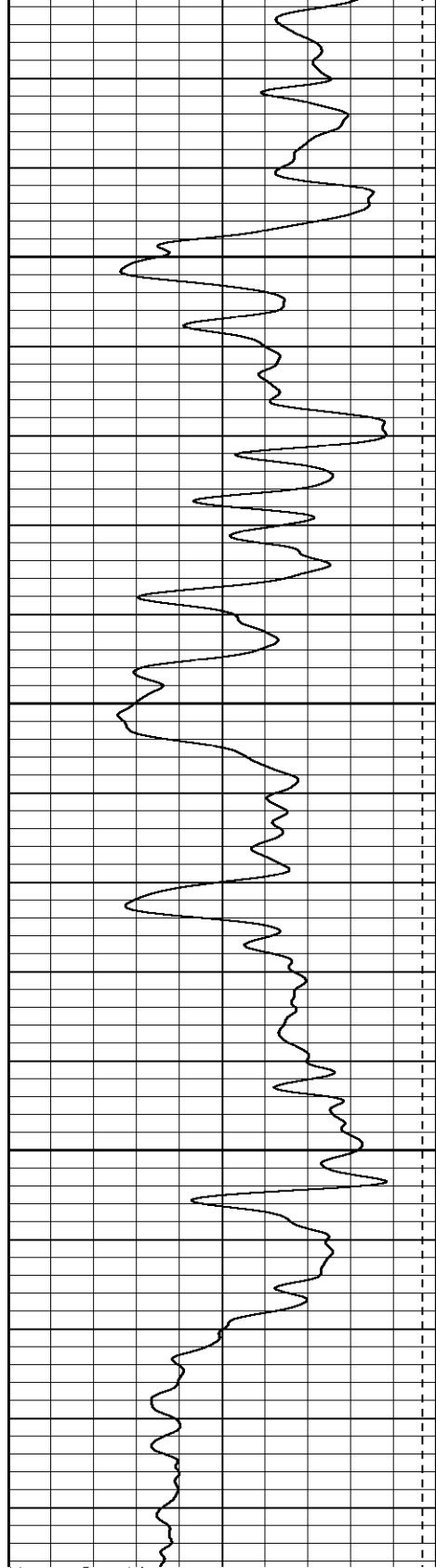
Company	XTO Energy Inc.	Com
	Apache Canyon 12-04	Well
	Purgatoire River	Field
	Las Animas	County
	Colorado	State
Date		Perman Log Meas Drilling h
Run Number		
Depth Driller		
Depth Logger		
Bottom Logged Interval		
Top Log Interval		
Casing Driller		
Casing Logger		
Bit Size		
Type Fluid in Hole		
Density / Viscosity		
pH / Fluid Loss		
Source of Sample		
Rm @ Meas. Temp		
Rmf @ Meas. Temp		
Rmc @ Meas. Temp		
Source of Rmf / Rmc		
Rm @ BHT		
Time Circulation Stopped		
Time Logger on Bottom		
Maximum Recorded Temperature		
Equipment Number		
Location		
Recorded By		
Witnessed By		

Database File: xtoac1204.db
Dataset Pathname: pass2.1
Presentation Format: dil
Dataset Creation: Sun Aug 06 09:22:40 2006 by Calc Warrior 7.0 STD Ope
Charted by: Depth in Feet scaled 1:240

0	GR (GAPI)	200
-200	SP (mV)	0

0.2	RILD (Ohm-m)	2000
0.2	RILM (Ohm-m)	2000
0.2	RLL3 (Ohm-m)	2000

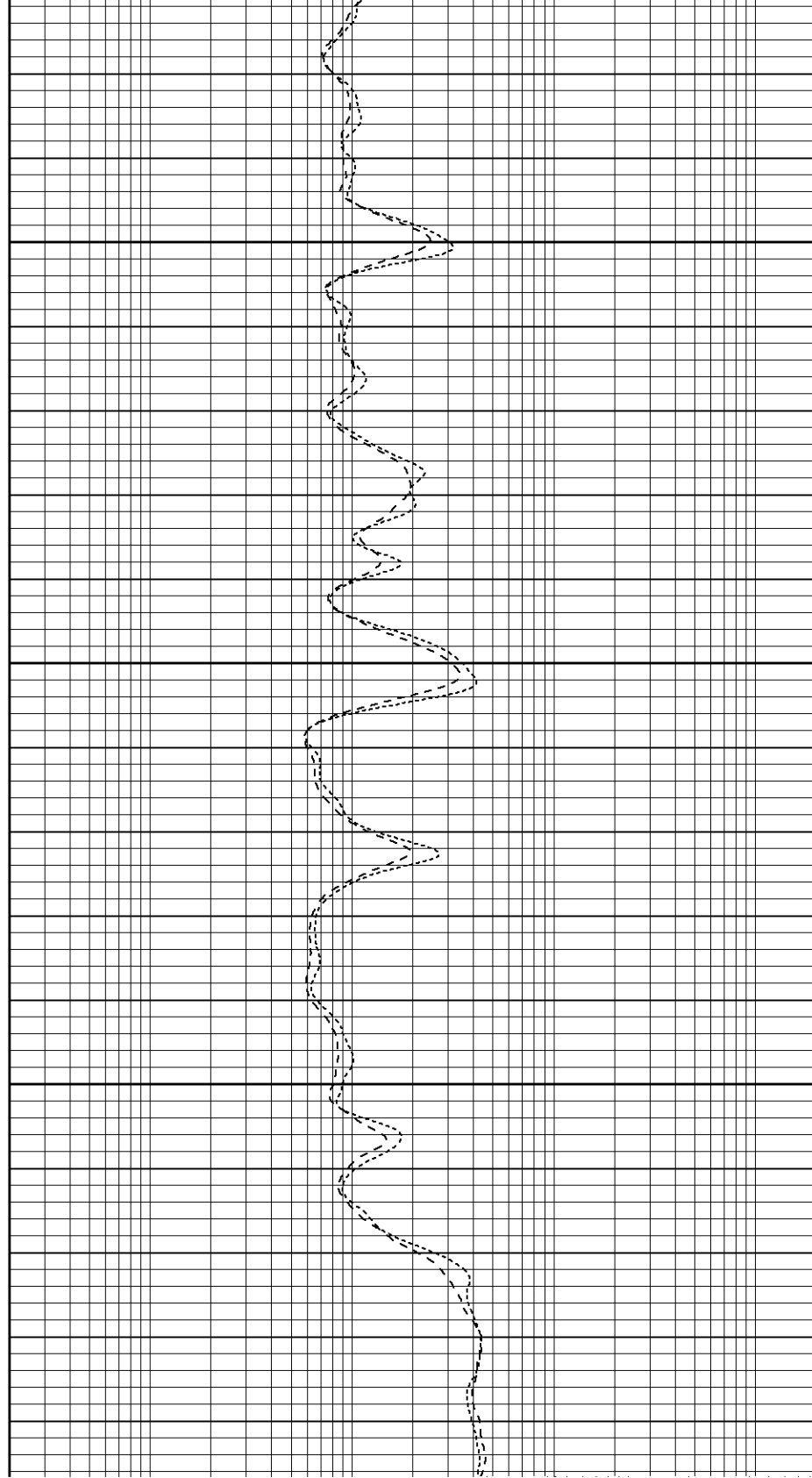


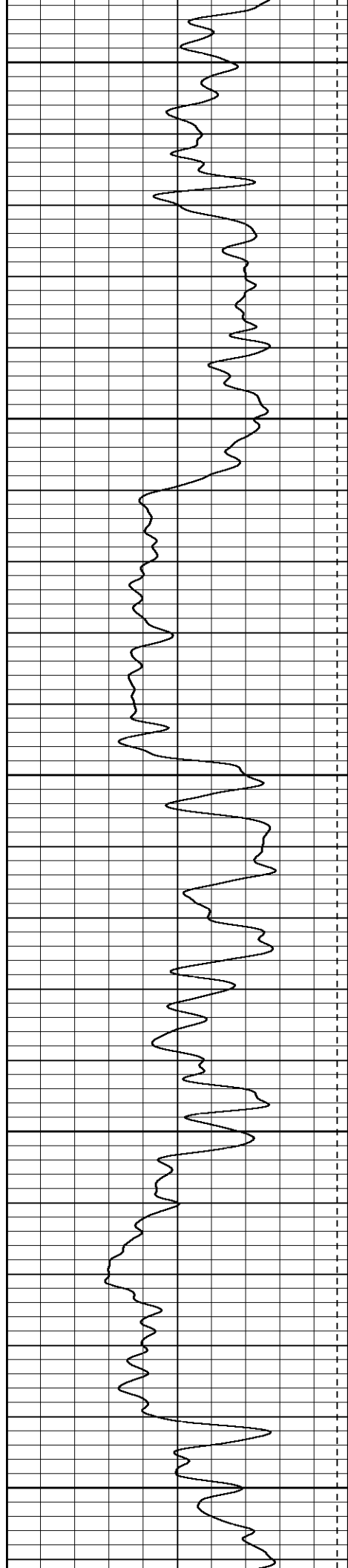


1000

1050

1100





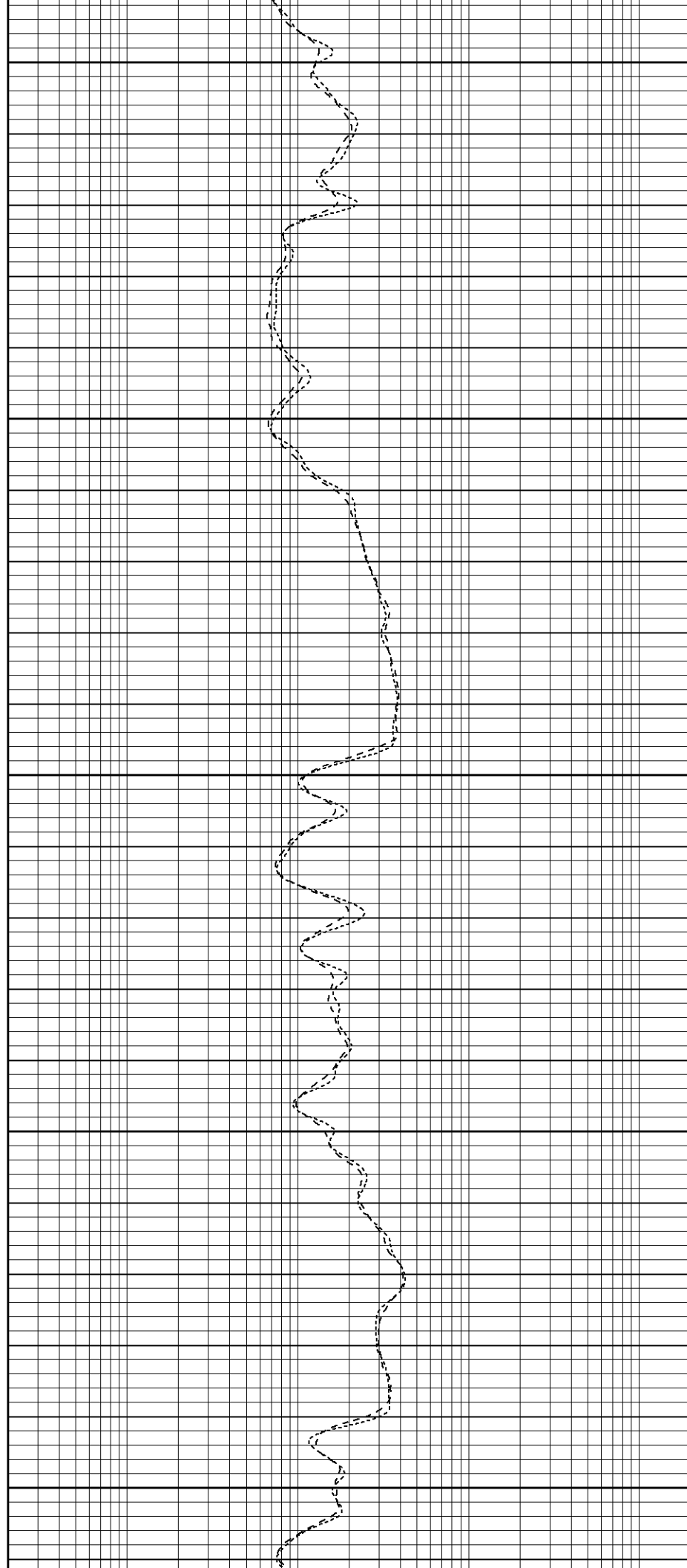
1200

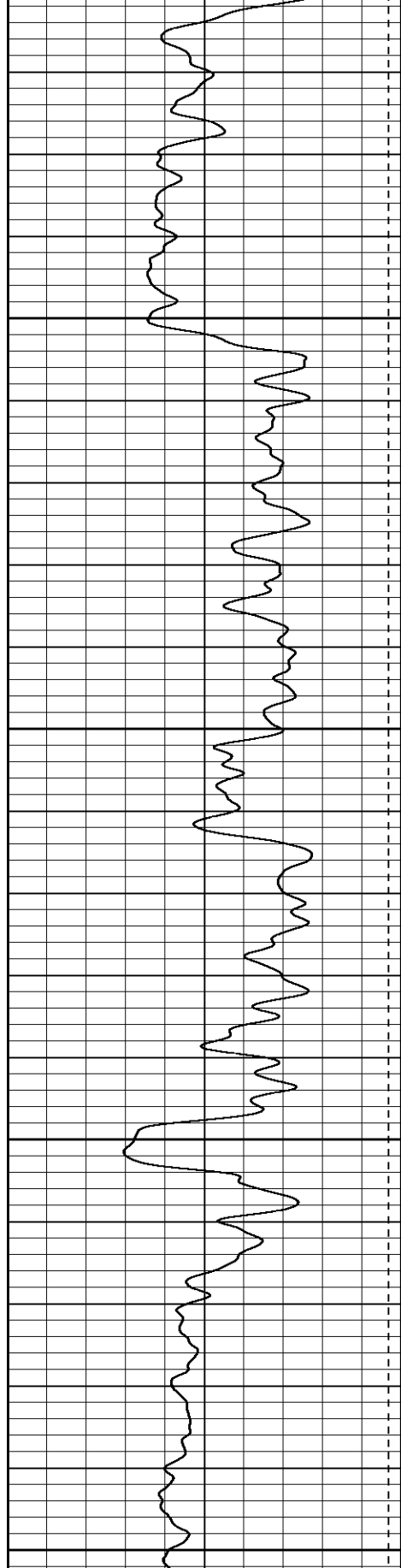
1250

1300

1350

1400



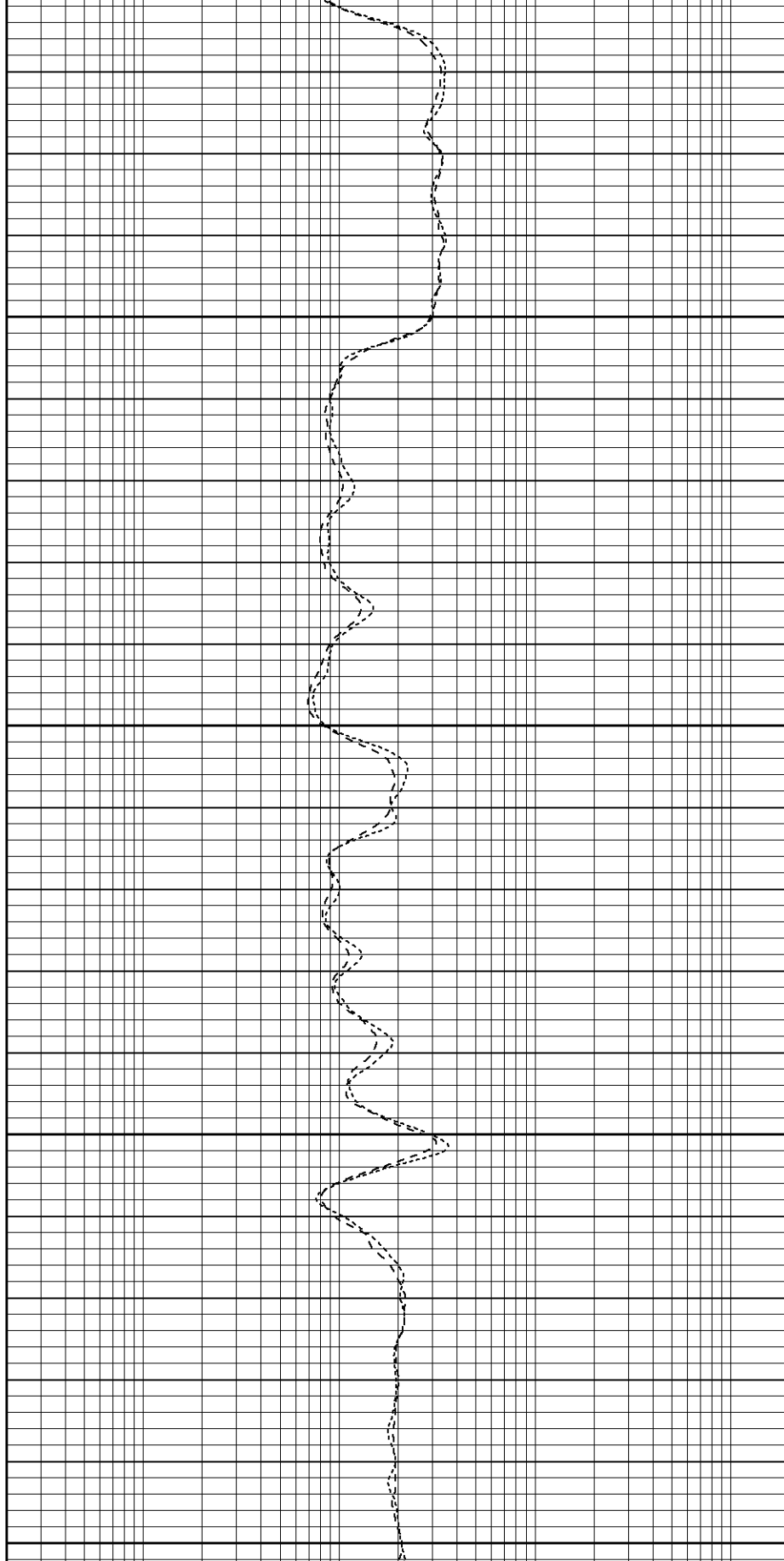


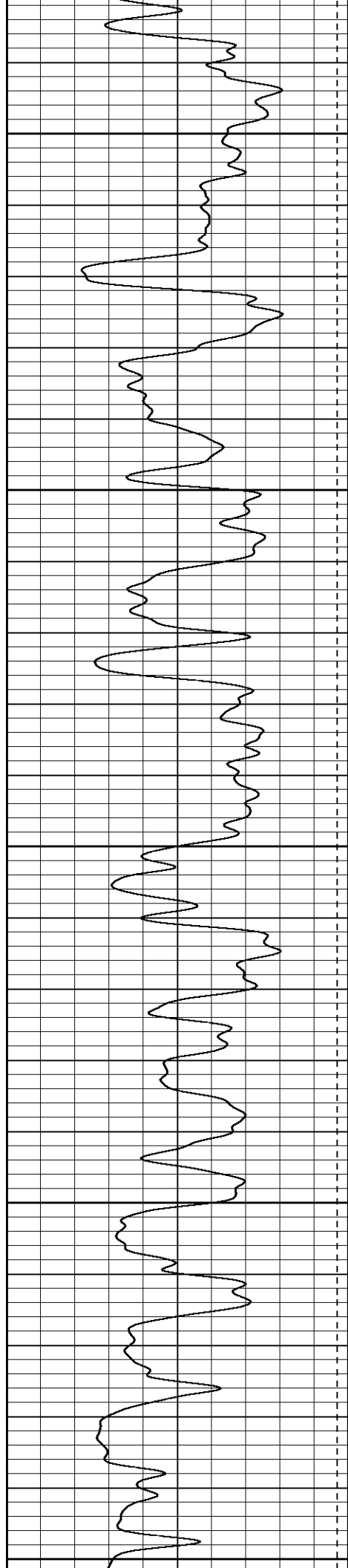
1450

1500

1550

1600





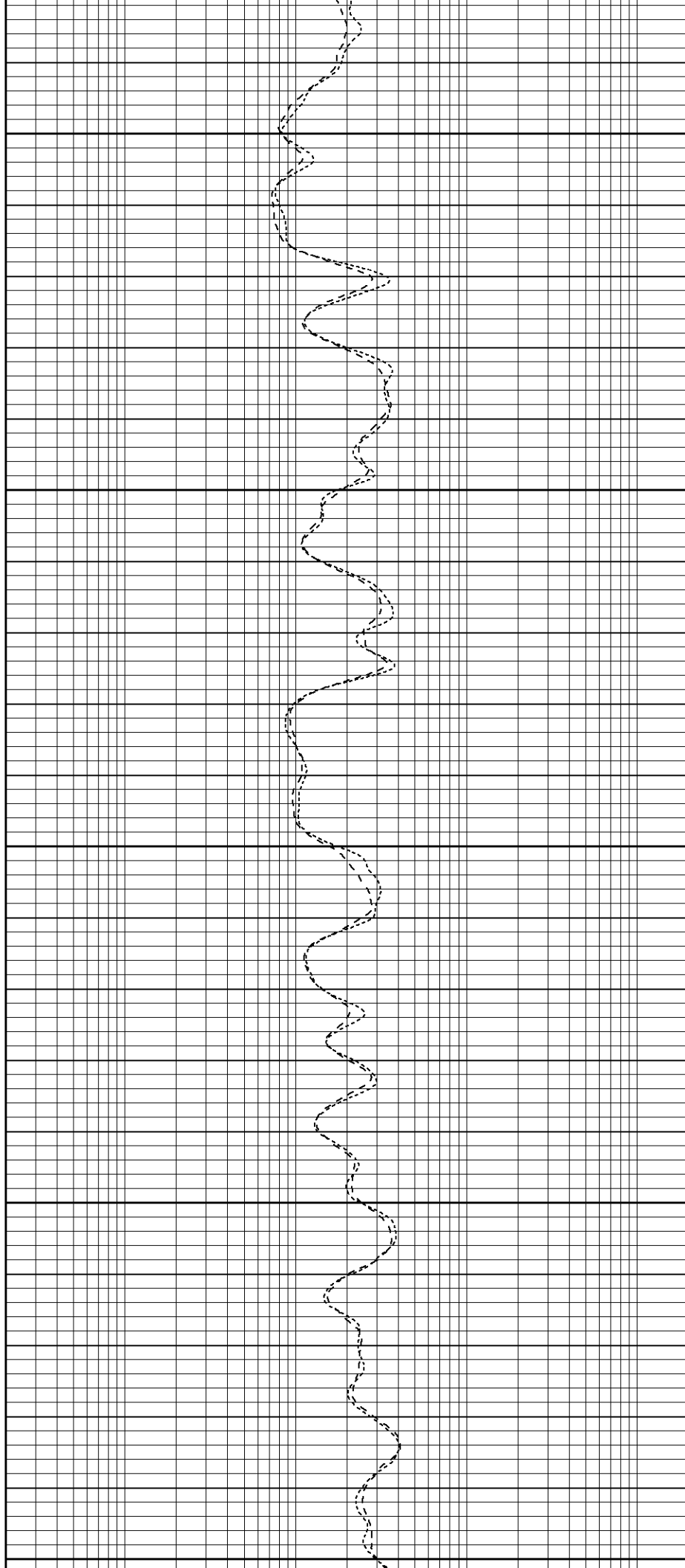
1650

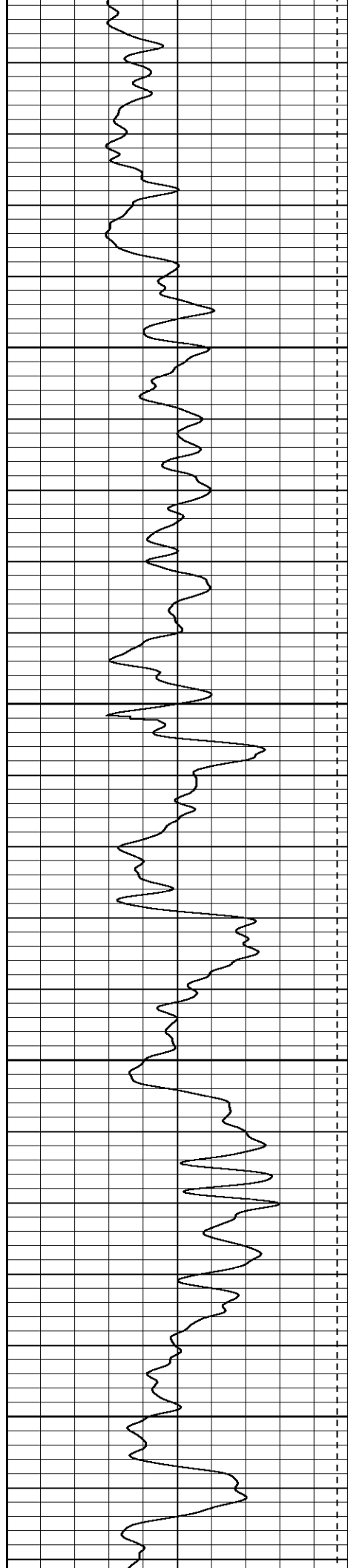
1700

1750

1800

1850



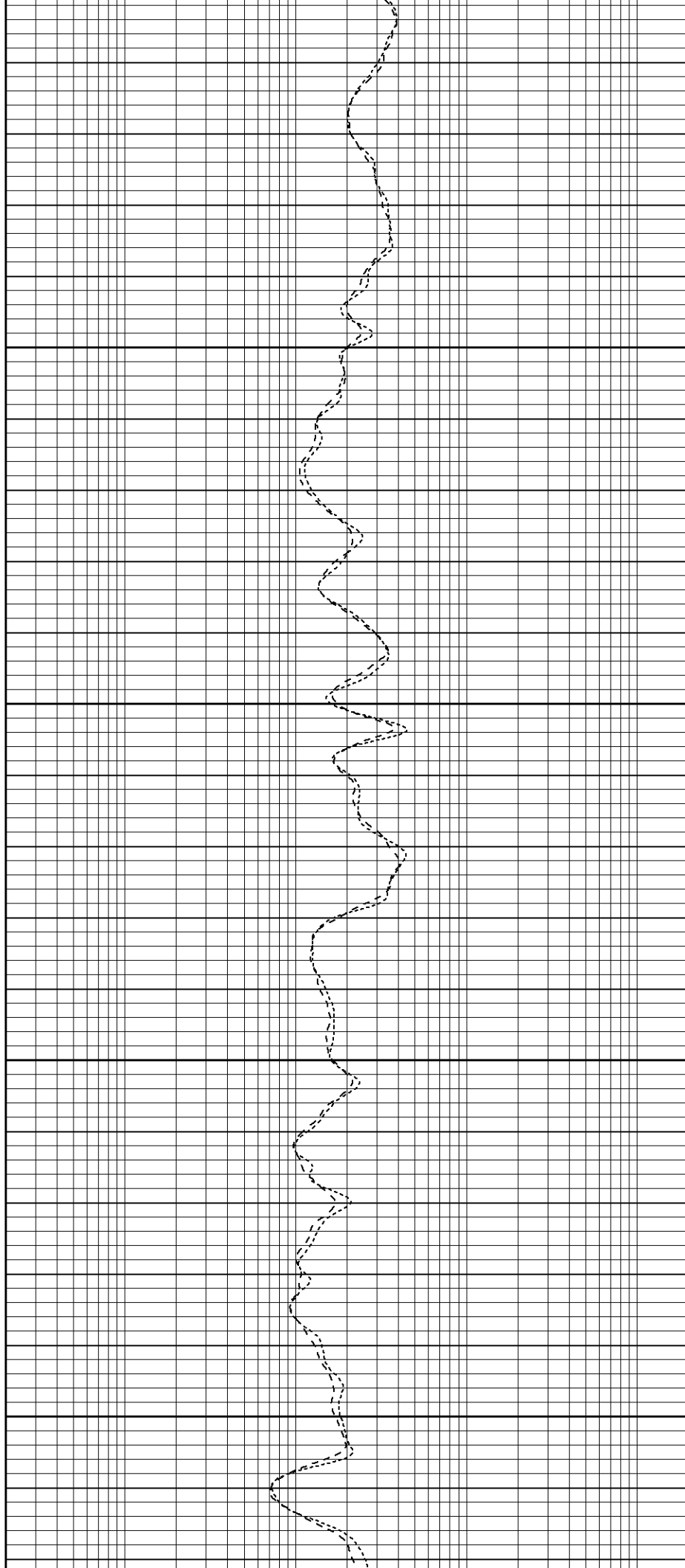


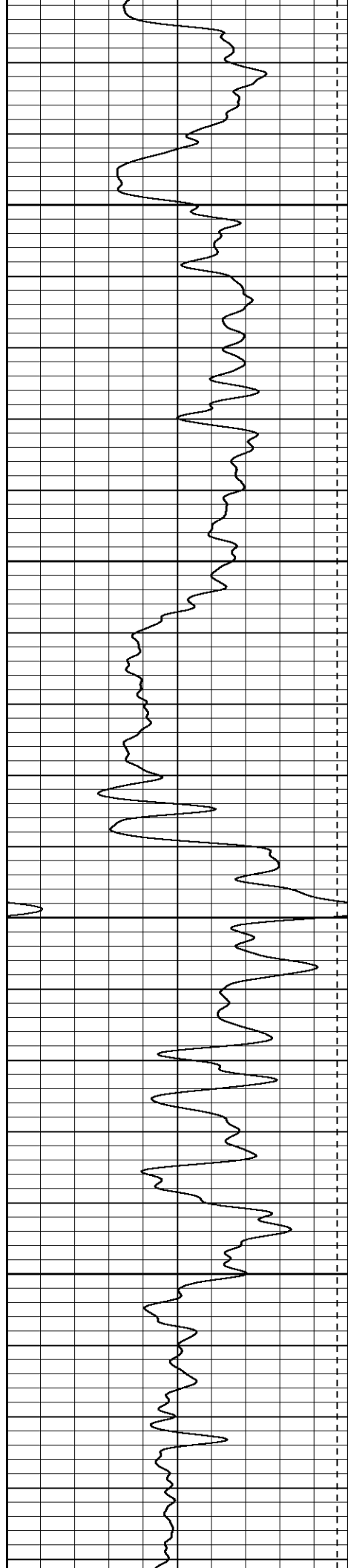
1900

1950

2000

2050



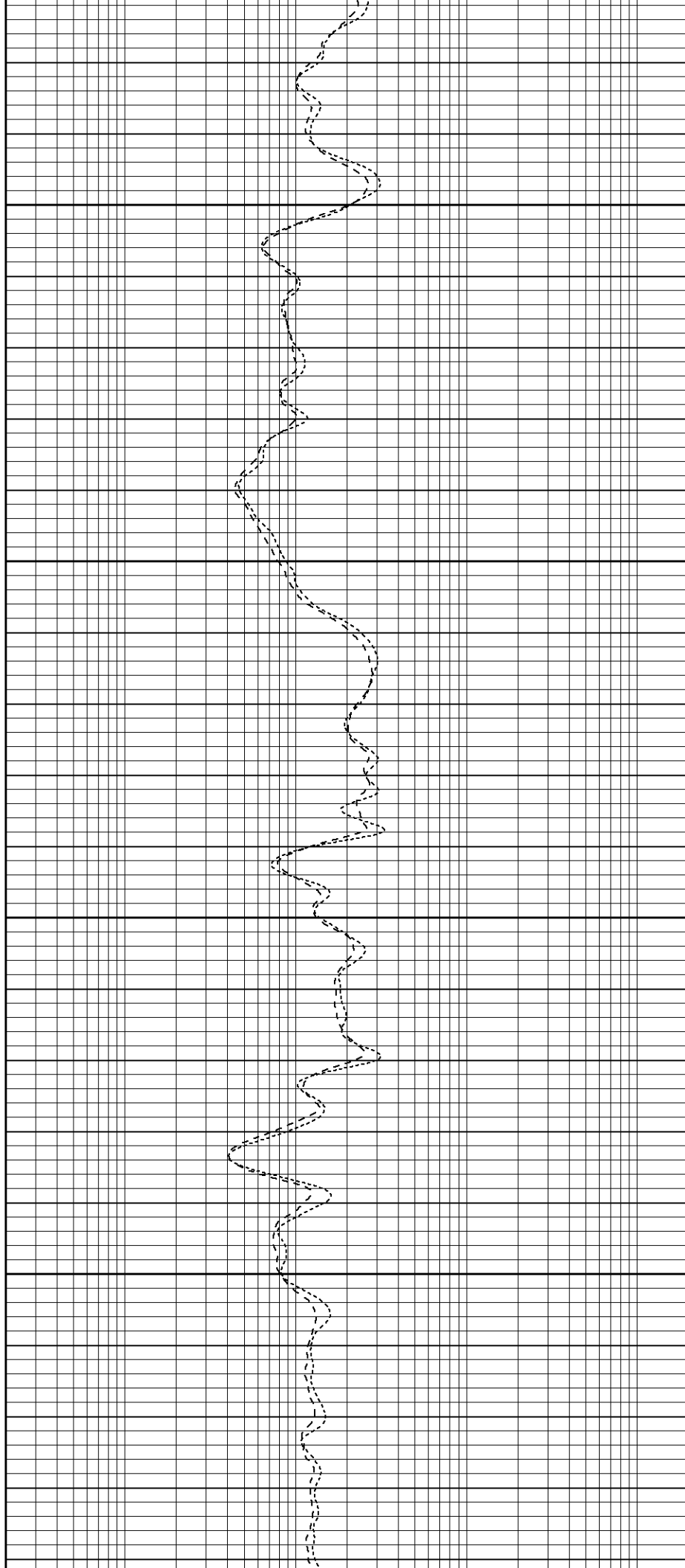


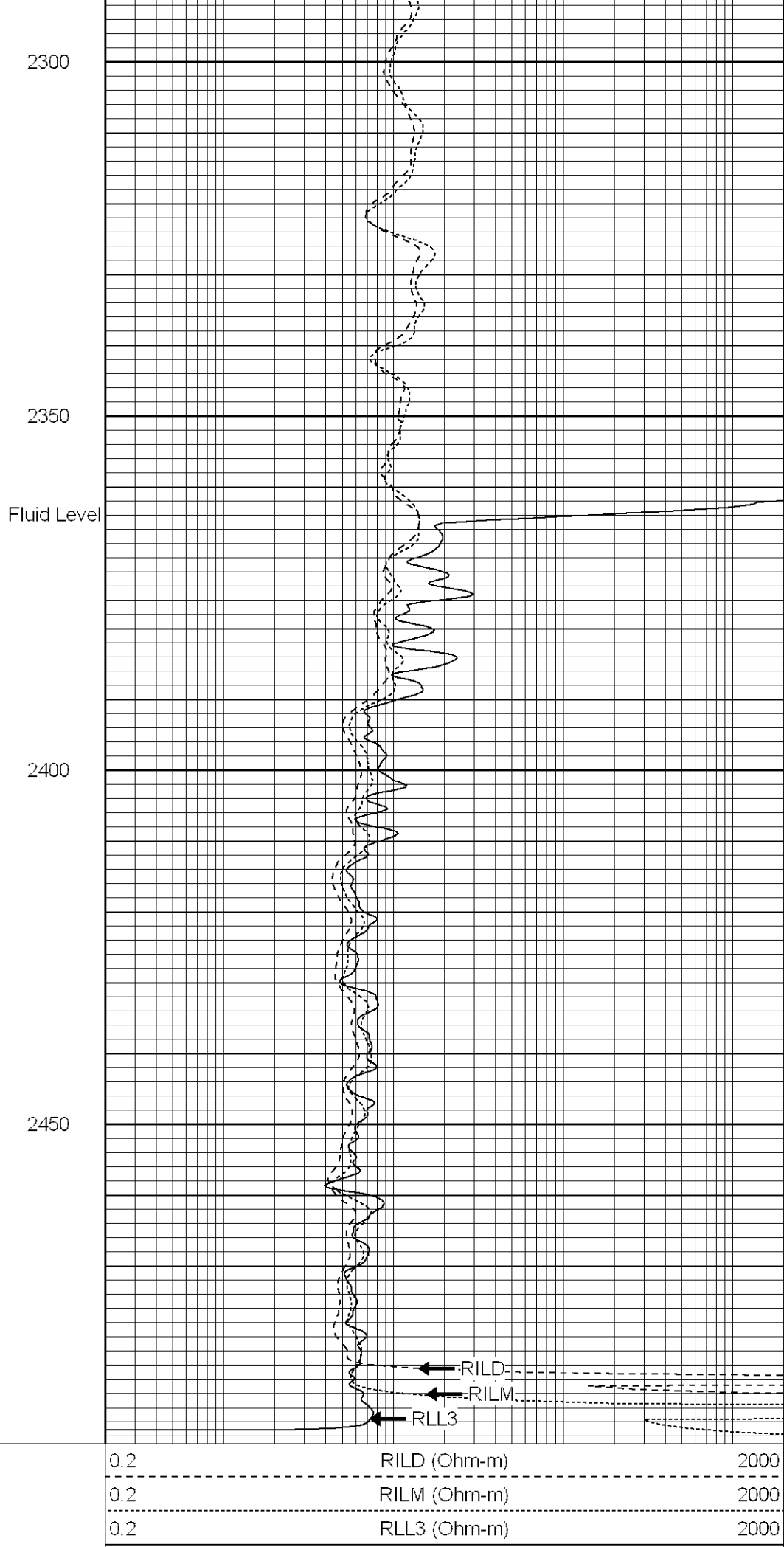
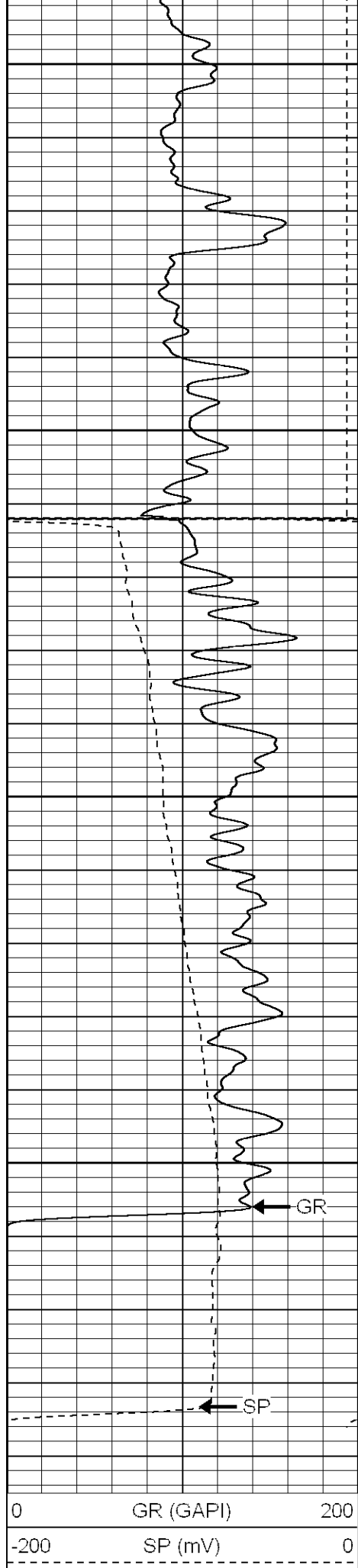
2100

2150

2200

2250

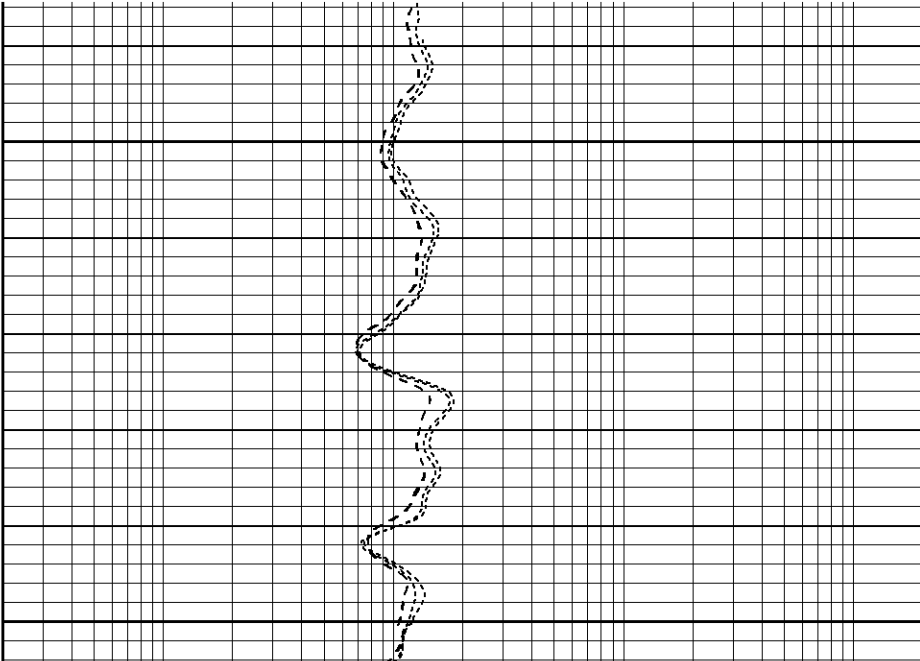
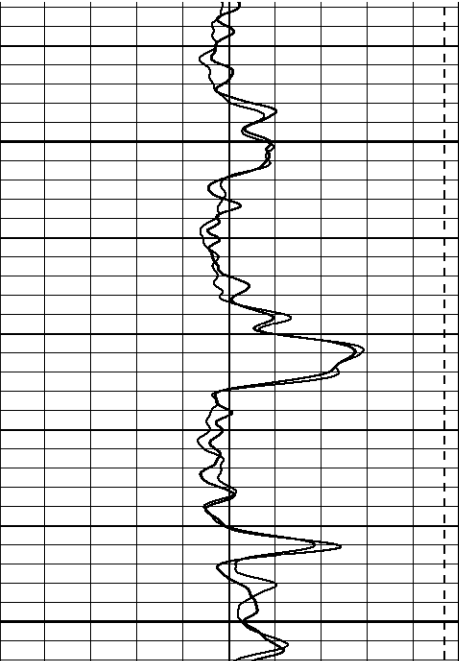


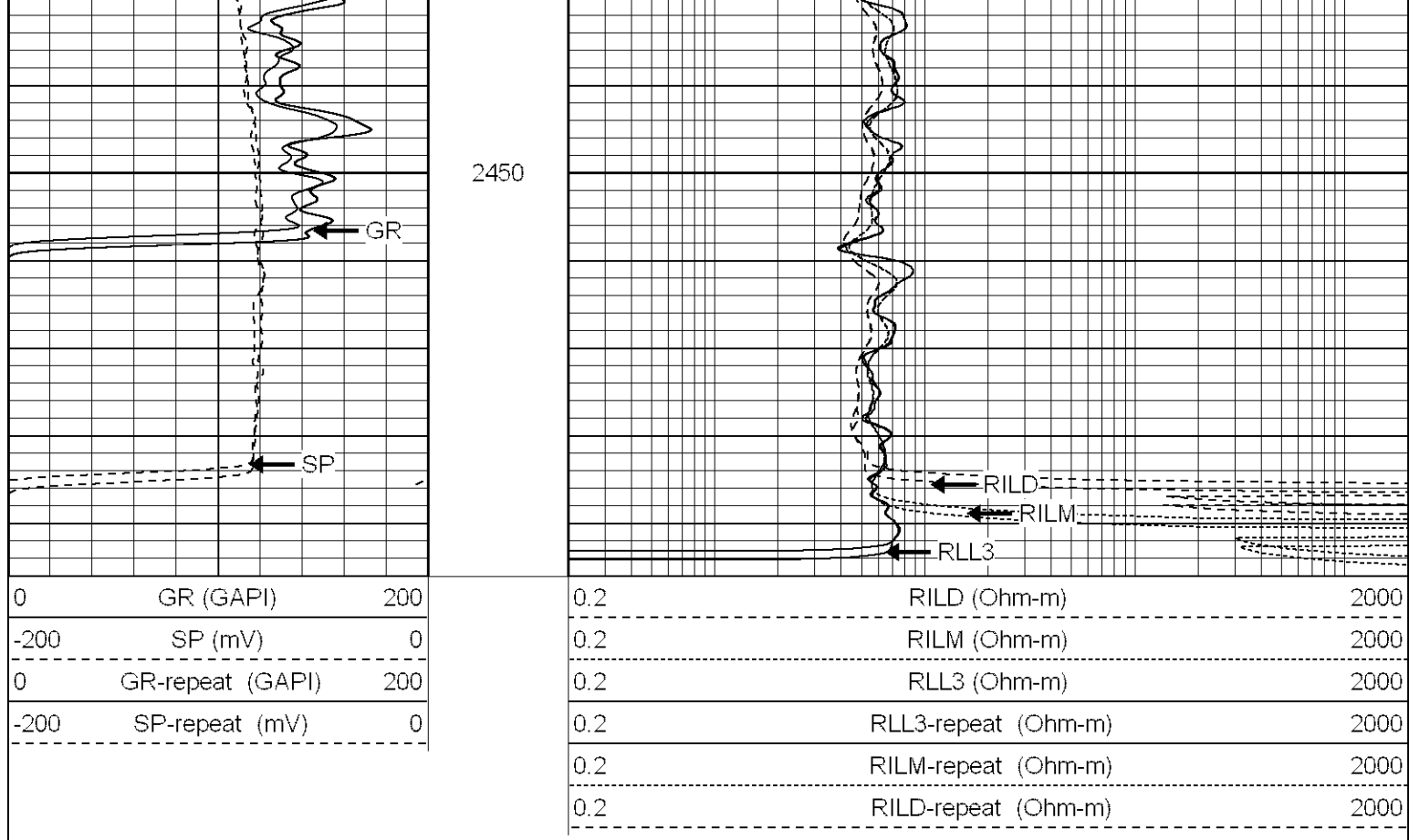


Database File: xtoac1204.db
Dataset Pathname: pass1.1
Presentation Format: dil
Dataset Creation: Sun Aug 06 08:41:16 2006 by Calc Warrior 7.0 STD Ope
Charted by: Depth in Feet scaled 1:240

0	GR (GAPI)	200
-200	SP (mV)	0
0	GR-repeat (GAPI)	200
-200	SP-repeat (mV)	0

0.2	RILD (Ohm-m)	2000
0.2	RILM (Ohm-m)	2000
0.2	RLL3 (Ohm-m)	2000
0.2	RLL3-repeat (Ohm-m)	2000
0.2	RILM-repeat (Ohm-m)	2000
0.2	RILD-repeat (Ohm-m)	2000





Dual Induction Calibration Report										
Serial-Model:			5375-G							
Surface Cal Performed:			Sat Jul 29 15:03:01 2006							
Downhole Cal Performed:			Mon Jul 31 11:03:57 2006							
Surface Calibration										
			Readings			References			Results	
Loop:	Air	Loop		Air	Loop		m	b		
Deep	0.020	0.626	V	0.000	500.000	mmho-m	825.140	-16.503		
Medium	0.010	0.749	V	0.000	550.000	mmho-m	744.284	-7.677		
Internal:	Zero	Cal		Zero	Cal		m	b		
Deep	0.007	0.626	V	0.000	500.000	mmho-m	808.280	-5.935		
Medium	0.010	0.749	V	0.000	550.000	mmho-m	744.155	-7.535		
Downhole Calibration										
			Readings			References			Results	
Internal:	Zero	Cal		Zero	Cal		m	b		
Deep	-0.286	500.148	mmho-m	-0.118	499.985	mmho-m	0.999	0.168		
Medium	-0.377	549.918	mmho-m	-0.141	549.955	mmho-m	1.000	0.236		
Shallow	2.509	0.018	V	500.000	2.000	Ohm-m	149.883	-4.800		

Compensated Density Calibration Report								
Serial-Model:			902-2.75POH					
Source / Verifier:			/					
Master Calibration Performed:			Mon Jul 24 12:00:01 2006					

Master Calibration

	Density			Far Detector	Near Detector	
Magnesium	1.710	g/cc		1017.78	494.16	cps
Aluminum	2.590	g/cc		182.34	245.43	cps
Spine Angle = 67.85			Density/Spine Ratio = 0.474			
	Size			Reading		
Small Ring	8.10	in		1.84	V	
Large Ring	17.00	in		4.32	V	

Neutron Calibration Report


Serial Number: 802
 Tool Model: 2.75POH
 Performed: Mon Jul 24 12:55:59 2006

 Calibrator Value: 1 NAPI
 Calibrator Reading: 1 cps
 Sensitivity: 1 NAPI/cps

Gamma Ray Calibration Report

Serial Number: 804
 Tool Model: 2.75POH
 Performed: Sat Jul 29 08:25:09 2006

 Calibrator Value: 1.0 GAPI
 Background Reading: 0.0 cps
 Calibrator Reading: 1.0 cps
 Sensitivity: 0.8100 GAPI/cps

Sensor	Offset (ft)	Schematic	Description	Len (ft)	OD (in)	Wt (lb)
CHD	39.37		None	0.75	1.50	5.00
GR	37.64		GR-2.75POH (804) Probe	3.73	2.75	43.00
NEU	32.10		NEU-2.75POH (802) Probe Epithermal	4.75	2.75	58.00
LSD	24.47		CDL-2.75POH (902) Probe	8.43	2.75	106.00
DCAL	24.19					
SSD	23.95					
10pin	21.72		Probe	0.89	3.50	20.00

