



SUPERIOR
Black Lick, Pa.
Mercer, Pa.
Wooster, Oh.
Cleveland, Ok.
Trinidad, Co.

DUAL INDUCTION LOG

Company	XTO Energy Inc.		
Well	Apache Canyon 29-04		
Field	Purgatoire River		
County	Las Animas	State	Colorado
Location:	API # : 05 071 09281 00		Other Services CDL NEUTRON
SEC 29 TWP 34S RGE 67W		Elevation	
Permanent Datum	Ground Level	Elevation	8130'
Log Measured From	Ground Level		
Drilling Measured From	Ground Level		
Date	8-16-07		
Run Number	One		
Depth Driller	2725'		
Depth Logger	2711'		
Bottom Logged Interval	2709'		
Top Log Interval	Surface Casing		
Casing Driller	8 5/8" @ 497'		
Casing Logger	494'		
Bit Size	7 7/8"		
Type Fluid in Hole	Water		
Density / Viscosity	///		
pH / Fluid Loss	///		
Source of Sample	///		
Rm @ Meas. Temp	///		
Rmf @ Meas. Temp	///		
Rmc @ Meas. Temp	///		
Source of Rmf / Rmc	///		
Rm @ BHT	///		
Time Circulation Stopped	4:15 P.M.		
Time Logger on Bottom	6:45 P.M.		
Maximum Recorded Temperature	102 DEG F		
Equipment Number	T697		
Location	Trinidad		
Recorded By	M. Norton		
Witnessed By	Mr. Don Johnson		

<<< Fold Here >>>

All interpretations are opinions based on inferences from electrical or other measurements and we cannot and do not guarantee the accuracy or correctness of any interpretation, and we shall not, except in the case of gross or willful negligence on our part, be liable or responsible for any loss, costs, damages, or expenses incurred or sustained by anyone resulting from any interpretation made by any of our officers, agents or employees. These interpretations are also subject to our general terms and conditions set out in our current Price Schedule.

Comments

Well Directions:

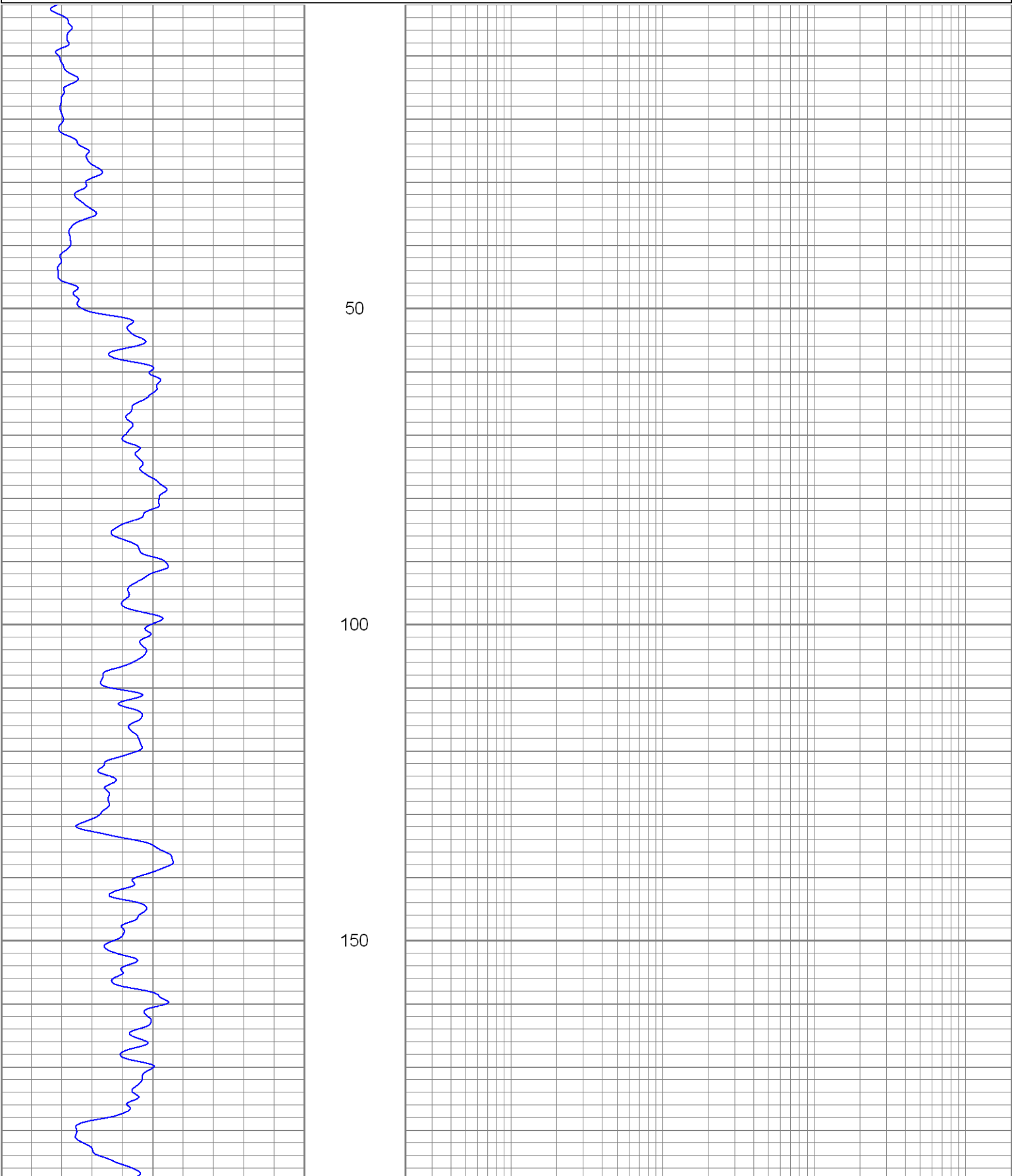
First Bosque entrance, left on Little Bingham, at top just before entering Hill Ranch take right, first right, drive thru one location, first left to location.

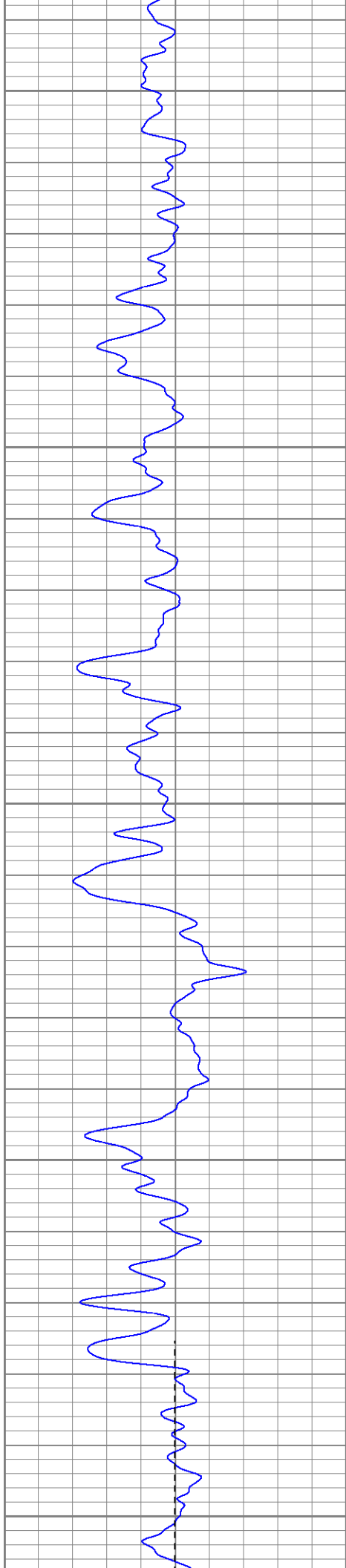


SUPERIOR
Black Lick, Pa.
Mercer, Pa.
Wooster, Oh.
Cleveland, Ok.
Trinidad, Co.

Main Pass

0	GR (GAPI)	200	0.2	RILM (Ohm-m)	2000
-100	SP (mV)	100	0.2	RILD (Ohm-m)	2000
			0.2	RLL3 (Ohm-m)	2000





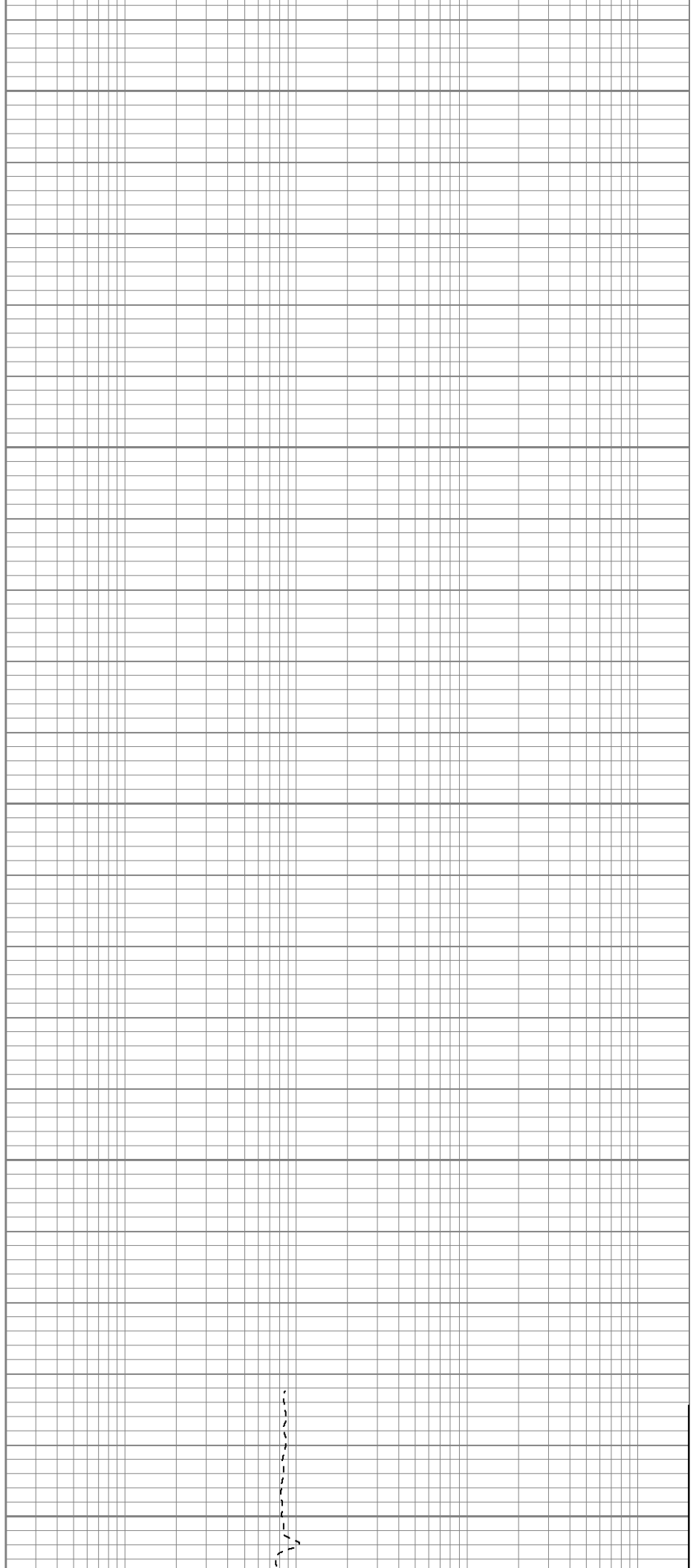
200

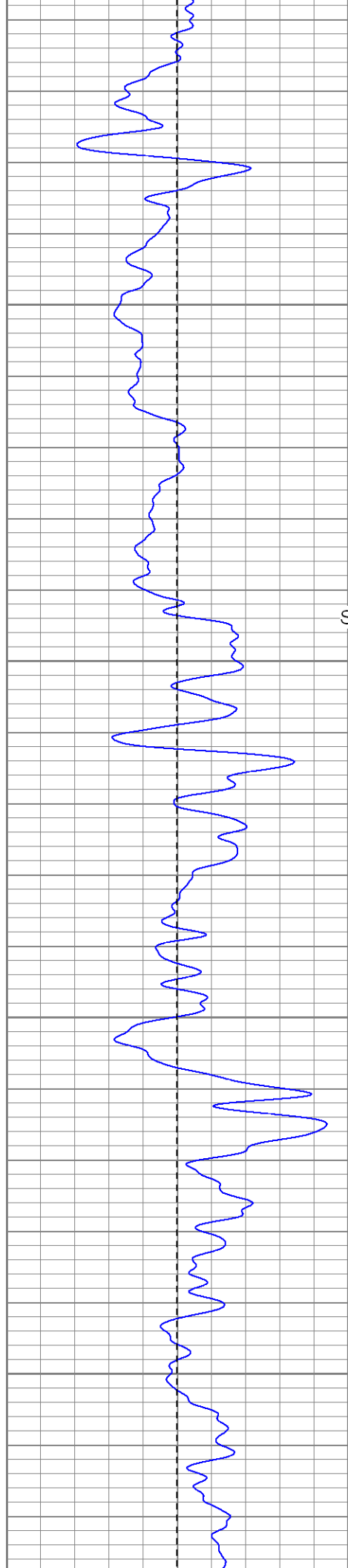
250

300

350

400





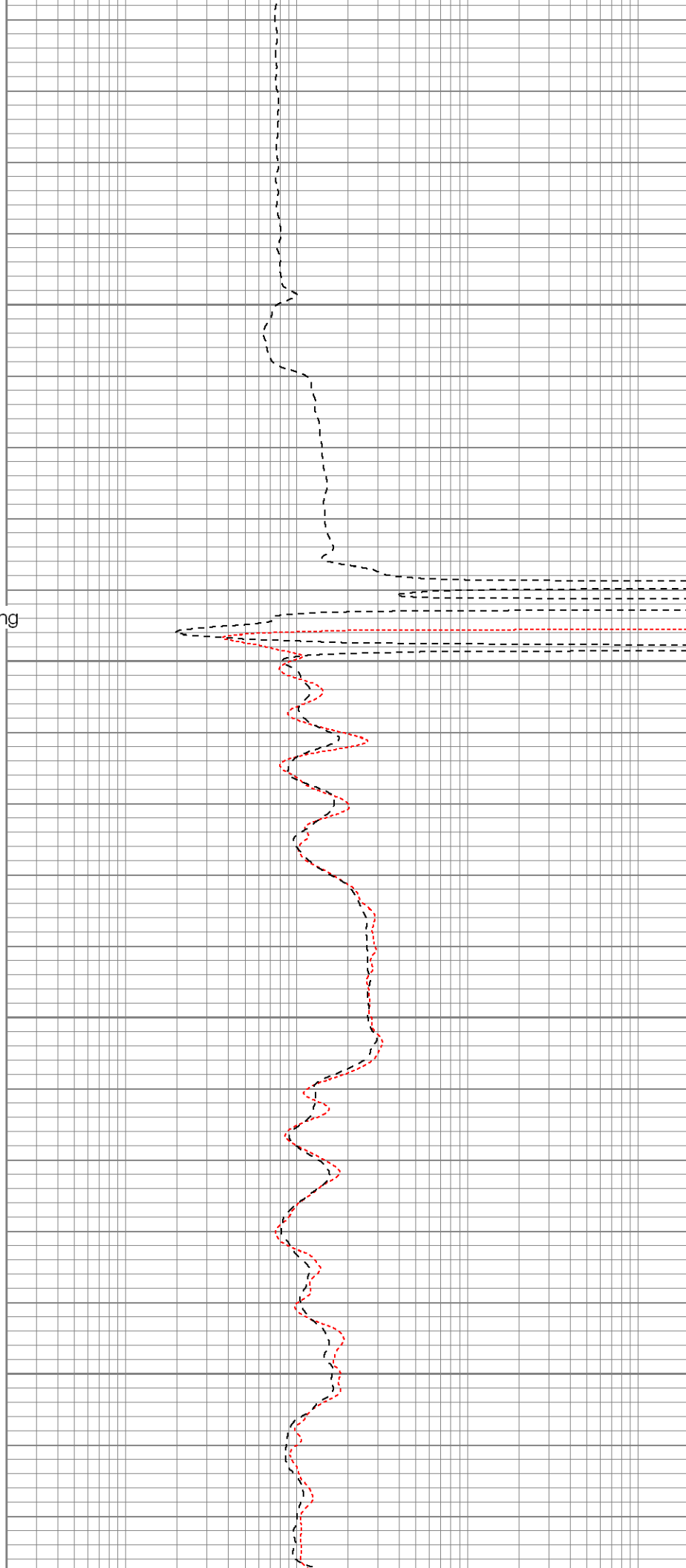
Surface Casing

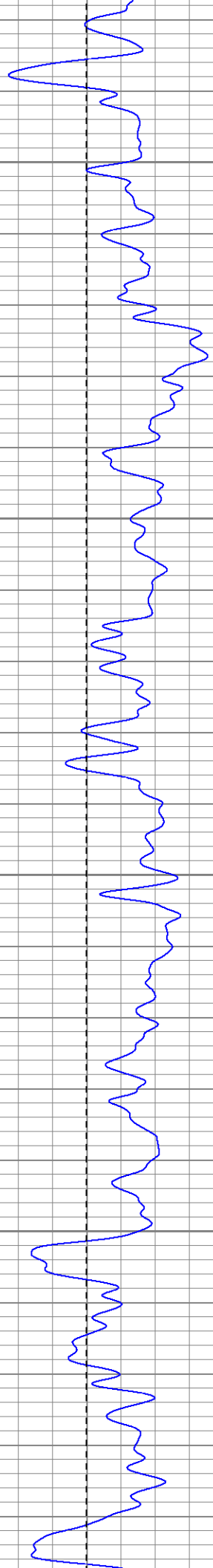
450

500

550

600



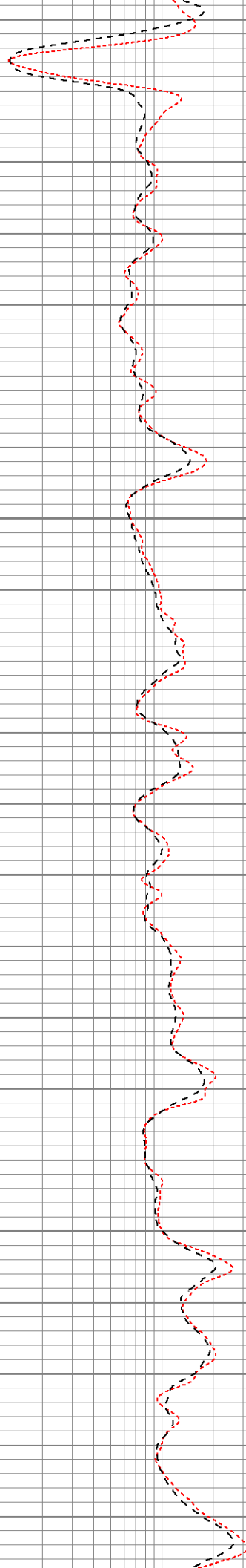


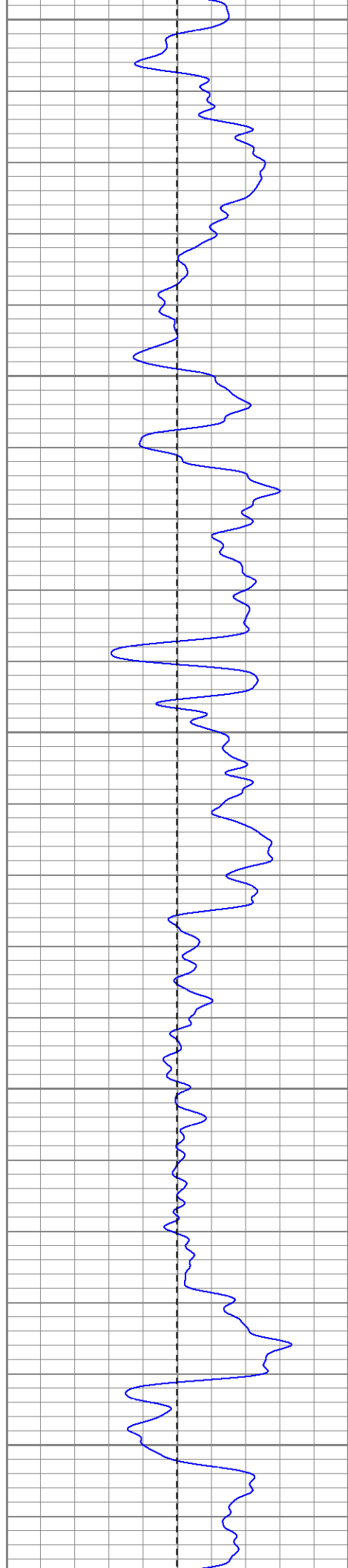
650

700

750

800





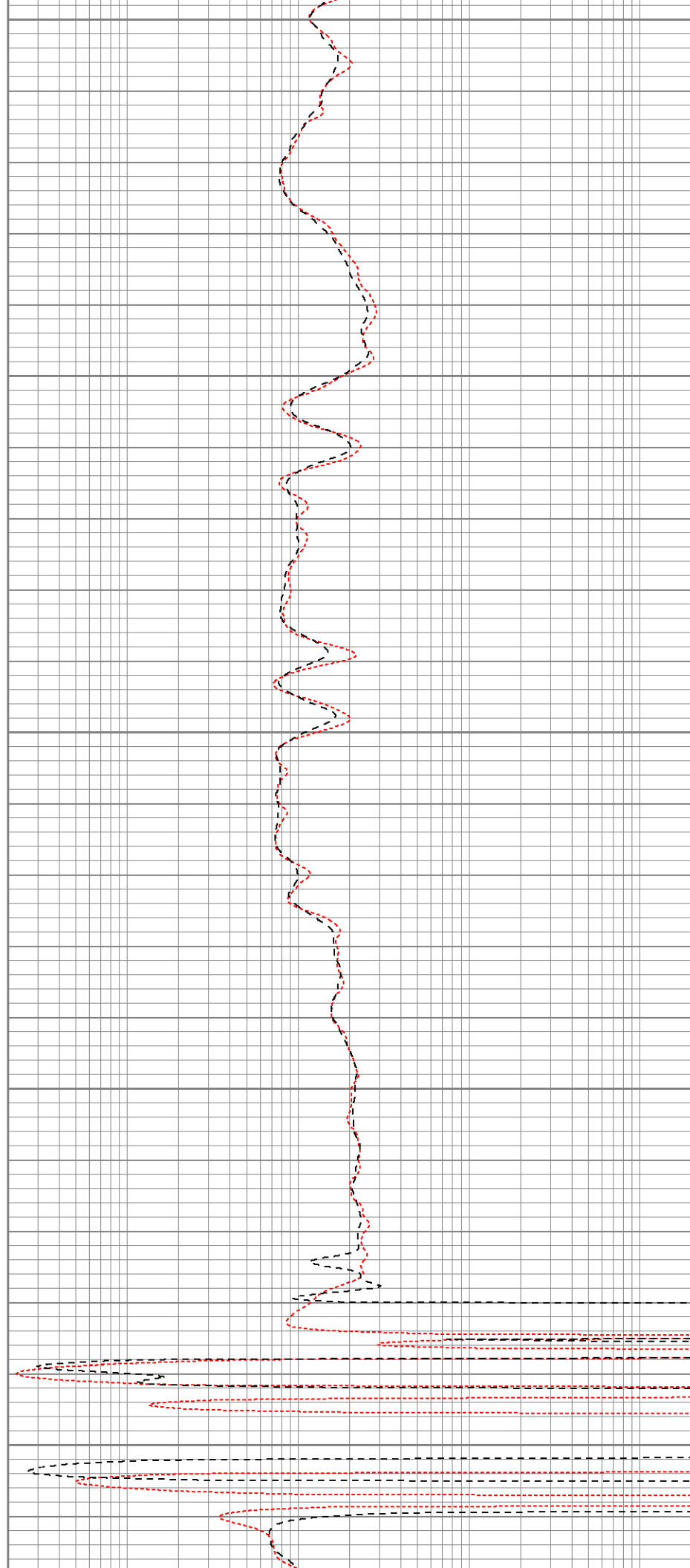
850

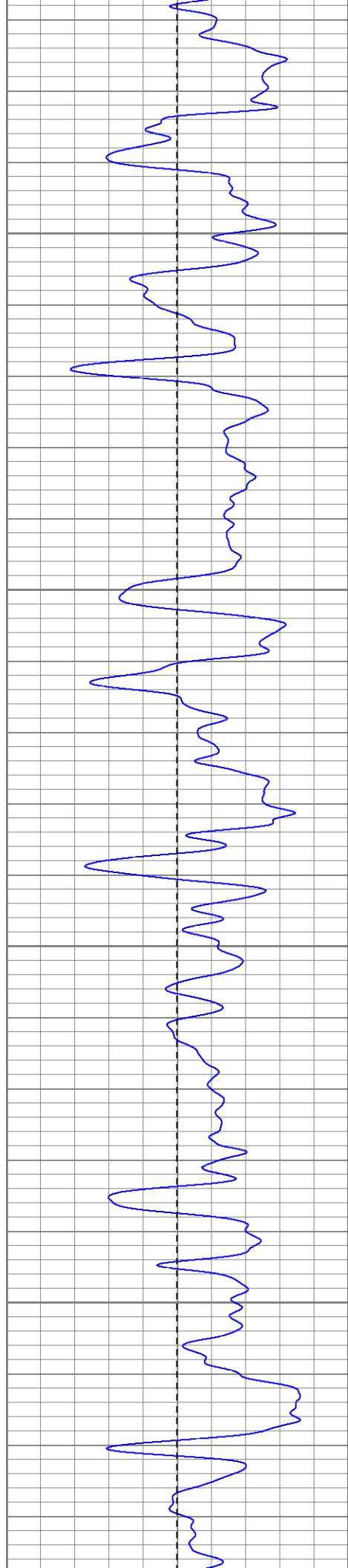
900

950

1000

1050



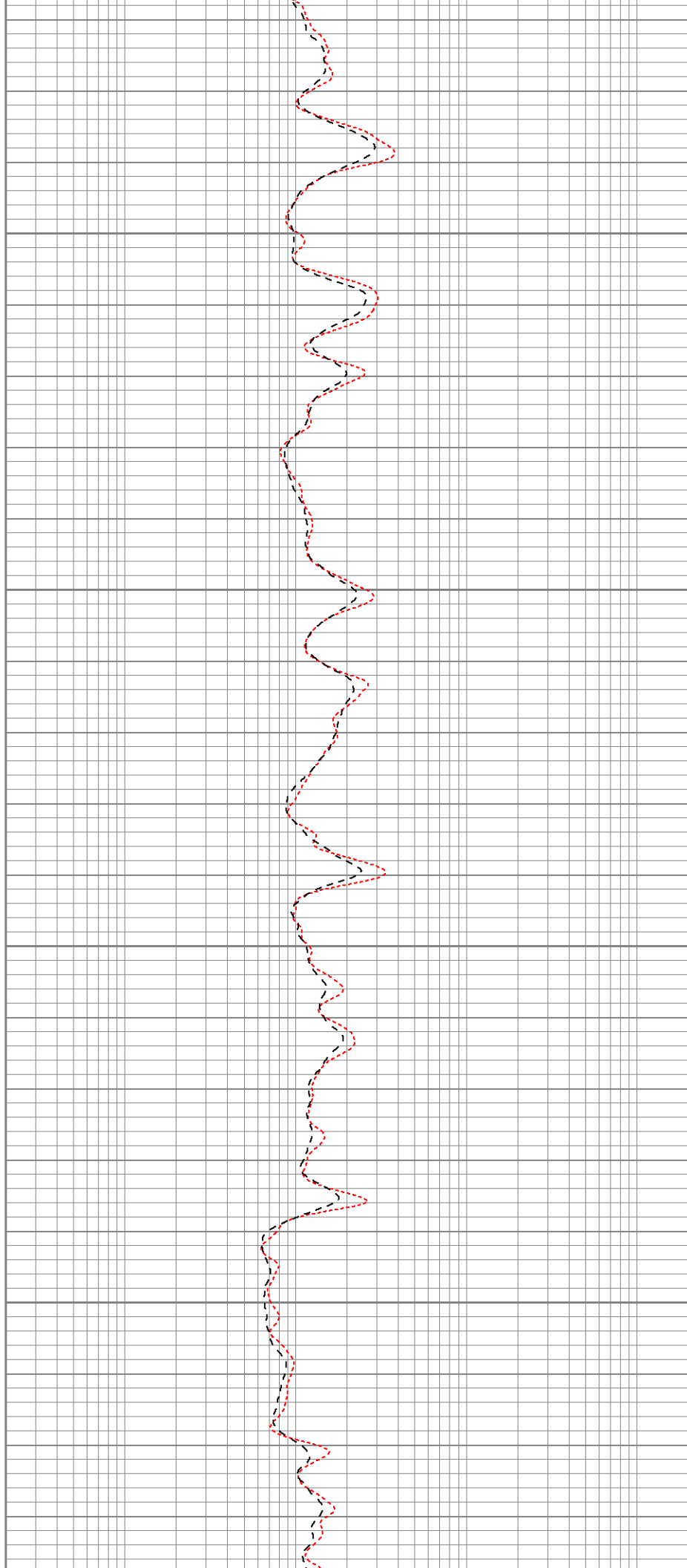


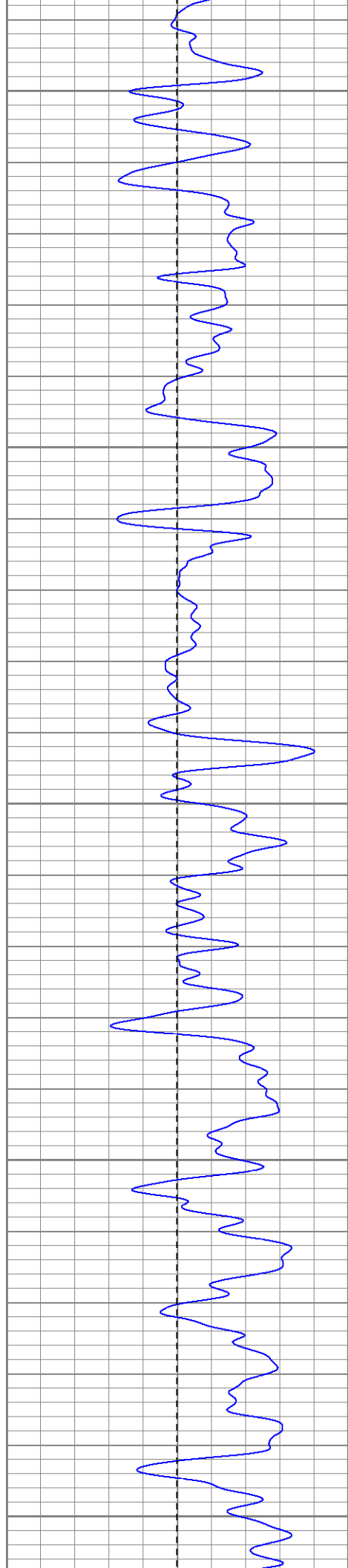
1100

1150

1200

1250





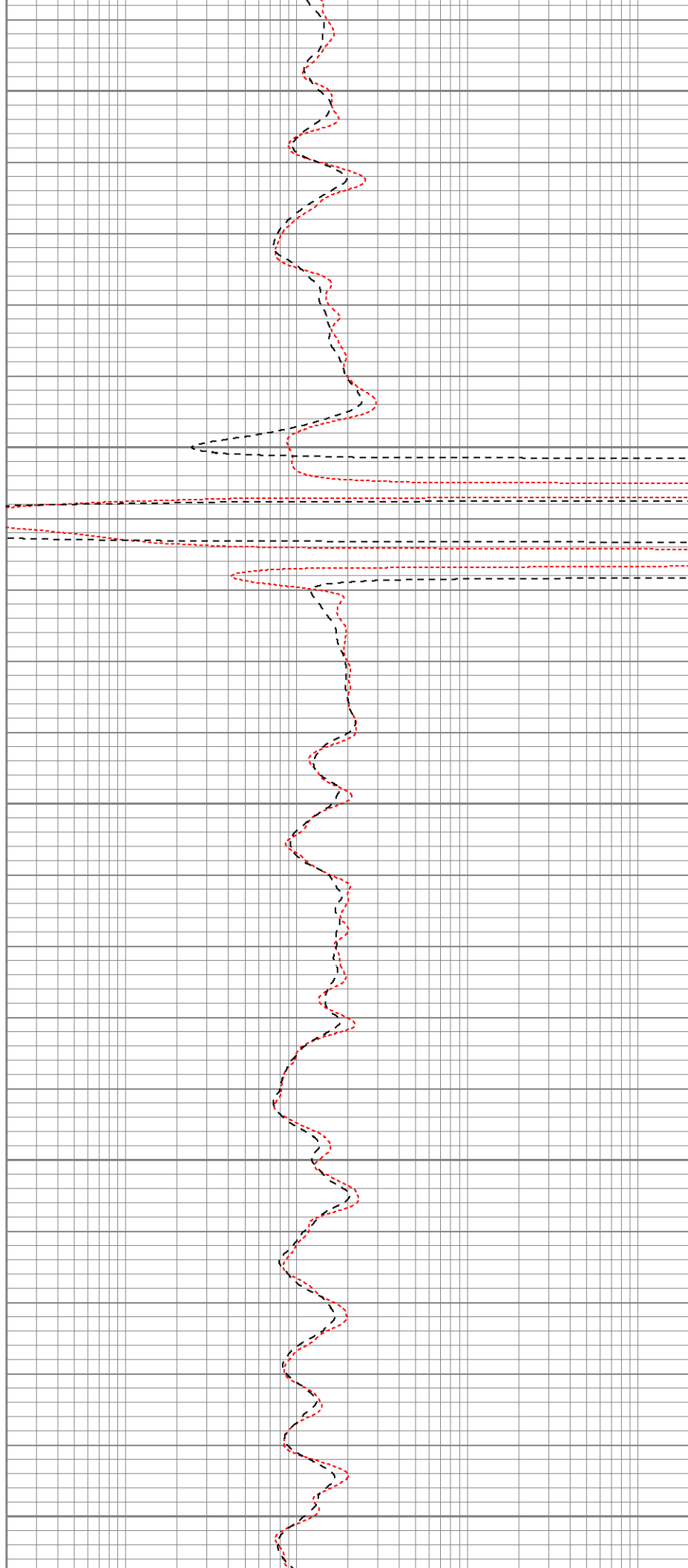
1300

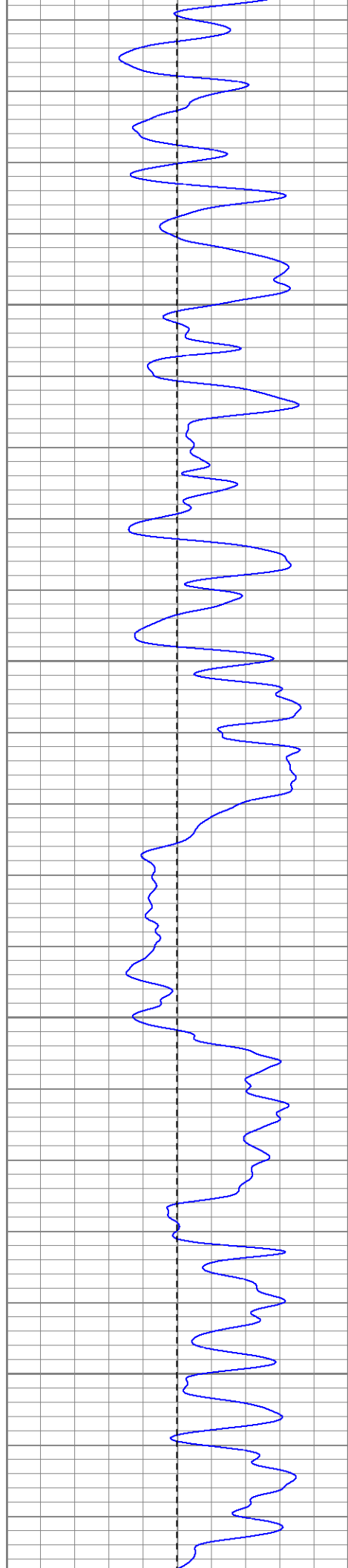
1350

1400

1450

1500



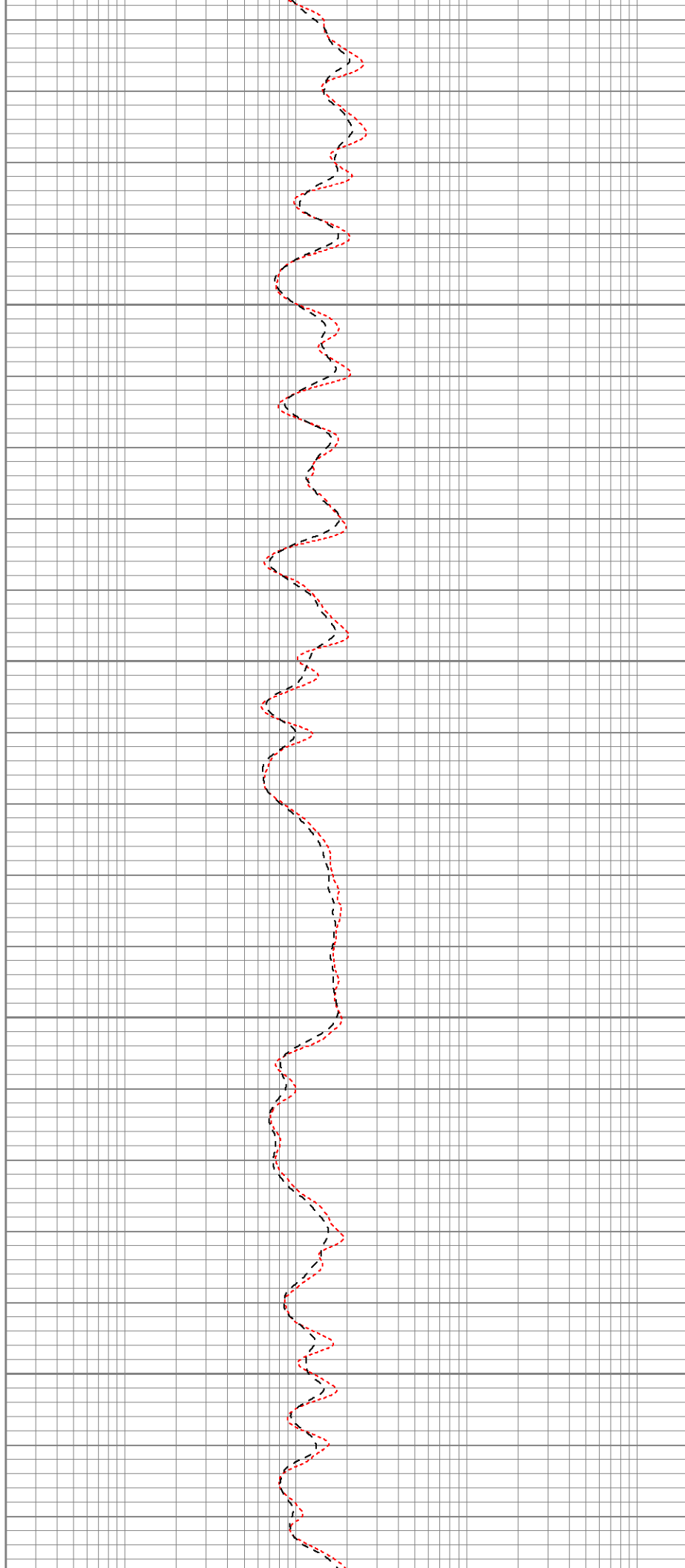


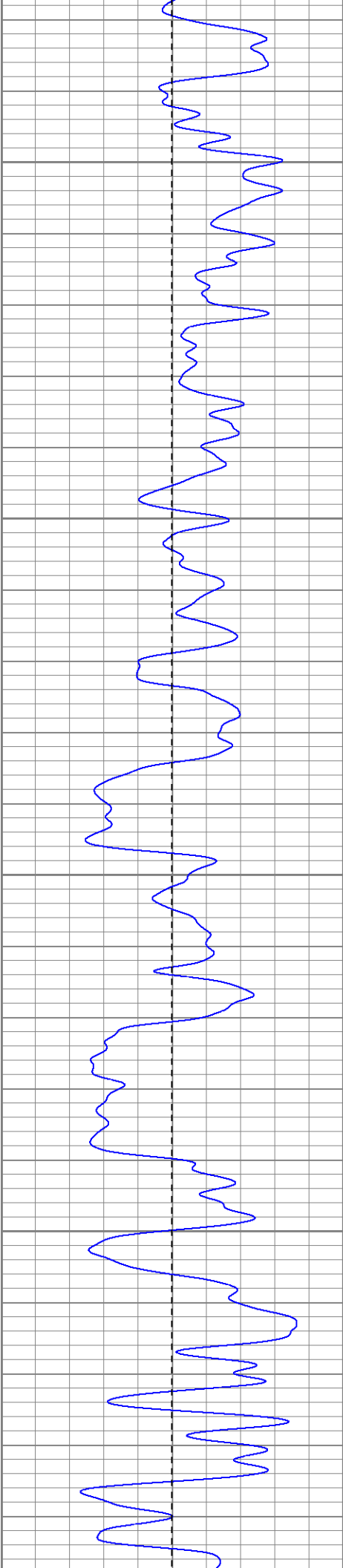
1550

1600

1650

1700



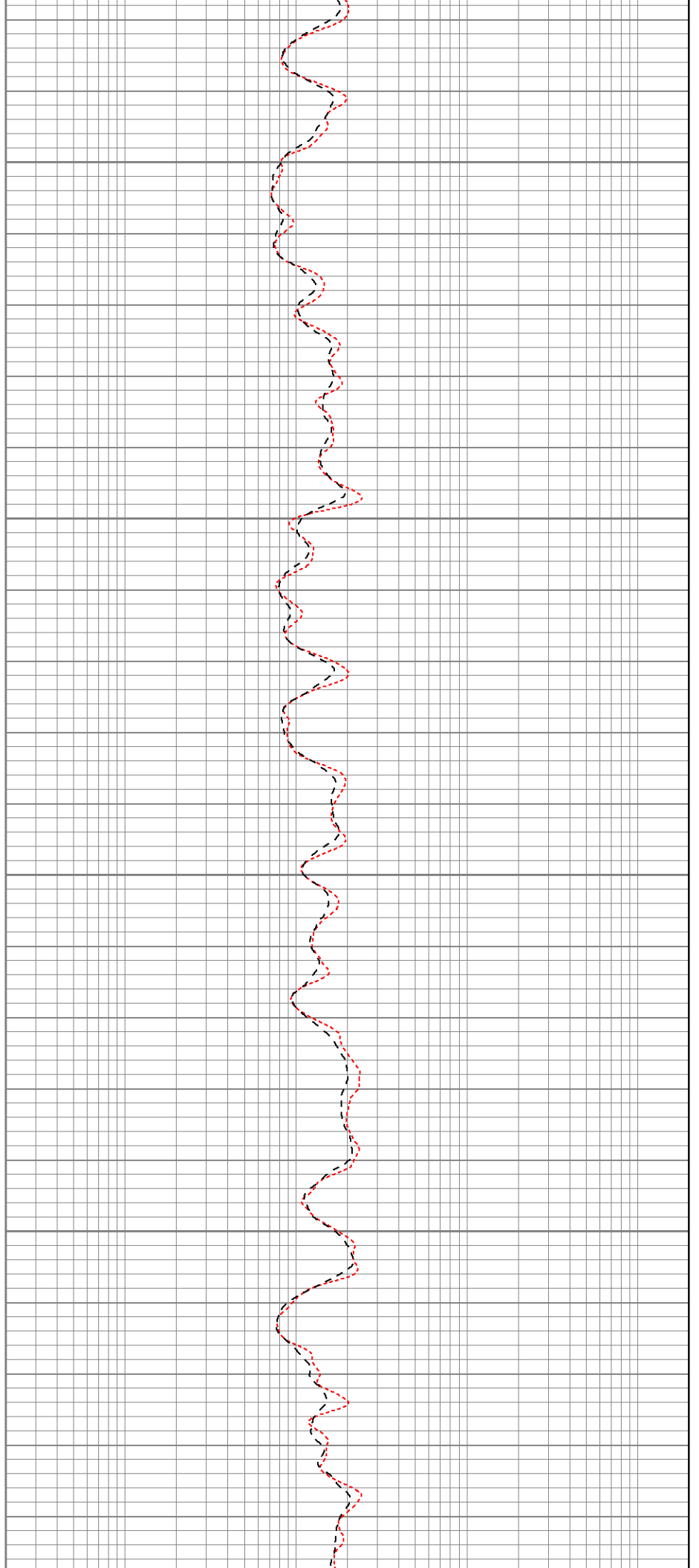


1750

1800

1850

1900



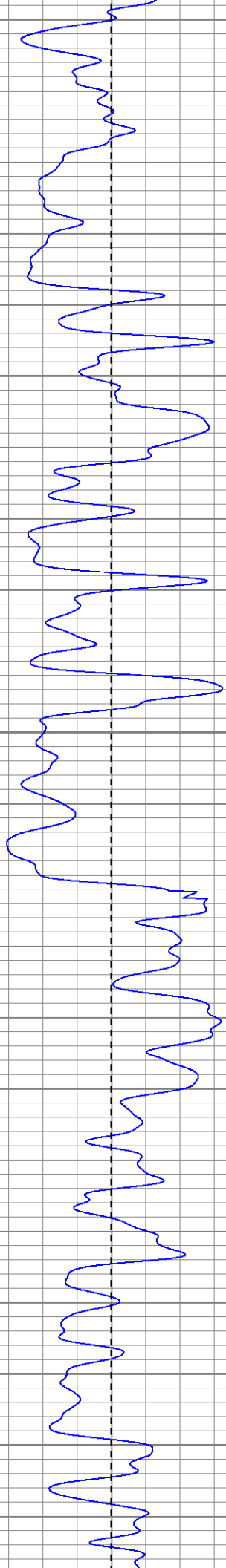
1950

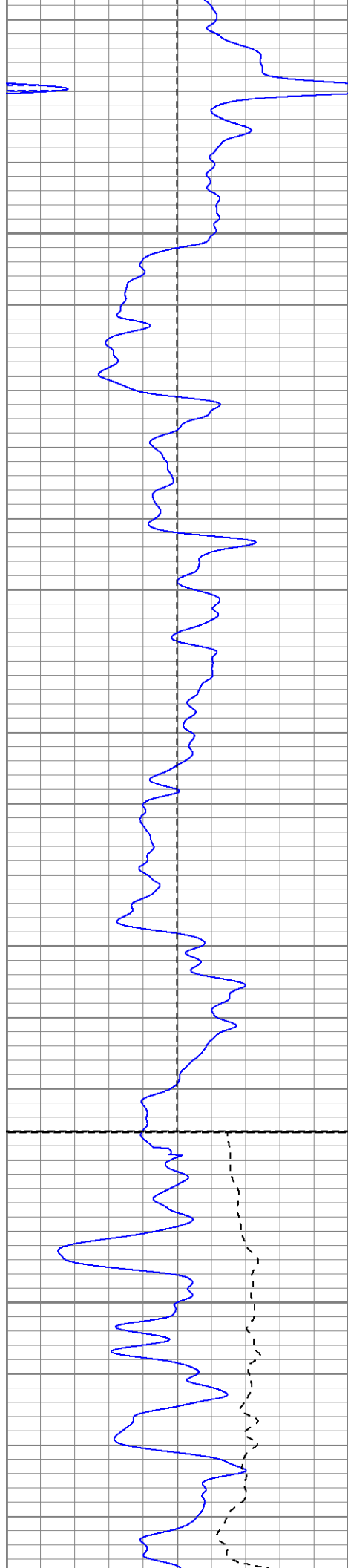
2000

2050

2100

2150





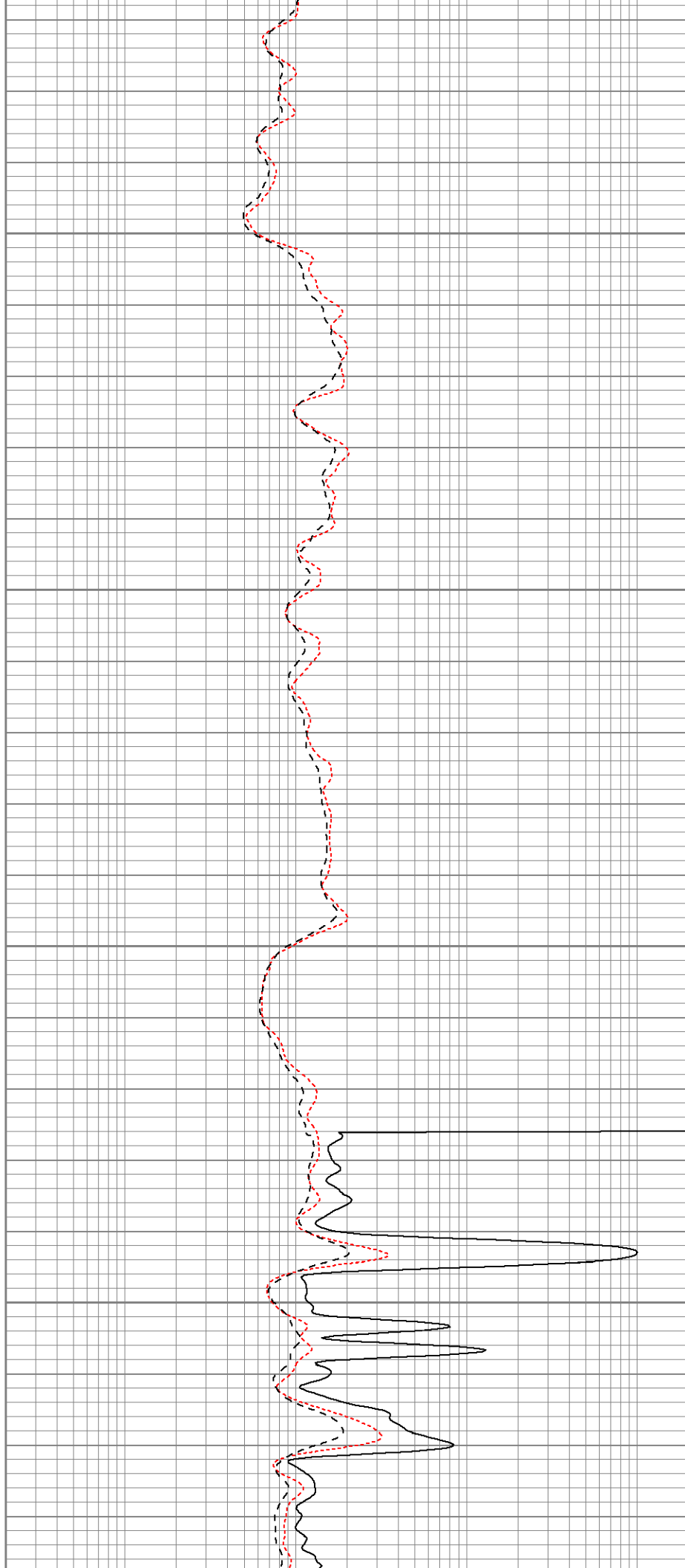
2200

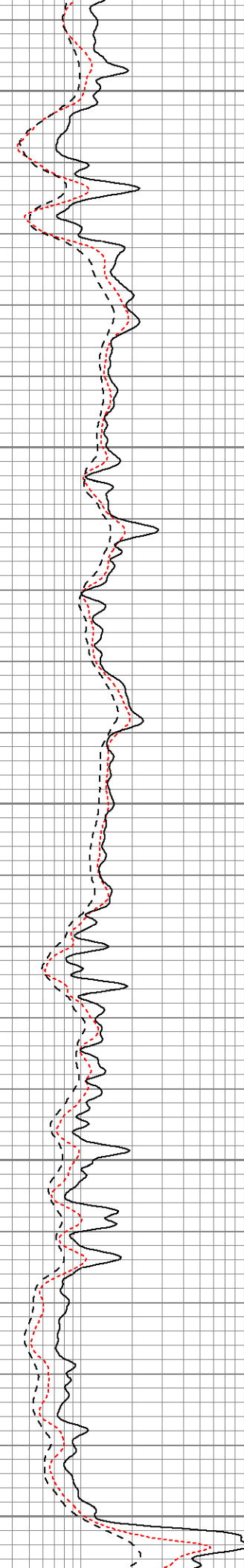
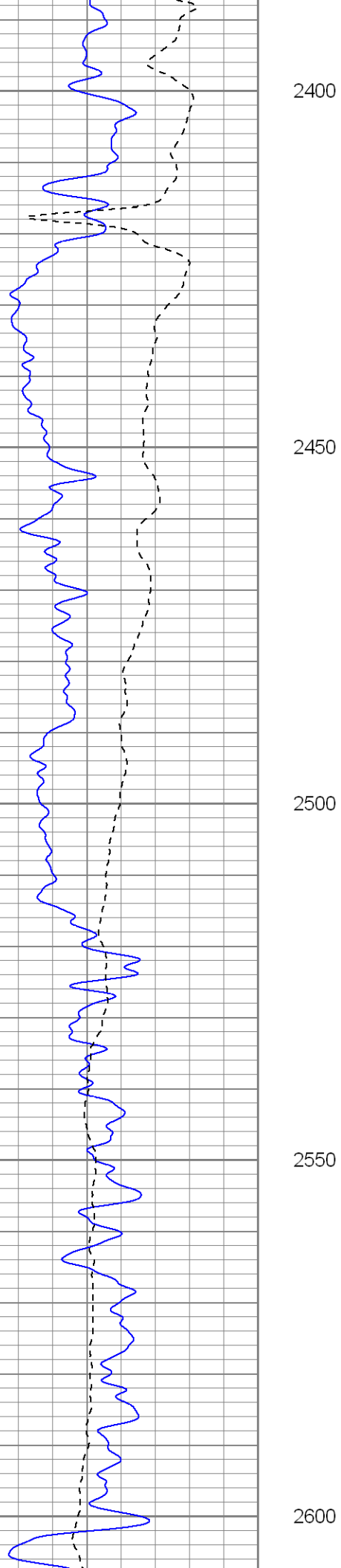
2250

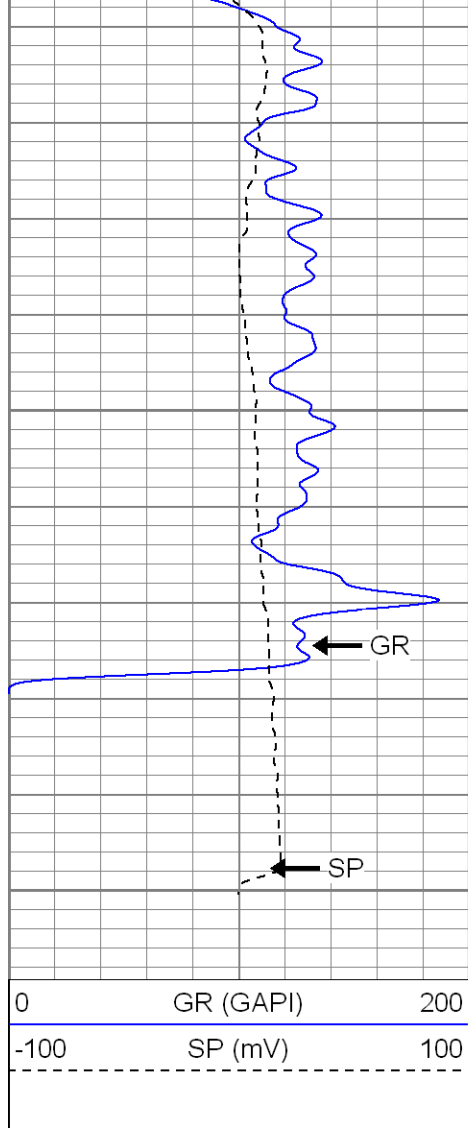
2300

Fluid Level

2350

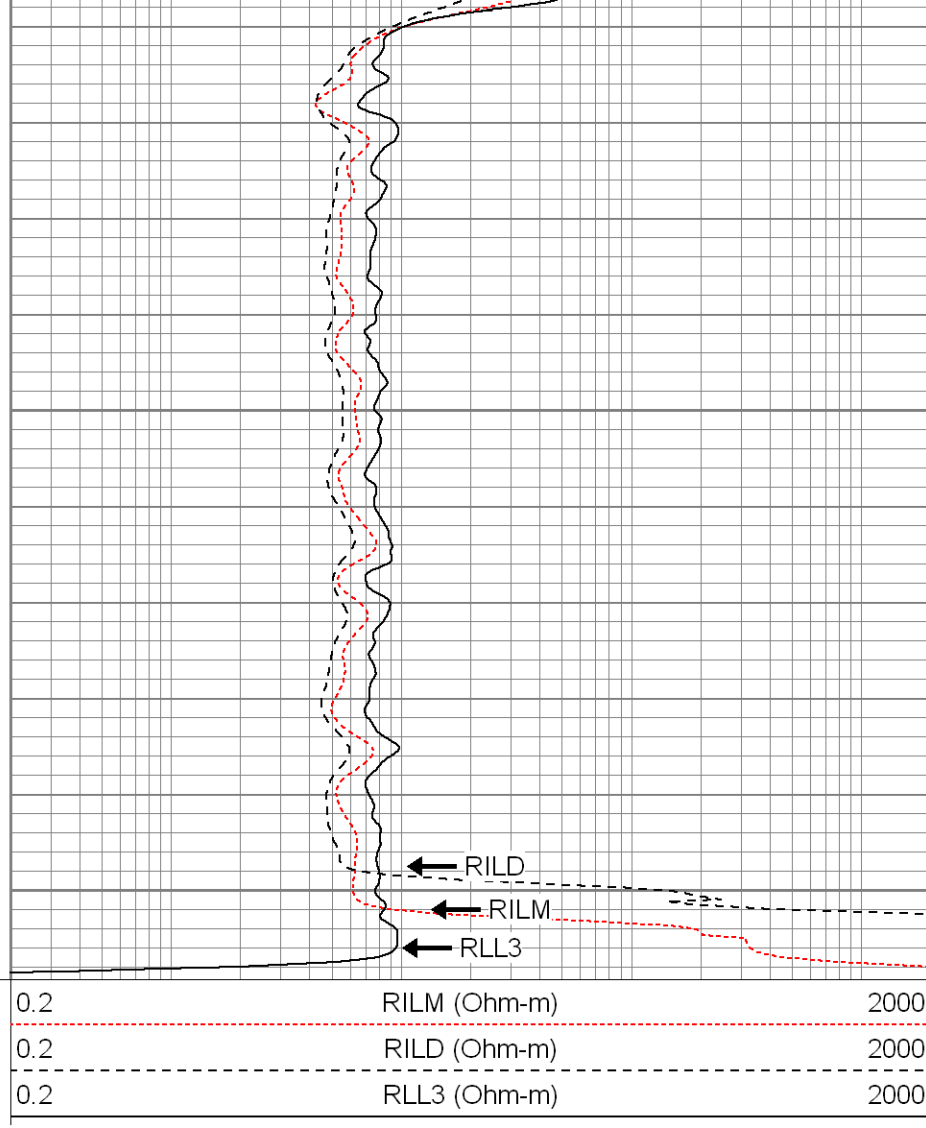






2650

2700



SUPERIOR

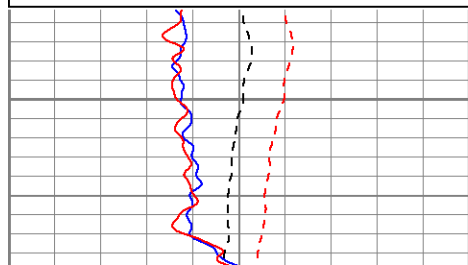
Black Lick, Pa.
Mercer, Pa.
Wooster, Oh.
Cleveland, Ok.
Trinidad, Co.

Repeat Section

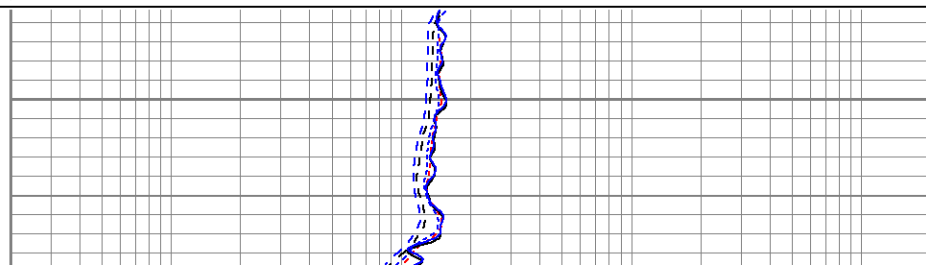
Database File: xtoac2904.db
Dataset Pathname: pass1.1
Presentation Format: dil
Dataset Creation: Thu Aug 16 20:29:01 2007 by Calc Open-Cased 061129
Charted by: Depth in Feet scaled 1:240

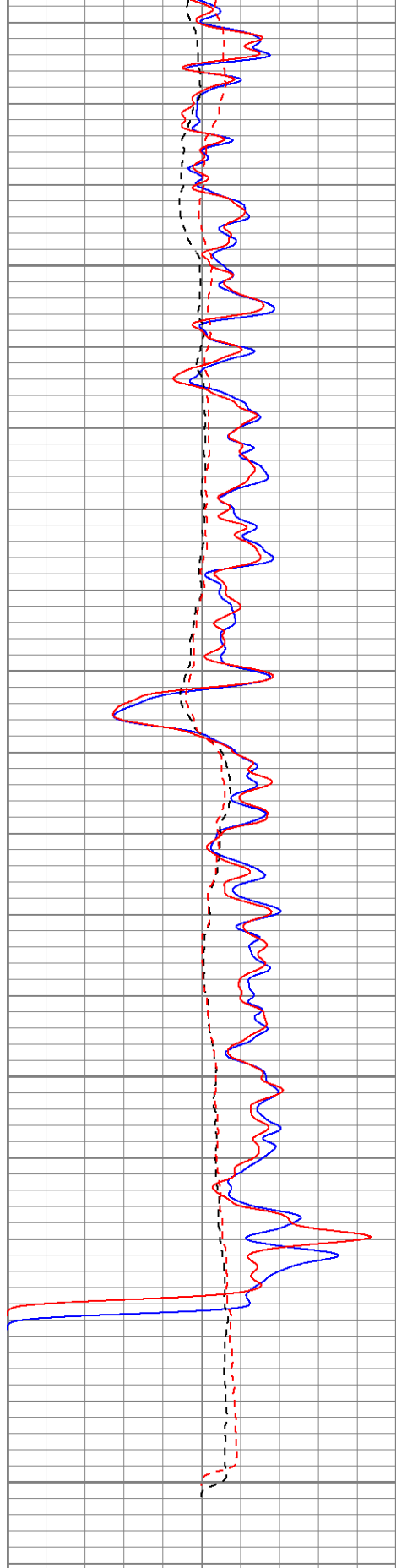
0	GR (GAPI)	200
-100	SP (mV)	100
0	GR-repeat (GAPI)	200
-100	SP-repeat (mV)	100

0.2	RILM (Ohm-m)	2000
0.2	RILD (Ohm-m)	2000
0.2	RLL3 (Ohm-m)	2000
0.2	RLL3-repeat (Ohm-m)	2000
0.2	RILM-repeat (Ohm-m)	2000
0.2	RILD-repeat (Ohm-m)	2000

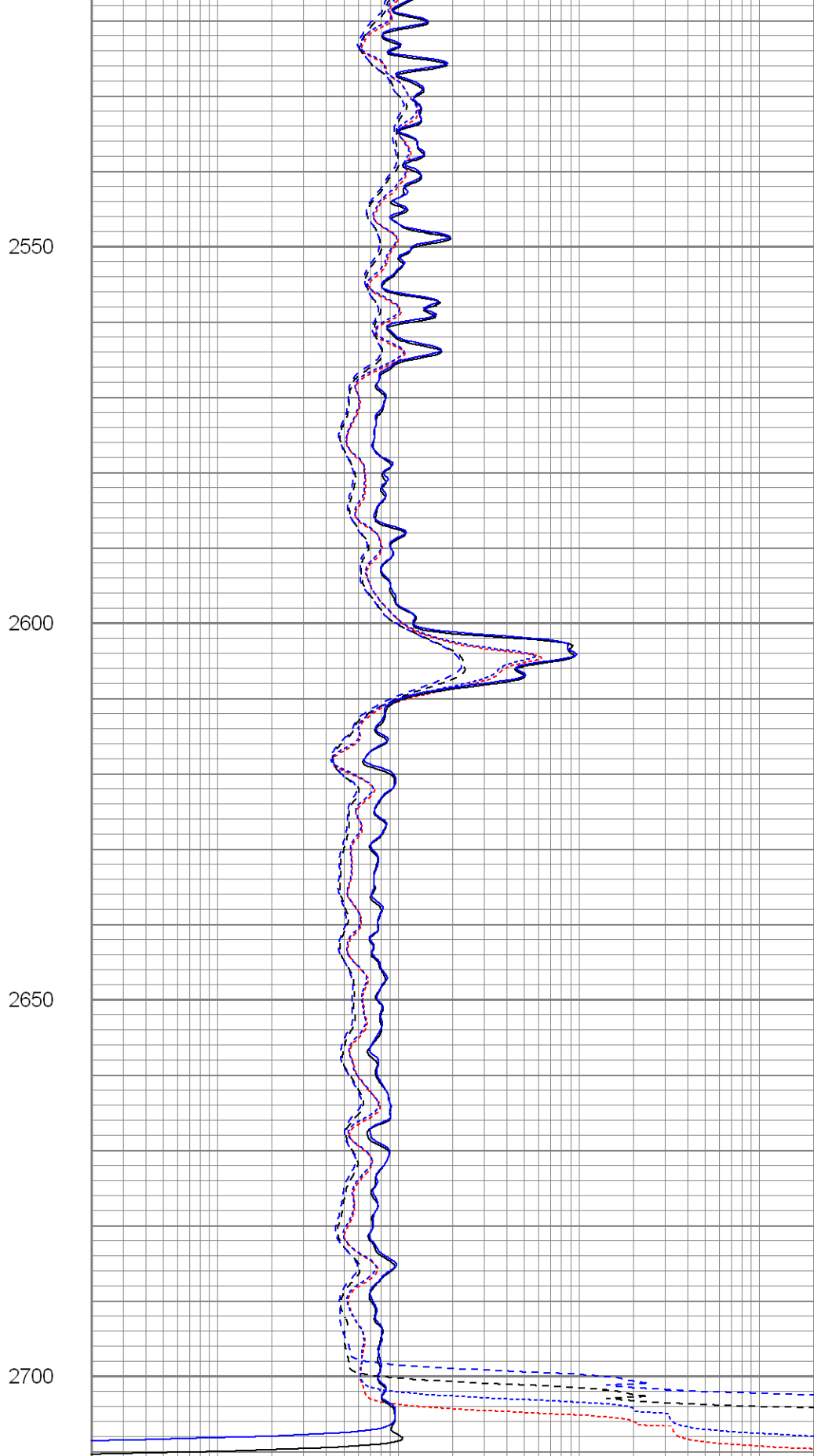


2500





0	GR (GAPI)	200
-100	SP (mV)	100
0	GR-repeat (GAPI)	200
-100	SP-repeat (mV)	100



0.2	RILM (Ohm-m)	2000
0.2	RILD (Ohm-m)	2000
0.2	RLL3 (Ohm-m)	2000
0.2	RLL3-repeat (Ohm-m)	2000
0.2	RILM-repeat (Ohm-m)	2000
0.2	RILD-repeat (Ohm-m)	2000

Calibration Report

Database File: xtoac2904.db
 Dataset Pathname: pass2
 Dataset Creation: Thu Aug 16 19:00:18 2007 by Log Open-Cased 061129

Dual Induction Calibration Report

Serial-Model: 5375-G
 Surface Cal Performed: Wed Aug 08 13:10:57 2007
 Downhole Cal Performed: Thu Aug 09 09:45:00 2007

Surface Calibration

Loop:	Readings			References			Results	
	Air	Loop		Air	Loop		m	b
Deep	0.002	0.622	V	0.000	500.000	mmho-m	807.380	-1.996
Medium	0.004	0.745	V	0.000	550.000	mmho-m	742.488	-3.313
Internal:	Zero	Cal		Zero	Cal		m	b
Deep	0.002	0.621	V	0.000	500.000	mmho-m	807.436	-1.769
Medium	0.004	0.745	V	0.000	550.000	mmho-m	742.818	-3.183

Downhole Calibration

Internal:	Readings			References			Results	
	Zero	Cal		Zero	Cal		m	b
Deep	0.000	0.000	mmho-m	-0.227	499.739	mmho-m	1.000	0.000
Medium	0.000	0.000	mmho-m	-0.131	549.624	mmho-m	1.000	0.000
Shallow	2.506	0.009	V	500.000	2.000	Ohm-m	105.000	0.000

Compensated Density Calibration Report

Serial-Model: 2118-poilex
 Source / Verifier: /
 Master Calibration Performed: Thu Aug 02 13:55:23 2007

Master Calibration







	Density		Far Detector	Near Detector	
Magnesium	1.710	g/cc	665.94	685.05	cps
Aluminum	2.590	g/cc	149.68	463.33	cps
Spine Angle = 75.32			Density/Spine Ratio = 0.570		
	Size		Reading		
Small Ring	7.85	in	4.25	V	
Large Ring	14.00	in	9.25	V	

Gamma Ray Calibration Report

Serial Number: 2001
 Tool Model: OH
 Performed: Wed Aug 08 12:47:02 2007

Calibrator Value: 1.0 GAPI

Neutron Calibration Report		
Serial Number:	5145	
Tool Model:	G	
Performed:	Wed Aug 08 10:32:23 2007	
Calibrator Value:	1200	NAPI
Calibrator Reading:	1700	cps
Sensitivity:	1	NAPI/cps

Sensor	Offset (ft)	Schematic	Description	Len (ft)	OD (in)	Wt (lb)
NEU	37.19		None	0.75	1.50	5.00
			NEU-G (5145) Gearhart Epithermal	5.75	3.50	85.00
GR	31.62		GR-OH (2001) SIE	3.50	3.25	40.00
LSD	23.45		CDL-poilex (2118)	8.79	4.00	275.00
DCAL	23.04					
SSD	22.91					
CILD	10.60		DIL-G (5375) Gearhart	20.83	4.00	345.00
SP	10.60					
CILM	6.89					
RLL3	1.70					

Dataset:	xtoac2904.db: field/well/run1/pass2
Total Length:	39.62 ft
Total Weight:	750.00 lb
O.D.	4.00 in