

# BLANCO

Geological Services LLC

Scale 1:240 (5"=100') Imperial

Well Name: Cordillera34-7  
Location: SW/SE Sec.7 T32S R68W  
Licence Number: 05-071-08552-00  
Spud Date: 10/24/05  
Surface Coordinates: 598 FSL 1770 FEL

Region: Las Animas County  
Drilling Completed: Purgatoire River  
10/27/05

## Bottom Hole Coordinates:

Ground Elevation (ft): 8325' K.B. Elevation (ft): 8329'  
Logged Interval (ft): 835' To: 3490' Total Depth (ft): 3490'  
Formation: Poison Canyon / Raton / Vermejo / Trinidad  
Type of Drilling Fluid: Mud Motor - Tri Cone

Printed by STRIP.LOG from WellSight Systems 1-800-447-1534 [www.WellSight.com](http://www.WellSight.com)

## OPERATOR

Company: Pioneer Natural Resources USA, Inc.  
Address: 1401 17th Street Suite 1200  
Denver CO 80202

## GEOLOGIST

Name: Robert Wick / Robert Ott  
Company: BLANCO Geological Services LLC  
Address: 806 Robinson  
Trinidad CO 81082  
(719) 846-3364

## Rig

Pense Drilling Rig #17

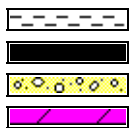
## Comments

8 5/8" #24 Surface Casing set to 819.75'

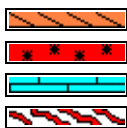
## ROCK TYPES



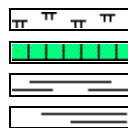
Anhy  
Bent  
Brec  
Cht



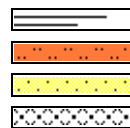
Clyst  
Coal  
Congl  
Dol



Gyp  
Igne  
Lmst  
Meta



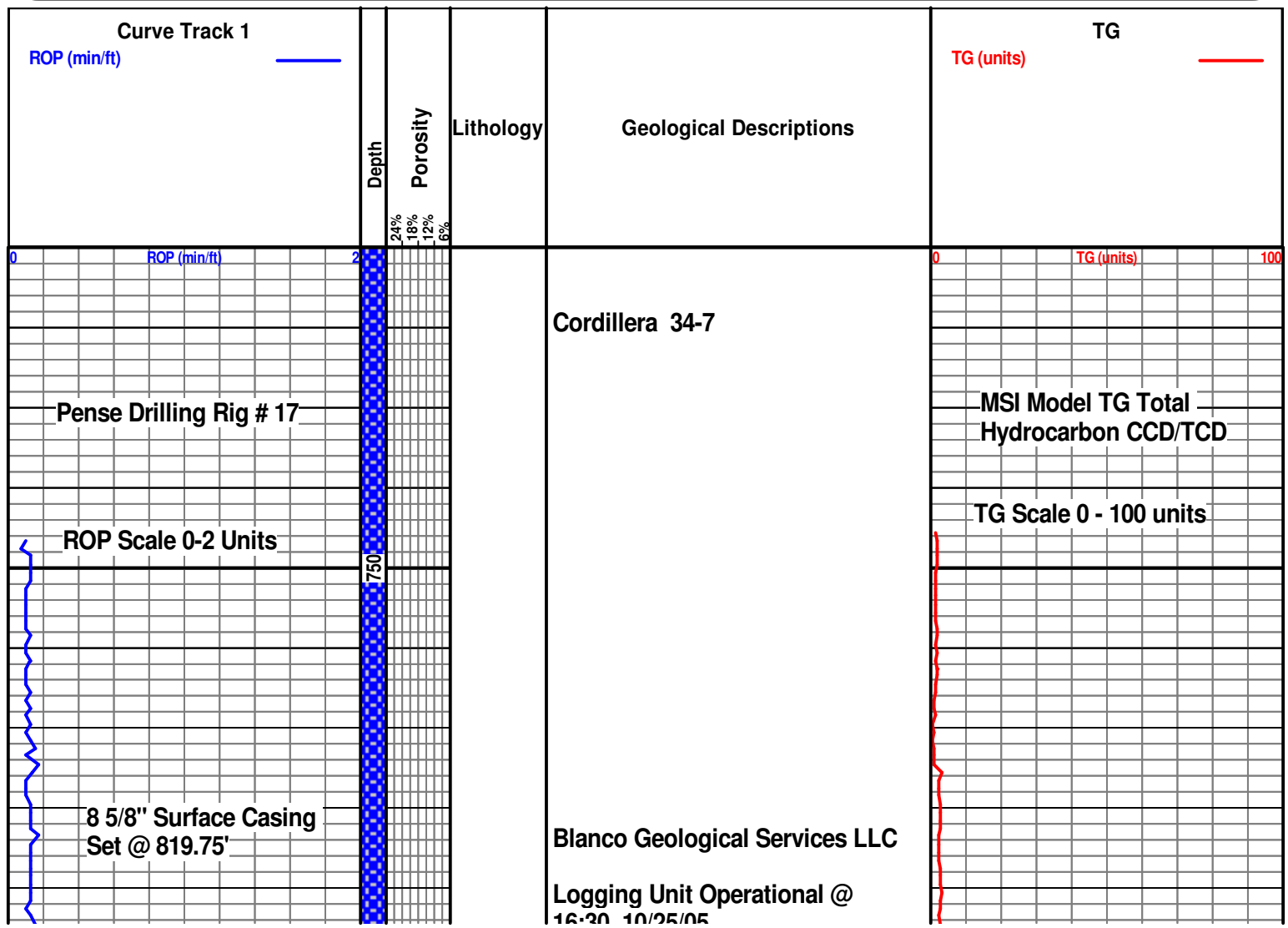
Mrlst  
Salt  
Shale  
Shcol



Shgy  
Sltst  
Ss  
Till

|           |                 |
|-----------|-----------------|
| <b>BS</b> | <b>Boundst</b>  |
| <b>C</b>  | <b>Chalky</b>   |
| <b>CX</b> | <b>CryxIn</b>   |
| <b>E</b>  | <b>Earthy</b>   |
| <b>FX</b> | <b>FinexIn</b>  |
| <b>GS</b> | <b>Grainst</b>  |
| <b>L</b>  | <b>Lithogr</b>  |
| <b>MX</b> | <b>MicroxIn</b> |
| <b>MS</b> | <b>Mudst</b>    |
| <b>PS</b> | <b>Packst</b>   |
| <b>WS</b> | <b>Wackest</b>  |

**Rft**  
**Sidewall**  
**Srfcsg**



10:30 10/25/05

18:15 10/25/2005  
Drilling New  
Formation from 830'  
w/ Mud Motor and  
Tri-Cone

18:00 @ 835'

Began Sampling @ 835'

Poison Canyon Formation

SANDSTONE, clear white, fg-vcg, angular, poorly sorted, unconsolidated, weakly calcareous

SANDSTONE, clear tan grayish, mg-vcg, angular, poorly sorted, unconsolidated, calcareous, PYRITE, CALCITE

SANDSTONE, blue-gray clear white, vfg-mg, angular - sub rounded, poorly sorted, mod - un consolidated

SANDSTONE, tan blue-gray clear, vfg-mg, sub angular - sub rounded, poorly sorted, mod - un consolidated, MICA

SANDSTONE, gray tan, vfg, sub angular - sub rounded, well sorted, well consolidated, SILTSTONE stringers

SILTSTONE, tan lt-gray, well indurated, blocky - flakey, velvety, dull, SANDSTONE stringers

SANDSTONE, clear milky, cg-vcg, angular, poorly sorted, unconsolidated, calcareous

SANDSTONE, milky clear pink, mg-vcg, angular- sub angular, poorly sorted, unconsolidated, SHALE stringers

SILTSTONE, brown blue-gray, well indurated, flakey - sub-blocky, earthy - gritty, dull

SANDSTONE, blue-gray lt-gray, vfg-fg, sub angular - sub rounded, mod sorted, well consolidated, SILTSTONE stringers

SILTSTONE, lt-gray blue-gray, well indurated, flakey - blocky, earthy, dull, SANDSTONE stringers w/ MICA

TG (units)

100

TG (units)

100

