

Patterson

**CEMENT BOND
GAMMA RAY**

Company El Paso E & P Company, L.P.

Well VPR "C"-125

Field Purgatorie River

County Las Animas State CO

Location: API # : 2564' FNL & 2573' FEL

Other Services

SEC 13 TWP 35S RGE 67W

Permanent Datum Ground Level Elevation 7950'

Log Measured From Ground Level

Drilling Measured From Ground Level

Elevation
K.B. -----
D.F. -----
G.L. 7950'

Date 5/10/06

Run Number two

Depth Driller 2424'

Depth Logger 1208'

Bottom Logged Interval 1204'

Top Log Interval Surf.

Open Hole Size 7 7/8"

Type Fluid water

Density / Viscosity ///

Max. Recorded Temp. 128F

Estimated Cement Top 72'

Time Well Ready ROA

Time Logger on Bottom 10:00

Equipment Number T244

Location Trinidad

Recorded By Worley

Witnessed By

Run Number

Bit From To

Size Weight From To

Casing Record Size Wgt/Ft Top Bottom

Surface String 8 5/8" 00 330'

Prot. String

Production String 5 1/2" 00 NA

Liner

Comments

Lorencito Gate, Stay On Main Road, Cross Into New Mexico,
Drive Past A-182 WDW To T, Turn Right
Stay On Road, Dead End On Location.

Patterson

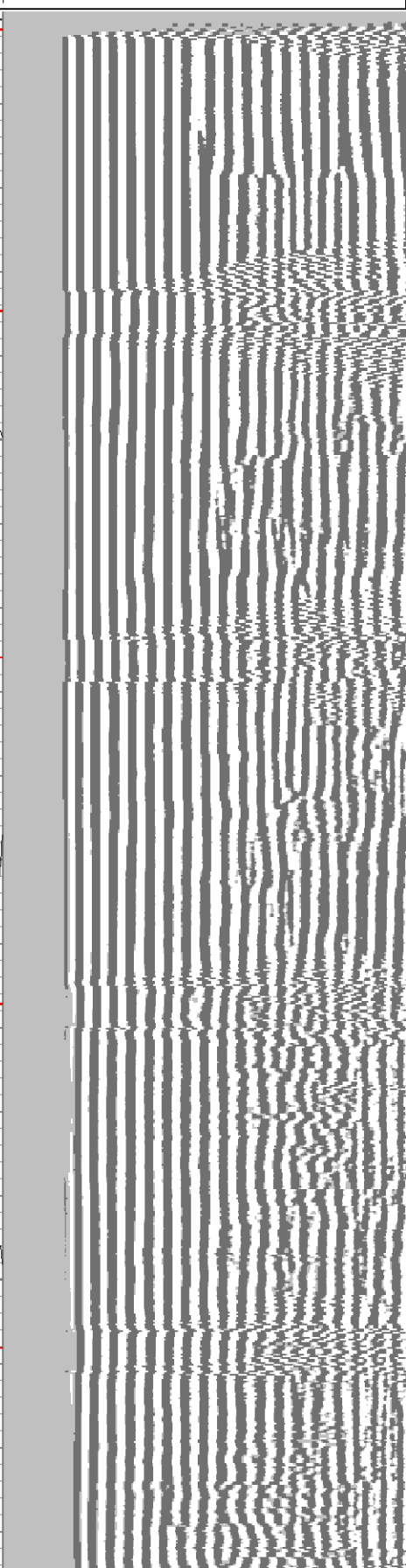
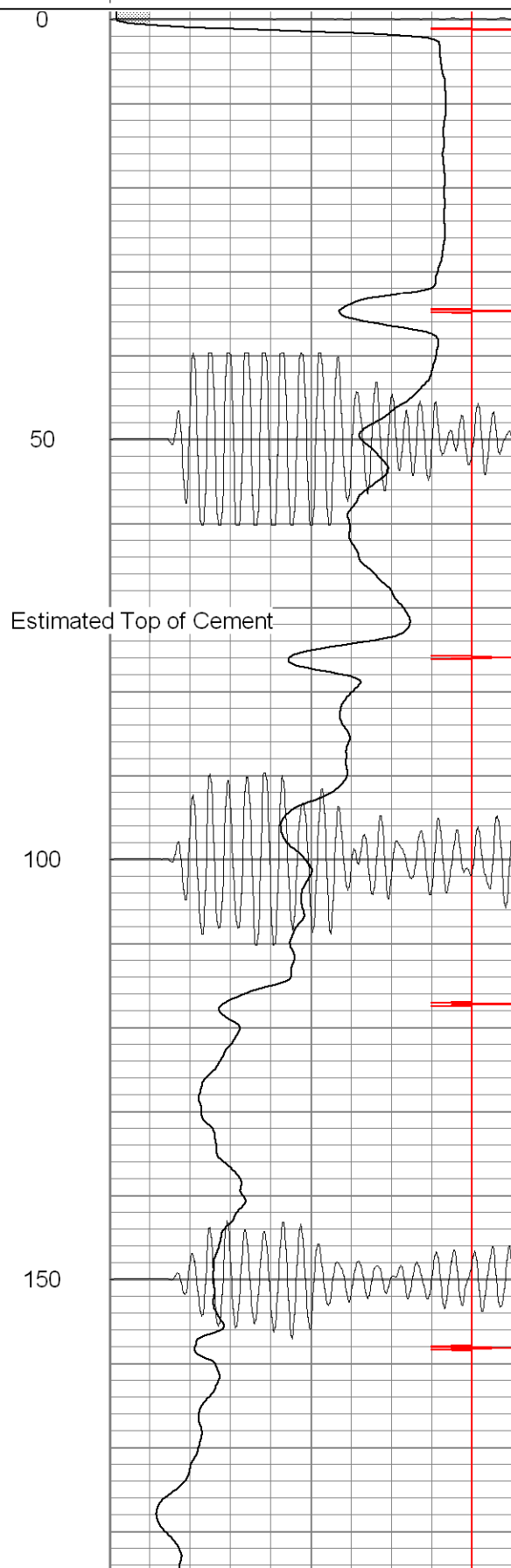
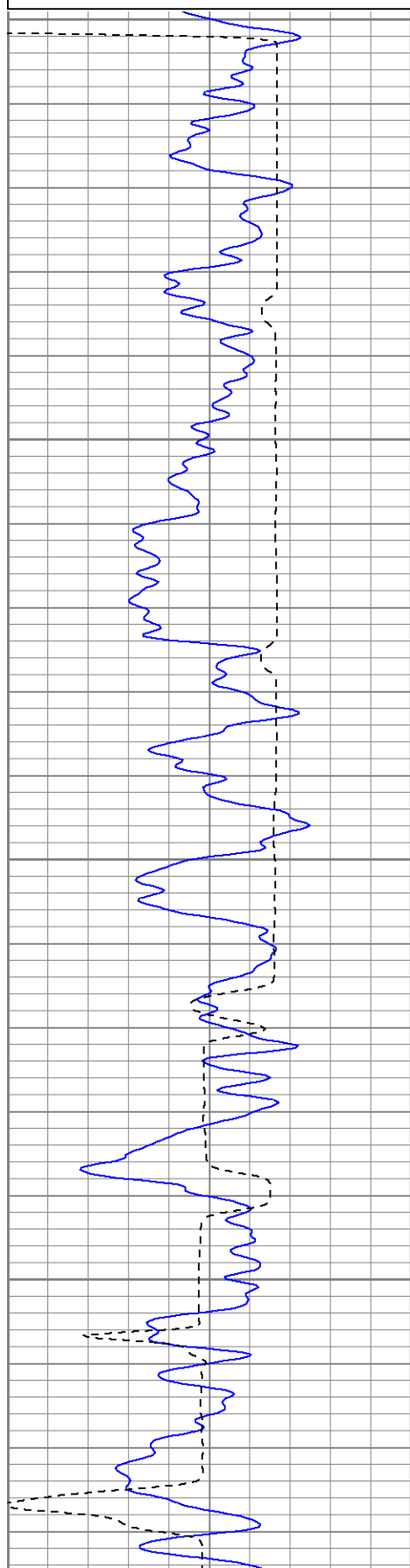
Main Pass

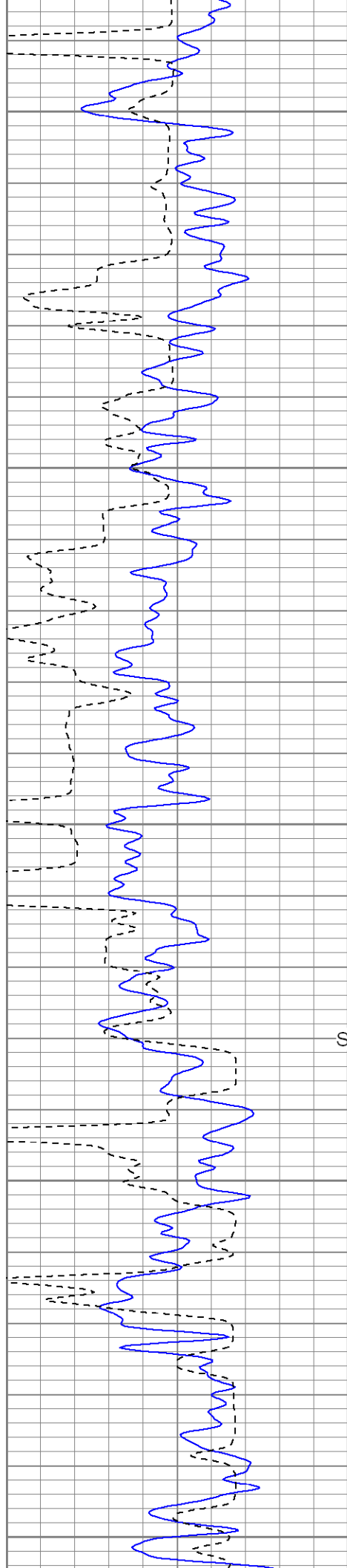
Database File: c:\warrior\data\el paso\vprc125b51006.db
Dataset Pathname: pass2
Presentation Format: cblrt
Dataset Creation: Wed May 10 09:04:25 2006 by Log Warrior 7.0 STD Cas
Charted by: Depth in Feet scaled 1:240

0	GR (GAPI)	200
400	TT3 (usec)	200

0	AMP3 (mV)	100
18	CCL	-2
200	CBL5	1200

200	Variable Density	1200
-----	------------------	------





200

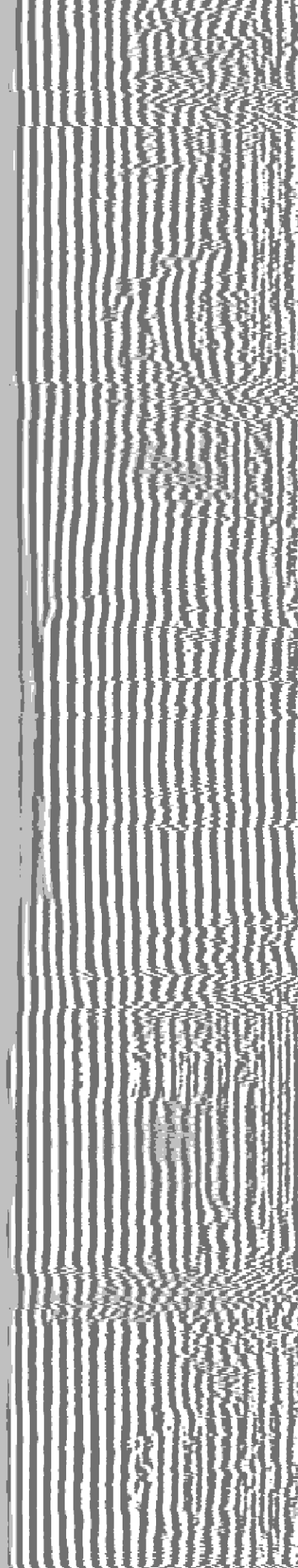
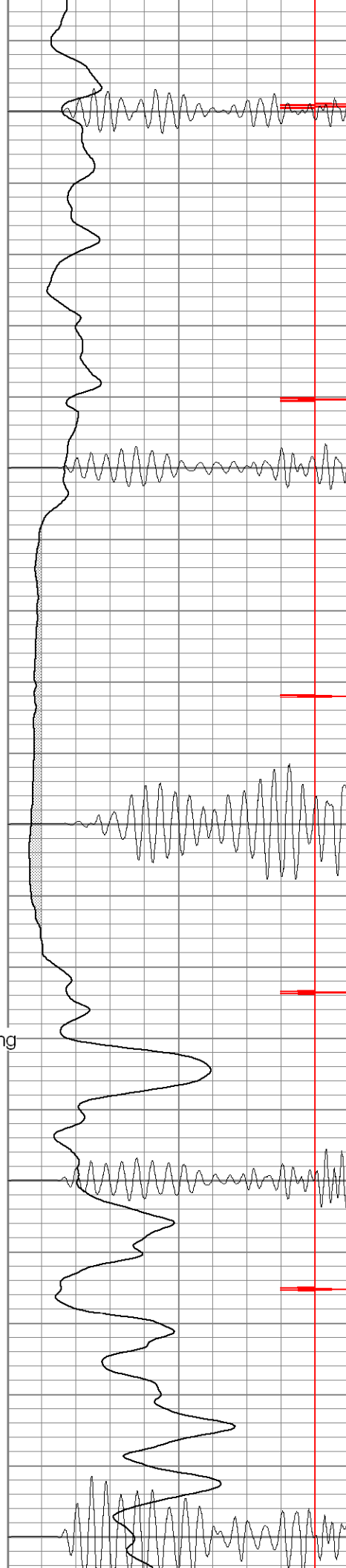
250

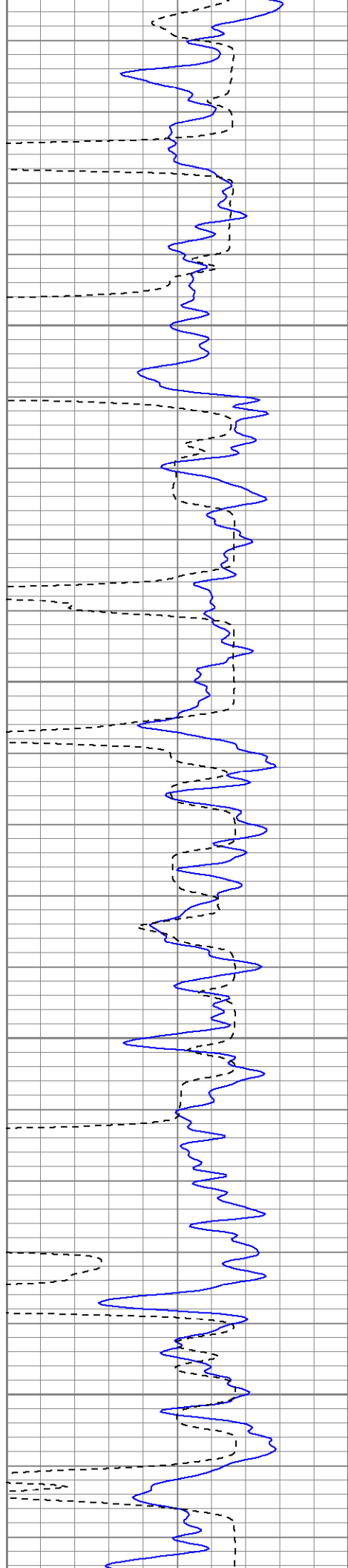
300

Surface Casing

350

400



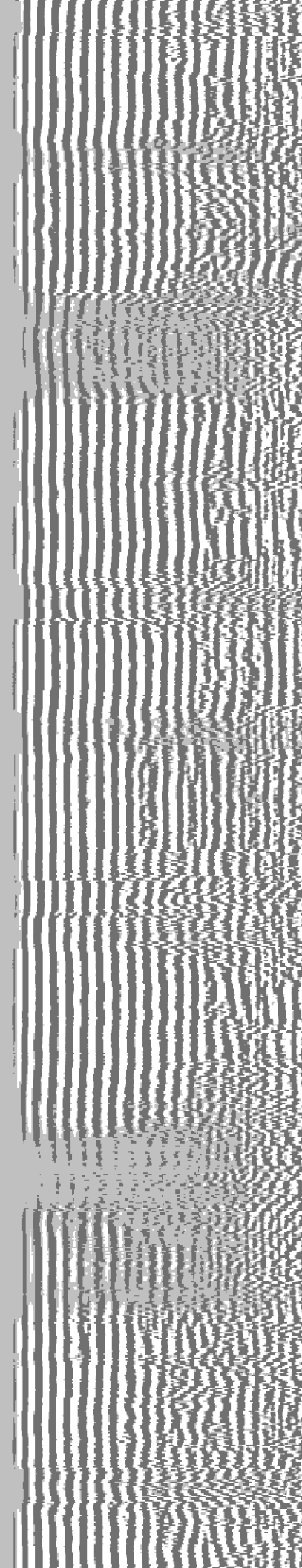
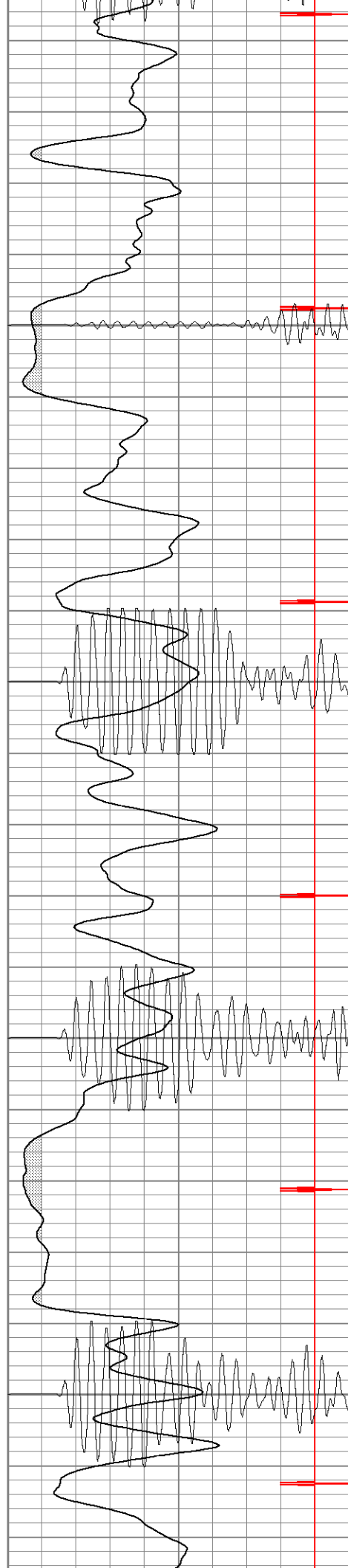


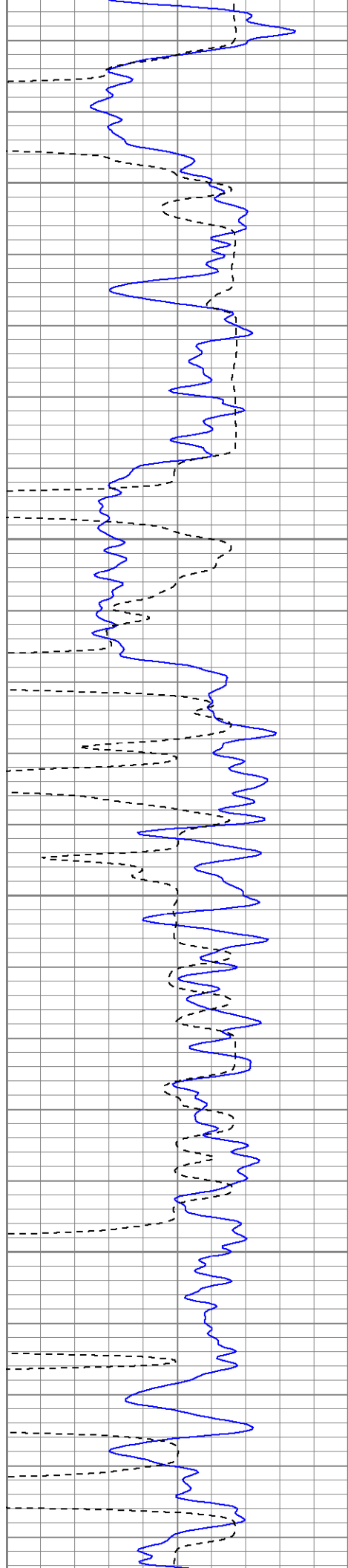
450

500

550

600



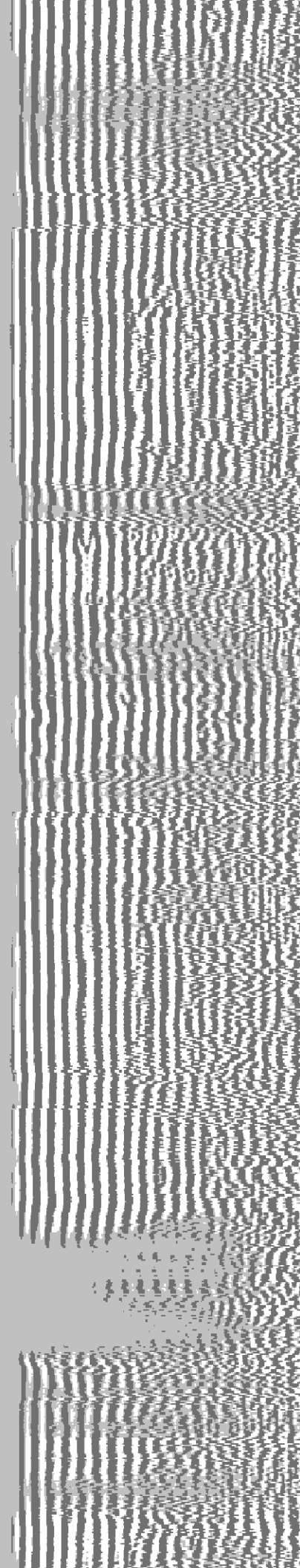
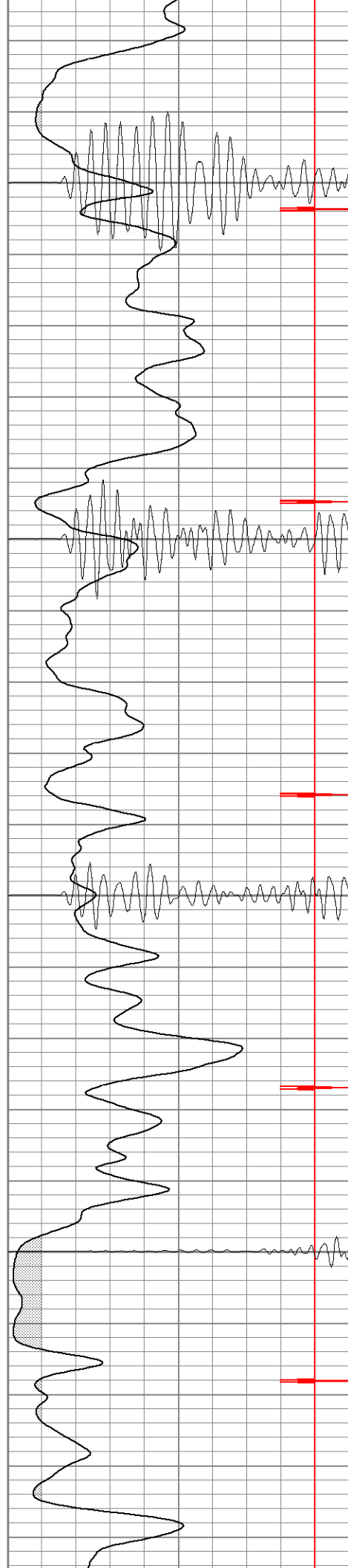


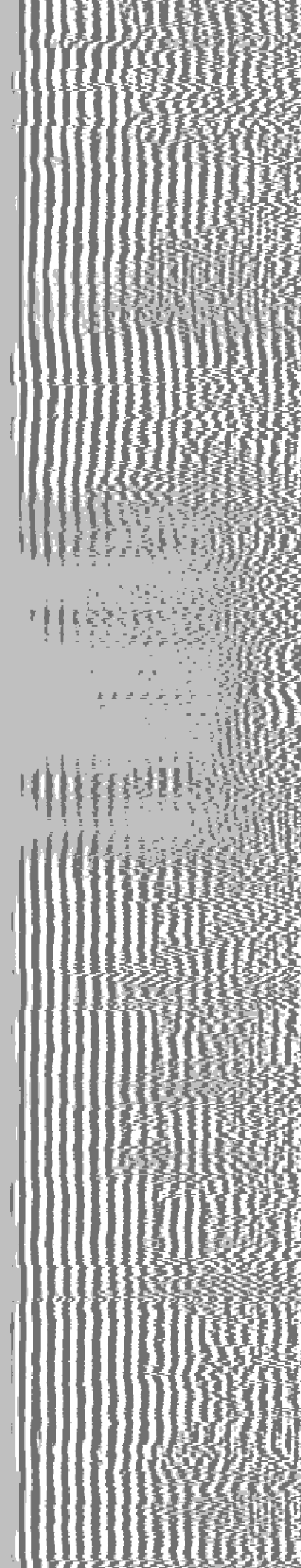
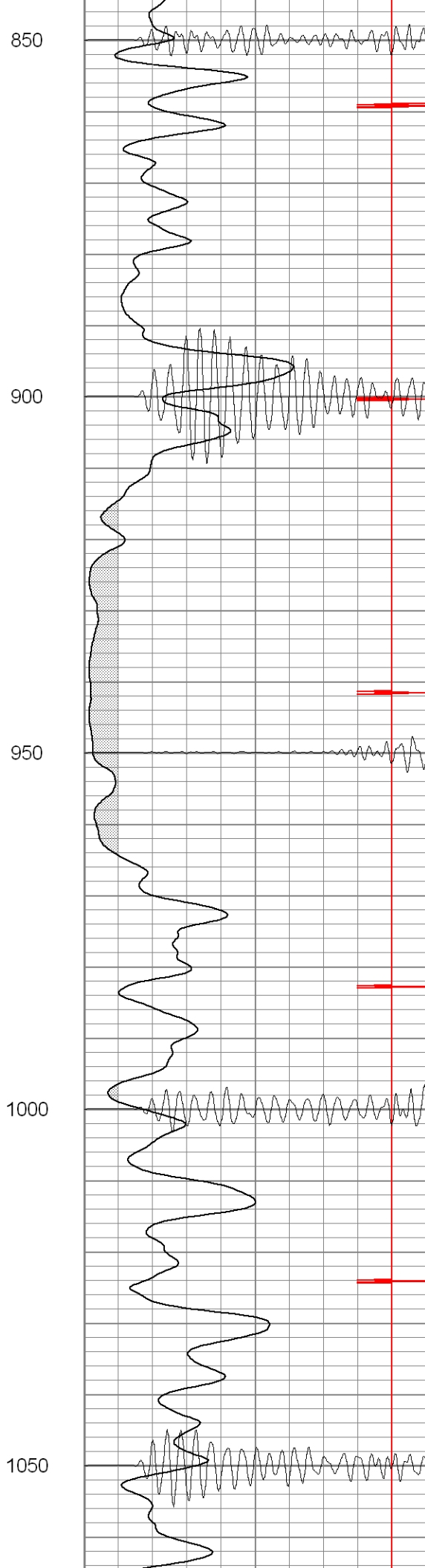
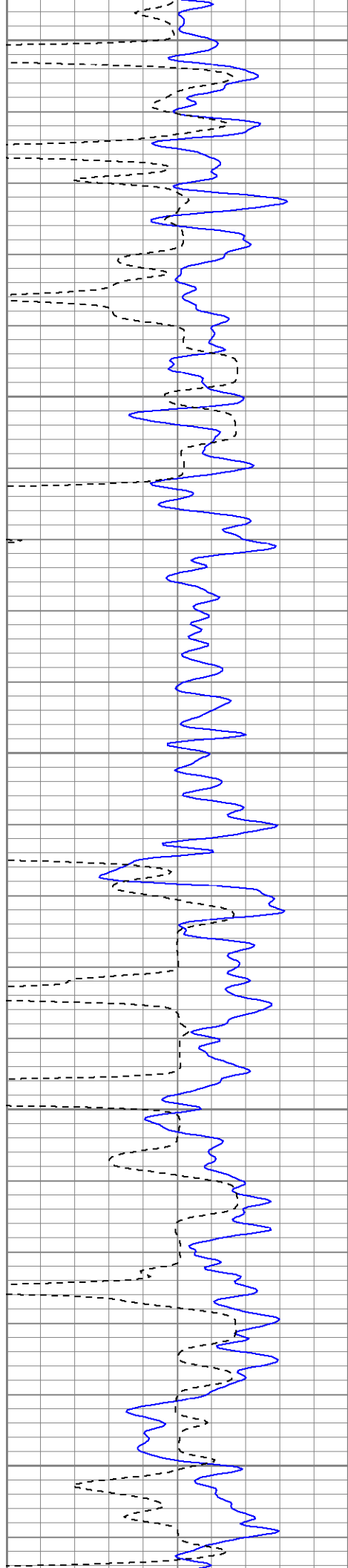
650

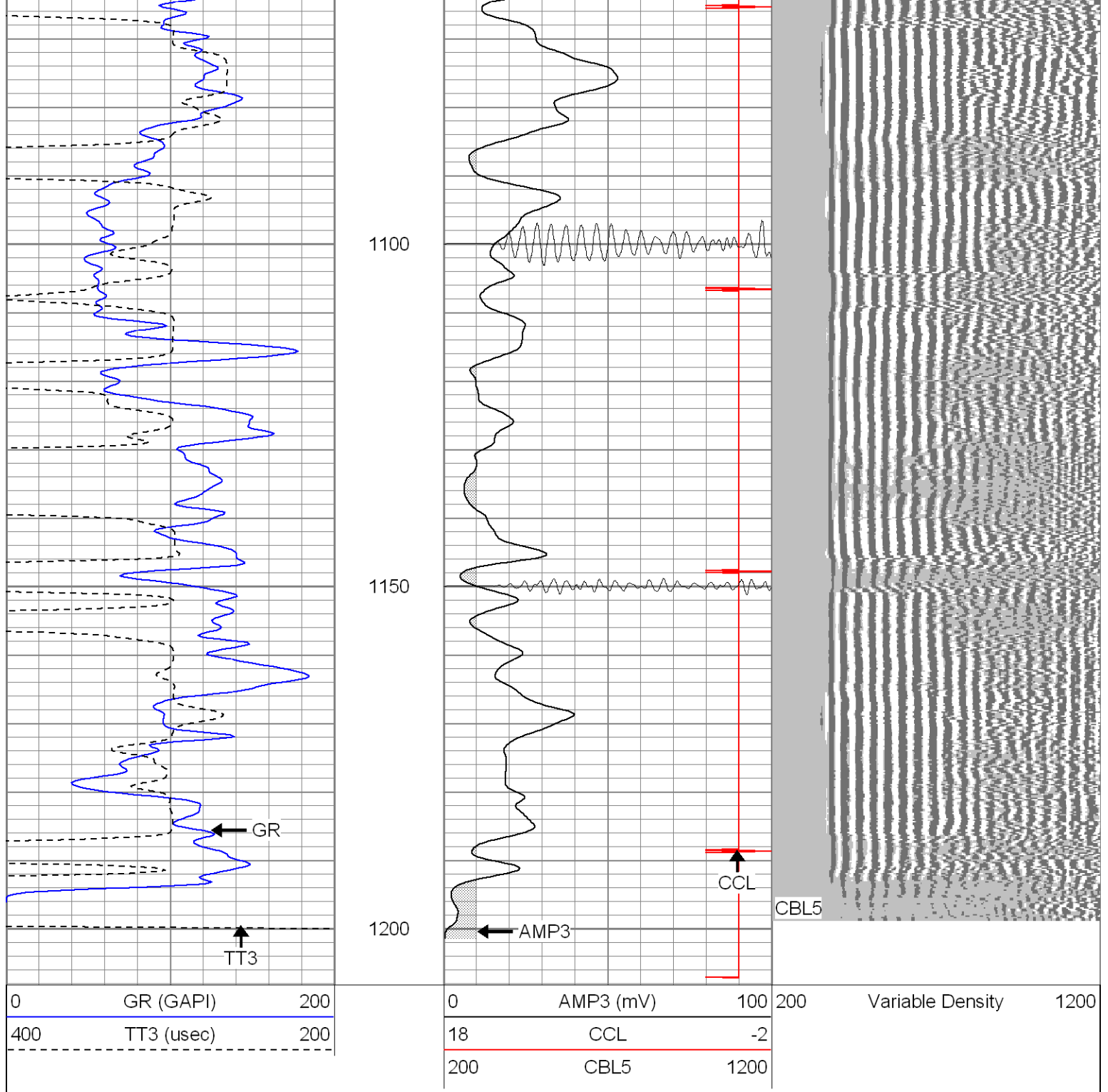
700

750

800



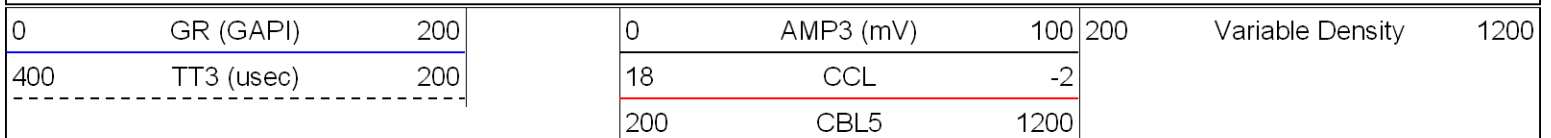


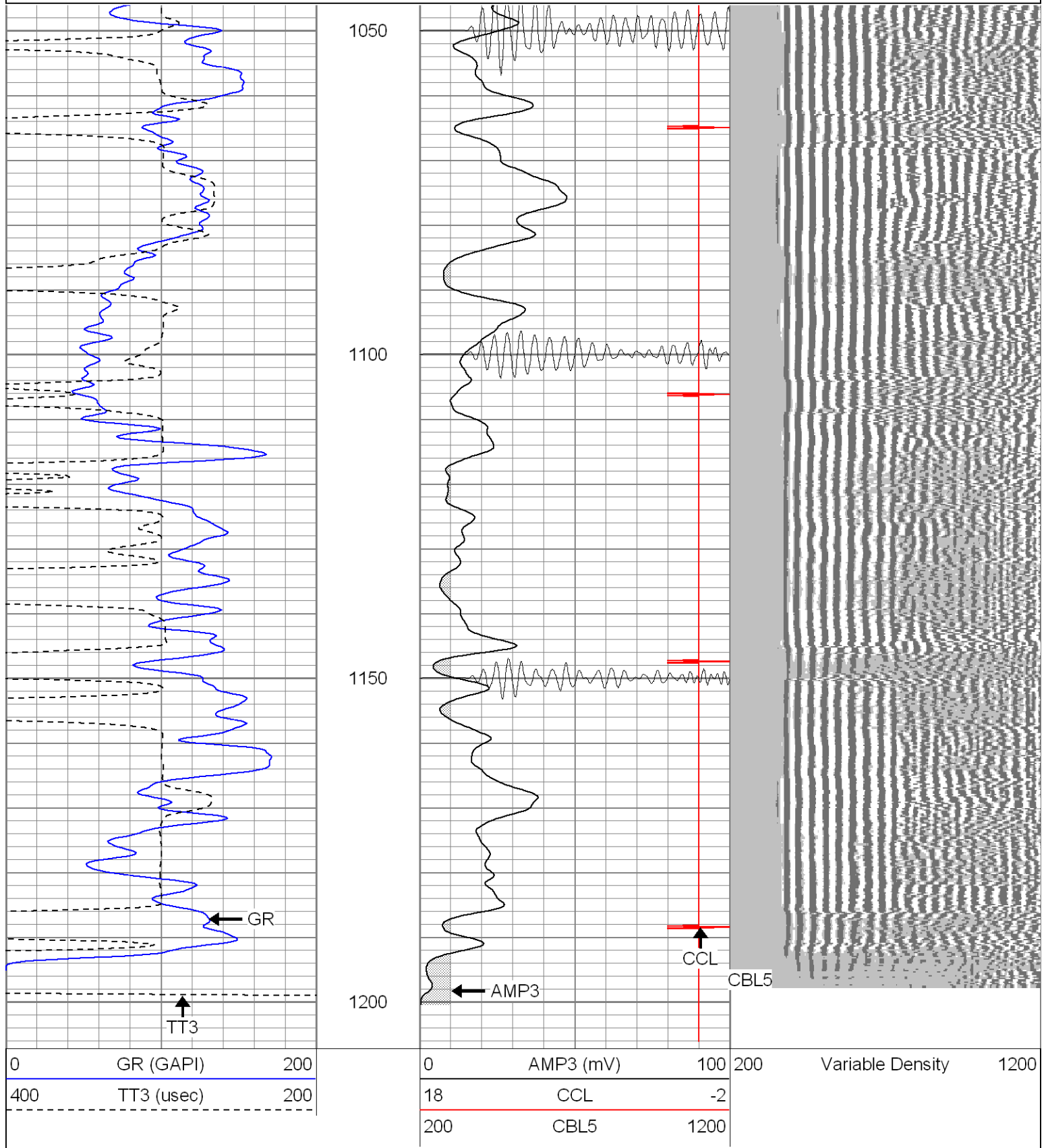


Patterson

Repeat Section

Database File: c:\warrior\data\el paso\vprc125b51006.db
 Dataset Pathname: pass1
 Presentation Format: cblrt
 Dataset Creation: Wed May 10 08:58:57 2006 by Log Warrior 7.0 STD Cas
 Charted by: Depth in Feet scaled 1:240





Cement Bond Log Calibration Report

Serial Number: Titan5
Tool Model: 2
Performed: Wed May 10 09:56:52 2006

Depth: 295.435 ft
Casing Diameter: 5.5 in

3' Spacing

5' Spacing

Signal Zero:	0	0	mV
Calibrated Amplitude:	85	85	mV
Reading at Signal Zero:	-0.01	0.00878906	V
Reading in Free Pipe:	1.5	1.4	V
Gain:	56.2914	61.0979	
Offset:	0.562914	-0.536993	

Gamma Ray Calibration Report

Serial Number:	Titan5		
Tool Model:	T2		
Performed:	Wed May 10 09:56:55 2006		
Calibrator Value:	1.0	GAPI	
Background Reading:	0.0	cps	
Calibrator Reading:	1.0	cps	
Sensitivity:	1.2500	GAPI/cps	