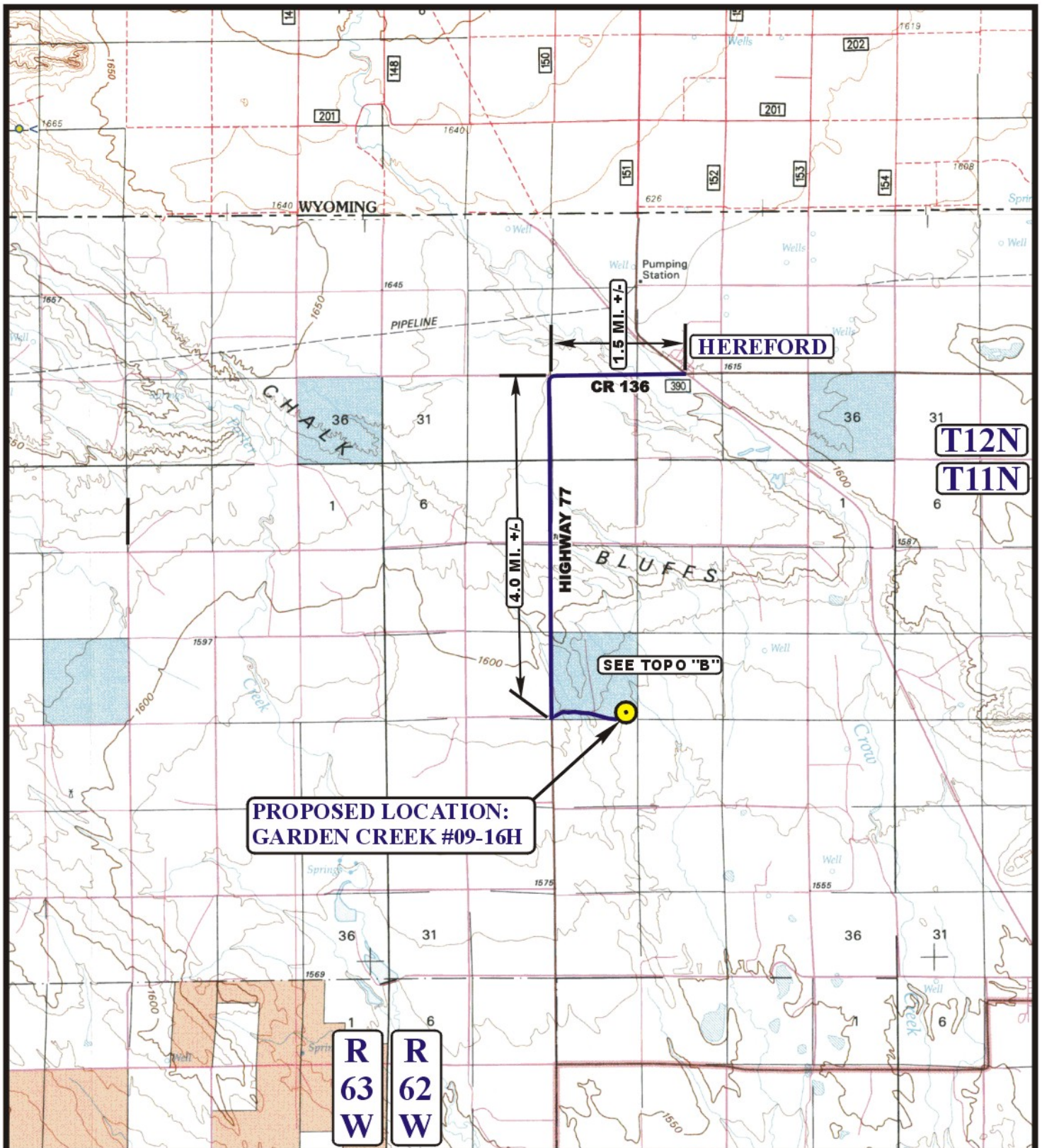


EOG RESOURCES, INC.
GARDEN CREEK #09-16H
SECTION 16, T11N, R62W, 6th P.M.

PROCEED IN A WESTERLY DIRECTION FROM HEREFORD, COLORADO ON COUNTY ROAD 136 APPROXIMATELY 1.5 MILES TO THE JUNCTION OF COUNTY ROAD 136 AND COUNTY ROAD 77 TO THE SOUTH; TURN LEFT AND PROCEED IN A SOUTHERLY DIRECTION APPROXIMATELY 4.0 MILES TO THE BEGINNING OF THE PROPOSED ACCESS ROAD TO THE EAST; FOLLOW ROAD FLAGS IN AN EASTERLY DIRECTION APPROXIMATELY 0.9 MILES TO THE PROPOSED LOCATION.

TOTAL DISTANCE FROM HEREFORD, COLORADO TO THE PROPOSED LOCATION IS APPROXIMATELY 6.4 MILES.



LEGEND:

 PROPOSED LOCATION



EOG RESOURCES, INC.

GARDEN CREEK #09-16H
SECTION 16, T11N, R62W, 6th P.M.
501' FSL 600' FEL



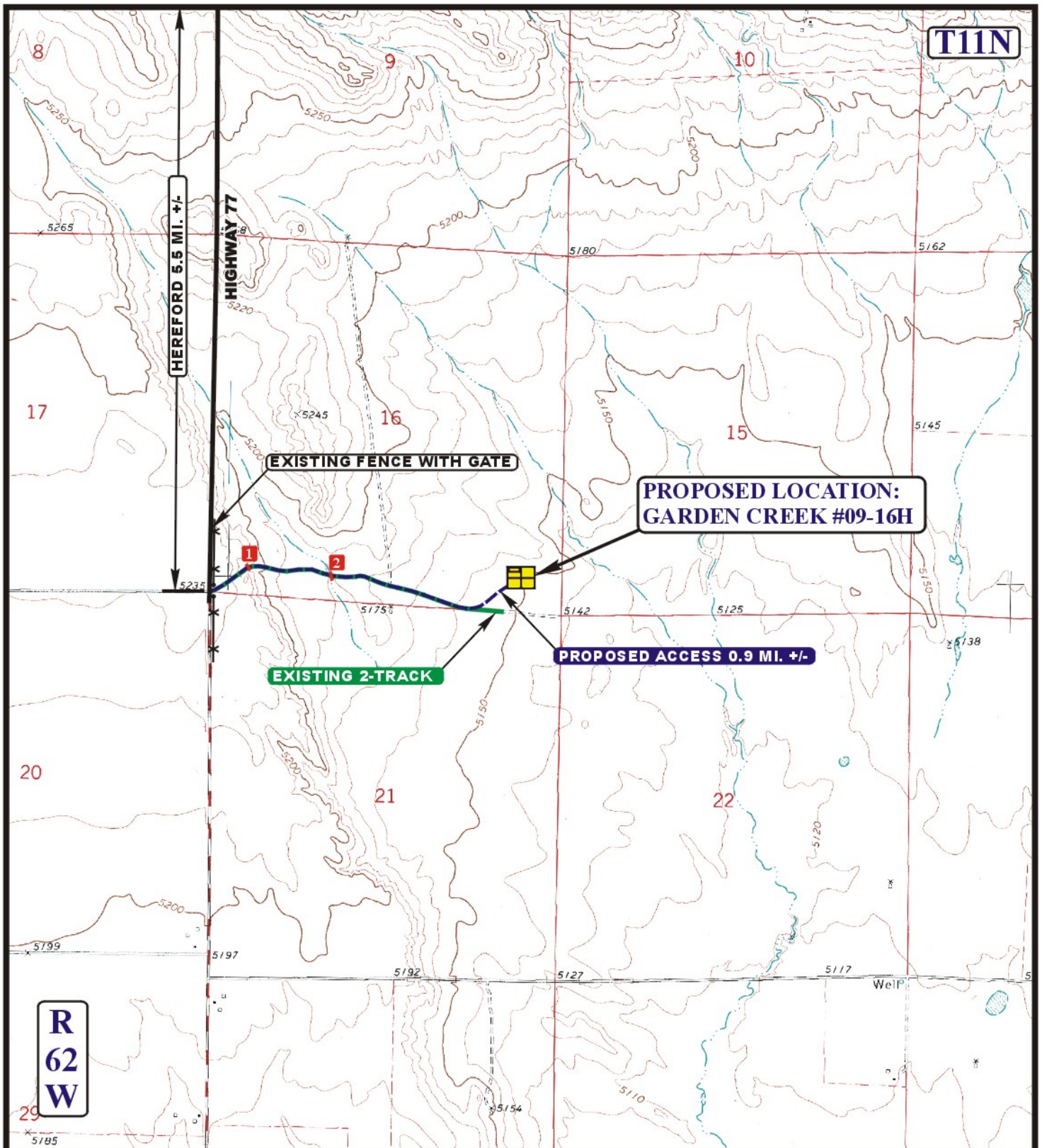
Uintah Engineering & Land Surveying
 85 South 200 East Vernal, Utah 84078
 (435) 789-1017 * FAX (435) 789-1813

ACCESS ROAD
MAP

01 05 10
 MONTH DAY YEAR

SCALE: 1:100,000 DRAWN BY: J.H. REVISED: 00-00-00





LEGEND:

- EXISTING ROAD
- EXISTING 2-TRACK
- PROPOSED ACCESS ROAD
- EXISTING FENCE
- 1 INSTALL 18" CMP
- 2 INSTALL 24" CMP



Uintah Engineering & Land Surveying
 85 South 200 East Vernal, Utah 84078
 (435) 789-1017 * FAX (435) 789-1813



EOG RESOURCES, INC.

GARDEN CREEK #09-16H
 SECTION 16, T11N, R62W, 6th P.M.
 501' FSL 600' FEL

ACCESS ROAD
 MAP

01 05 10
 MONTH DAY YEAR

SCALE: 1" = 2000' DRAWN BY: J.H. REVISED: 00-00-00

B
 TOPO