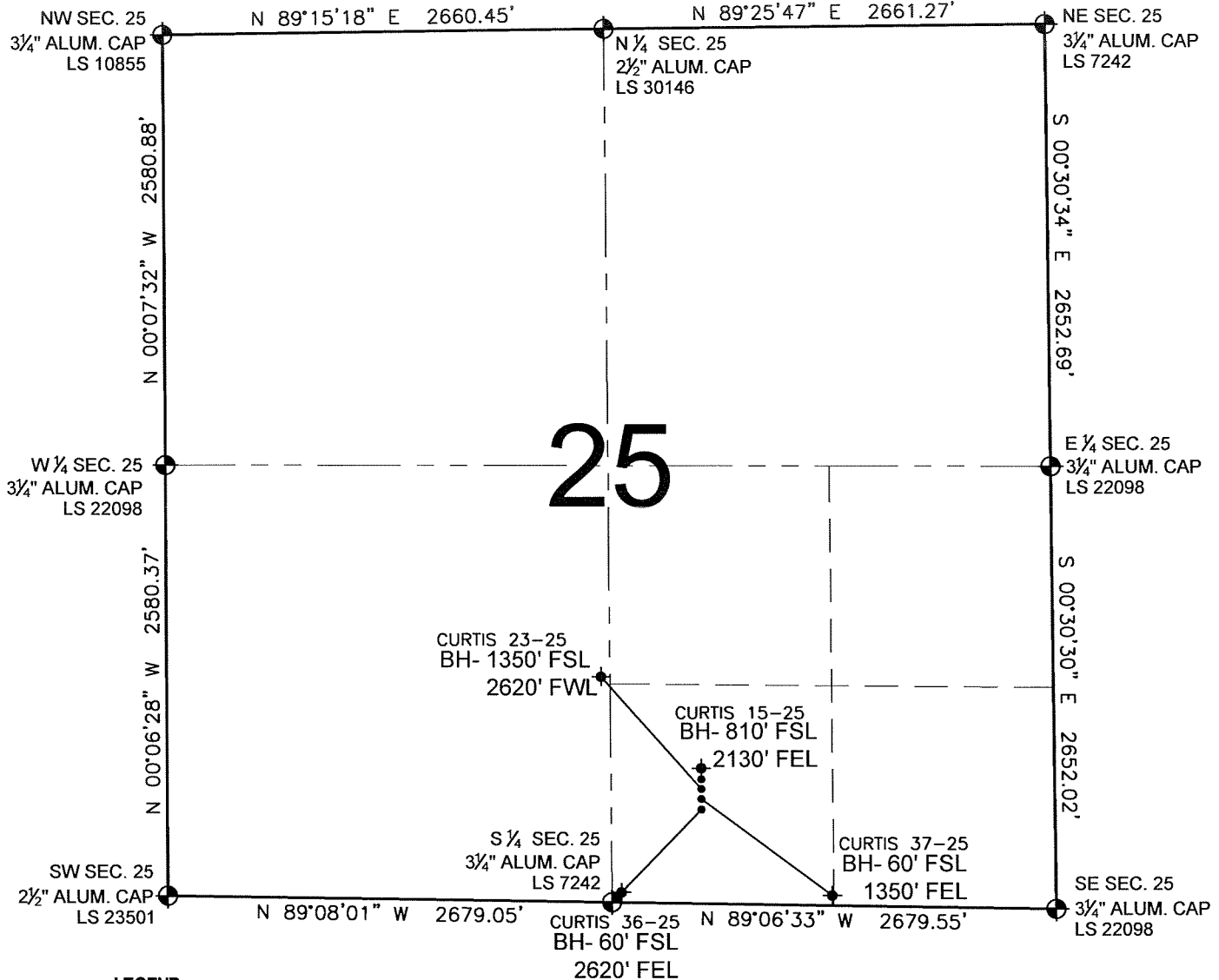


# PAD DRAWING - CURTIS 4 PAD

SECTION 25, TOWNSHIP 5 NORTH, RANGE 66 WEST, 6TH P.M.



## LEGEND

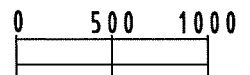
- ◉ = EXISTING MONUMENT
- ◐ = PROPOSED WELL
- ◆ = BOTTOM HOLE
- ◆ = EXISTING WELL
- BH= BOTTOM HOLE

## NOTES:

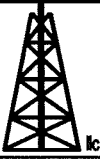
- THIS SURVEY WAS DONE BY GPS METHODS AND CONFORMS TO THE MINIMUM STANDARDS SET BY THE C.O.G.C.C., RULE NO. 215
- ELEVATIONS SHOWN AT THE WELL HEAD, AS WELL AS HORIZONTAL CONTROL, ARE BASED ON GPS-RTK VALUES DERIVED FROM DOING 2-HOUR STATIC GPS SESSIONS AND REDUCTIONS USING O.P.U.S. SOLUTIONS.  
VERTICAL = NAVD88; HORIZONTAL = NAD83/92
- THE BEARINGS SHOWN HEREON ARE BASED ON GPS OBSERVATIONS BETWEEN THE MONUMENTS SHOWN HEREON AS FOUND ON THE FIELD DATE BELOW.
- DISTANCES SHOWN ARE AT GROUND LEVEL, AS MEASURED IN THE FIELD, WITH TIES TO WELLS MEASURED AT A PERPENDICULAR TO SECTION LINES.

## NOTES:

- CURTIS 36-25 TO BE AT 696' FSL, 2130' FEL.
- BOTTOM HOLE AT 60' FSL & 2620' FEL.
- CURTIS 37-25 TO BE AT 712' FSL, 2130' FEL.
- BOTTOM HOLE AT 60' FSL & 1350' FEL.
- CURTIS 23-25 TO BE AT 728' FSL, 2130' FEL.
- BOTTOM HOLE AT 1350' FSL & 2620' FWL.
- CURTIS 15-25 TO BE AT 744' FSL, 2129' FEL.
- BOTTOM HOLE AT 810' FSL & 2130' FEL.



SCALE: 1"=1000'

REVISIONS		<b>PREPARED BY:</b>   <b>PFS</b> Petroleum Field Services, LLC 1801 W. 13th Ave. Denver, CO 80204
INITIAL	DATE	

KERR-MCGEE OIL & GAS ONSHORE LP

FIELD DATE: 11-09-09	PAD NAME: <b>CURTIS 4 PAD</b>
DRAWING DATE: 11-11-09	SURFACE LOCATION:
BY: SMF	WELD COUNTY, COLORADO SW 1/4 SE 1/4, SEC. 25, T5N, R66W