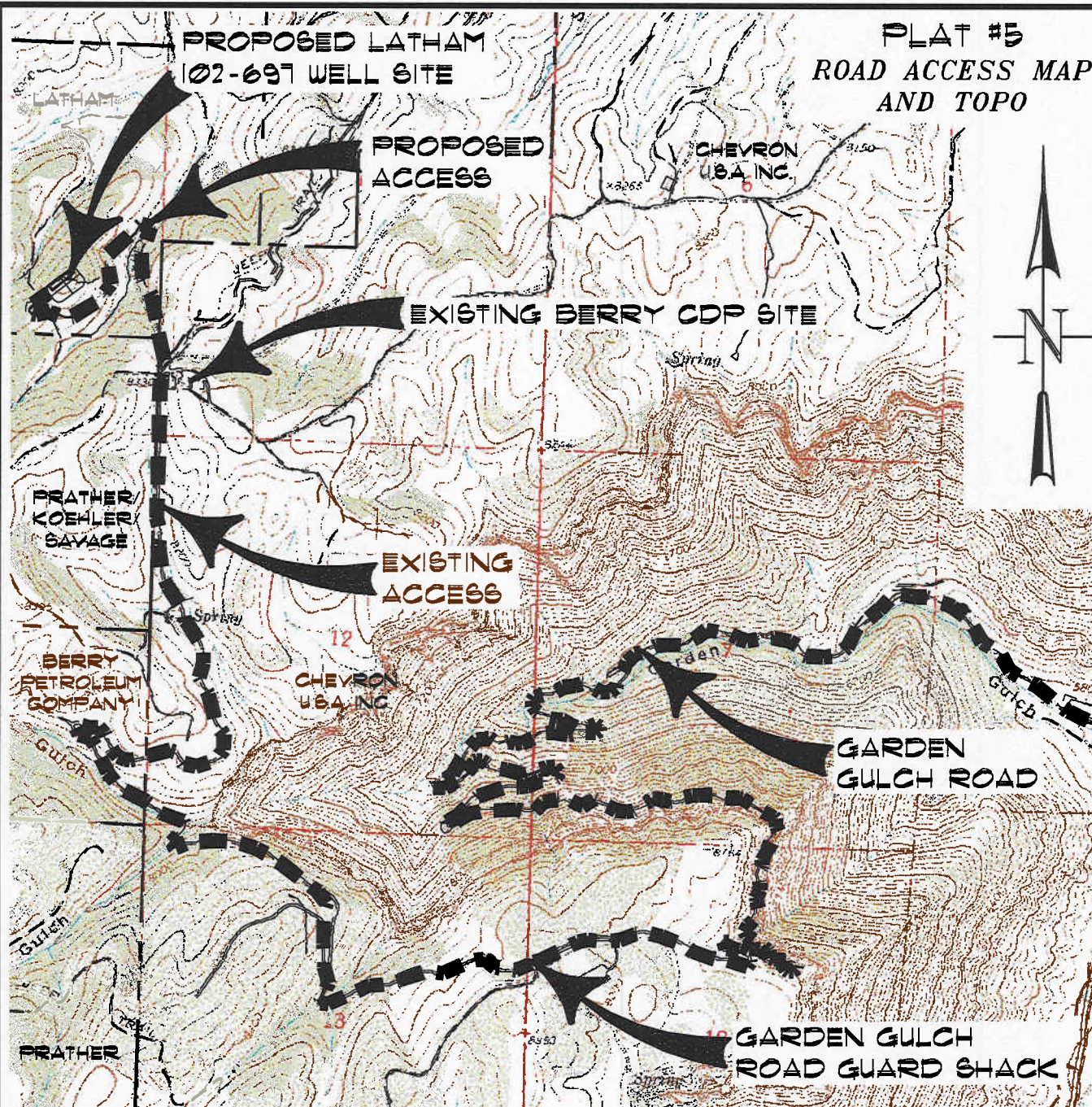


PROPOSED LATHAM  
102-697 WELL SITE



FROM THE INTERSECTION OF THE GARDEN GULCH ROAD AND COUNTY ROAD 215, PROCEED IN A GENERAL WESTERLY DIRECTION ALONG THE GARDEN GULCH ROAD APPROXIMATELY 6.3 MILES TO THE GARDEN GULCH ROAD GUARD SHACK, PROCEED RIGHT PAST THE GUARD SHACK ALONG A DIRT/GRAVEL ROAD IN A GENERAL WESTERLY AND THEN NORTHERLY DIRECTION APPROXIMATELY 3.2 MILES TO AN IMPROVED ROAD ON THE LEFT AT THE EXISTING BERRY CDP SITE, PROCEED LEFT IN A GENERAL NORTHWESTERLY DIRECTION APPROXIMATELY 0.4 MILES TO AN INTERSECTION WITH A PROPOSED FLAGGED ACCESS CENTERLINE ON THE LEFT, PROCEED LEFT IN A GENERAL SOUTHWESTERLY AND THEN NORTHERLY DIRECTION APPROXIMATELY 0.5 MILES TO THE PROPOSED LATHAM #02-697 WELL PAD, BEING THE LOCATION.



CONSTRUCTION SURVEYS, INC.  
0012 SUNRISE BLVD.  
SILT, CO 81652  
(970)876-5753

LATHAM 102-697  
BERRY PETROLEUM COMPANY

SCALE: 1" = 3000'

SHEET 5 OF 9