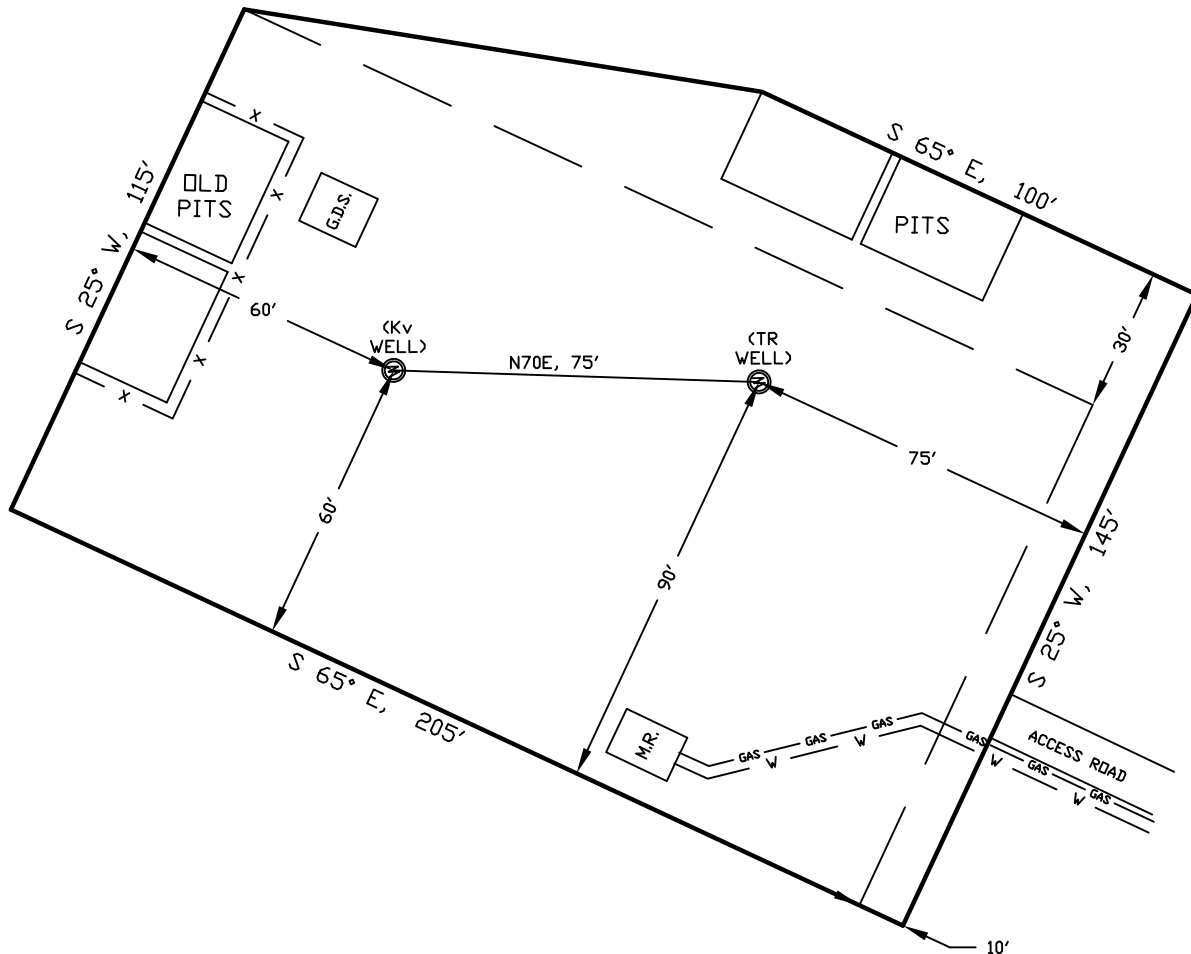


WELLSITE/PRODUCTION EQUIPMENT LAYOUT

OPERATOR: Pioneer Natural Resources

WELL NAME: Lynn 32-4 TR (Revised)

SWNE of SECTION 4 TOWNSHIP 33 S, RANGE 67 W OF THE 6TH P.M., IN LAS ANIMAS COUNTY



NOTE:

MUD AND BLOW PITS WILL BE CONVERTED TO UNLINED EVAPORATION PITS FOR PRODUCTION.

WELLHEADS ARE TYPICALLY PCP DRIVE HEADS

GRAPHIC SCALE



(IN FEET)

1 inch = 40 ft.

LEGEND:

- ⊙ = WELLHEAD
- ⊙ = EXISTING WELLPAD
- X = FENCE (4 STRAND)
- GAS = 4" GAS GATHERING LINE
- W = 2" WATER LINE
- M.R. = COMBO METER RUN AND WATER/GAS SEPERATOR
- G.D.S. = GAS DRIVE SYSTEM

October 05, 2009

Date Platted

SHIELDS SURVEY L^{td} C^o.
 Raton, New Mexico 87740
 (575)445-1232