

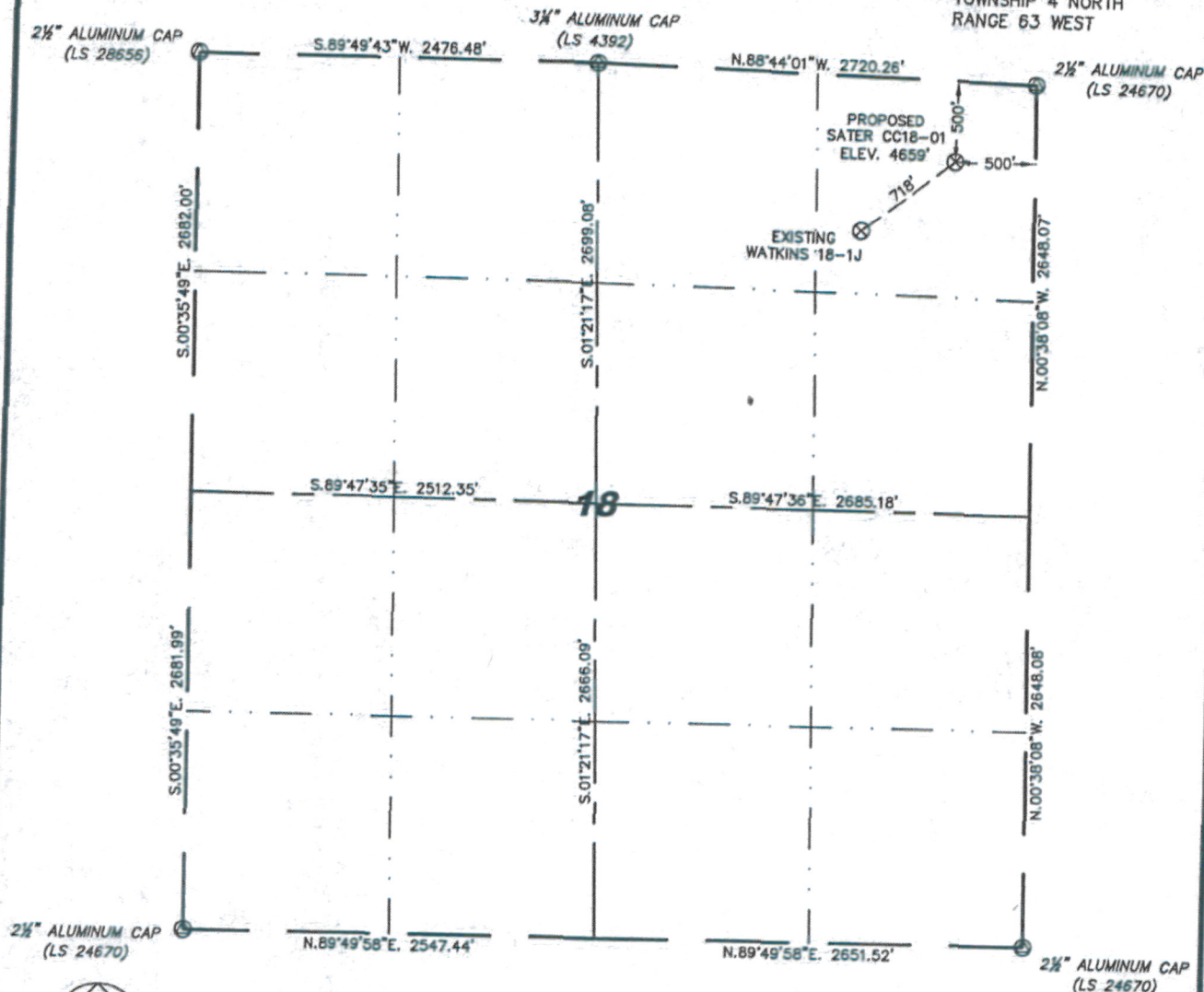
Stell Surveying Services, LLC

1102 West 19th Street P.O. BOX 2073

Cheyenne, Wyoming 82009

WELL LOCATION CERTIFICATE
THIS MAP DOES NOT REPRESENT A BOUNDARY SURVEY

SECTION 18
TOWNSHIP 4 NORTH
RANGE 63 WEST



IN ACCORDANCE WITH A REQUEST FROM BRENT SIMANSKI - NOBLE ENERGY INC. STELL SURVEYING SERVICES, LLC HAS DETERMINED THE LOCATION OF THE SATER CC18-01 WELL TO BE 500' FNL, 500' FEL, AS MEASURED AT NINETY (90) DEGREES FROM THE SECTION LINES, SECTION 18, TOWNSHIP 4 NORTH, RANGE 63 WEST, 6TH PRINCIPLE MERIDIAN, WELD COUNTY, COLORADO.

I HEREBY CERTIFY THAT THIS WELL LOCATION CERTIFICATE WAS PREPARED BY ME, OR UNDER MY DIRECT SUPERVISION, THAT THE FIELD WORK WAS COMPLETED ON 06/25/2009, FOR AND ON BEHALF OF NOBLE ENERGY INC., THAT IT IS NOT A LAND SURVEY PLAT OR AN IMPROVEMENT SURVEY PLAT, AND THAT IT IS NOT TO BE RELIED UPON FOR ESTABLISHMENT OF FENCE, BUILDING, OR OTHER FUTURE IMPROVEMENT LINES.

NOTES:

- 1) BASIS OF BEARINGS FOR THIS MAP ARE BASED UPON GPS OBSERVATIONS MADE ON 10/03/2007 BETWEEN MONUMENTS LOCATED AT THE SOUTHEAST SECTION CORNER AND THE NORTHEAST SECTION CORNER OF SAID SECTION AND WITH ALL BEARINGS SHOWN HEREON RELATIVE THERETO.
- 2) ELEVATIONS ARE BASED UPON NGS OPUS SOLUTION NAVD 88 DATUM.
- 3) THE NEAREST EXISTING WELL IS: WATKINS 18-1J, 718' SOUTHWEST.
- 4) SEE VISIBLE IMPROVEMENTS EXHIBIT FOR ALL IMPROVEMENTS WITHIN 400'.
- 5) THE LOCATION FALLS IN PASTURE LAND.

LATITUDE & LONGITUDE (NAD 83 SURFACE HOLE):
LATITUDE: N 40.31800°
LONGITUDE: W 104.47283°
PDOP: 2.3
QUARTER-QUARTER: NE/4NE/4
NEAREST PROPERTY LINE: 500' TO THE NORTH

NOTICE: According to Colorado law you MUST commence any legal action based upon any defect in this W.L.C. within three years after you first discover such defect. In no event may any action based upon any defect in this W.L.C. be commenced more than ten years from this said date of the certification shown hereon.

LEGEND

- (A) FOUND SURVEY MONUMENT PER MONUMENT RECORD - EXCEPTIONS NOTED.
- (C) CALCULATED DIMENSION

David C. Holmes
Professional Land Surveyor Registration No. 32828
State of Colorado

JOB # 09086

Completed 06/30/2009

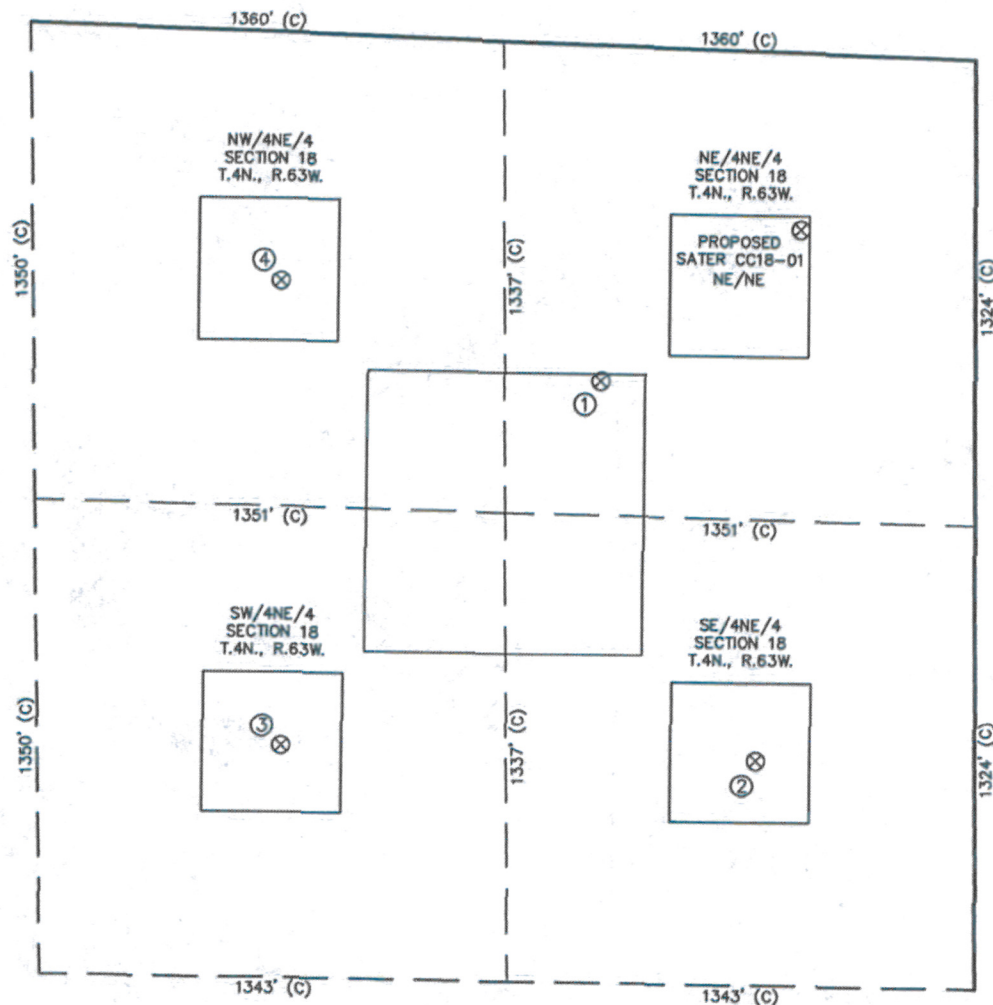


Permit Zones: Cod/Nio
 Surface Csg: 500 ft & 210 sks of cmt
 TVD/MD: 6,900 ft & 615 sks of cmt

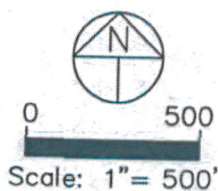
CN 9/2/2009

SITE SKETCH - SATER CC18-01

SECTION 18
 TOWNSHIP 4 NORTH
 RANGE 63 WEST



①	②	③	④
WATKINS 18-1J NE/NE SEC. 18 950' FNL 1074' FEL EL 4642' N 40.31682 W 104.47489 PDOP 2.3	WATKINS 18-6 SE/NE SEC. 18 2017' FNL 628' FEL EL 4653' N 40.31384 W 104.47329 PDOP 2.2	WATKINS CC18-7 SW/NE SEC. 18 2021' FNL 1993' FEL EL 4637' N 40.31396 W 104.47818 PDOP 2.1	WATKINS CC18-2 NW/NE SEC. 18 704' FNL 1998' FEL EL 4648' N 40.31758 W 104.47820 PDOP 2.1



NOTES:
 1) THIS SKETCH DOES NOT REPRESENT A BOUNDARY SURVEY.
 2) THE DATUM FOR THE LATITUDES AND LONGITUDES ON THIS SKETCH IS NAD83.