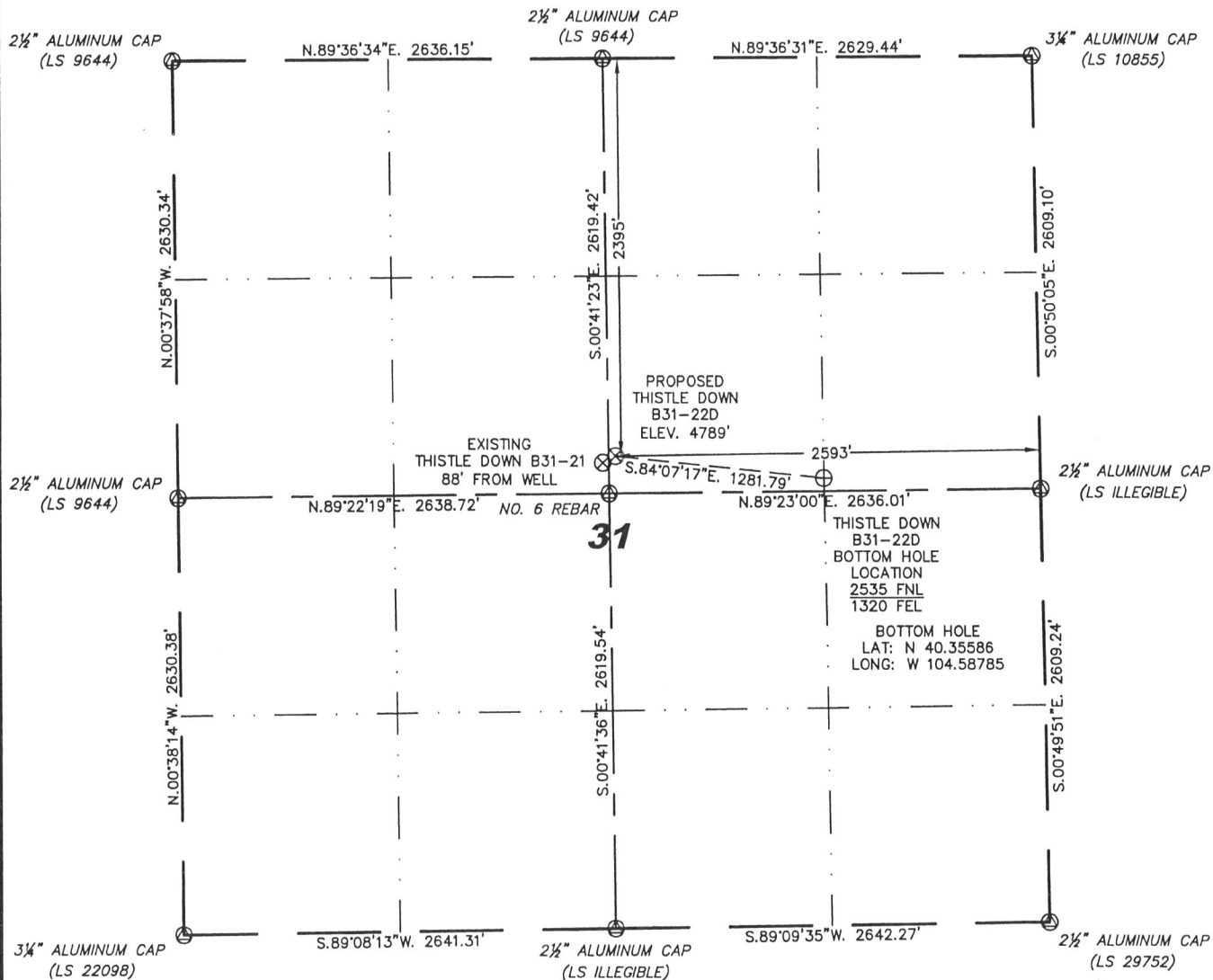


Stell Surveying Services, LLC

1102 West 19th Street P.O. BOX 2073  
WELL LOCATION CERTIFICATE  
THIS MAP DOES NOT REPRESENT A BOUNDARY SURVEY

Cheyenne, Wyoming 82009

SECTION 31  
TOWNSHIP 5 NORTH  
RANGE 64 WEST



0 1000

Scale: 1" = 1000'

IN ACCORDANCE WITH A REQUEST FROM JACK FINCHAM - NOBLE ENERGY INC. STEIL SURVEYING SERVICES, LLC HAS DETERMINED THE LOCATION OF THE THISTLE DOWN B31-22D WELL TO BE 2395' FNL, 2593' FEL, AS MEASURED AT NINETY (90) DEGREES FROM THE SECTION LINES, SECTION 31, TOWNSHIP 5 NORTH, RANGE 64 WEST, 6TH PRINCIPLE MERIDIAN, WELD COUNTY, COLORADO.

I HEREBY CERTIFY THAT THIS WELL LOCATION CERTIFICATE WAS PREPARED BY ME, OR UNDER MY DIRECT SUPERVISION, THAT THE FIELD WORK WAS COMPLETED ON 05/14/2009, FOR AND ON BEHALF OF NOBLE ENERGY INC. THAT IT IS NOT A LAND SURVEY PLAT OR AN IMPROVEMENT SURVEY PLAT, AND THAT IT IS NOT TO BE RELIED UPON FOR ESTABLISHMENT OF FENCE, BUILDING, OR OTHER FUTURE IMPROVEMENT LINES.

NOTES:

- 1) BASIS OF BEARINGS FOR THIS MAP ARE BASED UPON GPS OBSERVATIONS MADE ON 12/26/2007 BETWEEN MONUMENTS LOCATED AT THE SOUTHEAST SECTION CORNER AND THE NORTHEAST SECTION CORNER OF SAID SECTION AND WITH ALL BEARINGS SHOWN HEREON RELATIVE THERETO.
- 2) ELEVATIONS ARE BASED UPON NGS OPUS SOLUTION NAVD 88 DATUM.
- 3) THE NEAREST EXISTING WELL IS: THISTLE DOWN B31-21, 88' SOUTHWEST.
- 4) SEE VISIBLE IMPROVEMENTS EXHIBIT FOR ALL IMPROVEMENTS WITHIN 400'.
- 5) THE LOCATION FALLS IN PASTURE LAND.

LATITUDE & LONGITUDE (NAD 83 SURFACE HOLE):  
LATITUDE: N 40.35626°  
LONGITUDE: W 104.59242°  
PDOP: 1.9  
QUARTER-QUARTER: SW/4NE/4  
NEAREST PROPERTY LINE: 42' TO THE WEST

LEGEND

- (A) FOUND SURVEY MONUMENT PER MONUMENT RECORD - EXCEPTIONS NOTED.
- (C) CALCULATED DIMENSION

NOTICE: According to Colorado law you MUST commence any legal action based upon any defect in this W.L.C. within three years after you first discover such defect. In no event may any action based upon any defect in this W.L.C. be commenced more than ten years from this said date of the certification shown hereon.

David C. Holmes  
Professional Land Surveyor Registration No. 32828  
State of Colorado

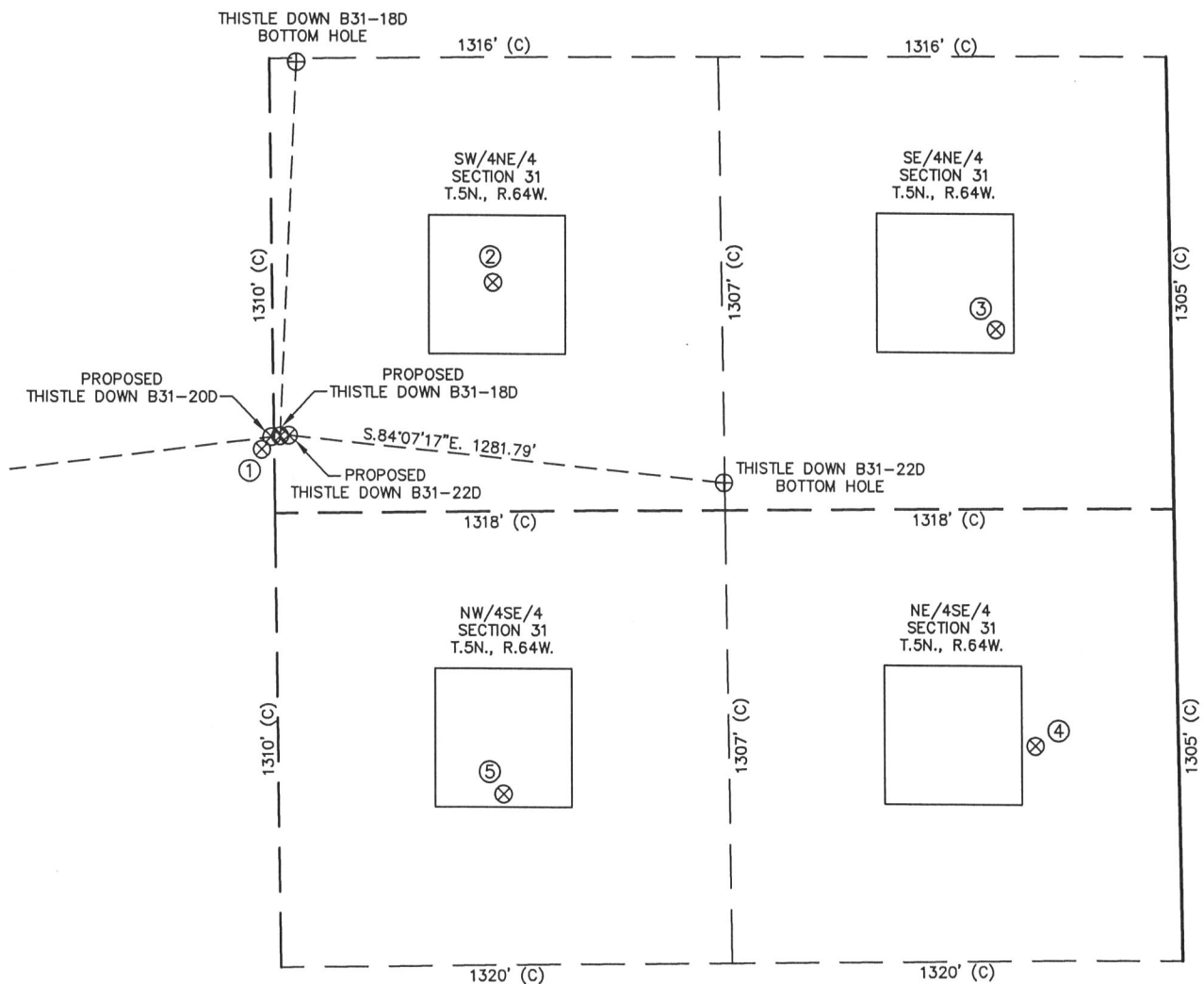
JOB #: 09086

Completed 05/20/2009



# SITE SKETCH – THISTLE DOWN B31-22D

SECTION 31  
TOWNSHIP 5 NORTH  
RANGE 64 WEST



①	②	③	④	⑤	⑥	⑦
THISTLE DOWN B31-21 SE/NW SEC. 31 2435' FNL 2602' FNL EL 4788' N 40.35615 W 104.59271 PDOP 2.2	BOULTER 31-1 SW/NE SEC. 31 1956' FNL 1988' FEL EL 4774' N 40.35745 W 104.59026 PDOP 1.8	SUN SOIL PM B31-8 SE/NE SEC. 31 2093' FNL 513' FEL EL 4780' N 40.35706 W 104.58496 PDOP 2.1	OCOMA B31-9 NE/SE SEC. 31 1924' FSL 420' FEL EL 4788' N 40.35376 W 104.58461 PDOP 2.6	OCOMA B31-10 NW/SE SEC. 31 1800' FSL 1980' FEL EL 4812' N 40.35340 W 104.59021 PDOP 2.8		

## NOTES:

- THIS SKETCH DOES NOT REPRESENT A BOUNDARY SURVEY.
- THE DATUM FOR THE LATITUDES AND LONGITUDES ON THIS SKETCH IS NAD83.

