

DALEY LAND SURVEYING, INC.

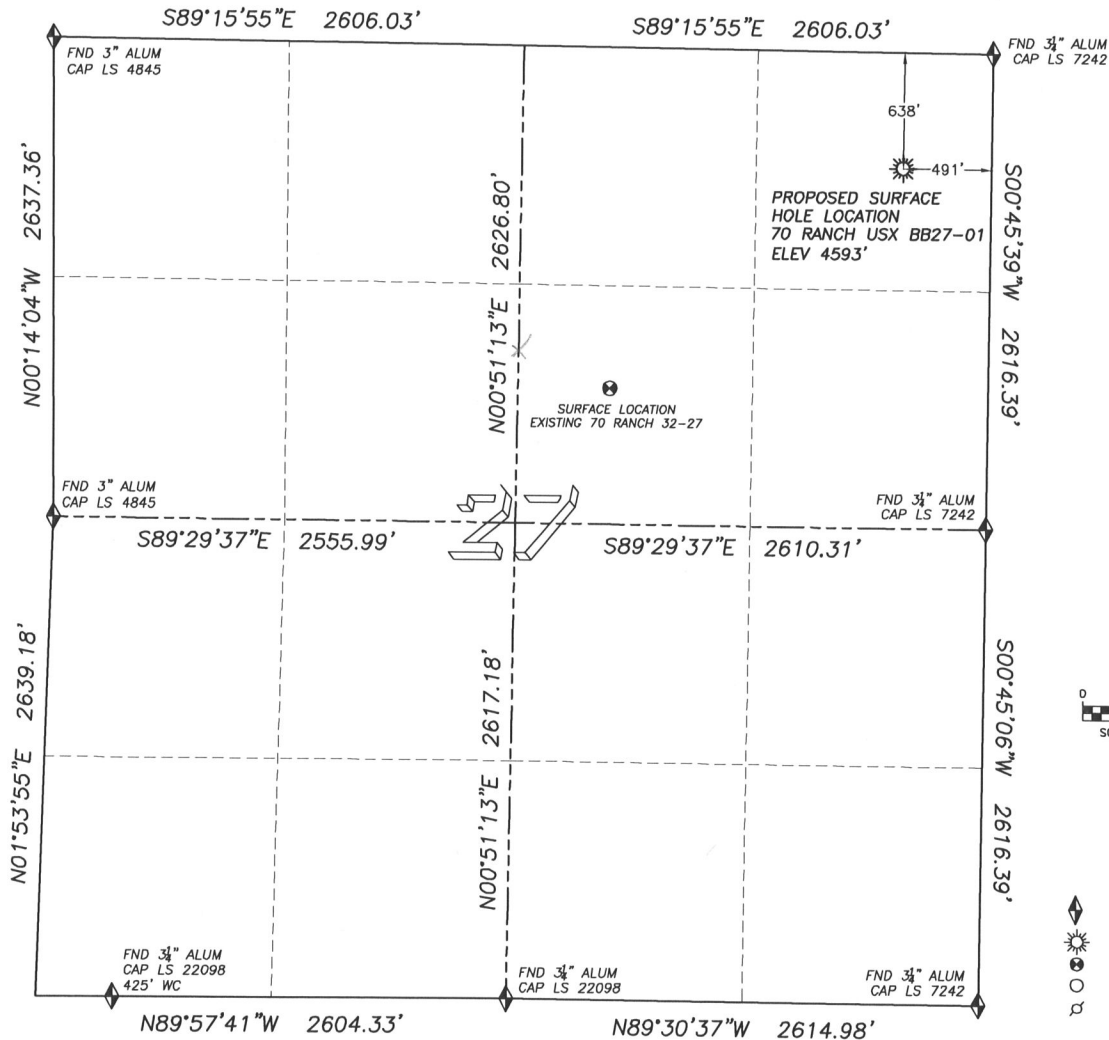
PARKER, CO. 80134

303 953 9841

## WELL LOCATION CERTIFICATE

### 70 RANCH USX BB27-01

SECTION 27, TOWNSHIP 5 NORTH, RANGE 63 WEST OF THE 6TH PRINCIPLE MERIDIAN



0 500 1000  
SCALE: 1" = 1000

#### LEGEND

- FOUND MONUMENT AS DESCRIBED
- PROPOSED WELL
- EXISTING WELL
- BOTTOM HOLE
- ABANDONED WELL

#### NAD 83 LATITUDE AND LONGITUDE

70 RANCH 32-27 SURFACE HOLE:

SURFACE HOLE:

LATITUDE: N40.37578°  
LONGITUDE: W104.41421°  
ELEVATION: 4593'  
PDOP 1.6  
638' FNL, 491' FEL

#### NEAREST EXISTING WELL:

70 RANCH 32-27 SURFACE HOLE:  
LATITUDE: N40.37243°  
LONGITUDE: W104.42004°  
ELEVATION: 4585'  
2030' SOUTHWEST

QUARTER/QUARTER: NE4 NE4

NEAREST APPARENT PROPERTY LINE:  
491'± EAST

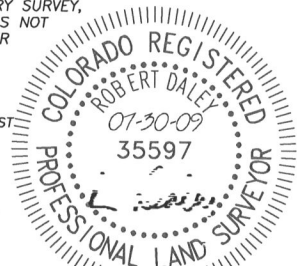
IN ACCORDANCE WITH A REQUEST FROM BRENT SIMANSKI OF NOBLE ENERGY INC., DALEY LAND SURVEYING, INC. HAS DETERMINED THE SURFACE LOCATION OF THE 70 RANCH USX BB27-01 WELL TO BE 638' FNL, 491' FEL, AS MEASURED AT NINETY (90) DEGREES FROM THE SECTION LINES OF SECTION 27, TOWNSHIP 5 NORTH, RANGE 63 WEST OF THE 6TH PRINCIPLE MERIDIAN, WELD COUNTY COLORADO.

I HEREBY CERTIFY THAT THIS WELL LOCATION CERTIFICATE WAS PREPARED BY ME OR UNDER MY DIRECT SUPERVISION, THAT THE WORK WAS COMPLETED ON 07/28/2009 FOR AND ON BEHALF OF NOBLE ENERGY, INC., AND THAT THIS MAP DOES NOT REPRESENT A BOUNDARY SURVEY, IT IS NOT A LAND SURVEY PLAT OR AN IMPROVEMENT SURVEY PLAT AND IT IS NOT TO BE RELIED UPON FOR THE ESTABLISHMENT OF FENCE, BUILDING OR OTHER FUTURE IMPROVEMENT LINES.

#### NOTES:

- 1) BASIS OF BEARINGS FOR THIS MAP ARE ASSUMED AND BASED UPON GPS OBSERVATIONS MADE BETWEEN MONUMENTS LOCATED AT THE NORTHEAST AND EAST QUARTER CORNER OF SECTION 27, T.5N, R.63W., AND ALL BEARINGS SHOWN HERONARE RELATIVE THERETO.
- 2) HORIZONTAL DATUM IS NAD83.
- 3) VERTICAL DATUM IS NAVD83. ELEVATIONS ARE DERIVED FROM GPS-RTK OBSERVATIONS PROCESSED THROUGH OPUS, UTILIZING THE GEIOD03 MODEL.
- 4) SEE VISIBLE IMPROVEMENTS EXHIBIT FOR VISIBLE IMPROVEMENTS WITHIN 400' OF PROPOSED SURFACE HOLE LOCATION.
- 5) SURFACE USE: OPEN RANGE - PASTURE

NOTICE: According to Colorado law you MUST commence any legal action based upon any defect in this W.L.C. within three years after you first discover such defect. In no event may any action based upon any such defect in this W.L.C. be commenced more than ten years from the date of the certification shown heron.



FOR AND ON BEHALF OF  
DALEY LAND SURVEYING INC.,  
Robert Daley, PLS 35597

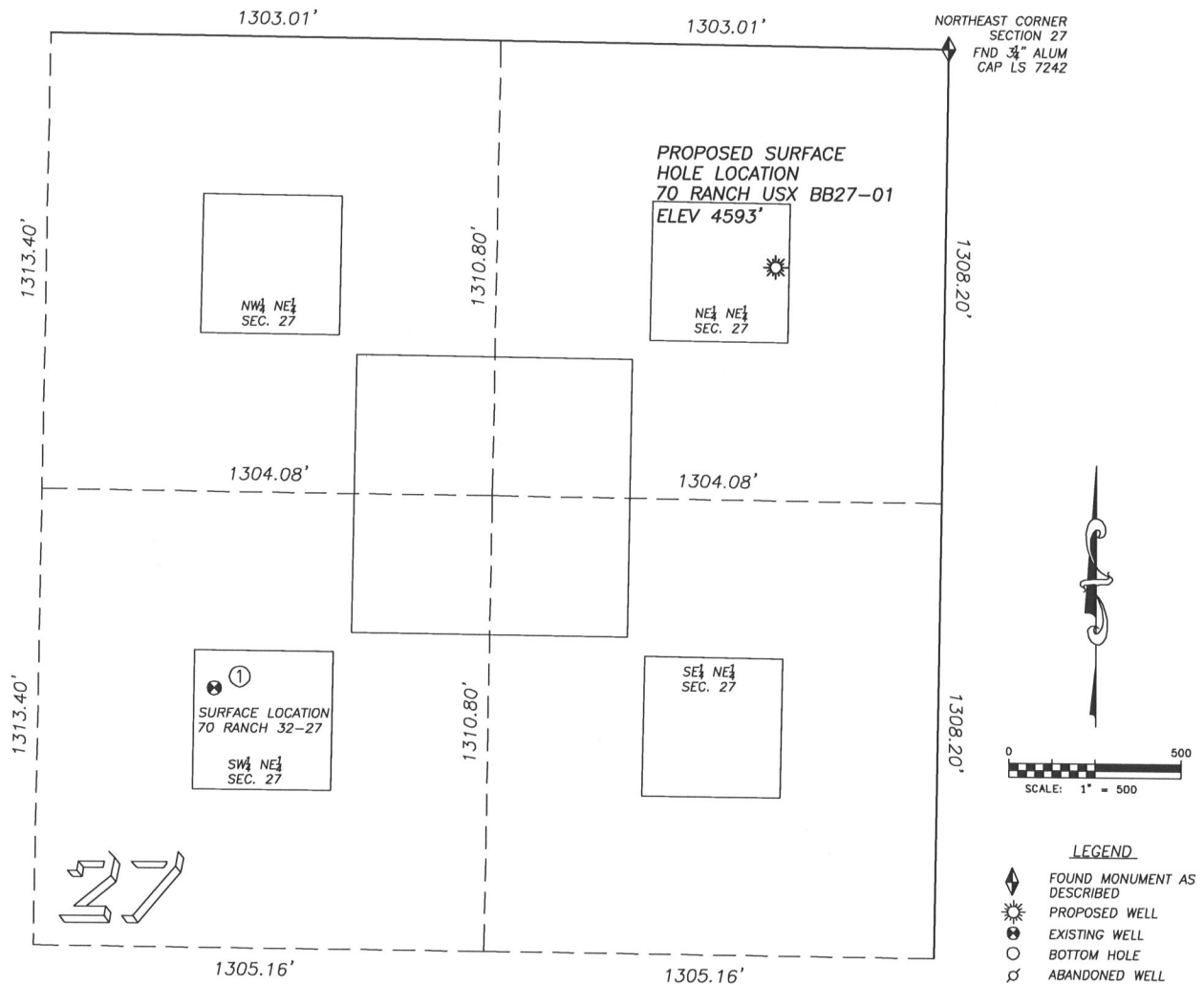
DALEY LAND SURVEYING, INC.

PARKER, CO. 80134

303 953 9841

## SITE SKETCH 70 RANCH USX BB27-01

SECTION 27, TOWNSHIP 5 NORTH, RANGE 63 WEST OF THE 6TH PRINCIPLE MERIDIAN



①

### 70 RANCH 32-27

SW/NE SEC. 27  
1878' FNL, 2098' FEL  
2030' SW OF PROPOSED  
SURFACE HOLE LOCATION  
LAT. N40.37243°  
LONG. W104.42004°  
EL: 4585'  
PDOP 2.5

#### NOTES:

- 1) THIS DOES NOT REPRESENT A BOUNDARY SURVEY
- 2) THE LATITUDES AND LONGITUDES SHOWN ARE REFERENCED TO NAD83
- 3) DATUM FOR ELEVATION IS NAVD88. ELEVATIONS ARE DERIVED FROM GPS-RTK OBSERVATIONS PROCESSED THROUGH OPUS, UTILIZING THE GEOID03 MODEL.