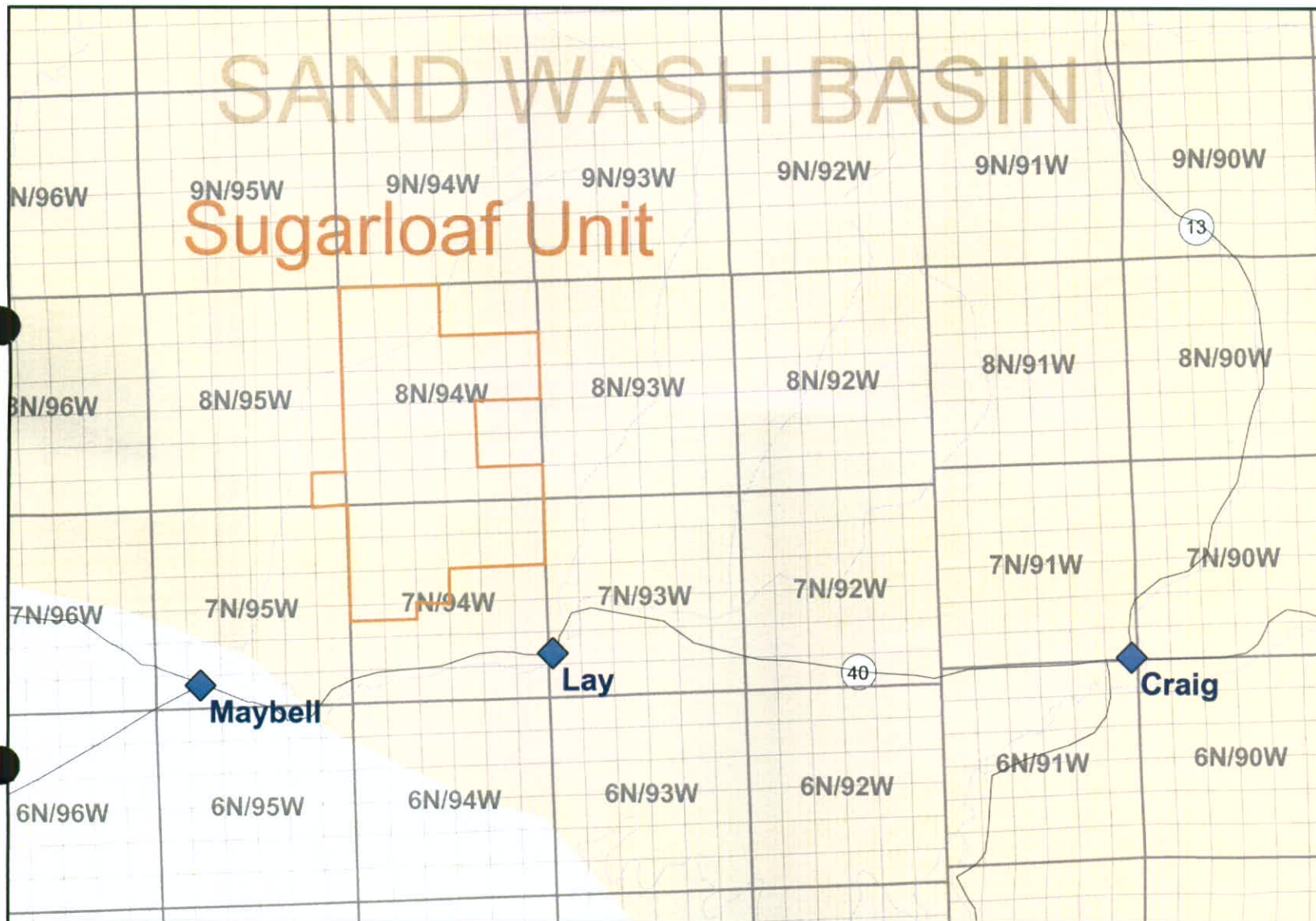




01754653

Locket No. 0606-SP-27

1-221



EXPLANATION

SUGARLOAF UNIT
OUTLINE



CITIES AND TOWNS



ROADS



RIVERS AND STREAMS



SAND WASH BASIN



CDX GAS

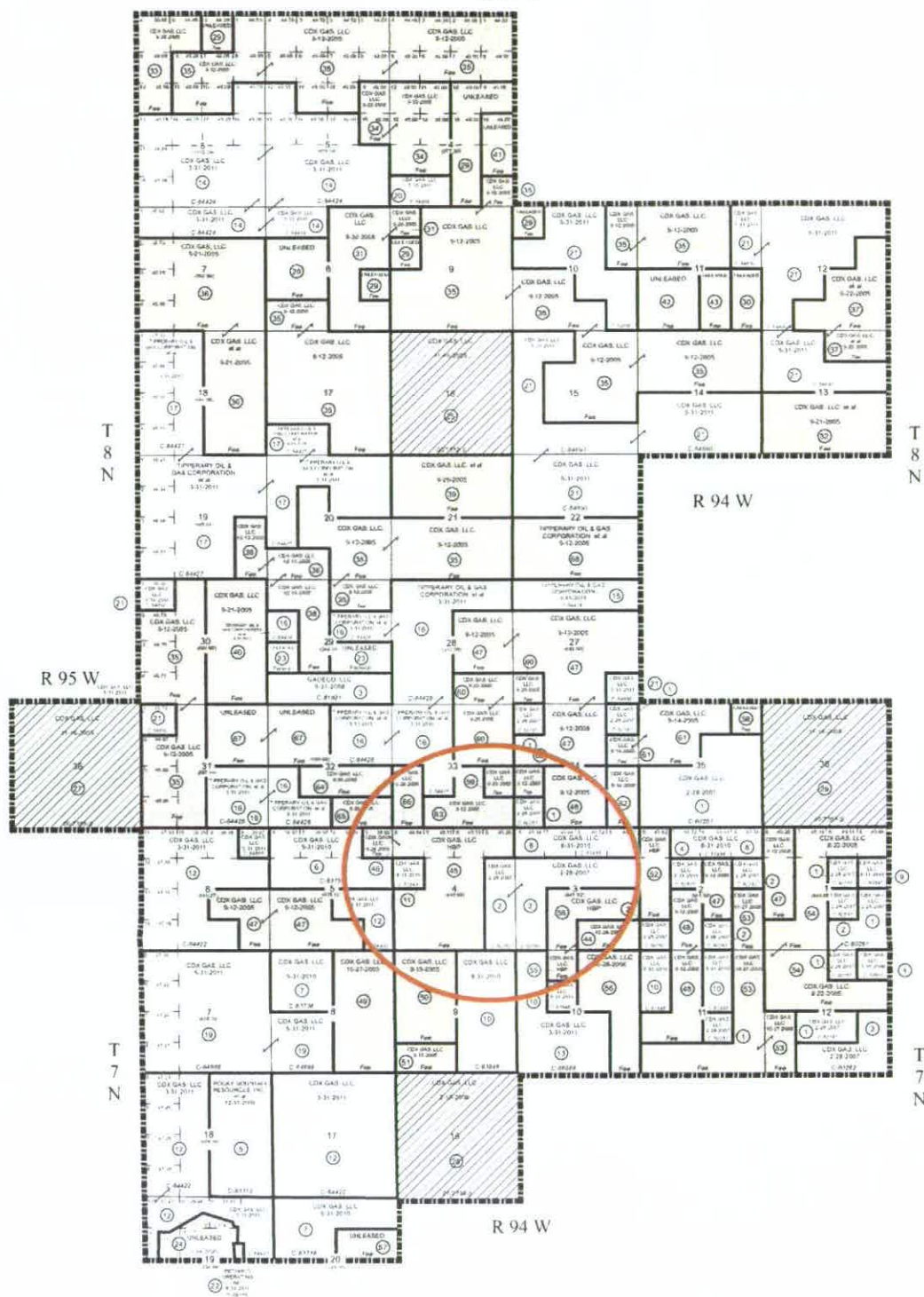
CDX Gas
1801 Broadway, Suite 1060
Denver, CO 80202

EXHIBIT L-1
LOCATION MAP

SUGARLOAF UNIT AREA
MOFFAT COUNTY, COLORADO

5/15/2006
V.Lintz

R 94 W



	ACREAGE	PERCENTAGE
FEDERAL LANDS	13,029.72	42.42%
STATE LANDS	2,560.00	8.33%
PATENTED LANDS	15,130.70	49.25%
TOTALS	30,720.42	100.00%

UNIT OUTLINE (1) TRACT NUMBER
Scale in Miles

NOTE: UNLESS OTHERWISE NOTED HEREIN THE SECTIONS ON THIS PLAT CONTAIN 640 ACRES

EXHIBIT L-2

SUGARLOAF UNIT AREA MOFFAT COUNTY, COLORADO

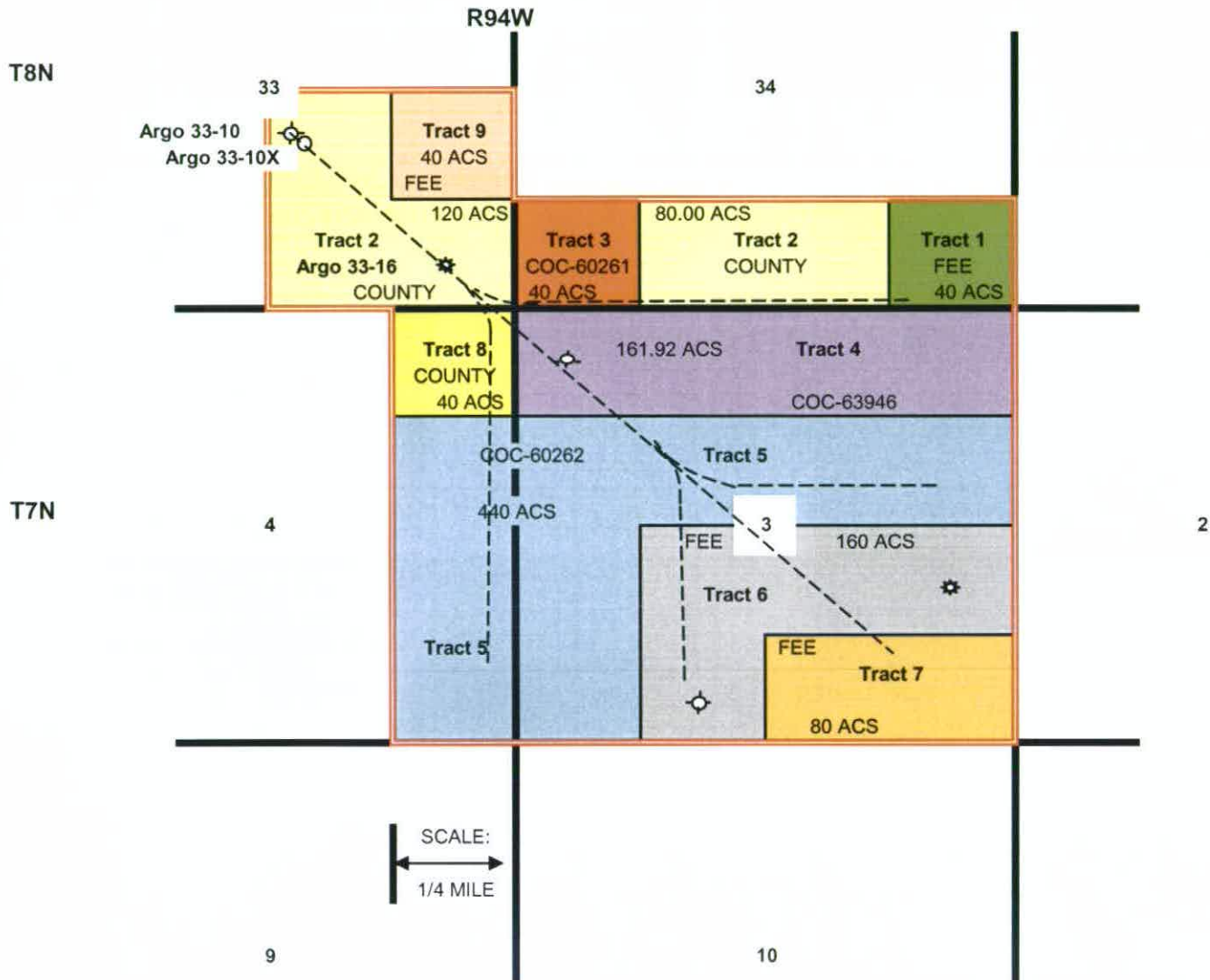
CDX GAS, LLC
DENVER, COLORADO

4-9-2005

Docket No. 0606-SP-27

Exhibit L-5 Original Well Plan - ARGO 33-10X

MINERAL LEASE DESCRIPTION of Unit Acreage Assigned to Argo 33-16 Well: being the SE/4 of Section 33 and S/2S/2 of Section 34 in Township 8 North - Range 94 West, and All of Section 3 and E/2E/2 of Section 4 in Township 7 North - Range 94 West, 6th P.M., limited to the Williams Fork Coal Formation as defined from the depth of 3,536' to 4,708' and its stratigraphic equivalents in the Argo 33-16 Well located in the SE/4SE/4 of Section 33, Twn 8 North - Rge 94 West, 6th P.M.



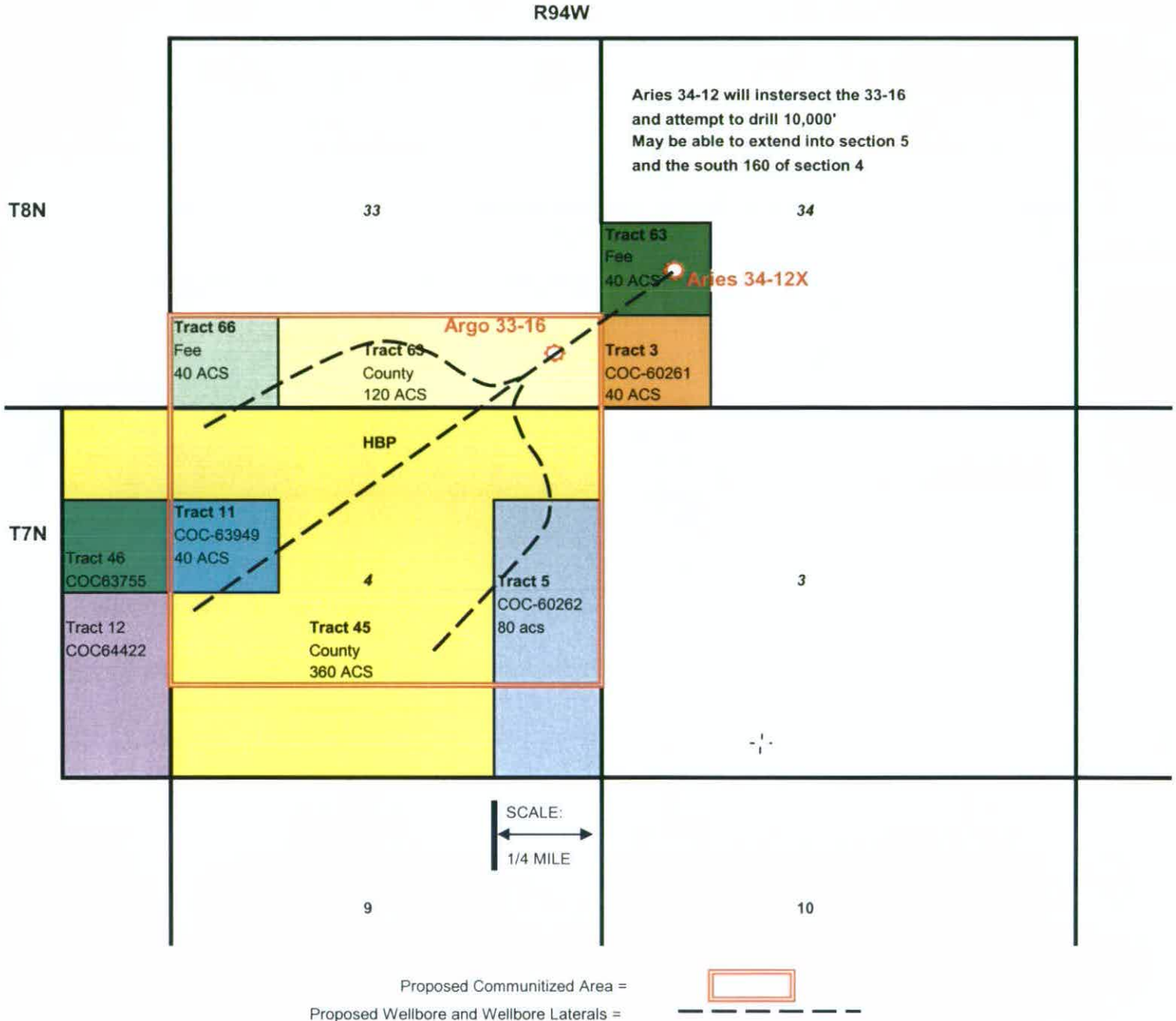
Production Unit Area =
 Proposed Wellbore and Wellbore Laterals =



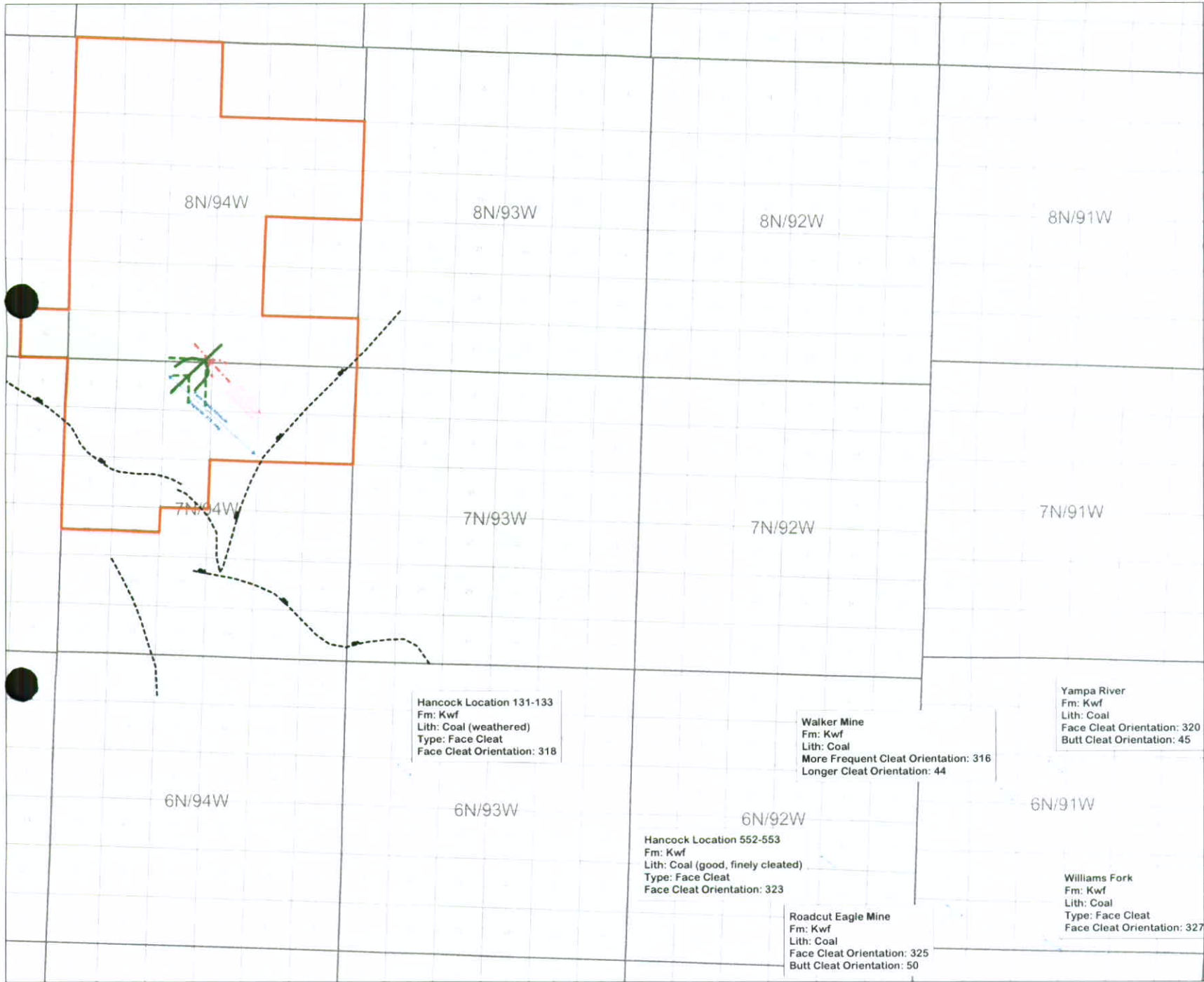
Docket No. 0606-SP-27

Exhibit L-6 New Well Plan - ARIES 34-12X

Proposed Communitized lands for the ARIES 34-12X Well being the S2/S2 of Section 33 in Township 8 North, Range 94 west, and NE/4 and NW/4, and N2/SE4 and N2/SW4 of Section 4 in Township 7 North-Range 94 West, 6th P.M., limited to the Williams Fork Coal Formation as defined from the depth of 3,536' to 4,708' and its stratigraphic equivalents in the Argo 33-16 well located in the SE/4SE/4 of Section 33, Twn 8 North-Rge 94 West, 6th P.M.



Docket No. 0606-SP-27



EXPLANATION

WILLIAMS FORK COAL CLEAT ORIENTATION

FACE CLEAT

BUTT CLEAT

AGES 34-12X POSSIBLE PITCH-FORK EXAMPLE

AGES 34-12X POSSIBLE PIVOTE EXAMPLE

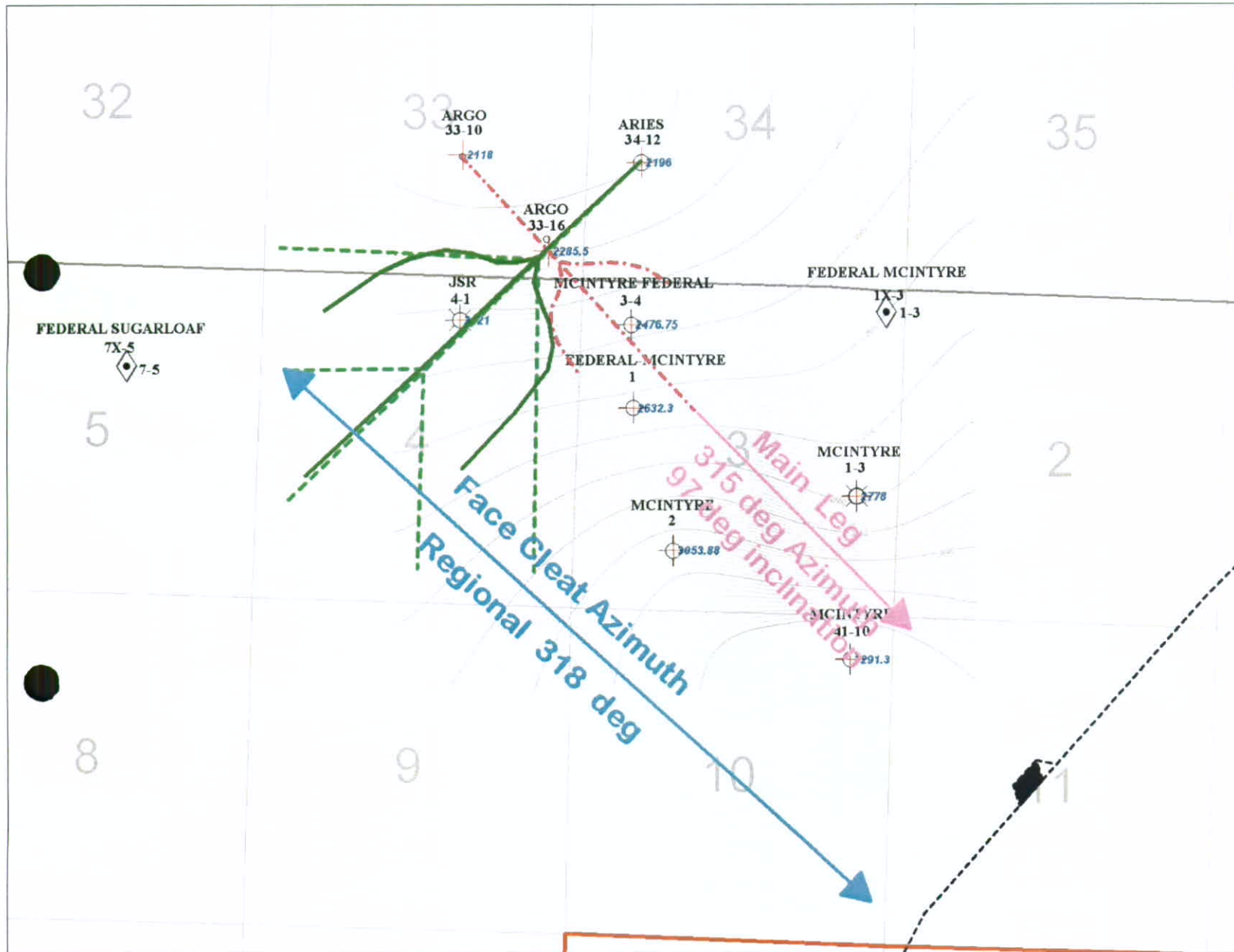
AGES 33-10X PREVIOUS PATTERN

FAULTS - USCG

CDX GAS

EXHIBIT G-1

Sugarloaf
Possible Pivote/Pitchfork Patterns
with Regional Cleat Trends
Measurde Group - CBM
Boulder County, Colorado



EXPLANATION

ARIES 34-12X POSSIBLE FITCHFORK PATTERN

ARIES 34-12X POSSIBLE Z-PINNATE PATTERN

ARGO 33-10X PREVIOUS PATTERN

WELLS

Straight hole well

Well Status
 D&A
 D&A-O
 GAS
 GAS-WO
 INA-GAS

Deviated well - Surface location

Deviated well - Surface location

FAULTS - USGS

POSSIBLE FUTURE CDX WELL LOCATION

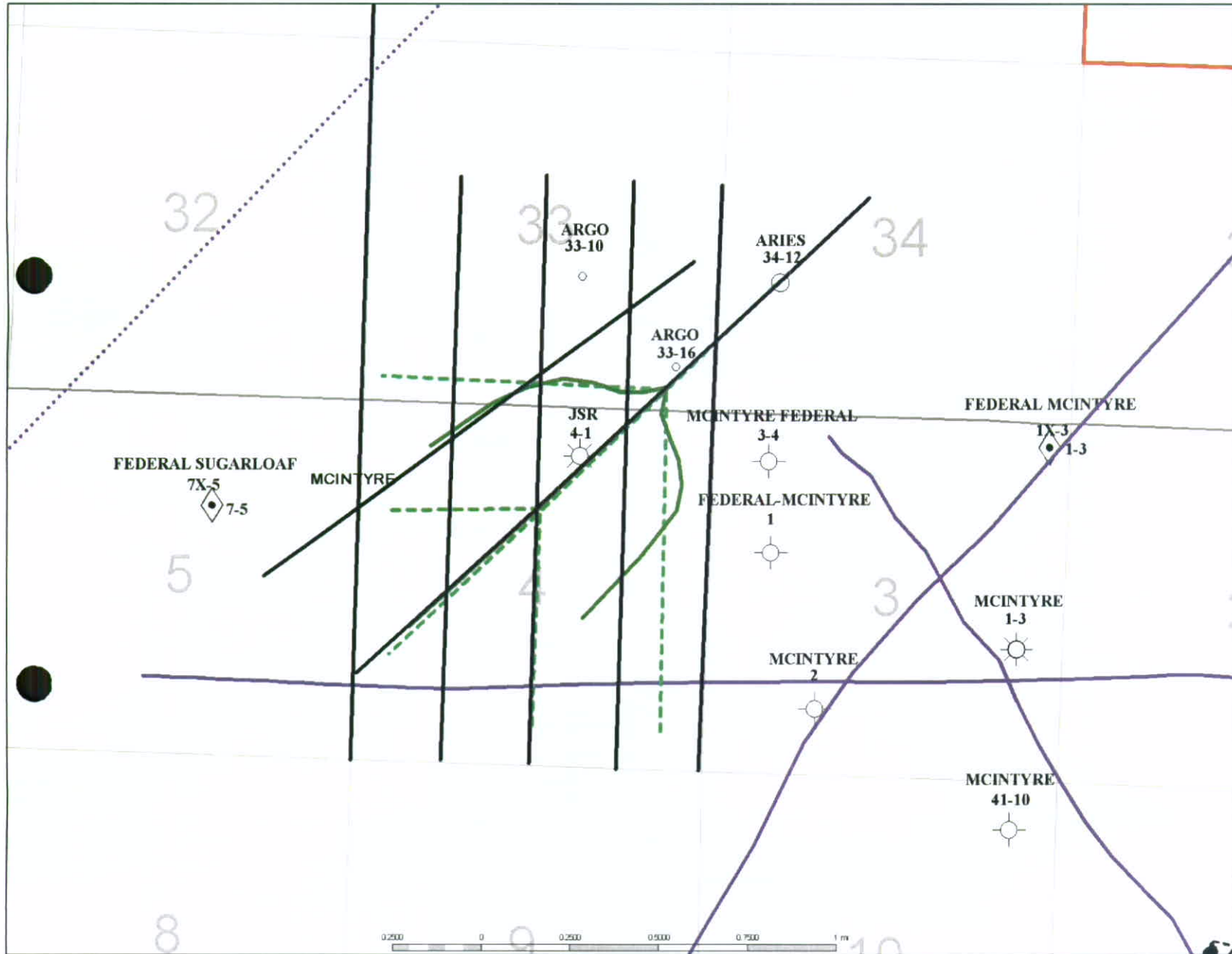
TOP SUGARLOAF MAIN COAL (SUBSEA)

CDX GAS

EXHIBIT G-2

Sugarloaf
 Structure map and well patterns
 McQuay's Group - GGS
 Moffat County, Colorado

REVISED 2006
 PREPARED BY: [Name]
 CHECKED BY: [Name]
 APPROVED BY: [Name]



EXPLANATION

SWATH SHOT & RECEIVER PAIR

ARIES 34-12X POSSIBLE RITCHFORK

ARIES 34-12X POSSIBLE Z-PINNATE

2D LINE CDX PLANS TO PURCHASE

2D LINES PURCHASED BY CDX

WELLS

Straight hole well

Well Status

- D&A
- D&A-O
- GAS
- GAS-WO
- INA-GAS

Deviated well - Surface location

Deviated well - Surface location

CDX GAS

EXHIBIT G-3

SUGARLOAF
 PROPOSED 2D SEISMIC SWATH
 W & S WIDE SECTORS - GSW
 IN FAT COUNTY - COLORADO

APRIL 22, 2008
 Authors: D. Hargrett and T. Little
 Checked by: J. Hargrett, D. Hargrett, T. Little