

COGCC GIS Online Interactive Map – 2017 Update

The COGCC has updated the interactive GIS map to hopefully be more stable and responsive with enhancements in the following areas:

1. Map functionality
2. New map layers
3. Map layer organization and labeling

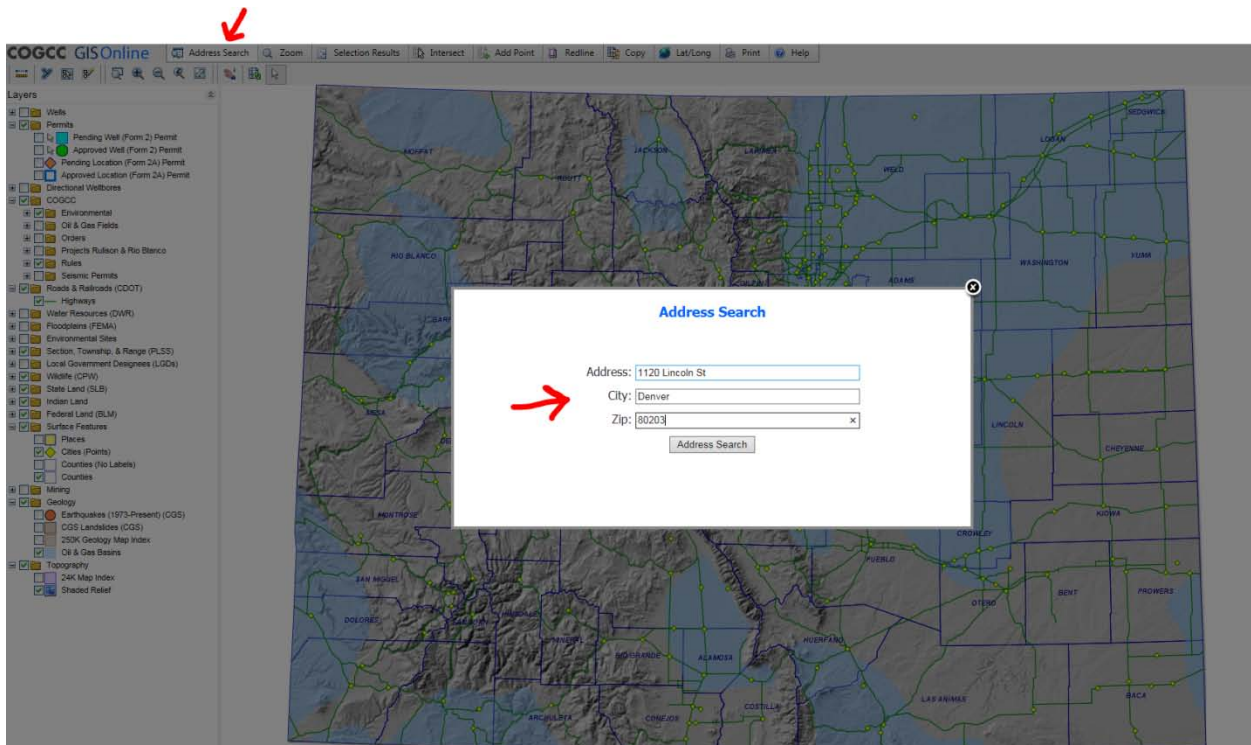
Below is a short description of some key changes.

If you have any questions, comments, or feedback, please let us know!

#1] Map functionality

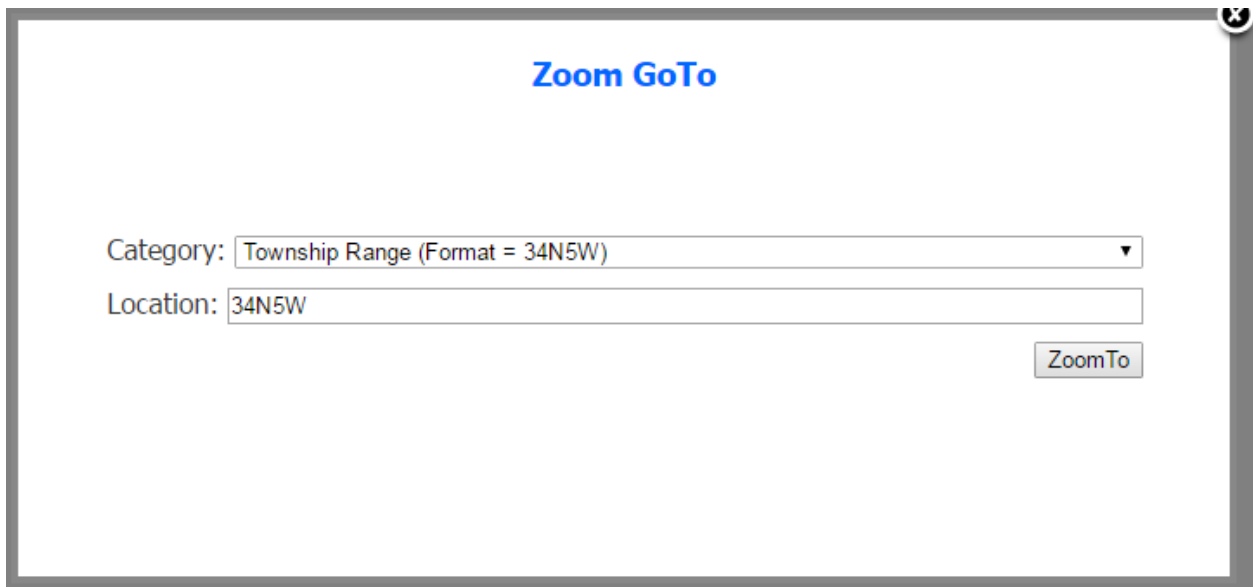
Address Search

The ability to search for a location by address has returned (use first tab across the top):



Zoom GoTo Tool

- The Zoom GoTo tool (tab found across top) should now work correctly with all the various search criteria.
- When entering a value you can now hit 'Enter' on the keyboard, as well as clicking on the 'ZoomTo' button.



Zoom GoTo

Category:

Location:

- You can zoom based on a **county parcel ID**. At this time we include parcel data for the following counties on the map:

| | |
|-------------|------------|
| Arapahoe | Larimer |
| Archuleta | Mesa |
| Boulder | Montezuma |
| Broomfield | Montrose |
| Clear Creek | Morgan |
| Denver | Ouray |
| Douglas | Pitkin |
| Garfield | Pueblo |
| Gilpin | Rio Blanco |
| Grand | Routt |
| Gunnison | San Miguel |
| La Plata | Weld |

We plan to add more county parcel information as the GIS data becomes available to us.

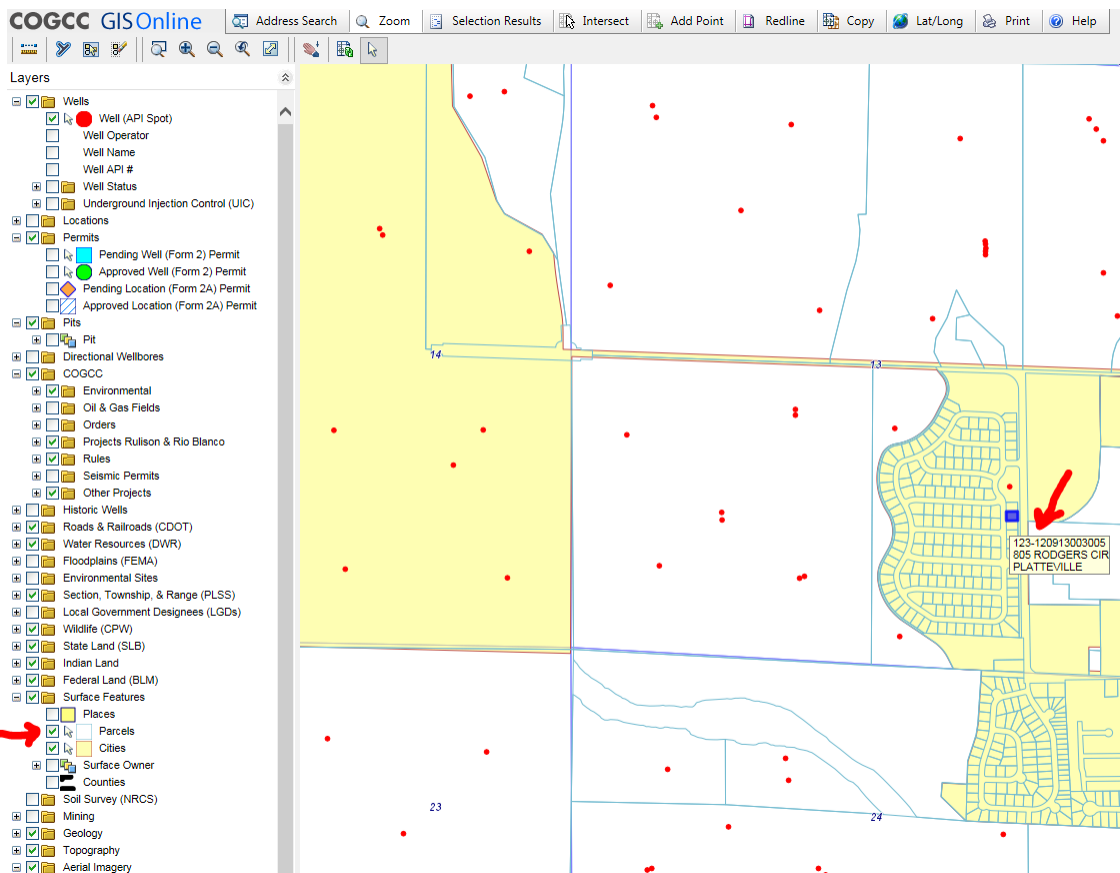
- When you use the Zoom GoTo tool for Well API, Location Number, and County Parcel Number, it will now show what you are zooming to as selected (i.e. blue).
- The scale at which the Zoom GoTo will go to upon execution has been modified for several of the search criteria. For cities now, you shouldn't zoom so far into the center of the city to the point where you can't easily locate yourself.

Add Point Scale

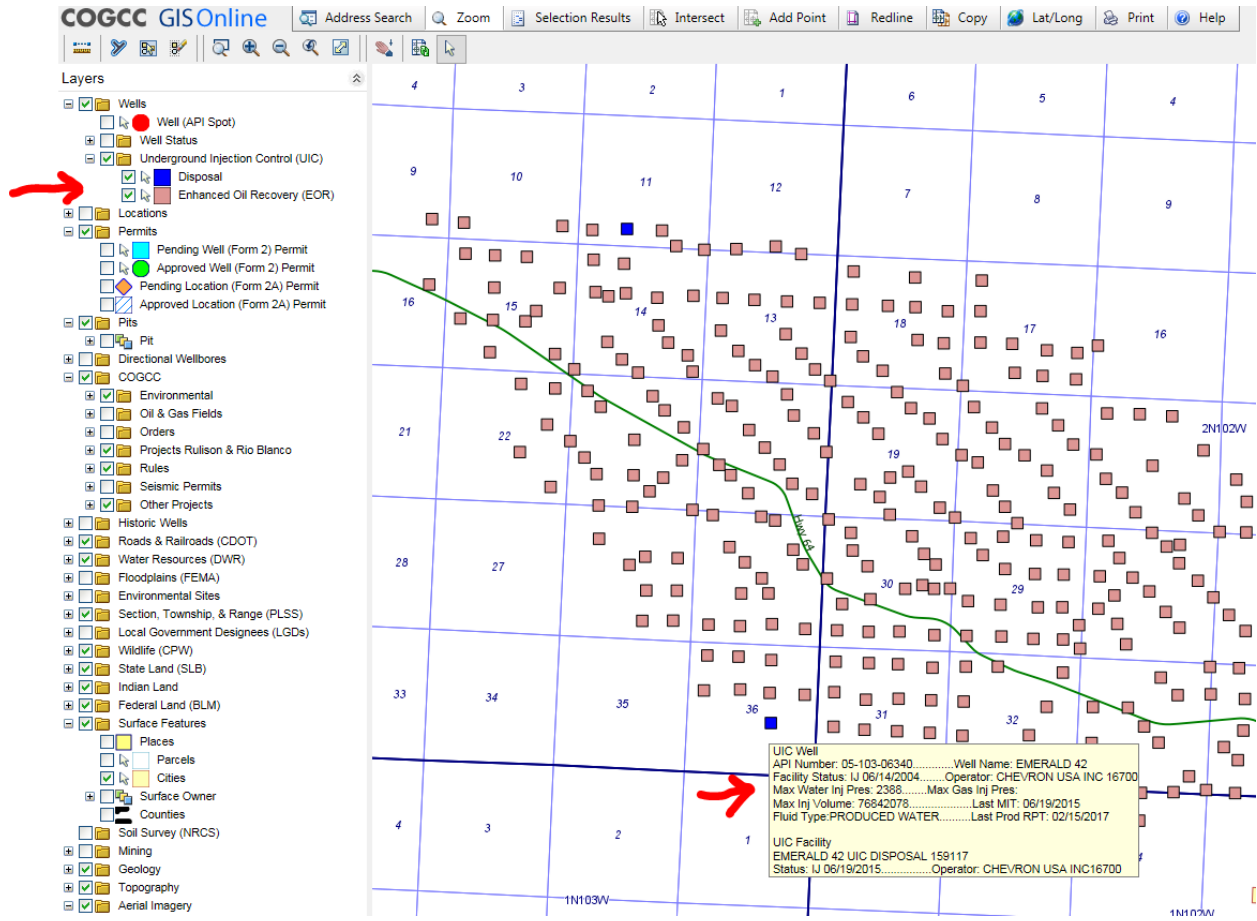
- The scale at which you zoom in to when using add point feature has been changed to 1:25,000 (from 1:50,000) so you'll be zoomed in at a closer scale, which we think will be better.

#2] New map layers

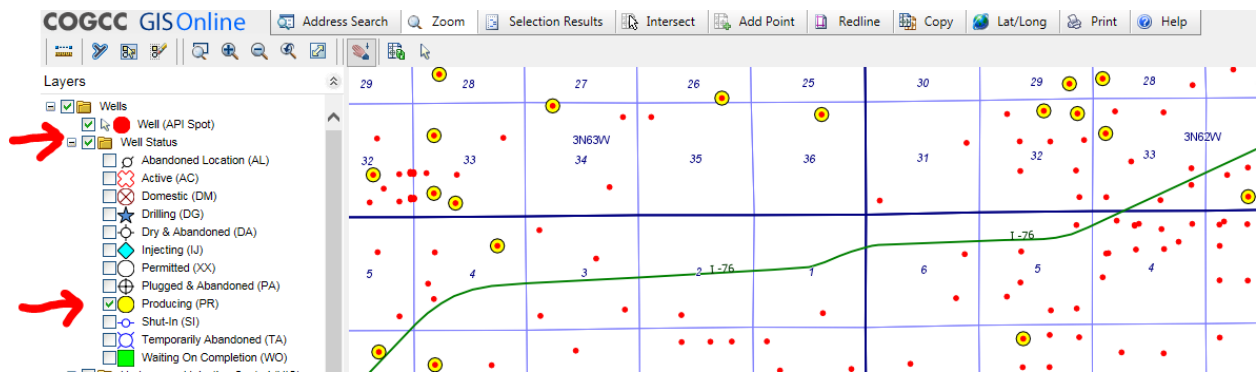
County parcel data is now available for select counties (see list above). With this layer turned on you can hover over specific parcel with mouse pointer to see the parcel ID and address:



Underground Injection Control (UIC) information is now available as a separate layer, including both disposal and enhanced oil recovery wells. Hovering over a UIC location with pointer will show basic information about that site:



Well Status layer has been expanded to allow one to show select statuses, rather than all or none. For example, here are just the producing wells being displayed:



#3] Map layer organization and labeling

The first thing you'll notice is we've moved many of the layers and changed data groupings:

- Wells
- Permits
- Directional Wellbores
- COGCC
- Roads & Railroads (CDOT)
- Water Resources (DWR)
- Floodplains (FEMA)
- Environmental Sites
- Section, Township, & Range (PLSS)
- Local Government Designees (LGDs)
- Wildlife (CPW)
- State Land (SLB)
- Indian Land
- Federal Land (BLM)
- Surface Features
- Mining
- Geology
- Topography

We think this organization is more sensible and will make finding data easier. We also have changed and expanded map layer labels in hopes that features will be more self explanatory to someone less familiar with the information we present.

Note that *O&G Facilities* and *COGCC Data* groupings on the previous map have been redistributed into *Wells*, *Locations*, *Permits*, *Pits*, *Directional Wellbores*, and *COGCC* groupings:

Wells (when zoomed <1:150,000)

- Wells
 - Well (API Spot)
 - Well Status
 - Abandoned Location (AL)
 - Active (AC)
 - Domestic (DM)
 - Drilling (DG)
 - Dry & Abandoned (DA)
 - Injecting (IJ)
 - Permitted (XX)
 - Plugged & Abandoned (PA)
 - Producing (PR)
 - Shut-In (SI)
 - Temporarily Abandoned (TA)
 - Waiting On Completion (WO)
 - Underground Injection Control (UIC)
 - Disposal
 - Enhanced Oil Recovery (EOR)

Locations (when zoomed <1:500,000)

- Locations
 - Approved Location (Form 2A)
 - Location
 - Active
 - Closed
 - Abandoned

Permits

- Permits
 - Pending Well (Form 2) Permit
 - Approved Well (Form 2) Permit
 - Pending Location (Form 2A) Permit
 - Approved Location (Form 2A) Permit

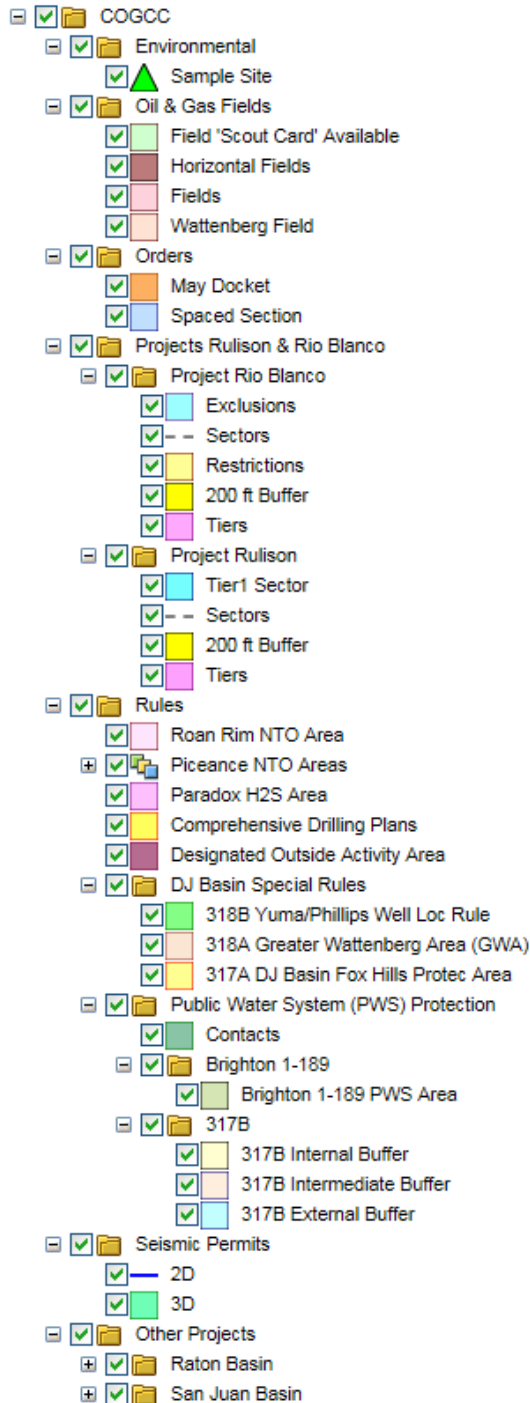
Pits (when zoomed <1:1,000,000)

- Pits
 - Pit
 - Active
 - Closed
 - Unknown

Directional Wellbores (when zoomed <1:500,000)

- Directional Wellbores
 - Actual
 - Form 5 Survey
 - Planned
 - Form 2 Survey
 - Pending (NOT YET APPROVED)
 - Surveys Pending
 - Form 2
 - Form 4
 - Form 5

COGCC (when zoomed <1:150,000)



The COGCC folder group consolidates many map layers that were previously in other groupings. Of particular note is the *Rules* subfolder, which includes any spatial boundary data related to COGCC rules.