



Top Stories

◆ Small Operator Outreach

In January 2016, the COGCC began to facilitate a series of in-person discussions between COGCC Staff and smaller oil and gas operators. The goal of the series was both to help these operators understand and comply with COGCC regulations, and to help COGCC Staff understand small operator concerns. To begin the dialogue, a survey was sent to all Colorado operators with less than 100 wells, asking each what topics should first be addressed at an upcoming in-person meeting. Two sessions, each located outside Denver, were then planned using the input from the survey.

The COGCC held these meetings on March 1 in Limon and March 16 in Ft. Lupton. Nearly 50 industry representatives attended each meeting. The meeting started with COGCC Staff briefly introducing the Field Inspection Process, Reclamation, Enforcement, Financial Assurance, and Form 42 notifications. Then, for operators who had individual or specific questions, COGCC Staff were available at breakout tables.

The small operator representatives in attendance expressed appreciation for the opportunity to meet with COGCC Staff and hear staff's guidance on particular issues. Plans are in the works for similar meetings on the Western Slope in the coming months.

COGCC Staff included Dave Kulmann, Deputy Director for Operations, and the following work units: Engineering (Diana Burn, Mark Schlagenhauf), Field Inspections (Margaret Ash, Mike Leonard, James Precup, Craig Quint, Susan Sherman, John Montoya, Jeffrey Rickard, and Jason Gomez), Reclamation (Denise Arthur, Chris Binschus, Aaron Trujillo, and Ryan Costa) Oil and Gas Location Assessment (Melissa

Housey, Doug Andrews), Environmental (John Axelson), and Hearings (Nancy Prince, Jeremy Ferrin).

◆ Year in Review: Statewide Production

In 2015, Colorado produced 127 million barrels of oil – an increase of 32.8 percent compared to 2014. Despite deterioration in oil's market price, 2015 marked the fourth consecutive year of year-over-year production gains greater than 30 percent in Colorado, and the third consecutive year in which annual production set a new all-time high.

Five years ago, Colorado was ranked tenth in the nation for oil production. However, since 2010, Colorado's output has outpaced oil production in Wyoming, Louisiana, and Kansas, and the state is now ranked seventh based on 2015 production. For natural gas, total statewide annual production climbed 3.8 percent to 1.705 Tcf (trillion cubic feet) in 2015. Among the 50 states, Colorado remains in sixth place nationally for natural gas production.

◆ Local Government Liaison Program

Marc Morton and Nancy Prince, COGCC Local Government Liaisons (LGLs), work to promote the benefits of participation in the nationally unique Local Governmental Designee (LGD) program offered by the COGCC. In their roles as LGLs, Nancy and Marc strive to enhance collaboration between local governments and the COGCC in its mission to regulate oil and gas in Colorado. They provide information, training, outreach, and consultation to LGDs, other local government staff, the public, non-governmental organizations, industry representatives, elected officials, and others interested in collaborating with the COGCC.



The LGLs also participate in educational forums and panel discussions, and along with COGCC management, provide assistance and guidance to local governments as they develop MOUs and local regulations pertaining to oil and gas facilities and land use.

And as a reminder to all participating LGDs, it is important to notify the COGCC (via submittal of an updated Form 29) of any change in your email address or contact information, or of a change in the status of your participation in the LGD program. The link to the Form 29 is available at this location on the COGCC website (cogcc.state.co.us) under the [Regulation](#) tab, and then under the [Forms](#) tab, or via the link below:

http://cogcc.state.co.us/documents/reg/Forms/PDF_Forms/form29.pdf

At present, 167 local governments participate in the voluntary LGD program, including 55 counties, 101 municipalities, and 11 special districts. Information pertinent to local governments is available on the COGCC website (cogcc.state.co.us) under the [Government](#) tab, including a list of participating LGDs, LGD search tools, eForm login, LGD Newsletters, an LGD Program Fact Sheet, and other information. The 2016 LGD training schedule will also soon be posted here, but local government training is always available upon request by simply contacting the LGLs.

A list of the LGL outreach and public involvement activities conducted since the last staff report is included in the Public Outreach section below.

Public Outreach

➤ *Outreach by Director and Other Staff*

- On March 9, Environmental Manager Greg Deranleau and Environmental Data Analyst Arthur Koepsell spoke to the Colorado Oil and Gas Association (COGA) Environmental Health and Safety and Regulatory (EHSR) Committee regarding the current status of the COGCC Groundwater Sampling Rules (609 and 318A.f.). The discussion included implementation of the groundwater sampling requirements and a description of how the collected data is beginning to be used for regional analyses and compliance evaluation.
- On March 10, Mark Schlagenhauf, Supervisor of the Engineering Integrity Group, presented "Risk Based Inspections Recommendation One Flowlines" and "Flowline Regulation Update" at the DJ Operator Consortium Meeting in Firestone.
- On March 21, Director Matt Lepore presented "Oil and Gas Law" at the DU Strum College of Law.
- On March 31, Director Lepore was a speaker at the Energy Council of West Weld.
- On March 24, LGL Marc Morton coordinated the Southwest Colorado Gas and Oil Regulatory Team (GORT) meeting in Durango and provided a talk titled "Summary of Current Oil and Gas Statistics." Other COGCC Staff also gave presentations. GIS Supervisor Chris Eisinger's presentation was entitled "Prioritizing Well Inspections in Colorado: A Risk-Based Approach." Environmental Manager Deranleau gave a talk titled "Governor's Task Force Rulemaking and Implications for Local Governments." Southwest Area Field Inspection Supervisor Steve Labowskie gave a talk titled "Hydrogen Sulfide - Overview of COGCC Rule 607 Measurement and Notification Requirements."
- On April 7, LGL Morton coordinated the Northwest Colorado Forum on Oil and Gas meeting in Rifle and provided a talk titled "Summary of Current Oil and Gas Statistics." Engineering Manager Stuart Ellsworth provided the COGCC update and presented a talk titled "Notice to Operators - Rule 912 Venting or Flaring Produced Natural Gas - Statewide." Environmental Manager Deranleau gave a talk titled "Governor's Task Force Rulemaking and Implications for Local Governments." Quality



Assurance Supervisor Mike Leonard provided a talk titled “Risk Based Well Inspection Prioritization.”

- On April 7, LGL Morton attended the Garfield County Energy Advisory Board (EAB) meeting in Rifle, where Quality Assurance Supervisor Leonard’s talk, “COGCC Noise Control and Regulations,” addressed noise survey procedures, enforcement, and the noise technical work group process.

➤ **Outreach by LGLs**

- On March 1, Marc Morton attended the public outreach forum in Lakewood hosted by BLM regarding their proposed rule on Waste Prevention, Production Subject to Royalties,

and Resource Conservation (also known as the BLM’s flaring and venting rule).

- On March 3, Marc Morton travelled to Rifle and attended the monthly Garfield County Energy Advisory Board (EAB) meeting. He updated the group on the implementation of the recently completed Governor’s Task Force Rulemaking.
- On March 21, Nancy Prince attended a meeting of the Adams County Planning Commission regarding pending changes to county oil and gas regulations.
- On March 22, Nancy Prince attended a meeting of the Adams County Board of County Commissioners regarding pending changes to county oil and gas regulations.

Regional Activities

➤ **Northwest Colorado**

◆ **Northwest Colorado Oil and Gas Forum**

Remaining Northwest Colorado Oil and Gas Forum (NWF) meetings in 2016 are scheduled for August 4 and December 1. The August 4 meeting will be held at the Ute Theater in Rifle (132 E. 4th Street) from 9:00 a.m. to noon, and the December 1 meeting will be held in Rifle at the Colorado Mountain College in Clough Auditorium (3695 Airport Road).

NWF meeting agendas will be posted to the website approximately two to three weeks prior to each meeting, and emailed to those on the email distribution list. NWF meetings are open to the public, and a public comment period is held as part of each meeting.

Past presentations (dating back to 2006) are available on the COGCC website under the Library tab, then under the Local Public Forum tab, and finally under the Northwest Colorado Oil and Gas Forum Presentations link, or via the following website address:

<http://cogcc.state.co.us/library.html#/forums>

All parties wishing to be placed on the next meeting agenda or added to the distribution list for announcements should contact Marc Morton at 303-894-2100, ext. 5132 (direct), 720-415-4959 (mobile), or by email:

marc.morton@state.co.us

◆ **Project Rulison**

The email for Project Rulison submittals is

DNR_rulison.submittal@state.co.us

◆ **Project Rio Blanco**

The email for Project Rio Blanco submittals is

DNR_rioblanco.submittal@state.co.us

➤ **Southwest Colorado**

◆ **Fruitland Formation Outcrop Mitigation and Monitoring Projects**

South Fork Texas Creek Mitigation Site - La Plata County. Regularly scheduled operations and maintenance continue at the South Fork Texas Creek (SFTC) site, performed by LTE, the



COGCC's contractor. Since May 2009, the system has collected 17,215 Mcf of methane and generated 247,337 kWh of surplus electricity.

The results of the 2015 Fruitland outcrop monitoring efforts were presented at the First Quarter GORT Meeting by LTE; the 2015 Fruitland Outcrop Monitoring Report has been posted in the COGCC website library under the 3M project in the San Juan Basin at the following link:

[http://cogccintranet/documents/library/AreaReports/SanJuanBasin/3m_project/2015%20FRUITLAND%20OUTCROP%20MONITORING%20REPORT La Plata.pdf](http://cogccintranet/documents/library/AreaReports/SanJuanBasin/3m_project/2015%20FRUITLAND%20OUTCROP%20MONITORING%20REPORT%20La%20Plata.pdf)

◆ GORT Meetings

Remaining GORT meetings in 2016 are scheduled for July 28 and October 20. All meetings will be held in Durango at the Durango Public Library (1900 E. 3rd Avenue in Durango) from 8:30 a.m. to 11:30 a.m. GORT meeting agendas will be posted to the website approximately two to three weeks prior to each meeting, and emailed to those on the email distribution list. GORT meetings are open to the public, and a public comment period is held as part of each meeting.

All parties wishing to be placed on the next meeting agenda or added to the distribution list for announcements should contact Marc Morton at 303-894-2100, ext. 5132 (direct), 720-415-4959 (mobile), or by email:

marc.morton@state.co.us

Variations

◆ Mendell Finisterre II, LLC

On March 29, the COGCC Director granted Mendell Finisterre II, LLC (Mendell) a Rule 502.b. variance to Rule 603.a. for the Mendell Finisterre Afton 12-16H-3 well (API # 001-09790) in Adams County. Rule 603.a.(1) states that "At the time of initial drilling, a Well shall be located not less than two hundred (200) feet from buildings, public roads, major above ground utility lines, or railroads." As proposed, the well will be located 191 feet from the closest overhead power line.

The Location (ID #434921) was approved in 2013 with eight wells arranged in two rows of four on the pad. The wells in one row are located 191 feet from the overhead power line. The first two wells were permitted in 2013 when the Rule 603.a.(1) setback was 150 feet.

Mendell has stated that they will utilize a drilling rig with a derrick height of 142 feet and a total rig height of 158.2 feet. Mendell obtained a waiver of the 200 foot setback from United Power. The variance was granted through the approval of the Form 2 application.

◆ Noble Energy, Inc.

On March 23, the COGCC Director granted Noble Energy, Inc., a 502.b. variance to Rule 1002.b; Site Preparation and Stabilization, for oil and gas locations constructed on a private ranch in Weld County. The surface owner developed a process intending to protect topsoil but which does not include excavation, segregation, or identification of the topsoil layers. The oil and gas locations have been built over the topsoil and covered with road base or other all weather materials. Additional, planned oil and gas locations on the property will be built similarly.

After well activities are completed, the road-base will be removed and the area reclaimed according to COGCC rules including decompaction, recontouring, and revegetation.

◆ Bayswater Exploration and Production, LLC

On April 12, in accordance with Rule 303.i.(2), the COGCC Director approved the amended Form 2A Oil and Gas Location Assessment for the Bayswater Exploration and Production, LLC (Bayswater) Arellano 10-L Facility (ID# 440776) in Weld County prior to the conclusion of the 20 day



comment period. The operator requested the approval per Rule 303.i.(2) to avoid economic hardship that would have resulted from a delay in the sale of production from the facility.

The Arellano 10-L Facility is an existing, already built, production-facility-only location and had been permitted as a facility in a Buffer Zone and an Urban Mitigation Area. Following the location's construction, Bayswater informed the COGCC that

the location had been built in the Exception Zone.

The COGCC required the operator to amend the Form 2A to accurately reflect as-built distances to cultural features, obtain waivers from all Building Unit owners in the Exception Zone as provided by Rule 604.a.(1)A.i., and update their Best Management Practices for a facility in an Exception Zone as required by Rule 604.c.(3).

Admin / Organization / Other

◆ New Permit/Completions Tech

Shanelle Deater has joined the COGCC as a Permit/Completions Technician. Shanelle has been working in the Permitting Group since September as a contractor or temporary employee, and she has been performing completeness reviews of Forms 2 and 2A and processed Form 6s in Weld County. Shanelle has thirteen years of industry experience as an engineering technician, production technician, and regulatory technician. Shanelle's most recent experience was with WPX in the Williston Basin, where she was responsible for database management.

A COGCC organizational chart can be found on pages 8-11. For contact information, please go to our homepage, find the "About Us" menu, and select "Contact Us."

◆ Plugging and Reclaiming Abandoned Wells (PRAW) - Project Updates

The **Think Oil Bond Vaughn #1 Plug and Abandon (PA) Project** is located in Moffat County about two miles southwest of the Town of Craig. This well was drilled in 1950 to a total depth (TD) of 10,003 feet through the Weber sandstone and Morgan Formation. The well was later plugged in 1989, but was re-entered in 1992 and drilled to a depth of 3,025 feet.

The operator then directionally drilled the well to a true vertical depth (TVD) of 7,223 feet and a measured total depth (MTD) of 7,264 feet. The well was completed in the Niobrara Formation.

Because of mechanical problems and sub-economic production, the well was plugged in 1997. Various well site inspections by the COGCC found non-compliance with the Rules. An Order Finding Violation was issued and resulted in the COGCC claiming the bond for this well (Order 1V-458). An inspection in 2015 determined that gas was leaking from the well casing.

The COGCC decided to reenter and plug the well. Work commenced on this well during the second half of March, with an estimated final cost of \$73,143, or \$21,190 higher than the awarded bid price. Because orphan wells often lack critical information, the engineering bid documents and designs are based on the best available information.

Once the well is accessed, new and previously unreported information becomes available. Change orders are then made to achieve successful plugging, which may result in final costs exceeding the bid.

The **Think Oil Bond Silver Plug and Abandon (PA) Project** is located in Moffat County approximately one mile due west of the Town of Craig. This well was drilled in 1988 to a total depth (TD) of 8,280 feet and completed in the Niobrara Formation. Three sidetracks in the same formation were drilled off the original wellbore in 1991, resulting in the abandonment of the original wellbore and the first two sidetracks.

The principal owner of the well died, and the COGCC subsequently claimed the \$5,029 bond in 2014 (Order 1V-458). The well will be reentered and plugged at an estimated cost of \$70,900. Due



to wet ground conditions with snow melt, this well will be plugged during mid to late spring.

The **Midfields State #1 Plug and Abandon (PA) Project** is located in Yuma County about 12 miles south of the Town of Wray. This well was drilled to an approximate depth of 3,650 feet in 1919. In 2009, an onsite inspection found venting gas and rolling water in the well. The well was excavated to a depth of six feet, and no casing was found.

The limited available records indicate a 16 inch diameter surface bore. For safety purposes, panels were erected around the well, and the well was left open to the atmosphere to prevent shallow ground water contamination.

The engineering plugging design and bid documents are complete and will be sent out for bid shortly. The estimated cost has been revised from \$50,000 to \$50,250. The work interval will be between May 20 and June 10, 2016.

The **Dolphin Mulvihill #15-32D Reclamation Project** is located in Garfield County about 1.6 miles northeast of the City of Rifle. This well was PA'd in 2012, but the site must now be reclaimed. Plans include (1) an onsite meeting in the spring with the landowner, (2) reclamation design, and (3) estimation of the cost to do the work. At this time, the estimated cost for reclamation is \$25,000.

The **Redwine Bond South Nucla Unit #1-32 Environmental Pit Closure Project** is located in Montrose County about 28 miles southwest of the City of Montrose. The well was PA'd in May 2015 and is now ready for the closure of the drilling mud reserve pit. A contractor has been selected, and a purchase order in the amount of \$24,126 has been issued. Work commenced during the week of March 28.

The **Redwine Bond South Nucla Unit #1-32 Reclamation Project** is a follow up to the separate pit closure project and will involve the whole well site. The site is a cut and fill on a steep slope in the mountains with a drilling mud reserve pit in place. The cost to do this work has been estimated at \$96,235.

Three bids were received in the amounts of \$42,037, \$102,120, and \$109,244. The lowest bidder was awarded the project. This work interval will be between April 11 and May 13, 2016. The cost to re-seed has been bid at \$23,800, resulting in a total cost of \$65,837 to complete reclamation.

The **Rancher's BOND River West #2 Project** is located in Larimer County near the Town of Windsor. Production equipment remains at the location, but the well has not been PA'd. COGCC Staff are reviewing options for the disposition of the well. The location also requires weed and erosion control because of tall weed debris along the access road and around the production facilities.

During the week of February 28, the contractor 50 feet of silt fencing was repaired, 0.25 acres were mowed, rills were filled in, a ditch was cut and cleaned out, straw bales were set as sediment traps, and the location was tacked. The job was scaled back from the original design and quote of \$8,276, resulting in a final cost of \$4,170.

Page 12 contains a spreadsheet listing PRAW projects that are either scheduled, in process, or completed as of April 13, 2016.

◆ Colorado Oil and Gas Information System (COGIS) Projects, Updates and Changes

Electronic Form (eForm) Submissions

The COGCC uses 41 types of forms to authorize oil and gas operations, inspect and monitor ongoing operations, and receive reports of operations. Of those 41 forms, 20 are currently available for electronic submittal through the eForms system.

The development team continues to work on the eForm conversion of existing forms. Currently, four forms are in various stages of development: Forms 14, 14A, 27, and the Warning Letter. In addition, the development team updates eForms with improvements requested by Staff and as required by rule revisions. The Form 2A, Oil and Gas Location Assessment was revised to



accommodate the information required by the new rules effective March 16, 2016.

To date in 2016, 93 percent of the forms available in eForms were submitted electronically by industry. There are 666 operator users of eForms and 2,729 individual users. For any operator not currently enrolled in eForms, instructions for starting the process can be found on the COGCC website at:

<http://cogcc.state.co.us/Announcements/COUAINformation.pdf>

Form 27 eForm Development

The COGCC's Site Investigation and Remediation Workplan (Form 27) is currently being upgraded. The Governor's Office of Information Technology (OIT) has completed development of the eForm 27, and COGCC Staff have completed internal testing. Further testing by a select group of operators has begun and feedback is being received and incorporated into the final product.

Applications and Location Assessments

The public can make comments on all submitted Drilling Permit Applications (Form 2s) and Location Assessments (Form 2As) through the eForm system. Simply go to the COGCC website and click on the menu option "Permits" or

<http://cogcc.state.co.us/permits.html#/permits>

On the "Permits Search" page, three search options are available. The first option, "All Pending Permit Applications," is used for public comments. When the results are displayed for "Pending Applications," a user can click on the document number hyperlink in the "Status" column, which logs him or her to the eForms application. Once the page is displayed with the selected document, the user can select the Comment button to make a comment on that particular form.

Data Access

The COGCC's database is a comprehensive repository of Colorado's oil and gas data. The information in the database is available to the public through interactive search tools and a

variety of file downloads on the website.

Users of this data come from many different sectors of the community, including academia, oil and gas operators, environmental groups, government agencies, and the media. The number of these users and the variety of data requested are steadily increasing. Staff continues to publish additional data file downloads at:

<http://cogcc.state.co.us/data2.html#/downloads>

Current Data File Downloads

- Complaints
- Field Operations
- GIS Shapefiles (12 files)
- Mechanical Integrity Tests
- Notices of Alleged Violation
- Production Data (1999 - present)
- Spacing Orders
- Spills and Releases
- Water Well Data

Future Data File Downloads

- Enforcement Orders (OFVs and AOCs)
- Underground Injection Control (UIC) Data

◆ June 2016 Hearing Docket

The docket for the June 2016 hearing will be available shortly after the April hearing. Hearing dockets are available on our website by clicking on "Regulation" in the menu and then "Hearings":

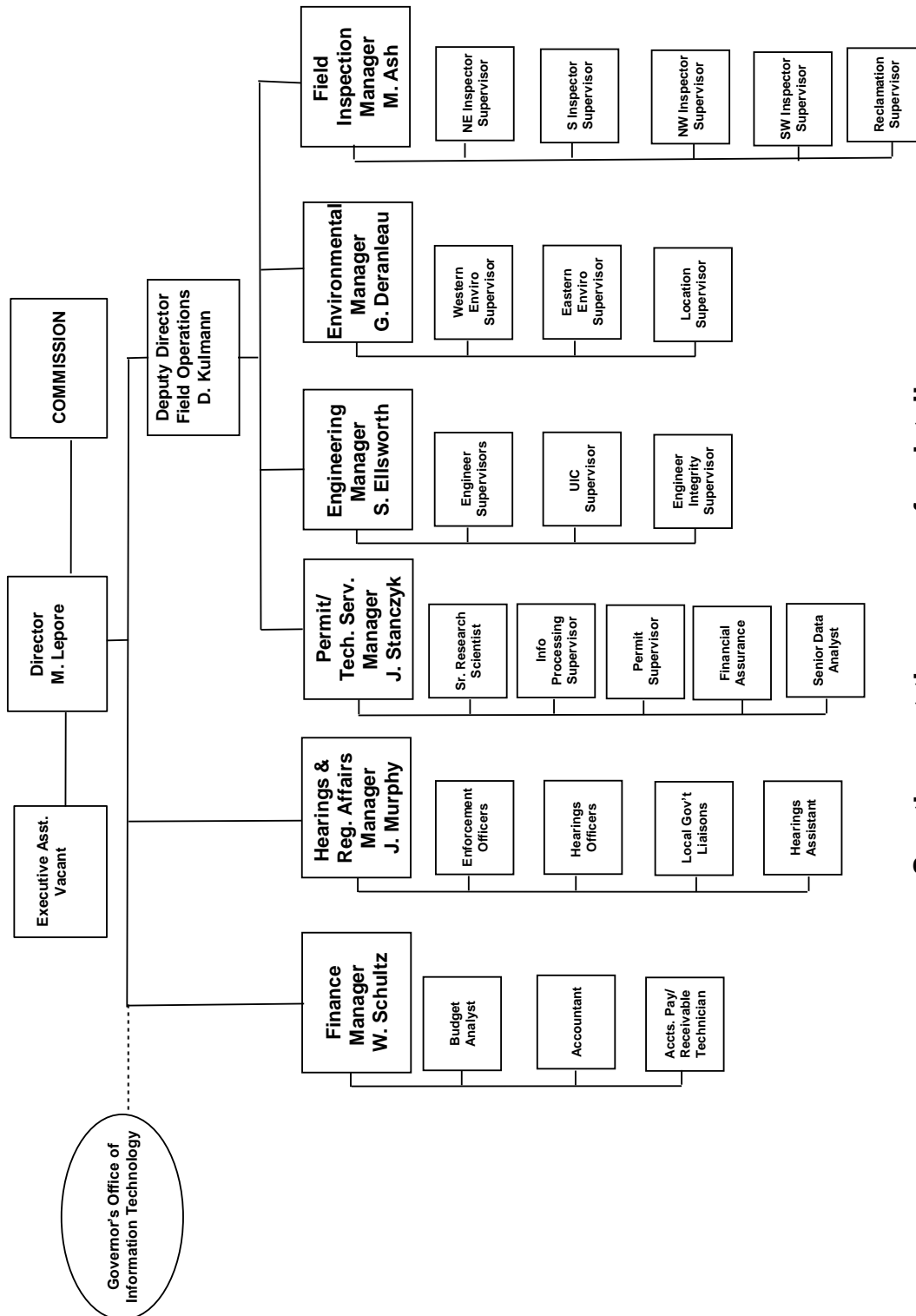
<http://cogcc.state.co.us/reg.html#/hearings>

Links to the notices and hearing applications are available from the Docket Number and Applicant, respectively, by clicking the June Gen_Docket link. To sign up for email notification of hearing notices and applications, please see the announcement and instructions on the homepage of the COGCC website.



Organizational Charts and Statistics

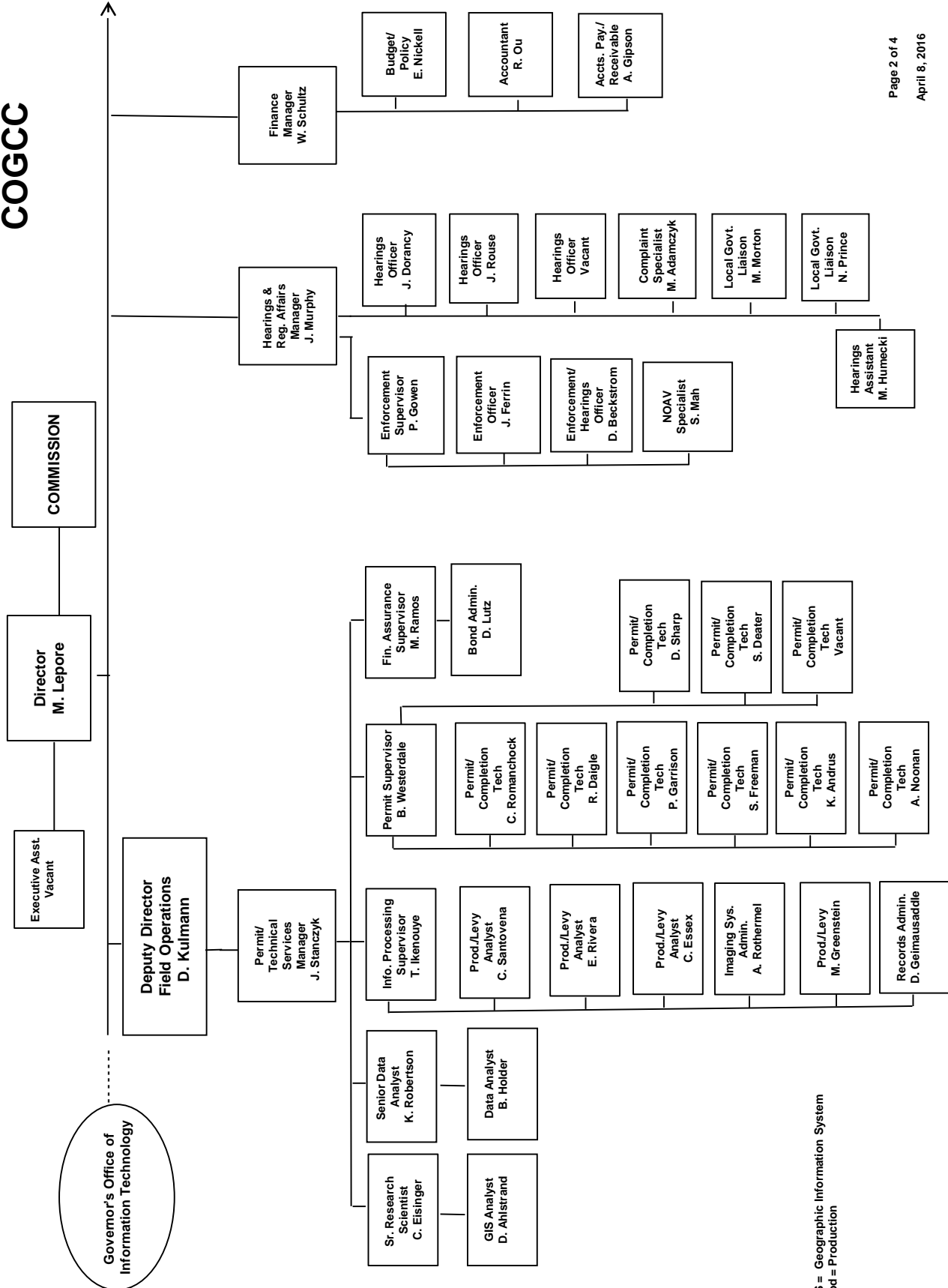
COLORADO OIL & GAS CONSERVATION COMMISSION



See the next three pages for details

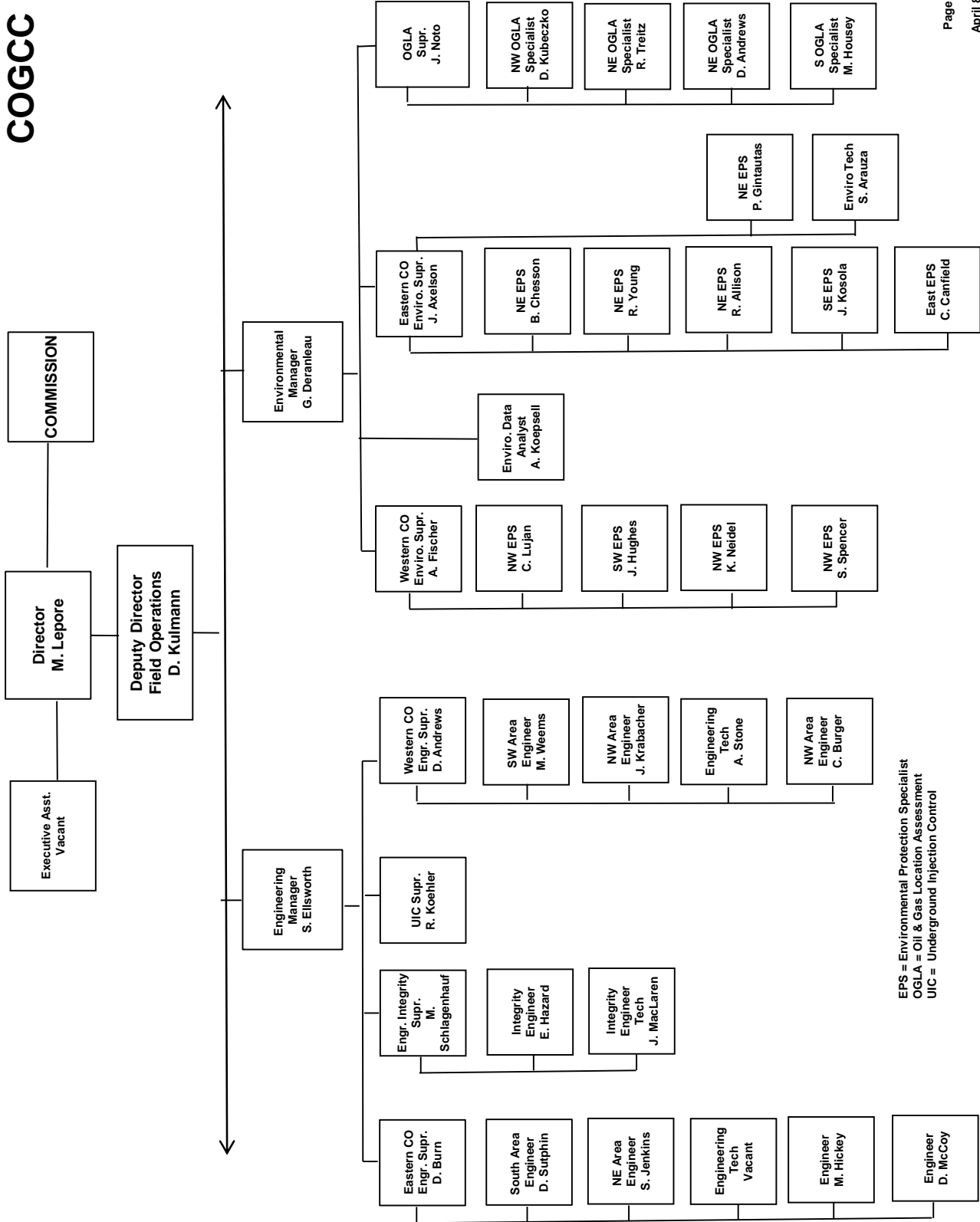


COGCC





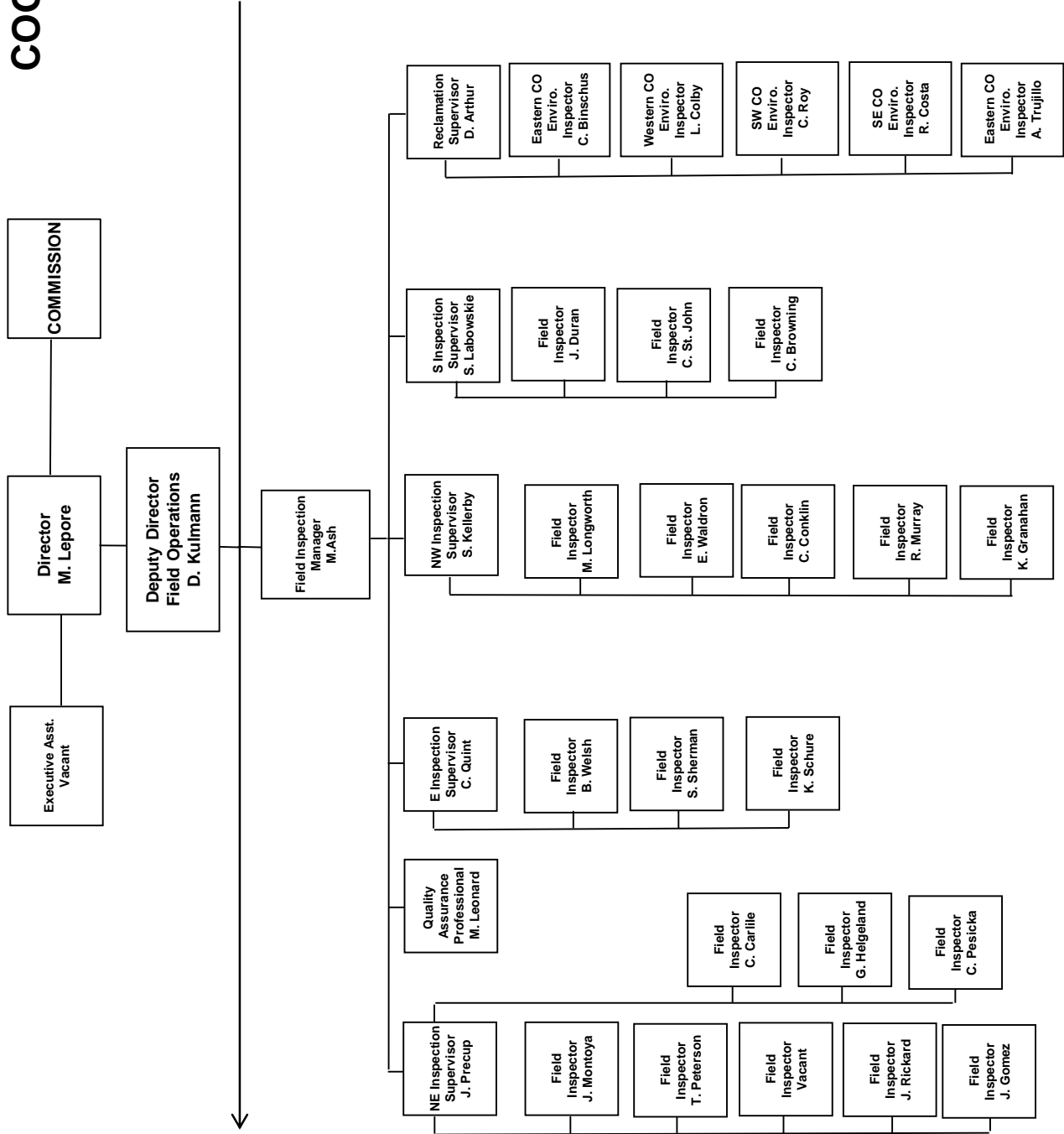
COGCC



EPS = Environmental Protection Specialist
 OGLA = Oil & Gas Location Assessment
 UIC = Underground Injection Control



COGCC





**PLUGGING AND RECLAIMING ABANDONED WELLS (PRAW) FOR ORPHANED LOCATIONS
FISCAL YEAR 2015-16**

PLANNED FY 2015-16 YTD EXPENDITURES												
ESTIMATED TOTAL PROJECT COST												
County	Type	Project Name	Project No.	Bond	PRAW	EMGY	Totals	Bond	PRAW	EMGY	Totals	Description
La Plata	PA	Wheeler #2	2008-08		\$ 48,970		\$ 48,970					An orphan well to be PA; drilled in 1969 to a TD=2,900'; plugged back to 1,420 in 1970.
Moffat	PA	Think Oil Bond Silver et al #1	2015-11	\$ 5,029	\$ 65,871		\$ 70,900					Drilled in 1988 to a TD=8,280'; completed in the Niobrara. Three sidetracks were drilled in 1991. Principle deceased. Bond claimed 2014.
Garfield	RECL	Dolphin -Mullivhill #15-32D	2016-02		\$ 25,000		\$ 25,000					Dolphin Energy Corp well pad and lease road near Rifle.
Montrose	RECL	Redwine Bond - SNU #1-31	2013-17-21		\$ 65,837		\$ 65,837					Plugged May 2015; pit and well pad reclamation with cut and fill on steep terrain.
TOTALS =>				\$ 5,029	\$205,678	\$ 0	\$ 210,707					

IN PROGRESS FY 2015-16 YTD EXPENDITURES												
ESTIMATED TOTAL PROJECT COST												
County	Type	Project Name	Project No.	Bond	PRAW	EMGY	Totals	Bond	PRAW	EMGY	Totals	Description
Yuma	PA	Midfields State #1	2014-10		\$ 50,250		\$ 50,250					Drilled in 1919 to TD=3,650'. Gas flow & rolling water. Excavated to a depth of 6'. Installed 18" OD PVC to a depth of 20'.
Montrose	ENV	Redwine Bond - SNU #1-31	2013-17-41		\$ 24,126		\$ 24,126					Drilling mud reserve pit closure.
TOTALS =>				\$ 0	\$ 74,376	\$ 0	\$ 74,376	\$ 0	\$ 0	\$ 0	\$ 0	

COMPLETED FY 2015-16 YTD EXPENDITURES												
ESTIMATED TOTAL PROJECT COST												
County	Type	Project Name	Project No.	Bond	PRAW	EMGY	Totals	Bond	PRAW	EMGY	Totals	Description
Moffat	PA	Think Oil Bond - Vaughn #1	2015-09	\$ 7,542	\$ 44,411		\$ 51,953	\$ 7,542	\$ 65,601		\$ 73,143	Drilled in 1950 to a TD=10,000'; PA in 1989; re-entered in 1999 and directionally drilled to a MTD=7,264'; Niobrara completion; PA 1997; principal owner deceased; gas leak found; bond claimed; PRAW re-enter PA project.
Ouray	PA	Ridgway-Swanson-Peterson #1	2012-27		\$ 55,355		\$ 55,355		\$ 39,735		\$ 39,735	Drilled in 1947 to a TD=500'; turned over to landowner at some point in time for domestic use gas hookup; stopped producing gas and will be PA by PRAW Bond claimed 8/20/2012 Order #1V-395; surface production equipment removed in July 2015.
Adams	PA	Ruth #1 Bond PA	2013-15	\$ 5,000			\$ 5,000	\$ 5,000			\$ 5,000	Revegetate the site.
Larimer	RECL	Ranchers Bond River West #2	2016-05-21	\$ 8,276			\$ 8,276	\$ 4,170			\$ 4,170	Soil bed prep; seed and cover with straw.
Garfield	RECL	Dolphin Arroyo #9-16D	2015-06		\$ 2,500		\$ 2,500		\$ 2,691		\$ 2,691	Mowing.
Mesa	RECL	DeBeque Orphans-Buckeye #1	2016-04		\$ 196		\$ 196		\$ 196		\$ 196	EPS soil analysis complete for the pit at the CTB and deemed ready for reclamation with no need for soils remediation.
Adams	ENV	Ruth BOND #1	2013-16		\$ 1,045		\$ 1,045		\$ 1,045		\$ 1,045	BOND Total Available = \$67,038.37.
La Plata	ENV	Red Mesa Holdings Bond - JCK #1	2016-01	\$ 4,228			\$ 4,228	\$ 4,228			\$ 4,228	HZ Well Policy-Operator to plug well; COGCC to pay for samples, plans, remediation and disposal.
Weld	ENV	Carl A. Peters #1	2016-07		\$ 1,330		\$ 1,330		\$ 1,130		\$ 1,130	Follow up soils analysis for prior remediation.
Logan	ENV	Luther #2	2014-19-41		\$ 610		\$ 610		\$ 610		\$ 610	
TOTALS =>				\$25,046	\$105,447	\$ 0	\$ 130,492	\$20,940	\$ 111,008	\$ 0	\$ 131,948	

SCOREBOARD (PRAW FUNDING ONLY)											
ESTIMATED TOTAL PROJECT COSTS											
County	Type	Project Name	Project No.	Bond	PRAW	EMGY	Totals	Bond	PRAW	EMGY	Totals
GRAND TOTALS				\$30,075	\$385,501	\$ 0	\$415,575	\$20,940	\$111,008	\$ 0	\$131,948

ABREVIATIONS									
TYPE	PA=plug & abandon	RECL=reclamation	ENV=enviro remediation						
EMGY	Funding from the Emergency Response (Budget Line Item)								
PRAW	Funding from the Plug Recl Abandon Well (Budget Line Item)								
TBD	To be determined								

SCOREBOARD (PRAW FUNDING ONLY)	
\$	74,376 In Progress Estimated Totals
-	In Progress Spent to Date Totals
	74,376 In Progress Remaining Totals
	111,008 Completed to Date Totals
	111,008 Sum of (In Progress Spent to Date) and (Completed to Date Totals)
	280,054 Planned + in progress remaining
\$	391,062 Total Expenditures
\$	445,000 Annual Budget Appropriation
\$	53,938 Projected End of Year Balance



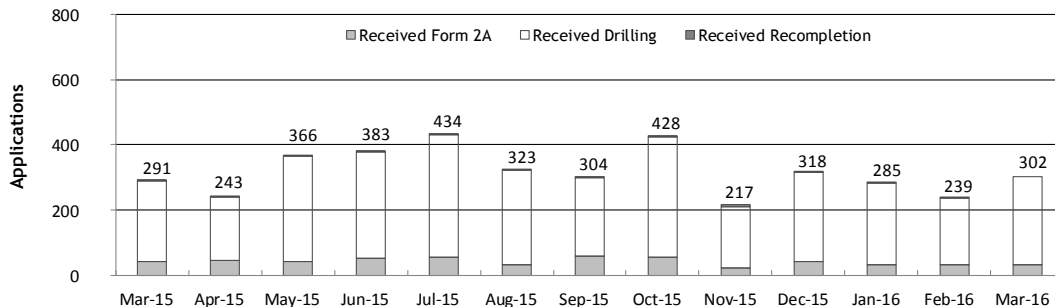
Monthly Permit Activity as of April 1, 2016

Form/Month	Backlog	Received	Approved	Withdrawn	Rejected	Incomplete ¹	In-Process	Remaining ²
Form2A								
Mar-15	164	44	70	2	1	30	105	135
Apr-15	135	46	37	3	0	38	103	141
May-15	141	41	44	0	1	41	96	137
Jun-15	137	52	49	3	1	24	112	136
Jul-15	136	57	48	2	1	25	117	142
Aug-15	142	32	46	0	1	35	92	127
Sep-15	127	59	49	3	4	25	105	130
Oct-15	130	54	51	4	0	14	115	129
Nov-15	129	21	49	1	1	16	83	99
Dec-15	99	42	43	2	0	27	69	96
Jan-16	96	34	9	1	0	29	91	120
Feb-16	120	31	39	1	0	32	79	111
Mar-16	111	34	36	3	0	27	79	106
Drilling								
Mar-15	706	246	294	14	0	226	418	644
Apr-15	644	194	165	17	0	295	361	656
May-15	656	324	190	30	0	254	506	760
Jun-15	760	327	281	9	5	175	617	792
Jul-15	792	373	250	2	15	153	745	898
Aug-15	898	289	300	18	111	159	599	758
Sep-15	758	242	312	7	32	112	537	649
Oct-15	649	372	223	17	16	104	661	765
Nov-15	765	190	254	3	0	106	592	698
Dec-15	698	275	242	13	6	159	553	712
Jan-16	712	250	126	4	30	201	601	802
Feb-16	802	205	227	1	15	212	552	764
Mar-16	764	268	268	16	59	220	469	689
Recompletion								
Mar-15	9	1	6	0	0	1	3	4
Apr-15	4	3	1	0	0	2	4	6
May-15	6	1	4	0	0	2	1	3
Jun-15	3	4	1	0	0	2	4	6
Jul-15	6	4	2	0	0	1	7	8
Aug-15	8	2	6	1	0	1	2	3
Sep-15	3	3	1	0	0	1	4	5
Oct-15	5	2	2	1	0	1	3	4
Nov-15	4	6	2	0	0	1	7	8
Dec-15	8	1	5	2	0	0	2	2
Jan-16	2	1	0	0	0	1	2	3
Feb-16	3	3	0	0	0	2	4	6
Mar-16	6	0	0	0	0	2	4	6

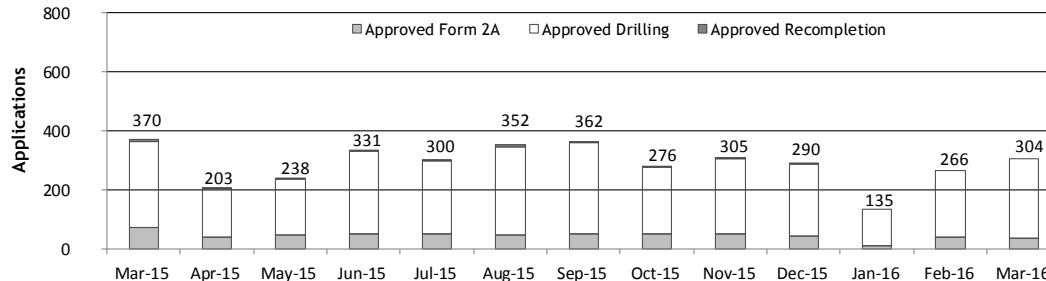
¹ Incomplete are applications that have missing or inaccurate data and cannot be approved.

² Backlog = Incomplete + In-process = Remaining permits from previous month.

Received Applications



Approved Applications





Status of Permit Applications Filed By Month as of April 1, 2016

Form 2A Location Assessment

Year	Month	Received	Approved	Withdrawn	In Process	Percent In Process	Average	Less Than 30 Days	30 to 49 Days	Greater Than 50 Days
							Days to Process			
2011	TOTAL	2,391	2,298	93	0	0%		1,416	620	262
2012	TOTAL	1,359	1,291	68	0	0%		706	378	207
2013	TOTAL	1,281	1,202	78	1	0%		369	433	400
2014	TOTAL	1,114	1,065	44	5	0%		279	429	357
2015	JAN	49	48	1	0	0%	57	6	15	27
	FEB	69	65	3	1	1%	66	5	16	44
	MAR	54	47	6	1	2%	59	6	20	21
	APR	39	39	0	0	0%	64	8	13	18
	MAY	40	39	1	0	0%	60	6	12	21
	JUN	54	52	2	0	0%	57	10	17	25
	JUL	45	44	0	1	2%	71	4	12	28
	AUG	68	65	2	1	1%	58	11	21	33
	SEP	58	54	2	2	3%	57	16	9	29
	OCT	53	46	2	5	9%	77	3	10	33
	NOV	21	16	1	4	19%	70	2	4	10
	DEC	42	32	3	7	17%	73	1	8	23
2015	TOTAL	592	547	23	22	4%		78	157	312
2016	JAN	34	15	0	19	56%	52	2	4	9
	FEB	31	8	0	23	74%	48	1	2	5
	MAR	34	0	0	34	100%	0	0	0	0
2016	TOTAL	99	23	0	76	77%		3	6	14

Form 2 Application For Permit to Drill (APDs)

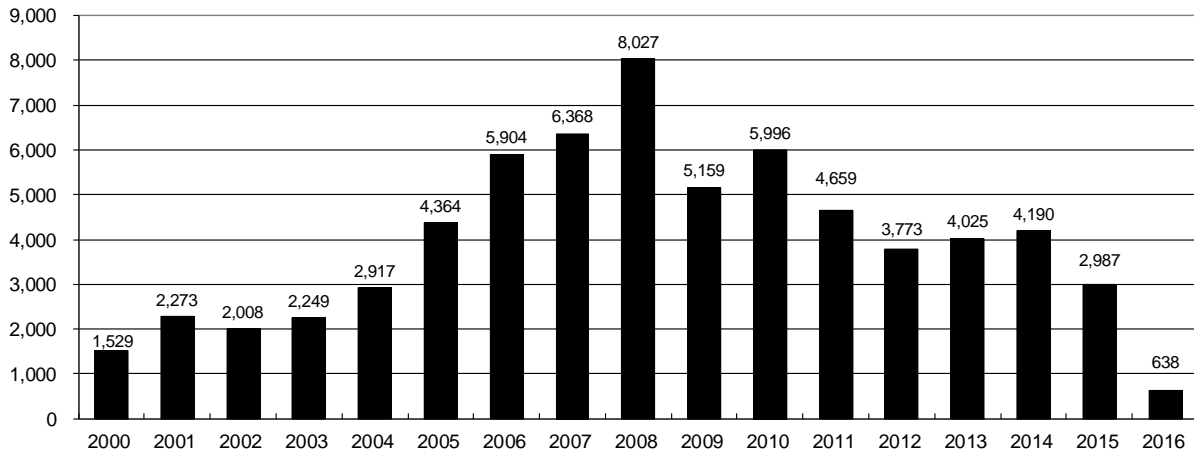
Year	Month	Received	Approved	Withdrawn	In Process	Percent In Process	Median Days	Less Than 30 Days	30 to 49 Days	Greater Than 50 Days
							to Process			
2011	TOTAL	4,691	4,557	132	0	0%		2,723	1,565	587
2012	TOTAL	3,955	3,816	139	0	0%		1,971	1,393	602
2013	TOTAL	4,548	4,312	235	1	0%		1,046	1,626	1,714
2014	TOTAL	4,208	4,014	146	48	1%		689	1,629	1,732
2015	JAN	291	281	1	9	3%	55	50	60	174
	FEB	294	277	17	0	0%	72	24	73	183
	MAR	306	249	35	22	7%	84	10	73	168
	APR	169	154	15	0	0%	78	28	35	94
	MAY	270	265	5	0	0%	77	9	84	172
	JUN	321	310	11	0	0%	67	45	81	186
	JUL	299	290	3	6	2%	67	15	84	197
	AUG	319	303	9	7	2%	87	11	64	230
	SEP	203	195	2	6	3%	73	17	37	145
	OCT	346	297	9	40	12%	80	16	75	206
	NOV	181	133	13	35	19%	53	15	46	77
	DEC	268	217	9	37	14%	54	9	47	161
2015	TOTAL	3,267	2,971	129	162	5%		249	759	1,993
2016	JAN	232	140	0	92	40%	55	23	33	84
	FEB	181	56	0	125	69%	45	5	35	16
	MAR	249	6	0	243	98%	2	6	0	0
2016	TOTAL	662	202	0	460	69%	102	34	68	100



Annual Drilling Permits by County as of April 1, 2016

County	2000	2001	2002	2003	2004	2005	2006	2007	2008	2009	2010	2011	2012	2013	2014	2015	2016
ADAMS	38	28	9	26	39	34	37	89	51	35	21	8	40	40	51	96	20
ARAPAHOE		2	1	2	5	7	11	10	10	10	8	23	35	23	34	19	
ARCHULETA	7	9	6	10	8	13	14	26	47	11	18	12	5	4	3	11	2
BACA	22	6	2	3	7	8	2	11	13	3	4	5	3	1	1		
BENT	2				5	3	8	1	1		5		2	1			
BOULDER	1	5	6	7	17	13	21	37	32	35	24	30	22				
BROOMFIELD			2	7		1	1		2	33	28	11	36		31		
CHEYENNE	3	3	3	3	3	10	21	15	33	12	13	16	31	50	26	9	
COSTILLA																	
CROWLEY																2	
DELTA			7	4	5	10	9	2			4	3	6	1	2		
DENVER		3					19	25	24								
DOLORES				1	1	1	6	10	12	21	8	8	13	12	3		
EAGLE														1			
ELBERT	2						4			1		1	2	2	4	3	
EL PASO										2	3	3	18	1	2		
FREMONT					1	3	2	4	14	13	22	14	11	2	8	2	
GARFIELD	213	353	362	567	796	1,509	1,845	2,550	2,888	1,981	2,037	1,323	1,046	870	1,066	532	116
GRAND																	
GUNNISON			5	10	1	9	19	7	10	12	4	3	11	9	20	28	
HUERFANO	41	27	27		8	2			7		2	1	9	1	13	2	
JACKSON	34	18	21	9	14	6	8	5	27	19	9	18	5	12	17	3	18
JEFFERSON	1						1	3	2					1			
KIOWA	11	18	2	4	2	1	11	9	26	7	16	17	17	12	5	3	
KIT CARSON				1	3	5	4	4	13	7	3	2	6	1	2		
LA PLATA	127	156	104	162	102	115	235	251	328	298	191	99	71	32	87	106	36
LARIMER	2		1			1		5	46	12	41	8	13	2	4	28	
LAS ANIMAS	268	400	259	180	332	413	500	362	303	88	92	85	11	2	1		
LINCOLN	2	2	1	6	3	4	1	2	58	44	48	31	36	87	129	24	1
LOGAN	4	7	3	3	6	13	17	14	5	9	17	8	27	4	5		1
MESA	13	27	30	27	54	136	265	293	501	427	306	127	150	105	74	126	
MOFFAT	35	52	62	63	63	60	120	68	57	51	53	93	88	44	54	12	1
MONTEZUMA	4		5	8	8	11	5	12	22	39	19	27	29	14	25	3	
MONTROSE	1	3	2	4	2		1	3	3		1	1					
MORGAN	9	9	2	7	9	7	3	6	2	1	6	13	5	16	6	4	14
OTERO																	
PARK										3	4	1					
PHILLIPS	1	2		7	13	17	12	69	82	45	64	112	56		11	2	
PITKIN					1			1								1	
PROWERS	2	5	4		7	5	7	5	8	1	3	1			1		1
RIO BLANCO	89	187	105	179	154	161	360	321	477	348	441	109	117	167	121	107	2
RIO GRANDE	1	1		1					1	1			2		1		
ROUTT	20	13	1		4	6	9	8	4	2	3	10	4	12	4	9	
SAGUACHE	2		2					2	1	2							
SAN MIGUEL	11	13	27	18	42	45	35	23	20	13	10	2	1		2	3	
SEDGWICK				1	5	2	7	2	1	19	11	12	2		7	1	
WASHINGTON	23	17	27	34	128	50	69	45	11	1	6	12	6	19	12	9	
WELD	509	702	760	757	832	901	1,418	1,527	2,340	1,448	2,152	2,262	1,826	2,468	2,303	1,841	426
YUMA	31	205	160	138	237	782	797	541	545	105	299	148	11	9	53	3	
TOTAL	1,529	2,273	2,008	2,249	2,917	4,364	5,904	6,368	8,027	5,159	5,996	4,659	3,773	4,025	4,190	2,987	638

ALL COUNTIES





Form 2A Breakdown By County By Year as of April 1, 2016

Year	County	Form 2As	Completed	In Process	New Location	CDP	SWH	RSO	CDPHE
2009	Total State	818	818	0	408	2	80	5	5
2010	Total State	2,377	2,377	0	1,543	0	317	22	55
2011	Total State	2,297	2,297	0	1,724	1	259	16	5
2012	Total State	1,297	1,297	0	900	0	167	6	1
2013	Total State	1,195	1,194	1	845	0	144	2	4
2014	Total State	1,068	1,063	5	777	3	129	7	3
2015	ADAMS	8	6	2	6	0	0	0	1
	ARAPAHOE	11	10	1	6	0	0	0	0
	ARCHULETA	5	5	0	2	0	4	0	1
	CHEYENNE	8	7	0	7	0	0	0	0
	ELBERT	3	3	0	3	0	0	0	0
	FREMONT	1	1	0	1	0	1	0	0
	GARFIELD	29	27	2	9	0	17	0	0
	GUNNISON	10	10	0	1	0	8	0	0
	HUERFANO	1	1	0	0	0	0	0	0
	JACKSON	7	7	0	4	0	7	1	0
	KIOWA	3	3	0	3	0	3	0	0
	LA PLATA	18	17	1	8	0	16	0	0
	LARIMER	3	3	0	1	0	0	0	0
	LINCOLN	26	26	0	25	0	0	0	0
	LOGAN	1	1	0	0	0	0	0	0
	MESA	12	11	1	8	0	6	0	0
	MOFFAT	9	9	0	5	0	9	0	0
	MONTEZUMA	3	3	0	3	0	0	0	0
	MORGAN	4	2	2	3	0	0	0	0
	PHILLIPS	2	2	0	2	0	0	0	0
	RIO BLANCO	13	13	0	8	0	13	0	0
	ROUTT	3	3	0	1	0	3	0	0
	SAN MIGUEL	2	2	0	2	0	2	0	0
	SEDGWICK	1	1	0	1	0	0	0	0
	WASHINGTON	14	14	1	12	0	0	0	0
	WELD	374	354	18	280	0	3	0	0
	YUMA	3	3	0	1	0	0	0	0
2015	Total State	574	544	28	402	0	92	1	2
2016	ADAMS	2	0	2	1	0	0	0	0
	ARAPAHOE	1	0	1	1	0	0	0	0
	DOLORES	1	0	1	1	0	0	0	0
	GARFIELD	11	3	8	1	0	6	0	2
	GUNNISON	2	0	2	1	0	1	0	0
	LINCOLN	1	1	0	1	0	0	0	0
	LOGAN	1	0	1	0	0	0	0	0
	MOFFAT	2	0	2	1	0	2	0	0
	PHILLIPS	2	0	2	2	0	0	0	0
	PROWERS	1	1	0	1	0	0	0	0
	WASHINGTON	1	0	1	1	0	0	0	0
	WELD	67	17	50	37	0	1	0	0
2016	Total State	92	22	70	48	0	10	0	2

Abbreviations:

CDP = Comprehensive Drilling Plan

SWH = Sensitive Wildlife Habitat consultation

RSO = Restricted Surface Occupancy consultation

CDPHE= Colorado Department of Health and Environment consultation



Well to Building Setbacks by Year and by County as of April 1, 2016

Count of well locations, grouped by proximity from well to buildings.

Location Proximity to Buildings	2009	2010	2011	2012	2013	2014	2015	2016	Number of Locations	Percent of Total Locations
Less than 150 feet	2	3	3	2	0	3	2	0	15	0%
150 to 350 feet	37	58	61	39	34	38	12	3	282	3%
350 to 500 feet	50	110	97	61	64	48	33	8	471	6%
500 to 1000 feet	117	385	331	188	188	161	83	16	1,469	17%
1000 + feet	356	1,705	1,470	838	762	724	378	57	6,290	74%
TOTAL LOCATIONS	562	2,261	1,962	1,128	1,048	974	508	84	8,527	

County	TOTAL	Less than 150 feet	150 to 350 feet	350 to 500 feet	500 to 1000 feet	1000 + feet
ADAMS	78	0	4	9	18	47
ARAPAHOE	96	0	2	4	10	80
ARCHULETA	23	0	0	1	11	11
BACA	15	0	0	0	1	14
BENT	7	0	0	0	0	7
BOULDER	23	0	1	1	17	4
BROOMFIELD	33	0	0	4	13	16
CHEYENNE	140	1	0	0	2	137
CROWLEY	2	0	0	0	0	2
DELTA	7	0	0	2	1	4
DOLORES	19	0	0	0	7	12
EAGLE	1	0	0	0	0	1
EL PASO	14	0	0	0	3	11
ELBERT	11	0	0	0	2	9
FREMONT	40	0	2	7	8	23
GARFIELD	559	0	10	9	77	463
GUNNISON	43	1	0	4	1	37
HUERFANO	16	0	0	0	5	11
JACKSON	50	0	0	4	1	45
KIOWA	66	0	0	0	1	65
KIT CARSON	14	0	0	0	0	14
LA PLATA	134	0	5	14	46	69
LARIMER	39	0	5	4	14	16
LAS ANIMAS	201	1	6	7	37	150
LINCOLN	371	0	1	2	4	364
LOGAN	44	0	1	1	1	41
MESA	97	0	0	3	14	80
MOFFAT	178	0	0	2	15	161
MONTEZUMA	42	0	0	1	4	37
MONTROSE	2	0	0	0	0	2
MORGAN	30	0	0	2	4	24
PARK	4	0	0	0	0	4
PHILLIPS	275	1	4	6	21	243
PITKIN	1	0	0	0	0	1
PROWERS	6	0	0	0	0	6
RIO BLANCO	187	0	0	0	2	185
RIO GRANDE	2	0	0	0	1	1
ROUTT	29	0	0	0	2	27
SAN MIGUEL	14	0	0	0	0	14
SEDGWICK	33	0	0	1	3	29
WASHINGTON	73	0	2	0	3	68
WELD	4,980	11	230	367	1,076	3,296
YUMA	528	0	9	16	44	459



Well to Building Setbacks Less Than Two Hundred Feet as of April 1, 2016

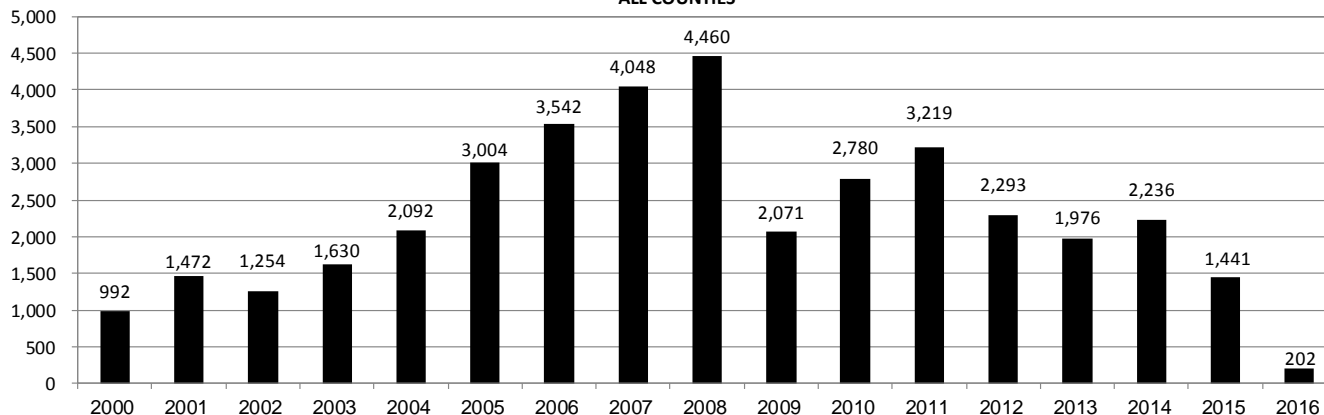
Year	Location Doc Number	County	High Density	New Location	Distance (Feet)	Proximity (Feet)	Building Description
2015	400768804	WELD	No	Yes	46	less 150	Building to be razed
2011	2587822	CHEYENNE	No	No	58	less 150	Water well house
2009	1691798	WELD	No	No	58	less 150	Vehicle garage
2010	400072164	WELD	No	Yes	69	less 150	Abandoned hog shed
2014	400569085	WELD	No	No	78	less 150	Well shed
2014	400600705	WELD	No	No	80	less 150	Livestock shed
2012	400240957	GUNNISON	No	Yes	90	less 150	Equipment shed
2015	400742811	WELD	No	Yes	102	less 150	Building to be razed
2009	1758843	WELD	No	Yes	103	less 150	Building to be razed
2011	1636646	WELD	No	No	122	less 150	Storage shed
2009	400011284	LAS ANIMAS	No	Yes	127	less 150	Operator is owner
2009	1786896	PHILLIPS	No	No	132	less 150	Grain storage
2014	400642113	WELD	No	Yes	142	less 150	Barn
2011	400117702	WELD	No	Yes	143	less 150	Irrigation pump house
2011	400227765	WELD	No	Yes	145	less 150	Storage barn
2014	400558626	LINCOLN	No	No	150	less 150	Gas plant equipment building
2009	1904205	WELD	No	No	154	150 to 350	Livestock enclosure
2012	400243295	WELD	No	Yes	155	150 to 350	Unused storage shed
2015	400862577	GARFIELD	No	No	155	150 to 350	Gravel Pit Scale House
2011	400179419	WELD	No	Yes	157	150 to 350	Existing well / storage building
2010	400054716	WELD	No	No	159	150 to 350	Equipment barn
2011	400188968	WELD	No	Yes	159	150 to 350	Abandoned
2014	400554054	WELD	No	Yes	159	150 to 350	Equipment shed
2014	400559404	WELD	No	Yes	160	151 to 350	Barn
2010	400021477	WELD	No	Yes	162	150 to 350	Goat barn
2009	1758386	WELD	No	Yes	168	150 to 350	Storage shed
2011	1635946	WELD	No	No	169	150 to 350	Storage shed
2013	400447386	WELD	No	No	169	150 to 350	Abandoned turkey barn
2013	400447391	WELD	No	No	169	150 to 350	Abandoned turkey barn
2011	400165164	WELD	No	Yes	178	150 to 350	Residence
2013	400367184	WELD	No	Yes	179	150 to 350	Shed
2011	400188780	WELD	No	Yes	180	150 to 350	Residence
2014	400562498	WELD	No	Yes	181	150 to 350	Garage / storage shed
2010	1697620	WELD	No	No	187	150 to 350	Livestock shed
2009	1758746	WELD	No	No	193	150 to 350	Storage shed
2011	400154431	WELD	No	Yes	198	150 to 350	Turkey barn
2012	400250031	WELD	No	Yes	198	150 to 350	Abandoned guard shack
2010	1774783	WELD	No	No	199	150 to 350	Cement service building
2011	400118102	YUMA	No	Yes	199	150 to 350	Steel barn



Annual Well Starts by County as of April 1, 2016

County	2000	2001	2002	2003	2004	2005	2006	2007	2008	2009	2010	2011	2012	2013	2014	2015	2016
ADAMS	18	13	4	19	22	24	13	41	14	14	21	1	15	6	29	4	1
ARAPAHOE					6	1	5	2	1	1	3	9	9	25	21		
ARCHULETA	4	4	2	5	4	10	5	7	29	9	12	10	11		1	7	
BACA	19	6	2	1	6	6	2	6	12		5	4	2	1		1	
BENT	2				3	2	8	1	1			1	2				
BOULDER				2	5	11	9	14	25	16	13	7	14				
BROOMFIELD			2		1				10		21	11	5				
CHEYENNE	2	1	3	3		9	14	15	14	8	12	11	17	35	19	3	
COSTILLA																	
CROWLEY															2		
DELTA				5	4	6	5	2			9	2	3				
DENVER		2					7	5	4								
DOLORES					2		2	13	6	2		1	5	10	4		
EAGLE														1			
EL PASO											2		5		1		
ELBERT	2						1									3	
FREMONT					1	3	2	2	5	3	10	16	9	1	4	1	
GARFIELD	190	251	245	417	585	799	1,005	1,304	1,689	765	905	877	495	391	362	172	39
GUNNISON			1		1	1	9	5	1	4	5	2	4	1	2	2	
HUERFANO	25	14	19	3	6	2			2		2		2	1	4	1	
JACKSON	24	2	4	10	10		3	3	12	1	8	7		7	7		5
JEFFERSON								2									
KIOWA	8	16	2	4	2	1	7	7	2	5	15	14	10	12	3	2	
KIT CARSON				1	1	6	2	1	14	3	1	1	3	1	2		
LA PLATA	99	135	118	110	103	104	108	179	199	131	67	54	3	10	36	33	10
LARIMER	1	1				1		4	8	1	28	2	10	4	1	9	
LAS ANIMAS	202	286	205	221	296	384	413	326	222	14	7	78	1		1		
LINCOLN	2	2	1	5	2	2	1	2	18	11	14	21	23	42	43	12	
LOGAN	4	6	3	3	2	11	12	12	3	7	3	9	13	4	6		
MESA	2	12	12	13	25	89	156	209	225	14	11	41	4	11	16	76	
MOFFAT	18	23	25	28	19	40	60	42	26	18	15	33	25	27	3	6	
MONTEZUMA	2	3	5	5	1	7	2	4	22	10	3	8	18	12	8	1	
MONTROSE		3		2	1			1	2		1						
MORGAN	9	8	1	7	5	5	3	1	1	2	3	2	3	1	4	1	
PARK												2					
PHILLIPS	1			6	10	11	4	35	18	2	42	130	48		9		
PROWERS	2	4	4		5	5	6	3	5	2	3	1				1	
RIO BLANCO	51	82	47	83	92	95	107	95	205	118	107	72	53	37	42	17	
RIO GRANDE														1			
ROUTT	5	12	1		1	6	3	2		2	1	2	4	2	2		
SAN MIGUEL	6	9	10	19	28	13	20	17	5	1	2	2			2		
SEDGWICK				1	2	1	1	5			3	8	3				
WASHINGTON	15	12	24	29	65	34	23	14	11	2	2	4	1	9	7	2	1
WELD	237	403	406	522	632	718	931	1,222	1,313	878	1,209	1,672	1,457	1,311	1,556	1,087	146
YUMA	42	162	108	106	144	597	593	445	336	27	213	106	16	13	39		
TOTAL	992	1,472	1,254	1,630	2,092	3,004	3,542	4,048	4,460	2,071	2,780	3,219	2,293	1,976	2,236	1,441	202

ALL COUNTIES





Active Wells by County and Status as of April 1, 2016

COUNTY	Drilling	Domestic	Injecting	Producing	Shut In	Temp Aband	Waiting on Completion	Active Storage	Total Active Wells
ADAMS	12		7	881	45	7	2	12	966
ARAPAHOE		1	2	145	7	9		43	207
ARCHULETA		5	1	105	15	13	6	1	146
BACA			16	113	15	4		55	203
BENT		1		30	6				37
BOULDER				308	2	1			311
BROOMFIELD				96					96
CHEYENNE			43	320	15	44	1		423
CROWLEY									0
DELTA				4	12		1		17
DENVER			1	46	2		3		52
DOLORES	1		1	36	3	2			43
EL PASO	1	1				1			3
ELBERT	3			67	2	1			73
FREMONT	4	3		59	8	6	1		81
GARFIELD	198	4	44	10,620	75	99	26	1	11,067
GUNNISON	3		1	33	8		3		48
HUERFANO	1		1	39	2	5	1		49
JACKSON	6		31	110	36				183
JEFFERSON			2	1	1		1	1	6
KIOWA	1		10	104	11	2	2		130
KIT CARSON		1	2	11		2			16
LA PLATA	10	7	28	3,143	91	14	3	29	3,325
LARIMER	1	2	18	199	24	16	1		261
LAS ANIMAS		3	14	2,798	15	103	13	16	2,962
LINCOLN	6	1	8	97	11	7	2		132
LOGAN	9		15	113	40	29	3	10	219
MESA	19	1	7	898	83	14	45	11	1,078
MOFFAT	3		9	485	49	35	4		585
MONTEZUMA		2	6	121	33	14			176
MONTROSE			1			1			2
MORGAN			22	91	81	34		80	308
OURAY		1				1			2
PARK									0
PHILLIPS			2	266	2	1	1		272
PITKIN								10	10
PROWERS				26	4		1		31
RIO BLANCO	24	3	295	2,301	173	91	12	2	2,901
ROUTT		2		32	8	3			45
SAN MIGUEL	1			110	14	5			130
SEDGWICK	2		1	14	3		2		22
WASHINGTON	4		23	399	27	7	3		463
WELD	908	1	51	21,439	246	38	38	3	22,724
YUMA	2	8	21	3,790	36	9	11	1	3,878
Totals	1,219	47	683	49,450	1,205	618	186	275	53,683



Monthly Statistics as of April 1, 2016

Page 1 of 2

YEAR and MONTH	Baker - Hughes Rig Count	Permits										Well Spud Notices	Active		Public Visits		
		Drilling		Recompletion		Injection		Pits		Locations			Drilling Permits	Active Wells	Data	Office	Internet
		Rcvd	Apvd	Rcvd	Apvd	Rcvd	Apvd	Rcvd	Apvd	Rcvd	Authz						
2011 TOTAL		4,709	4,659	325	320	44	32	190	192	2,382	2,267	3,220			187	1,294	1,337,865
2012 JAN	73	372	258	26	21	3	0	11	5	142	129	243	5,217	46,958	12	106	112,686
FEB	70	370	382	23	27	7	5	21	9	160	129	230	5,173	47,128	16	114	105,857
MAR	66	292	347	21	14	2	2	17	24	133	172	292	5,132	47,263	26	138	111,746
APR	66	410	235	16	24	5	5	9	2	137	106	241	4,785	47,377	12	108	107,627
MAY	66	491	506	23	16	3	1	6	2	105	131	211	4,885	47,533	20	123	109,802
JUN	69	326	377	11	19	8	6	5	8	110	89	145	5,136	47,860	11	111	108,849
JUL	66	237	276	9	14	3	2	5	2	97	103	183	5,152	48,173	13	102	114,195
AUG	62	313	288	6	9	6	4	23	5	83	97	178	5,031	49,153	11	112	110,908
SEP	61	252	256	1	5	5	2	4	1	81	77	161	4,960	49,230	11	89	106,114
OCT	62	326	265	9	3	7	6	2	19	94	82	162	5,009	49,236	8	105	108,833
NOV	56	271	323	5	8	6	6	2	4	109	97	142	5,000	49,989	10	119	120,586
DEC	57	322	260	4	8	8	5	9	3	122	81	105	5,081	50,067	9	78	107,240
2012 TOTAL		3,982	3,773	154	168	63	44	114	84	1,373	1,293	2,293			159	1,305	1,324,443
2013 JAN	53	538	331	6	0	3	5	6	8	176	124	142	5,060	50,265	9	108	47,406
FEB	56	260	455	10	5	2	3	4	11	91	141	138	5,250	50,372	7	102	40,649
MAR	57	344	241	5	9	3	8	15	6	129	84	172	5,093	50,540	9	133	43,019
APR	61	331	333	6	5	5	5	6	8	146	117	165	4,925	50,687	3	132	46,459
MAY	61	350	342	8	6	6	6	10	7	106	142	162	5,110	50,810	3	123	45,215
JUN	62	349	273	2	8	8	8	5	3	114	85	143	5,273	50,909	8	122	41,015
JUL	68	864	304	11	4	9	2	9	5	218	91	160	5,070	51,091	7	154	45,558
AUG	69	232	291	6	4	3	2	4	1	35	76	206	5,200	51,255	20	130	44,722
SEP	69	212	362	9	5	10	9	3	19	56	109	166	5,185	51,407	5	105	41,256
OCT	72	319	376	5	9	7	5	1	8	67	88	237	4,967	51,598	5	135	45,151
NOV	69	346	353	4	13	7	4	2	27	67	85	162	5,141	51,711	12	119	38,903
DEC	64	336	367	2	4	4	6	2	3	63	71	123	5,129	51,737	4	93	32,381
2013 TOTAL		4,481	4,028	74	72	67	63	67	106	1,268	1,213	1,976			92	1,456	511,734
2014 JAN	62	278	232	3	2	3	4	14	8	90	43	174	4,926	51,840	1	90	46,150
FEB	61	284	297	6	4	1	1	3	1	91	94	149	5,051	51,847	12	113	43,408
MAR	62	367	329	4	6	7	1	6	6	110	88	183	4,997	51,952	16	140	46,620
APR	63	276	317	2	3	2	5	8	3	89	99	171	4,897	52,060	11	188	45,558
MAY	65	458	383	2	2	3	1	6	7	83	94	179	4,923	52,202	18	131	42,365
JUN	67	429	377	3	0	6	7	5	2	134	92	224	4,924	52,337	10	156	42,518
JUL	69	272	446	2	5	3	11	8	5	97	126	180	4,955	52,431	7	166	45,481
AUG	73	376	259	4	3	4	4	3	4	111	87	220	5,060	52,582	8	145	42,431
SEP	76	412	304	2	3	3	1	20	1	116	81	205	5,006	52,694	14	175	43,577
OCT	76	459	371	3	2	9	2	4	6	93	109	189	4,827	52,785	19	138	46,030
NOV	73	326	479	5	2	5	4	4	0	54	103	175	5,171	52,947	8	96	39,583
DEC	69	286	397	1	2	2	7	1	2	45	99	187	5,236	53,054	6	144	37,964
2014 TOTAL		4,223	4,191	37	34	48	48	82	45	1,113	1,115	2,236			130	1,682	521,685
2015 JAN	64	349	316	3	1	2	9	3	1	60	43	192	5,060	53,195	17	114	41,502
FEB	49	324	161	3	2	5	6	9	0	73	28	115	4,750	53,309	4	117	38,245
MAR	38	246	294	1	6	1	5	7	5	44	70	159	4,983	53,414	6	146	42,513
APR	37	194	165	3	1	2	5	1	2	46	37	90	4,854	53,456	1	125	39,559
MAY	39	324	190	1	4	2	6	8	0	41	44	110	4,632	53,535	5	113	unavailable
JUN	38	327	281	4	1	0	5	2	1	52	49	134	4,726	53,608	5	138	unavailable
JUL	38	373	250	4	2	2	1	0	0	57	48	119	4,663	53,706	7	145	26,975
AUG	37	289	300	2	6	3	0	5	5	32	46	121	4,847	53,766	2	109	30,674
SEP	33	242	312	3	1	1	7	0	3	59	49	100	4,953	53,806	4	146	31,642
OCT	30	372	223	2	2	3	1	1	0	54	51	108	4,694	53,898	12	119	33,199
NOV	31	190	254	6	2	4	3	1	0	21	49	115	4,765	53,719	7	105	29,112
DEC	25	275	242	1	5	3	6	1	0	42	43	76	4,594	53,652	3	112	25,659
2015 TOTAL		3,505	2,988	33	33	28	54	38	17	581	557	1,439			73	1,489	339,080
2016 JAN	22	250	126	1	0	3	5	0	0	34	9	70	4,528	53,698	2	118	30,105
FEB	20	205	227	3	0	3	2	44	2	31	39	55	4,599	53,723	8	115	28,611
MAR	21	268	268	0	0	2	2	5	0	34	36	69	4,530	53,710	3	132	30,902
2016 TOTAL		723	621	4	0	8	9	49	2	99	84	194			13	365	89,618

Abbreviation Key: Rcvd = Received, Apvd = Approved, Authz = Authorized



Oil and Gas Staff Report

April 18, 2016

23

Monthly Statistics as of April 1, 2016

Page 2 of 2

YEAR and MONTH	Well			Bonds						Hearings					Enforcement				Remediation Projects		Inspections	
	Oper Change	Operators New	Operators Inactive	Release Ind	Release Blnt	Replace	Claim Ind	Claim Blnt	Hearings Apps.	Hearings Orders	Enforcement NOAVs	Enforcement AOCs	Enforcement OFVs	Cmplt	Spills	Rcvd	Comp	Wells	Locations			
2011 TOTAL	6,743	33	31	79	44	43	4	4	403	349	230	10	19	247	527	726	536	12,394	-			
2012 JAN	1,052	3	3	7	5	1	1	0	70	72	18	1	-	27	35	68	23	998	970			
FEB	385	6	9	8	5	0	0	0	-	-	10	-	-	24	40	85	36	2,000	1,024			
MAR	379	4	1	7	3	9	0	0	44	38	19	-	-	23	38	63	61	2,202	1,146			
APR	478	4	2	10	3	2	0	0	80	59	11	-	-	19	35	26	99	1,700	929			
MAY	526	3	1	4	0	3	0	0	43	50	14	2	-	23	32	27	122	2,630	1,701			
JUN	1,270	3	4	3	3	4	0	0	-	-	5	-	-	35	39	46	98	1,435	1,091			
JUL	499	5	0	1	4	5	0	0	63	50	15	-	-	16	24	45	33	1,323	1,076			
AUG	301	6	5	2	8	0	1	0	67	54	24	3	2	21	28	127	33	1,904	1,432			
SEP	834	0	4	4	5	2	1	0	-	-	5	-	-	14	13	30	36	1,120	845			
OCT	485	1	2	9	1	0	0	0	30	36	6	1	-	13	44	116	37	1,397	1,017			
NOV	523	6	4	12	8	7	0	0	85	37	16	2	-	10	44	26	44	1,331	829			
DEC	958	6	2	3	1	0	0	0	-	-	14	-	-	19	30	31	19	1,031	610			
2012 TOTAL	7,690	47	37	70	46	33	3	0	482	396	157	9	2	244	402	690	641	19,071	12,670			
2013 JAN	653	3	5	12	2	0	0	0	48	75	15	4	-	21	40	31	45	1,622	789			
FEB	289	4	2	6	3	2	0	0	41	35	11	2	-	15	30	42	90	1,044	615			
MAR	354	1	3	2	2	1	0	0	54	67	16	2	-	11	25	65	29	1,968	1,149			
APR	333	7	1	5	2	8	0	0	-	-	21	-	-	16	33	39	37	1,510	910			
MAY	346	2	1	3	0	0	0	0	46	50	22	6	-	13	31	41	60	2,621	1,576			
JUN	1,456	6	2	2	4	5	0	0	91	44	13	2	-	25	40	47	37	1,860	1,102			
JUL	1,009	4	1	2	2	0	0	0	96	70	25	3	-	21	47	50	22	2,298	1,338			
AUG	389	6	4	5	4	2	0	0	-	-	23	-	-	25	57	36	41	2,146	1,033			
SEP	277	4	1	6	1	0	0	0	101	51	7	2	-	16	60	43	51	1,536	703			
OCT	345	6	0	2	2	2	0	0	52	82	4	12	3	12	79	47	60	1,868	1,158			
NOV	442	2	0	2	2	0	0	0	-	-	30	-	-	12	51	31	34	2,401	1,613			
DEC	1,299	4	1	1	2	0	0	0	42	48	50	4	-	14	75	35	35	2,677	1,384			
2013 TOTAL	7,192	49	21	48	26	20	0	0	571	522	237	37	3	201	568	507	541	23,551	13,370			
2014 JAN	1,971	6	3	3	2	0	0	0	57	46	25	2	-	8	68	46	28	3,243	1,597			
FEB	2,038	8	2	6	5	0	0	0	-	-	23	-	-	17	59	51	13	2,330	1,282			
MAR	492	2	3	1	5	0	0	0	97	75	29	10	-	22	63	66	31	1,822	1,298			
APR	313	5	2	6	4	1	0	0	74	64	17	8	1	20	57	47	59	2,651	1,715			
MAY	509	5	1	3	3	5	0	0	-	-	12	-	-	13	63	50	42	2,437	1,571			
JUN	1,008	5	2	7	4	1	0	1	95	90	14	6	1	16	74	44	50	3,209	1,717			
JUL	338	2	1	5	3	1	0	0	96	96	11	6	-	12	60	60	59	3,071	1,536			
AUG	452	6	1	2	4	0	0	0	-	-	8	-	-	31	56	32	58	2,788	1,682			
SEP	378	4	1	1	2	0	0	0	73	63	13	7	1	18	65	39	50	2,587	1,616			
OCT	886	8	1	0	2	0	1	0	80	75	12	3	1	13	74	78	36	3,886	1,914			
NOV	487	2	4	8	4	5	0	0	-	-	6	-	-	15	72	27	59	3,156	1,458			
DEC	1,402	1	1	0	2	0	0	0	126	89	9	1	-	58	75	56	17	3,028	1,596			
2014 TOTAL	10,274	54	22	42	40	13	1	1	698	598	179	43	4	243	786	596	502	34,208	18,982			
2015 JAN	713	2	3	2	3	0	0	0	76	64	15	2	1	36	64	38	58	2,491	1,246			
FEB	555	5	2	2	3	1	0	0	-	-	10	-	-	22	44	34	64	2,667	1,382			
MAR	183	5	2	5	2	4	2	0	72	72	33	1	1	42	76	59	94	3,469	1,738			
APR	271	7	1	0	5	3	0	0	60	54	19	3	-	21	46	40	61	3,451	1,620			
MAY	436	8	0	0	2	3	0	0	89	54	10	10	2	25	46	56	41	2,869	1,422			
JUN	323	2	1	3	5	4	0	0	-	-	27	-	-	25	41	32	43	3,357	1,707			
JUL	380	3	2	0	5	1	0	0	123	140	5	13	1	32	67	52	28	3,445	1,774			
AUG	212	8	2	0	7	4	0	0	-	-	13	-	-	18	56	24	62	3,692	1,847			
SEP	263	6	5	1	7	4	0	2	112	78	25	11	-	30	41	44	40	2,887	1,528			
OCT	311	4	1	6	1	6	1	0	115	103	6	12	1	32	58	51	33	3,420	1,494			
NOV	80	2	3	5	0	0	0	1	-	-	6	-	-	15	38	47	40	3,348	1,666			
DEC	340	7	1	3	5	1	0	0	91	80	4	5	2	60	46	39	37	3,851	1,765			
2015 TOTAL	4,067	59	23	27	45	31	3	3	738	645	173	57	8	358	623	516	601	38,947	19,189			
2016 JAN	155	2	1	0	5	5	0	0	76	66	4	7	1	29	51	44	36	3,183	1,550			
FEB	74	2	1	0	1	1	1	0	0	0	8	0	0	27	41	32	49	3,660	1,733			
MAR	0	6	3	2	2	2	1	1	62	57	3	7	1	19	37	48	44	2,977	1,603			
2016 TOTAL	229	10	5	2	8	8	2	1	138	123	15	14	2	75	129	124	129	9,820	4,886			

Abbreviation Ind = Individual, Blnt = Blanket, Apps = Application for Hearing, NOAV = Notice of Alleged Violation, AOC = Administrative Order of Consent, OFV = Order Finding Violation, Cmplt = Complaint, Comp = Completed