

COGCC GIS Online Internet Explorer 8, 9 or 10 – Compatibility Mode Feature

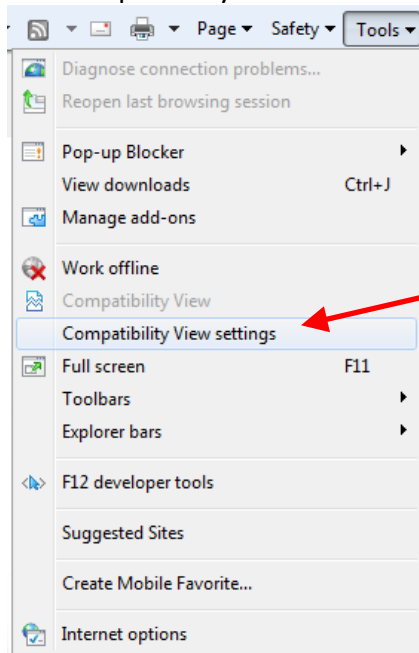
If your browser is Internet Explorer (IE) 8, 9 or 10, it will need to be in Compatibility View in order for all the map tools to function. And with IE 10 the map frame will not load. The Compatibility View can be selected by one of two methods:

1. On the far right side of the address bar, you will see these icons.



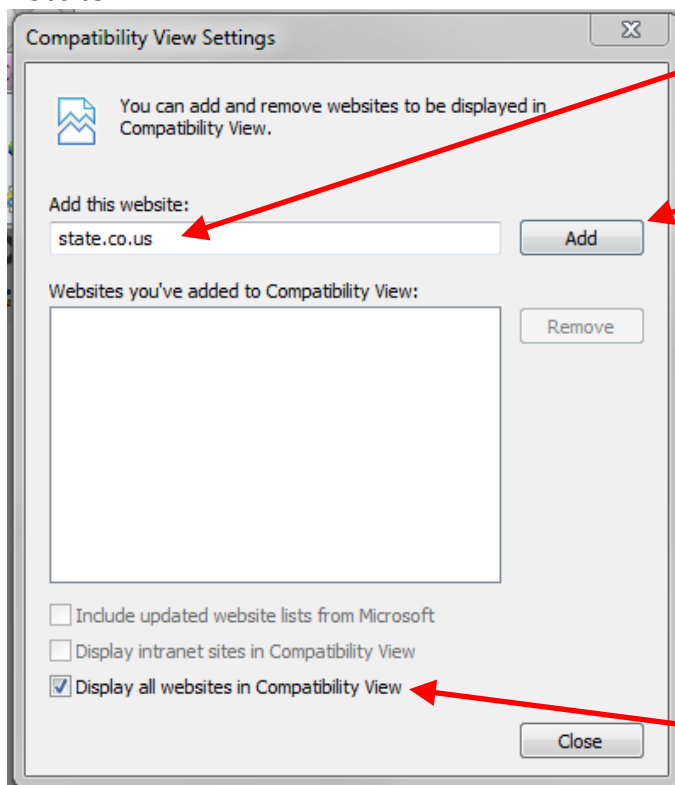
If the Compatibility Mode icon (circled) is grey, you will need to turn it on (left click). The map will re-load and the Compatibility Mode button will change to a blue color. This will need to be done only once. IE9 will remember the setting. However, if you should notice that the Compatibility View icon is grey, you will need to reselect the setting.

2. The Compatibility view can also be activated from the Tools dropdown menu:



Left click the Compatibility View Settings option.

In the Compatibility View Settings window, click the Add button to add the state.co.us website.



Or you can check Display All

Websites in Compatibility View.

Without the Compatibility View feature activated, the map will not allow use of such functions as pan, zoom, select and others.